

The Verizon logo, consisting of the word "verizon" in a bold, lowercase sans-serif font, followed by a checkmark symbol.

MIN LR 28TH AVE SC1

APPROVED
ZONING DEPARTMENT
NMJ 01/03/2018

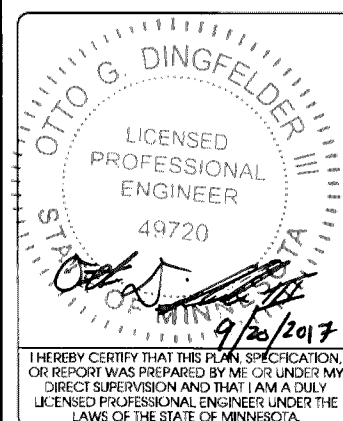
425930

SMALL CELL

INSTALLATION TYPE: REPLACEMENT 30' LIGHT POLE



PROJECT NO:	20161462527
LOCATION CODE:	425930
EDGE PROJECT NO:	14967
CHECKED BY:	OGD

[illegible]

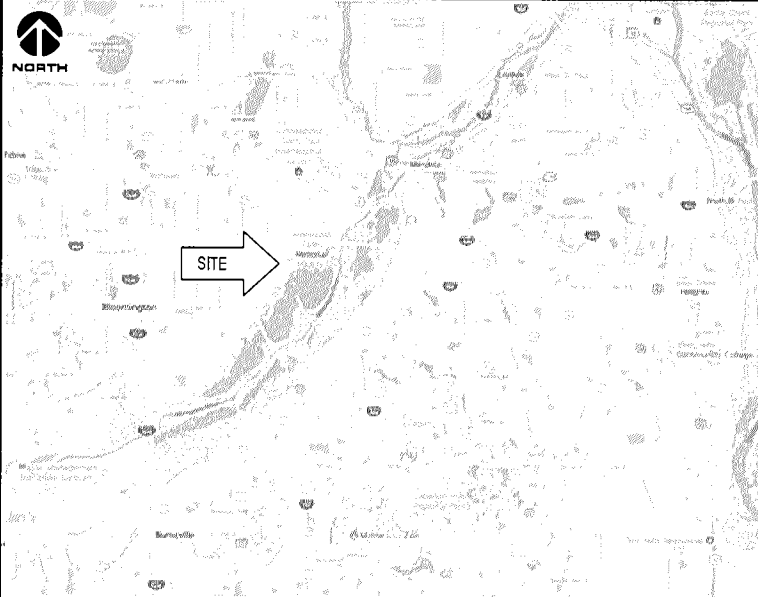
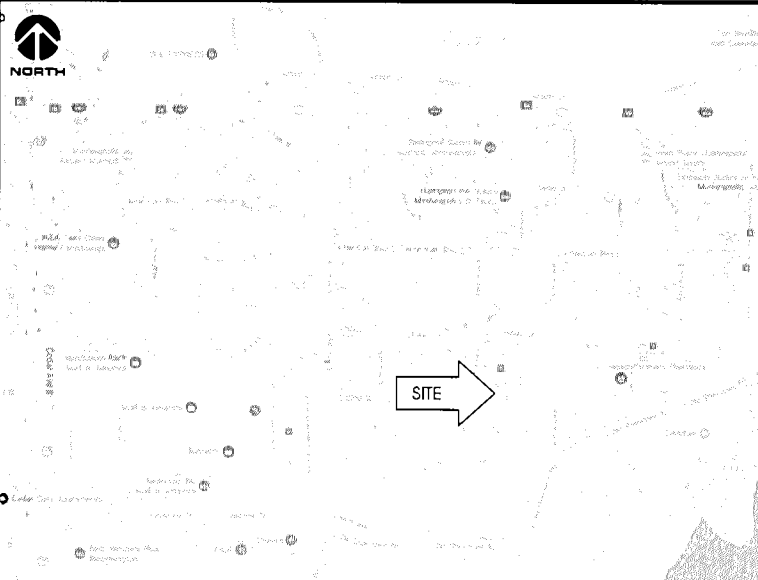

MIN LR 28TH AVE SC1
BLOOMINGTON, MN
REPLACEMENT LIGHT POLE
SMALL CELL DRAWINGS

SHEET TITLE

**TITLE SHEET &
PROJECT DATA**

SHEET NUMBER

G-001

SITE INFORMATION	AREA MAP	PROJECT DESCRIPTION/SOW	SHEET INDEX																																																				
<p>APPROXIMATE ADDRESS: 28TH AVENUE SOUTH AND EAST 82ND STREET BLOOMINGTON, MINNESOTA 55425 HENNEPIN COUNTY</p> <p>SITE COORDINATES: LAT: 44°-51'-18.75"N LONG: 93°-13'-54.27"W GROUND ELEVATION: 813.0' AMSL (PER 1A CERTIFICATE)</p> <p>POLE HEIGHT: 30'-0" T.O.C.</p> <p>MAXIMUM APPURTENANCE HEIGHT: 32'-0" A.G.L.</p>		<ul style="list-style-type: none">• INSTALL (1) REPLACEMENT 30-FT STEEL LIGHT POLE AND ASSOCIATED CONCRETE FOUNDATION• INSTALLATION OF (2) PANEL ANTENNAS• INSTALLATION OF ERICSSON RRU'S AND POWER CONVERTERS• INSTALLATION OF (1) LOAD CENTER• INSTALLATION OF (4) HYBRID COUPLERS• INSTALLATION OF HAND HOLE FOR FIBER AT POLE BASE BY PROVIDER• INSTALLATION OF CONDUIT FOR FIBER BETWEEN HAND HOLE AND POLE BASE BELOW GRADE BY VERIZON• INSTALLATION OF CONDUIT FOR FIBER BETWEEN HAND HOLE AND ROW BELOW GRADE BY PROVIDER• INSTALLATION OF GROUND RODS AROUND POLE FOUNDATION• INSTALLATION OF CONDUIT FOR NEW ELECTRIC SERVICES BY VERIZON• INSTALLATION OF PROPOSED ELECTRICAL METER BY VERIZON• ALL OTHER CONSTRUCTION RELATED ACTIVITIES TO BE COMPLETED BY OTHERS	<table><tr><th>NO:</th><th>SHEET TITLE</th></tr><tr><td>G-001</td><td>TITLE SHEET & PROJECT DATA</td></tr><tr><td>G-002</td><td>GENERAL SPECIFICATIONS</td></tr><tr><td>G-003</td><td>GENERAL SPECIFICATIONS</td></tr><tr><td>G-004</td><td>METRO TRANSIT SITE REQUIREMENTS*</td></tr><tr><td>G-005</td><td>METRO TRANSIT SITE REQUIREMENTS*</td></tr><tr><td>C-101</td><td>SITE PLAN</td></tr><tr><td>C-102</td><td>ENLARGED SITE PLAN</td></tr><tr><td>T-201</td><td>SITE ELEVATION</td></tr><tr><td>T-501</td><td>ANTENNA DETAILS</td></tr><tr><td>T-502</td><td>EQUIPMENT DETAILS</td></tr><tr><td>S-001</td><td>STRUCTURAL NOTES **</td></tr><tr><td>S-601</td><td>STRUCTURAL DETAILS **</td></tr><tr><td>E-101</td><td>UTILITY PLAN</td></tr><tr><td>E-102</td><td>GROUNDING PLAN</td></tr><tr><td>E-601</td><td>UTILITY DETAILS</td></tr><tr><td>E-602</td><td>UTILITY DETAILS</td></tr><tr><td>E-603</td><td>GROUNDING DETAILS</td></tr><tr><td></td><td></td></tr><tr><td></td><td></td></tr><tr><td></td><td></td></tr><tr><td></td><td></td></tr><tr><td></td><td></td></tr><tr><td></td><td></td></tr><tr><td colspan="2">* COMPLETED BY OTHERS</td></tr><tr><td colspan="2">** REVIEWED AND APPROVED BY STRUCTURAL ENGINEER</td></tr></table>	NO:	SHEET TITLE	G-001	TITLE SHEET & PROJECT DATA	G-002	GENERAL SPECIFICATIONS	G-003	GENERAL SPECIFICATIONS	G-004	METRO TRANSIT SITE REQUIREMENTS*	G-005	METRO TRANSIT SITE REQUIREMENTS*	C-101	SITE PLAN	C-102	ENLARGED SITE PLAN	T-201	SITE ELEVATION	T-501	ANTENNA DETAILS	T-502	EQUIPMENT DETAILS	S-001	STRUCTURAL NOTES **	S-601	STRUCTURAL DETAILS **	E-101	UTILITY PLAN	E-102	GROUNDING PLAN	E-601	UTILITY DETAILS	E-602	UTILITY DETAILS	E-603	GROUNDING DETAILS													* COMPLETED BY OTHERS		** REVIEWED AND APPROVED BY STRUCTURAL ENGINEER	
NO:	SHEET TITLE																																																						
G-001	TITLE SHEET & PROJECT DATA																																																						
G-002	GENERAL SPECIFICATIONS																																																						
G-003	GENERAL SPECIFICATIONS																																																						
G-004	METRO TRANSIT SITE REQUIREMENTS*																																																						
G-005	METRO TRANSIT SITE REQUIREMENTS*																																																						
C-101	SITE PLAN																																																						
C-102	ENLARGED SITE PLAN																																																						
T-201	SITE ELEVATION																																																						
T-501	ANTENNA DETAILS																																																						
T-502	EQUIPMENT DETAILS																																																						
S-001	STRUCTURAL NOTES **																																																						
S-601	STRUCTURAL DETAILS **																																																						
E-101	UTILITY PLAN																																																						
E-102	GROUNDING PLAN																																																						
E-601	UTILITY DETAILS																																																						
E-602	UTILITY DETAILS																																																						
E-603	GROUNDING DETAILS																																																						
* COMPLETED BY OTHERS																																																							
** REVIEWED AND APPROVED BY STRUCTURAL ENGINEER																																																							
APPLICABLE CODES	LOCATION MAP	PROJECT DIRECTORY	11"x17" PLOT WILL BE HALF SCALE UNLESS OTHERWISE NOTED CONTRACTOR SHALL VERIFY ALL PLANS AND EXISTING DIMENSIONS/CONDITIONS ON SITE. IMMEDIATELY NOTIFY ENGINEER OF ANY DISCREPANCIES PRIOR TO PERFORMING ANY WORK OR BE RESPONSIBLE FOR THE SAME.																																																				
<p>ALL WORK SHALL COMPLY WITH THE FOLLOWING APPLICABLE CODES:</p> <ul style="list-style-type: none">- 2012 INTERNATIONAL BUILDING CODE- 2014 NATIONAL ELECTRIC CODE- TIA/EIA-222-G OR LATEST EDITION <p>IN THE EVENT OF CONFLICT, THE MOST RESTRICTIVE CODE SHALL PREVAIL</p>		<div>LESSEE: VERIZON WIRELESS 10801 BUSH LAKE RD BLOOMINGTON, MN 55438 CONTACT: COURTNEY BEDNARZ PHONE: 952.946.4694</div> <div>RF ENGINEER: VERIZON WIRELESS 10801 BUSH LAKE RD BLOOMINGTON, MN 55438 CONTACT: JOHN MULLINS PHONE: 612.791.1710</div> <div>SITE ACQUISITION: KE CONSULTING, LLC 3101 GRANDVIEW BLVD MADISON, WI 53713 CONTACT: KIM A. EGAN PHONE: 608.516.0233</div> <div>ENGINEERING COMPANY: EDGE CONSULTING ENGINEERS, INC. 2101 HIGHWAY 13 W BURNSVILLE, MN 55337 CONTACT: OTTO DINGFELDER III, P.E. PHONE: 608.644.1449</div> <div>LESSOR: METRO TRANSIT 560 SIXTH AVENUE NORTH MINNEAPOLIS, MN 55411 PHONE: 612.373.3333</div>																																																					
LOCATION SCAN		ENGINEER OF RECORD																																																					
EDGE CONSULTING ENGINEERS, INC., CONTACT: OTTO DINGFELDER III (PE # 49720 (MN)) PHONE: 608.644.1449																																																							
STRUCTURAL REVIEW																																																							
COMPLETED BY: EDGE CONSULTING ENGINEERS, INC. PROJECT #: 14967 DATE: 09/19/2017			CONTRACTOR TO REVIEW STRUCTURAL REPORT IN ITS ENTIRETY. ANY DISCREPANCIES OR DISAGREEMENTS BETWEEN THE REPORT AND THESE PLANS SHOULD BE RESOLVED PRIOR TO CONSTRUCTION																																																				

CASE FILE #PL201700223

APPROVED
ZONING REVIEW ONLY
NMJ 01/03/2018



PROJECT NO:	20161462527
LOCATION CODE:	425930
EDGE PROJECT NO:	14967
CHECKED BY:	OGD

REV.	DATE	DESCRIPTION	INT.
A	06/22/2017	PRELIM SMALL CELL DWGS	NAT
B	08/01/2017	PRELIM SMALL CELL DWGS	ITB
C	08/17/2017	PRELIM SMALL CELL DWGS	ITB
D	09/19/2017	FINAL DWGS	DGS

- APPROVED -
SEE SHEET G-001 FOR
ENGINEER SEAL

I HEREBY CERTIFY THAT THIS PLAN, SPECIFICATION,
OR REPORT WAS PREPARED BY ME OR UNDER MY
DIRECT SUPERVISION AND THAT I AM A DULY
LICENSED PROFESSIONAL ENGINEER UNDER THE
LAWS OF THE STATE OF MINNESOTA.

MIN LR 28TH AVE SC1
BLOOMINGTON, MN
REPLACEMENT LIGHT POLE
SMALL CELL DRAWINGS

SHEET TITLE
SITE PLAN

SHEET NUMBER
C-101



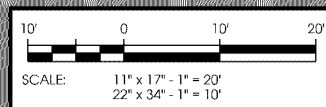
A **AERIAL OVERVIEW**



B **SITE OVERVIEW
[LOOKING NORTHWEST]**



C **EXISTING POWER SOURCE**



L:\4000\14967\CAD\Plot\CD3\C-101.dgn



CASE FILE #PL201700223

APPROVED
ZONING REVIEW ONLY
NMJ 01/03/2018



verizon[✓]



3101 Grandview Blvd
Madison, WI 53713
608.516.0233



2101 Highway 13 W
Burnsville, MN 55337
608.644.1449 voice
608.644.1549 fax
www.edgeconsult.com

PROJECT NO:	20161462527
LOCATION CODE:	425930
EDGE PROJECT NO:	14967
CHECKED BY:	OGD

[illegible]

- APPROVED -
SEE SHEET G-001 FOR
ENGINEER SEAL

I HEREBY CERTIFY THAT THIS PLAN, SPECIFICATION, OR REPORT WAS PREPARED BY ME OR UNDER MY DIRECT SUPERVISION AND THAT I AM A DULY LICENSED PROFESSIONAL ENGINEER UNDER THE LAWS OF THE STATE OF MINNESOTA.

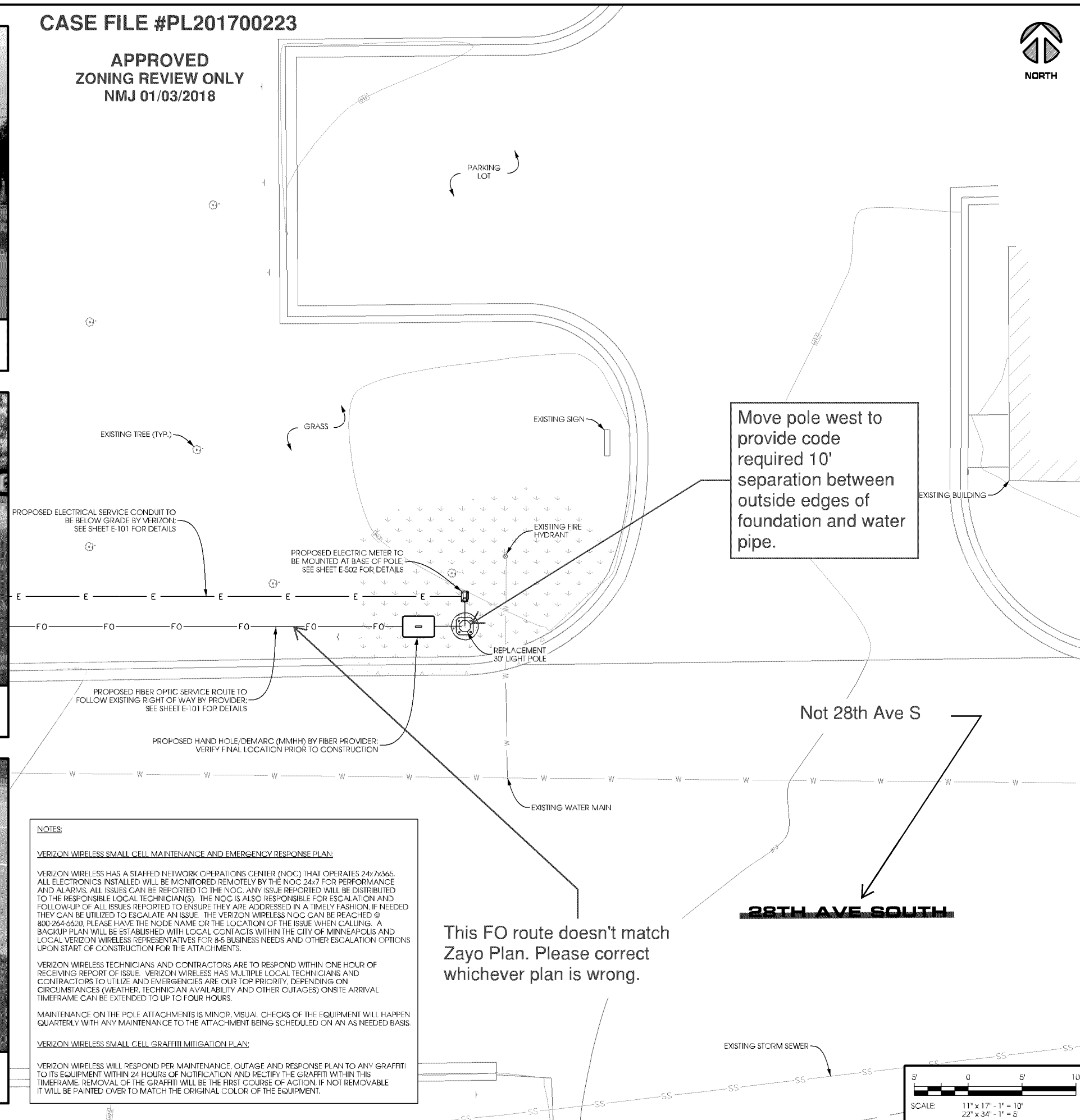
MIN LR 28TH AVE SC1
BLOOMINGTON, MN
REPLACEMENT LIGHT POLE
SMALL CELL DRAWINGS

SHEET TITLE

**ENLARGED
SITE PLAN**

SHEET NUMBER

C-102



NOTES:

30' SQUARE POLE DESIGN SHOWN. PROPOSED LIGHT POLE TO BE SUPPLIED BY AND PURCHASED BY VERIZON. THE LIGHT POLE TO BE SET BY VERIZON CONTRACTOR AND COORDINATED WITH METRO TRANSIT. PROPOSED POLE TO BE RETROFITTED WITH PROPOSED LIGHT POLE PENETRATION, AND INSTALLED BY CERTIFIED WELDER.

SALVAGE EXISTING POLE AND DELIVER TO METRO TRANSIT. LOCATION TO BE DETERMINED.

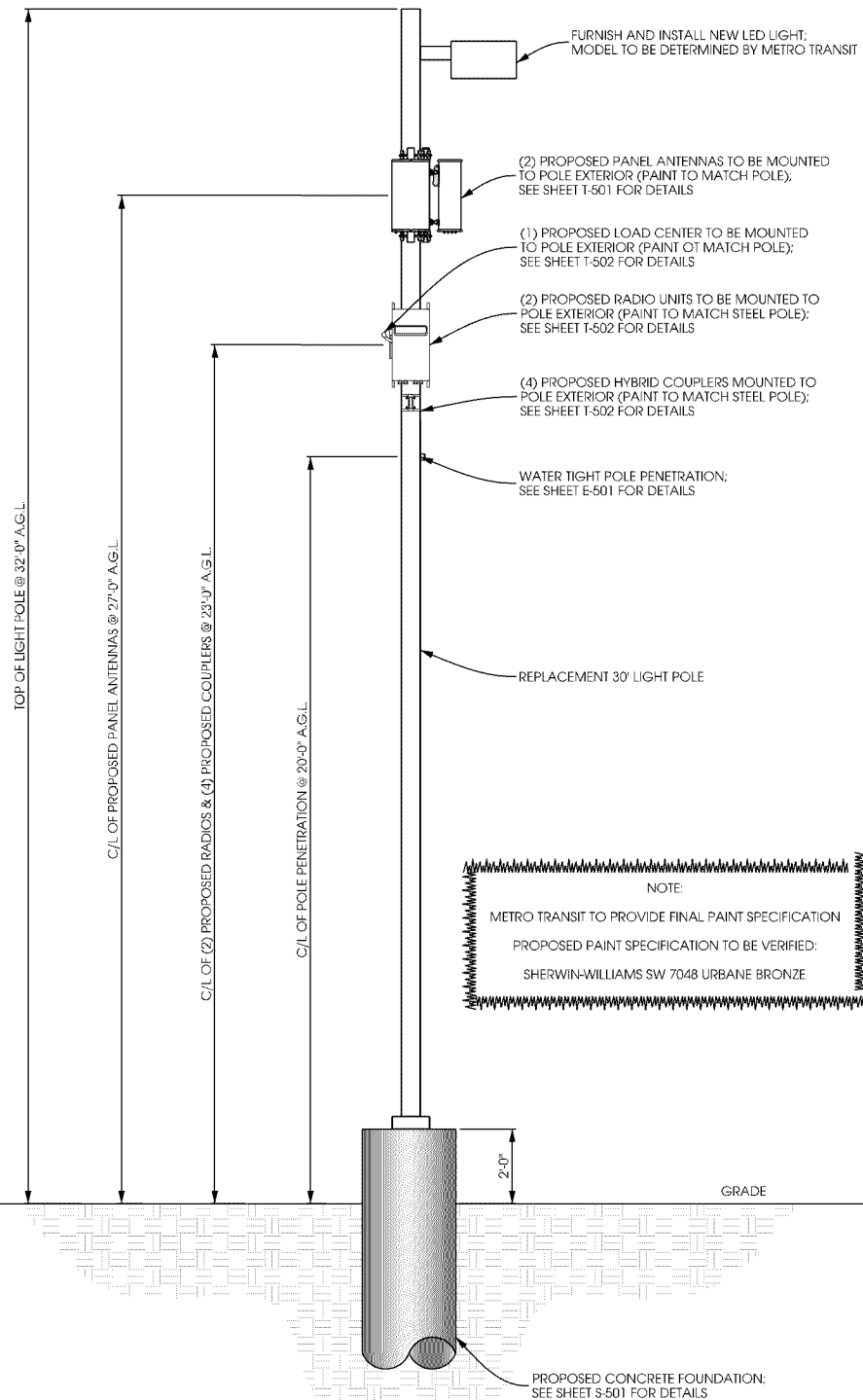
NOTES:

TYPICAL INSTALLATION SHOWN.

ALL PROPOSED POLE MOUNTED EQUIPMENT TO BE PAINTED TO MATCH POLE.

ALL POLE PENETRATIONS FOR ANTENNA AND RRU CABLE ROUTING TO BE MINIMIZED.

ALL PROPOSED ELEVATIONS ARE SHOWN ABOVE GROUND LEVEL.



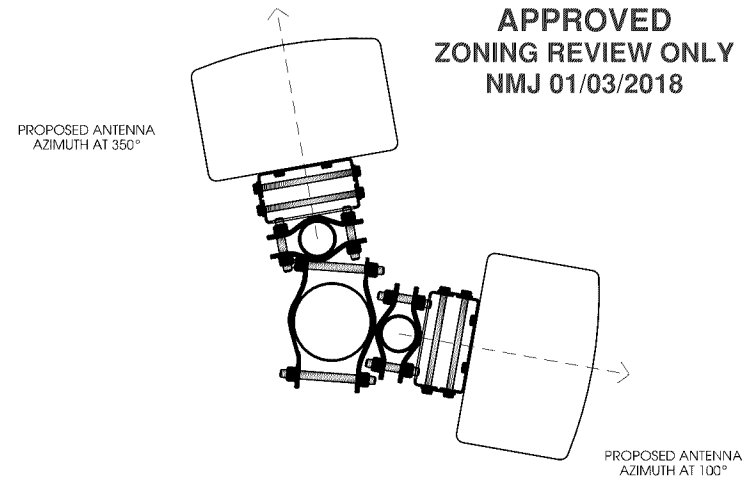
A POLE ELEVATION
SCALE: 11" x 17" - 1" = 5'-0"
22" x 34" - 1" = 2'-6"



B SITE ELEVATION



CASE FILE #PL201700223



C ANTENNA ORIENTATION
SCALE: NTS

ANTENNAS				
QUANTITY	MAKE	MODEL	CENTERLINE	AZIMUTH
1	COMMSCOPE	HBXX-6513DS-A2M	27'	100°
1	COMMSCOPE	HBXX-6513DS-A2M	27'	350°

EQUIPMENT			
QUANTITY	TYPE	MAKE	MODEL
1	RRU	ERICSSON	RRUS32 B66
1	RRU	ERICSSON	RRUS32 B2
4	COUPLER	CLEARLINK	HC3/698-2.7K/MS/4310

CABLING				
QUANTITY	TYPE	MAKE	MODEL	DIAMETER
16	JUMPER	COMMSCOPE	LFD4-50	1/2"

D ANTENNA AND CABLING
SCALE: NTS

verizon

ke
consulting, LLC
3101 Grandview Blvd
Madison, WI 53713
608.516.0233

Edge
Consulting Engineers, Inc.
2101 Highway 13 W
Burnsville, MN 55337
608.644.1449 voice
608.644.1549 fax
www.edgeconsult.com

PROJECT NO: 20161462527
LOCATION CODE: 425930
EDGE PROJECT NO: 14967
CHECKED BY: OGD

REV.	DATE	DESCRIPTION	INT.
A	06/22/2017	PRELIM SMALL CELL DWGS	NAT
B	08/01/2017	PRELIM SMALL CELL DWGS	ITB
C	08/17/2017	PRELIM SMALL CELL DWGS	ITB
D	09/19/2017	FINAL DWGS	DGS

APPROVED -
SEE SHEET G-001 FOR
ENGINEER SEAL

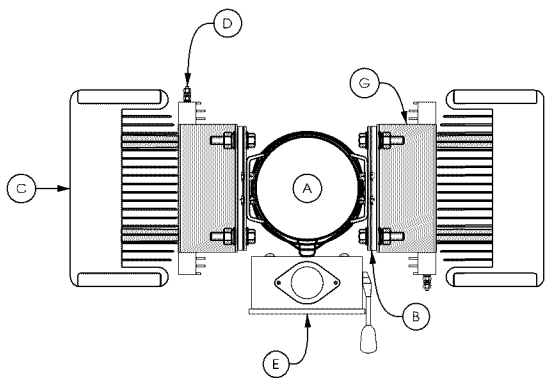
I HEREBY CERTIFY THAT THIS PLAN, SPECIFICATION, OR REPORT WAS PREPARED BY ME OR UNDER MY DIRECT SUPERVISION AND THAT I AM A DULY LICENSED PROFESSIONAL ENGINEER UNDER THE LAWS OF THE STATE OF MINNESOTA.

MIN LR 28TH AVE SC1
BLOOMINGTON, MN
REPLACEMENT LIGHT POLE
SMALL CELL DRAWINGS

SHEET TITLE
SITE ELEVATION

SHEET NUMBER
T-201

CASE FILE #PL201700223



TOP VIEW

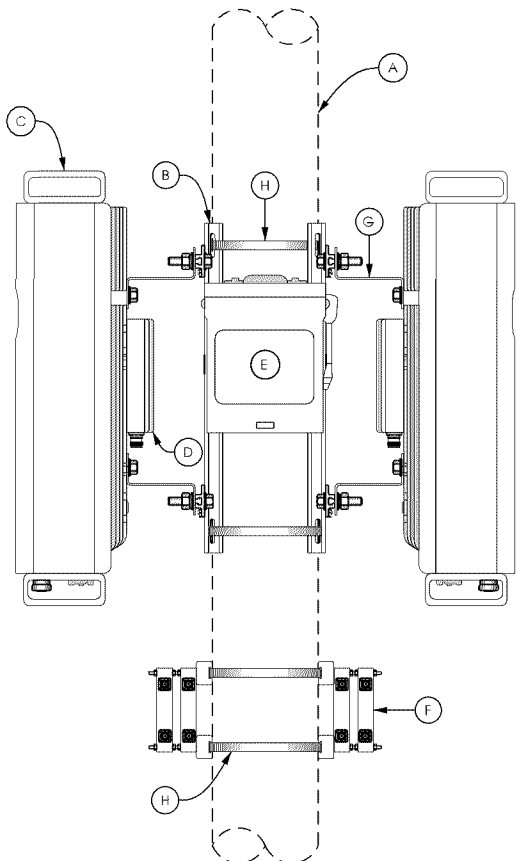
NOTE:

PAINT ALL ANTENNAS, OUTDOOR EQUIPMENT, CABLING, AND MOUNTING HARDWARE TO MATCH THE POLE

KEYED NOTES:

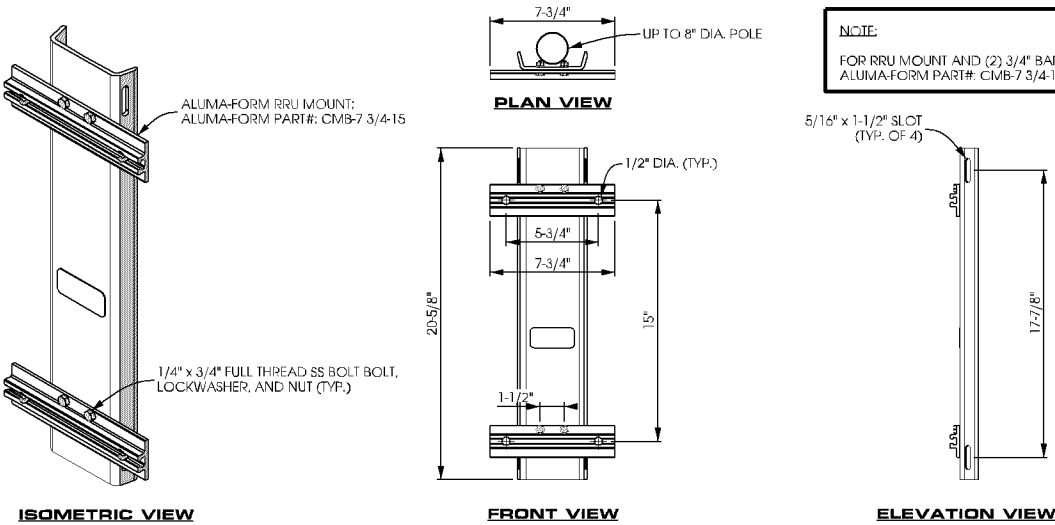
- A. UP TO 8" DIA. POLE
B. REMOTE RADIO UNIT (TYP. OF 2); SEE DETAIL B THIS SHEET
C. REMOTE RADIO UNIT (TYP. OF 2); SEE DETAIL C THIS SHEET
D. POWER SUPPLY UNIT SECURED TO BACK OF REMOTE RADIO UNIT (TYP. OF 2); SEE DETAIL D THIS SHEET
E. LOAD CENTER SECURED WITH HEAVY DUTY STAINLESS STEEL BAND STRAP; SEE DETAIL E THIS SHEET
F. DIPLEXER SECURED WITH HEAVY DUTY STAINLESS STEEL BAND STRAP (TYP. OF 2); SEE DETAIL F THIS SHEET
G. ANGLE ADAPTER MOUNTED TO BACK OF REMOTE RADIO UNIT PER MANUFACTURER'S SPECIFICATIONS (TYP.)
H. HEAVY DUTY STAINLESS STEEL BAND STRAP (TYP.)

APPROVED
ZONING REVIEW ONLY
NMJ 01/03/2018

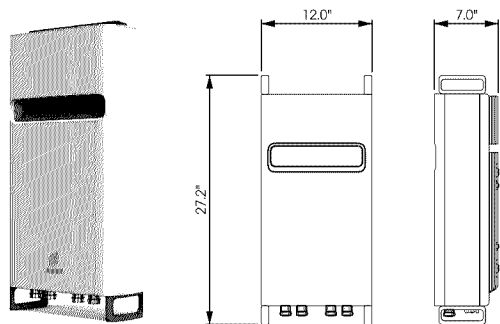


SIDE VIEW

A POLE ELEVATION
SCALE: 11" x 17" - 1/4" = 1'-0"
22" x 34" - 1/2" = 1'-0"

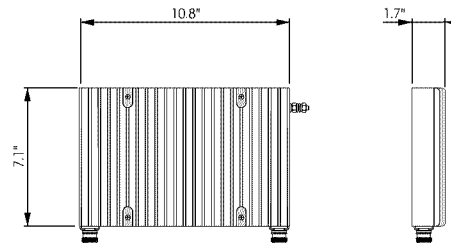


B EQUIPMENT MOUNTING
SCALE: NTS



REMOTE RADIO UNIT:
ERICSSON PART # RRU532
DIMENSIONS: 27.2" x 12.0" x 7.0" (H x W x D)
WEIGHT: 60 LBS

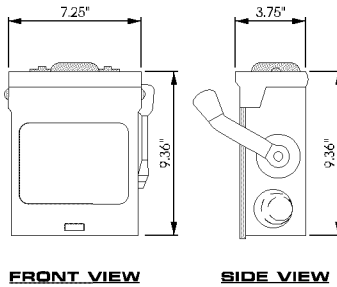
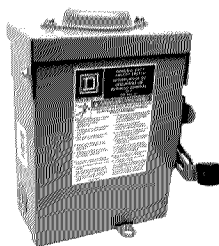
C REMOTE RADIO UNIT
SCALE: NTS



POWER SUPPLY UNIT:
ERICSSON PART # PSU AC-08
DIMENSIONS: 10.8" x 7.1" x 1.9" (H x W x D)
WEIGHT: 11.5 LBS

D POWER SUPPLY UNIT
SCALE: NTS

MANUFACTURER: SCHNEIDER ELECTRIC
MODEL #: SQUARE D DU21RB
NUMBER OF POLES: 2
MAX. CURRENT RATING: 30 A
VOLTAGE RATING: 240 VAC
DIMENSIONS: 9.36" x 7.25" x 3.75"
WEIGHT: 4.62 lbs
CONTRACTOR TO INSTALL LED LIGHT



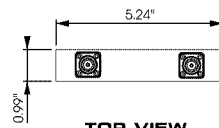
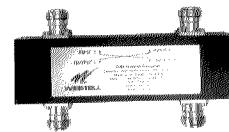
FRONT VIEW

SIDE VIEW

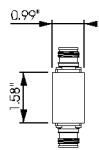
BOTTOM VIEW

E LOAD CENTER
SCALE: NTS

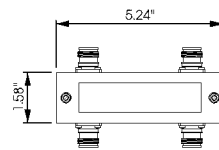
MANUFACTURER: WESTELL
MODEL #: CLEARLINK-HC3/698-2.7K/MS/4310
LOW PIM HYBRID COUPLER FEATURES VERY LOW INSERTION LOSS AND POWER HANDLING CAPABILITY FOR 200 WATTS AVERAGE POWER. COUPLED PORTS ARE 90° OUT OF PHASE AND THE ISOLATED PORT HELPS PROTECT AGAINST MISMATCHED LOADS ON THE COUPLED PORTS.
DIMENSIONS: 5.4" x 1.58" x 0.99"



TOP VIEW



SIDE VIEW



FRONT VIEW

F DIPLEXER
SCALE: NTS

verizon



3101 Grandview Blvd
Madison, WI 53713
608.644.1549

Edge
Consulting Engineers, Inc.

2101 Highway 13 W
Burnsville, MN 55337
608.644.1449 voice
608.644.1549 fax
www.edgeconsult.com

PROJECT NO: 20161462527
LOCATION CODE: 425930
EDGE PROJECT NO: 14967
CHECKED BY: OGD

REV.	DATE	DESCRIPTION	INT.
A	06/22/2017	PRELIM SMALL CELL DWGS	NAT
B	08/01/2017	PRELIM SMALL CELL DWGS	TTB
C	08/17/2017	PRELIM SMALL CELL DWGS	TTB
D	09/19/2017	FINAL DWGS	DGS

- APPROVED -
SEE SHEET G-001 FOR
ENGINEER SEAL

I HEREBY CERTIFY THAT THIS PLAN, SPECIFICATION, OR REPORT WAS PREPARED BY ME OR UNDER MY DIRECT SUPERVISION AND THAT I AM A DULY LICENSED PROFESSIONAL ENGINEER UNDER THE LAWS OF THE STATE OF MINNESOTA.

MIN LR 28TH AVE SC1
BLOOMINGTON, MN
REPLACEMENT LIGHT POLE
SMALL CELL DRAWINGS

SHEET TITLE
**EQUIPMENT
DETAILS**

SHEET NUMBER
T-502

The Verizon logo, consisting of the word "verizon" in a bold, lowercase sans-serif font, followed by a checkmark symbol.

MIN LR 28TH AVE SC2

20161462529

425932

SMALL CELL

INSTALLATION TYPE: REPLACEMENT 30' LIGHT POLE



3101 Grandview Blvd.
Madison, WI 53713
608 516 0233


Edge

Consulting Engineers, Inc.

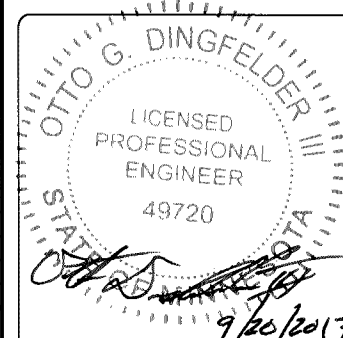
2101 Highway 13 W
Burnsville, MN 55337
608.644.1449 voice
608.644.1549 fax
www.edgeconsult.com

PROJECT NO: 20161462529

LOCATION CODE:	425932
----------------	--------

EDGE PROJECT NO: 15116

CHECKED BY: OGD

[illegible]

I HEREBY CERTIFY THAT THIS PLAN, SPECIFICATION, OR REPORT WAS PREPARED BY ME OR UNDER MY DIRECT SUPERVISION AND THAT I AM A DULY LICENSED PROFESSIONAL ENGINEER UNDER THE LAWS OF THE STATE OF MINNESOTA.

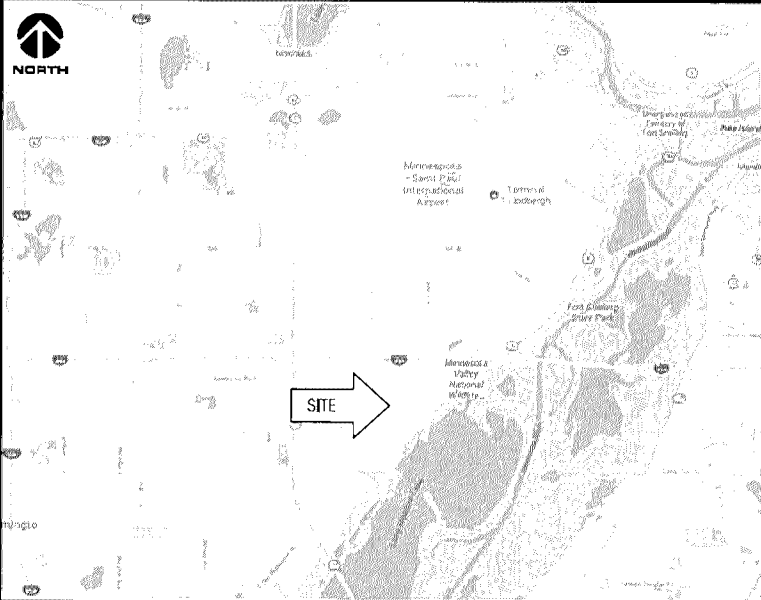
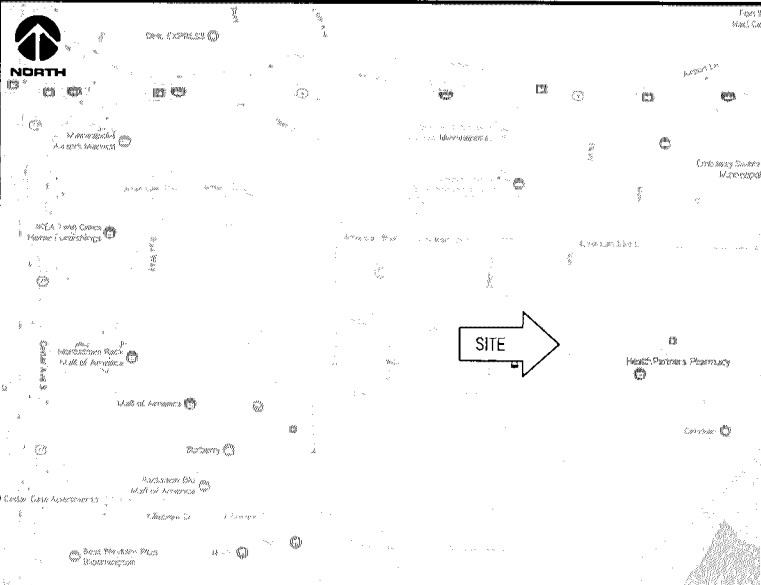
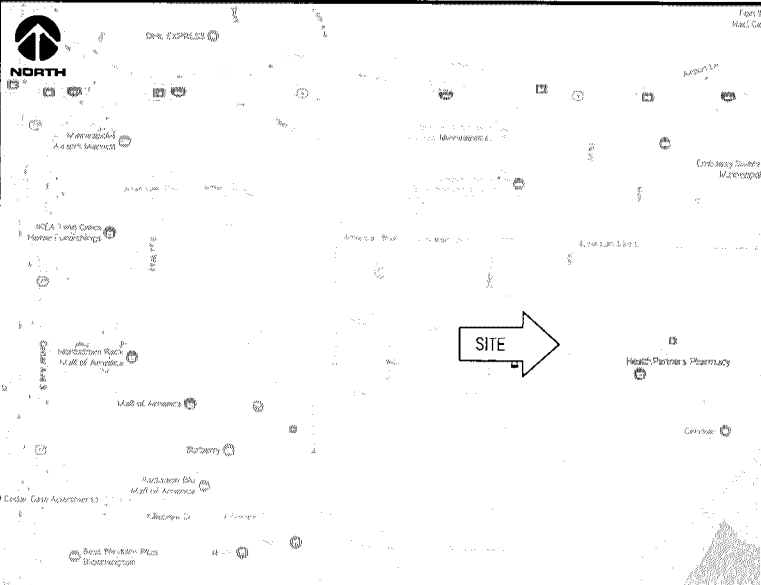

MIN LR 28TH AVE SC2
BLOOMINGTON, MN
REPLACEMENT LIGHT POLE
SMALL CELL DRAWINGS

SHEET TITLE

**TITLE SHEET &
PROJECT DATA**

SHEET NUMBER

G-001

SITE INFORMATION	AREA MAP	PROJECT DESCRIPTION/SOW	SHEET INDEX
APPROXIMATE ADDRESS: 30TH AVENUE SOUTH AND LINDAU LANE BLOOMINGTON, MINNESOTA 55425 HENNEPIN COUNTY		<ul style="list-style-type: none"> INSTALL (1) REPLACEMENT 30-FT STEEL LIGHT POLE AND ASSOCIATED CONCRETE FOUNDATION INSTALLATION OF PANEL ANTENNAS INSTALLATION OF ERICSSON RRU'S AND POWER CONVERTERS INSTALLATION OF LOAD CENTER INSTALLATION OF HYBRID COUPLERS INSTALLATION OF HAND HOLE FOR FIBER NEAR POLE BASE BY PROVIDER INSTALLATION OF CONDUIT FOR FIBER BETWEEN HAND HOLE AND POLE BASE BELOW GRADE BY VERIZON INSTALLATION OF CONDUIT FOR FIBER BETWEEN HAND HOLE AND ROW BELOW GRADE BY PROVIDER INSTALLATION OF GROUND RODS AROUND POLE FOUNDATION INSTALLATION OF CONDUIT FOR NEW ELECTRIC SERVICE BY VERIZON ALL OTHER CONSTRUCTION RELATED ACTIVITIES TO BE COMPLETED BY OTHERS 	NO: SHEET TITLE
SITE COORDINATES: LAT: 44°-51'-22.69"N LONG: 93°-13'-48.51"W GROUND ELEVATION: 817.0' AMSL (PER 1A CERTIFICATE)			G-001 TITLE SHEET & PROJECT DATA
POLE HEIGHT: 30'-0" T.O.C.			G-002 GENERAL SPECIFICATIONS
MAXIMUM APPURTENANCE HEIGHT: 30'-0" A.G.L.			G-003 GENERAL SPECIFICATIONS
			G-004 METRO TRANSIT SITE REQUIREMENTS*
			G-005 METRO TRANSIT SITE REQUIREMENTS*
			C-101 SITE PLAN
			C-102 ENLARGED SITE PLAN
			T-201 SITE ELEVATION
			T-501 ANTENNA DETAILS
			T-502 EQUIPMENT DETAILS
			S-001 STRUCTURAL NOTES **
			S-501 STRUCTURAL DETAILS **
			E-101 UTILITY PLAN
			E-102 GROUNDING PLAN
			E-501 UTILITY DETAILS
			E-502 UTILITY DETAILS
			E-503 GROUNDING DETAILS
			* COMPLETED BY OTHERS
			** REVIEWED AND APPROVED BY STRUCTURAL ENGINEER
APPLICABLE CODES	LOCATION MAP	PROJECT DIRECTORY	11"x17" PLOT WILL BE HALF SCALE UNLESS OTHERWISE NOTED
ALL WORK SHALL COMPLY WITH THE FOLLOWING APPLICABLE CODES:		<p>LESSEE: VERIZON WIRELESS 10801 BUSH LAKE RD BLOOMINGTON, MN 55438 CONTACT: COURTNEY BEDNARZ PHONE: 952.946.4694</p> <p>RE ENGINEER: VERIZON WIRELESS 10801 BUSH LAKE RD BLOOMINGTON, MN 55438 CONTACT: JOHN MULLINS PHONE: 612.791.1710</p> <p>SITE ACQUISITION: KE CONSULTING, LLC 3101 GRANDVIEW BLVD MADISON, WI 53713 CONTACT: KIM A. EGAN PHONE: 608.516.0233</p> <p>ENGINEERING COMPANY: EDGE CONSULTING ENGINEERS, INC. 2101 HIGHWAY 13 W BURNSVILLE, MN 55337 CONTACT: OTTO DINGFELDER III, P.E. PHONE: 608.644.1449</p> <p>LESSOR: METRO TRANSIT 560 SIXTH AVENUE NORTH MINNEAPOLIS, MN 55411 PHONE: 612.373.3333</p>	CONTRACTOR SHALL VERIFY ALL PLANS AND EXISTING DIMENSIONS/CONDITIONS ON SITE. IMMEDIATELY NOTIFY ENGINEER OF ANY DISCREPANCIES PRIOR TO PERFORMING ANY WORK OR BE RESPONSIBLE FOR THE SAME.
- 2012 INTERNATIONAL BUILDING CODE			ENGINEER OF RECORD
- 2014 NATIONAL ELECTRIC CODE			
- TIA/EIA-222-G OR LATEST EDITION			
IN THE EVENT OF CONFLICT, THE MOST RESTRICTIVE CODE SHALL PREVAIL			
			EDGE CONSULTING ENGINEERS, INC. CONTACT: OTTO DINGFELDER III (PE # 49720 (MN)) PHONE: 608.644.1449
			STRUCTURAL REVIEW
			COMPLETED BY: EDGE CONSULTING ENGINEERS, INC. PROJECT #: 15116 DATE: 09/19/2017
			CONTRACTOR TO REVIEW STRUCTURAL REPORT IN ITS ENTIRETY. ANY DISCREPANCIES OR DISAGREEMENTS BETWEEN THE REPORT AND THESE PLANS SHOULD BE RESOLVED PRIOR TO CONSTRUCTION

C:\5100\5116\CAD\Plot\CD6\G-001.dgn

CASE FILE #PL201700223

APPROVED
ZONING REVIEW ONLY
NMJ 01/03/2018



verizon



3101 Grandview Blvd
Madison, WI 53713
608.644.1549



2101 Highway 13 W
Burnsville, MN 55337
608.644.1449 voice
608.644.1549 fax
www.edgeconsult.com

PROJECT NO: 20161462529
LOCATION CODE: 425932
EDGE PROJECT NO: 15116
CHECKED BY: OGD

REV.	DATE	DESCRIPTION	INT.
A	06/22/2017	PRELIM SMALL CELL DWGS	NAT
B	08/01/2017	PRELIM SMALL CELL DWGS	TTB
C	08/17/2017	PRELIM SMALL CELL DWGS	TTB
D	09/19/2017	FINAL DWGS	DGS

- APPROVED -
SEE SHEET G-001 FOR
ENGINEER SEAL

I HEREBY CERTIFY THAT THIS PLAN, SPECIFICATION,
OR REPORT WAS PREPARED BY ME OR UNDER MY
DIRECT SUPERVISION AND THAT I AM A DULY
LICENSED PROFESSIONAL ENGINEER UNDER THE
LAWS OF THE STATE OF MINNESOTA.

MIN LR 28TH AVE SC2
BLOOMINGTON, MN
REPLACEMENT LIGHT POLE
SMALL CELL DRAWINGS

SHEET TITLE

SITE PLAN

SHEET NUMBER

C-101



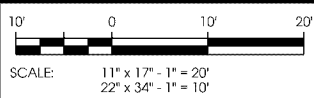
A AERIAL OVERVIEW



B SITE OVERVIEW
(LOOKING WEST)



C EXISTING POWER SOURCE



LA15100\15116\CAD\PLN\CD\A/C-101.dgn



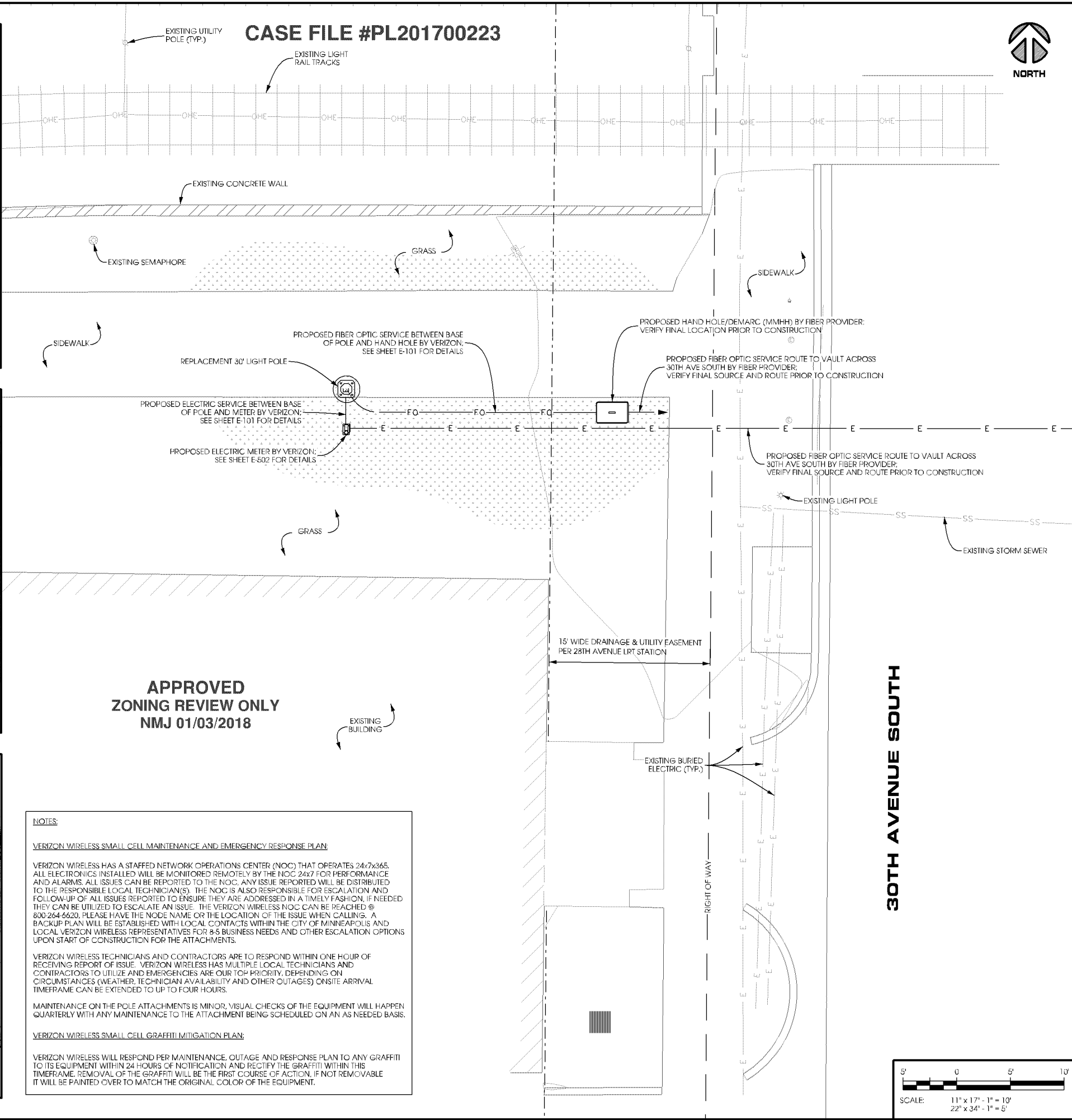
A SITE OVERVIEW
(LOOKING WEST)



B SITE OVERVIEW
(LOOKING EAST)



C PROPOSED HAND HOLE
LOCATION



verizon



3101 Grandview Blvd
Madison, WI 53713
608.644.1549 fax
www.edgeconsult.com



2101 Highway 13 W
Burnsville, MN 55337
608.644.1449 voice
608.644.1549 fax
www.edgeconsult.com

PROJECT NO: 20161462529
LOCATION CODE: 425932
EDGE PROJECT NO: 15116
CHECKED BY: OGD

REV.	DATE	DESCRIPTION	INT.
A	06/22/2017	PRELIM SMALL CELL DWGS	NAT
B	08/01/2017	PRELIM SMALL CELL DWGS	TTB
C	08/17/2017	PRELIM SMALL CELL DWGS	TTB
D	09/19/2017	FINAL DWGS	DGS

- APPROVED -
SEE SHEET G-001 FOR
ENGINEER SEAL

I HEREBY CERTIFY THAT THIS PLAN, SPECIFICATION, OR REPORT WAS PREPARED BY ME OR UNDER MY DIRECT SUPERVISION AND THAT I AM A DULY LICENSED PROFESSIONAL ENGINEER UNDER THE LAWS OF THE STATE OF MINNESOTA.

MIN LR 28TH AVE SC2
BLOOMINGTON, MN
REPLACEMENT LIGHT POLE
SMALL CELL DRAWINGS

SHEET TITLE

ENLARGED
SITE PLAN

SHEET NUMBER

C-102

NOTES:

30' SQUARE POLE DESIGN SHOWN. PROPOSED LIGHT POLE TO BE SUPPLIED BY AND PURCHASED BY VERIZON. THE LIGHT POLE TO BE SET BY VERIZON CONTRACTOR AND COORDINATED WITH METRO TRANSIT. PROPOSED POLE TO BE RETROFITTED WITH PROPOSED LIGHT POLE PENETRATION, AND INSTALLED BY CERTIFIED WELDER.

SALVAGE EXISTING POLE AND DELIVER TO METRO TRANSIT. LOCATION TO BE DETERMINED.

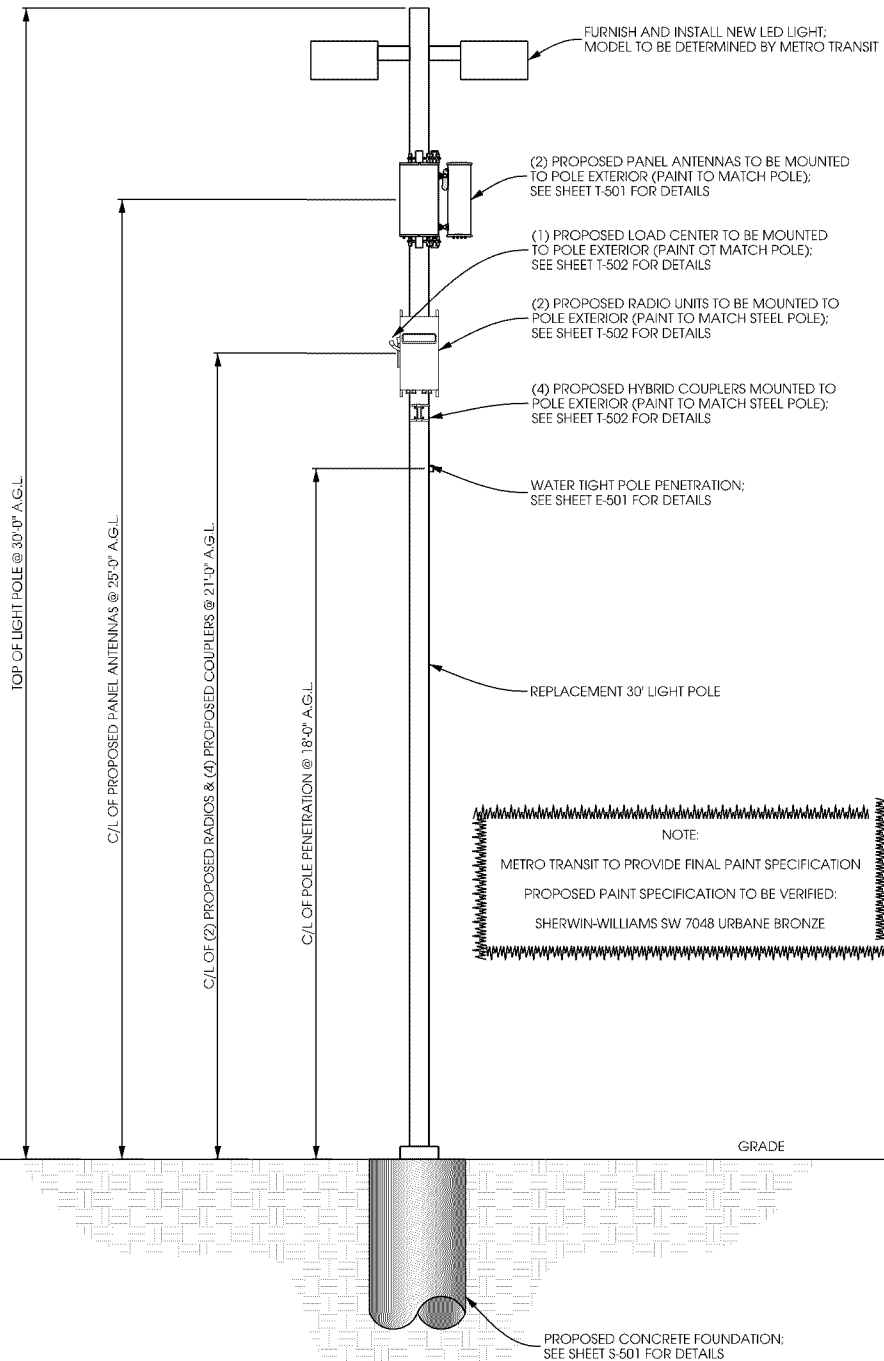
NOTES:

TYPICAL INSTALLATION SHOWN.

ALL PROPOSED POLE MOUNTED EQUIPMENT TO BE PAINTED TO MATCH POLE.

ALL POLE PENETRATIONS FOR ANTENNA AND RRU CABLE ROUTING TO BE MINIMIZED.

ALL PROPOSED ELEVATIONS ARE SHOWN ABOVE GROUND LEVEL.



A POLE ELEVATION

SCALE: 11" x 17" - 1" = 5'-0"
22" x 34" - 1" = 2'-6"

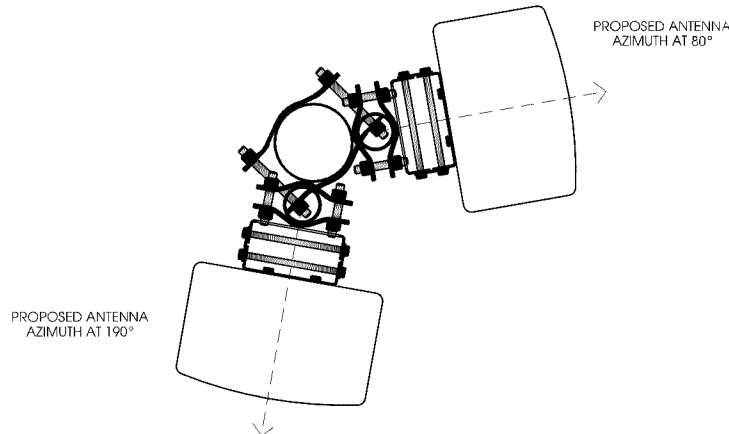


B SITE ELEVATION



CASE FILE #PL201700223

APPROVED
ZONING REVIEW ONLY
NMJ 01/03/2018



C ANTENNA ORIENTATION

SCALE: NTS

ANTENNAS				
QUANTITY	MAKE	MODEL	CENTERLINE	AZIMUTH
1	COMMSCOPE	HBXX-6513DS-A2M	25'	80°
1	COMMSCOPE	HBXX-6513DS-A2M	25'	190°

EQUIPMENT			
QUANTITY	TYPE	MAKE	MODEL
1	RRU	ERICSSON	RRUS32 B66
1	RRU	ERICSSON	RRUS32 B2
4	COUPLER	CLEARLINK	HC3-698-2.7K/MS/4310

CABLING				
QUANTITY	TYPE	MAKE	MODEL	DIAMETER
16	JUMPER	COMMSCOPE	LFD4-50	1/2"

D ANTENNA AND CABLING

SCALE: NTS

verizon



3101 Grandview Blvd
Madison, WI 53713
608.516.0233



2101 Highway 13 W
Burnsville, MN 55337
608.644.1449 voice
608.644.1549 fax
www.edgeconsult.com

PROJECT NO: 20161462529

LOCATION CODE: 425932

EDGE PROJECT NO: 15116

CHECKED BY: OGD

REV.	DATE	DESCRIPTION	INT.
A	06/22/2017	PRELIM SMALL CELL DWGS	NAT
B	08/01/2017	PRELIM SMALL CELL DWGS	TTB
C	08/17/2017	PRELIM SMALL CELL DWGS	TTB
D	09/19/2017	FINAL DWGS	DGS

- APPROVED -
SEE SHEET G-001 FOR
ENGINEER SEAL

I HEREBY CERTIFY THAT THIS PLAN, SPECIFICATION, OR REPORT WAS PREPARED BY ME OR UNDER MY DIRECT SUPERVISION AND THAT I AM A DULY LICENSED PROFESSIONAL ENGINEER UNDER THE LAWS OF THE STATE OF MINNESOTA.

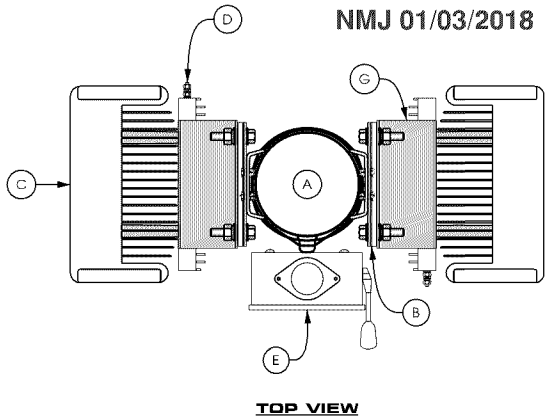
MIN LR 28TH AVE SC2
BLOOMINGTON, MN
REPLACEMENT LIGHT POLE
SMALL CELL DRAWINGS

SHEET TITLE
SITE ELEVATION

SHEET NUMBER
T-201

CASE FILE #PL201700223

APPROVED
ZONING REVIEW ONLY
NMJ 01/03/2018



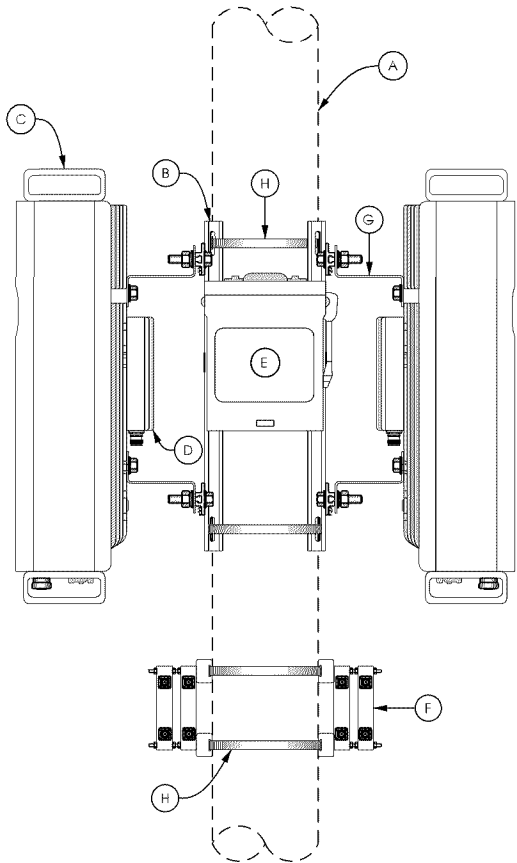
TOP VIEW

NOTE:

PAINT ALL ANTENNAS, OUTDOOR EQUIPMENT, CABLING, AND MOUNTING HARDWARE TO MATCH THE POLE

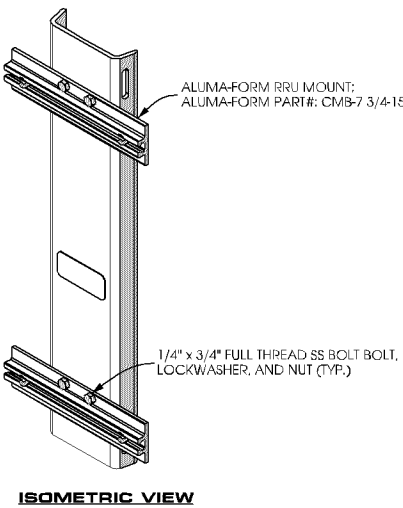
KEYED NOTES:

- A. UP TO 8" DIA. POLE
B. REMOTE RADIO UNIT MOUNT (TYP. OF 2); SEE DETAIL B THIS SHEET
C. REMOTE RADIO UNIT (TYP. OF 2); SEE DETAIL C THIS SHEET
D. POWER SUPPLY UNIT SECURED TO BACK OF REMOTE RADIO UNIT (TYP. OF 2); SEE DETAIL D THIS SHEET
E. LOAD CENTER SECURED WITH HEAVY DUTY STAINLESS STEEL BAND STRAP; SEE DETAIL E THIS SHEET
F. DIPLEXER SECURED WITH HEAVY DUTY STAINLESS STEEL BAND STRAP (TYP. OF 2); SEE DETAIL F THIS SHEET
G. ANGLE ADAPTER MOUNTED TO BACK OF REMOTE RADIO UNIT PER MANUFACTURER'S SPECIFICATIONS (TYP.)
H. HEAVY DUTY STAINLESS STEEL BAND STRAP (TYP.)

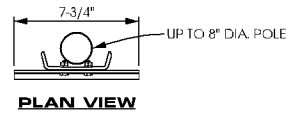


SIDE VIEW

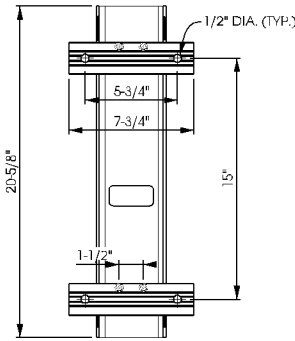
A POLE ELEVATION
SCALE: 11" x 17" - 1/4" = 1'-0"
22" x 34" - 1/2" = 1'-0"



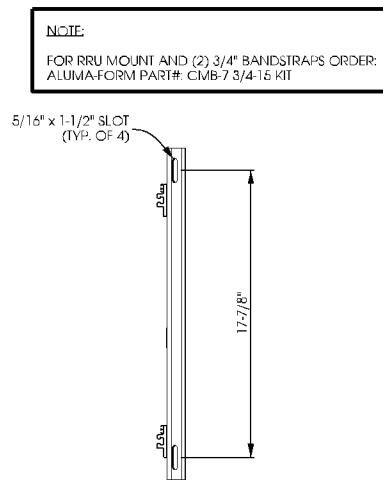
ISOMETRIC VIEW



PLAN VIEW



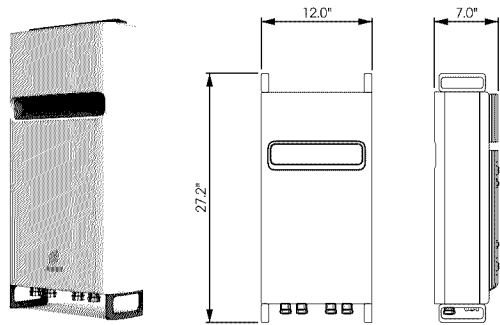
FRONT VIEW



ELEVATION VIEW

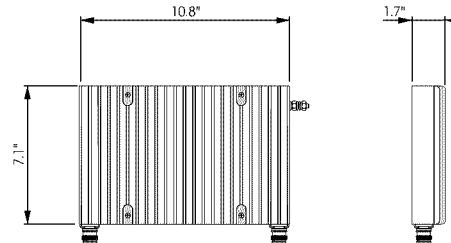
NOTE:
FOR RRU MOUNT AND (2) 3/4" BANDSTRAPS ORDER:
ALUMA-FORM PART#: CMB-7 3/4-15 KIT

B EQUIPMENT MOUNTING
SCALE: NTS



REMOTE RADIO UNIT:
ERICSSON PART # RRU532
DIMENSIONS: 27.2" x 12.0" x 7.0" (H x W x D)
WEIGHT: 60 LBS

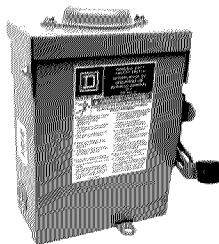
C REMOTE RADIO UNIT
SCALE: NTS



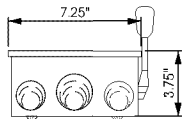
POWER SUPPLY UNIT:
ERICSSON PART # PSU AC-08
DIMENSIONS: 10.8" x 7.1" x 1.9" (H x W x D)
WEIGHT: 11.5 LBS

D POWER SUPPLY UNIT
SCALE: NTS

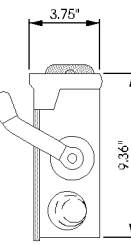
MANUFACTURER: SCHNEIDER ELECTRIC
MODEL #: SQUARE D DU221RB
NUMBER OF POLES: 2
MAX. CURRENT RATING: 30 A
VOLTAGE RATING: 240 VAC
DIMENSIONS: 9.36" x 7.25" x 3.75"
WEIGHT: 4.62 lbs
CONTRACTOR TO INSTALL LED LIGHT



FRONT VIEW



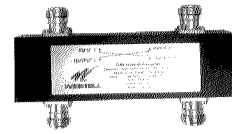
BOTTOM VIEW



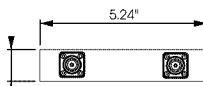
SIDE VIEW

E LOAD CENTER
SCALE: NTS

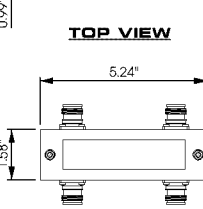
MANUFACTURER: WESTELL
MODEL #: CLEARLINK-HC3/698-2.7K/MS/4310
LOW PIM HYBRID COUPLER FEATURES VERY LOW INSERTION LOSS AND POWER HANDLING CAPABILITY FOR 200 WATTS AVERAGE POWER. COUPLED PORTS ARE 90° OUT OF PHASE AND THE ISOLATED PORT HELPS PROTECT AGAINST MISMATCHED LOADS ON THE COUPLED PORTS.
DIMENSIONS: 5.4" x 1.58" x 0.99"



TOP VIEW



SIDE VIEW



FRONT VIEW

F DIPLEXER
SCALE: NTS

verizon



3101 Grandview Blvd
Madison, WI 53713
608.644.1549

Edge
Consulting Engineers, Inc.

2101 Highway 13 W
Burnsville, MN 55337
608.644.1449 voice
608.644.1549 fax
www.edgeconsult.com

PROJECT NO: 20161462529
LOCATION CODE: 425932
EDGE PROJECT NO: 15116
CHECKED BY: OGD

REV.	DATE	DESCRIPTION	INT.
A	06/22/2017	PRELIM SMALL CELL DWGS	NAT
B	08/01/2017	PRELIM SMALL CELL DWGS	TTB
C	08/17/2017	PRELIM SMALL CELL DWGS	TTB
D	09/19/2017	FINAL DWGS	DGS

- APPROVED -
SEE SHEET G-001 FOR
ENGINEER SEAL

I HEREBY CERTIFY THAT THIS PLAN, SPECIFICATION, OR REPORT WAS PREPARED BY ME OR UNDER MY DIRECT SUPERVISION AND THAT I AM A DULY LICENSED PROFESSIONAL ENGINEER UNDER THE LAWS OF THE STATE OF MINNESOTA.

MIN LR 28TH AVE SC2
BLOOMINGTON, MN
REPLACEMENT LIGHT POLE
SMALL CELL DRAWINGS

SHEET TITLE
**EQUIPMENT
DETAILS**

SHEET NUMBER
T-502