



MIN MOA ODAS EAST
FLAT LOT: EAST

SITE PHOTO



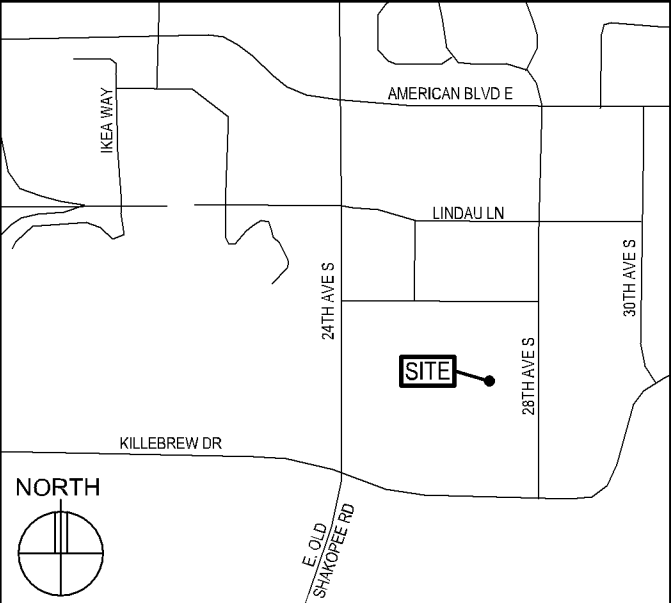
PROJECT DESCRIPTION

WORK ITEM	SUPPLIED BY
INSTALL (2) ANTENNAS	VZW
INSTALL (4) ROUS	VZW
INSTALL CABLING	GC
INSTALL (1) DISCONNECT BOX	GC
INSTALL (1) REPLACEMENT POLE	GC
INSTALL SHROUD ENCLOSURE	GC

GENERAL NOTES

- In the event that Special Inspections are not performed in compliance with the contract terms, bid specifications and/or specified form, the General Contractor will be liable for all damages, construction performance, failures, and corrective actions related to the same.
- The following general notes shall apply to drawings and govern unless otherwise noted or specified.
- The work delineated in these drawings and described in the specifications shall conform to codes, standards and regulations that have jurisdiction in the state of MN, and the city of BLOOMINGTON.
- Requirements and regulations pertaining to R.F. safety codes and practices must be incorporated in the work even though they may not be listed individually and separately in either the drawings or the specifications.
- Compare field conditions with architectural and engineering drawings. Any discrepancies shall be directed to the Architect for clarification prior to fabrication and/or construction. Submit necessary shop drawings prior to fabrication for approval by the Architect. No information or details on these sheets may be used without the permission of the owner, or the architect.
- Do not scale drawings! 11" x 17" drawings to scale 24" x 36" drawings scale multiply by 2.
- Unless otherwise shown or noted, typical details shall be used where applicable.
- Details shall be considered typical at similar conditions.
- Safety measures: The contractor shall be solely and completely responsible for the conditions of the job site, including safety of the persons and property and for independent engineering reviews of these conditions. The Architect's or Engineers' job site review is not intended to include review of the adequacy of the contractor's safety measures.
- Within these plans and specifications, "Owner" implies VERIZON WIRELESS.
- The work is the responsibility of the general contractor unless noted otherwise.
- The terms "contractor" and "g.c." refer to the owner's general contractor and the general contractor's sub-contractors. It is the general contractor's responsibility to determine the division of work among sub-contractors.
- The general contractor is responsible in obtaining necessary public and private underground utility locate services prior to start of excavating / construction.

VICINITY MAP



LOCATION SCAN



SHEET INDEX

SHEET	SHEET DESCRIPTION
T-1	PROJECT INFORMATION, MAPS, DIRECTIONS, & SHEET INDEX
T-2	AERIAL PHOTO & NODE LOCATIONS
A-1	SITE PLAN & PHOTOS
A-2	ANTENNA PLAN, SPECS, ANTENNA MOUNT DETAILS, & POLE ELEVATIONS
A-3	ROU DETAILS, ROU MOUNT DETAILS, & POLE DETAILS
A-4	SPECIFICATIONS & RF STICKERS
G-1	GROUNDING PLAN, ELEVATION, & DETAILS

ISSUE SUMMARY

REV	DESCRIPTION	SHEET OR DETAIL
A	ISSUED FOR REVIEW 09/07/17	ALL

CONTACTS

LESSOR:	MALL OF AMERICA 60 E. BROADWAY BLOOMINGTON, MN 55425 CPM: ERIC ATKINS (952) 883-8508 EMAIL: ERIC.ATKINS@MOA.NET
LESSEE:	VERIZON WIRELESS 10801 BUSH LAKE ROAD BLOOMINGTON, MN 55438 KATIE POSER (612) 968-6077
ARCHITECT:	DESIGN 1 ARCHITECTS LLC 9973 VALLEY VIEW ROAD EDEN PRAIRIE, MN 55344 (952) 903-9299

PROJECT INFORMATION

SITE NAME:	MIN MOA ODAS EAST FLAT LOT: EAST
SITE ADDRESS:	8201 24TH AVENUE SOUTH BLOOMINGTON, MN 55425
COUNTY:	HENNEPIN
LATITUDE:	N 44° 51' 14.34"
LONGITUDE:	W 93° 14' 0.68"
GROUND ELEVATION:	813' AMSL
ANTENNA TIP HEIGHT:	27'-2.25" AGL
ANTENNA CENTERLINE HEIGHT:	26'-6" AGL
STRUCTURE HEIGHT:	SEE A-2

VERIZON WIRELESS
DEPARTMENTAL APPROVALS

JOB TITLE	NAME	DATE
RF ENGINEER		
CONSTRUCTION ENGINEER		
EQUIPMENT ENGINEER		

LESSOR / LICENSOR APPROVAL

SIGNATURE	PRINTED NAME	DATE
LESSOR / LICENSOR: PLEASE CHECK THE APPROPRIATE BOX BELOW		
<input type="checkbox"/> NO CHANGES.	<input type="checkbox"/> CHANGES NEEDED. SEE COMMENTS.	

NOT FOR
CONSTRUCTION

DESIGN1

9973 VALLEY VIEW RD.
EDEN PRAIRIE, MN 55344
(952) 903-9299
WWW.DESIGN1EP.COM

verizon

10801 BUSH LAKE ROAD
BLOOMINGTON, MN 55438

MIN
MOA ODAS
EAST FLAT
LOT: EAST

8201 24TH AVENUE SOUTH
BLOOMINGTON, MN 55425

SHEET CONTENTS:
CONTACTS
ISSUE SUMMARY
SHEET INDEX
DEPARTMENTAL APPROVALS
LESSOR APPROVAL
PROJECT INFORMATION
VICINITY MAP
GENERAL NOTES

DRAWN BY: RMK
DATE: 08/28/17
CHECKED BY: TAB
REV. A 09/07/17

T-1



NOT FOR
CONSTRUCTION

DESIGN1

9973 VALLEY VIEW RD.
EDEN PRAIRIE, MN 55344
(952) 903-9299
WWW.DESIGN1EP.COM

verizon

10801 BUSH LAKE ROAD
BLOOMINGTON, MN 55438

MIN
MOA ODAS
EAST FLAT
LOT: EAST

8201 24TH AVENUE SOUTH
BLOOMINGTON, MN 55425

SHEET CONTENTS:
AERIAL PHOTO WITH
NODE LOCATIONS

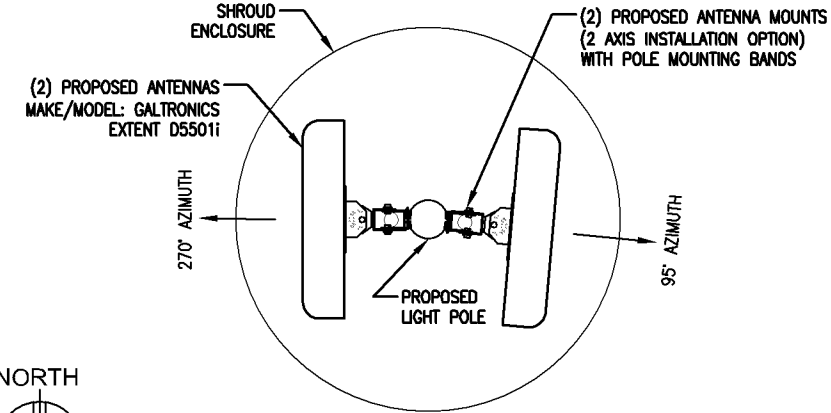
DRAWN BY:	RMK
DATE:	08/28/17
CHECKED BY:	TAB
REV. A	09/07/17

1 AERIAL PHOTO - NODE LOCATIONS
SCALE: N.T.S.

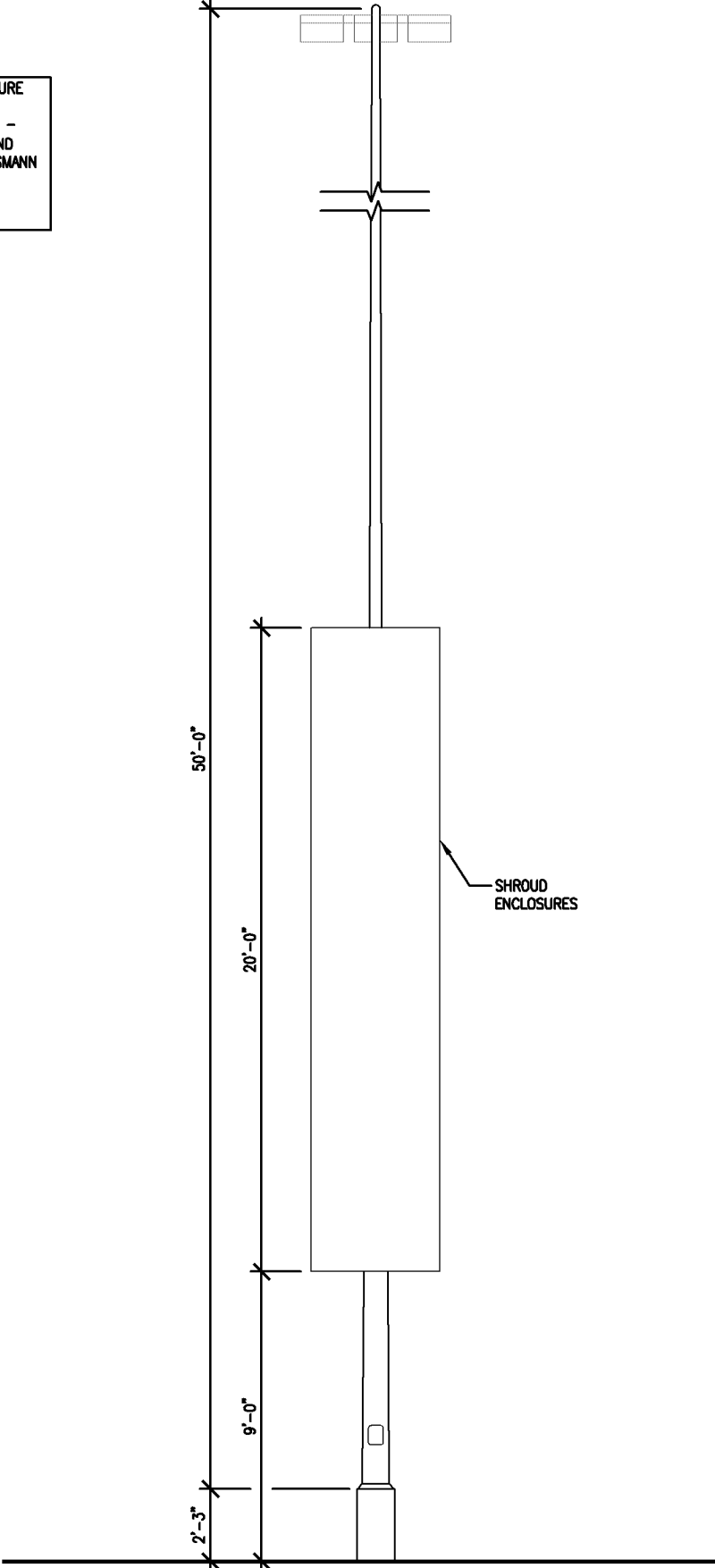


- NOTE:
- 10'-0" OF CLEARANCE IS REQUIRED FOR VZW / EQUIPMENT ABOVE AND BELOW ALL PRIMARY ELECTRIFICATION.
 - 40" OF CLEARANCE IS REQUIRED FOR VZW / EQUIPMENT ABOVE AND BELOW ALL SECONDARY ELECTRIFICATION.
 - 12" OF CLEARANCE IS REQUIRED FOR VZW / EQUIPMENT ABOVE AND BELOW ALL TELECOMMUNICATION LINES.
 - 30" OF CLEARANCE IS REQUIRED FOR VZW / EQUIPMENT ABOVE ABOVE AND BELOW ALL NEUTRAL LINES.

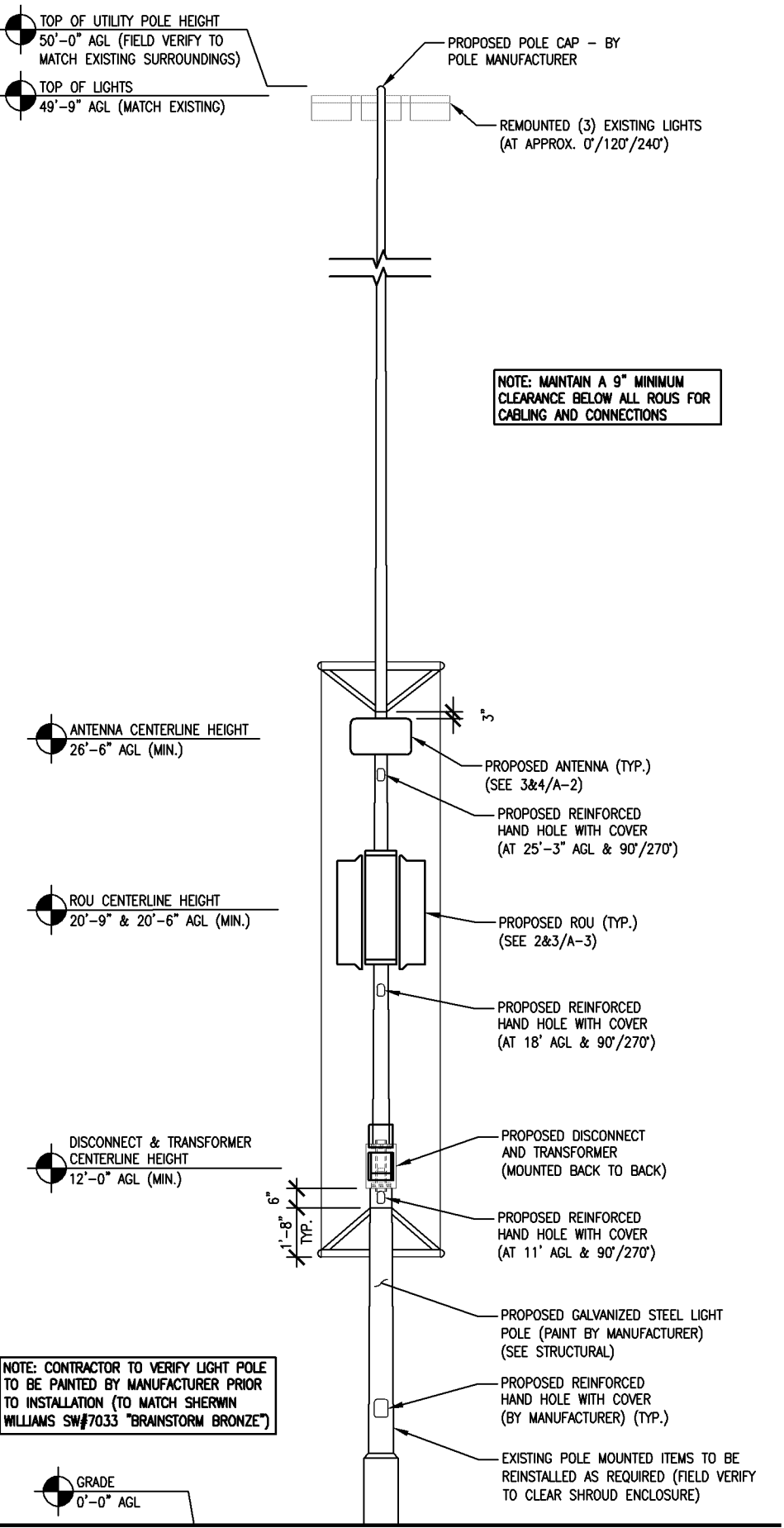
NOTE: FOR SHROUD ENCLOSURE DESIGN AND COORDINATION CONTACT PIERSON WIRELESS - TED COX (402)770-9039 AND STAR TRANET - CHRIS MASSMANN (763) 561-4655 6688 93RD AVE NORTH MINNEAPOLIS, MN 55445



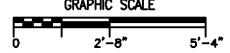
3 ANTENNA MOUNTING PLAN @ 25'-0" AGL
SCALE: 1/2" = 1'-0"



2 POLE ELEVATION WITH ENCLOSURE
SCALE: 3/16" = 1'-0"



1 WEST POLE ELEVATION
SCALE: 3/16" = 1'-0"



NOT FOR CONSTRUCTION

DESIGN 1
9973 VALLEY VIEW RD.
EDEN PRAIRIE, MN 55344
(952) 903-9299
WWW.DESIGN1EP.COM

verizon
10801 BUSH LAKE ROAD
BLOOMINGTON, MN 55438

MIN
MOA ODAS
EAST FLAT
LOT: EAST
8201 24TH AVENUE SOUTH
BLOOMINGTON, MN 55425

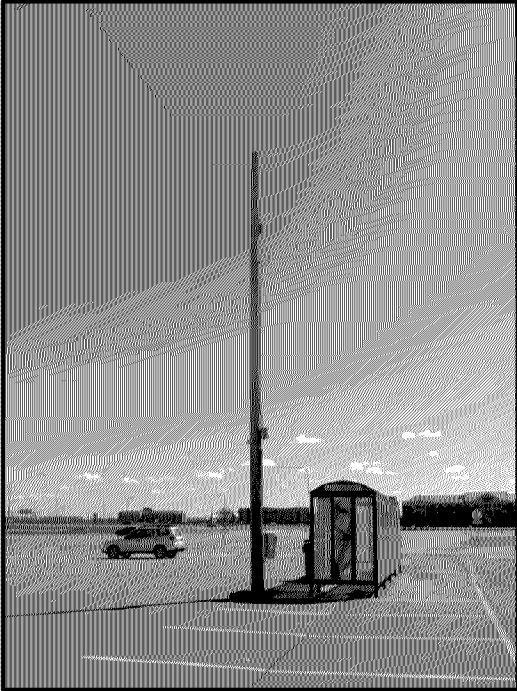
SHEET CONTENTS:
LIGHT POLE ELEVATIONS
ANTENNA PLANS

DRAWN BY: RMK
DATE: 08/28/17
CHECKED BY: TAB
REV. A 09/07/17



MIN MOA ODAS NORTH
FLAT LOT: CENTRAL

SITE PHOTO



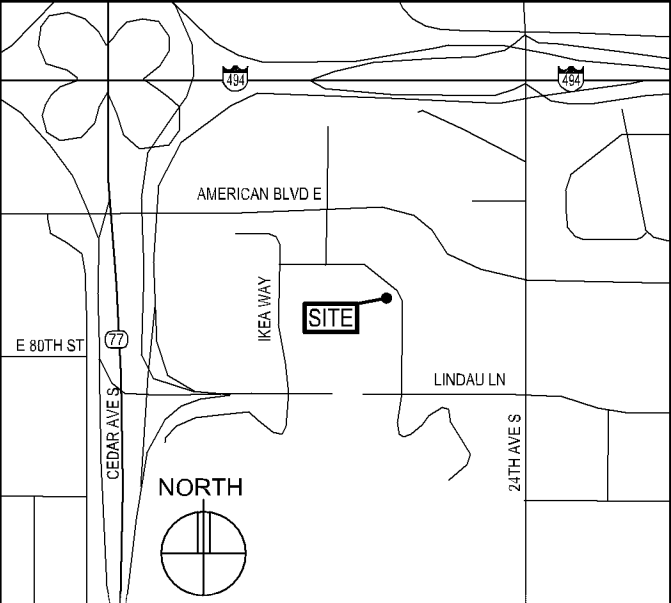
PROJECT DESCRIPTION

WORK ITEM	SUPPLIED BY
INSTALL (4) ANTENNAS	VZW
INSTALL (8) ROUS	VZW
INSTALL CABLING	GC
INSTALL (1) DISCONNECT BOX	GC
INSTALL (1) REPLACEMENT POLE	GC
INSTALL SHROUD ENCLOSURE	GC

GENERAL NOTES

- In the event that Special Inspections are not performed in compliance with the contract terms, bid specifications and/or specified form, the General Contractor will be liable for all damages, construction performance, failures, and corrective actions related to the same.
- The following general notes shall apply to drawings and govern unless otherwise noted or specified.
- The work delineated in these drawings and described in the specifications shall conform to codes, standards and regulations that have jurisdiction in the state of MN, and the city of BLOOMINGTON.
- Requirements and regulations pertaining to R.F. safety codes and practices must be incorporated in the work even though they may not be listed individually and separately in either the drawings or the specifications.
- Compare field conditions with architectural and engineering drawings. Any discrepancies shall be directed to the Architect for clarification prior to fabrication and/or construction. Submit necessary shop drawings prior to fabrication for approval by the Architect. No information or details on these sheets may be used without the permission of the owner, or the architect.
- Do not scale drawings! 11" x 17" drawings to scale 24" x 36" drawings scale multiply by 2.
- Unless otherwise shown or noted, typical details shall be used where applicable.
- Details shall be considered typical at similar conditions.
- Safety measures: The contractor shall be solely and completely responsible for the conditions of the job site, including safety of the persons and property and for independent engineering reviews of these conditions. The Architect's or Engineers' job site review is not intended to include review of the adequacy of the contractor's safety measures.
- Within these plans and specifications, "Owner" implies VERIZON WIRELESS.
- The work is the responsibility of the general contractor unless noted otherwise.
- The terms "contractor" and "g.c." refer to the owner's general contractor and the general contractor's sub-contractors. It is the general contractor's responsibility to determine the division of work among sub-contractors.
- The general contractor is responsible in obtaining necessary public and private underground utility locate services prior to start of excavating / construction.

VICINITY MAP



LOCATION SCAN



SHEET INDEX

SHEET	SHEET DESCRIPTION
T-1	PROJECT INFORMATION, MAPS, DIRECTIONS, & SHEET INDEX
T-2	AERIAL PHOTO & NODE LOCATIONS
A-1	SITE PLAN & PHOTOS
A-2	ANTENNA PLAN, SPECS, ANTENNA MOUNT DETAILS, & POLE ELEVATIONS
A-3	ROU DETAILS & ROU MOUNT DETAILS
A-4	SPECIFICATIONS & RF STICKERS
G-1	GROUNDING PLAN, ELEVATION, & DETAILS

ISSUE SUMMARY

REV	DESCRIPTION	SHEET OR DETAIL
A	ISSUED FOR REVIEW 09/07/17	ALL

CONTACTS

LESSOR:	MALL OF AMERICA 60 E. BROADWAY BLOOMINGTON, MN 55425 CPM: ERIC ATKINS (952) 883-8508 EMAIL: ERIC.ATKINS@MOA.NET
LESSEE:	VERIZON WIRELESS 10801 BUSH LAKE ROAD BLOOMINGTON, MN 55438 KATIE POSER (612) 968-6077
ARCHITECT:	DESIGN 1 ARCHITECTS LLC 9973 VALLEY VIEW ROAD EDEN PRAIRIE, MN 55344 (952) 903-9299

PROJECT INFORMATION

SITE NAME:	MIN MOA ODAS NORTH FLAT LOT: CENTRAL
SITE ADDRESS:	8000 24TH AVENUE SOUTH BLOOMINGTON, MN 55425
COUNTY:	HENNEPIN
LATITUDE:	N 44° 51' 29.97"
LONGITUDE:	W 93° 14' 27.34"
GROUND ELEVATION:	829' AMSL
ANTENNA TIP HEIGHT:	27'-2.25" AGL AND 24'11.25"
ANTENNA CENTERLINE HEIGHT:	26'-6" AGL AND 24'-3" AGL
STRUCTURE HEIGHT:	SEE A-2

VERIZON WIRELESS
DEPARTMENTAL APPROVALS

JOB TITLE	NAME	DATE
RF ENGINEER		
CONSTRUCTION ENGINEER		
EQUIPMENT ENGINEER		

LESSOR / LICENSOR APPROVAL

SIGNATURE	PRINTED NAME	DATE
LESSOR / LICENSOR: PLEASE CHECK THE APPROPRIATE BOX BELOW		
<input type="checkbox"/> NO CHANGES.	<input type="checkbox"/> CHANGES NEEDED. SEE COMMENTS.	

NOT FOR
CONSTRUCTION

DESIGN 1

9973 VALLEY VIEW RD.
EDEN PRAIRIE, MN 55344
(952) 903-9299
WWW.DESIGN1EP.COM

verizon

10801 BUSH LAKE ROAD
BLOOMINGTON, MN 55438

MIN
MOA ODAS
NORTH FLAT
LOT: CENTRAL

8000 24TH AVENUE SOUTH
BLOOMINGTON, MN 55425

SHEET CONTENTS:
CONTACTS
ISSUE SUMMARY
SHEET INDEX
DEPARTMENTAL APPROVALS
LESSOR APPROVAL
PROJECT INFORMATION
VICINITY MAP
GENERAL NOTES

DRAWN BY: RMK
DATE: 08/23/17
CHECKED BY: TAB
REV. A 09/07/17

T-1



1 AERIAL PHOTO - NODE LOCATIONS
SCALE: N.T.S.



NOT FOR
CONSTRUCTION

DESIGN1

9973 VALLEY VIEW RD.
EDEN PRAIRIE, MN 55344
(952) 903-9299
WWW.DESIGN1EP.COM

verizon

10801 BUSH LAKE ROAD
BLOOMINGTON, MN 55438

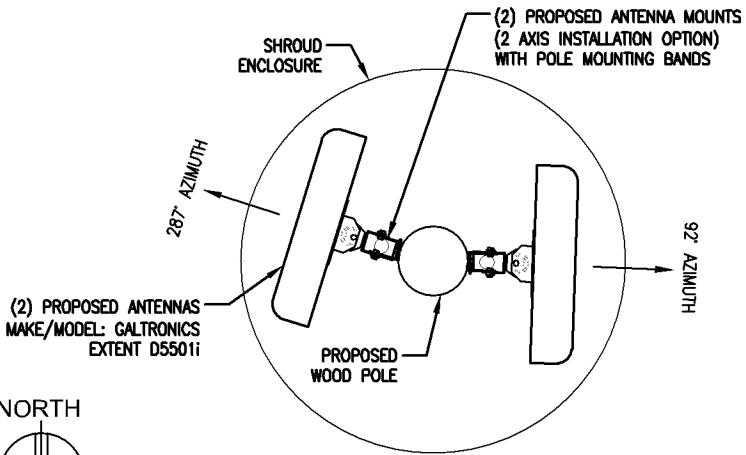
MIN
MOA ODAS
NORTH FLAT
LOT: CENTRAL

8000 24TH AVENUE SOUTH
BLOOMINGTON, MN 55425

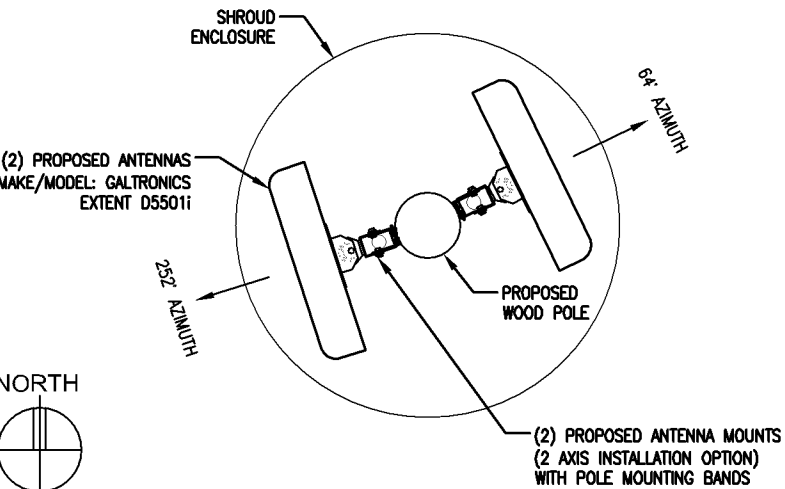
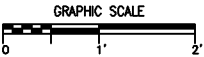
SHEET CONTENTS:
AERIAL PHOTO WITH
NODE LOCATIONS

DRAWN BY:	RMK
DATE:	08/23/17
CHECKED BY:	TAB
REV. A	09/07/17

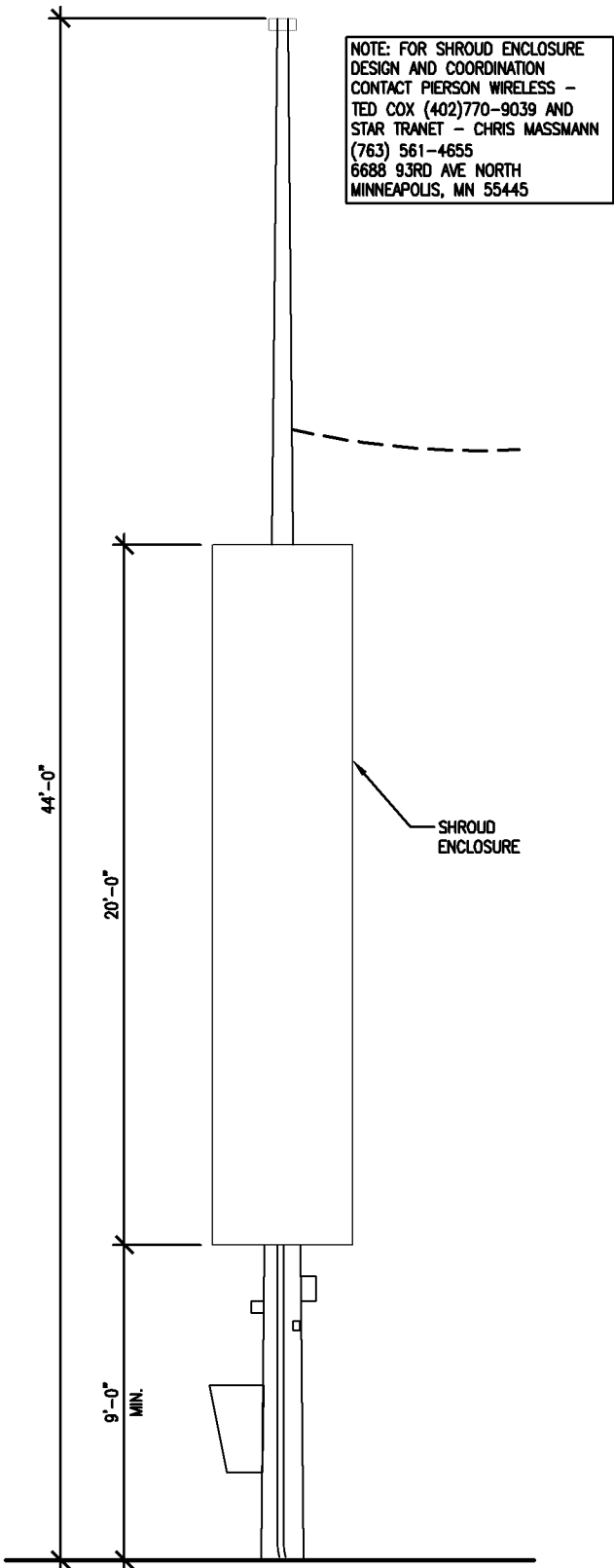
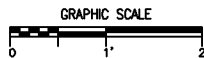
- NOTE:
- 10'-0" OF CLEARANCE IS REQUIRED FOR VZW / EQUIPMENT ABOVE AND BELOW ALL PRIMARY ELECTRIFICATION.
 - 40" OF CLEARANCE IS REQUIRED FOR VZW / EQUIPMENT ABOVE AND BELOW ALL SECONDARY ELECTRIFICATION.
 - 12" OF CLEARANCE IS REQUIRED FOR VZW / EQUIPMENT ABOVE AND BELOW ALL TELECOMMUNICATION LINES.
 - 30" OF CLEARANCE IS REQUIRED FOR VZW / EQUIPMENT ABOVE ABOVE AND BELOW ALL NEUTRAL LINES.



4 ANTENNA MOUNTING PLAN @ 24'-3" AGL
SCALE: 1/2" = 1'-0"



3 ANTENNA MOUNTING PLAN @ 26'-6" AGL
SCALE: 1/2" = 1'-0"



2 POLE ELEVATION WITH ENCLOSURE
SCALE: 3/16" = 1'-0"

TOP OF UTILITY POLE HEIGHT
44'-0" AGL (FIELD VERIFY TO
MATCH EXISTING CONDITIONS)

ANTENNA CENTERLINE HEIGHT
26'-6" AGL (MIN.)

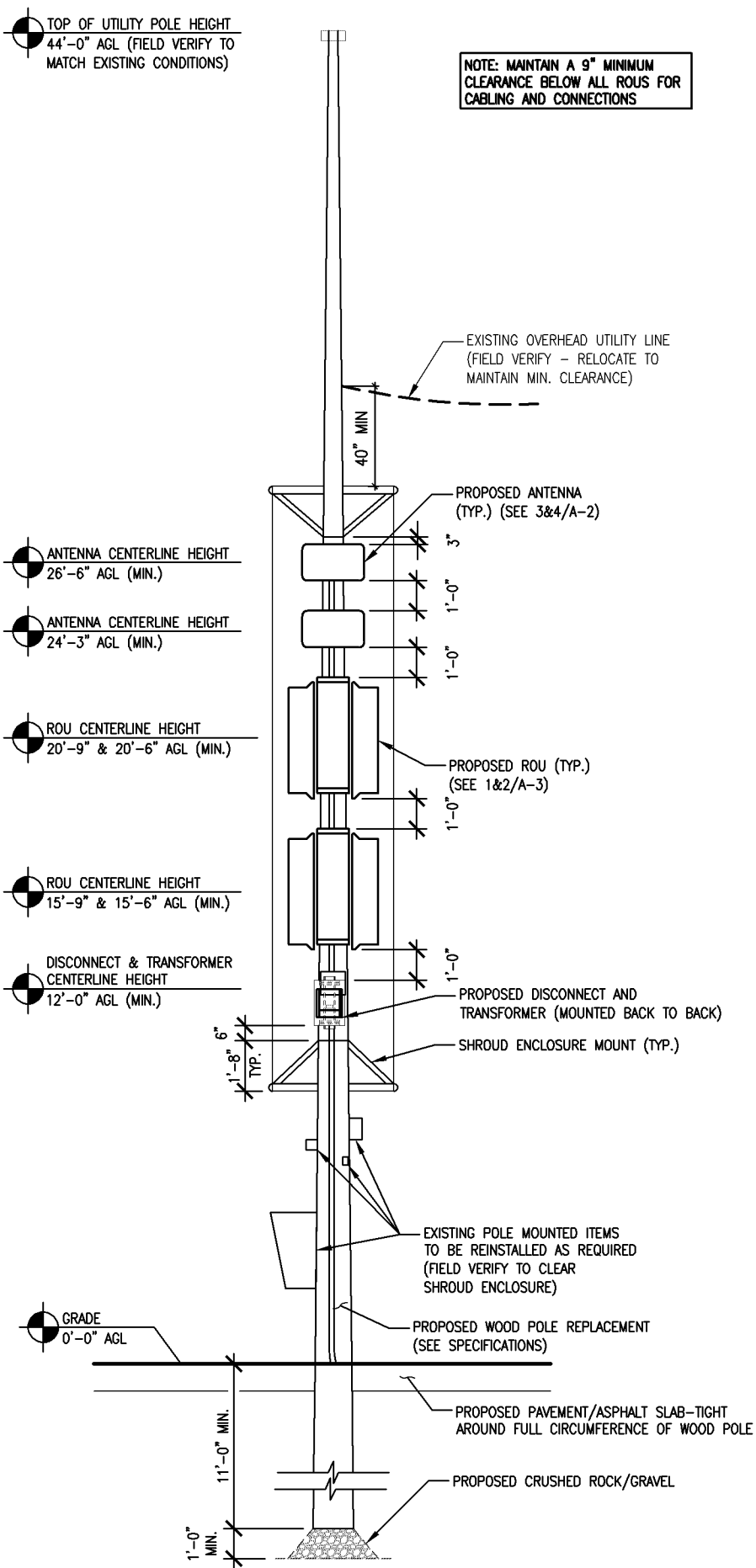
ANTENNA CENTERLINE HEIGHT
24'-3" AGL (MIN.)

ROU CENTERLINE HEIGHT
20'-9" & 20'-6" AGL (MIN.)

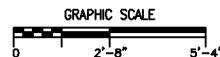
ROU CENTERLINE HEIGHT
15'-9" & 15'-6" AGL (MIN.)

DISCONNECT & TRANSFORMER
CENTERLINE HEIGHT
12'-0" AGL (MIN.)

GRADE
0'-0" AGL



1 WEST POLE ELEVATION
SCALE: 3/16" = 1'-0"



NOT FOR
CONSTRUCTION

DESIGN 1
9973 VALLEY VIEW RD.
EDEN PRAIRIE, MN 55344
(952) 903-9299
WWW.DESIGN1EP.COM

verizon
10801 BUSH LAKE ROAD
BLOOMINGTON, MN 55438

MIN
MOA ODAS
NORTH FLAT
LOT: CENTRAL
8000 24TH AVENUE SOUTH
BLOOMINGTON, MN 55425

SHEET CONTENTS:
LIGHT POLE ELEVATIONS
ANTENNA PLANS

DRAWN BY: RMK
DATE: 08/23/17
CHECKED BY: TAB
REV. A 09/07/17



MIN MOA ODAS NORTH
FLAT LOT: WEST

SITE PHOTO



PROJECT DESCRIPTION

WORK ITEM	SUPPLIED BY
INSTALL (1) ANTENNAS	VZW
INSTALL (4) ROUS	VZW
INSTALL CABLING	GC
INSTALL (1) DISCONNECT BOX	GC
INSTALL (1) REPLACEMENT POLE	GC
INSTALL SHROUD ENCLOSURE	GC

GENERAL NOTES

- In the event that Special Inspections are not performed in compliance with the contract terms, bid specifications and/or specified form, the General Contractor will be liable for all damages, construction performance, failures, and corrective actions related to the same.
- The following general notes shall apply to drawings and govern unless otherwise noted or specified.
- The work delineated in these drawings and described in the specifications shall conform to codes, standards and regulations that have jurisdiction in the state of MN, and the city of BLOOMINGTON.
- Requirements and regulations pertaining to R.F. safety codes and practices must be incorporated in the work even though they may not be listed individually and separately in either the drawings or the specifications.
- Compare field conditions with architectural and engineering drawings. Any discrepancies shall be directed to the Architect for clarification prior to fabrication and/or construction. Submit necessary shop drawings prior to fabrication for approval by the Architect. No information or details on these sheets may be used without the permission of the owner, or the architect.
- Do not scale drawings! 11" x 17" drawings to scale 24" x 36" drawings scale multiply by 2.
- Unless otherwise shown or noted, typical details shall be used where applicable.
- Details shall be considered typical at similar conditions.
- Safety measures: The contractor shall be solely and completely responsible for the conditions of the job site, including safety of the persons and property and for independent engineering reviews of these conditions. The Architect's or Engineers' job site review is not intended to include review of the adequacy of the contractor's safety measures.
- Within these plans and specifications, "Owner" implies VERIZON WIRELESS.
- The work is the responsibility of the general contractor unless noted otherwise.
- The terms "contractor" and "g.c." refer to the owner's general contractor and the general contractor's sub-contractors. It is the general contractor's responsibility to determine the division of work among sub-contractors.
- The general contractor is responsible in obtaining necessary public and private underground utility locate services prior to start of excavating / construction.

VICINITY MAP



LOCATION SCAN



PROJECT INFORMATION

SITE NAME:	MIN MOA ODAS NORTH FLAT LOT: WEST
SITE ADDRESS:	8000 24TH AVENUE SOUTH BLOOMINGTON, MN 55425
COUNTY:	HENNEPIN
LATITUDE:	N 44° 51' 31.74"
LONGITUDE:	W 93° 14' 35.01"
GROUND ELEVATION:	829' AMSL
ANTENNA TIP HEIGHT:	27'-2.25" AGL
ANTENNA CENTERLINE HEIGHT:	26'-6" AGL
STRUCTURE HEIGHT:	SEE A-2

SHEET INDEX

SHEET	SHEET DESCRIPTION
T-1	PROJECT INFORMATION, MAPS, DIRECTIONS, & SHEET INDEX
T-2	AERIAL PHOTO & NODE LOCATIONS
A-1	SITE PLAN & PHOTOS
A-2	ANTENNA PLAN, SPECS, ANTENNA MOUNT DETAILS, & POLE ELEVATIONS
A-3	ROU DETAILS & ROU MOUNT DETAILS
A-4	SPECIFICATIONS & RF STICKERS
G-1	GROUNDING PLAN, ELEVATION, & DETAILS

ISSUE SUMMARY

REV	DESCRIPTION	SHEET OR DETAIL
A	ISSUED FOR REVIEW 09/07/17	ALL

CONTACTS

LESSOR:	MALL OF AMERICA 60 E. BROADWAY BLOOMINGTON, MN 55425 CPM: ERIC ATKINS (952) 883-8508 EMAIL: ERIC.ATKINS@MOA.NET
LESSEE:	VERIZON WIRELESS 10801 BUSH LAKE ROAD BLOOMINGTON, MN 55438 KATIE POSER (612) 968-6077
ARCHITECT:	DESIGN 1 ARCHITECTS LLC 9973 VALLEY VIEW ROAD EDEN PRAIRIE, MN 55344 (952) 903-9299

VERIZON WIRELESS
DEPARTMENTAL APPROVALS

JOB TITLE	NAME	DATE
RF ENGINEER		
CONSTRUCTION ENGINEER		
EQUIPMENT ENGINEER		

LESSOR / LICENSOR APPROVAL

SIGNATURE	PRINTED NAME	DATE
LESSOR / LICENSOR: PLEASE CHECK THE APPROPRIATE BOX BELOW		
<input type="checkbox"/> NO CHANGES.	<input type="checkbox"/> CHANGES NEEDED. SEE COMMENTS.	

NOT FOR
CONSTRUCTION

DESIGN 1

9973 VALLEY VIEW RD.
EDEN PRAIRIE, MN 55344
(952) 903-9299
WWW.DESIGN1EP.COM

verizon

10801 BUSH LAKE ROAD
BLOOMINGTON, MN 55438

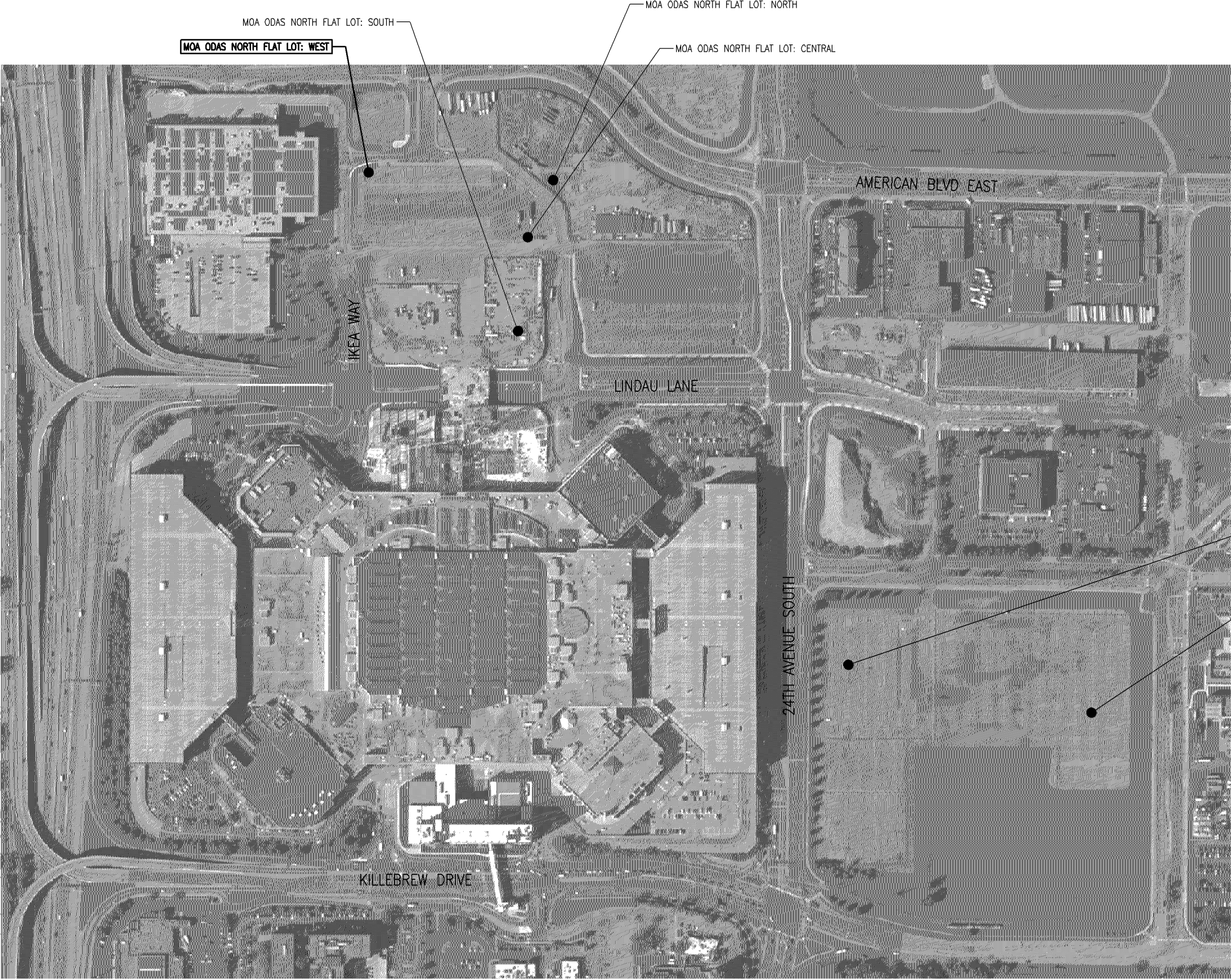
MIN
MOA ODAS
NORTH FLAT
LOT: WEST

8000 24TH AVENUE SOUTH
BLOOMINGTON, MN 55425

SHEET CONTENTS:
CONTACTS
ISSUE SUMMARY
SHEET INDEX
DEPARTMENTAL APPROVALS
LESSOR APPROVAL
PROJECT INFORMATION
VICINITY MAP
GENERAL NOTES

DRAWN BY: RMK
DATE: 08/23/17
CHECKED BY: TAB
REV. A 09/07/17

T-1



NOT FOR
CONSTRUCTION

DESIGN1

9873 VALLEY VIEW RD.
EDEN PRAIRIE, MN 55344
(952) 903-9299
WWW.DESIGN1EP.COM

verizon

10801 BUSH LAKE ROAD
BLOOMINGTON, MN 55438

MIN
MOA ODAS
NORTH FLAT
LOT: WEST

8000 24TH AVENUE SOUTH
BLOOMINGTON, MN 55425

SHEET CONTENTS:
AERIAL PHOTO WITH NODE
LOCATIONS

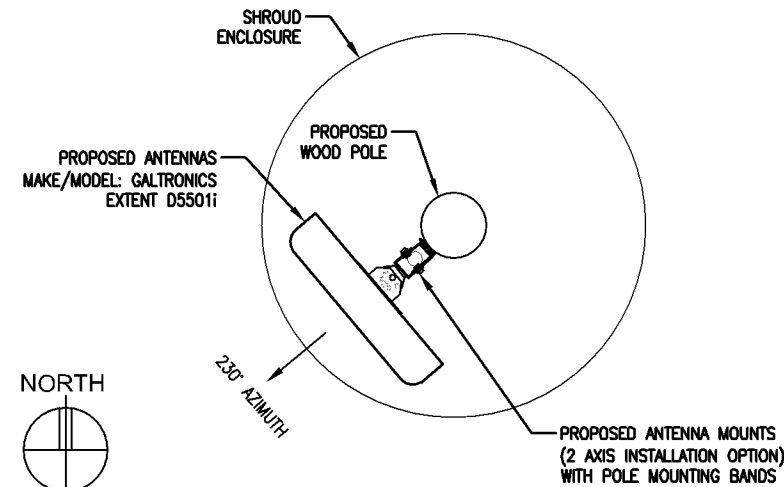
DRAWN BY:	RMK
DATE:	08/23/17
CHECKED BY:	TAB
REV. A	09/07/17

1 AERIAL PHOTO - NODE LOCATIONS
SCALE: N.T.S.

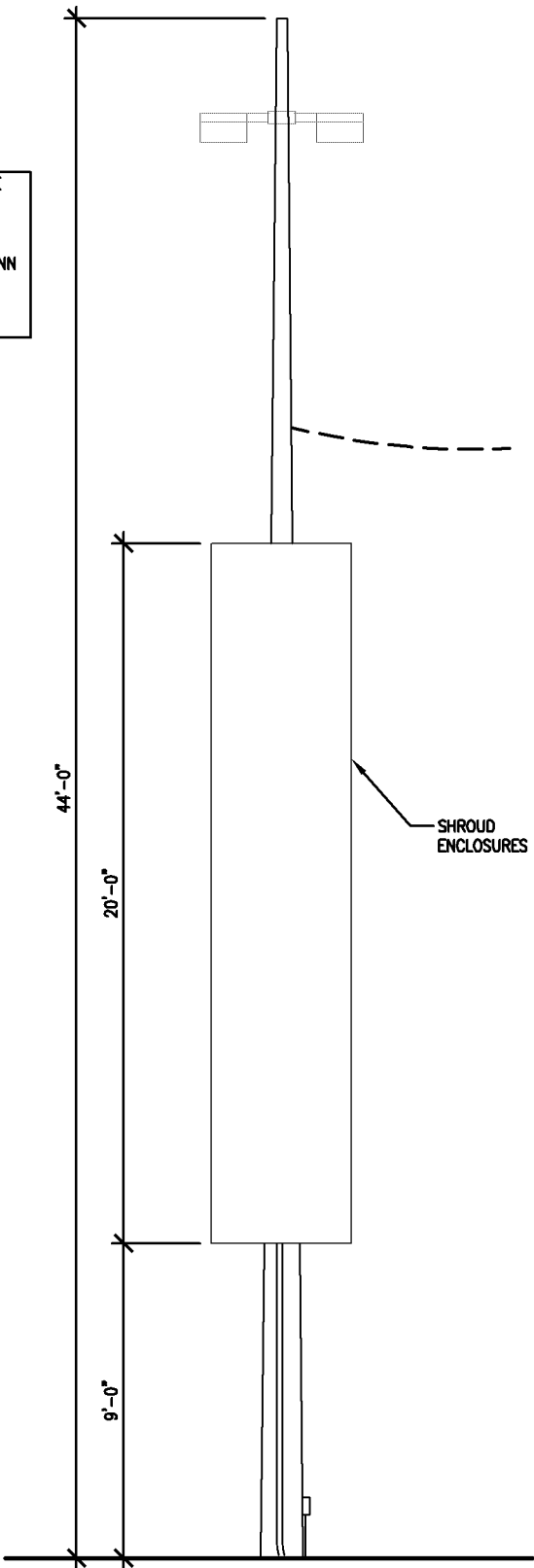
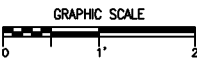


- NOTE:
- 10'-0" OF CLEARANCE IS REQUIRED FOR VZW / EQUIPMENT ABOVE AND BELOW ALL PRIMARY ELECTRIFICATION.
 - 40" OF CLEARANCE IS REQUIRED FOR VZW / EQUIPMENT ABOVE AND BELOW ALL SECONDARY ELECTRIFICATION.
 - 12" OF CLEARANCE IS REQUIRED FOR VZW / EQUIPMENT ABOVE AND BELOW ALL TELECOMMUNICATION LINES.
 - 30" OF CLEARANCE IS REQUIRED FOR VZW / EQUIPMENT ABOVE ABOVE AND BELOW ALL NEUTRAL LINES.

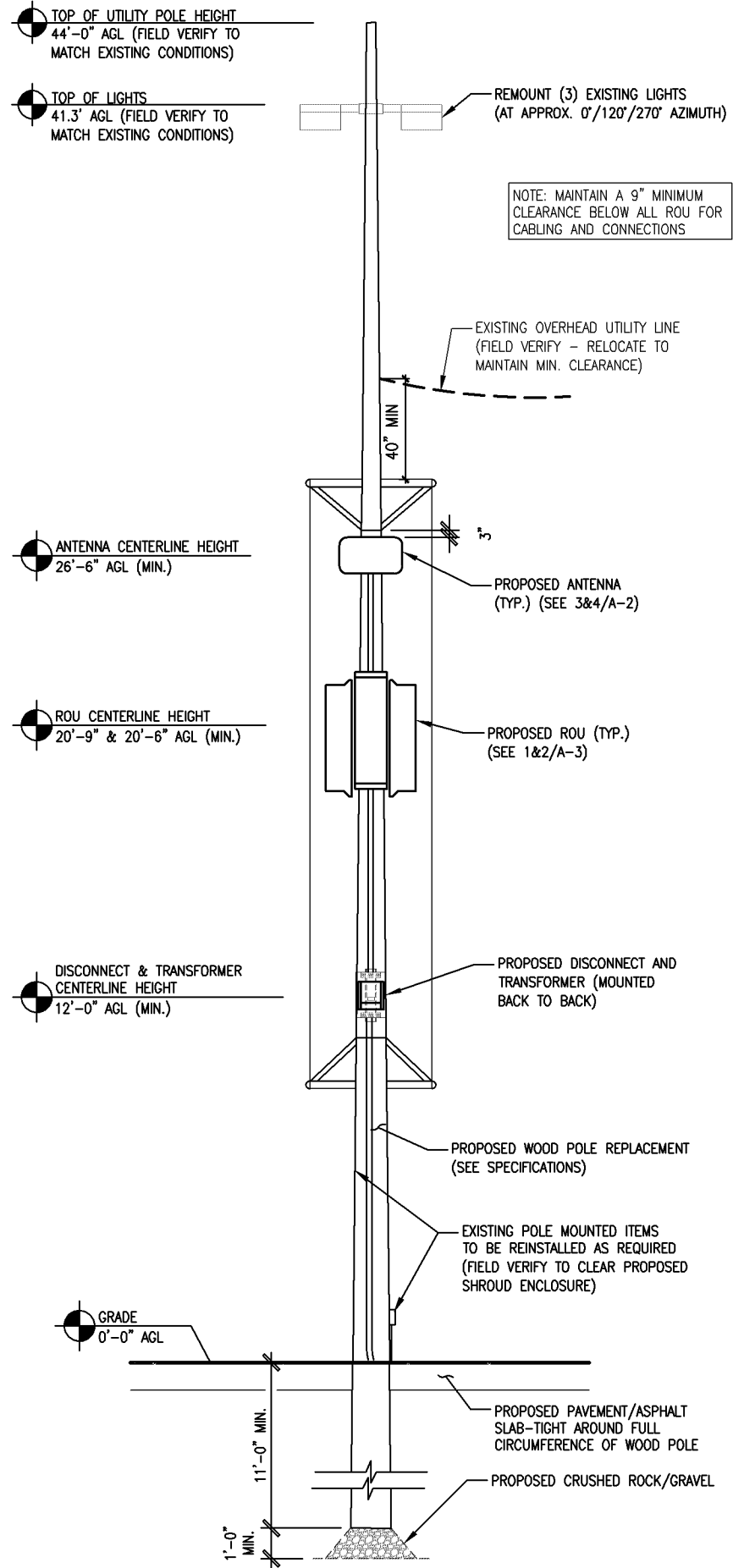
NOTE: FOR SHROUD ENCLOSURE DESIGN AND COORDINATION CONTACT PIERSON WIRELESS - TED COX (402)770-9039 AND STAR TRANET - CHRIS MASSMANN (763) 561-4655 6688 93RD AVE NORTH MINNEAPOLIS, MN 55445



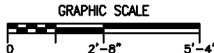
3 ANTENNA MOUNTING PLAN @ 26'-6" AGL
SCALE: 1/2" = 1'-0"



2 POLE ELEVATION WITH ENCLOSURE
SCALE: 3/16" = 1'-0"



1 WEST POLE ELEVATION
SCALE: 3/16" = 1'-0"



NOT FOR CONSTRUCTION

DESIGN 1
9973 VALLEY VIEW RD.
EDEN PRAIRIE, MN 55344
(952) 903-9299
WWW.DESIGN1EP.COM

verizon
10801 BUSH LAKE ROAD
BLOOMINGTON, MN 55438

MIN
MOA ODAS
NORTH FLAT
LOT: WEST

8000 24TH AVENUE SOUTH
BLOOMINGTON, MN 55425

SHEET CONTENTS:
LIGHT POLE ELEVATIONS
ANTENNA PLANS

DRAWN BY: RMK
DATE: 08/23/17
CHECKED BY: TAB
REV. A 09/07/17