

**APPROVED
ZONING REVIEW ONLY
NMJ 01/24/2018**



NOT FOR
CONSTRUCTION

DESIGN 1

9973 VALLEY VIEW RD.
EDEN PRAIRIE, MN 55344
(952) 903-9299
WWW.DESIGN1EP.COM

verizon

10801 BUSH LAKE ROAD
BLOOMINGTON, MN 55438

MOA ODAS EAST
FLAT LOT: WEST

MOA ODAS EAST
FLAT LOT: EAST

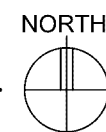
MIN
MOA ODAS
EAST FLAT
LOT: EAST

8201 24TH AVENUE SOUTH
BLOOMINGTON, MN 55425

SHEET CONTENTS:
AERIAL PHOTO WITH
NODE LOCATIONS

| | |
|-------------|----------|
| DRAWN BY: | RMK |
| DATE: | 08/28/17 |
| CHECKED BY: | TAB |
| REV. A | 09/07/17 |

1 AERIAL PHOTO - NODE LOCATIONS
SCALE: N.T.S.

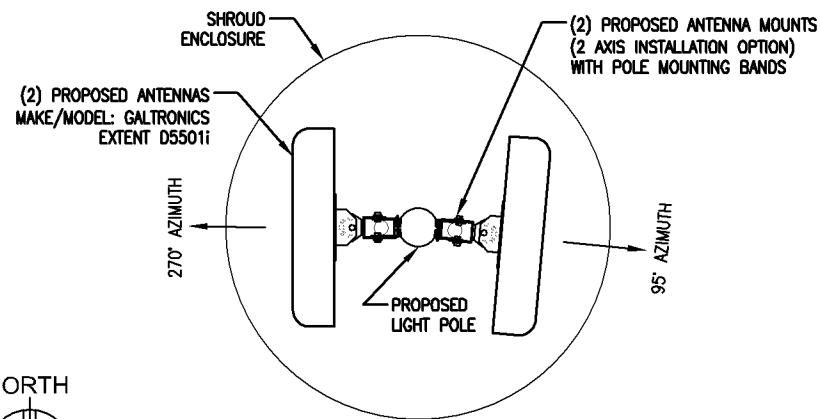


T-2

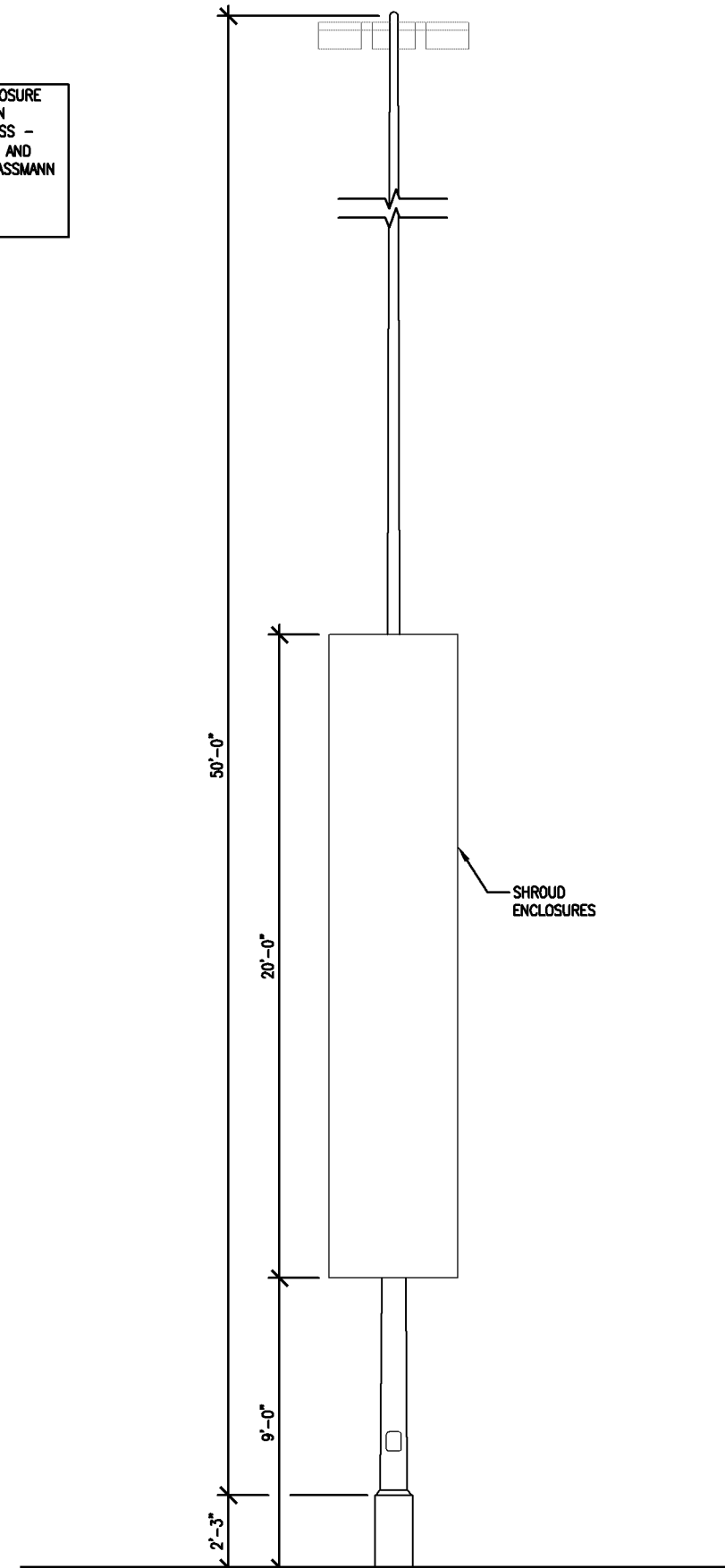
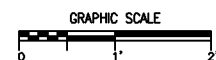
- NOTE:**
- 10'-0" OF CLEARANCE IS REQUIRED FOR VZW / EQUIPMENT ABOVE AND BELOW ALL PRIMARY ELECTRIFICATION.
 - 40" OF CLEARANCE IS REQUIRED FOR VZW / EQUIPMENT ABOVE AND BELOW ALL SECONDARY ELECTRIFICATION.
 - 12" OF CLEARANCE IS REQUIRED FOR VZW / EQUIPMENT ABOVE AND BELOW ALL TELECOMMUNICATION LINES.
 - 30" OF CLEARANCE IS REQUIRED FOR VZW / EQUIPMENT ABOVE ABOVE AND BELOW ALL NEUTRAL LINES.

NOTE: FOR SHROUD ENCLOSURE DESIGN AND COORDINATION CONTACT PIERSON WIRELESS - TED COX (402)770-9039 AND STAR TRANET - CHRIS MASSMANN (763) 561-4655 6688 93RD AVE NORTH MINNEAPOLIS, MN 55445

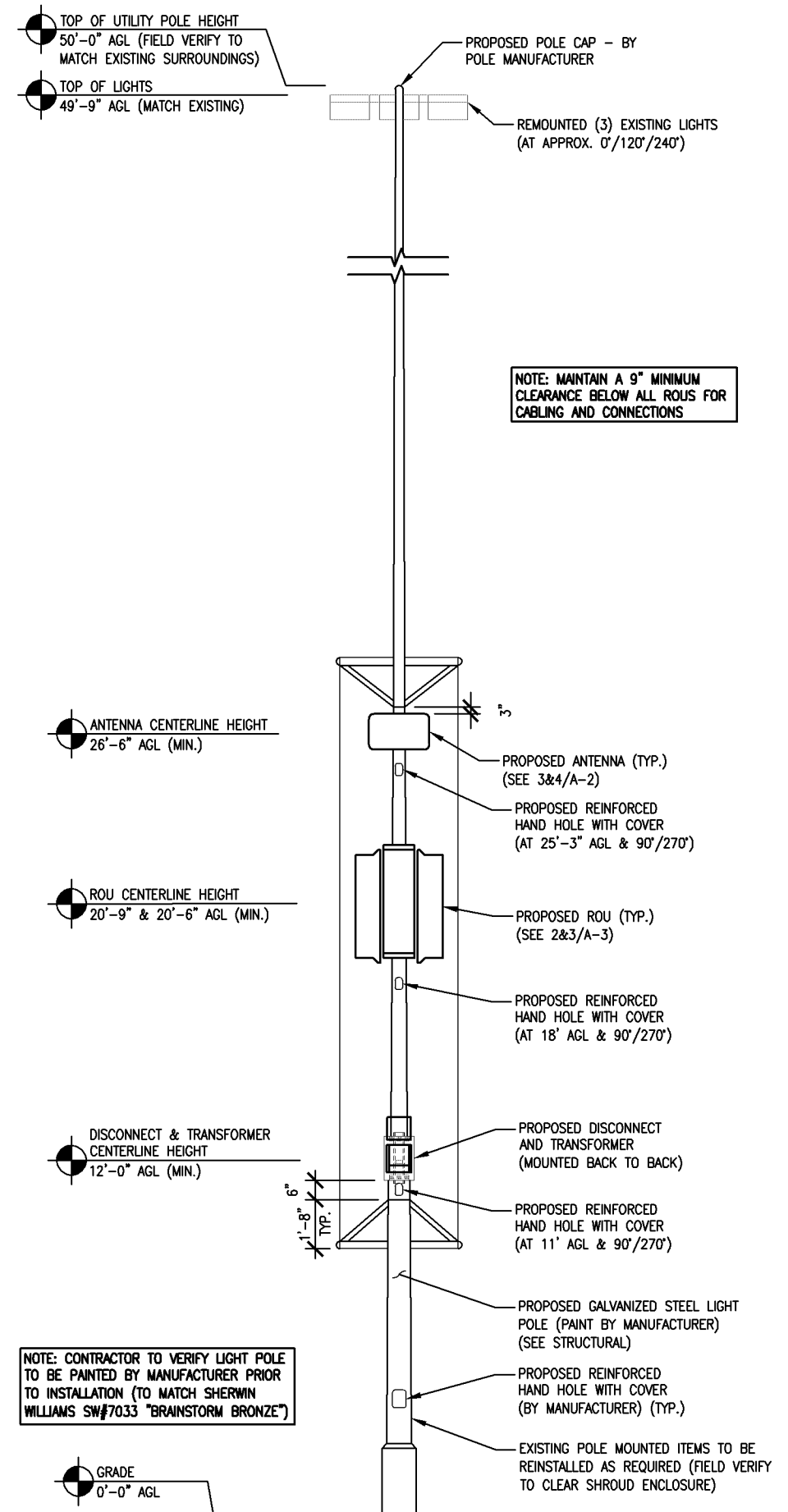
**APPROVED
ZONING REVIEW ONLY
NMJ 01/24/2018**



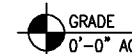
3 ANTENNA MOUNTING PLAN @ 25'-0" AGL
SCALE: 1/2" = 1'-0"



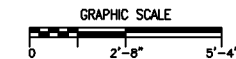
2 POLE ELEVATION WITH ENCLOSURE
SCALE: 3/16" = 1'-0"



NOTE: CONTRACTOR TO VERIFY LIGHT POLE TO BE PAINTED BY MANUFACTURER PRIOR TO INSTALLATION (TO MATCH SHERWIN WILLIAMS SW#7033 "BRAINSTORM BRONZE")



1 WEST POLE ELEVATION
SCALE: 3/16" = 1'-0"



NOTE: MAINTAIN A 9" MINIMUM CLEARANCE BELOW ALL ROUS FOR CABLING AND CONNECTIONS

NOT FOR CONSTRUCTION

DESIGN 1

9973 VALLEY VIEW RD.
EDEN PRAIRIE, MN 55344
(952) 903-9299
WWW.DESIGN1EP.COM

verizon

10801 BUSH LAKE ROAD
BLOOMINGTON, MN 55438

MIN
MOA ODAS
EAST FLAT
LOT: EAST

8201 24TH AVENUE SOUTH
BLOOMINGTON, MN 55425

SHEET CONTENTS:
LIGHT POLE ELEVATIONS
ANTENNA PLANS

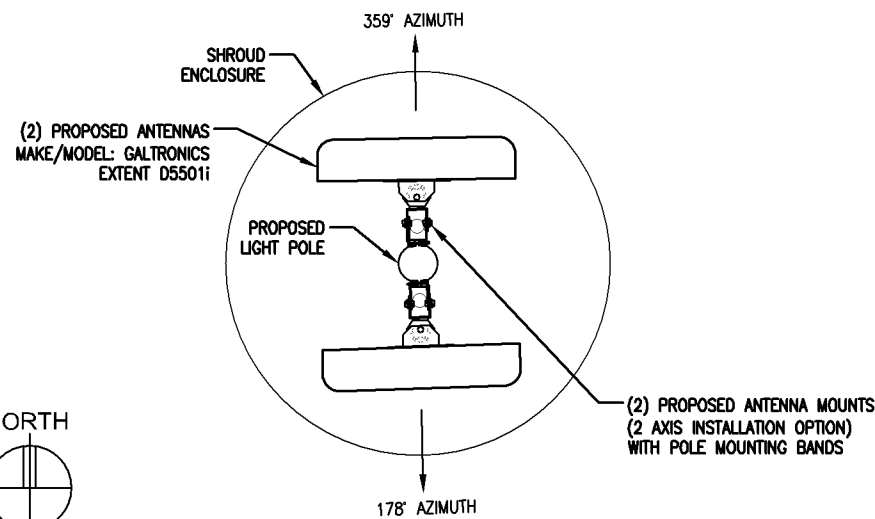
| | |
|-------------|----------|
| DRAWN BY: | RMK |
| DATE: | 08/28/17 |
| CHECKED BY: | TAB |
| REV. A | 09/07/17 |

A-2

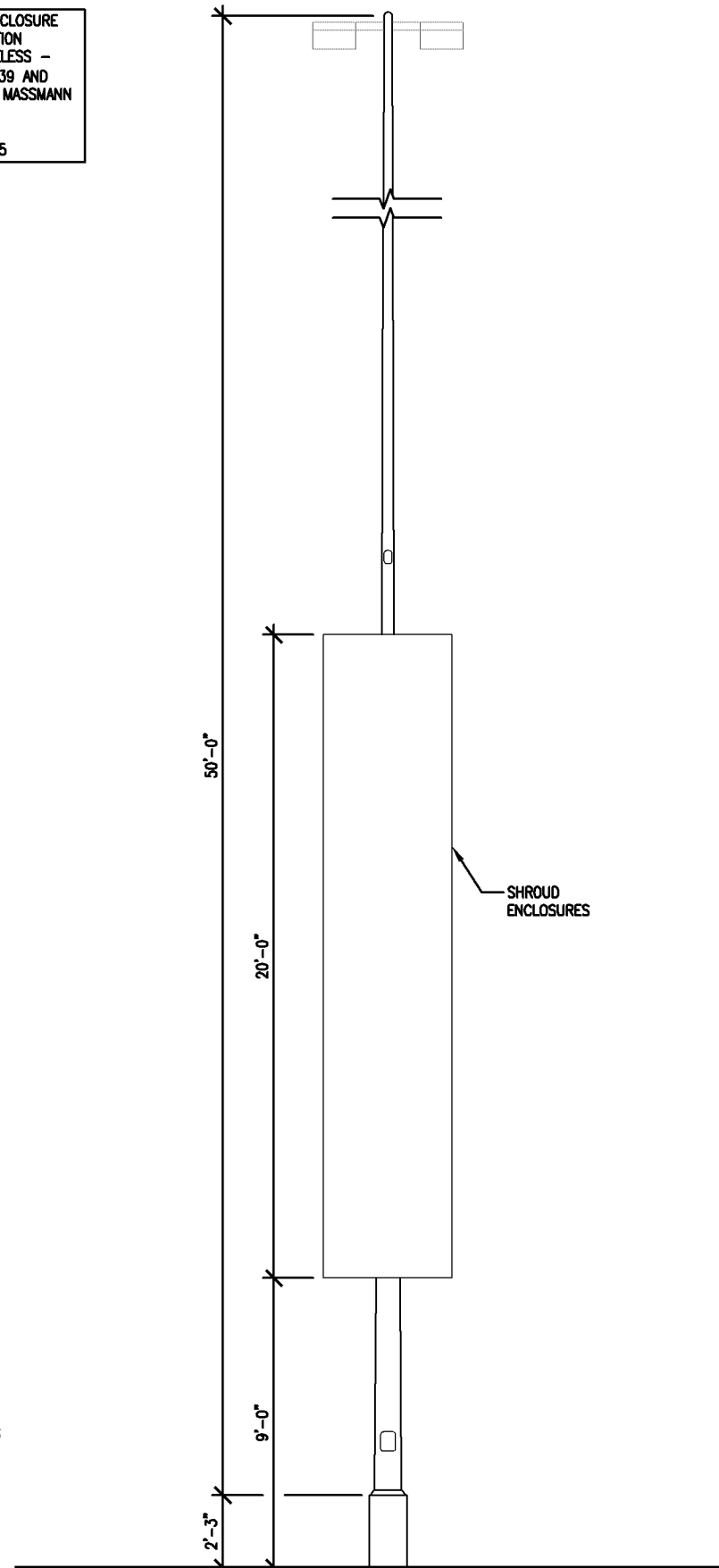
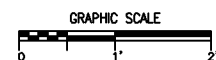
- NOTE:**
- 10'-0" OF CLEARANCE IS REQUIRED FOR VZW / EQUIPMENT ABOVE AND BELOW ALL PRIMARY ELECTRIFICATION.
 - 40" OF CLEARANCE IS REQUIRED FOR VZW / EQUIPMENT ABOVE AND BELOW ALL SECONDARY ELECTRIFICATION.
 - 12" OF CLEARANCE IS REQUIRED FOR VZW / EQUIPMENT ABOVE AND BELOW ALL TELECOMMUNICATION LINES.
 - 30" OF CLEARANCE IS REQUIRED FOR VZW / EQUIPMENT ABOVE ABOVE AND BELOW ALL NEUTRAL LINES.

NOTE: FOR SHROUD ENCLOSURE DESIGN AND COORDINATION CONTACT PIERSON WIRELESS - TED COX (402)770-9039 AND STAR TRANET - CHRIS MASSMANN (763) 561-4655 6688 93RD AVE NORTH MINNEAPOLIS, MN 55445

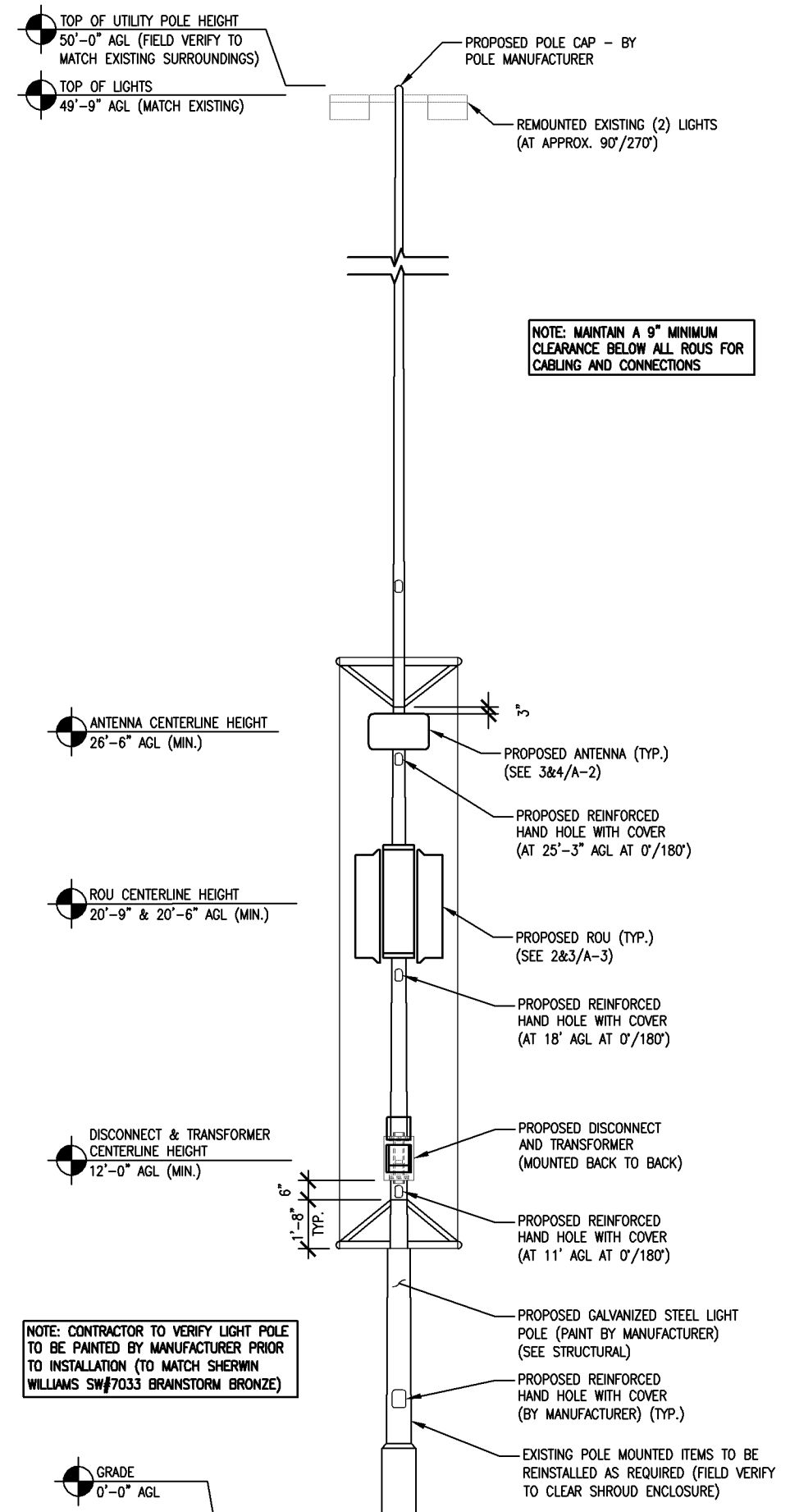
**APPROVED
ZONING REVIEW ONLY
NMJ 01/24/2018**



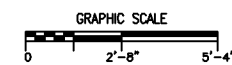
3 ANTENNA MOUNTING PLAN @ 26'-6" AGL
SCALE: 1/2" = 1'-0"



2 POLE ELEVATION WITH ENCLOSURE
SCALE: 3/16" = 1'-0"



1 NORTH POLE ELEVATION
SCALE: 3/16" = 1'-0"



NOT FOR CONSTRUCTION

DESIGN 1

9973 VALLEY VIEW RD.
EDEN PRAIRIE, MN 55344
(952) 903-9299
WWW.DESIGN1EP.COM

verizon

10801 BUSH LAKE ROAD
BLOOMINGTON, MN 55438

MIN
MOA ODAS
EAST FLAT
LOT: WEST

8201 24TH AVENUE SOUTH
BLOOMINGTON, MN 55425

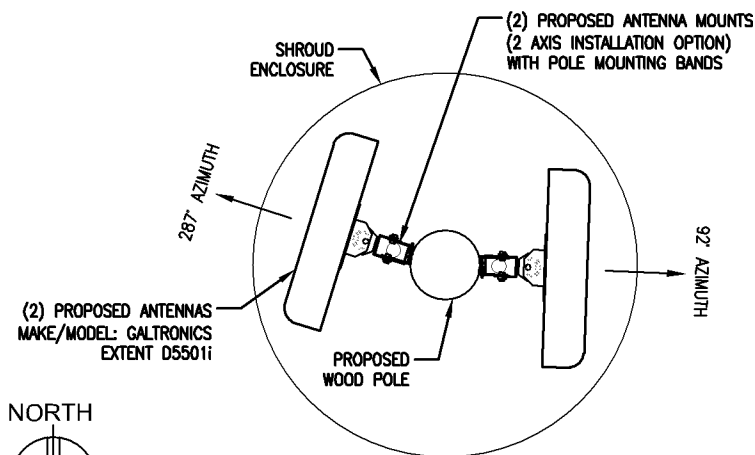
SHEET CONTENTS:
LIGHT POLE ELEVATIONS
ANTENNA PLANS

| | |
|-------------|----------|
| DRAWN BY: | RMK |
| DATE: | 08/28/17 |
| CHECKED BY: | TAB |
| REV. A | 09/07/17 |

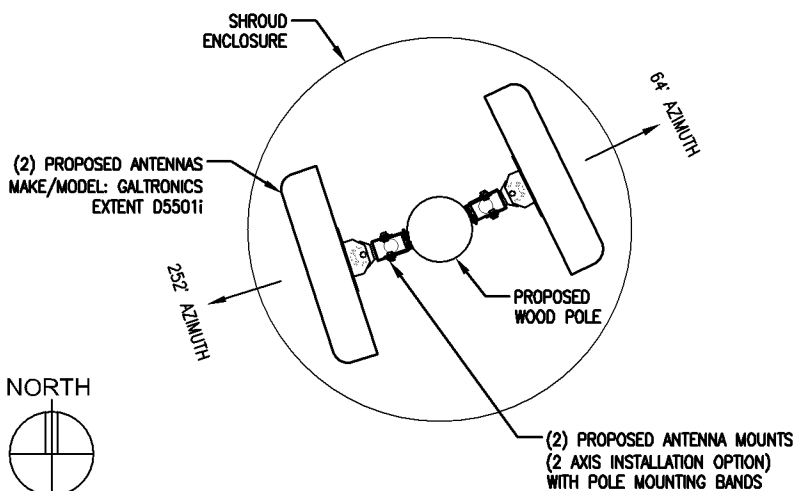
A-2

- NOTE:**
- 10'-0" OF CLEARANCE IS REQUIRED FOR VZW / EQUIPMENT ABOVE AND BELOW ALL PRIMARY ELECTRIFICATION.
 - 40" OF CLEARANCE IS REQUIRED FOR VZW / EQUIPMENT ABOVE AND BELOW ALL SECONDARY ELECTRIFICATION.
 - 12" OF CLEARANCE IS REQUIRED FOR VZW / EQUIPMENT ABOVE AND BELOW ALL TELECOMMUNICATION LINES.
 - 30" OF CLEARANCE IS REQUIRED FOR VZW / EQUIPMENT ABOVE ABOVE AND BELOW ALL NEUTRAL LINES.

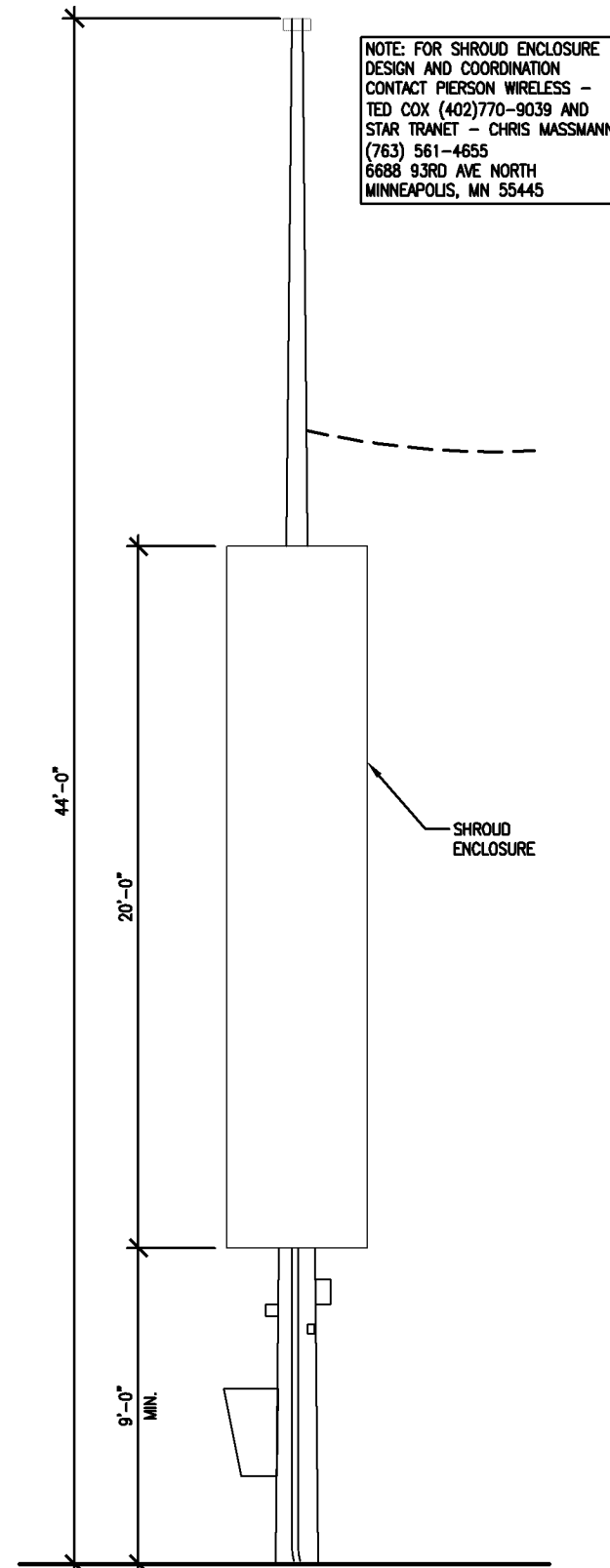
APPROVED ZONING REVIEW ONLY NMJ 01/24/2018



4 ANTENNA MOUNTING PLAN @ 24'-3" AGL
SCALE: 1/2" = 1'-0"

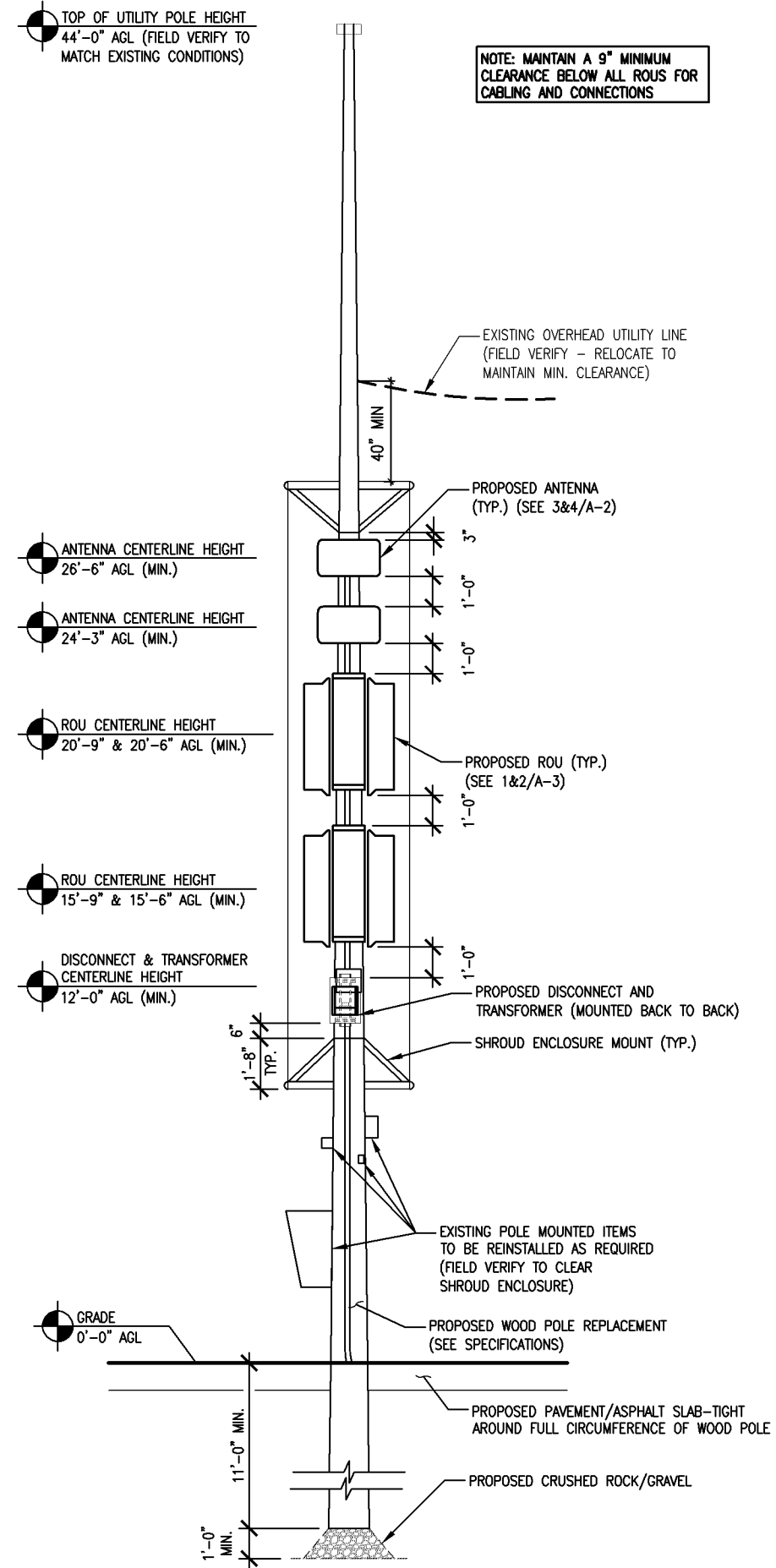


3 ANTENNA MOUNTING PLAN @ 26'-6" AGL
SCALE: 1/2" = 1'-0"



2 POLE ELEVATION WITH ENCLOSURE
SCALE: 3/16" = 1'-0"

NOTE: FOR SHROUD ENCLOSURE DESIGN AND COORDINATION CONTACT PIERSON WIRELESS - TED COX (402)770-9039 AND STAR TRANET - CHRIS MASSMANN (763) 561-4655 6688 93RD AVE NORTH MINNEAPOLIS, MN 55445



1 WEST POLE ELEVATION
SCALE: 3/16" = 1'-0"

NOT FOR
CONSTRUCTION

DESIGN 1

9973 VALLEY VIEW RD.
EDEN PRAIRIE, MN 55344
(952) 903-9299
WWW.DESIGN1EP.COM

verizon

10801 BUSH LAKE ROAD
BLOOMINGTON, MN 55438

MIN
MOA ODAS
NORTH FLAT
LOT: CENTRAL

8000 24TH AVENUE SOUTH
BLOOMINGTON, MN 55425

SHEET CONTENTS:
LIGHT POLE ELEVATIONS
ANTENNA PLANS

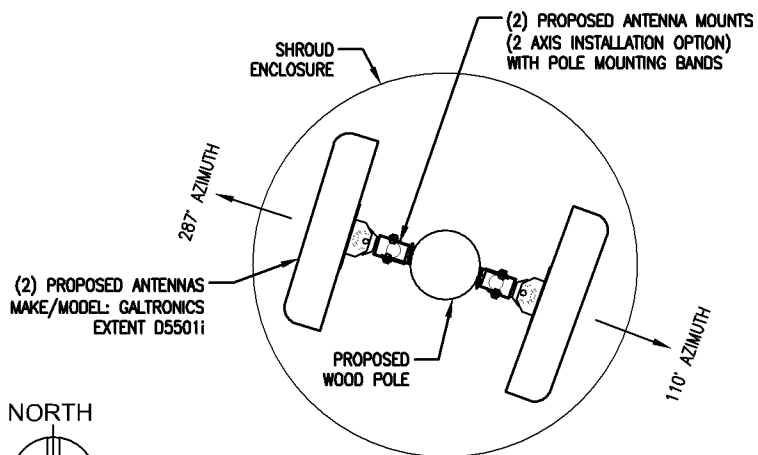
| | |
|-------------|----------|
| DRAWN BY: | RMK |
| DATE: | 08/23/17 |
| CHECKED BY: | TAB |
| REV. A | 09/07/17 |

A-2

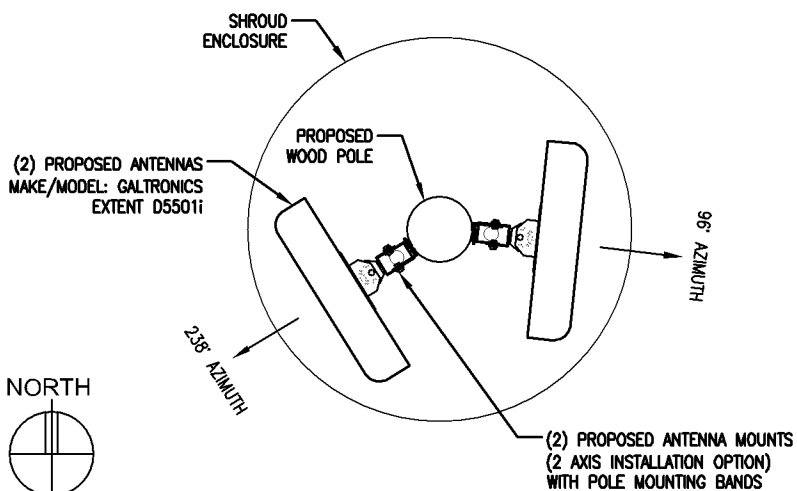
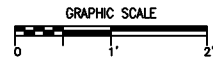
- NOTE:**
- 10'-0" OF CLEARANCE IS REQUIRED FOR VZW / EQUIPMENT ABOVE AND BELOW ALL PRIMARY ELECTRIFICATION.
 - 40" OF CLEARANCE IS REQUIRED FOR VZW / EQUIPMENT ABOVE AND BELOW ALL SECONDARY ELECTRIFICATION.
 - 12" OF CLEARANCE IS REQUIRED FOR VZW / EQUIPMENT ABOVE AND BELOW ALL TELECOMMUNICATION LINES.
 - 30" OF CLEARANCE IS REQUIRED FOR VZW / EQUIPMENT ABOVE ABOVE AND BELOW ALL NEUTRAL LINES.

NOTE: FOR SHROUD ENCLOSURE DESIGN AND COORDINATION CONTACT PIERSON WIRELESS - TED COX (402)770-9039 AND STAR TRANET - CHRIS MASSMANN (763) 561-4655 6688 93RD AVE NORTH MINNEAPOLIS, MN 55445

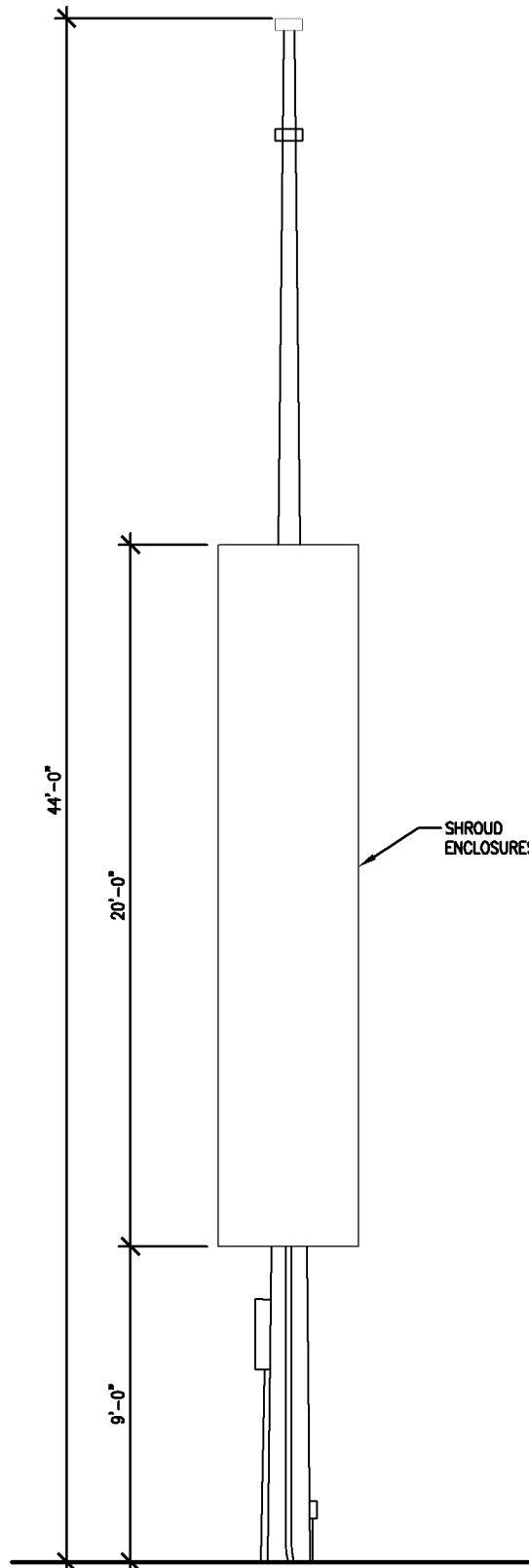
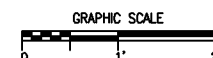
APPROVED ZONING REVIEW ONLY NMJ 01/24/2018



4 ANTENNA MOUNTING PLAN @ 24'-3" AGL
SCALE: 1/2" = 1'-0"



3 ANTENNA MOUNTING PLAN @ 26'-6" AGL
SCALE: 1/2" = 1'-0"



2 POLE ELEVATION WITH ENCLOSURE
SCALE: 3/16" = 1'-0"

TOP OF UTILITY POLE HEIGHT
44'-0" AGL (FIELD VERIFY TO MATCH EXISTING CONDITIONS)

ANTENNA CENTERLINE HEIGHT
26'-6" AGL (MIN.)

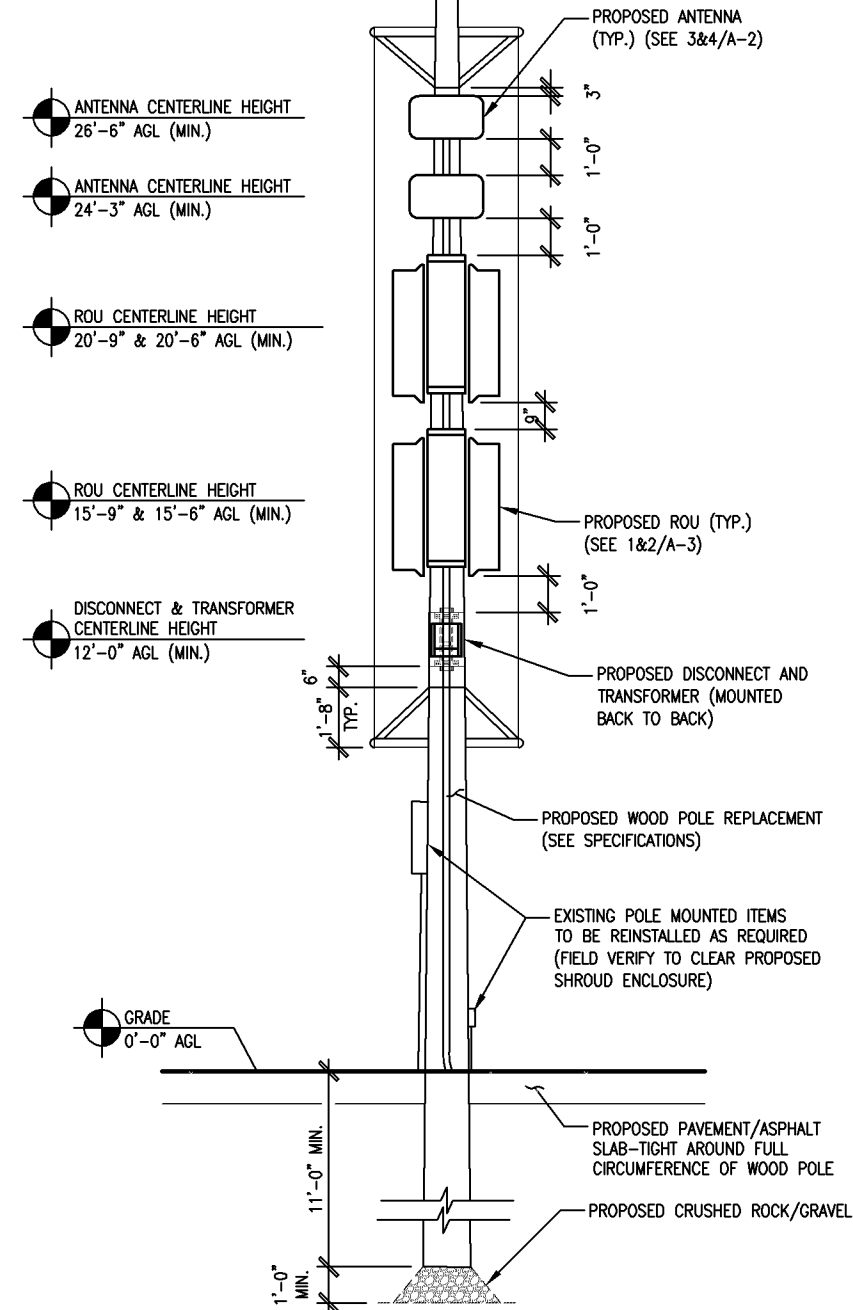
ANTENNA CENTERLINE HEIGHT
24'-3" AGL (MIN.)

ROU CENTERLINE HEIGHT
20'-9" & 20'-6" AGL (MIN.)

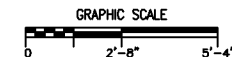
ROU CENTERLINE HEIGHT
15'-9" & 15'-6" AGL (MIN.)

DISCONNECT & TRANSFORMER
CENTERLINE HEIGHT
12'-0" AGL (MIN.)

GRADE
0'-0" AGL



1 WEST POLE ELEVATION
SCALE: 3/16" = 1'-0"



NOTE: MAINTAIN A 9" MINIMUM CLEARANCE BELOW ALL ROU FOR CABLING AND CONNECTIONS

NOT FOR
CONSTRUCTION

DESIGN 1

9973 VALLEY VIEW RD.
EDEN PRAIRIE, MN 55344
(952) 903-9299
WWW.DESIGN1EP.COM

verizon

10801 BUSH LAKE ROAD
BLOOMINGTON, MN 55438

MIN
MOA ODAS
NORTH FLAT
LOT: NORTH

8000 24TH AVENUE SOUTH
BLOOMINGTON, MN 55425

SHEET CONTENTS:
LIGHT POLE ELEVATIONS
ANTENNA PLANS

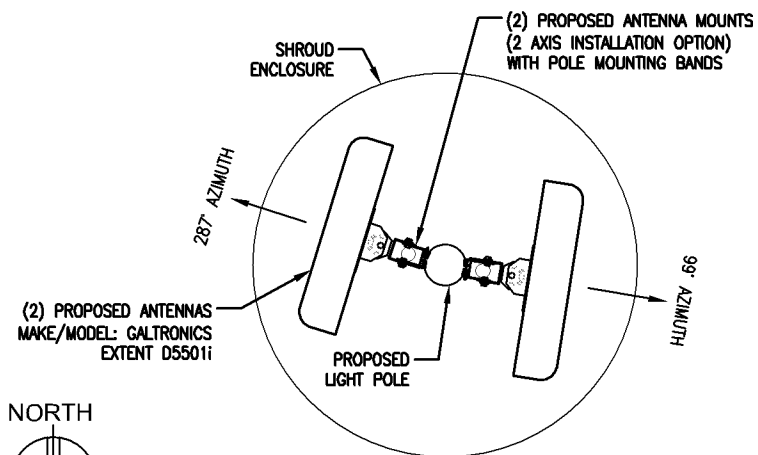
| | |
|-------------|----------|
| DRAWN BY: | RMK |
| DATE: | 08/23/17 |
| CHECKED BY: | TAB |
| REV. A | 09/07/17 |

A-2

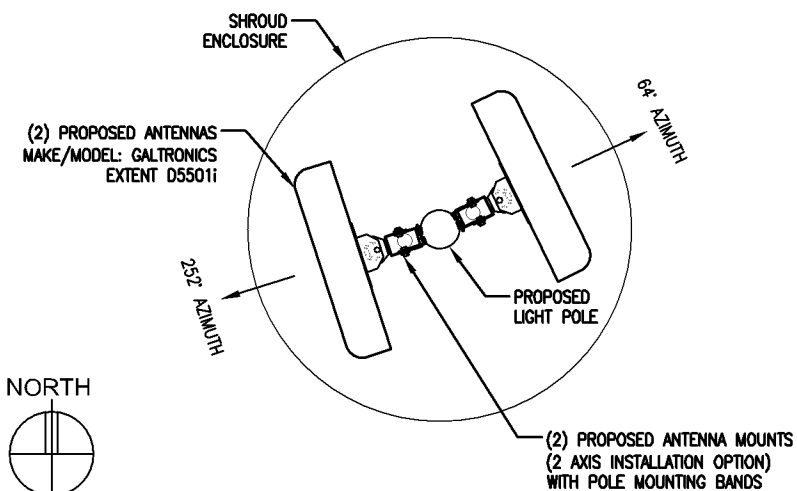
- NOTE:**
- 10'-0" OF CLEARANCE IS REQUIRED FOR VZW / EQUIPMENT ABOVE AND BELOW ALL PRIMARY ELECTRIFICATION.
 - 40" OF CLEARANCE IS REQUIRED FOR VZW / EQUIPMENT ABOVE AND BELOW ALL SECONDARY ELECTRIFICATION.
 - 12" OF CLEARANCE IS REQUIRED FOR VZW / EQUIPMENT ABOVE AND BELOW ALL TELECOMMUNICATION LINES.
 - 30" OF CLEARANCE IS REQUIRED FOR VZW / EQUIPMENT ABOVE ABOVE AND BELOW ALL NEUTRAL LINES.

NOTE: FOR SHROUD ENCLOSURE DESIGN AND COORDINATION CONTACT PIERSON WIRELESS - TED COX (402)770-9039 AND STAR TRANET - CHRIS MASSMANN (763) 561-4655 6688 93RD AVE NORTH MINNEAPOLIS, MN 55445

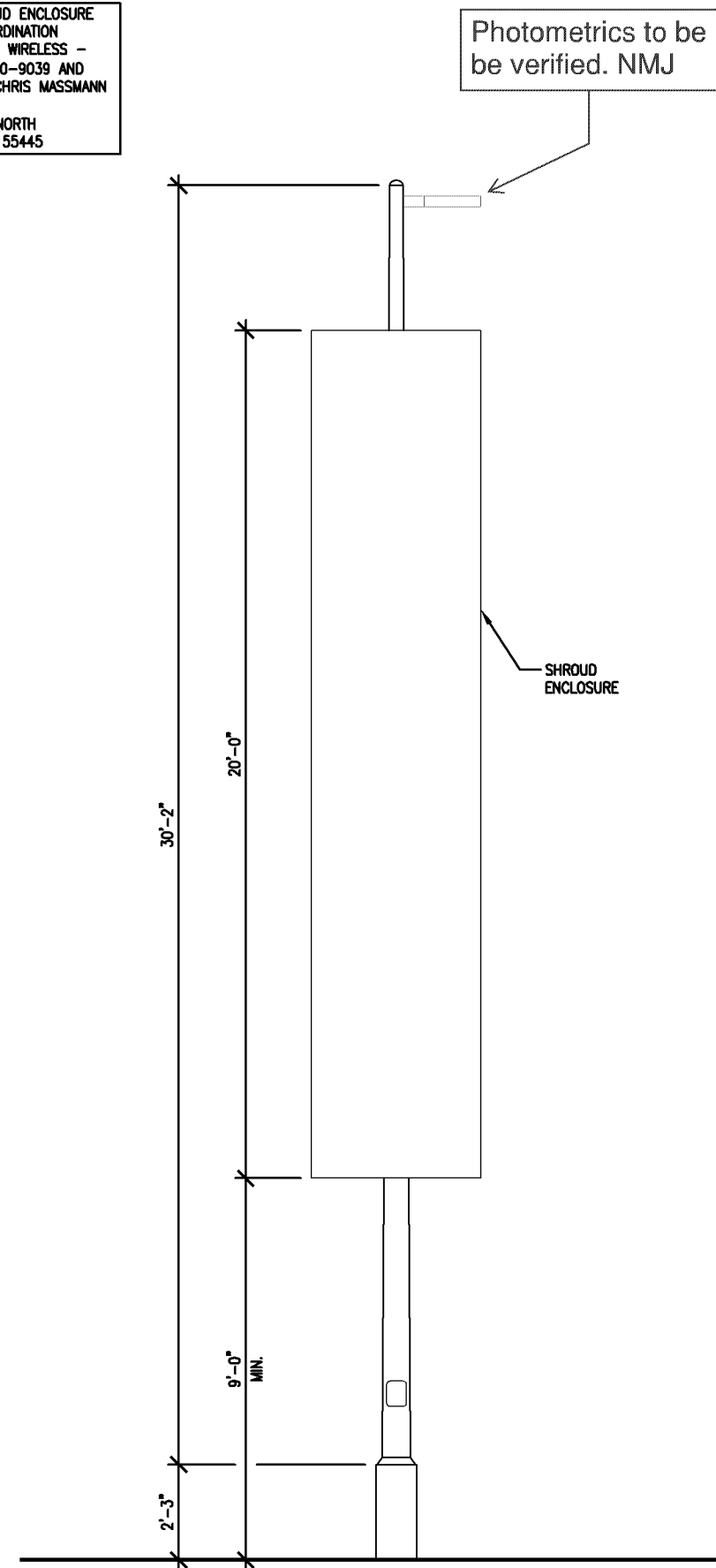
APPROVED ZONING REVIEW ONLY NMJ 01/24/2018



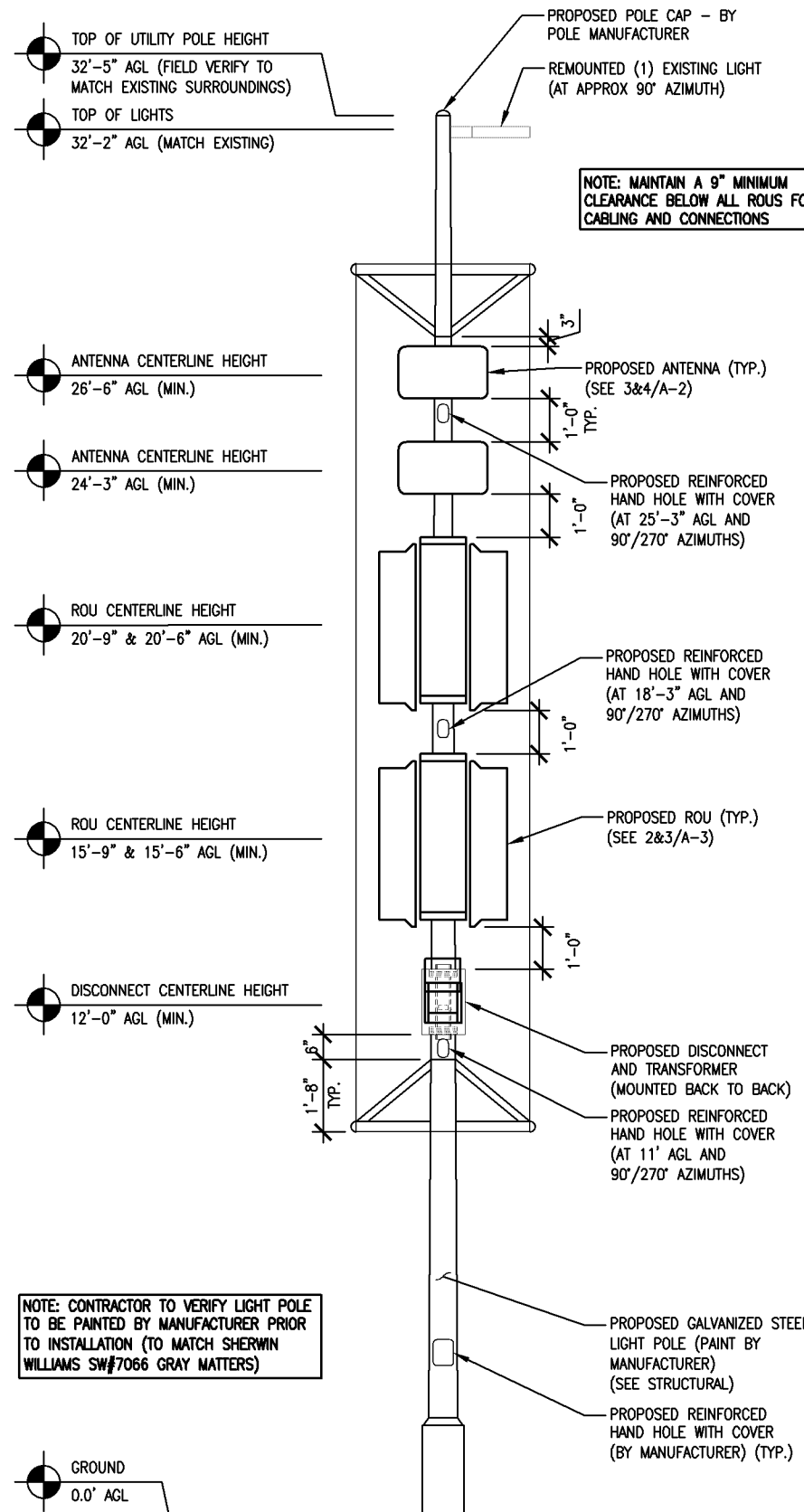
4 ANTENNA MOUNTING PLAN @ 24'-3" AGL
SCALE: 1/2" = 1'-0"



3 ANTENNA MOUNTING PLAN @ 26'-6" AGL
SCALE: 1/2" = 1'-0"



2 POLE ELEVATION WITH ENCLOSURE
SCALE: 1/4" = 1'-0"



1 NORTH POLE ELEVATION
SCALE: 1/4" = 1'-0"

NOT FOR CONSTRUCTION

DESIGN 1

9973 VALLEY VIEW RD.
EDEN PRAIRIE, MN 55344
(952) 903-9299
WWW.DESIGN1EP.COM

verizon

10801 BUSH LAKE ROAD
BLOOMINGTON, MN 55438

MIN
MOA ODAS
NORTH FLAT
LOT: SOUTH

8000 24TH AVENUE SOUTH
BLOOMINGTON, MN 55425

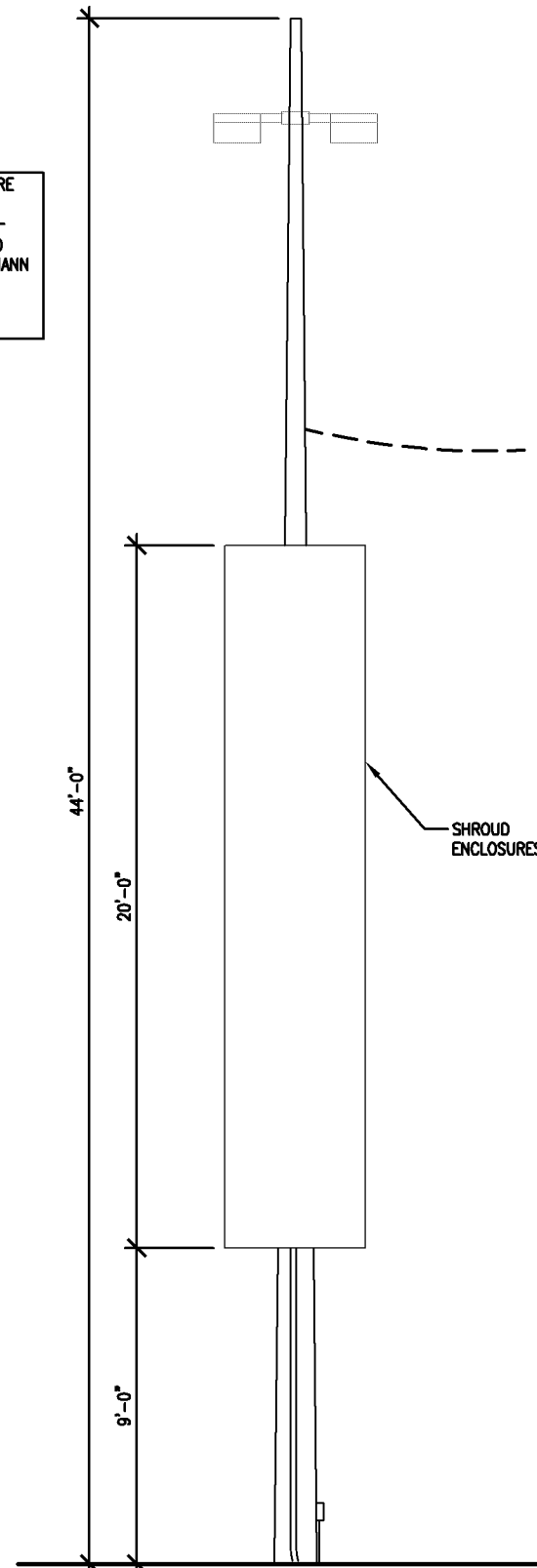
SHEET CONTENTS:
LIGHT POLE ELEVATIONS
ANTENNA PLANS

| | |
|-------------|----------|
| DRAWN BY: | RMK |
| DATE: | 08/23/17 |
| CHECKED BY: | TAB |
| REV. A | 09/07/17 |

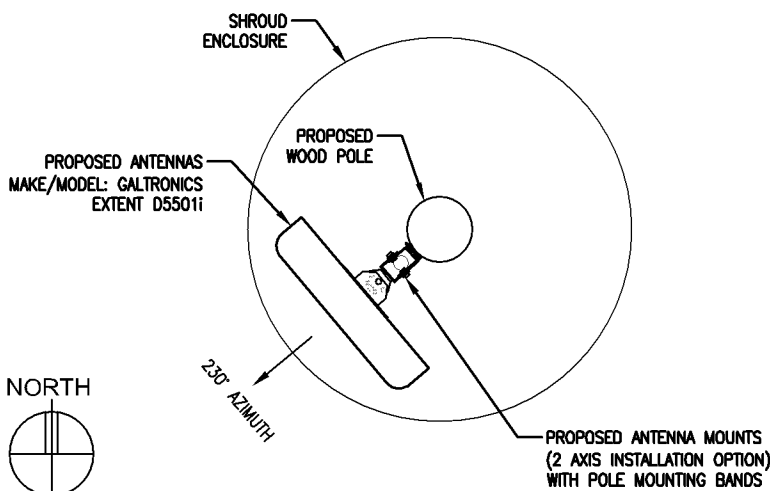
- NOTE:**
- 10'-0" OF CLEARANCE IS REQUIRED FOR VZW / EQUIPMENT ABOVE AND BELOW ALL PRIMARY ELECTRIFICATION.
 - 40" OF CLEARANCE IS REQUIRED FOR VZW / EQUIPMENT ABOVE AND BELOW ALL SECONDARY ELECTRIFICATION.
 - 12" OF CLEARANCE IS REQUIRED FOR VZW / EQUIPMENT ABOVE AND BELOW ALL TELECOMMUNICATION LINES.
 - 30" OF CLEARANCE IS REQUIRED FOR VZW / EQUIPMENT ABOVE ABOVE AND BELOW ALL NEUTRAL LINES.

NOTE: FOR SHROUD ENCLOSURE DESIGN AND COORDINATION CONTACT PIERSON WIRELESS - TED COX (402)770-9039 AND STAR TRANET - CHRIS MASSMANN (763) 561-4655 6688 93RD AVE NORTH MINNEAPOLIS, MN 55445

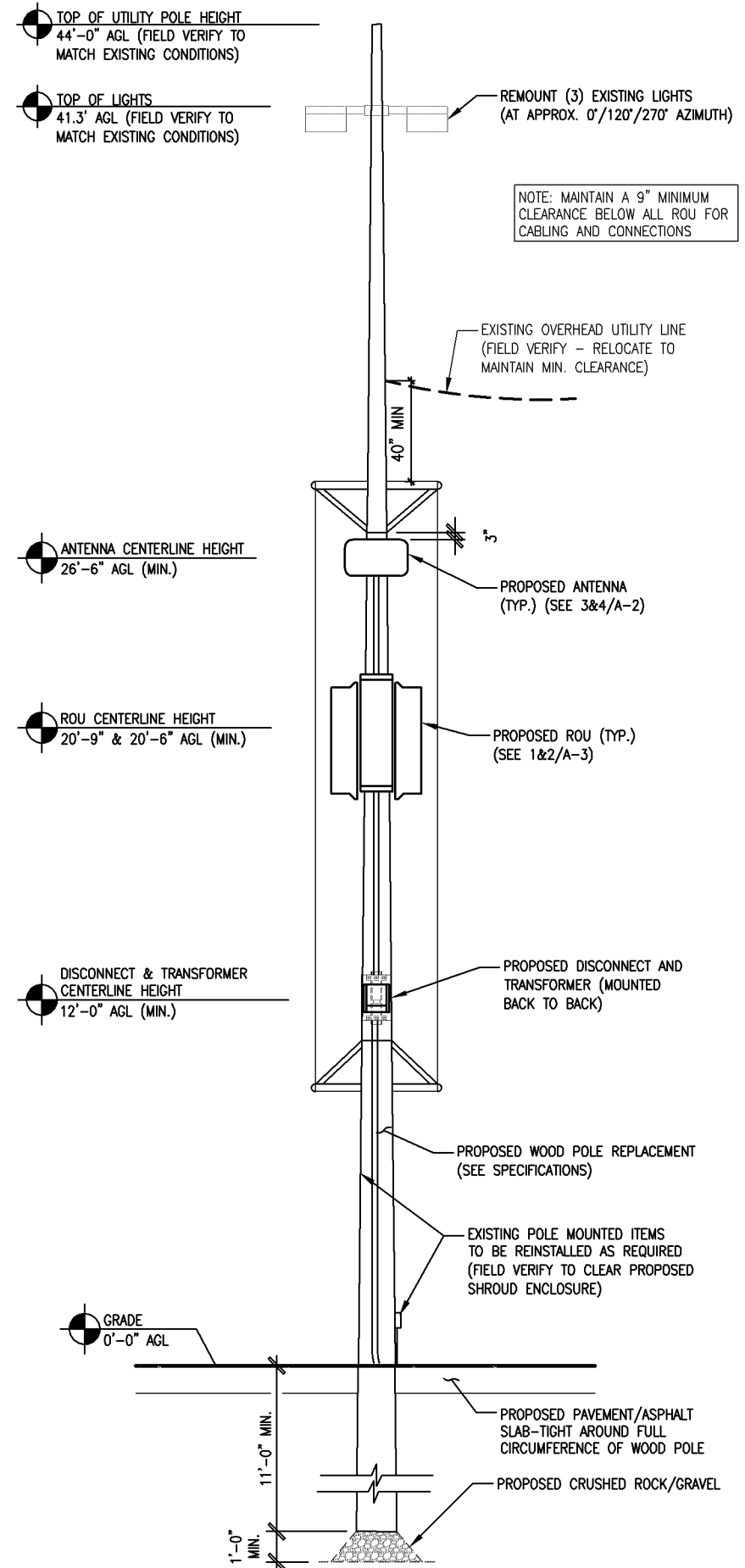
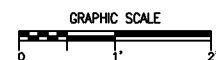
**APPROVED
ZONING REVIEW ONLY
NMJ 01/24/2018**



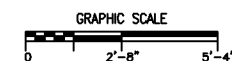
2 POLE ELEVATION WITH ENCLOSURE
SCALE: 3/16" = 1'-0"



3 ANTENNA MOUNTING PLAN @ 26'-6" AGL
SCALE: 1/2" = 1'-0"



1 WEST POLE ELEVATION
SCALE: 3/16" = 1'-0"



NOT FOR CONSTRUCTION

DESIGN 1

9973 VALLEY VIEW RD.
EDEN PRAIRIE, MN 55344
(952) 903-9299
WWW.DESIGN1EP.COM

verizon

10801 BUSH LAKE ROAD
BLOOMINGTON, MN 55438

MIN
MOA ODAS
NORTH FLAT
LOT: WEST

8000 24TH AVENUE SOUTH
BLOOMINGTON, MN 55425

SHEET CONTENTS:
LIGHT POLE ELEVATIONS
ANTENNA PLANS

| | |
|-------------|----------|
| DRAWN BY: | RMK |
| DATE: | 08/23/17 |
| CHECKED BY: | TAB |
| REV. A | 09/07/17 |

A-2