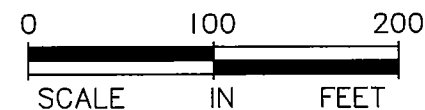
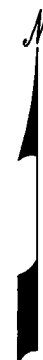
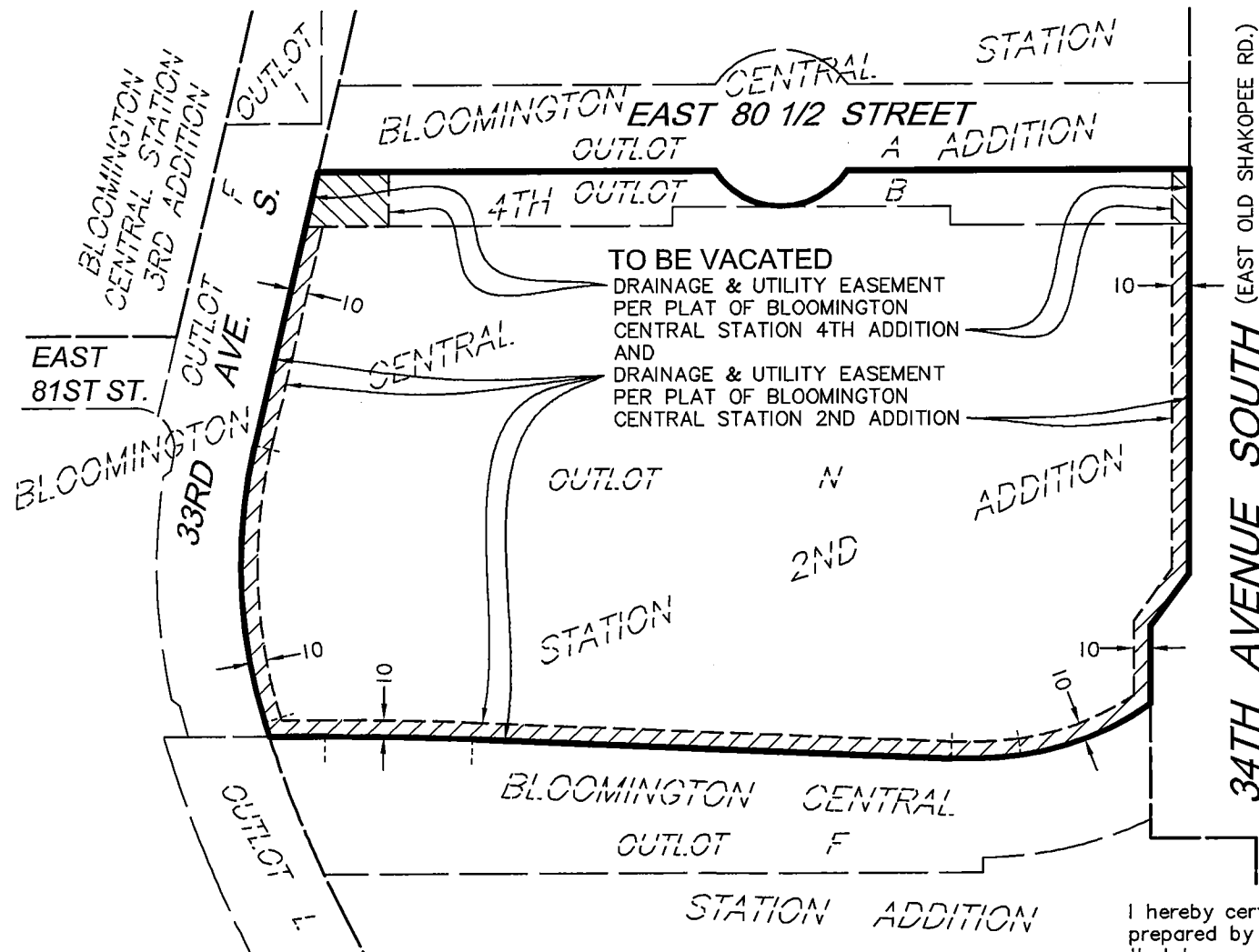


PL201700226
PL2017-226



PROPOSED DESCRIPTION OF EASEMENTS TO BE VACATED

The drainage and utility easements dedicated in the plats of BLOOMINGTON CENTRAL STATION 2ND ADDITION and BLOOMINGTON CENTRAL STATION 4TH ADDITION, according to the recorded plats thereof, Hennepin County, Minnesota, over, under and across Outlot N, said Bloomington Central Station 2nd Addition and Outlot B, said Bloomington Central Satation 4th Addition.

I hereby certify that this sketch, plan, or report was prepared by me or under my direct supervision and that I am a duly Licensed Land Surveyor under the laws of the State of Minnesota.

Dated this 28th day of September, 2017

SUNDE LAND SURVEYING, LLC.

By: Mark S. Hanson
Mark S. Hanson, P.L.S. Minn. Lic. No. 15480



9001 East Bloomington Freeway (35W) • Suite 118
Bloomington, Minnesota 55420-3435
952-881-2455 (Fax: 952-888-9526)
www.sunde.com