

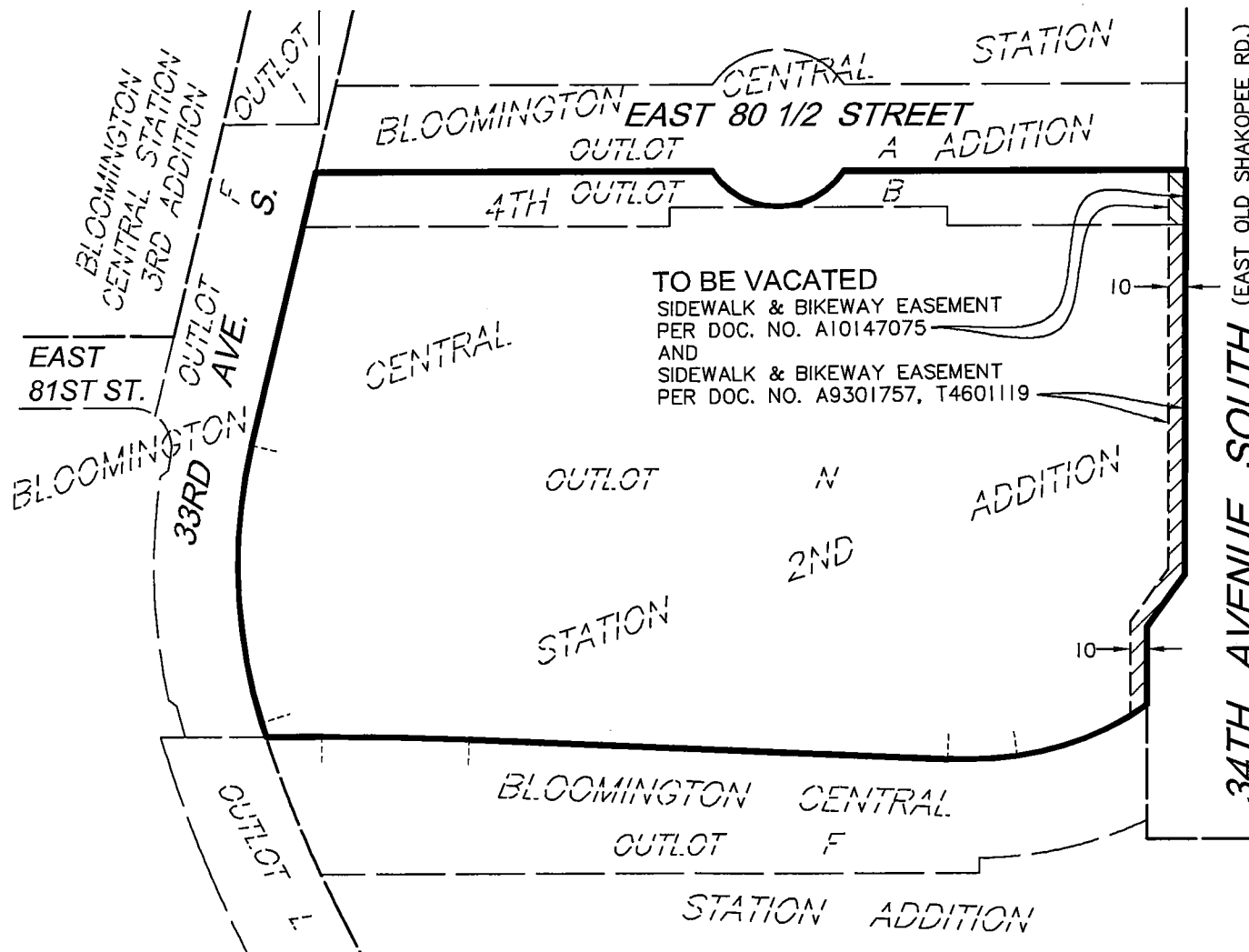
PL201700226
PL2017-226

**PROPOSED DESCRIPTION OF EASEMENTS
 TO BE VACATED**

That part of an easement for sidewalk and bikeway purposes over, under and across Outlot B, BLOOMINGTON CENTRAL STATION 4TH ADDITION according to the recorded plat thereof, Hennepin County, Minnesota, as described in Document No. A10147075, filed of record in the office of the County Recorder, Hennepin County, Minnesota.

And

That part of an easement for sidewalk and bikeway purposes over and across Outlot N, BLOOMINGTON CENTRAL STATION 2ND ADDITION, according to the recorded plat thereof, Hennepin County, Minnesota, as described in Document No. A9301757, filed of record in the office of the County Recorder and Document No. T4601119 filed of record in the office of the Registrar of Titles, Hennepin County.

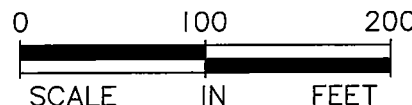


I hereby certify that this sketch, plan, or report was prepared by me or under my direct supervision and that I am a duly Licensed Land Surveyor under the laws of the State of Minnesota.

Dated this 28th day of September, 2017

SUNDE LAND SURVEYING, LLC.

By: Mark S. Hanson
 Mark S. Hanson, P.L.S. Minn. Lic. No. 15480



9001 East Bloomington Freeway (35W) • Suite 118
 Bloomington, Minnesota 55420-3435
 952-881-2455 (Fax: 952-888-9526)
www.sunde.com