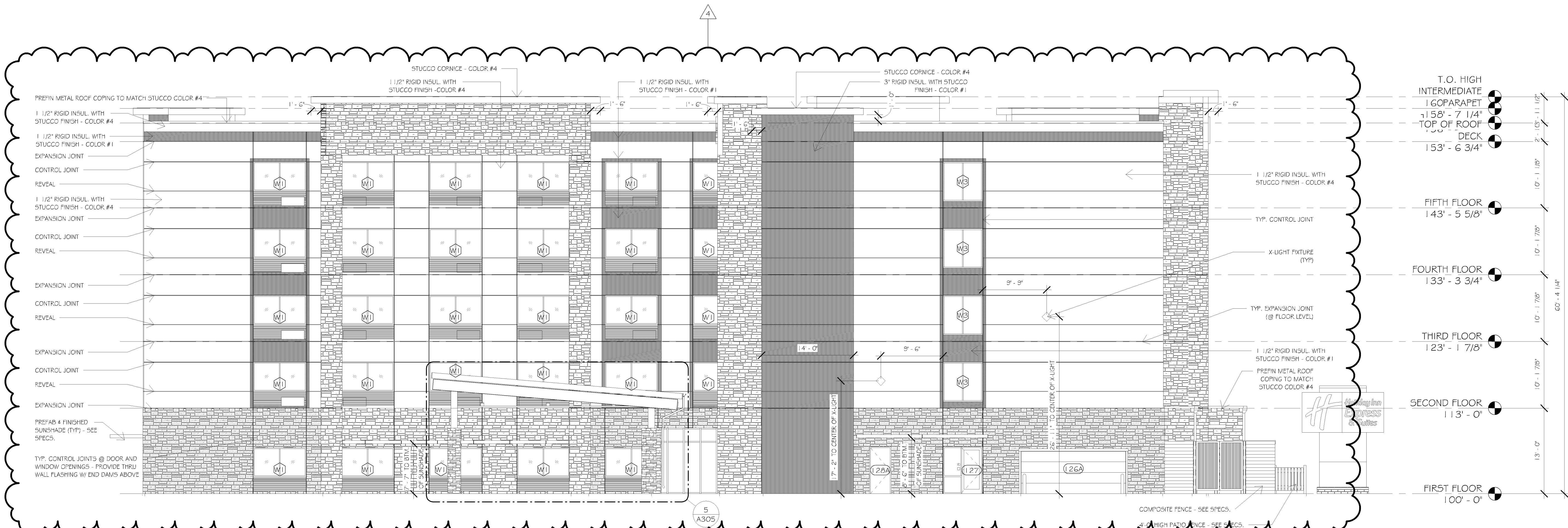
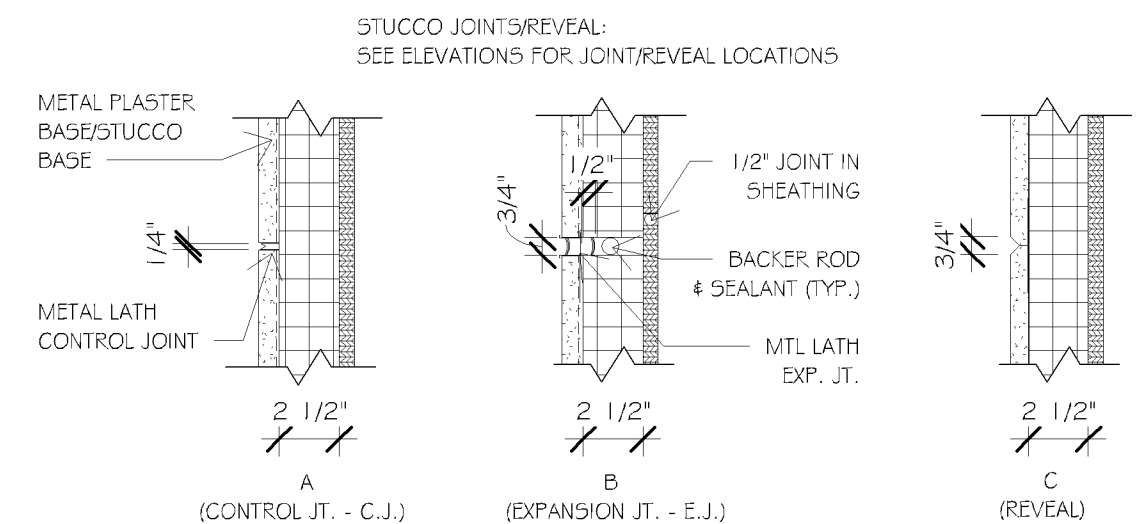


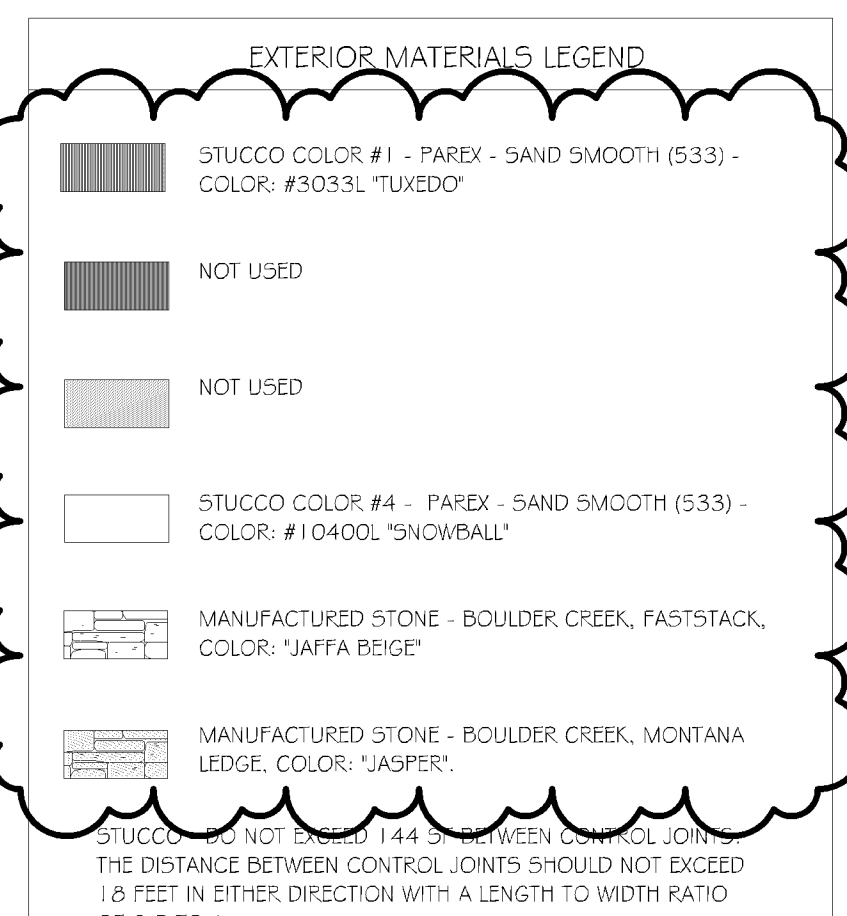
**1 NORTH EXTERIOR ELEVATION**  
SCALE: 1/8" = 1'-0"



**2 EAST EXTERIOR ELEVATION**  
SCALE: 1/8" = 1'-0"



**STUCCO JOINT DETAILS**  
SCALE: 1 1/2" = 1'-0"



- EXTERIOR ELEVATION NOTES**
- ALL EXTERIOR VENTS & LOUVERS TO BE PAINTED TO MATCH ADJACENT WALL COLOR. SEE MECHANICAL FOR SIZE AND LOCATION.
  - FOAM PLASTIC INSULATION GREATER THAN 4" IN THICKNESS SHALL HAVE A MAXIMUM FLAME SPREAD INDEX OF 75 AND A SMOKE DEVELOPED INDEX OF 450 WHEN TESTED AT A MINIMUM THICKNESS OF 4".
  - PROVIDE BLOCKING AND ELECTRICAL CIRCUITING TO ALL SIGN LOCATIONS. COORDINATE WITH SIGN CONTRACTOR.
  - STUCCO NOT TO EXCEED 144 SQ. FT. W/O CONTROL JOINT. SEE DETAILS FOR CONTROL AND EXPANSION JOINTS.

**Certification & Seal:**  
I hereby certify that this plan, specification, or report was prepared by me or under my direct supervision and that I am a duly Registered Architect under the laws of the state of Minnesota.

*John D. Halder* 6/7/2017  
John D. Halder Date  
Registered Professional Engineer Registration Number

4	Addendum #4	8/23/2017
Revision		Date

DATE ISSUED 2017-06-07

PROJECT TITLE: PERMITTING

PROJECT OWNER:  
**HOLIDAY INN EXPRESS # SUITES 5 STORIES 171 UNITS**

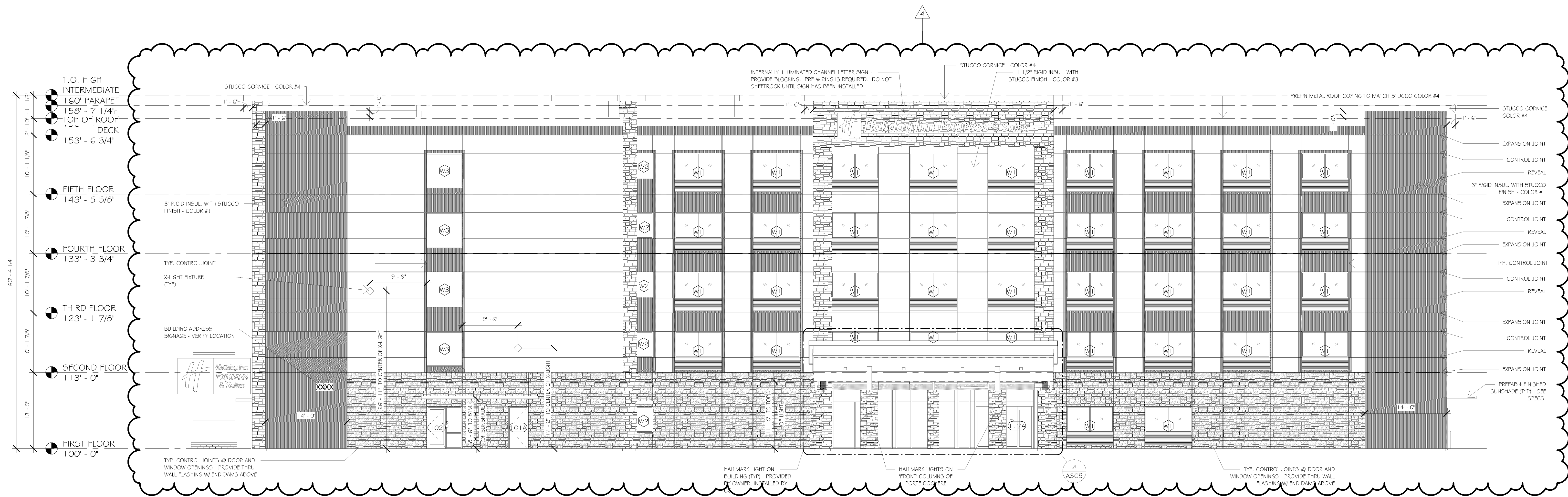
PROJECT LOCATION:  
**HAWKEYE HOTELS**

**BLOOMINGTON, MN**

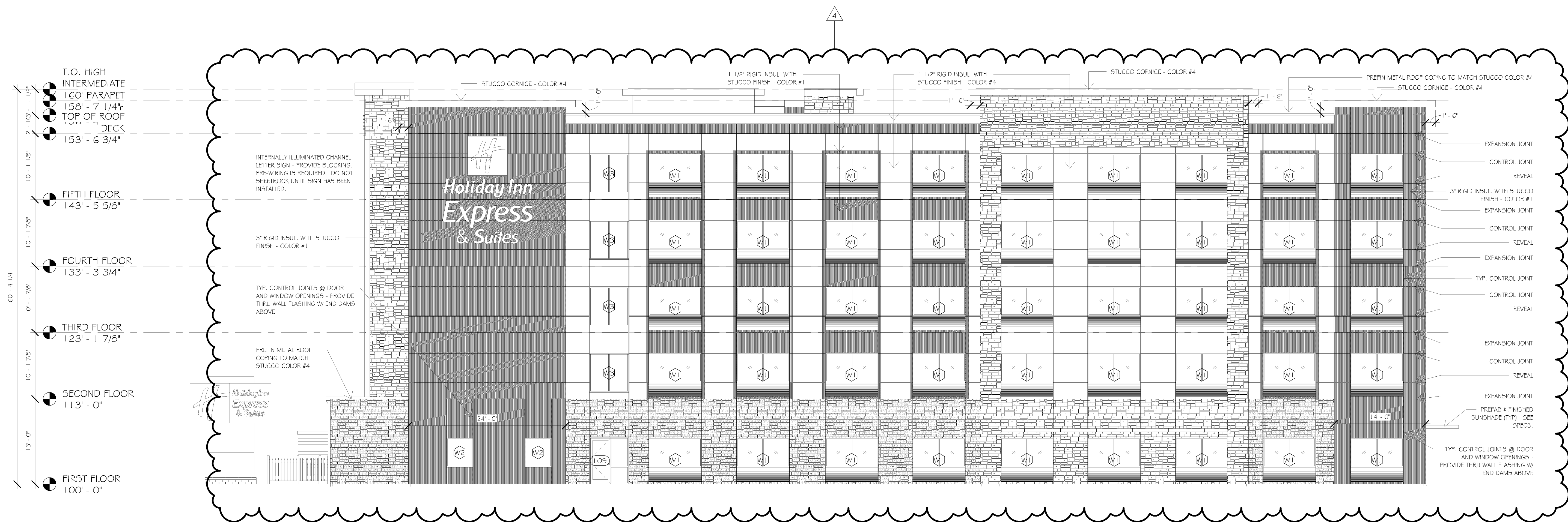
SHEET TITLE:  
**EXTERIOR ELEVATIONS**

PROJECT NUMBER: 33476  
SHEET NUMBER: A201





1 SOUTH EXTERIOR ELEVATION  
SCALE: 1/8\"/>



2 WEST EXTERIOR ELEVATION  
SCALE: 1/8\"/>

EXTERIOR ELEVATION NOTES	
1.	ALL EXTERIOR VENTS & LOUVERS TO BE PAINTED TO MATCH ADJACENT WALL COLOR. SEE MECHANICAL FOR SIZE AND LOCATIONS.
2.	FOAM PLASTIC INSULATION GREATER THAN 4\"/>
3.	PROVIDE BLOCKING AND ELECTRICAL CIRCUITING TO ALL SIGN LOCATIONS; COORDINATE WITH SIGN CONTRACTOR.
4.	STUCCO NOT TO EXCEED 144 SQ. FT. W/O CONTROL JOINT. SEE DETAILS FOR CONTROL AND EXPANSION JOINTS.

EXTERIOR MATERIALS LEGEND	
	STUCCO COLOR #1 - PARFEX - SAND SMOOTH (533) - COLOR: #3033L "TUXEDO"
	NOT USED
	NOT USED
	STUCCO COLOR #4 - PARFEX - SAND SMOOTH (533) - COLOR: #1040S "SNOWBALL"
	MANUFACTURED STONE - BOULDER CREEK, MONTANA LEDGE, COLOR: "ASPIRE"
	MANUFACTURED STONE - BOULDER CREEK, MONTANA LEDGE, COLOR: "ASPIRE"

Certification & Seal:  
I hereby certify that this plan, specification, or report was prepared by me or under my direct supervision and that I am a duly Registered Architect under the laws of the state of Minnesota.

*John D. Halder* 6/7/2017  
Signature Date  
22890  
Registration Number

4	Addendum #4	8/23/2017
Revision		Date
DATE ISSUED	2017-06-07	
ISSUE	PERMITTING	

PROJECT TITLE:	HOLIDAY INN EXPRESS # SUITES 5 STORIES 171 UNITS
PROJECT OWNER:	HAWKEYE HOTELS
PROJECT LOCATION:	BLOOMINGTON, MN
SHEET TITLE:	EXTERIOR ELEVATIONS
PROJECT NUMBER:	33476
SHEET NUMBER:	A202

### Description

Quarzputz®, Sandblast®, Freestyle®, Sandpebble®, and Sandpebble® Fine finishes are premixed 100% acrylic-based coatings which are offered in standard colors as well as custom colors. They provide the finishing touch that adds lasting color and texture to exterior and interior walls. These are the original five finish textures with DPR (dirt pickup resistant) chemistry that will remain clean longer after application.

### Uses

DPR finishes are durable architectural finishes providing surface color and texture for Dryvit systems. These finishes can also be applied over properly prepared substrates such as exterior masonry, stucco, precast or cast-in-place concrete and other approved substrates. The finishes are also suitable for interior applications. All finishes can be trowel applied or spray applied with a hopper gun or pole gun-type sprayer.

### Coverage

All coverages are approximate and depend upon substrate, details and individual application technique. The finishes are shipped in 70 lb (32 kg) pails.

**Quarzputz:** approximately 140 ft<sup>2</sup> (13 m<sup>2</sup>) per pail.

**Sandblast:** approximately 150 ft<sup>2</sup> (14 m<sup>2</sup>) per pail.

**Freestyle:** Must be calculated based on the texture desired. However, a coating thickness of 1/16 in (1.6 mm) to 1/4 in (6.4 mm) must be maintained.

**Sandpebble:** approximately 130 ft<sup>2</sup> (12 m<sup>2</sup>) per pail.

**Sandpebble Fine:** approximately 160 ft<sup>2</sup> (15 m<sup>2</sup>) per pail.

### Texture

Quarzputz, Sandblast, Sandpebble and Sandpebble Fine finishes achieve a texture which is governed by aggregate size as well as the trowel motion in finishing the

wall. Quarzputz produces an open-textured pattern in a regular or random style. Sandblast produces a sand-like texture. Sandpebble produces a rough, pebbly texture, which is ideal for masking surface imperfections. Freestyle allows almost any ornamental trowel texture to be achieved. Sandpebble Fine produces a fine pebble texture.

### Properties

**Drying Time** - Drying of the finishes is dependent on the air temperature, relative humidity and finish thickness. Under average drying conditions [70 °F (21 °C), 55% R. H.], the finish will dry in 24 hours. Lower temperature and higher humidity will require that the DPR finish be protected for longer periods. Protect work from rain during the drying period.

### Testing Information

For individual test data on this product's properties, refer to the chart included with this document.

### Application Procedure

**Job Conditions** - Air and surface temperature for application of finishes must be 40 °F (4 °C) or higher and must remain so for a minimum of 24 hours.

**Temporary Protection** - Shall be provided at all times until the DPR finish is dry, and installation of permanent flashings, sealants, etc. are completed to protect the wall from inclement weather and other sources of damage.

### Surface Preparation

- Surface must be smooth and free of imperfections to ensure satisfactory appearance.
- Interior or exterior surfaces must be above 40 °F (4 °C) and must be clean, dry, structurally sound and free of efflorescence, grease, oil, form release agents and curing compounds.
- **Dryvit Reinforced Base Coat:** The base coat must dry and cure

for a minimum of 24 hours before application of any finish.

- **Concrete:** Shall have cured a minimum of 28 days prior to application of the finishes. If efflorescence, form release agents or curing compounds are present on the concrete surface, the surface shall be thoroughly washed with muriatic acid and flushed to remove residual acid. All projections shall be removed and small voids filled with Dryvit Primus®, Primus® DM, Genesis® or Genesis® DM mixture (see product data sheets for mixing and application). Dryvit Color Prime™ shall be applied to the prepared concrete surface using a roller or brush (see product data sheet for mixing and application) prior to application of the finish.
- **Masonry:** The masonry surface, with joints struck flush, shall be "skim coated" with Primus, Primus DM, Genesis or Genesis DM mixture (see product data sheets for mixing and application) to produce a smooth, level surface.
- **Stucco:** Shall be dry and have cured a minimum of 7 days. Dryvit Color Prime, Color Prime W™ or Primer with Sand™ shall be applied over the cured brown coat surface using a roller or brush (see product data sheet for mixing and application) prior to applying the finish. If additives are present in the stucco, a test patch shall be made and bond strength checked prior to application.

**Mixing** – Some settling of the finish may occur during shipping. Thoroughly mix the finish with a "Twister" paddle or equivalent mixing blade powered by a 1/2 in (12.7 mm) drill, 450-500 rpm, until a uniform workable consistency is attained.

### Application

- **Quarzputz or Sandblast:** using a stainless steel trowel, apply and level a coat of Quarzputz or

Sandblast to a uniform thickness (Quarzputz- no thicker than the largest aggregate; Sandblast - applied in a thickness of 3/64 in (1.2 mm) – approximately 1 1/2 times the largest aggregate). The textures are achieved by uniform hand motion and/or type of tool used. Maintain wet edge for uniformity of color and texture.

- **Sandpebble or Sandpebble Fine:** roughly apply an even coat of finish to a thickness slightly thicker than the largest aggregate size. Then pull across the rough application coat using a horizontal trowel motion and develop a uniform thickness no greater than the largest aggregate of the material. The textures are achieved by uniform hand motion and/or type of tool used. Maintain wet edge for uniformity of color and texture.
- **Freestyle:** using a stainless steel trowel, apply a coat of the Freestyle slightly thicker than 1/16 in (1.6 mm). The texture is

either pulled out of this base or achieved by adding more Freestyle finish to the base layer using the same texturing motions that are used with other plaster materials, such as a skip trowel finish. The thickness of any Freestyle finish texture shall not exceed 1/4 in (6.4 mm).

**Clean Up** - Clean tools with water while the finishes are still wet.

**Maintenance** - All Dryvit products are designed to require minimal maintenance. However, as with all building products, depending on location, some cleaning may be required. See Dryvit publication DS152 on cleaning and recoating.

#### **Storage**

Finishes must be stored at a minimum of 40 °F (4 °C) and a maximum of 100 °F (38 °C) in tightly sealed containers protected from weather and out of direct sunlight.

#### **Cautions and Limitations**

- Avoid applying finish in direct sunlight. Always work on the shady side of the wall or protect the area with appropriate shading material.
- Dryvit finishes must not be used on exposed exterior horizontal surfaces. Minimum slope is 6 in 12 which is 27°. Maximum length of slope is 12 in (305 mm).
- Dryvit finishes shall not be used below grade when applied as the finish for an EIF System.
- Dryvit finishes are not intended for direct-applied, vertical applications over exterior type gypsum based sheathing board, foam plastic insulation or other type insulation board.
- Dryvit finishes shall not be returned into any sealant joint. Instead, a coat of Dryvit Color Prime or Dryvit Demandit® Smooth shall be applied over the base coat that will be in contact with the sealant.

#### **Technical and Field Services**

Available on request.

DPR Finish Testing			
Test	Test Method	Criteria	Results <sup>1</sup>
Surface Burning Characteristics	ASTM E 84	ICC and ANSI/EIMA 99-A-2001 Flame Spread <25 Smoke Developed <450	Passed
Flexibility <sup>2</sup>	ASTM D 522 Method B	No ICC or ANSI/EIMA Criteria	Passed: 1.5" diameter @ 73 °F
Water Vapor Transmission	ASTM E 96 Procedure B	ICC: Vapor Permeable No ANSI/EIMA Criteria	40 Perms
Accelerated Weathering	ASTM G 154 Cycle 1 (QUV)	ANSI/EIMA 99-A-2001 2000 hours: No deleterious effects <sup>3</sup>	5000 hours: No deleterious effects <sup>3</sup>
	ASTM G 155 Cycle 1 (Xenon Arc)	ICC: 2000 hours: No deleterious effects <sup>3</sup>	2000 hours: No deleterious effects <sup>3</sup>
Chalk Rating	ASTM D 4214 after ASTM G 154 Cycle 1	No ICC or ANSI/EIMA Criteria	Chalk rating: 9+ after 5000 hours QUV
Instrumentally Measured Color Difference <sup>4</sup> (includes yellowing)	ASTM D 2244 CIELAB, 10° Observer after ASTM G 154 Cycle 1	No ICC or ANSI/EIMA Criteria	Color change: 0.51 Delta E after 5000 hours QUV
Freeze-Thaw Resistance	ASTM E 2485 (formerly EIMA 101.01)	ANSI/EIMA 99-A-2001 60 cycles: No deleterious effects <sup>3</sup>	90 cycles: No deleterious effects <sup>3</sup>
	ASTM E 2485 ICC – ES Proc. (AC212)	ICC: 10 cycles No deleterious effect <sup>3</sup>	10 cycles: No deleterious effects <sup>3</sup>
Mildew Resistance	ASTM D 3273	ANSI/EIMA 99-A-2001 28 days: No growth	60 days: No growth
Salt Spray Resistance	ASTM B 117	ICC and ANSI/EIMA 99-A-2001 300 hours: No deleterious effects <sup>3</sup>	1000 hours: No deleterious effects <sup>3</sup>
Water Resistance	ASTM D 2247	ICC and ANSI/EIMA 99-A-2001 14 days: No deleterious effects <sup>3</sup>	42 days: No deleterious effects <sup>3</sup>
Abrasion Resistance	ASTM D 968 Method A Falling Sand	ANSI/EIMA 99-A-2001 528 quarts (500 liters): No deleterious effects <sup>3</sup>	1057 quarts (1000 liters): No deleterious effects <sup>3</sup>
	ASTM D 4060 Taber Abrasion (1 kg load)	No ICC or ANSI/EIMA Criteria	1000 cycles: .83 mg mass loss
Adhesion to Concrete	ASTM D 4541	ICC and ANSI/EIMA 99-A-2001: 15 psi minimum	>200 psi
Tensile Bond	ASTM C 297/E 2134 (formerly EIMA 101.03)	ICC and ANSI/EIMA 99-A-2001: 15 psi minimum	>25 psi

1. Testing referenced is based on Quarzputz Pastel Base.  
2. Finish applied over aluminum panels, bent on cylindrical mandrels as described in ASTM D 522 Method B. Lower diameter indicates higher flexibility.  
3. No cracking, checking, rusting, crazing, erosion, blistering, peeling, or delamination when viewed under 5x magnification.  
4. Delta E is total color difference, including yellowing, lightening, darkening, changes in red, blue, and green color values. Finish exposed to 5,000 hours of QUV prior to evaluating Delta E.

Dryvit Systems, Inc.  
One Energy Way  
West Warwick, RI 02893  
(800) 556-7752  
www.dryvit.com

Information contained in this product sheet conforms to the standard detail recommendations and specifications for the installation of Dryvit Systems, Inc. products as of the date of publication of this document and is presented in good faith. Dryvit Systems, Inc. assumes no liability, expressed or implied, as to the architecture, engineering or workmanship of any project. To ensure that you are using the latest, most complete information, contact Dryvit Systems, Inc.

For more information on [Dryvit Systems](#) or [Continuous Insulation](#), visit these links.



# SANDPEBBLE NT™ & SANDPEBBLE FINE NT™ DS459

## Aggregate Textured 100% Acrylic-Based Dirt Pickup Resistance Finishes

---

### Description

Sandpebble NT™ and Sandpebble Fine NT™ are 100% acrylic-based finishes which are offered in standard and custom colors. They are specially formulated to improve blister resistance and to improve application characteristics that develop uniform texture and appearance more easily. The finishing touch that adds lasting color and texture to exterior and interior walls. Dryvit finishes will remain cleaner longer with improved dirt pickup resistant chemistry. Dryvit PMR (Proven Mildew Resistance) is also available.

### Uses

The finishes are durable, providing, surface color and texture for Dryvit systems. These finishes can also be applied over properly prepared substrates such as exterior masonry, stucco, precast or cast-in-place concrete and other approved substrates. The finishes are also suitable for interior applications. All finishes can be trowel applied or spray applied with a hopper gun or pole gun-type sprayer.

### Coverage

Coverages are approximate and depend upon substrate, details and individual application technique. The finishes are shipped in 70 lb (32 kg) pails. Sandpebble NT: Approximately 130 ft<sup>2</sup> (12 m<sup>2</sup>) per pail. Sandpebble Fine NT: Approximately 160 ft<sup>2</sup> (15 m<sup>2</sup>) per pail.

### Texture

The finishes achieve a texture, which is governed by aggregate size as well as the trowel motion in finishing the wall. Sandpebble NT produces a rough, pebbly texture, which is ideal for masking surface imperfections. Sandpebble Fine NT produces a fine pebble texture.

### Properties

**Drying Time** - Drying of the finishes is dependent on the air temperature, relative humidity and coating thickness. Under average drying conditions [70 °F (21 °C), 55% R. H.], protect work from rain for at least 24 hours.

### Water Vapor Transmission:

(ASTM E 96) - The Dryvit finishes are permeable to water vapor.

### Moisture Resistance:

(ASTM D 2247) - No deleterious effects after 14-day exposure.

### Mildew Resistance:

(ASTM D 3273) - No growth supported after 28 day exposure.

### Salt Spray Resistance:

(ASTM B 117) - No deleterious effects 500 hours exposure.

### Freeze-Thaw Cycle Testing:

(EIMA 101.1; modified ASTM C 67) - No deleterious effects after 70 freeze-thaw cycles on Genesis® base coat.

### Tensile Bond Adhesion Testing:

(EIMA 101.03; modified ASTM C 297) - Adhesion test results in psi with finishes on Genesis before and after 70 freeze-thaw cycles. SP NT: 26 psi before exposure, 28 psi after exposure; SPF NT: 31 psi before exposure, 31 psi after exposure.

### Tensile Bond Adhesion Testing:

(EIMA 101.03; modified ASTM C 297) - Adhesion test results in psi with finishes on Genesis before and after 5000 hours exposure. SP NT: 25 psi before exposure, 24 psi after exposure; SPF NT: 25 psi before exposure, 21 psi after exposure.

### Accelerated Weathering:

(ASTM G 155) - No deleterious effects after 5000 hours exposure.

### Flame Spread:

(ASTM E 84) - <25, Class 1.

### Application Procedure

**Job Conditions** - Air and surface temperature for application of finishes must be 40 °F (4 °C) or higher and must remain so for a minimum of 24 hours.

**Temporary Protection** - Shall be provided at all times until the base coat, finish and permanent flashings, sealants, etc. are completed to protect the wall from inclement weather and other sources of damage.

### Surface Preparation

- Surface must be smooth and free of imperfections to ensure satisfactory appearance.
- Interior or exterior surfaces must be above 40 °F (4 °C) and must be clean, dry, structurally sound and free of efflorescence, grease,

oil, form release agents and curing compounds.

- **Dryvit Reinforced Base Coat:** The base coat must dry and cure for a minimum of 24 hours before application of any finish.
- **Concrete:** Shall have cured a minimum of 28 days prior to application of the finishes. If efflorescence, form release agents or curing compounds are present on the concrete surface, the surface shall be thoroughly washed with muriatic acid and flushed to remove residual acid. All projections shall be removed and small voids filled with Dryvit Primus®, Primus® DM, Genesis® or Genesis® DM mixture (see product data sheets for mixing and application). Dryvit Color Prime™ shall be applied to the prepared concrete surface using a roller or brush (see product data sheet for mixing and application) prior to application of the finish.
- **Masonry:** The masonry surface, with joints struck flush, shall be "skim coated" with Primus, Primus DM, Genesis or Genesis DM mixture (see product data sheets for mixing and application) to produce a smooth, level surface.
- **Stucco:** Dryvit Color Prime, Color Prime W™ or Primer with Sand™ shall be applied over the cured brown coat surface using a roller or brush (see product data sheet for mixing and application) prior to applying the finish. If additives are present in the stucco, a test patch shall be made and bond strength checked prior to application.

**Mixing** - Some settling of the finish may occur during shipping. Thoroughly mix the finish with a "Twister" paddle or equivalent mixing blade powered by a 1/2 in (12.7 mm) drill, 450-500 rpm, until a uniform workable consistency is attained.

**Application** - Using a stainless steel trowel, roughly apply an even coat of the finish to a thickness slightly thicker than the largest aggregate size. Then pull across the rough application coat using a

horizontal trowel motion and develop a uniform thickness no greater than the largest aggregate of the material.

**Clean Up** - Clean tools with water while the finishes are still wet.

**Maintenance** - All Dryvit products are designed to require minimal maintenance. However, as with all building products, depending on location, some cleaning may be required. See Dryvit publication DS152 on cleaning and recoating.

#### **Storage**

Finishes must be stored at 40 °F (4 °C) and a maximum of 100 °F (38 °C) in tightly sealed containers protected from weather and out of direct sunlight.

#### **Cautions and Limitations**

- Avoid applying finish in direct sunlight. Always work on the shady side of the wall or protect the area with appropriate shading material.
- Dryvit finishes must not be used on exposed exterior horizontal surfaces. Minimum slope is 6 in 12, which is 27°. Maximum length of slope is 12 in (305 mm)
- Dryvit finishes shall not be used below grade when applied as the finish for an EIF system.
- Dryvit finishes are not intended for direct-applied, vertical applications over exterior type of gypsum based sheathing board, foam plastic insulation or other type insulation board.

- Finishes shall not be returned into any sealant joint or other areas that will be in direct contact with sealant. Instead a coat of Color Prime or Demandit® Smooth should be applied over the base coat in the joint.

#### **Technical and Field Services**

Available on request.

Dryvit Systems, Inc.  
One Energy Way  
West Warwick, RI 02893  
(800) 556-7752  
[www.dryvit.com](http://www.dryvit.com)

This information conforms to the standard detail recommendations and specifications for the installation of Dryvit Systems, Inc. products as of the date of publication of this document and is presented in good faith. Dryvit Systems, Inc. assumes no liability, expressed or implied, as to the architecture, engineering or workmanship of any project. To ensure that you are using the latest, most complete information, contact Dryvit Systems, Inc.

For more information on [Dryvit Systems](#) or [Continuous Insulation](#), visit these links.



# COMMERCIAL CEMENT PLASTER 2<sup>TM</sup>



Fiberglass Reinforced Portland Cement Plaster  
Applied to Metal or Wood Framed Walls

## Commercial Cement Plaster 2 Installation Details



# TABLE OF CONTENTS

DETAIL	PAGE	NOTE
CCP-2 Cutaway	CCP-2 0.0.01	DRYVIT MAKES NO REPRESENTATION REGARDING CONFORMITY OF ITS SUGGESTIONS TO MODEL BUILDING CODES, ENGINEERING CRITERIA, SPECIFIC APPLICATIONS OR PROJECT LOCATIONS. ALL COMPONENTS INDICATED IN ILLUSTRATIONS, AS WELL AS OTHERS THAT MAY BE REQUIRED FOR THE INTEGRITY OF THE SYSTEM SHALL BE DESIGNED, DETAILED AND ENGINEERED BY REPRESENTATIVES OF THE ARCHITECT, OWNER OR CONTRACTOR TO BE IN CONFORMANCE WITH MODEL CODES, ARCHITECTURAL AND ENGINEERING REQUIREMENTS PERTAINING TO SPECIFIC BUILDING PROJECTS.
Termination at Wood Window	CCP-2 0.0.02	
Termination at Self Flashing Nail-On Window	CCP-2 0.0.03	
Termination at Storefront Window - Jamb	CCP-2 0.0.04	
Termination at Storefront Window - Head + Sill	CCP-2 0.0.05	
Termination at Storefront Window - Setback	CCP-2 0.0.06	
Termination at Concrete Foundation	CCP-2 0.0.07	DRYVIT MAKES NO WARRANTY, EXPRESSED OR IMPLIED, AS TO THE ARCHITECTURAL DESIGN, ENGINEERING, OR WORKMANSHIP OF PROJECTS UTILIZING DRYVIT SYSTEMS OR PRODUCTS.
Outside Corner	CCP-2 0.0.08	
Inside Corner Detail	CCP-2 0.0.09	THE LIABILITIES OF DRYVIT SHALL BE AS STATED IN THE DRYVIT STANDARD WARRANTY. CONTACT DRYVIT FOR A FULL AND COMPLETE COPY OF THIS WARRANTY.
Horizontal Flashing & Expansion Joint	CCP-2 0.0.10	
Termination at Roof	CCP-2 0.0.11	
Termination at Roof/Wall Intersection	CCP-2 0.0.12	
Termination at Parapet/Wall Intersection	CCP-2 0.0.13	
Parapet Flashing	CCP-2 0.0.14	
Soffit With Continuous Vent	CCP-2 0.0.15	
Soffit/Fascia Intersection	CCP-2 0.0.16	
EPS Cornice	CCP-2 0.0.17	
Expansion Joint Intersection	CCP-2 0.0.18	
Horizontal or Vertical Expansion Joint	CCP-2 0.0.19	
Termination at EIFS/Lap Siding	CCP-2 0.0.20	
Two-Piece Horizontal Expansion Joint	CCP-2 0.0.21	
Pipe Railing Attachment	CCP-2 0.0.22	
Hose Bib Penetration	CCP-2 0.0.23	
Sloped Sill	CCP-2 0.0.24	

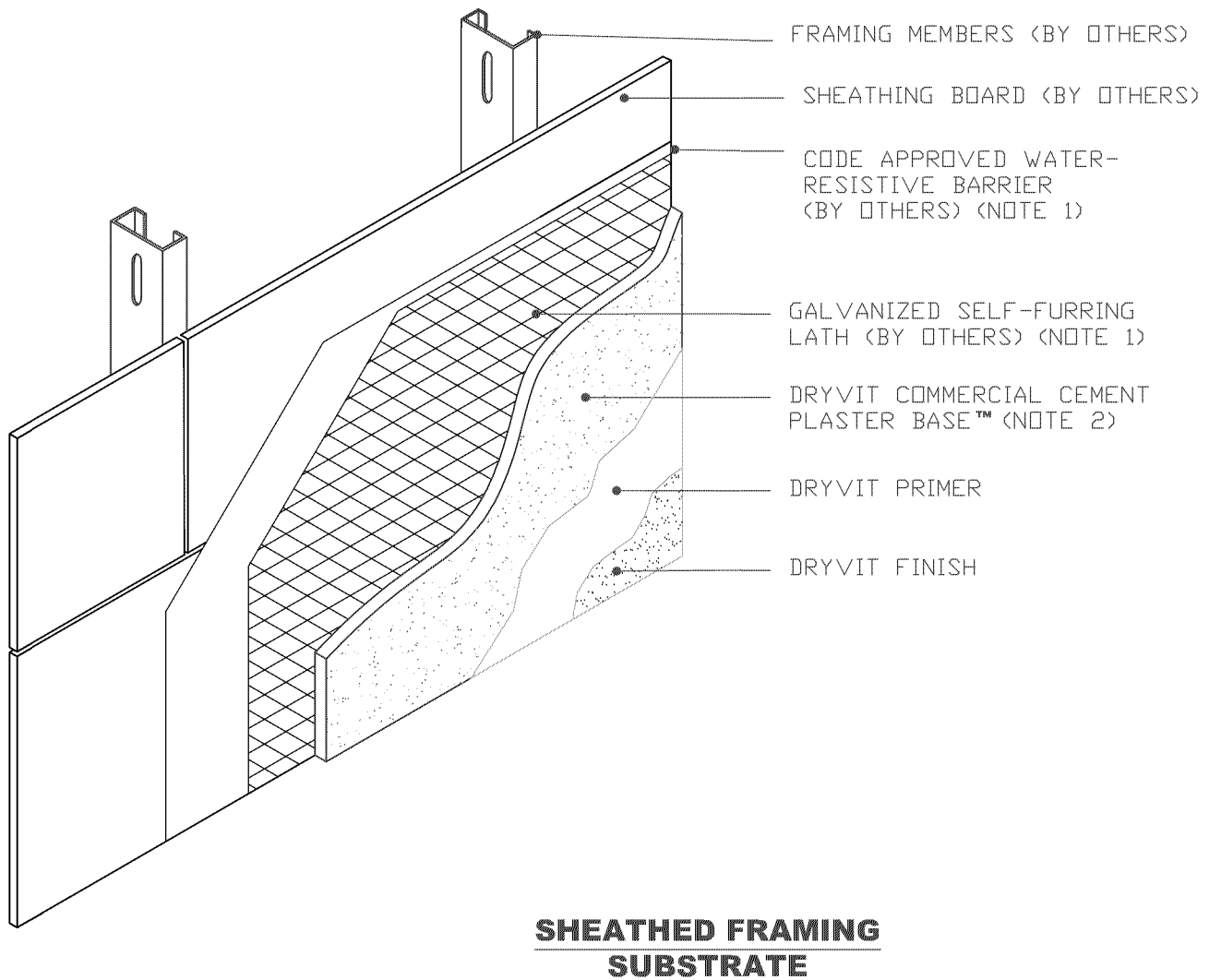
## Commercial Cement Plaster 2™

### NOTE:

1. BUILDING CODES REQUIRE 2 LAYERS OVER WOOD BASED SUBSTRATES. COMPLY WITH ALL LOCAL CODE REQUIREMENTS.
2. OTHER APPROVED SCRATCH AND BROWN COATS MAY BE ACCEPTABLE. CONSULT DRYVIT SYSTEMS, INC. FOR SPECIFICS.

The architecture, engineering, and design of the project using the Dryvit products is the responsibility of the project's design professional. All systems must comply with local building codes and standards. This detail is for general information and guidance only and Dryvit specifically disclaims any liability for the use of this detail and for the architecture, design, engineering or workmanship of any project. The project design professional determines, in its sole discretion, whether this detail or a functionally equivalent detail is best suited for the project. Use of a functionally equivalent detail does not violate Dryvit's warranty. This detail is subject to change without notice. Contact Dryvit to ensure you have the most recent version.





## Commercial Cement Plaster 2™

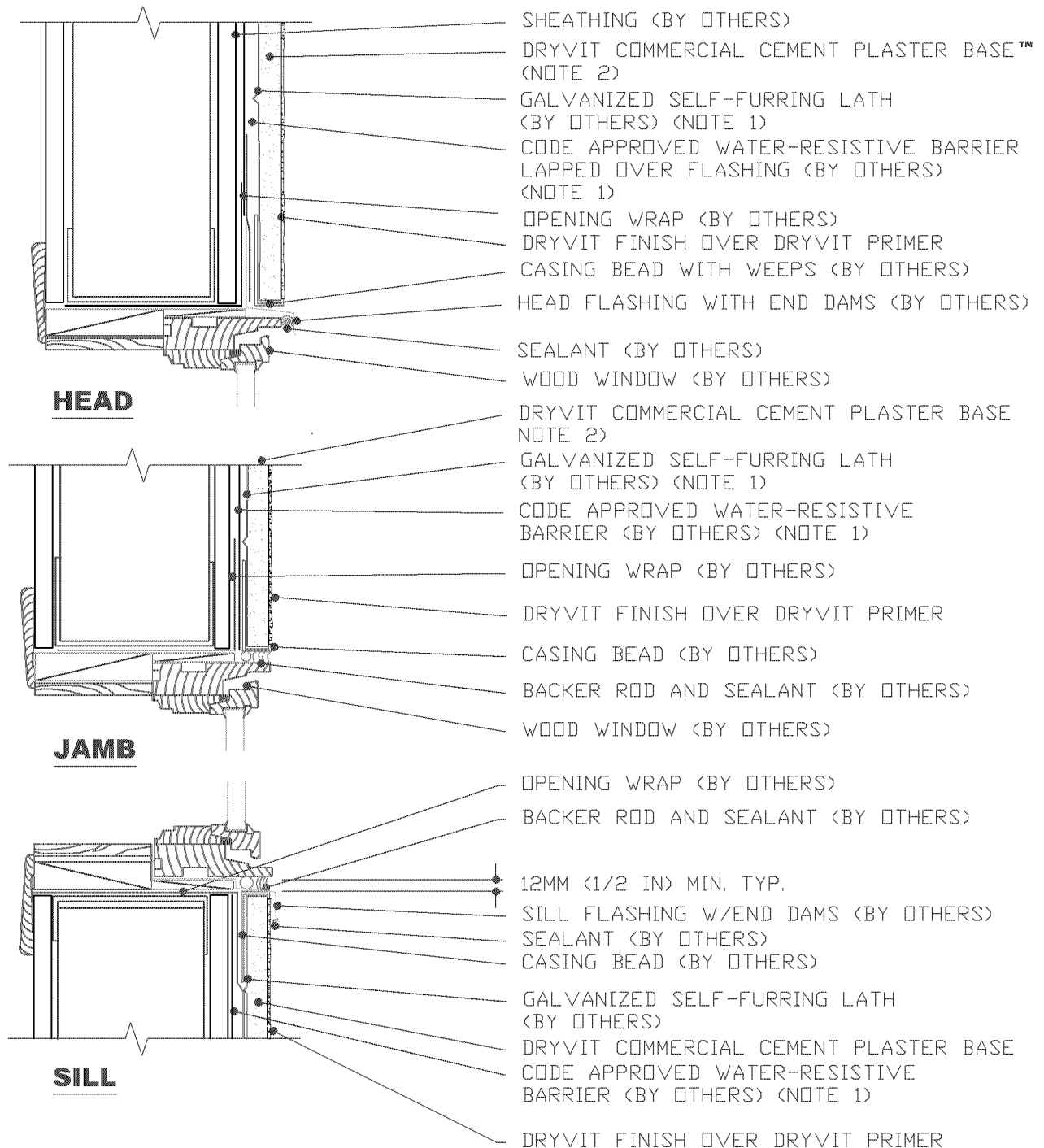
CCP 2 CUTAWAY

### NOTE:

1. BUILDING CODES REQUIRE 2 LAYERS OVER WOOD BASED SUBSTRATES. COMPLY WITH ALL LOCAL CODE REQUIREMENTS.
2. OTHER APPROVED SCRATCH AND BROWN COATS MAY BE ACCEPTABLE. CONSULT DRYVIT SYSTEMS, INC. FOR SPECIFICS.

The architecture, engineering, and design of the project using the Dryvit products is the responsibility of the project's design professional. All systems must comply with local building codes and standards. This detail is for general information and guidance only and Dryvit specifically disclaims any liability for the use of this detail and for the architecture, design, engineering or workmanship of any project. The project design professional determines, in its sole discretion, whether this detail or a functionally equivalent detail is best suited for the project. Use of a functionally equivalent detail does not violate Dryvit's warranty. This detail is subject to change without notice. Contact Dryvit to ensure you have the most recent version.





## Commercial Cement Plaster 2™

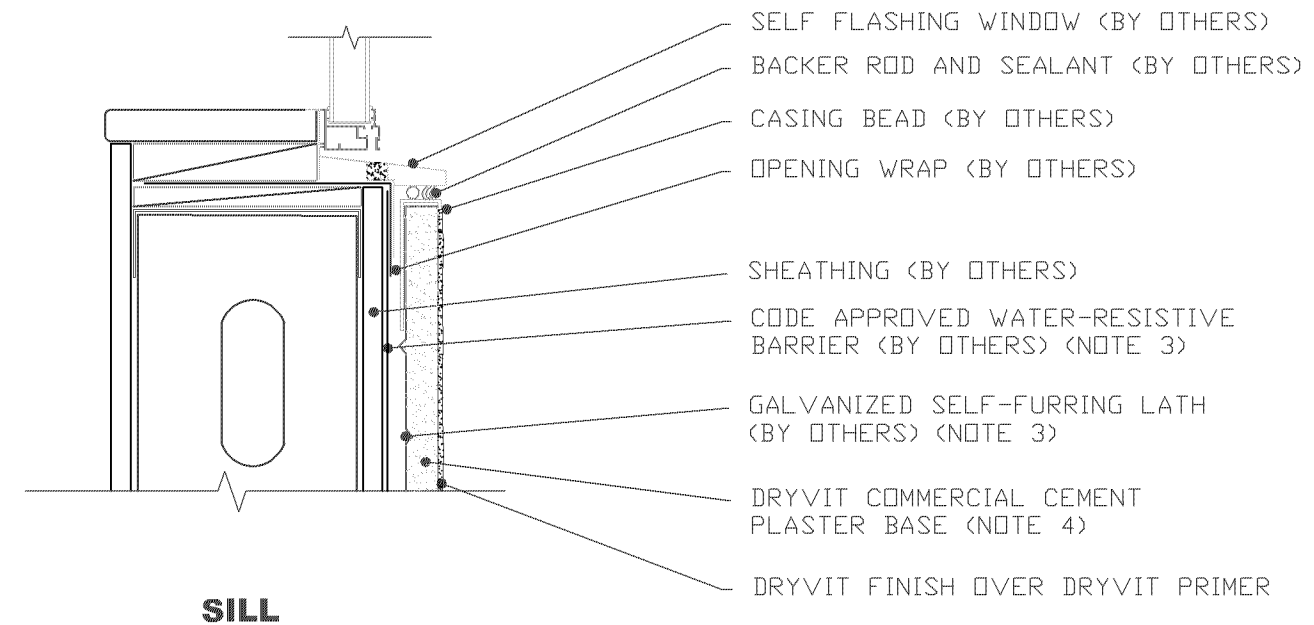
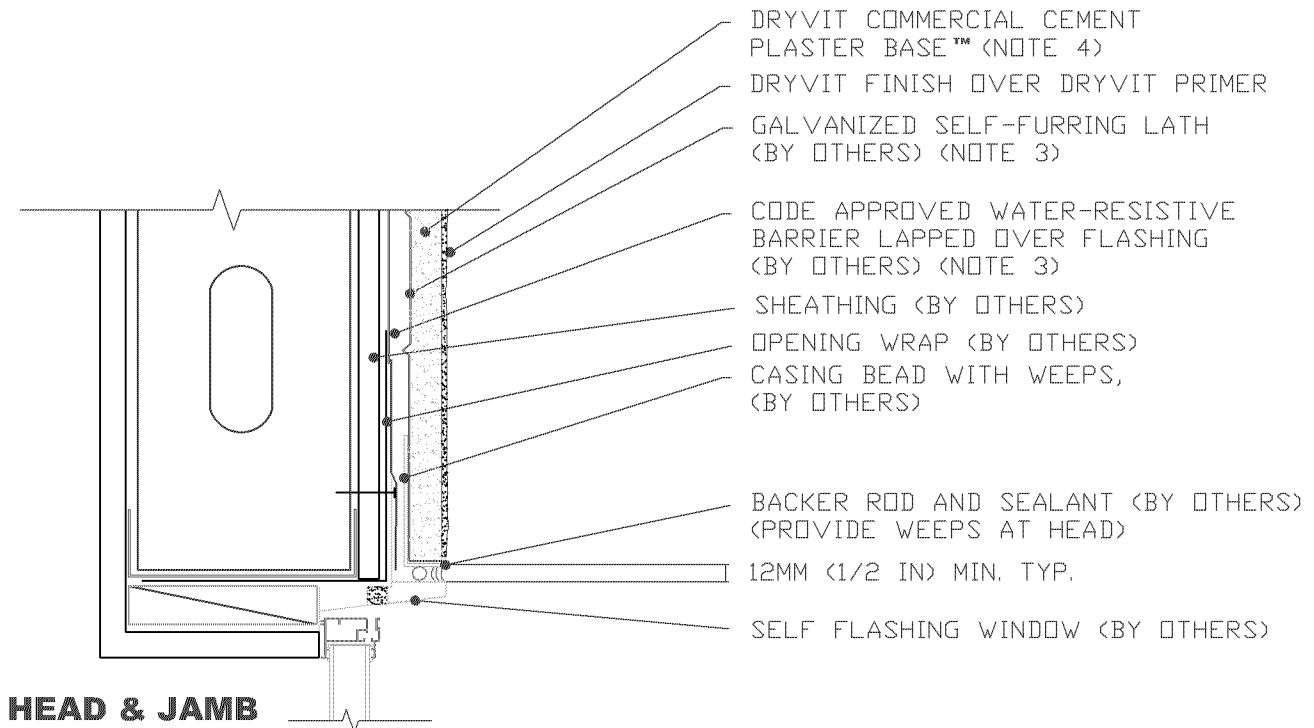
### Termination at Wood Window

#### NOTE:

1. BUILDING CODES REQUIRE 2 LAYERS OVER WOOD BASED SUBSTRATES. COMPLY WITH ALL LOCAL CODE REQUIREMENTS.
2. OTHER APPROVED SCRATCH AND BROWN COATS MAY BE ACCEPTABLE. CONSULT DRYVIT SYSTEMS, INC. FOR SPECIFICS.

The architecture, engineering, and design of the project using the Dryvit products is the responsibility of the project's design professional. All systems must comply with local building codes and standards. This detail is for general information and guidance only and Dryvit specifically disclaims any liability for the use of this detail and for the architecture, design, engineering or workmanship of any project. The project design professional determines, in its sole discretion, whether this detail or a functionally equivalent detail is best suited for the project. Use of a functionally equivalent detail does not violate Dryvit's warranty. This detail is subject to change without notice. Contact Dryvit to ensure you have the most recent version.





## Commercial Cement Plaster 2™

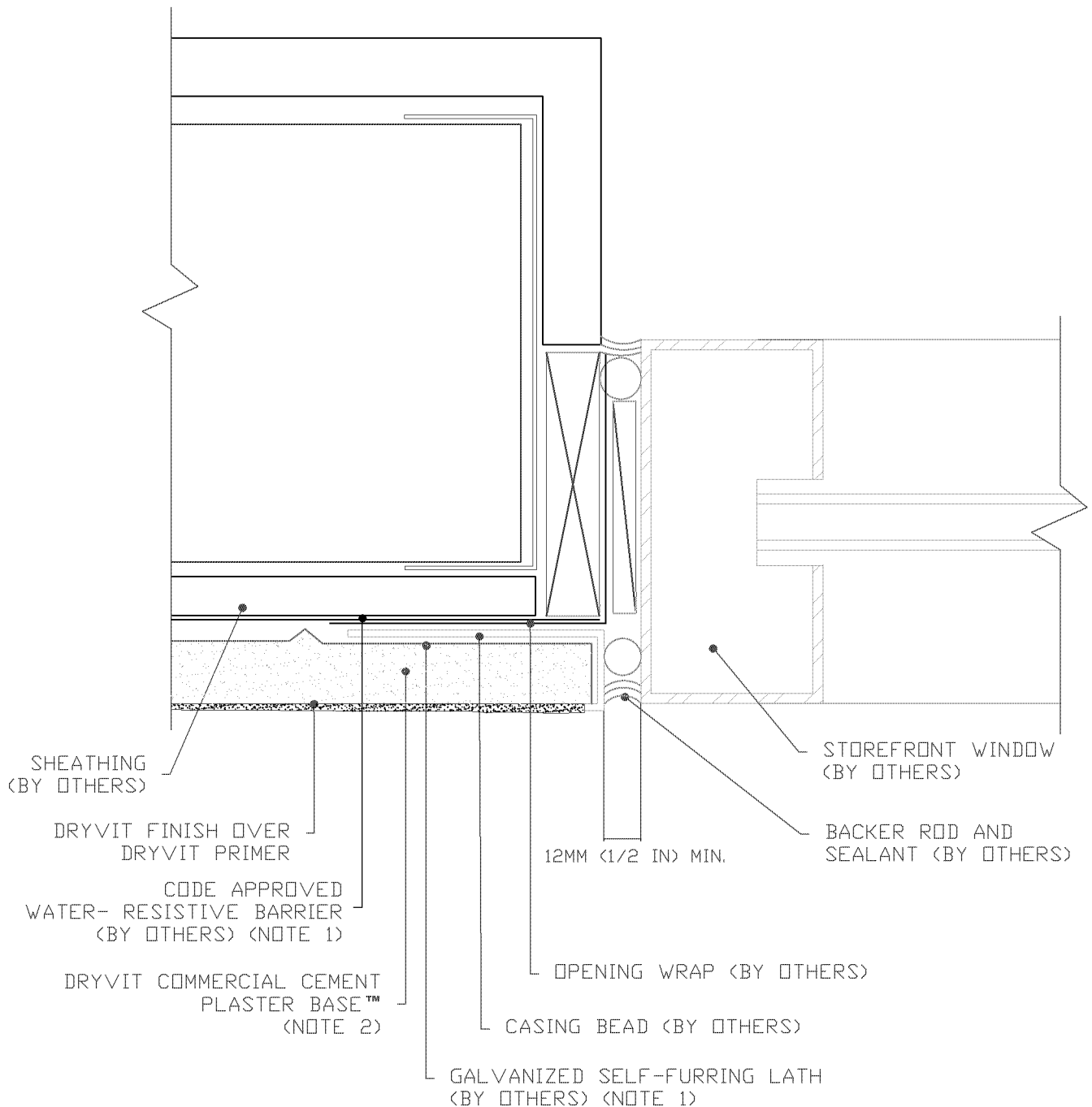
Termination at  
Self Flashing Nail-On Window

### NOTE:

1. ALTERNATE DETAIL AT WINDOW HEAD WOULD INCLUDE METAL FLASHING WITH END DAMS
2. ADDITIONAL FLASHING MAY BE REQUIRED FOR WINDOWS THAT ARE NOT SELF FLASHING
3. BUILDING CODES REQUIRE 2 LAYERS OVER WOOD BASED SUBSTRATES. COMPLY WITH ALL LOCAL CODE REQUIREMENTS.
4. OTHER APPROVED SCRATCH AND BROWN COATS MAY BE ACCEPTABLE. CONSULT DRYVIT SYSTEMS, INC. FOR SPECIFICS.

The architecture, engineering, and design of the project using the Dryvit products is the responsibility of the project's design professional. All systems must comply with local building codes and standards. This detail is for general information and guidance only and Dryvit specifically disclaims any liability for the use of this detail and for the architecture, design, engineering or workmanship of any project. The project design professional determines, in its sole discretion, whether this detail or a functionally equivalent detail is best suited for the project. Use of a functionally equivalent detail does not violate Dryvit's warranty. This detail is subject to change without notice. Contact Dryvit to ensure you have the most recent version.





## Commercial Cement Plaster 2™

Termination at  
Storefront Window-Jamb

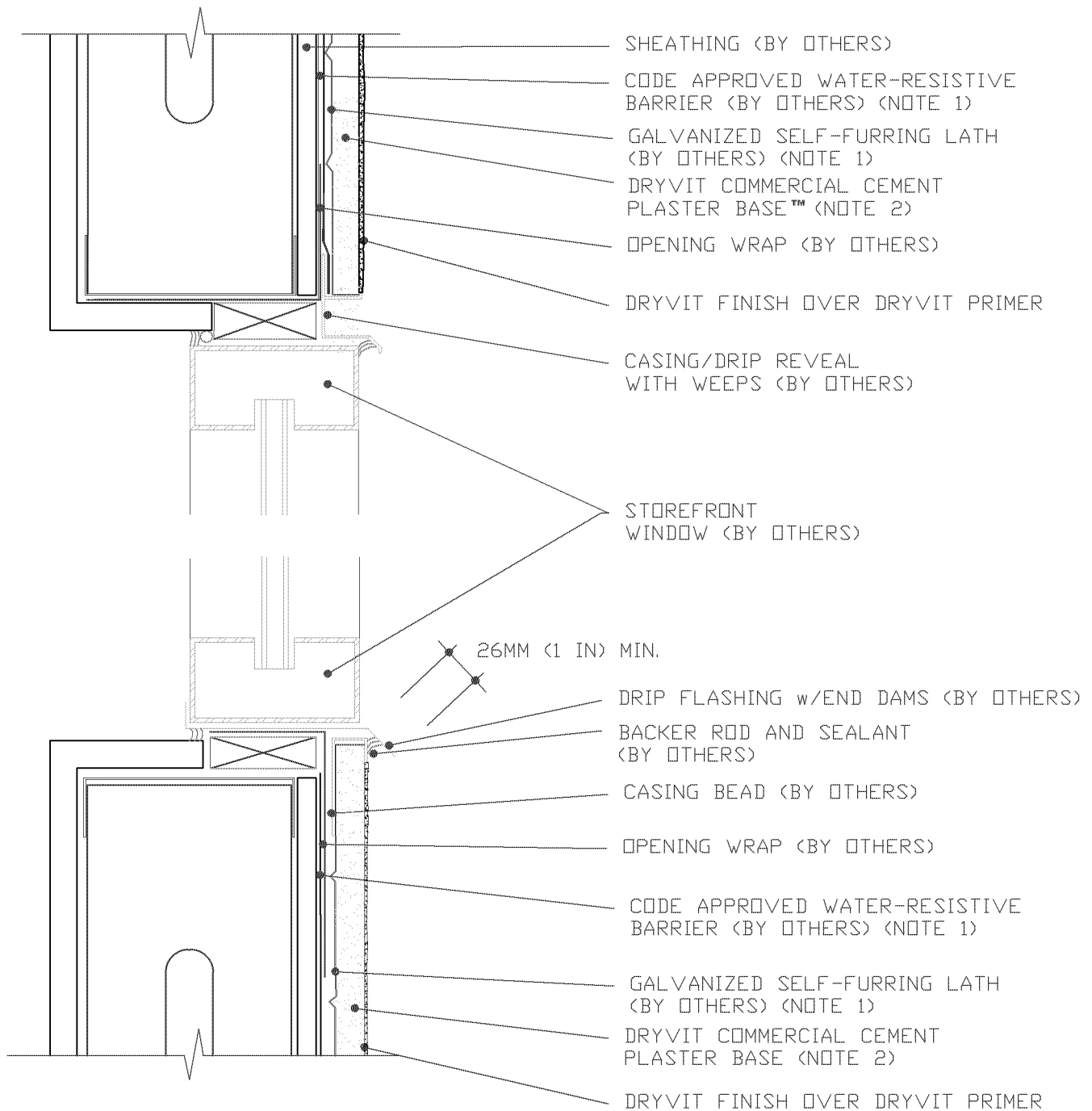
### NOTE:

1. BUILDING CODES REQUIRE 2 LAYERS OVER WOOD BASED SUBSTRATES. COMPLY WITH ALL LOCAL CODE REQUIREMENTS.
2. OTHER APPROVED SCRATCH AND BROWN COATS MAY BE ACCEPTABLE. CONSULT DRYVIT SYSTEMS, INC. FOR SPECIFICS.

The architecture, engineering, and design of the project using the Dryvit products is the responsibility of the project's design professional. All systems must comply with local building codes and standards. This detail is for general information and guidance only and Dryvit specifically disclaims any liability for the use of this detail and for the architecture, design, engineering or workmanship of any project. The project design professional determines, in its sole discretion, whether this detail or a functionally equivalent detail is best suited for the project. Use of a functionally equivalent detail does not violate Dryvit's warranty. This detail is subject to change without notice. Contact Dryvit to ensure you have the most recent version.







## Commercial Cement Plaster 2™

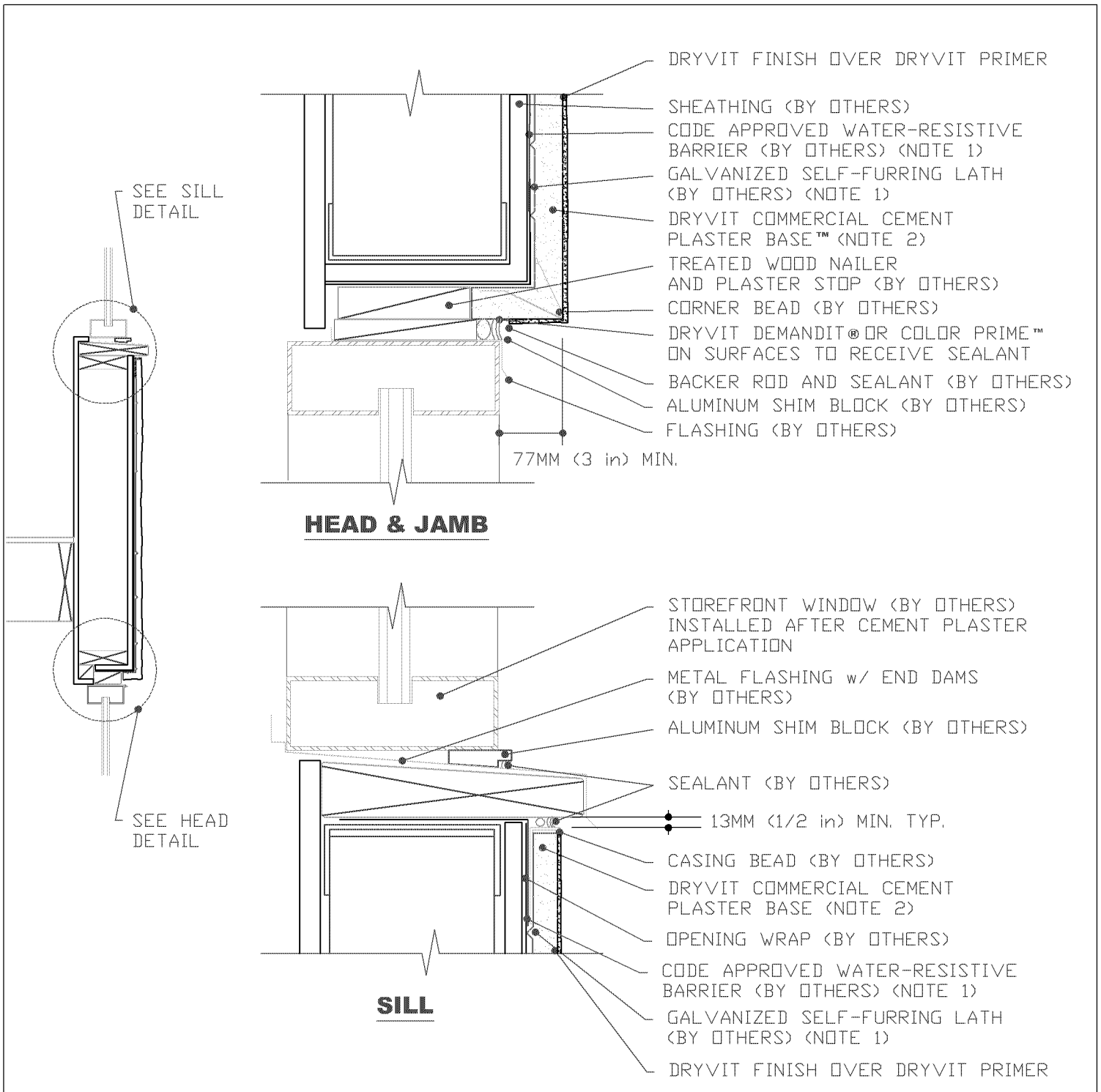
Termination at  
Storefront Window-Head+Sill

### NOTE:

1. BUILDING CODES REQUIRE 2 LAYERS OVER WOOD BASED SUBSTRATES. COMPLY WITH ALL LOCAL CODE REQUIREMENTS.
2. OTHER APPROVED SCRATCH AND BROWN COATS MAY BE ACCEPTABLE. CONSULT DRYVIT SYSTEMS, INC. FOR SPECIFICS.

The architecture, engineering, and design of the project using the Dryvit products is the responsibility of the project's design professional. All systems must comply with local building codes and standards. This detail is for general information and guidance only and Dryvit specifically disclaims any liability for the use of this detail and for the architecture, design, engineering or workmanship of any project. The project design professional determines, in its sole discretion, whether this detail or a functionally equivalent detail is best suited for the project. Use of a functionally equivalent detail does not violate Dryvit's warranty. This detail is subject to change without notice. Contact Dryvit to ensure you have the most recent version.





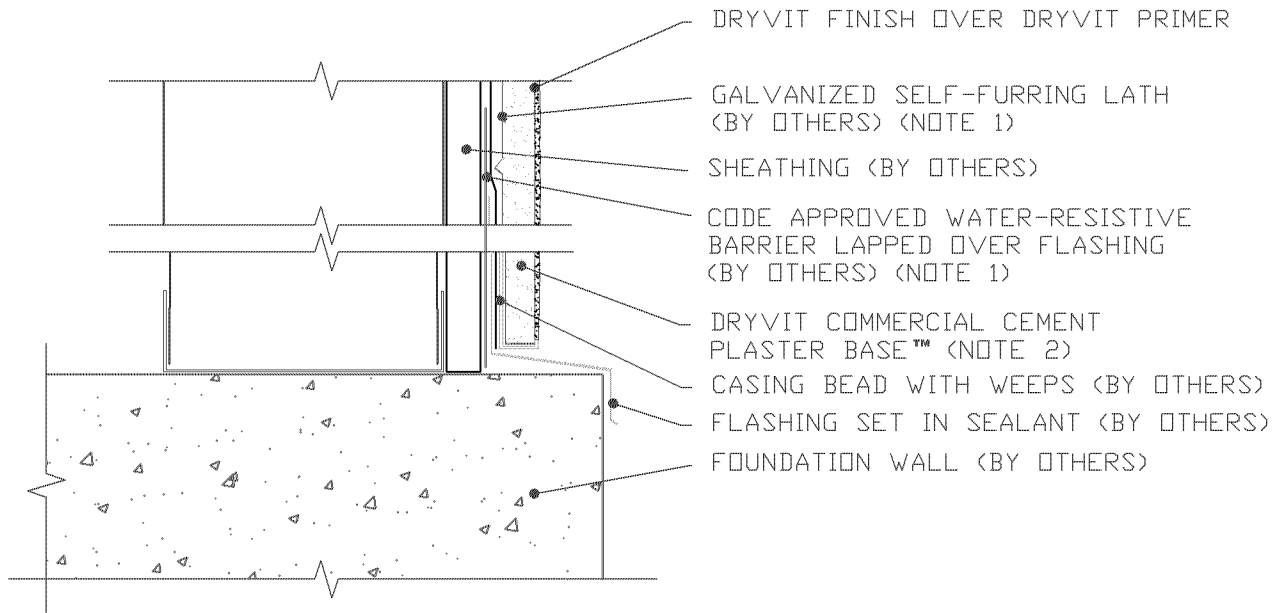
## Commercial Cement Plaster 2™

Termination at  
Storefront Window Setback

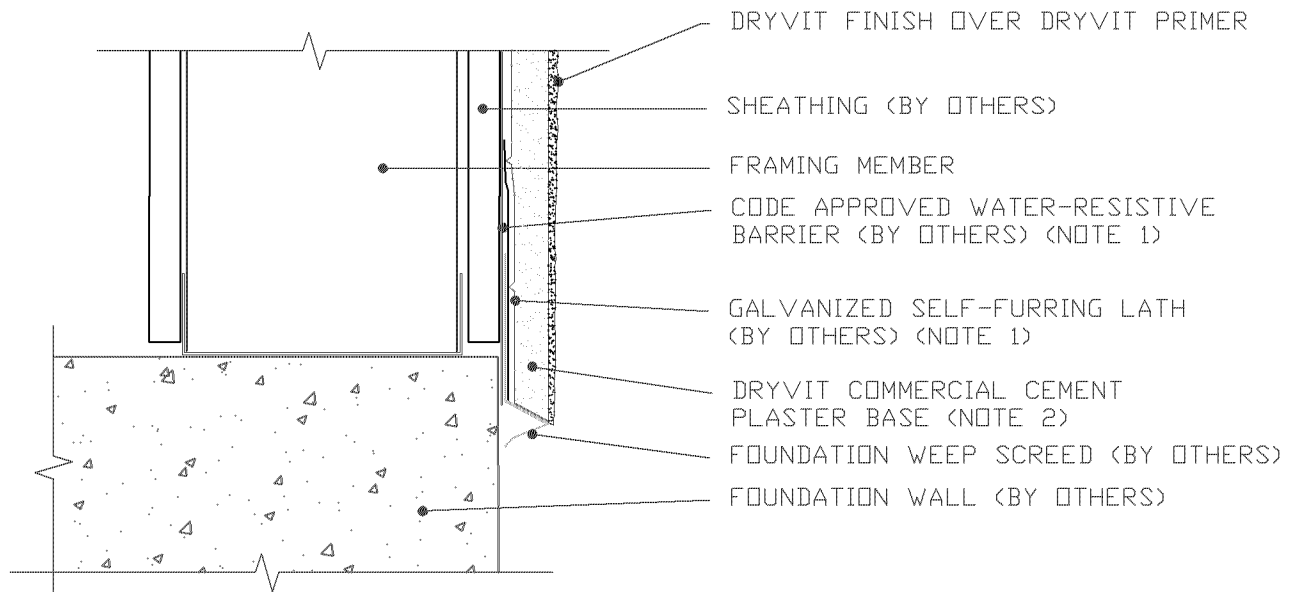
### NOTE:

1. BUILDING CODES REQUIRE 2 LAYERS OVER WOOD BASED SUBSTRATES. COMPLY WITH ALL LOCAL CODE REQUIREMENTS.
2. OTHER APPROVED SCRATCH AND BROWN COATS MAY BE ACCEPTABLE. CONSULT DRYVIT SYSTEMS, INC. FOR SPECIFICS.

The architecture, engineering, and design of the project using the Dryvit products is the responsibility of the project's design professional. All systems must comply with local building codes and standards. This detail is for general information and guidance only and Dryvit specifically disclaims any liability for the use of this detail and for the architecture, design, engineering or workmanship of any project. The project design professional determines, in its sole discretion, whether this detail or a functionally equivalent detail is best suited for the project. Use of a functionally equivalent detail does not violate Dryvit's warranty. This detail is subject to change without notice. Contact Dryvit to ensure you have the most recent version.



**CASING BEAD AT CONCRETE FOUNDATION**



**WEEP SCREED AT CONCRETE FOUNDATION**

## Commercial Cement Plaster 2™

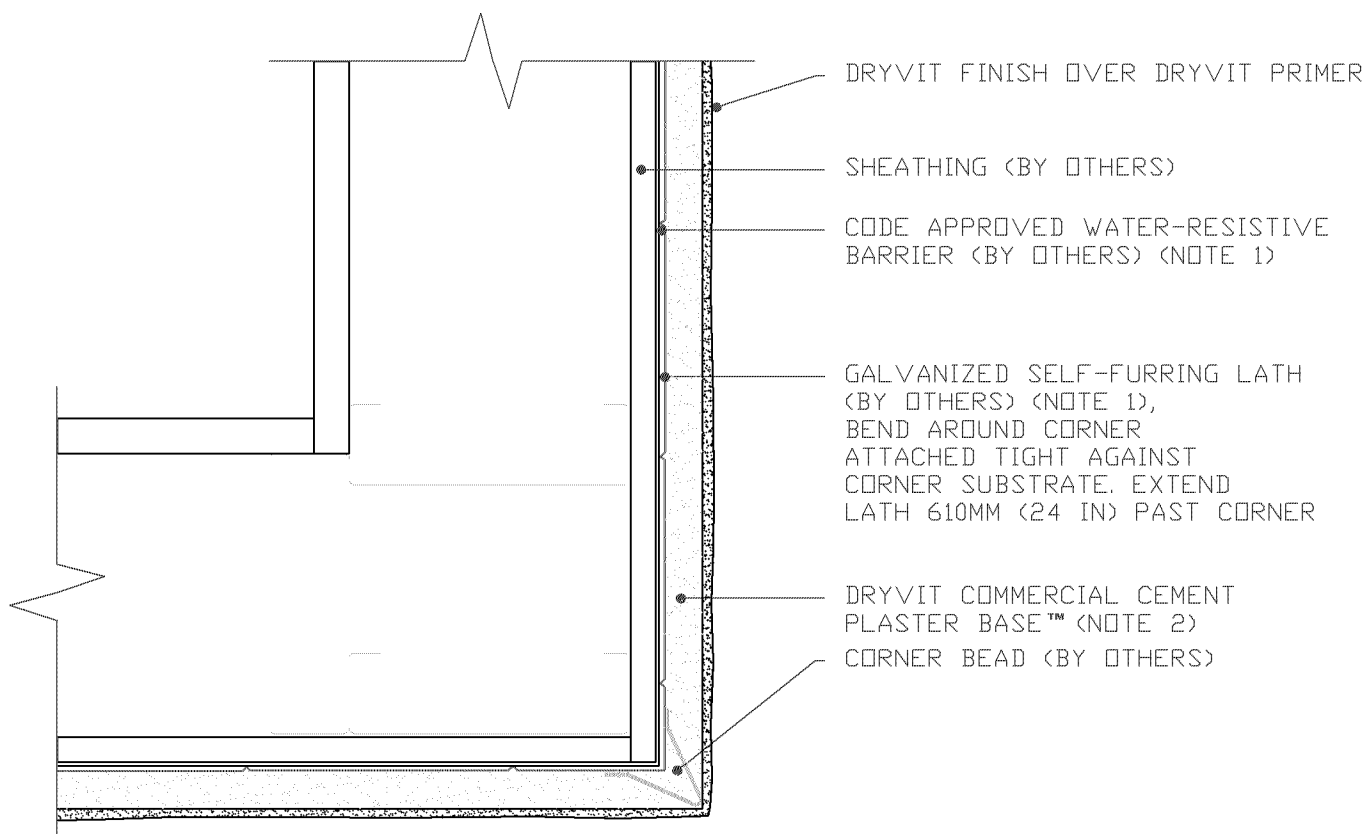
Termination at  
Concrete Foundation

### NOTE:

1. BUILDING CODES REQUIRE 2 LAYERS OVER WOOD BASED SUBSTRATES. COMPLY WITH ALL LOCAL CODE REQUIREMENTS.
2. OTHER APPROVED SCRATCH AND BROWN COATS MAY BE ACCEPTABLE. CONSULT DRYVIT SYSTEMS, INC. FOR SPECIFICS.

The architecture, engineering, and design of the project using the Dryvit products is the responsibility of the project's design professional. All systems must comply with local building codes and standards. This detail is for general information and guidance only and Dryvit specifically disclaims any liability for the use of this detail and for the architecture, design, engineering or workmanship of any project. The project design professional determines, in its sole discretion, whether this detail or a functionally equivalent detail is best suited for the project. Use of a functionally equivalent detail does not violate Dryvit's warranty. This detail is subject to change without notice. Contact Dryvit to ensure you have the most recent version.





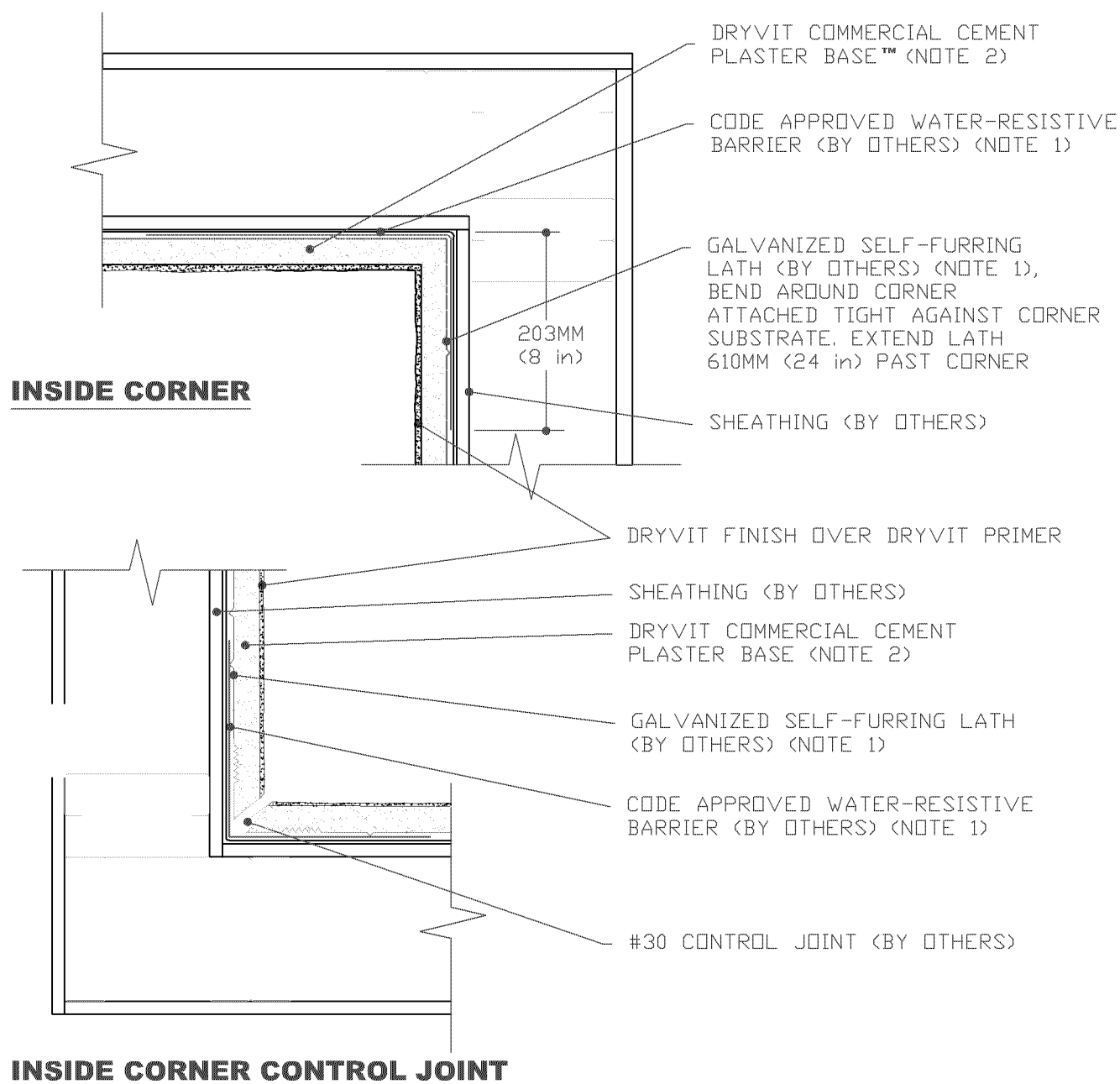
## Commercial Cement Plaster 2™

Outside Corner

### NOTE:

1. BUILDING CODES REQUIRE 2 LAYERS OVER WOOD BASED SUBSTRATES. COMPLY WITH ALL LOCAL CODE REQUIREMENTS.
2. OTHER APPROVED SCRATCH AND BROWN COATS MAY BE ACCEPTABLE. CONSULT DRYVIT SYSTEMS, INC. FOR SPECIFICS.

The architecture, engineering, and design of the project using the Dryvit products is the responsibility of the project's design professional. All systems must comply with local building codes and standards. This detail is for general information and guidance only and Dryvit specifically disclaims any liability for the use of this detail and for the architecture, design, engineering or workmanship of any project. The project design professional determines, in its sole discretion, whether this detail or a functionally equivalent detail is best suited for the project. Use of a functionally equivalent detail does not violate Dryvit's warranty. This detail is subject to change without notice. Contact Dryvit to ensure you have the most recent version.



## Commercial Cement Plaster 2™

### Inside Corner Detail

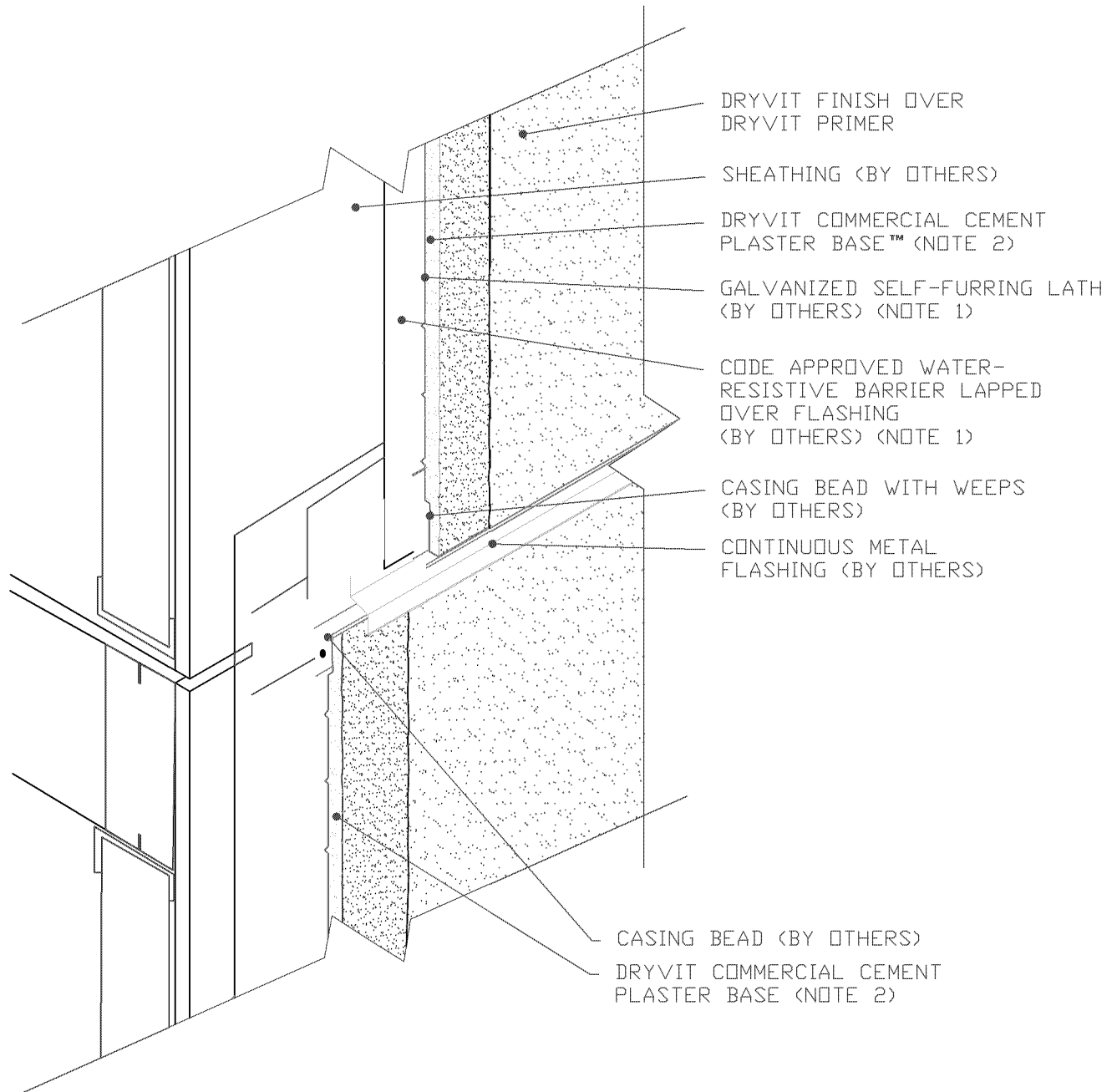
#### NOTE:

1. BUILDING CODES REQUIRE 2 LAYERS OVER WOOD BASED SUBSTRATES. COMPLY WITH ALL LOCAL CODE REQUIREMENTS.
2. OTHER APPROVED SCRATCH AND BROWN COATS MAY BE ACCEPTABLE. CONSULT DRYVIT SYSTEMS, INC. FOR SPECIFICS.

The architecture, engineering, and design of the project using the Dryvit products is the responsibility of the project's design professional. All systems must comply with local building codes and standards. This detail is for general information and guidance only and Dryvit specifically disclaims any liability for the use of this detail and for the architecture, design, engineering or workmanship of any project. The project design professional determines, in its sole discretion, whether this detail or a functionally equivalent detail is best suited for the project. Use of a functionally equivalent detail does not violate Dryvit's warranty. This detail is subject to change without notice. Contact Dryvit to ensure you have the most recent version.







## Commercial Cement Plaster 2™

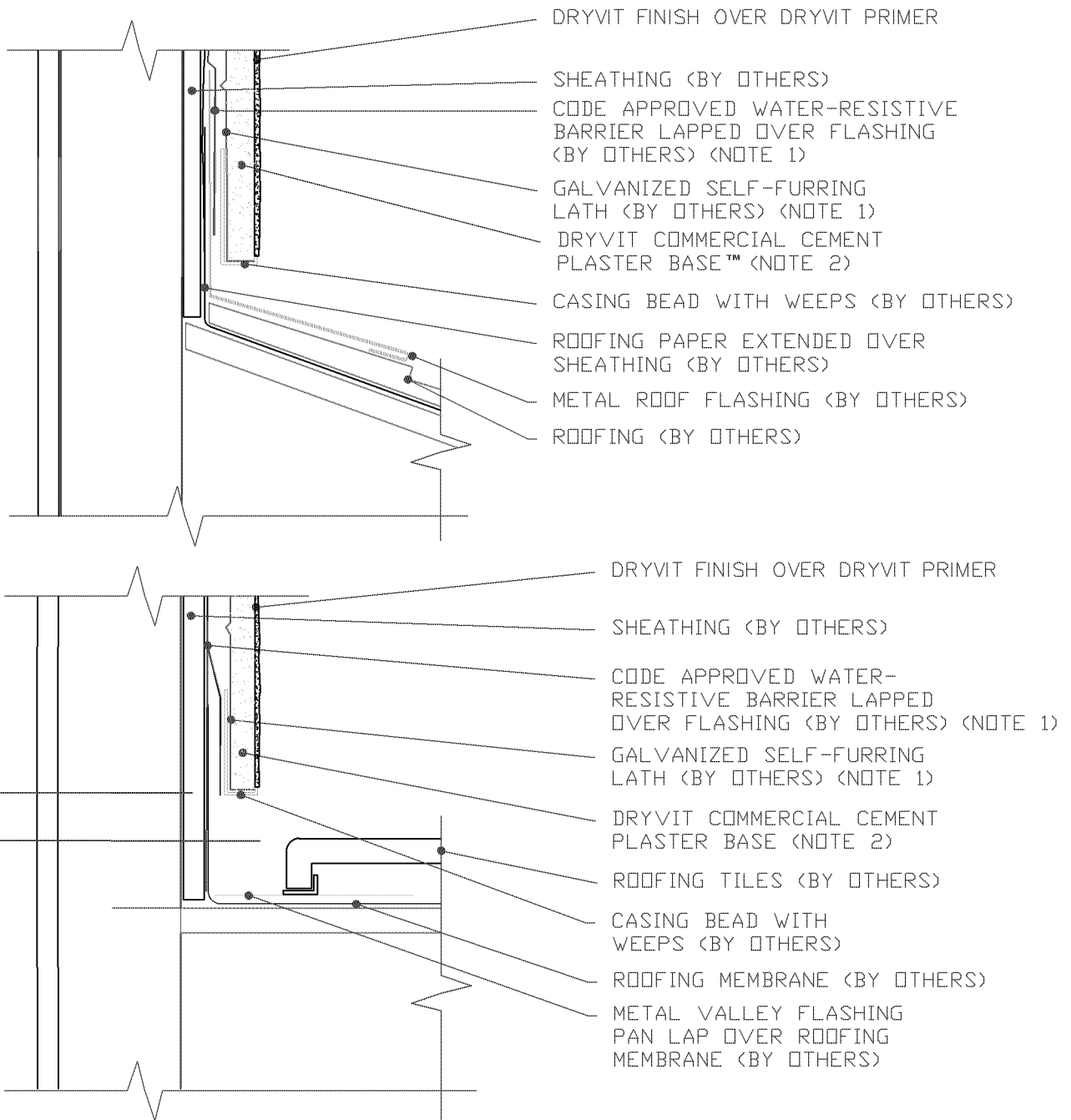
### Horizontal Flashing & Expansion Joint

#### NOTE:

1. BUILDING CODES REQUIRE 2 LAYERS OVER WOOD BASED SUBSTRATES. COMPLY WITH ALL LOCAL CODE REQUIREMENTS.
2. OTHER APPROVED SCRATCH AND BROWN COATS MAY BE ACCEPTABLE. CONSULT DRYVIT SYSTEMS, INC. FOR SPECIFICS.

The architecture, engineering, and design of the project using the Dryvit products is the responsibility of the project's design professional. All systems must comply with local building codes and standards. This detail is for general information and guidance only and Dryvit specifically disclaims any liability for the use of this detail and for the architecture, design, engineering or workmanship of any project. The project design professional determines, in its sole discretion, whether this detail or a functionally equivalent detail is best suited for the project. Use of a functionally equivalent detail does not violate Dryvit's warranty. This detail is subject to change without notice. Contact Dryvit to ensure you have the most recent version.





## Commercial Cement Plaster 2™

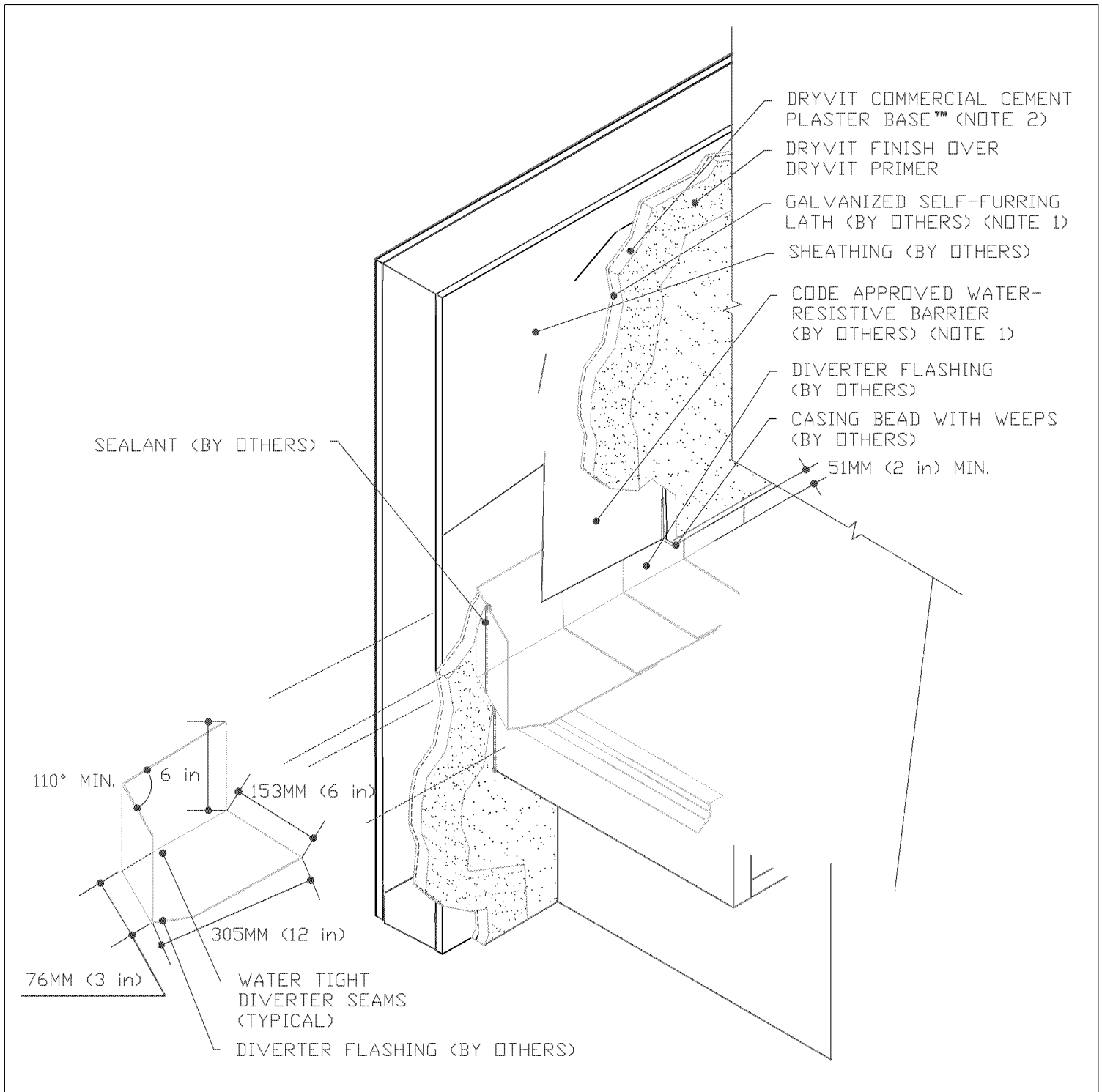
### Termination at Roof

#### NOTE:

1. BUILDING CODES REQUIRE 2 LAYERS OVER WOOD BASED SUBSTRATES. COMPLY WITH ALL LOCAL CODE REQUIREMENTS.
2. OTHER APPROVED SCRATCH AND BROWN COATS MAY BE ACCEPTABLE. CONSULT DRYVIT SYSTEMS, INC. FOR SPECIFICS.

The architecture, engineering, and design of the project using the Dryvit products is the responsibility of the project's design professional. All systems must comply with local building codes and standards. This detail is for general information and guidance only and Dryvit specifically disclaims any liability for the use of this detail and for the architecture, design, engineering or workmanship of any project. The project design professional determines, in its sole discretion, whether this detail or a functionally equivalent detail is best suited for the project. Use of a functionally equivalent detail does not violate Dryvit's warranty. This detail is subject to change without notice. Contact Dryvit to ensure you have the most recent version.





## Commercial Cement Plaster 2™

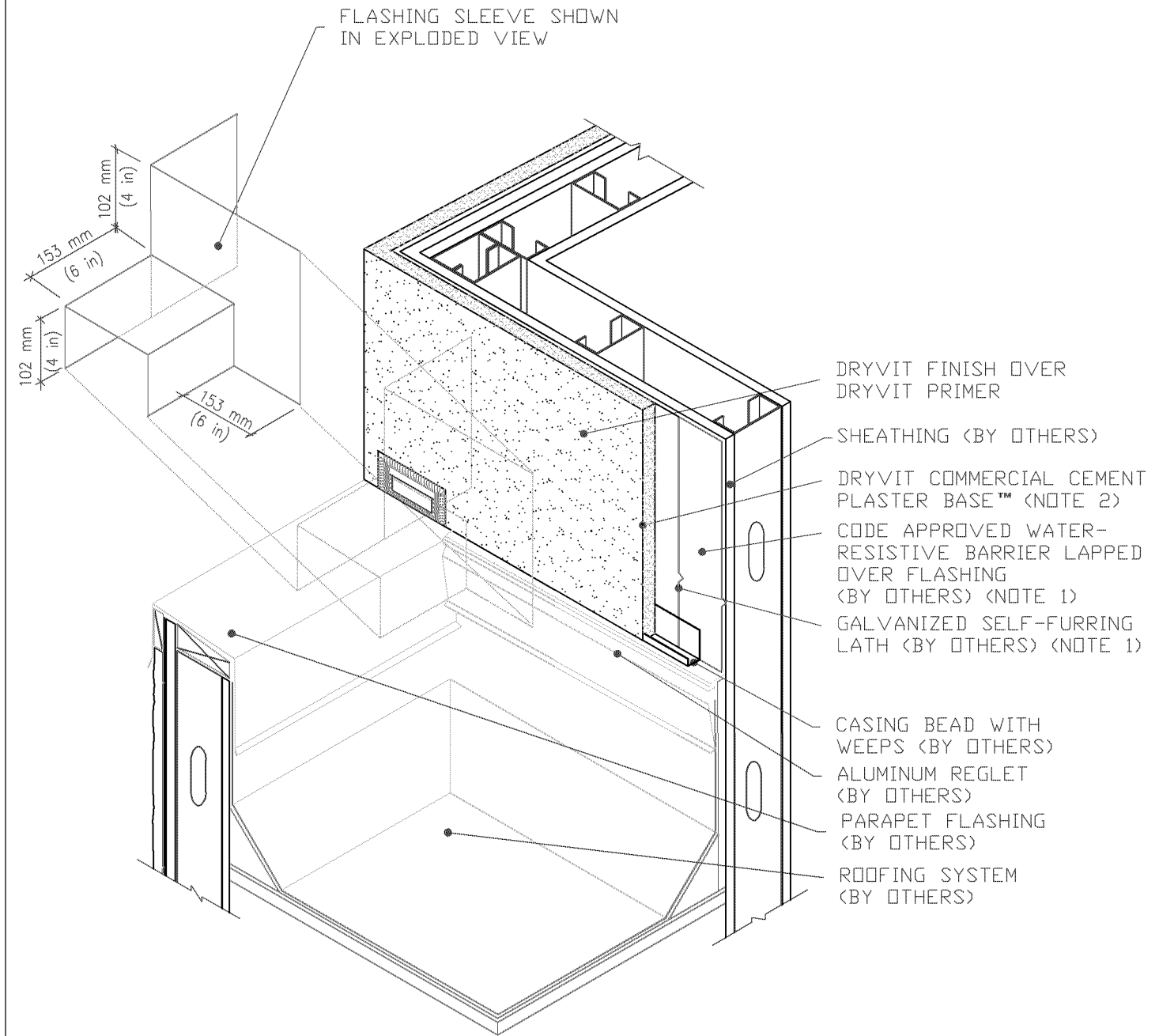
### Termination at Roof/Wall Intersection

#### NOTE:

1. BUILDING CODES REQUIRE 2 LAYERS OVER WOOD BASED SUBSTRATES. COMPLY WITH ALL LOCAL CODE REQUIREMENTS.
2. OTHER APPROVED SCRATCH AND BROWN COATS MAY BE ACCEPTABLE. CONSULT DRYVIT SYSTEMS, INC. FOR SPECIFICS.

The architecture, engineering, and design of the project using the Dryvit products is the responsibility of the project's design professional. All systems must comply with local building codes and standards. This detail is for general information and guidance only and Dryvit specifically disclaims any liability for the use of this detail and for the architecture, design, engineering or workmanship of any project. The project design professional determines, in its sole discretion, whether this detail or a functionally equivalent detail is best suited for the project. Use of a functionally equivalent detail does not violate Dryvit's warranty. This detail is subject to change without notice. Contact Dryvit to ensure you have the most recent version.





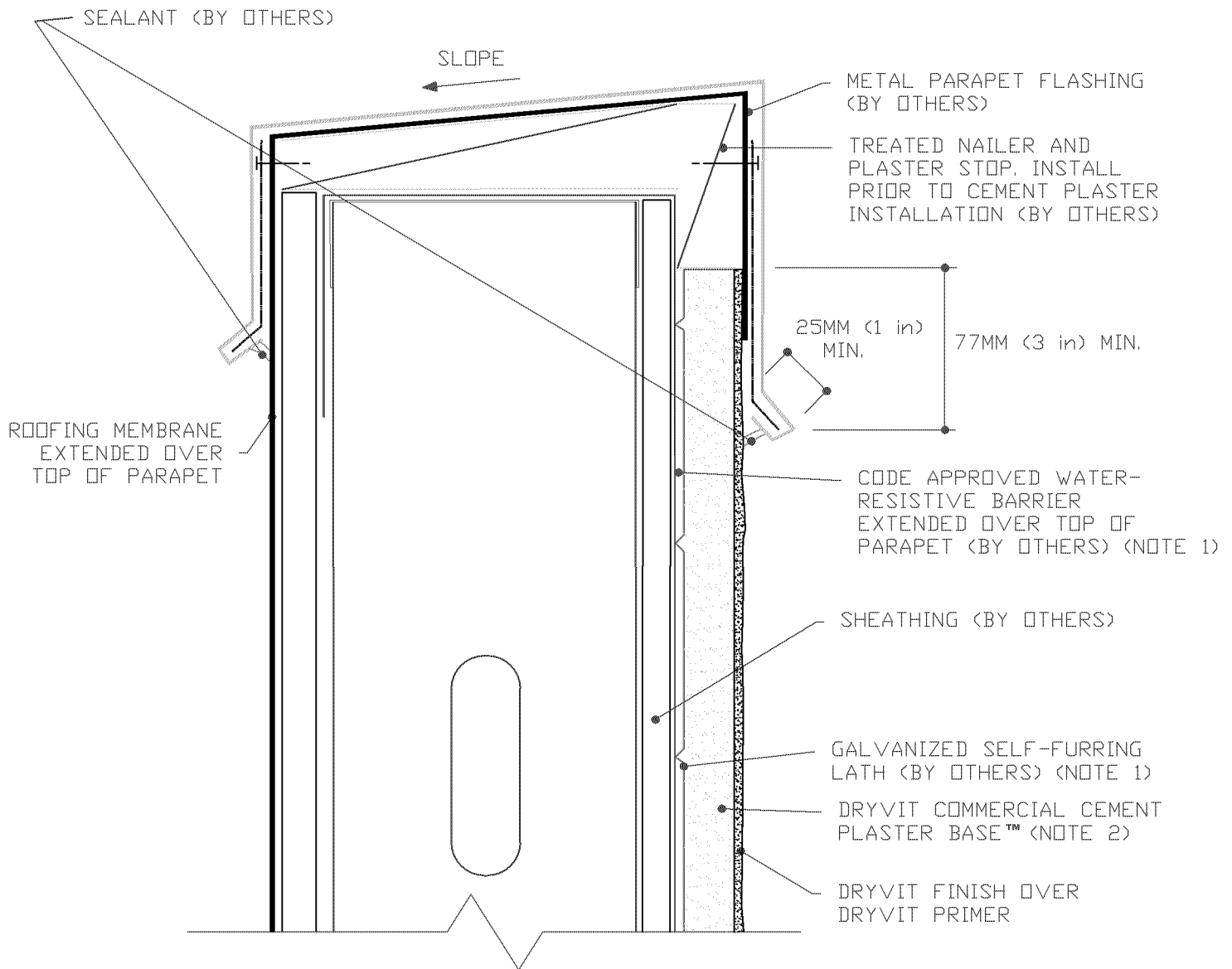
## Commercial Cement Plaster 2™ Termination at Parapet/Wall Intersection

### NOTE:

1. BUILDING CODES REQUIRE 2 LAYERS OVER WOOD BASED SUBSTRATES. COMPLY WITH ALL LOCAL CODE REQUIREMENTS.
2. OTHER APPROVED SCRATCH AND BROWN COATS MAY BE ACCEPTABLE. CONSULT DRYVIT SYSTEMS, INC. FOR SPECIFICS.

The architecture, engineering, and design of the project using the Dryvit products is the responsibility of the project's design professional. All systems must comply with local building codes and standards. This detail is for general information and guidance only and Dryvit specifically disclaims any liability for the use of this detail and for the architecture, design, engineering or workmanship of any project. The project design professional determines, in its sole discretion, whether this detail or a functionally equivalent detail is best suited for the project. Use of a functionally equivalent detail does not violate Dryvit's warranty. This detail is subject to change without notice. Contact Dryvit to ensure you have the most recent version.





## Commercial Cement Plaster 2™

## Parapet Flashing

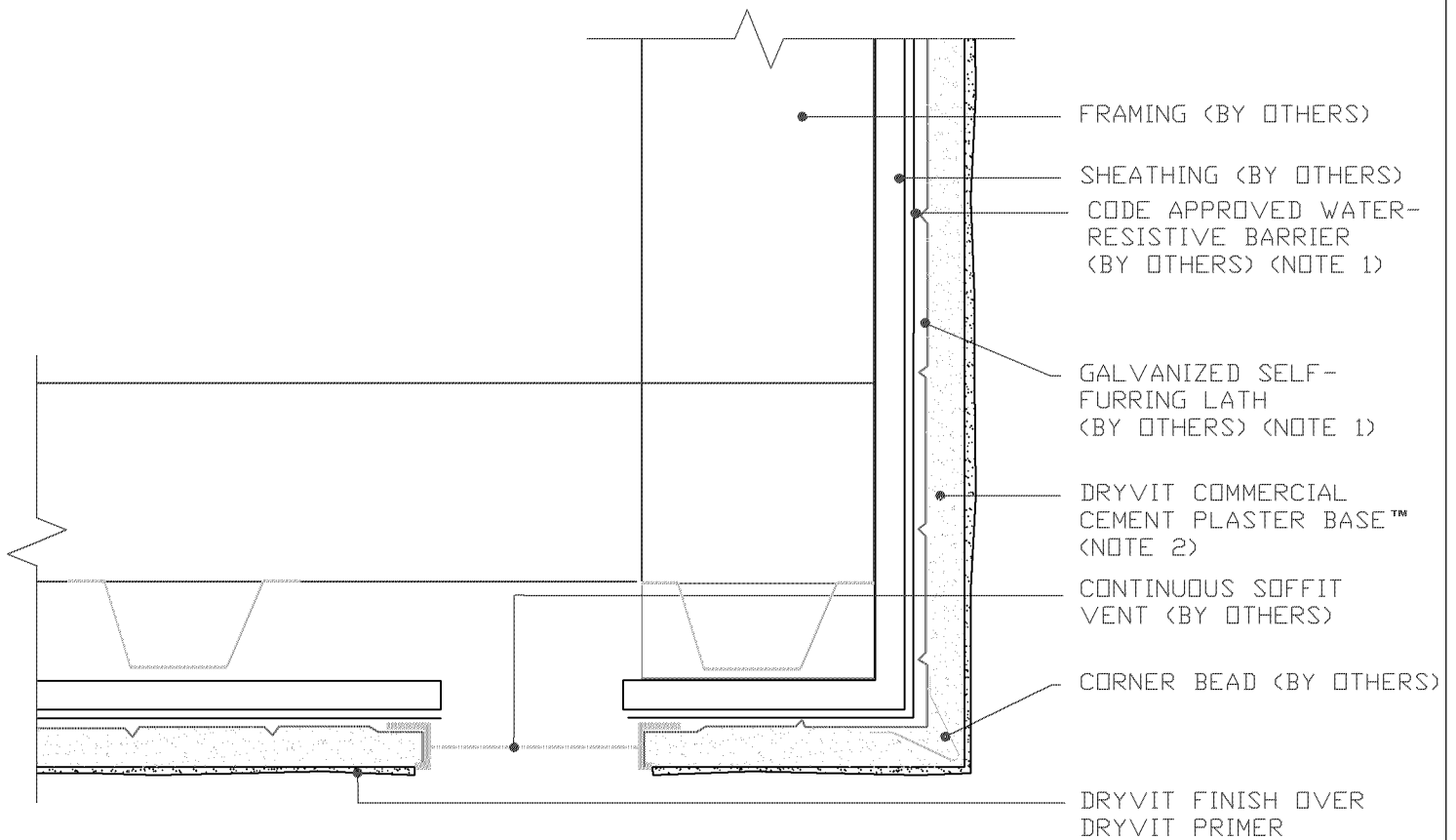
### NOTE:

1. BUILDING CODES REQUIRE 2 LAYERS OVER WOOD BASED SUBSTRATES. COMPLY WITH ALL LOCAL CODE REQUIREMENTS.
2. OTHER APPROVED SCRATCH AND BROWN COATS MAY BE ACCEPTABLE. CONSULT DRYVIT SYSTEMS, INC. FOR SPECIFICS.

The architecture, engineering, and design of the project using the Dryvit products is the responsibility of the project's design professional. All systems must comply with local building codes and standards. This detail is for general information and guidance only and Dryvit specifically disclaims any liability for the use of this detail and for the architecture, design, engineering or workmanship of any project. The project design professional determines, in its sole discretion, whether this detail or a functionally equivalent detail is best suited for the project. Use of a functionally equivalent detail does not violate Dryvit's warranty. This detail is subject to change without notice. Contact Dryvit to ensure you have the most recent version.







## Commercial Cement Plaster 2™

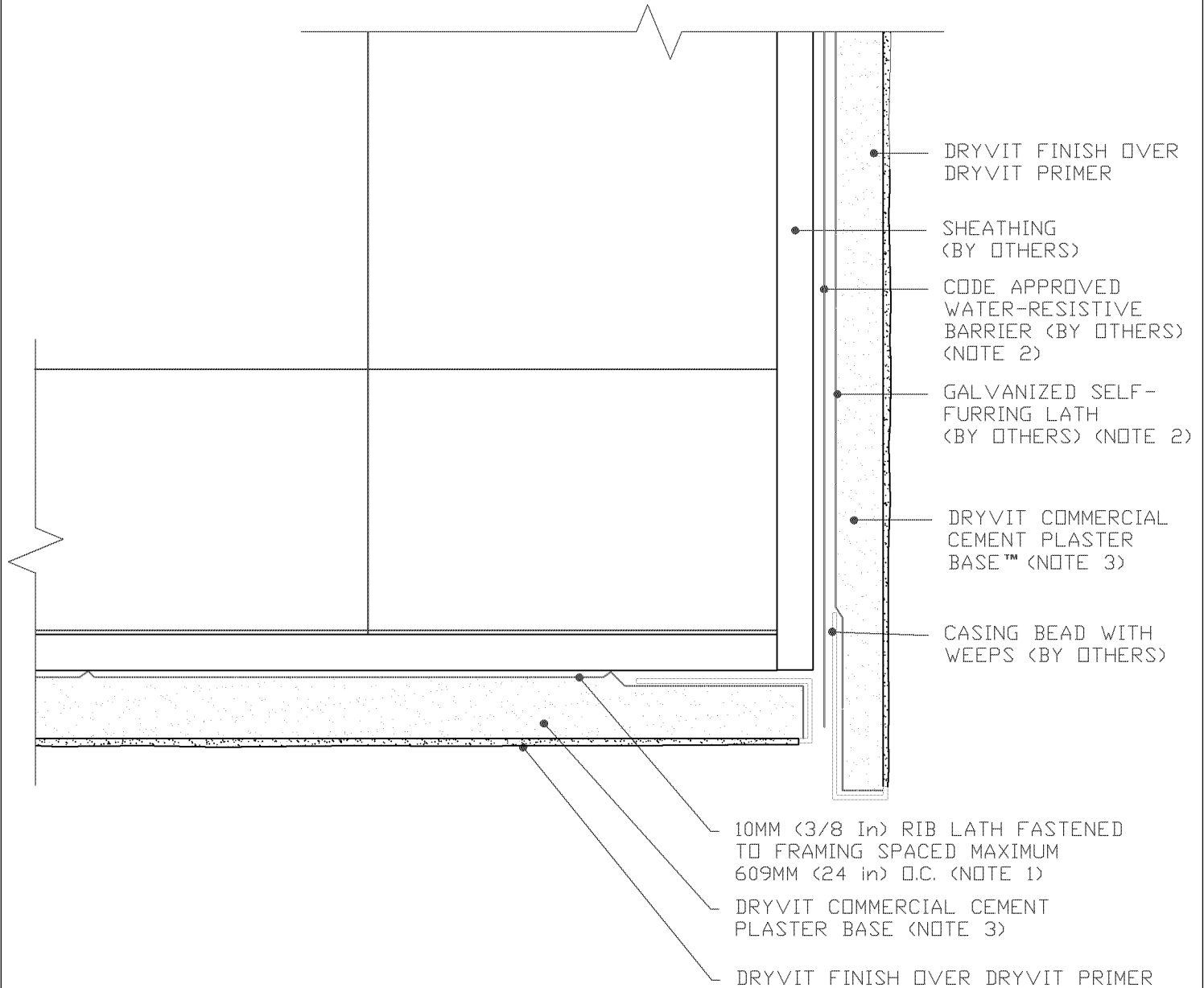
### Soffit with Continuous Vent

#### NOTE:

1. BUILDING CODES REQUIRE 2 LAYERS OVER WOOD BASED SUBSTRATES. COMPLY WITH ALL LOCAL CODE REQUIREMENTS.
2. OTHER APPROVED SCRATCH AND BROWN COATS MAY BE ACCEPTABLE. CONSULT DRYVIT SYSTEMS, INC. FOR SPECIFICS.

The architecture, engineering, and design of the project using the Dryvit products is the responsibility of the project's design professional. All systems must comply with local building codes and standards. This detail is for general information and guidance only and Dryvit specifically disclaims any liability for the use of this detail and for the architecture, design, engineering or workmanship of any project. The project design professional determines, in its sole discretion, whether this detail or a functionally equivalent detail is best suited for the project. Use of a functionally equivalent detail does not violate Dryvit's warranty. This detail is subject to change without notice. Contact Dryvit to ensure you have the most recent version.





## Commercial Cement Plaster 2™

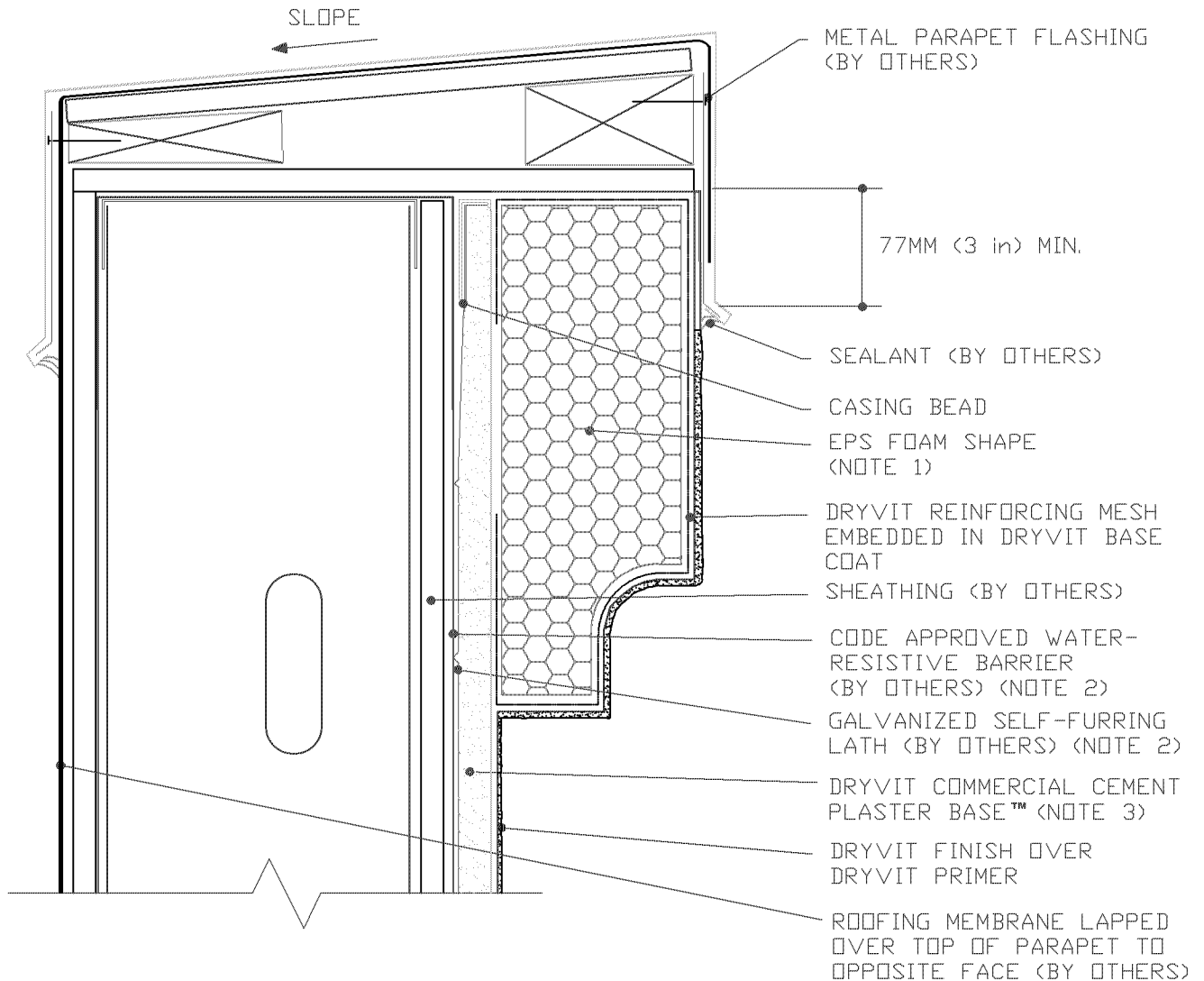
### Soffit/Fascia Intersection

#### NOTE:

1. FRAMING JOIST SPACED AT 609MM (24") REQUIRES 10MM (3/8") RIB LATH PERPENDICULAR TO JOISTS.
2. BUILDING CODES REQUIRE 2 LAYERS OVER WOOD BASED SUBSTRATES. COMPLY WITH ALL LOCAL CODE REQUIREMENTS.
3. OTHER APPROVED SCRATCH AND BROWN COATS MAY BE ACCEPTABLE. CONSULT DRYVIT SYSTEMS, INC. FOR SPECIFICS.

The architecture, engineering, and design of the project using the Dryvit products is the responsibility of the project's design professional. All systems must comply with local building codes and standards. This detail is for general information and guidance only and Dryvit specifically disclaims any liability for the use of this detail and for the architecture, design, engineering or workmanship of any project. The project design professional determines, in its sole discretion, whether this detail or a functionally equivalent detail is best suited for the project. Use of a functionally equivalent detail does not violate Dryvit's warranty. This detail is subject to change without notice. Contact Dryvit to ensure you have the most recent version.





## Commercial Cement Plaster 2™

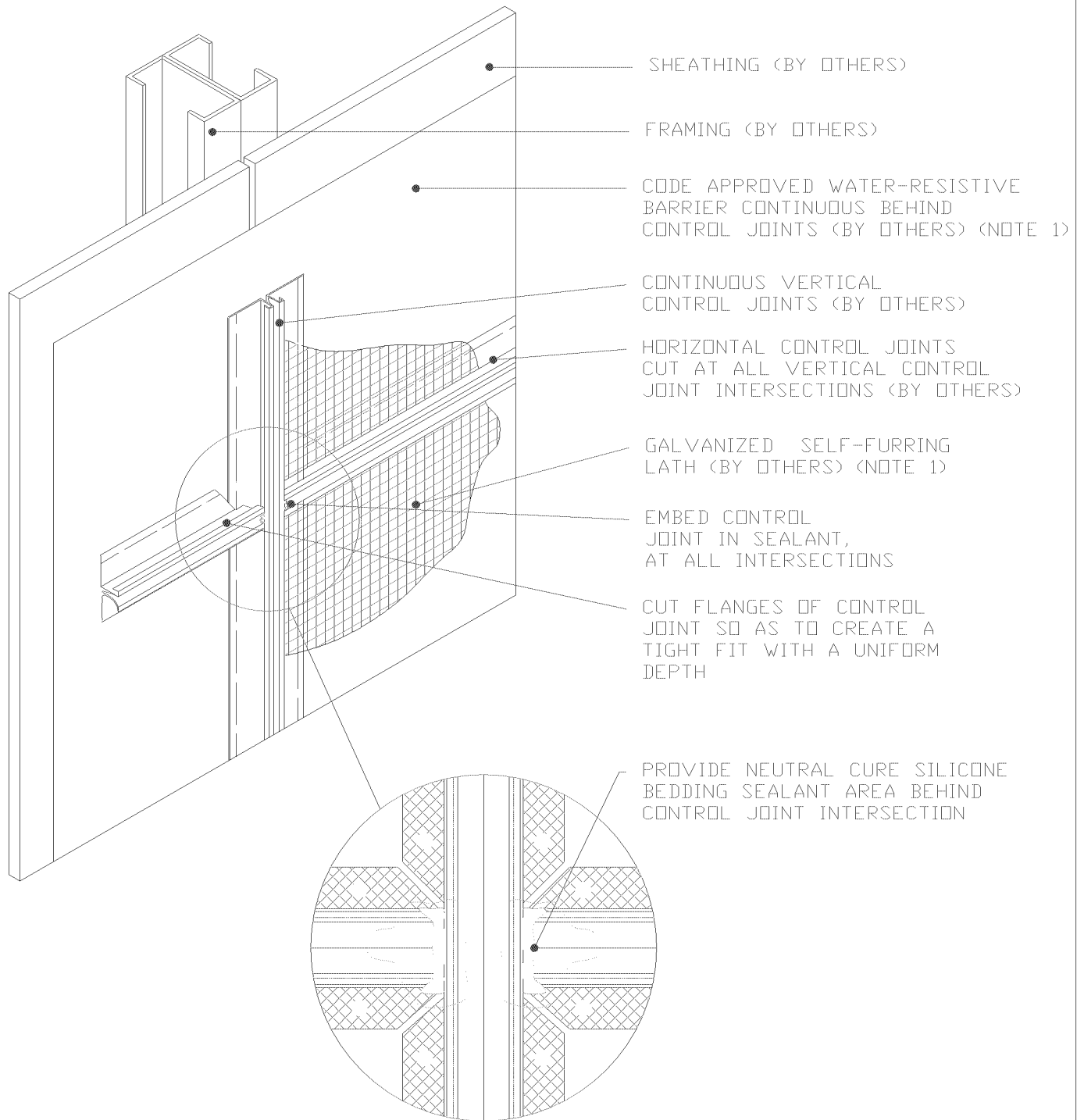
## EPS Cornice

### NOTE:

1. ADHESIVELY ATTACH EPS SHAPE TO CEMENT PLASTER BASE COAT WITH GENESIS OR GENESIS DM BASE COAT.
2. BUILDING CODES REQUIRE 2 LAYERS OVER WOOD BASED SUBSTRATES. COMPLY WITH ALL LOCAL CODE REQUIREMENTS.
3. OTHER APPROVED SCRATCH AND BROWN COATS MAY BE ACCEPTABLE. CONSULT DRYVIT SYSTEMS, INC. FOR SPECIFICS.

The architecture, engineering, and design of the project using the Dryvit products is the responsibility of the project's design professional. All systems must comply with local building codes and standards. This detail is for general information and guidance only and Dryvit specifically disclaims any liability for the use of this detail and for the architecture, design, engineering or workmanship of any project. The project design professional determines, in its sole discretion, whether this detail or a functionally equivalent detail is best suited for the project. Use of a functionally equivalent detail does not violate Dryvit's warranty. This detail is subject to change without notice. Contact Dryvit to ensure you have the most recent version.





## Commercial Cement Plaster 2™

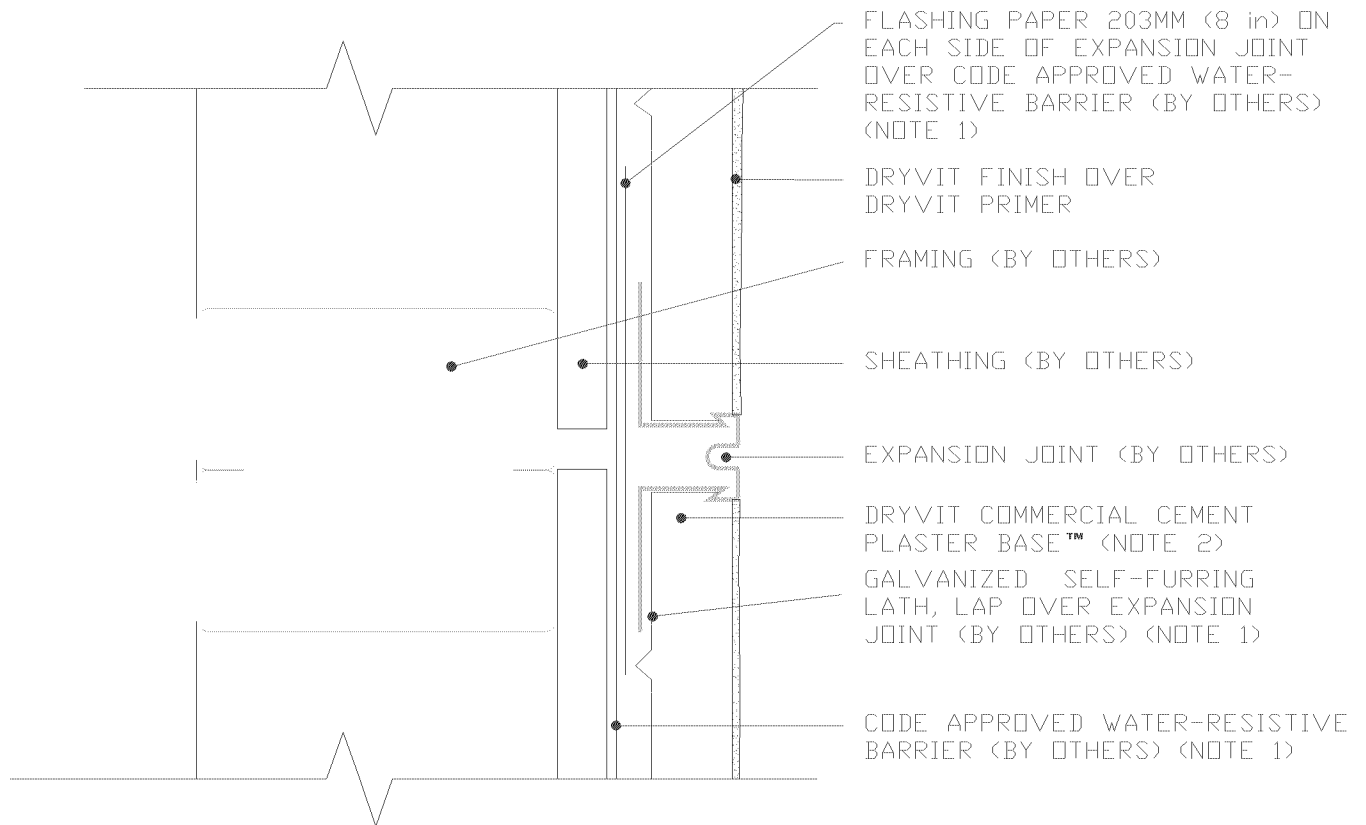
### Expansion Joint Intersection

#### NOTE:

1. BUILDING CODES REQUIRE 2 LAYERS OVER WOOD BASED SUBSTRATES. COMPLY WITH ALL LOCAL CODE REQUIREMENTS.
2. LATH TO LAP OVER CONTROL JOINT FLANGES.
3. FRAMING BACKING IS REQUIRED AT ALL CONTROL JOINTS.

The architecture, engineering, and design of the project using the Dryvit products is the responsibility of the project's design professional. All systems must comply with local building codes and standards. This detail is for general information and guidance only and Dryvit specifically disclaims any liability for the use of this detail and for the architecture, design, engineering or workmanship of any project. The project design professional determines, in its sole discretion, whether this detail or a functionally equivalent detail is best suited for the project. Use of a functionally equivalent detail does not violate Dryvit's warranty. This detail is subject to change without notice. Contact Dryvit to ensure you have the most recent version.





## Commercial Cement Plaster 2™

### Horizontal or Vertical Expansion Joint

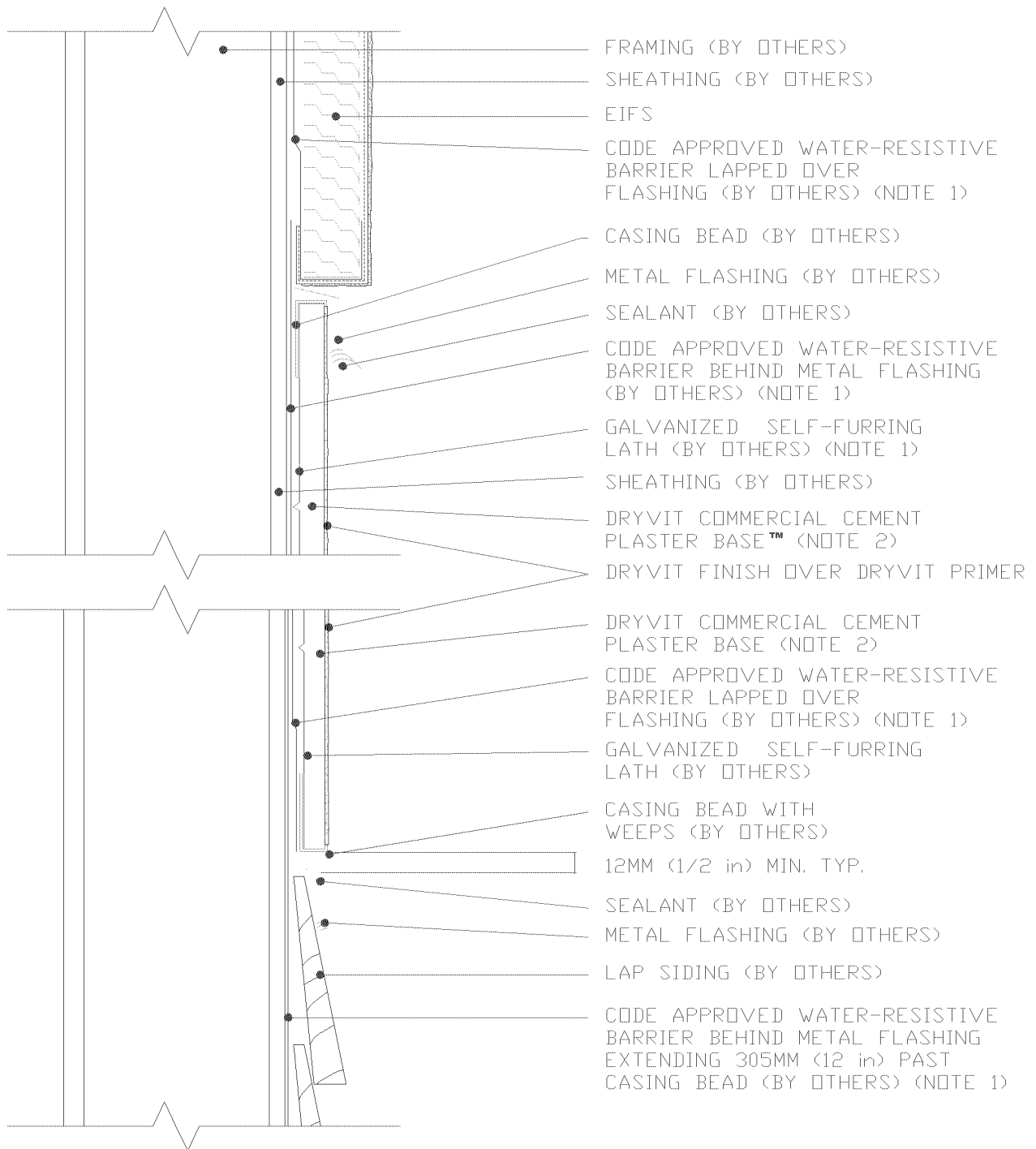
#### NOTE:

1. BUILDING CODES REQUIRE 2 LAYERS OVER WOOD BASED SUBSTRATES. COMPLY WITH ALL LOCAL CODE REQUIREMENTS.
2. OTHER APPROVED SCRATCH AND BROWN COATS MAY BE ACCEPTABLE. CONSULT DRYVIT SYSTEMS, INC. FOR SPECIFICS.

The architecture, engineering, and design of the project using the Dryvit products is the responsibility of the project's design professional. All systems must comply with local building codes and standards. This detail is for general information and guidance only and Dryvit specifically disclaims any liability for the use of this detail and for the architecture, design, engineering or workmanship of any project. The project design professional determines, in its sole discretion, whether this detail or a functionally equivalent detail is best suited for the project. Use of a functionally equivalent detail does not violate Dryvit's warranty. This detail is subject to change without notice. Contact Dryvit to ensure you have the most recent version.







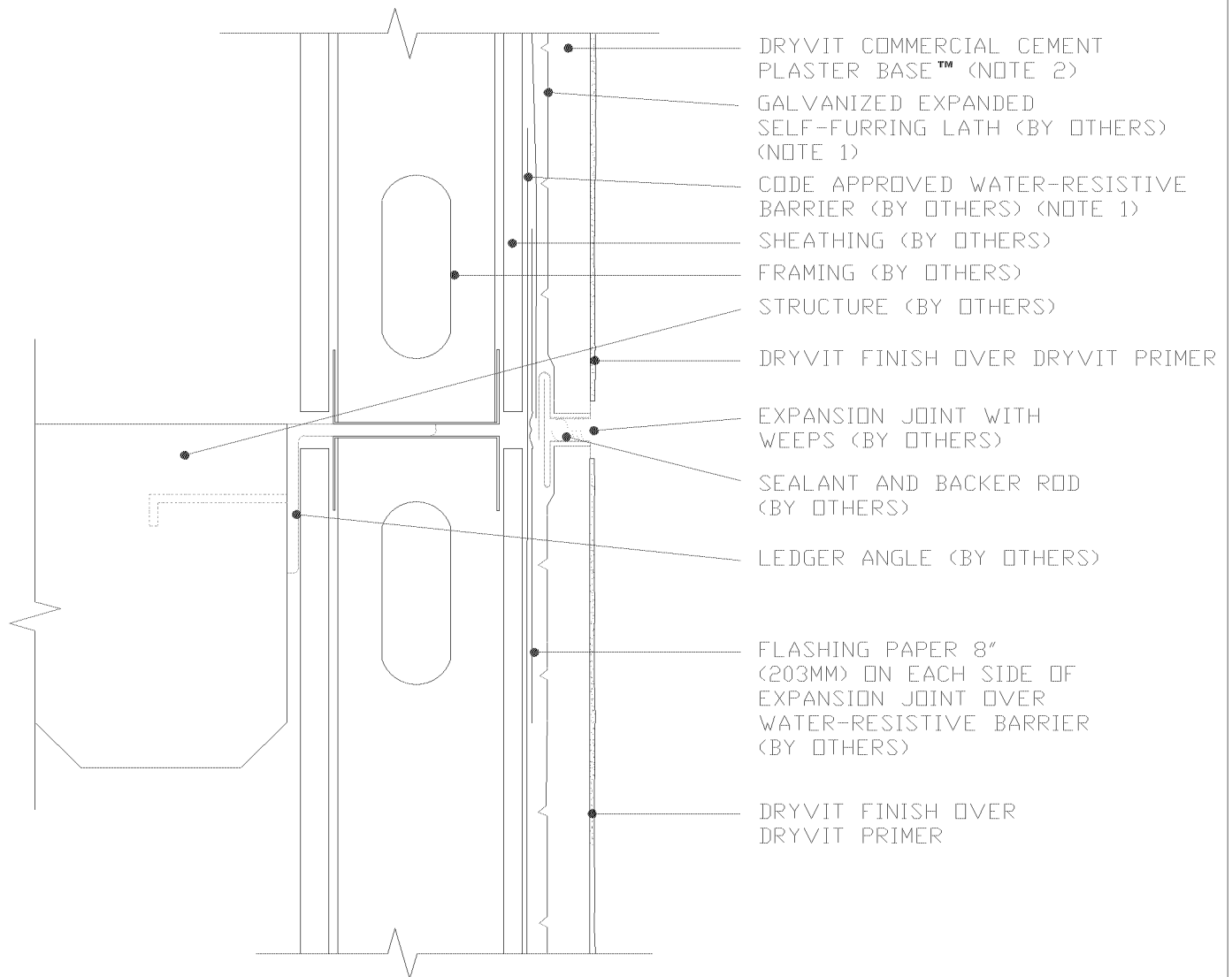
## Commercial Cement Plaster 2™

### Termination at EIFS/Lap Siding

#### NOTE:

1. BUILDING CODES REQUIRE 2 LAYERS OVER WOOD BASED SUBSTRATES. COMPLY WITH ALL LOCAL CODE REQUIREMENTS.
2. OTHER APPROVED SCRATCH AND BROWN COATS MAY BE ACCEPTABLE. CONSULT DRYVIT SYSTEMS, INC. FOR SPECIFICS.

The architecture, engineering, and design of the project using the Dryvit products is the responsibility of the project's design professional. All systems must comply with local building codes and standards. This detail is for general information and guidance only and Dryvit specifically disclaims any liability for the use of this detail and for the architecture, design, engineering or workmanship of any project. The project design professional determines, in its sole discretion, whether this detail or a functionally equivalent detail is best suited for the project. Use of a functionally equivalent detail does not violate Dryvit's warranty. This detail is subject to change without notice. Contact Dryvit to ensure you have the most recent version.



## Commercial Cement Plaster 2™

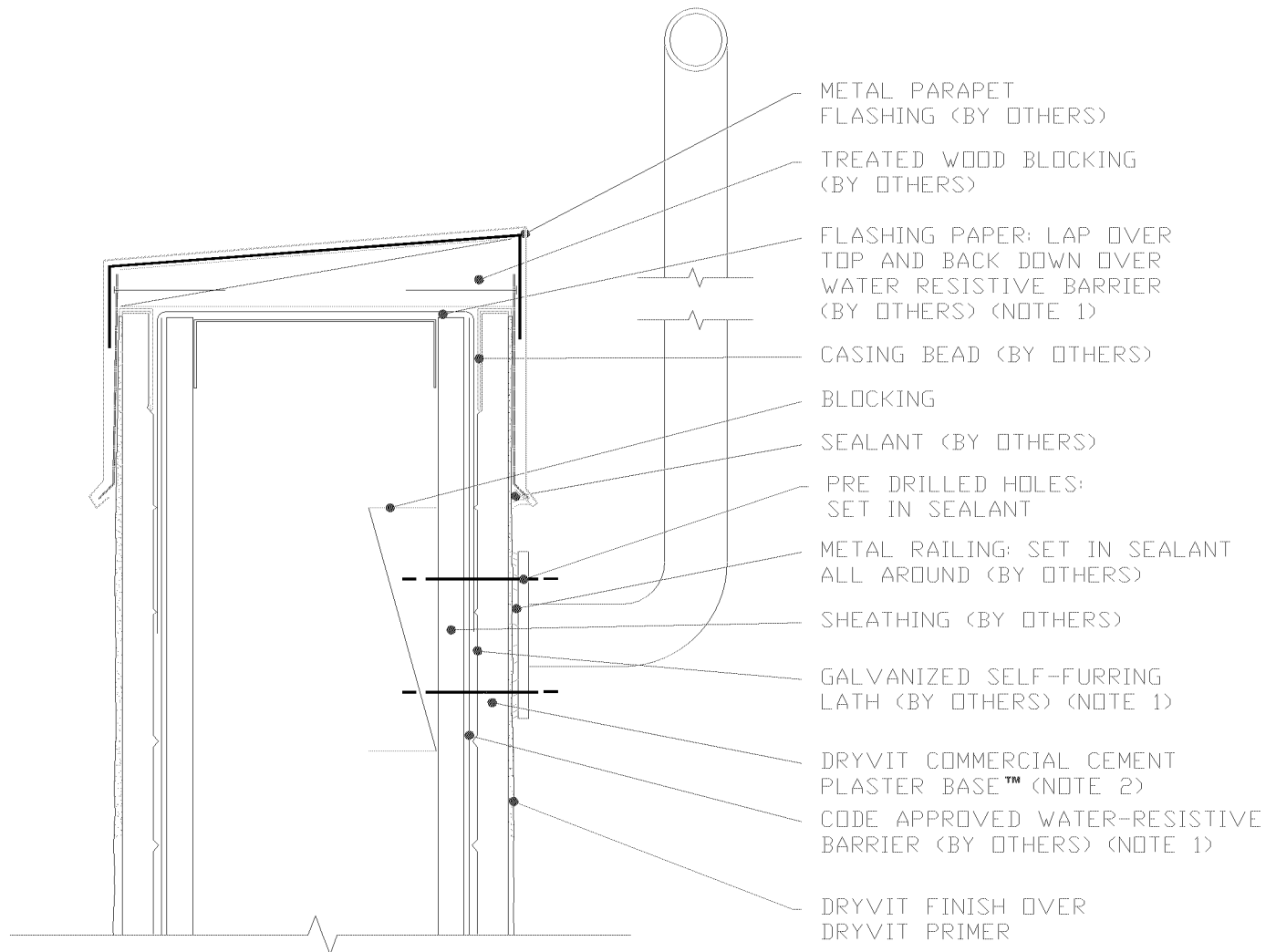
## Two-Piece Horizontal Expansion Joint

### NOTE:

1. BUILDING CODES REQUIRE 2 LAYERS OVER WOOD BASED SUBSTRATES. COMPLY WITH ALL LOCAL CODE REQUIREMENTS.
2. OTHER APPROVED SCRATCH AND BROWN COATS MAY BE ACCEPTABLE. CONSULT DRYVIT SYSTEMS, INC. FOR SPECIFICS.

The architecture, engineering, and design of the project using the Dryvit products is the responsibility of the project's design professional. All systems must comply with local building codes and standards. This detail is for general information and guidance only and Dryvit specifically disclaims any liability for the use of this detail and for the architecture, design, engineering or workmanship of any project. The project design professional determines, in its sole discretion, whether this detail or a functionally equivalent detail is best suited for the project. Use of a functionally equivalent detail does not violate Dryvit's warranty. This detail is subject to change without notice. Contact Dryvit to ensure you have the most recent version.





## Commercial Cement Plaster 2™

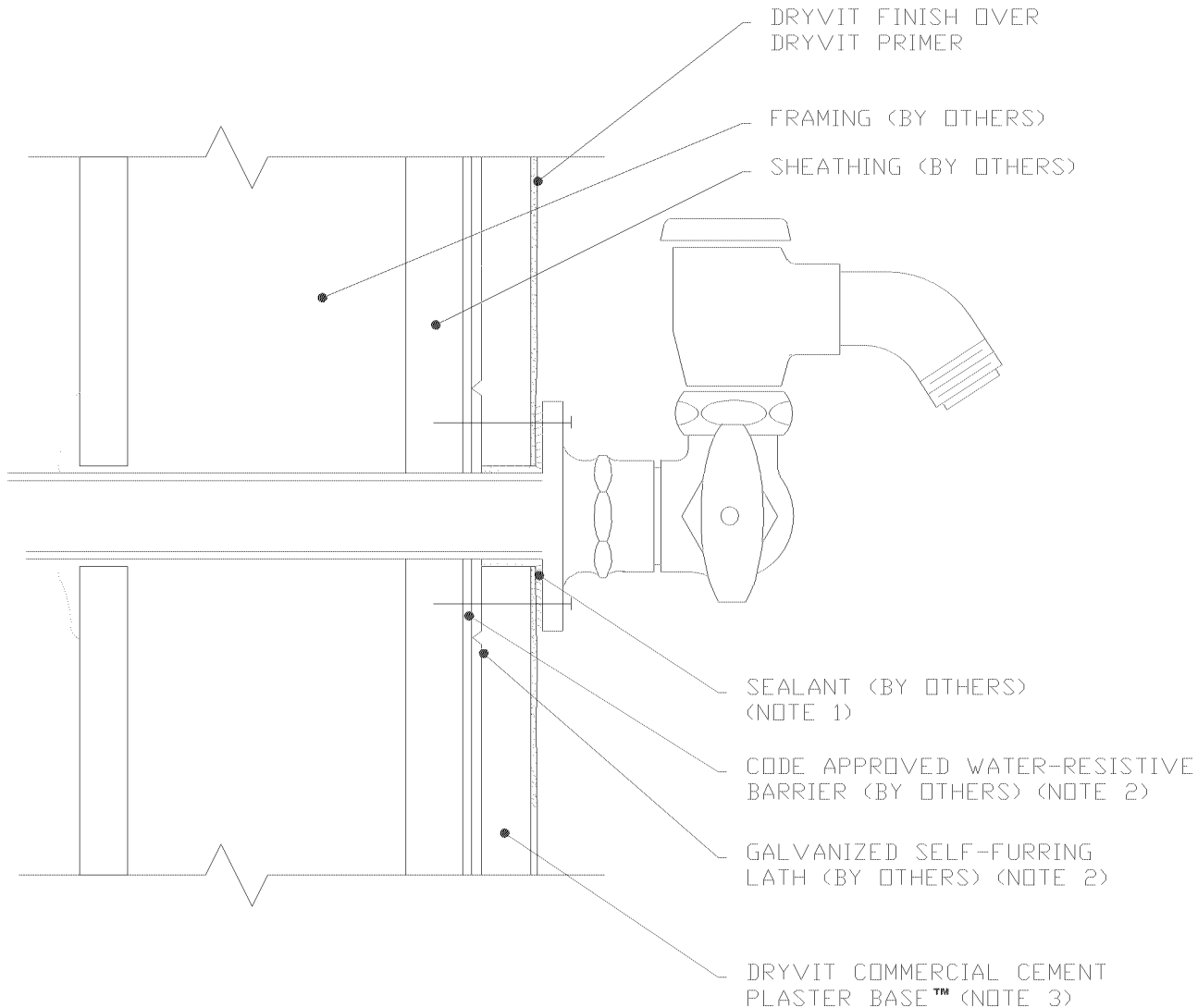
### Pipe Railing Attachment

#### NOTE:

1. BUILDING CODES REQUIRE 2 LAYERS OVER WOOD BASED SUBSTRATES. COMPLY WITH ALL LOCAL CODE REQUIREMENTS.
2. OTHER APPROVED SCRATCH AND BROWN COATS MAY BE ACCEPTABLE. CONSULT DRYVIT SYSTEMS, INC. FOR SPECIFICS.

The architecture, engineering, and design of the project using the Dryvit products is the responsibility of the project's design professional. All systems must comply with local building codes and standards. This detail is for general information and guidance only and Dryvit specifically disclaims any liability for the use of this detail and for the architecture, design, engineering or workmanship of any project. The project design professional determines, in its sole discretion, whether this detail or a functionally equivalent detail is best suited for the project. Use of a functionally equivalent detail does not violate Dryvit's warranty. This detail is subject to change without notice. Contact Dryvit to ensure you have the most recent version.





## Commercial Cement Plaster 2™

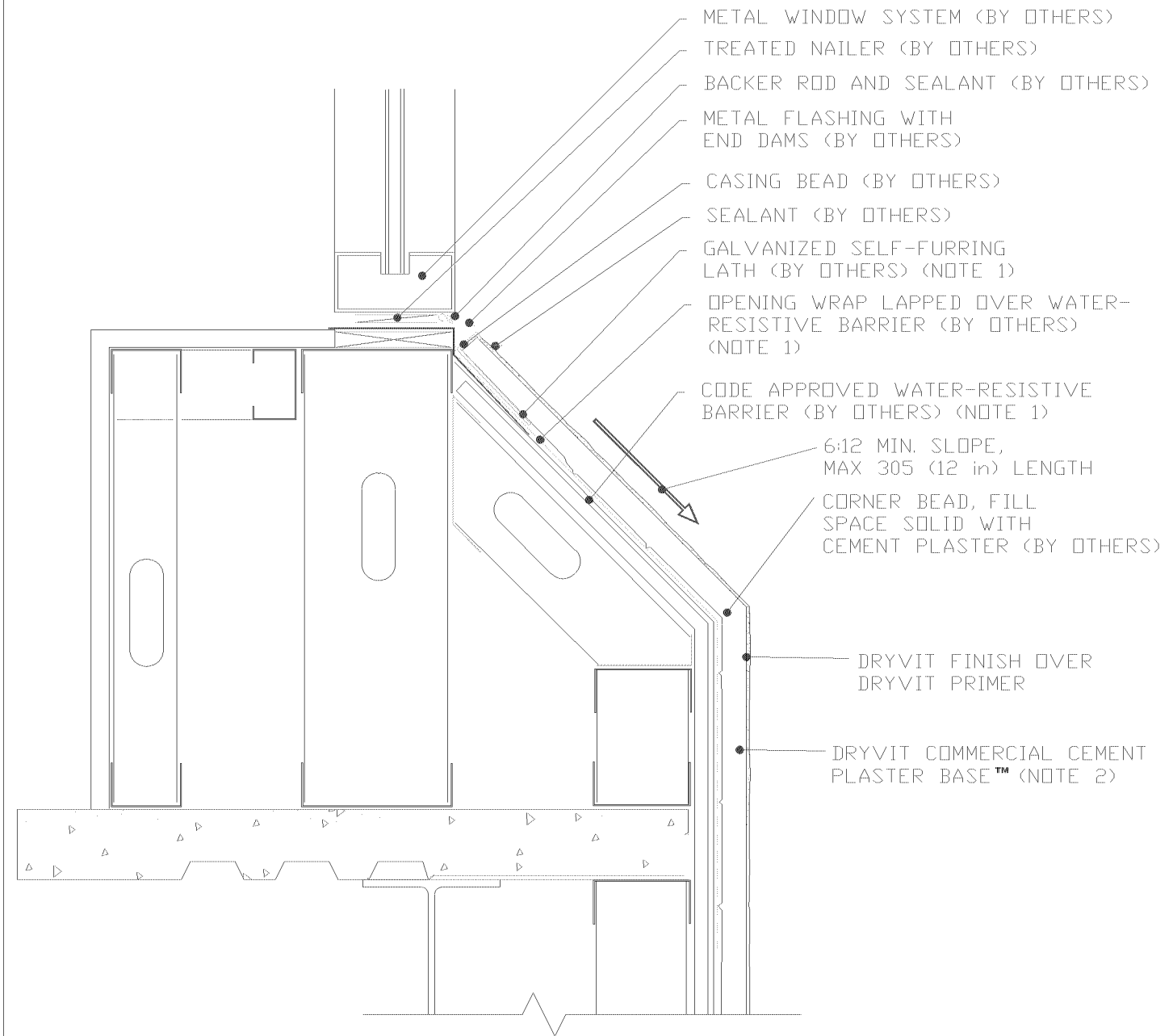
### Hose Bib Penetration

#### NOTE:

1. PRE-DRILLED HOLES SET IN SEALANT.
2. BUILDING CODES REQUIRE 2 LAYERS OVER WOOD BASED SUBSTRATES. COMPLY WITH ALL LOCAL CODE REQUIREMENTS.
3. OTHER APPROVED SCRATCH AND BROWN COATS MAY BE ACCEPTABLE. CONSULT DRYVIT SYSTEMS, INC. FOR SPECIFICS.

The architecture, engineering, and design of the project using the Dryvit products is the responsibility of the project's design professional. All systems must comply with local building codes and standards. This detail is for general information and guidance only and Dryvit specifically disclaims any liability for the use of this detail and for the architecture, design, engineering or workmanship of any project. The project design professional determines, in its sole discretion, whether this detail or a functionally equivalent detail is best suited for the project. Use of a functionally equivalent detail does not violate Dryvit's warranty. This detail is subject to change without notice. Contact Dryvit to ensure you have the most recent version.





## Commercial Cement Plaster 2™

Sloped Sill

### NOTE:

1. BUILDING CODES REQUIRE 2 LAYERS OVER WOOD BASED SUBSTRATES. COMPLY WITH ALL LOCAL CODE REQUIREMENTS.
2. OTHER APPROVED SCRATCH AND BROWN COATS MAY BE ACCEPTABLE. CONSULT DRYVIT SYSTEMS, INC. FOR SPECIFICS.

The architecture, engineering, and design of the project using the Dryvit products is the responsibility of the project's design professional. All systems must comply with local building codes and standards. This detail is for general information and guidance only and Dryvit specifically disclaims any liability for the use of this detail and for the architecture, design, engineering or workmanship of any project. The project design professional determines, in its sole discretion, whether this detail or a functionally equivalent detail is best suited for the project. Use of a functionally equivalent detail does not violate Dryvit's warranty. This detail is subject to change without notice. Contact Dryvit to ensure you have the most recent version.

## Acrylic Finish on Stucco Installation Certification

Acrylic Finish Manufacturer: Dryvit Corporation

Acrylic Finish Type/ Brand: Sandpebble

Project Address: Holiday Inn Express & Suites 1225 78<sup>th</sup> Street Bloomington Mn. 55425

Plastering Contractor: Caliber Stucco Inc.

Address: 14115 Lincoln St.

Ham Lake Mn 55304

Phone: 763-331-0097

Cell: 612-735-2754

Plaster Contractor Listing # Issued by Acrylic Finish Manufacturer: Outsulation X System 9004457

Outsulation System 004457      Outsulation Plus MD System 7004457

I, the undersigned, hereby certify that the acrylic finish product at the above address has been installed in accordance with the manufacturer's instructions.

*Nick Lardani*

Signature of Authorized Plastering Contractor Representative

Date 11/21/2017

INSTALLATION CARD MUST BE LEFT AT THE JOBSITE WITH PERMIT DURING  
COMPLETION OF WORK AND BEFORE FINAL INSPECTION

FINAL APPROVAL FOR OCCUPANCY WILL NOT BE GIVEN UNTIL THIS FORM IS COMPLETED AND  
WITNESSED BY THE BUILDING INSPECTOR

Building Inspector Signature

Date