

EXHIBIT A

**DRAINAGE AND UTILITY EASEMENT TO BE VACATED
LOT 1, BLOCK 1, INTERNATIONAL AIRPORT PARK ADDITION**

All of the drainage and utility easement lying within Lot 1, Block 1, INTERNATIONAL AIRPORT PARK ADDITION, as dedicated of the recorded plat thereof.

**DRAINAGE AND UTILITY EASEMENT TO BE VACATED
OUTLOT A, INTERNATIONAL AIRPORT PARK ADDITION**

All of that part of the drainage and utility easement lying within Outlot A, as dedicated on the recorded plat of INTERNATIONAL AIRPORT PARK ADDITION, which lies westerly of the southerly extension of the east line of Lot 1, Block 1, said plat.

INTERSTATE HIGHWAY NO. 494
(STATE HIGHWAY NO. 5)

PL201700228
PL2017-228

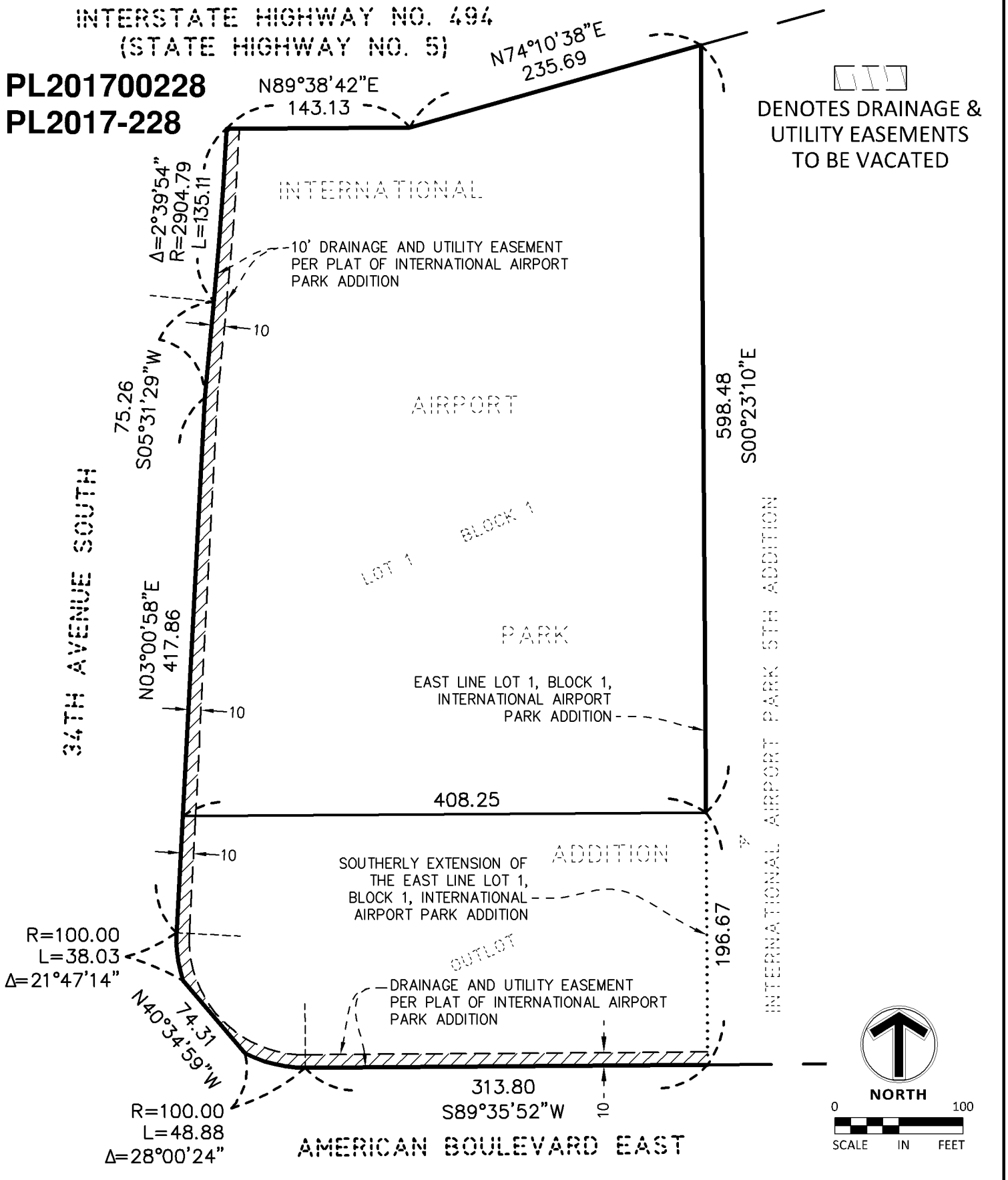


EXHIBIT B

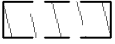
**DRAINAGE AND UTILITY EASEMENT TO BE VACATED
OUTLOT A, INTERNATIONAL AIRPORT PARK 3RD ADDITION**

All of the drainage and utility easement lying within Outlot A, INTERNATIONAL AIRPORT PARK 3RD ADDITION, as dedicated of the recorded plat thereof.

INTERSTATE HIGHWAY NO. 494
(STATE HIGHWAY NO. 5)

N74°10'38"E
235.69

N89°38'42"E
143.13

 DENOTES DRAINAGE & UTILITY EASEMENTS TO BE VACATED

PL201700228
PL2017-228

34TH AVENUE SOUTH

Δ=2°39'54"
R=2904.79
L=135.11

75.26
S05°31'29"W

N03°00'58"E
326.87

INTERNATIONAL

AIRPORT

PARK

LOT 1
BLOCK 1

ADDITION

EAST LINE LOT 1, BLOCK 1,
INTERNATIONAL AIRPORT
PARK ADDITION

S89°36'50"W
408.25

INTERNATIONAL

DRAINAGE AND UTILITY EASEMENT
PER PLAT OF INTERNATIONAL AIRPORT
PARK 3RD ADDITION

AIRPORT

OUTLOT A PARK

DRAINAGE AND UTILITY EASEMENT
PER PLAT OF INTERNATIONAL AIRPORT
PARK 3RD ADDITION

3RD

ADDITION

R=100.00
L=38.03
Δ=21°47'14"

N03°00'58"E
90.99

N40°34'59"W
74.31

R=100.00
L=48.88
Δ=28°00'24"

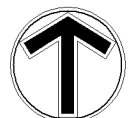
313.80
S89°35'52"W

AMERICAN BOULEVARD EAST

598.48
S00°23'10"E

INTERNATIONAL AIRPORT PARK 5TH ADDITION

S00°23'10"E
196.67



NORTH

0 100
SCALE IN FEET



EMBASSY SUITES
3500 AMERICAN BLVD. EAST
BLOOMINGTON, MN
EASEMENT EXHIBIT

Designed:
Drawn: LCC
Approved: RMB
Rev.:
Date:

Exhibit Number
B
SHEET 2 OF 2
Project No. 20697

EXHIBIT C

**SIDEWALK AND BIKEWAY EASEMENT TO BE VACATED
LOT 1, BLOCK 1, INTERNATIONAL AIRPORT PARK ADDITION**

All of the easement for sidewalk and bikeway purposes lying within the westerly 10 feet of Lot 1, Block 1, INTERNATIONAL AIRPORT PARK ADDITION, as granted to the City of Bloomington in Document Number 4935645, files of the Hennepin County Recorder.

**SIDEWALK AND BIKEWAY EASEMENT TO BE VACATED
OUTLOT A, INTERNATIONAL AIRPORT PARK ADDITION**

That part of the easement for sidewalk and bikeway purposes over and across Outlot A, INTERNATIONAL AIRPORT PARK ADDITION, as granted to the City of Bloomington in Document Number 4935645, files of the Hennepin County Recorder, which lies westerly of the southerly extension of the east line of Lot 1, Block 1, INTERNATIONAL AIRPORT PARK ADDITION.

INTERSTATE HIGHWAY NO. 494
(STATE HIGHWAY NO. 5)

N74°10'38"E
235.69

N89°38'42"E
143.13

DENOTES SIDEWALK &
BIKEWAY EASEMENT
TO BE VACATED

PL201700228
PL2017-228

INTERNATIONAL

10' SIDEWALK AND BIKEWAY EASEMENT
PER DOC. NO. 4935645

$\Delta=2^{\circ}39'54"$
 $R=2904.79$
 $L=135.11$

75.26
S05°31'29"W

34TH AVENUE SOUTH

N03°00'58"E

417.86

AIRPORT

LOT 1
BLOCK 1

PARK

EAST LINE LOT 1, BLOCK 1,
INTERNATIONAL AIRPORT
PARK ADDITION

408.25

SOUTHERLY EXTENSION OF
THE EAST LINE LOT 1,
BLOCK 1, INTERNATIONAL
AIRPORT PARK ADDITION

ADDITION

$R=100.00$
 $L=38.03$
 $\Delta=21^{\circ}47'14"$

N40°34'59"W
74.31

$R=100.00$
 $L=48.88$
 $\Delta=28^{\circ}00'24"$

SIDEWALK AND BIKEWAY EASEMENT
PER DOC. NO. 4935645

OUTLOT

313.80
S89°35'52"W

AMERICAN BOULEVARD EAST

598.48
S00°23'10"E

INTERNATIONAL AIRPORT PARK 5TH ADDITION

196.67



NORTH

0 100
SCALE IN FEET



Engineering | Surveying | Planning | Environmental

EMBASSY SUITES
3500 AMERICAN BLVD. EAST
BLOOMINGTON, MN
EASEMENT EXHIBIT

Designed:
Drawn: LCC
Approved: RMB
Issued: 06/05/2017
Rev.:
Date:

Exhibit Number

C

SHEET 2 OF 2

Project No. 20697