

CITY OF BLOOMINGTON

2018 PARK IMPROVEMENTS PROJECT

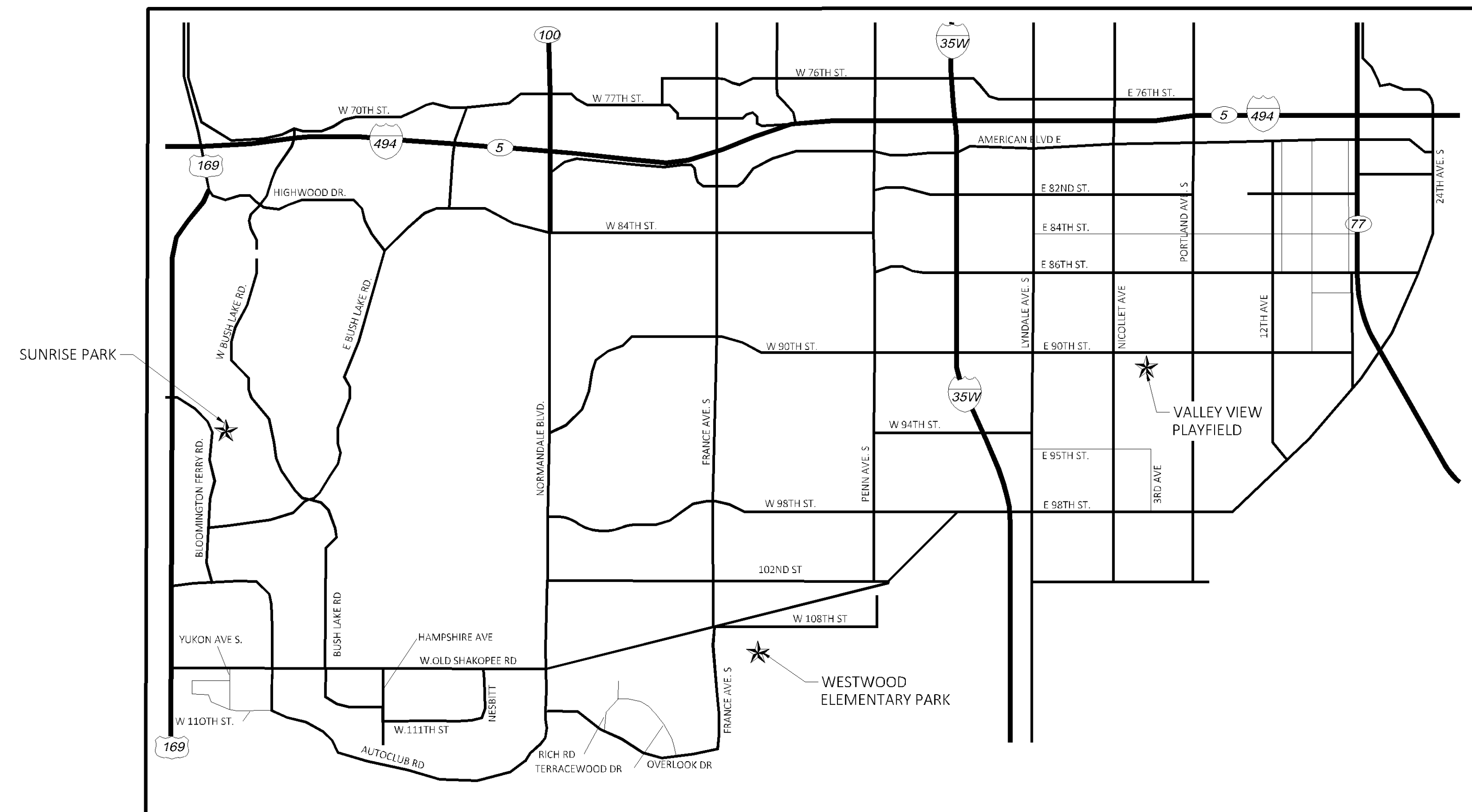
PARKS AND RECREATION DEPARTMENT

BLOOMINGTON, MN

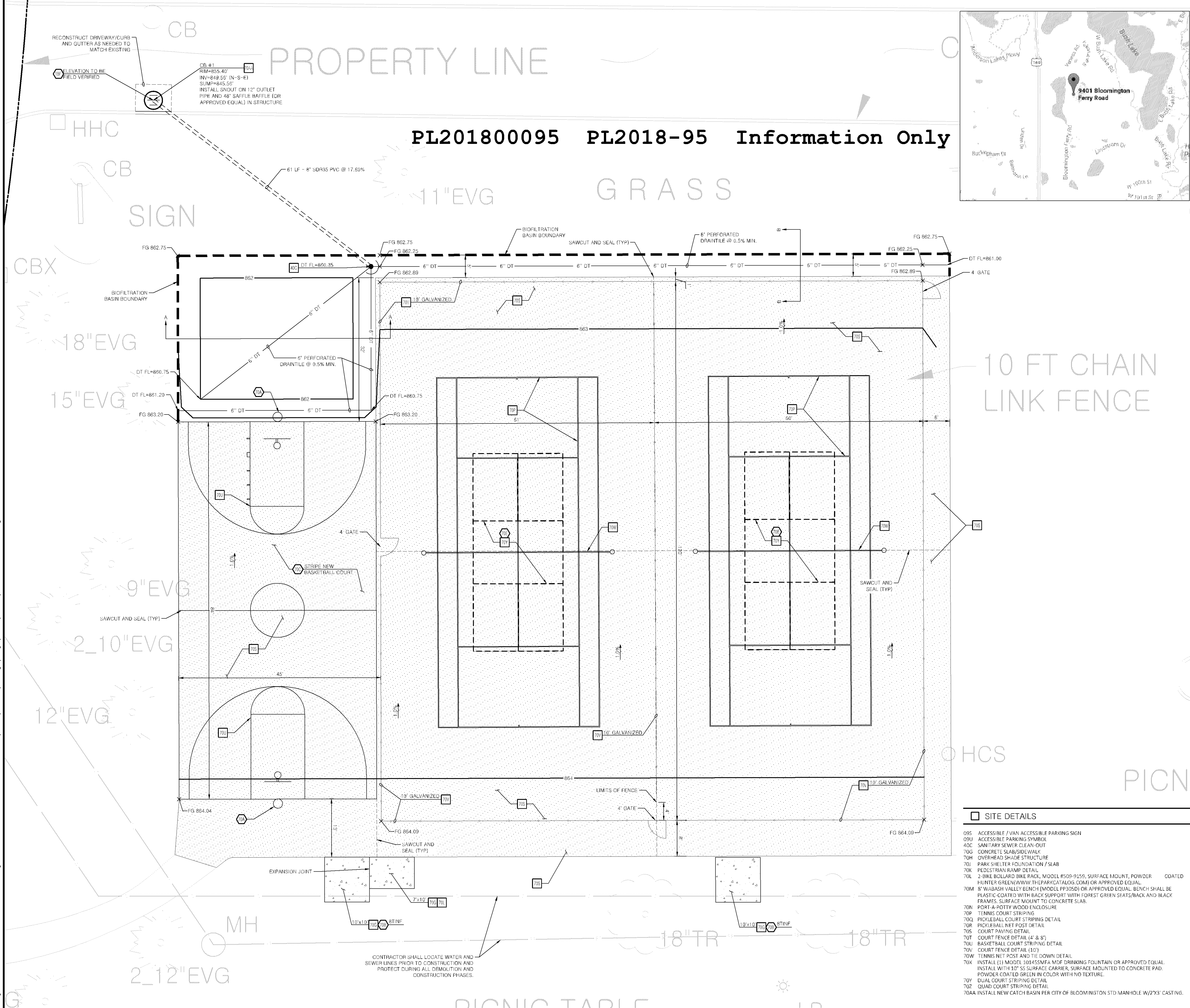
PL201800095 PL2018-95 Information Only


GENERAL NOTES:

- A. TOPOGRAPHIC BOUNDARY SURVEY, INCLUDING PROPERTY LINES, LEGAL DESCRIPTION, EXISTING UTILITIES, SITE TOPOGRAPHY WITH SPOT ELEVATIONS, OUTSTANDING PHYSICAL FEATURES AND EXISTING STRUCTURE LOCATIONS WAS PROVIDED BY THE CITY OF BLOOMINGTON.
- CEI ENGINEERING AND ITS ASSOCIATES WILL NOT BE HELD RESPONSIBLE FOR THE ACCURACY OF THE SURVEY'S PROVIDED OR FOR DESIGN ERRORS OR OMISSIONS RESULTING FROM SURVEY INACCURACIES.
- B. ALL PHASES OF SITE WORK FOR THIS PROJECT SHALL MEET OR EXCEED THE OWNER / DEVELOPER SITE WORK SPECIFICATIONS.
- C. CONTRACTOR SHALL BE RESPONSIBLE FOR THE REMOVAL OF EXISTING STRUCTURES, RELATED UTILITIES, PAVING, UNDERGROUND STORAGE TANKS AND ANY OTHER EXISTING IMPROVEMENTS AS NOTED. SEE SITE WORK SPECIFICATIONS.
- D. CONTRACTOR IS TO REMOVE AND DISPOSE OF ALL DEBRIS, RUBBISH AND OTHER MATERIALS RESULTING FROM PREVIOUS AND CURRENT DEMOLITION OPERATIONS. DISPOSAL WILL BE IN ACCORDANCE WITH ALL LOCAL, STATE AND/OR FEDERAL REGULATIONS GOVERNING SUCH OPERATIONS.
- E. THE GENERAL CONTRACTOR WILL BE HELD SOLELY RESPONSIBLE FOR AND SHALL TAKE ALL PRECAUTIONS NECESSARY TO AVOID PROPERTY DAMAGE TO ADJACENT PROPERTIES DURING THE CONSTRUCTION PHASES OF THIS PROJECT.
- F. **WARRANTY/DISCLAIMER:** THE DESIGNS REPRESENTED IN THESE PLANS ARE IN ACCORDANCE WITH ESTABLISHED PRACTICES OF CIVIL ENGINEERING FOR THE DESIGN FUNCTIONS AND USES INTENDED BY THE OWNER AT THIS TIME. HOWEVER, NEITHER THE ENGINEER NOR ITS PERSONNEL CAN OR DO WARRANT THESE DESIGNS OR PLANS AS CONSTRUCTED EXCEPT IN THE SPECIFIC CASES WHERE THE ENGINEER INSPECTS AND CONTROLS THE PHYSICAL CONSTRUCTION ON A CONTEMPORARY BASIS AT THE SITE.
- G. **SAFETY NOTICE TO CONTRACTOR:** IN ACCORDANCE WITH GENERALLY ACCEPTED CONSTRUCTION PRACTICES, THE CONTRACTOR SHALL BE SOLELY AND COMPLETELY RESPONSIBLE FOR CONDITIONS OF THE JOB SITE, INCLUDING SAFETY OF ALL PERSONS AND PROPERTY DURING PERFORMANCE OF THE WORK. THIS REQUIREMENT WILL APPLY CONTINUOUSLY AND NOT BE LIMITED TO NORMAL WORKING HOURS. ANY CONSTRUCTION OBSERVATION BY THE ENGINEER OF THE CONTRACTOR'S PERFORMANCE IS NOT INTENDED TO INCLUDE REVIEW OF THE ADEQUACY OF THE CONTRACTOR'S SAFETY MEASURES, IN, ON OR NEAR THE CONSTRUCTION SITE.
- H. ALL CONSTRUCTION IN STATE HIGHWAY DEPARTMENT RIGHT-OF-WAY SHALL BE COORDINATED WITH THE HIGHWAY DEPARTMENT RESIDENT ENGINEER.
- I. **WETLANDS NOTE:** ANY DEVELOPMENT, EXCAVATION, CONSTRUCTION, OR FILLING IN A U.S. CORPS OF ENGINEERS DESIGNATED WETLAND IS SUBJECT TO LOCAL, STATE AND FEDERAL APPROVALS. THE CONTRACTOR SHALL COMPLY WITH ALL PERMIT REQUIREMENTS AND/OR RESTRICTIONS AND ANY VIOLATION WILL BE SUBJECT TO FEDERAL PENALTY. THE CONTRACTOR SHALL HOLD THE OWNER/DEVELOPER, THE ENGINEER AND THE LOCAL GOVERNING AGENCIES HARMLESS AGAINST SUCH VIOLATION.
- J. ANY WORK, INCLUDING STAGING, THAT OCCURS ON PUBLIC STREETS WILL REQUIRE AN APPROVED TRAFFIC CONTROL PLAN. PLANS SHALL BE SUBMITTED TO PUBLIC WORKS, BY THE CONTRACTOR, FOR APPROVAL AT LEAST 72 HOURS IN ADVANCE. CONTACT MR. TOM BOWLIN AT 952-563-4914 REGARDING APPROVALS.

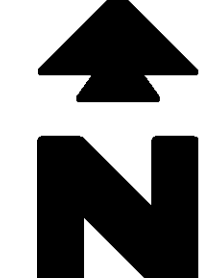


30576.DWG: 30576-SUNRISE-PROJ.dwg LAST SAVED BY: JAUUSTINE LOCATION: P:\30000\30576\01Drawings\Design\Rev-0\Sunrise-PROJ.dwg





Know what's below.
Call before you dig.



0 10' 15' 20'

SCALE IN FEET

PROPOSED LEGEND

- BOUNDARY LINE
- RIGHT OF WAY LINE
- LIMITS OF NEW TRAIL CONSTRUCTION
- LIMITS OF CONCRETE SLAB/SIDEWALK

GENERAL SITE NOTES

- ALL DIMENSIONS SHOWN ARE TO THE FACE OF CURB UNLESS OTHERWISE NOTED.
- ALL CURB RETURN RADI SHALL BE 2' OR 10', AS SHOWN TYPICAL ON THIS PLAN, UNLESS OTHERWISE NOTED.

GENERAL LANDSCAPE NOTES

- LOCATE ALL UTILITIES AND SITE LIGHTING CONDUITS BEFORE LANDSCAPE CONSTRUCTION BEGINS.
- NOTIFY ENGINEER OR DESIGNATED REPRESENTATIVE OF ANY LAYOUT DISCREPANCIES PRIOR TO ANY PLANTING.
- ALL DISTURBED AREAS SHALL BE SEEDED AS FOLLOWS:
GRASS SEED MIX: MINDOT 25-151 HIGH MAINTENANCE TURF, OR APPROVED EQUAL
- ALL SLOPES AND AREAS DISTURBED BY CONSTRUCTION SHALL BE GRADED SMOOTH AND SIX INCHES OF TOPSOIL APPLIED (PER RPB/CWD). IF ADEQUATE TOPSOIL IS NOT AVAILABLE ON SITE, THE CONTRACTOR SHALL PROVIDE TOPSOIL, APPROVED BY THE OWNER, AS NEEDED. THE AREA SHALL THEN BE SEEDED, FERTILIZED, MULCHED, WATERED AND MAINTAINED UNTIL HARDY GRASS GROWTH IS ESTABLISHED IN ALL AREAS. ANY RELOCATED TREES SHALL BE MAINTAINED UNTIL SUCH POINT AS TREE IS RE-ESTABLISHED. ANY AREAS DISTURBED FOR ANY REASON PRIOR TO FINAL ACCEPTANCE OF THE PROJECT SHALL BE CORRECTED BY THE CONTRACTOR AT NO ADDITIONAL COST TO THE OWNER.
- MAINTAIN 5' MIN. HORIZONTAL SEPARATION BETWEEN TREE PLANTINGS AND ALL UTILITIES.
- ACCEPTANCE OF GRADING AND SEEDING SHALL BE BY ENGINEER AND/OR OWNER. THE CONTRACTOR SHALL ASSUME MAINTENANCE RESPONSIBILITIES FOR A MINIMUM OF ONE (1) YEAR OR UNTIL SECOND CUTTING, WHICHEVER IS LONGER. MAINTENANCE SHALL INCLUDE WATERING, WEEDING, RESEEDING AND OTHER OPERATIONS NECESSARY TO KEEP ALL LAWN AREAS IN A THRIVING CONDITION. UPON FINAL ACCEPTANCE, OWNER SHALL ASSUME ALL MAINTENANCE RESPONSIBILITIES. AFTER LAWN AREAS HAVE GERMINATED, AREAS WHICH FAIL TO SHOW A UNIFORM STAND OF GRASS FOR ANY REASON WHATSOEVER SHALL BE RE-SEEDED REPEATEDLY UNTIL ALL AREAS ARE COVERED WITH A SATISFACTORY STAND OF GRASS. MINIMUM ACCEPTANCE OF SEEDED LAWN AREAS MAY INCLUDE SCATTERED BARE SPOTS, NONE OF WHICH ARE LARGER THAN 1 SQUARE FOOT, AND WHEN COMBINED DO NOT EXCEED 2% OF TOTAL SEEDED LAWN AREA.

GENERAL GRADING NOTES

- PRIOR TO INSTALLATION OF STORM SEWER, THE CONTRACTOR SHALL EXCAVATE, VERIFY, AND CALCULATE ALL CROSSINGS AND INFORM THE OWNER AND THE ENGINEER OF ANY CONFLICTS PRIOR TO CONSTRUCTION. THE ENGINEER WILL BE HELD HARMLESS IN THE EVENT THE ENGINEER IS NOT NOTIFIED OF DESIGN CONFLICTS.
- ALL SLOPES AND AREAS DISTURBED BY CONSTRUCTION SHALL BE GRADED SMOOTH AND 6" OF TOPSOIL APPLIED. IF ADEQUATE TOPSOIL IS NOT AVAILABLE ON SITE, THE CONTRACTOR SHALL PROVIDE TOPSOIL, AS NEEDED. THE AREA SHALL THEN BE SEEDED, FERTILIZED, MULCHED, WATERED AND MAINTAINED UNTIL HARDY GRASS GROWTH IS ESTABLISHED IN ALL AREAS. ANY AREAS DISTURBED FOR ANY REASON PRIOR TO FINAL ACCEPTANCE OF THE PROJECT SHALL BE CORRECTED BY THE CONTRACTOR AT NO ADDITIONAL COST TO THE OWNER.
- THE CONTRACTOR IS SPECIFICALLY CAUTIONED THAT THE LOCATION AND/OR ELEVATION OF EXISTING UTILITIES AS SHOWN ON THESE PLANS IS BASED ON RECORDS OF THE VARIOUS UTILITY COMPANIES, AND WHERE POSSIBLE, MEASUREMENTS TAKEN IN THE FIELD. THE INFORMATION IS NOT TO BE RELIED ON AS BEING EXACT OR COMPLETE. THE CONTRACTOR MUST CALL THE APPROPRIATE UTILITY COMPANY AT LEAST 48 HOURS BEFORE ANY EXCAVATION TO REQUEST EXACT FIELD LOCATION OF UTILITIES.
- CORE DRILL ANY NEW CONNECTION INTO EXISTING STORM SEWER. PROVIDE WATERTIGHT CONNECTION.
- CONNECT UNDERDRAIN TO STORM SEWER WHEN AVAILABLE
- STORM SEWER ALTERATION PERMIT REQUIRED BY BLOOMINGTON UTILITIES, CONTACT 952-563-8777


SITE NOTES

- 4 INCH TRAFFIC WHITE LANE STRIPE (SEE LENGTH INDICATED AT SYMBOL).
- 4 INCH WIDE PAINTED WHITE STRIPES, 2 0 FOOT O.C. @ 45 DEGREES (SEE SIZE INDICATED AT SYMBOL).
- CONNECT TO EXISTING STORM DRAIN MANHOLE OR INLET.
- MATCH EXISTING PAVEMENT ELEVATIONS.
- CONNECT TO EXISTING STORM DRAIN PIPE.
- TAPER CURB FROM 6 INCHES TO 0 INCHES OVER 2 FEET.
- MODEL B871-BK WITH BACKBOARD (WHITE), SUPPORT POST (BLACK) AND HOOP (ORANGE) MANUFACTURED BY BISON, INC. (WWW.BISONINC.COM) OR APPROVED EQUAL. GOAL ASSEMBLY SHALL BE 10' FIXED IN HEIGHT AND INSTALLED WITH A 60" DEEP X 24" DIAMETER CONCRETE FOOTING, 5' BACK OF BASELINE.
- 8' PICKNIC TABLE MODEL AT81NF AND AT81NFHCP BY WERCOAT PRODUCTS (WWW.WERCOAT.COM) OR APPROVED EQUAL. TABLE TO HAVE FOREST GREEN TOP AND SEATS WITH BLACK FRAME.
- NEW BASKETBALL COURT STRIPING, WHITE LINES.
- CONTRACTOR TO CONSTRUCT/INSTALL NEW 28' HEXAGON PARK SHELTER AND SLAB, RCP SHELTERS MODEL AS-HEX28-04 OR APPROVED EQUAL. SHELTER TO HAVE FOREST GREEN ROOF AND DARK BROWN SUPPORT POSTS.
- STRIPE PICKLEBALL COURT YELLOW.

SITE DETAILS

- ACCESSIBLE / VAN ACCESSIBLE PARKING SIGN
- ACCESSIBLE PARKING SYMBOL
- SANITARY SEWER CLEAN-OUT
- CONCRETE SLAB/SIDEWALK
- OVERHEAD SHADE STRUCTURE
- PARK SHELTER FOUNDATION / SLAB
- PEDESTRIAN RAMP DETAIL
- 2 BIKE BOLLARD BIKE RACK, MODEL #509-9155, SURFACE MOUNT, POWDER COATED HUNTER GREEN (WWW.THEPARKCATALOG.COM) OR APPROVED EQUAL
- 8' WABASH VALLEY BENCH (MODEL PP30SD) OR APPROVED EQUAL. BENCH SHALL BE PLASTIC COATED WITH BACK SUPPORT WITH FOREST GREEN SEATS/BACK AND BLACK FRAMES. SURFACE MOUNT TO CONCRETE SLAB.
- PORT-A-POTTY WOOD ENCLOSURE
- TENNIS COURT STRIPING
- PICKLEBALL COURT STRIPING DETAIL
- PICKLEBALL NET POST DETAIL
- COURT PAVING DETAIL
- COURT FENCE DETAIL (4' & 8')
- BASKETBALL COURT STRIPING DETAIL
- COURT FENCE DETAIL (10')
- TENNIS NET POST AND TIE DOWN DETAIL
- INSTALL (1) MODEL 10145SMFA MDF DRINKING FOUNTAIN OR APPROVED EQUAL. INSTALL WITH 10" SS SURFACE CARRIER, SURFACE MOUNTED TO CONCRETE PAD. POWDER COATED GREEN IN COLOR WITH NO TEXTURE.
- DUAL COURT STRIPING DETAIL
- QUAD COURT STRIPING DETAIL
- INSTALL NEW CATCH BASIN PER CITY OF BLOOMINGTON STD MANHOLE W/273" CASTING.

30576	1/17/19	ALC	ALC	AJR	AJR
CEI PROJECT NO.	INITIAL DATE	DPOR	PM	DES	DRW



Engineering Associates, Inc.

ENGINEERS • PLANNERS • SURVEYORS
LANDSCAPE ARCHITECTS • ENVIRONMENTAL SCIENTISTS

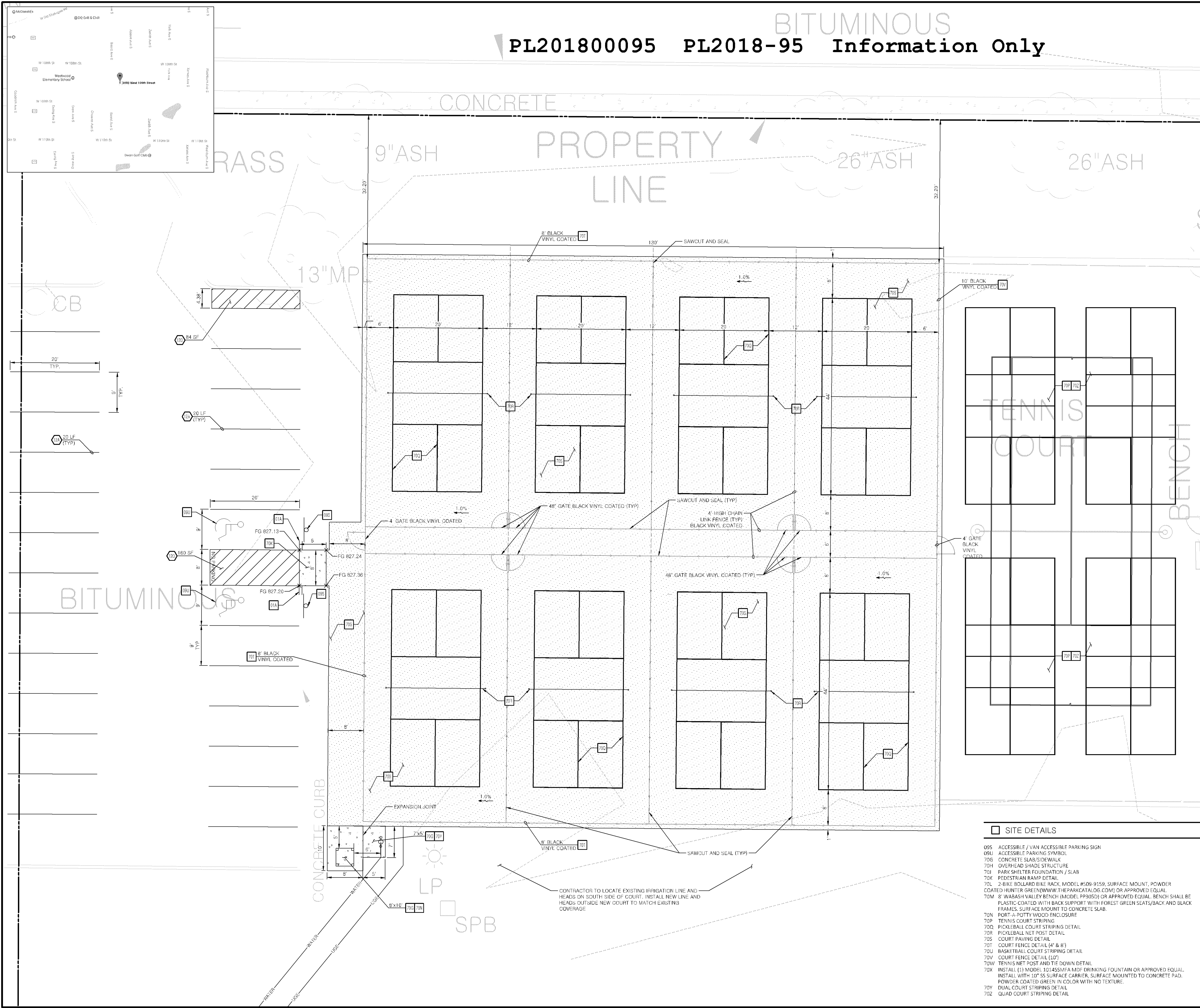
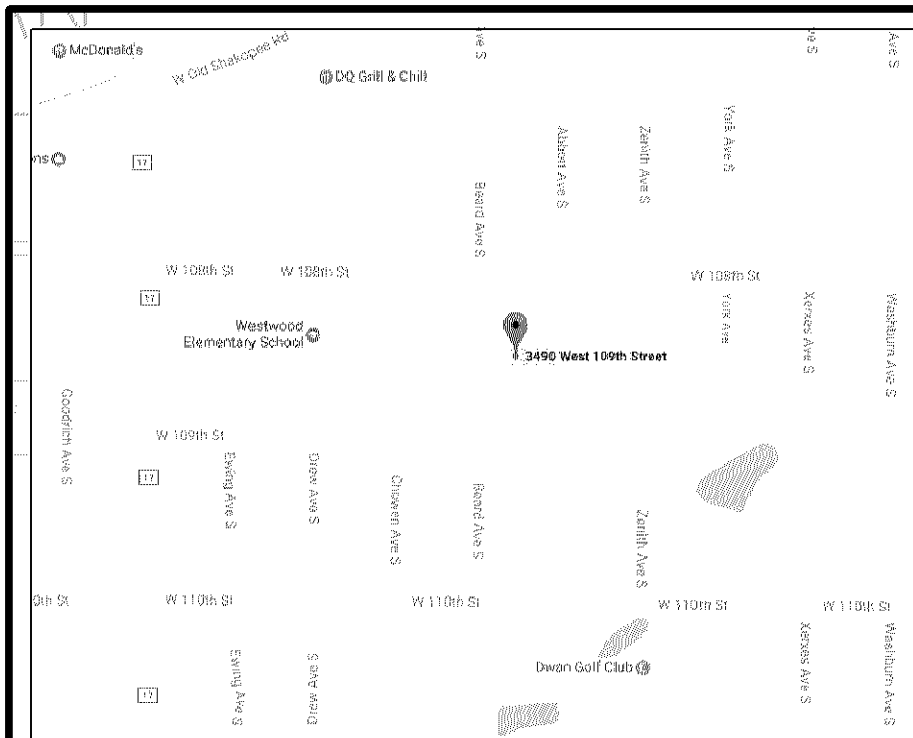
2025 Centre Points Blvd., Suite 210
Mendota Heights, MN 55120

(651)432-8960
(651)432-1149

CITY OF BLOOMINGTON
9401 BLOOMINGTON FERRY ROAD
BLOOMINGTON, MN

SUNRISE PARK - SITE PLAN	REV DATE 3/19/18 REV-0	SHEET NO. C1.1
--------------------------	------------------------------	-------------------

© 2018 CEI ENGINEERING ASSOCIATES, INC.



PROPOSED LEGEND	
	BOUNDARY LINE
	RIGHT OF WAY LINE
	LIMITS OF NEW TRAIL CONSTRUCTION
	LIMITS OF CONCRETE SLAB/SIDEWALK

- GENERAL SITE NOTES**
- ALL DIMENSIONS SHOWN ARE TO THE FACE OF CURB UNLESS OTHERWISE NOTED.
 - ALL CURB RETURN RADI SHALL BE 2' OR 10' AS SHOWN TYPICAL ON THIS PLAN, UNLESS OTHERWISE NOTED.

- GENERAL LANDSCAPE NOTES**
- LOCATE ALL UTILITIES AND SITE LIGHTING CONDUITS BEFORE LANDSCAPE CONSTRUCTION BEGINS.
 - NOTIFY ENGINEER OR DESIGNATED REPRESENTATIVE OF ANY LAYOUT DISCREPANCIES PRIOR TO ANY PLANTING.
 - ALL DISTURBED AREAS SHALL BE SEEDED AS FOLLOWS:
GRASS SEED MIX: MINDOT 25-151 HIGH MAINTENANCE TURF, OR APPROVED EQUAL
 - ALL SLOPES AND AREAS DISTURBED BY CONSTRUCTION SHALL BE GRADED SMOOTH AND FOUR INCHES OF TOPSOIL APPLIED. IF ADEQUATE TOPSOIL IS NOT AVAILABLE ON SITE, THE CONTRACTOR SHALL PROVIDE TOPSOIL, APPROVED BY THE OWNER, AS NEEDED. THE AREA SHALL THEN BE SEEDED, FERTILIZED, MULCHED, WATERED AND MAINTAINED UNTIL HARDY GRASS GROWTH IS ESTABLISHED IN ALL AREAS. ANY RELOCATED TREES SHALL BE MAINTAINED UNTIL SUCH POINT AS TREE IS RE-ESTABLISHED. ANY AREAS DISTURBED FOR ANY REASON PRIOR TO FINAL ACCEPTANCE OF THE PROJECT SHALL BE CORRECTED BY THE CONTRACTOR AT NO ADDITIONAL COST TO THE OWNER.
 - MAINTAIN 5' MIN. HORIZONTAL SEPARATION BETWEEN TREE PLANTINGS AND ALL UTILITIES.
 - ACCEPTANCE OF GRADING AND SEEDINGS SHALL BE BY ENGINEER AND/OR OWNER. THE CONTRACTOR SHALL ASSUME MAINTENANCE RESPONSIBILITIES FOR A MINIMUM OF ONE (1) YEAR OR UNTIL SECOND CUTTING, WHICHEVER IS LONGER. MAINTENANCE SHALL INCLUDE WATERING, WEEDING, RESEEDING AND OTHER OPERATIONS NECESSARY TO KEEP ALL LAWN AREAS IN A THRIVING CONDITION. UPON FINAL ACCEPTANCE, OWNER SHALL ASSUME ALL MAINTENANCE RESPONSIBILITIES. AFTER LAWN AREAS HAVE GERMINATED, AREAS WHICH FAIL TO SHOW A UNIFORM STAND OF GRASS FOR ANY REASON WHATSOEVER SHALL BE RE-SEEDED REPEATEDLY UNTIL ALL AREAS ARE COVERED WITH A SATISFACTORY STAND OF GRASS. MINIMUM ACCEPTANCE OF SEEDED LAWN AREAS MAY INCLUDE SCATTERED BARE SPOTS, NONE OF WHICH ARE LARGER THAN 1 SQUARE FOOT, AND WHEN COMBINED DO NOT EXCEED 2% OF TOTAL SEEDED LAWN AREA.

- GENERAL GRADING NOTES**
- PRIOR TO INSTALLATION OF STORM SEWER, THE CONTRACTOR SHALL EXCAVATE, VERIFY, AND CALCULATE ALL CROSSINGS AND INFORM THE OWNER AND THE ENGINEER OF ANY CONFLICTS PRIOR TO CONSTRUCTION. THE ENGINEER WILL BE HELD HARMLESS IN THE EVENT THE ENGINEER IS NOT NOTIFIED OF DESIGN CONFLICTS.
 - ALL SLOPES AND AREAS DISTURBED BY CONSTRUCTION SHALL BE GRADED SMOOTH AND 6\"/>

- SITE NOTES**
- 12A 4 INCH TRAFFIC WHITE LANE STRIPE (SEE LENGTH INDICATED AT SYMBOL).
- 12D 4 INCH WIDE PAINTED WHITE STRIPES, 2.0 FOOT O.C., @ 45 DEGREES (SEE SIZE INDICATED AT SYMBOL).
- 18C CONNECT TO EXISTING STORM DRAIN MANHOLE OR INLET.
- 18D MATCH EXISTING PAVEMENT ELEVATIONS.
- 21B TAPER CURB FROM 6 INCHES TO 0 INCHES OVER 2 FEET.
- 70A MODEL BA871-6K WITH BACKBOARD (WHITE), SUPPORT POST (BLACK) AND HOOP (ORANGE) MANUFACTURED BY BISON, INC. (WWW.BISONINC.COM) OR APPROVED EQUAL. GOAL ASSEMBLY SHALL BE 10' FIXED IN HEIGHT AND INSTALLED WITH A 80\"/>

- SITE DETAILS**
- 09S ACCESSIBLE / VAN ACCESSIBLE PARKING SIGN
- 09U ACCESSIBLE PARKING SYMBOL
- 70G CONCRETE SLAB/SIDEWALK
- 70H OVERHEAD SHADE STRUCTURE
- 70J PARK SHELTER FOUNDATION / SLAB
- 70K PEDESTRIAN RAMP DETAIL
- 70L 2-BIKE BOLLARD BIKE RACK, MODEL #509-9159, SURFACE MOUNT, POWDER COATED HUNTER GREEN (WWW.THEPARKCATALOG.COM) OR APPROVED EQUAL
- 70M 8' WABASH VALLEY BENCH (MODEL #P9502) OR APPROVED EQUAL. BENCH SHALL BE PLASTIC COATED WITH BACK SUPPORT WITH FOREST GREEN SEATS/BACK AND BLACK FRAMES. SURFACE MOUNT TO CONCRETE SLAB.
- 70N PORT-A-POTTY WOOD ENCLOSURE
- 70P TENNIS COURT STRIPING
- 70Q PICKLEBALL COURT STRIPING DETAIL
- 70R PICKLEBALL NET POST DETAIL
- 70S COURT PAVING DETAIL
- 70T COURT FENCE DETAIL (4\"/>

3/19/18

CEI PROJECT NO.	INITIAL DATE	DPOR	ALC	PM	DES	DRW

Engineering Associates, Inc.

ENGINEERS • PLANNERS • SURVEYORS
LANDSCAPE ARCHITECTS • ENVIRONMENTAL SCIENTISTS

2025 Centre Pointe Blvd., Suite 210
Menota Heights, MN 55120

(651)432-8960
(651)432-1149

CITY OF BLOOMINGTON
3490 W. 109TH STREET
BLOOMINGTON, MN

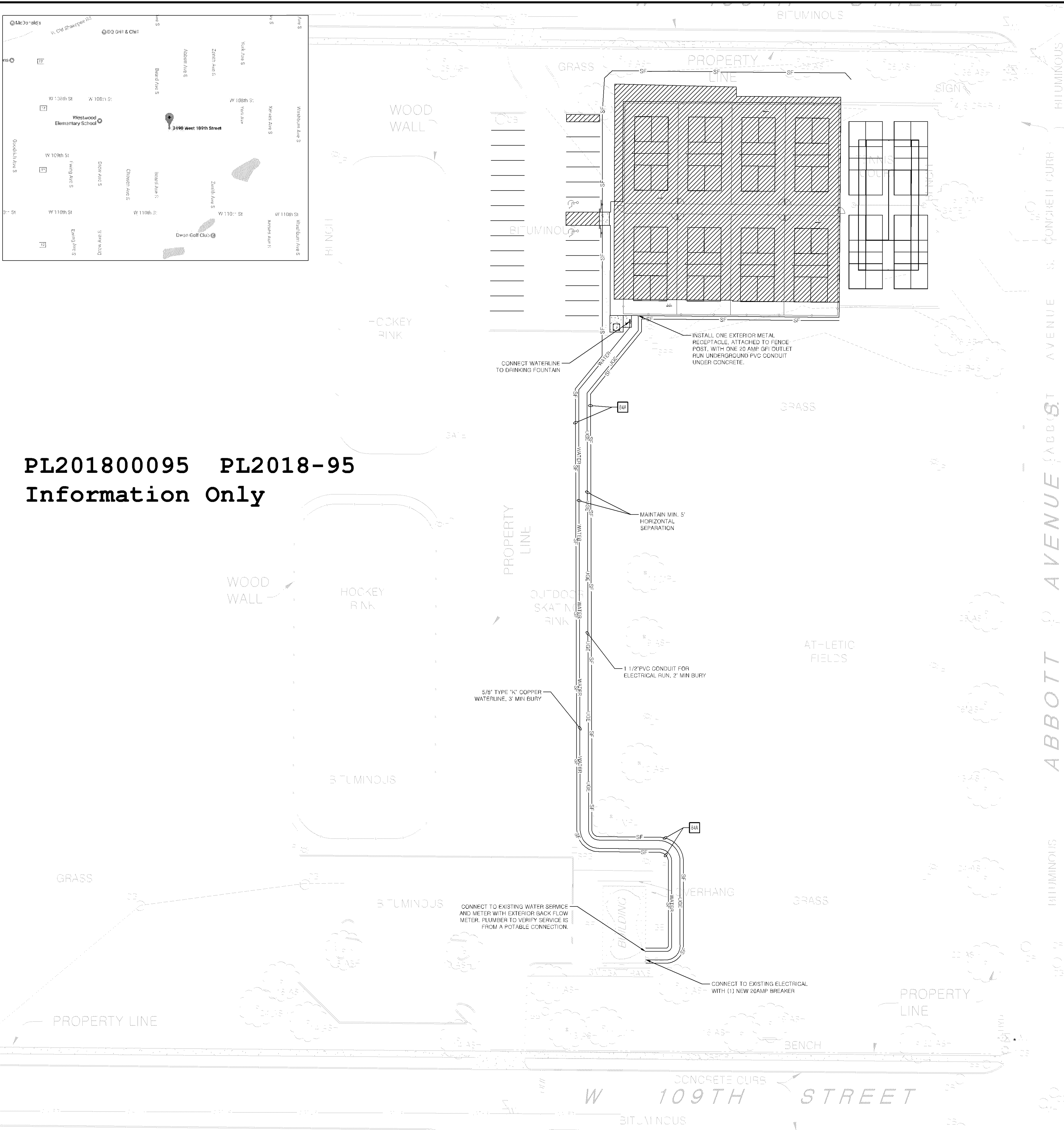
WESTWOOD PARK - SITE PLAN

REV DATE
3/19/18
REV-0

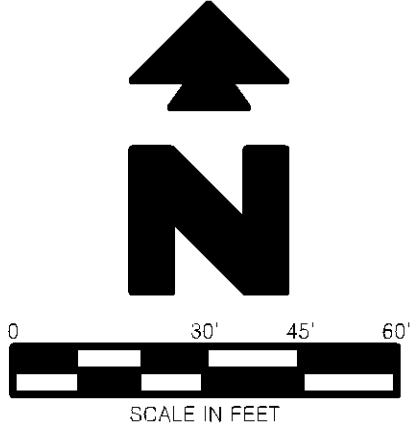
SHEET NO.
C2.1

JOB # 30576 DRAWING: 30576-WESTWOOD-PROJ.dwg LAST SAVED BY: LAUGUSTINE LOCATION: P:\3000\30576\0 Drawings\Design (Rev-0)\Westwood\30576-WESTWOOD-PROJ.dwg

JOB # 30576 DRAWING: 30576-WESTWOOD-PROJ.dwg LAST SAVED BY: LAUGUSTINE LOCATION: P:\3000\30576\01 Drawings\Design (Rev=0)\Westwood\30576-WESTWOOD-PROJ.dwg



PL201800095 PL2018-95
Information Only



PROPOSED LEGEND

- BOUNDARY LINE
- RIGHT OF WAY LINE
- LIMITS OF NEW TRAIL CONSTRUCTION
- LIMITS OF CONCRETE SLAB/SIDEWALK

GENERAL SITE NOTES

- ALL DIMENSIONS SHOWN ARE TO THE FACE OF CURB UNLESS OTHERWISE NOTED.
- ALL CURB RETURN RADI SHALL BE 2' OR 10', AS SHOWN TYPICAL ON THIS PLAN, UNLESS OTHERWISE NOTED.

GENERAL LANDSCAPE NOTES

- LOCATE ALL UTILITIES AND SITE LIGHTING CONDUITS BEFORE LANDSCAPE CONSTRUCTION BEGINS.
- NOTIFY ENGINEER OR DESIGNATED REPRESENTATIVE OF ANY LAYOUT DISCREPANCIES PRIOR TO ANY PLANTING.
- ALL DISTURBED AREAS SHALL BE SEEDED AS FOLLOWS:
GRASS SEED MIX: MINDOT 25-151 HIGH MAINTENANCE TURF, OR APPROVED EQUAL
- ALL SLOPES AND AREAS DISTURBED BY CONSTRUCTION SHALL BE GRADED SMOOTH AND FOUR INCHES OF TOPSOIL APPLIED. IF ADEQUATE TOPSOIL IS NOT AVAILABLE ON SITE, THE CONTRACTOR SHALL PROVIDE TOPSOIL, APPROVED BY THE OWNER, AS NEEDED. THE AREA SHALL BE SEEDED, FERTILIZED, MULCHED, WATERED AND MAINTAINED UNTIL HARDY GRASS GROWTH IS ESTABLISHED IN ALL AREAS. ANY RELOCATED TREES SHALL BE MAINTAINED UNTIL SUCH POINT AS TREE IS RE-ESTABLISHED. ANY AREAS DISTURBED FOR ANY REASON PRIOR TO FINAL ACCEPTANCE OF THE PROJECT SHALL BE CORRECTED BY THE CONTRACTOR AT NO ADDITIONAL COST TO THE OWNER.
- MAINTAIN 5' MIN. HORIZONTAL SEPARATION BETWEEN TREE PLANTINGS AND ALL UTILITIES.
- ACCEPTANCE OF GRADING AND SEEDINGS SHALL BE BY ENGINEER AND/OR OWNER. THE CONTRACTOR SHALL ASSUME MAINTENANCE RESPONSIBILITIES FOR A MINIMUM OF ONE (1) YEAR OR UNTIL SECOND CUTTING, WHICHEVER IS LONGER. MAINTENANCE SHALL INCLUDE WATERING, WEEDING, RESEEDING AND OTHER OPERATIONS NECESSARY TO KEEP ALL LAWN AREAS IN A THRIVING CONDITION. UPON FINAL ACCEPTANCE, OWNER SHALL ASSUME ALL MAINTENANCE RESPONSIBILITIES. AFTER LAWN AREAS HAVE GERMINATED, AREAS WHICH FAIL TO SHOW A UNIFORM STAND OF GRASS FOR ANY REASON WHATSOEVER SHALL BE RE-SEEDED REPEATEDLY UNTIL ALL AREAS ARE COVERED WITH A SATISFACTORY STAND OF GRASS. MINIMUM ACCEPTANCE OF SEEDED LAWN AREAS MAY INCLUDE SCATTERED BARE SPOTS, NONE OF WHICH ARE LARGER THAN 1 SQUARE FOOT, AND WHEN COMBINED DO NOT EXCEED 2% OF TOTAL SEEDED LAWN AREA.

GENERAL GRADING NOTES

- PRIOR TO INSTALLATION OF STORM SEWER, THE CONTRACTOR SHALL EXCAVATE, VERIFY, AND CALCULATE ALL CROSSINGS AND INFORM THE OWNER AND THE ENGINEER OF ANY CONFLICTS PRIOR TO CONSTRUCTION. THE ENGINEER WILL BE HELD HARMLESS IN THE EVENT THE ENGINEER IS NOT NOTIFIED OF DESIGN CONFLICTS.
- ALL SLOPES AND AREAS DISTURBED BY CONSTRUCTION SHALL BE GRADED SMOOTH AND 5" OF TOPSOIL APPLIED. IF ADEQUATE TOPSOIL IS NOT AVAILABLE ON SITE, THE CONTRACTOR SHALL PROVIDE TOPSOIL, AS NEEDED. THE AREA SHALL THEN BE SEEDED, FERTILIZED, MULCHED, WATERED AND MAINTAINED UNTIL HARDY GRASS GROWTH IS ESTABLISHED IN ALL AREAS. ANY AREAS DISTURBED FOR ANY REASON PRIOR TO FINAL ACCEPTANCE OF THE PROJECT SHALL BE CORRECTED BY THE CONTRACTOR AT NO ADDITIONAL COST TO THE OWNER.
- THE CONTRACTOR IS SPECIFICALLY CAUTIONED THAT THE LOCATION AND/OR ELEVATION OF EXISTING UTILITIES AS SHOWN ON THESE PLANS IS BASED ON RECORDS OF THE VARIOUS UTILITY COMPANIES, AND WHERE POSSIBLE, MEASUREMENTS TAKEN IN THE FIELD. THE INFORMATION IS NOT TO BE RELIED ON AS BEING EXACT OR COMPLETE. THE CONTRACTOR MUST CALL THE APPROPRIATE UTILITY COMPANY AT LEAST 48 HOURS BEFORE ANY EXCAVATION TO REQUEST EXACT FIELD LOCATION OF UTILITIES.
- CORE DRILL ANY NEW CONNECTION INTO EXISTING STORM SEWER. PROVIDE WATERTIGHT CONNECTION.
- CONNECT UNDERDRAIN TO STORM SEWER WHEN AVAILABLE.
- STORM SEWER ALTERATION PERMIT REQUIRED BY BLOOMINGTON UTILITIES, CONTACT 952-563-8777

SITE NOTES

- 4 INCH TRAFFIC WHITE LANE STRIPE (SEE LENGTH INDICATED AT SYMBOL).
- 4 INCH WIDE PAINTED WHITE STRIPES, 2.0 FOOT O.C. @ 45 DEGREES (SEE SIZE INDICATED AT SYMBOL).
- CONNECT TO EXISTING STORM DRAIN MANHOLE OR INLET.
- MATCH EXISTING PAVEMENT ELEVATIONS.
- TAPER CURB FROM 6 INCHES TO 0 INCHES OVER 2 FEET
- MODEL B4871-8K WITH BACKBOARD (WHITE), SUPPORT POST (BLACK) AND HOOP (ORANGE) MANUFACTURED BY BISON, INC. (WWW.BISONINC.COM) OR APPROVED EQUAL. GOAL ASSEMBLY SHALL BE 10' FIXED IN HEIGHT AND INSTALLED WITH A 60" DEEP 2" DIA. CONCRETE FOOTING, 5' BACK OF BASELINE
- 8' PICNIC TABLE MODEL #T5INF AND #T8INFHDOP BY WEBCOAT PRODUCTS (WWW.WEBCOAT.COM) OR APPROVED EQUAL. TABLE TO HAVE FOREST GREEN TOP AND SEATS WITH BLACK FRAME.
- NEW BASKETBALL COURT STRIPING, WHITE LINES.
- CONTRACTOR TO CONSTRUCT/INSTALL NEW 28' HEXAGON PARK SHELTER AND SLAB, RCP SHELTERS MODEL AS-HEX28-04 OR APPROVED EQUAL. SHELTER TO HAVE FOREST GREEN ROOF AND DARK BROWN SUPPORT POSTS.

SITE DETAILS

- 09S ACCESSIBLE / VAN ACCESSIBLE PARKING SIGN
- 09U ACCESSIBLE PARKING SYMBOL
- 70G CONCRETE SLAB/SIDEWALK
- 70H OVERHEAD SHADE STRUCTURE
- 70L PARK SHELTER FOUNDATION / SLAB
- 70K PEDESTRIAN RAMP DETAIL
- 70L 2-BIKE BOLLARD BIKE RACK, MODEL #509-9159, SURFACE MOUNT, POWDER COATED HUNTER GREEN (WWW.THEPARKCATALOG.COM) OR APPROVED EQUAL
- 70M 8' WABASH VALLEY BENCH (MODEL PP305D) OR APPROVED EQUAL. BENCH SHALL BE PLASTIC-COATED WITH BACK SUPPORT WITH FOREST GREEN SEATS/BACK AND BLACK FRAMES. SURFACE MOUNT TO CONCRETE SLAB.
- 70N PORT-A-POTTY WOOD ENCLOSURE
- 70P TENNIS COURT STRIPING
- 70Q PICKLEBALL COURT STRIPING DETAIL
- 70R PICKLEBALL NET POST DETAIL
- 70S COURT PAVING DETAIL
- 70T COURT FENCE DETAIL (4' & 8')
- 70U BASKETBALL COURT STRIPING DETAIL
- 70V COURT FENCE DETAIL (10')
- 70W TENNIS NET POST AND TIE DOWN DETAIL
- 70X INSTALL (1) MODEL 101455MFA MDF DRINKING FOUNTAIN OR APPROVED EQUAL. INSTALL WITH 10" 35 SURFACE CARRIER, SURFACE MOUNTED TO CONCRETE PAD. POWDER COATED GREEN IN COLOR WITH NO TEXTURE.
- 70Y DUAL COURT STRIPING DETAIL
- 70Z QUAD COURT STRIPING DETAIL
- 84A TEMPORARY SILT FENCE

30576
CEI PROJECT NO.

3/19/19
INITIAL DATE

ALC
DPOF

ALC
PM

AJR
DES

AJR
DRW

Engineering Associates, Inc.
ENGINEERS • PLANNERS • SURVEYORS
LANDSCAPE ARCHITECTS • ENVIRONMENTAL SCIENTISTS

2025 Centre Points Blvd., Suite 210
Mendota Heights, MN 55120

(651)432-8960
(651)432-1149

CITY OF BLOOMINGTON
3490 W. 109TH STREET
BLOOMINGTON, MN

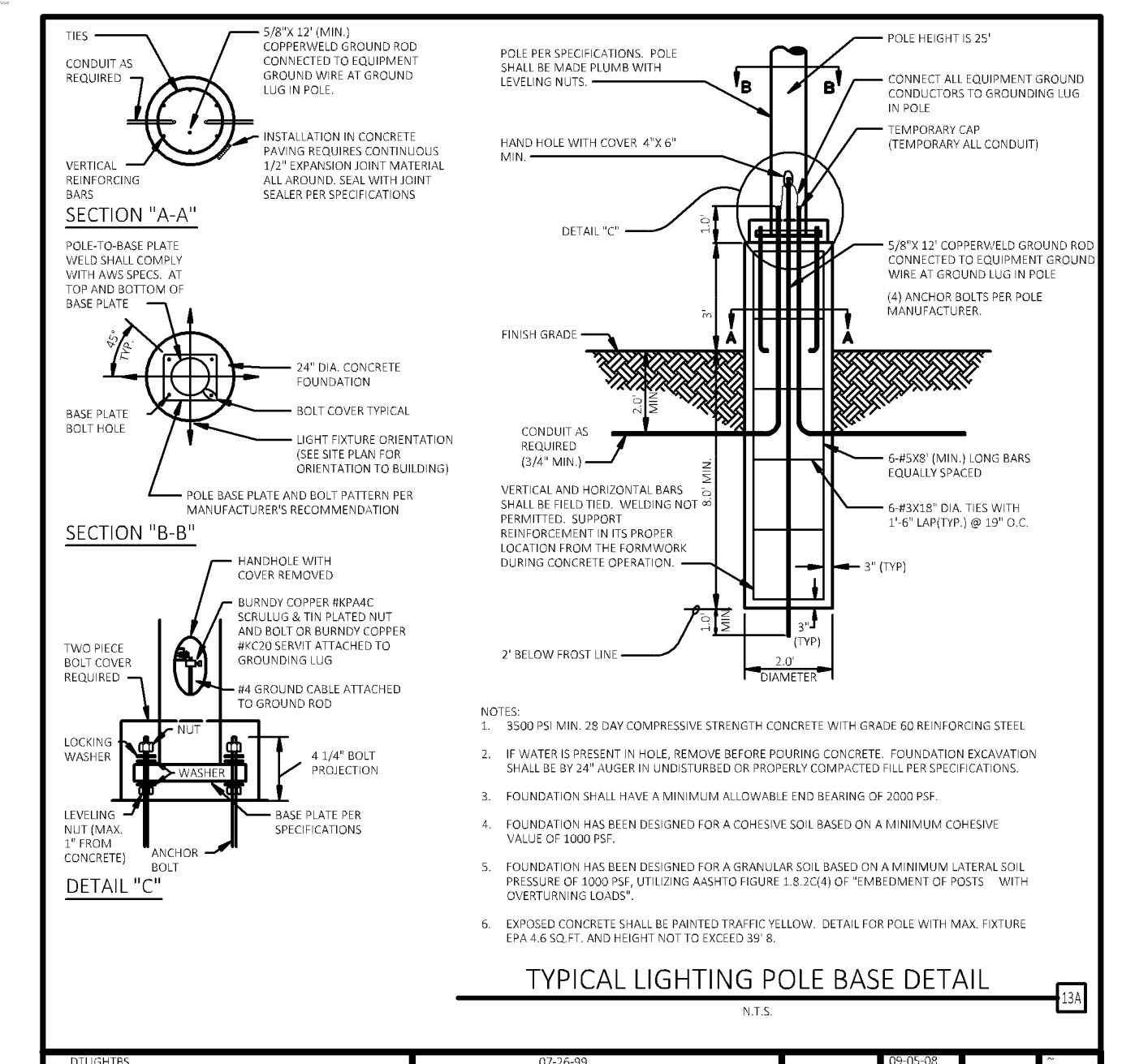
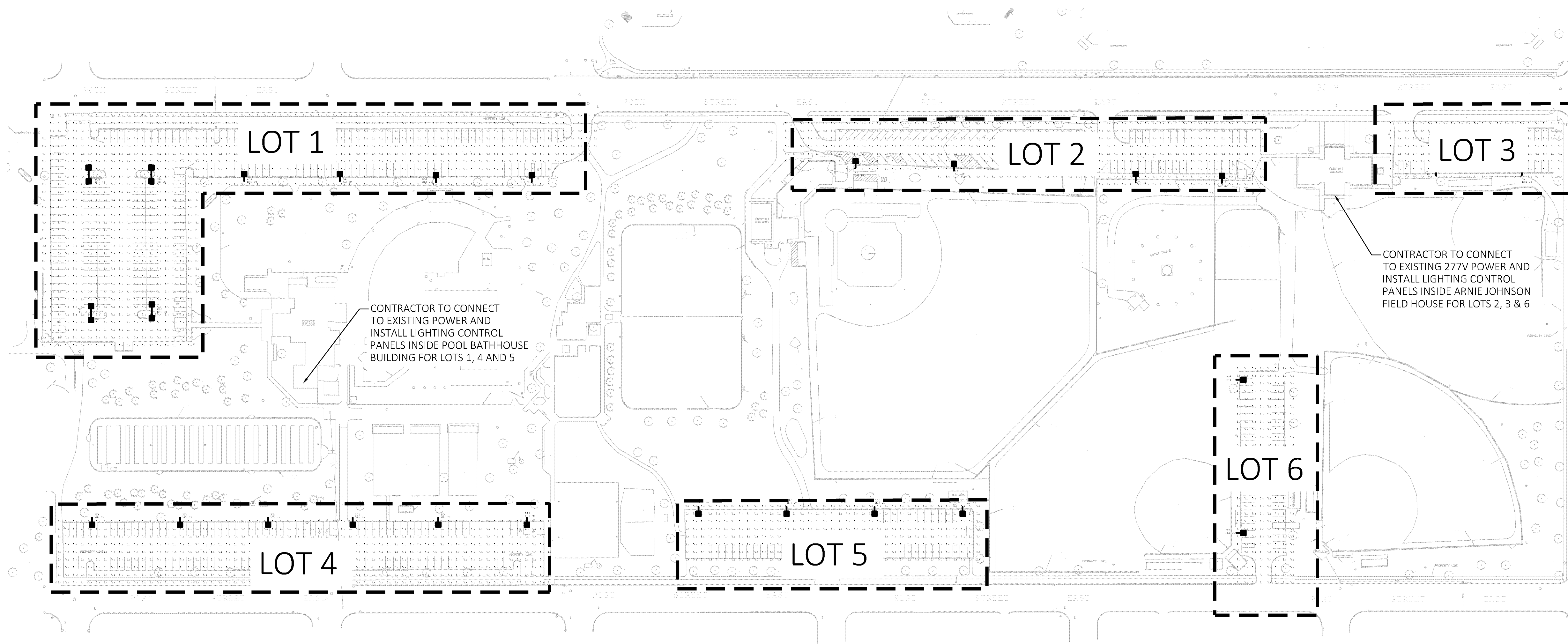
WESTWOOD PARK - OVERALL SITE PLAN
REV DATE
3/19/19
REV-0


SHEET NO.
C2.2

Calculation Summary							
Model	CalcType	Units	Avg	Max	Min	Avg/Min	Max/Min
Site	Illuminance	fc	1.44	5.1	0.1	14.40	51.00
Lot 1	Illuminance	fc	1.83	4.7	0.8	2.29	5.88
Lot 2	Illuminance	fc	1.34	2.9	0.6	2.23	4.83
Lot 3	Illuminance	fc	1.40	2.6	0.6	2.33	4.33
Lot 4	Illuminance	fc	1.20	2.3	0.5	2.40	4.60
Lot 5	Illuminance	fc	1.32	3.0	0.7	1.89	4.29
Lot 6	Illuminance	fc	2.11	3.7	1.0	2.11	3.70



PL201800095 PL2018-95 Information Only

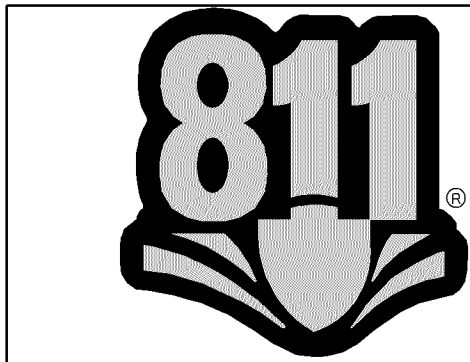


3/05/76	1/18/18	ALC	ALC	AIR	AIR
CEI PROJECT NO.	INITIAL DATE	DPOR	PM	DES	DRV
 Engineering Associates, Inc. <u>ENGINEERS • PLANNERS • SURVEYORS</u> <u>LANDSCAPE ARCHITECTS • ENVIRONMENTAL SCIENTISTS</u>					
2025 Centre Pointe Blvd., Suite 210 Mendota Heights, MN 55120				(651)452-8960 (651)452-1149	
CITY OF BLOOMINGTON					
301 EAST 90TH STREET BLOOMINGTON, MN					
VALLEY VIEW LIGHTING PLAN			REV DATE 3/19/18 REV-0	SHEET NO. C3	

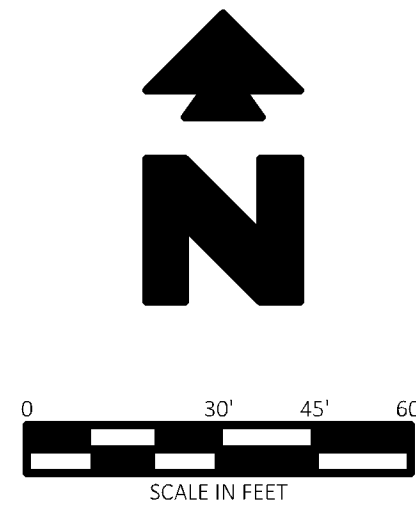


Luminaire Schedule								
Symbol	Qty	Label	Arrangement	Num. Lumens	LPF	Description	Lum. Watts	Total Watts
	2	R3	SINGLE	21864	0.810	USA R2K-PIED-111-R-2018C-700mA-NW-28FT MH	173.6	347.2
	2	R4	SINGLE	21869	0.810	USA R2K-PIED-111-R-2018C-700mA-NW-28FT MH	173.6	347.2
	4	R35	BACK-2-BACK	22046	0.810	USA R2K-PIED-V35-R-2018C-700mA-NW-28FT MH	174	695.6
	13	R34	SINGLE	19767	0.810	USA R2K-PIED-111-R-2018C-700mA-NW-28FT MH	173.6	2256.8

Calculation Summary							
Label	CalcType	Units	Avg	Max	Min	Avg/Min	Max/Min
Site	Illuminance	fc	1.44	5.1	0.1	14.40	51.00
Lot 1	Illuminance	fc	2.85	4.7	0.8	2.29	4.88
Lot 2	Illuminance	fc	1.34	2.9	0.6	2.23	4.83
Lot 3	Illuminance	fc	1.60	2.6	0.6	2.67	4.33
Lot 4	Illuminance	fc	1.20	2.3	0.5	2.40	4.60
Lot 5	Illuminance	fc	1.32	3.0	0.7	1.89	4.29
Lot 6	Illuminance	fc	2.11	3.7	0.8	2.11	4.70

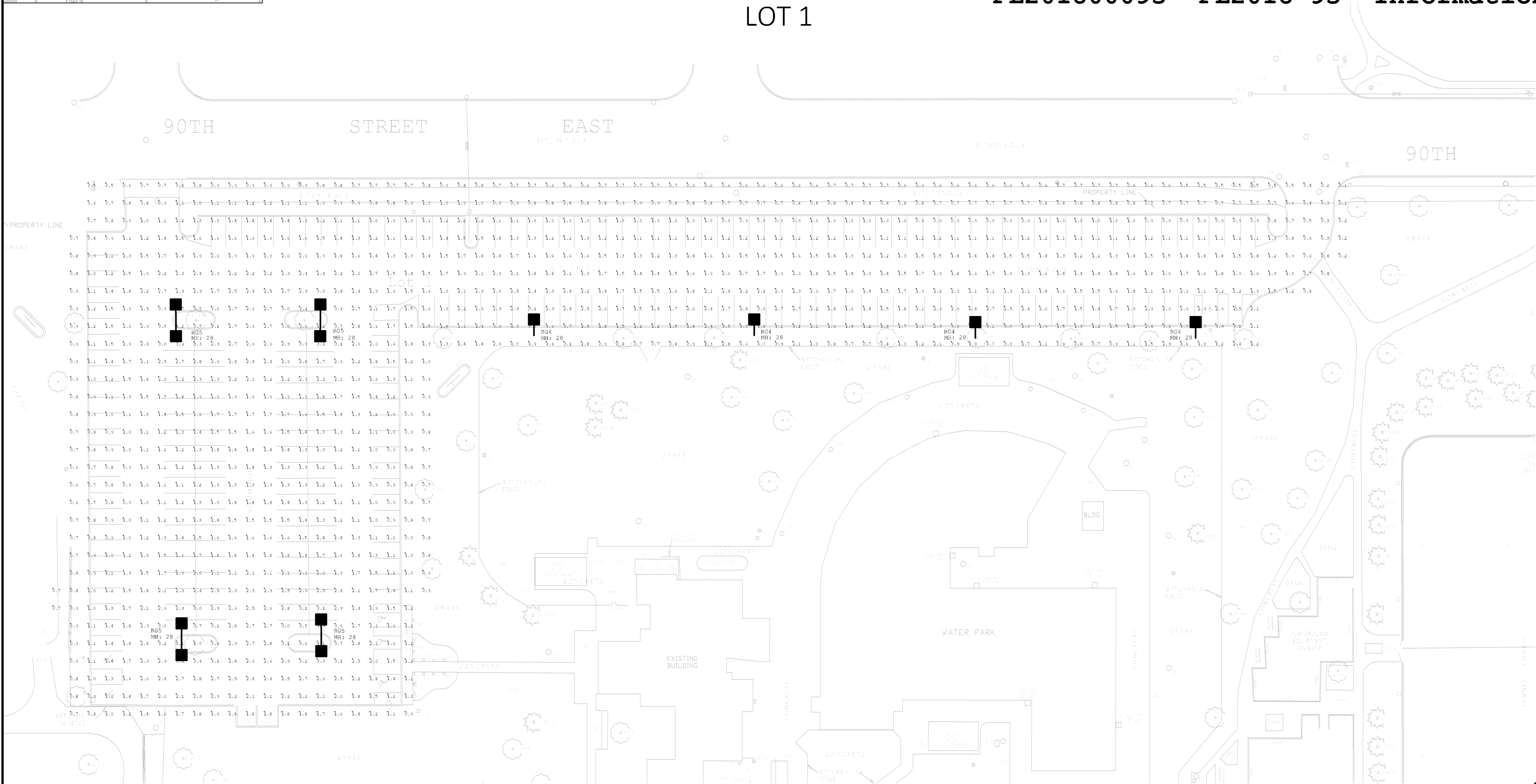


Know what's below.
Call before you dig.




PL201800095 PL2018-95 Information Only

LOT 1



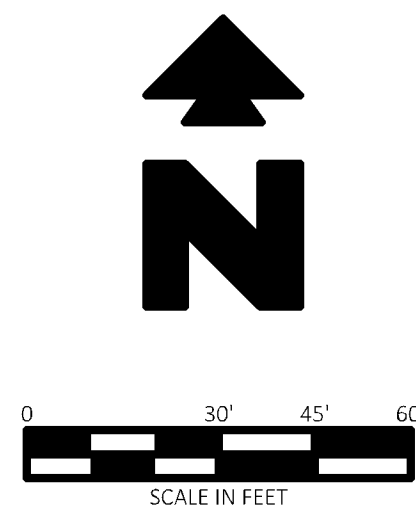
JOB # 30576 DRAWING: 30576-VL-GT-PROLONG LAST SAVED BY: JAUGUSTINE LOCATION: P:\3000\30576\0\Drawings\Design\Rev-0\Valley View Lighting\30576-VL-GT-PROLONG

30576	1/18/18	AIC	AIC	AIR	AIR
CEI PROJECT NO.	INITIAL DATE	DPOR	PM	DES	DRV
 Engineering Associates, Inc.					
ENGINEERS • PLANNERS • SURVEYORS LANDSCAPE ARCHITECTS • ENVIRONMENTAL SCIENTISTS					
2025 Centre Pointe Blvd., Suite 210 Mendota Heights, MN 55120				(651)452-8960 (651)452-1149	
CITY OF BLOOMINGTON					
301 EAST 90TH STREET BLOOMINGTON, MN					
LOT 1 LIGHTING			REV. DATE 3/19/18 REV-D	SHEET NO. C3.1	

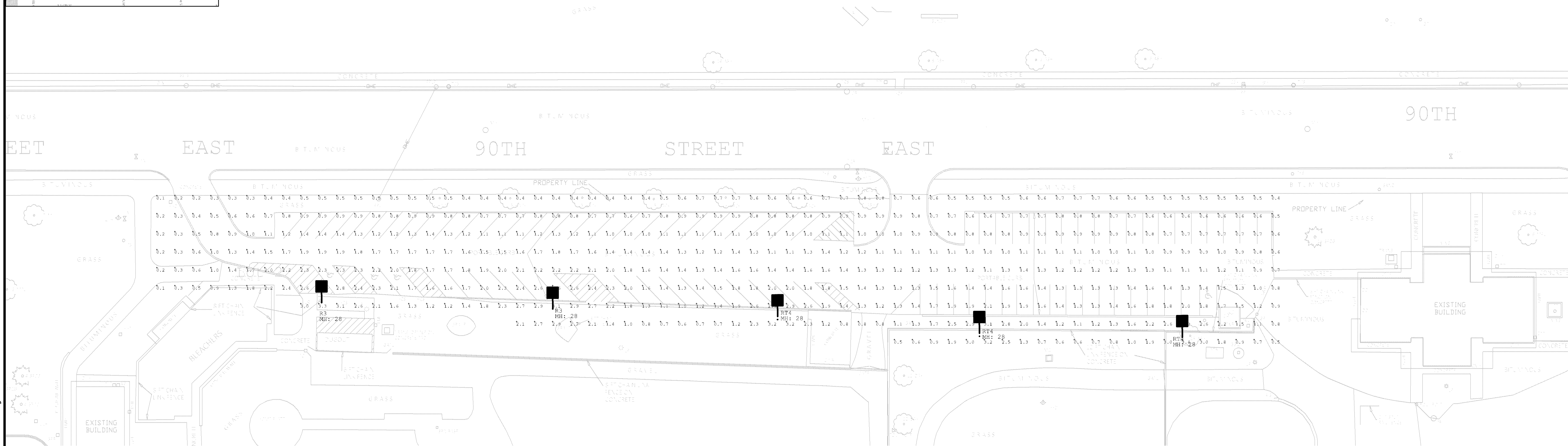
CEI PROJECT NO. 30576 INITIAL DATE 1/18/18 AIC DPOR AIC PM DES AIR DRW
CEI Engineering Associates, Inc.
ENGINEERS PLANNERS SURVEYORS
LANDSCAPE ARCHITECTS ENVIRONMENTAL SCIENTISTS
2025 Centre Pointe Blvd., Suite 210 (651)452-8960
Mendota Heights, MN 55120 (651)452-1149
CITY OF BLOOMINGTON
301 EAST 90TH STREET
BLOOMINGTON, MN
LOTS 2 AND 3 LIGHTING
REV DATE 3/19/18 REV-Q SHEET NO. C3.2
© 2018 CEI ENGINEERING ASSOCIATES, INC.



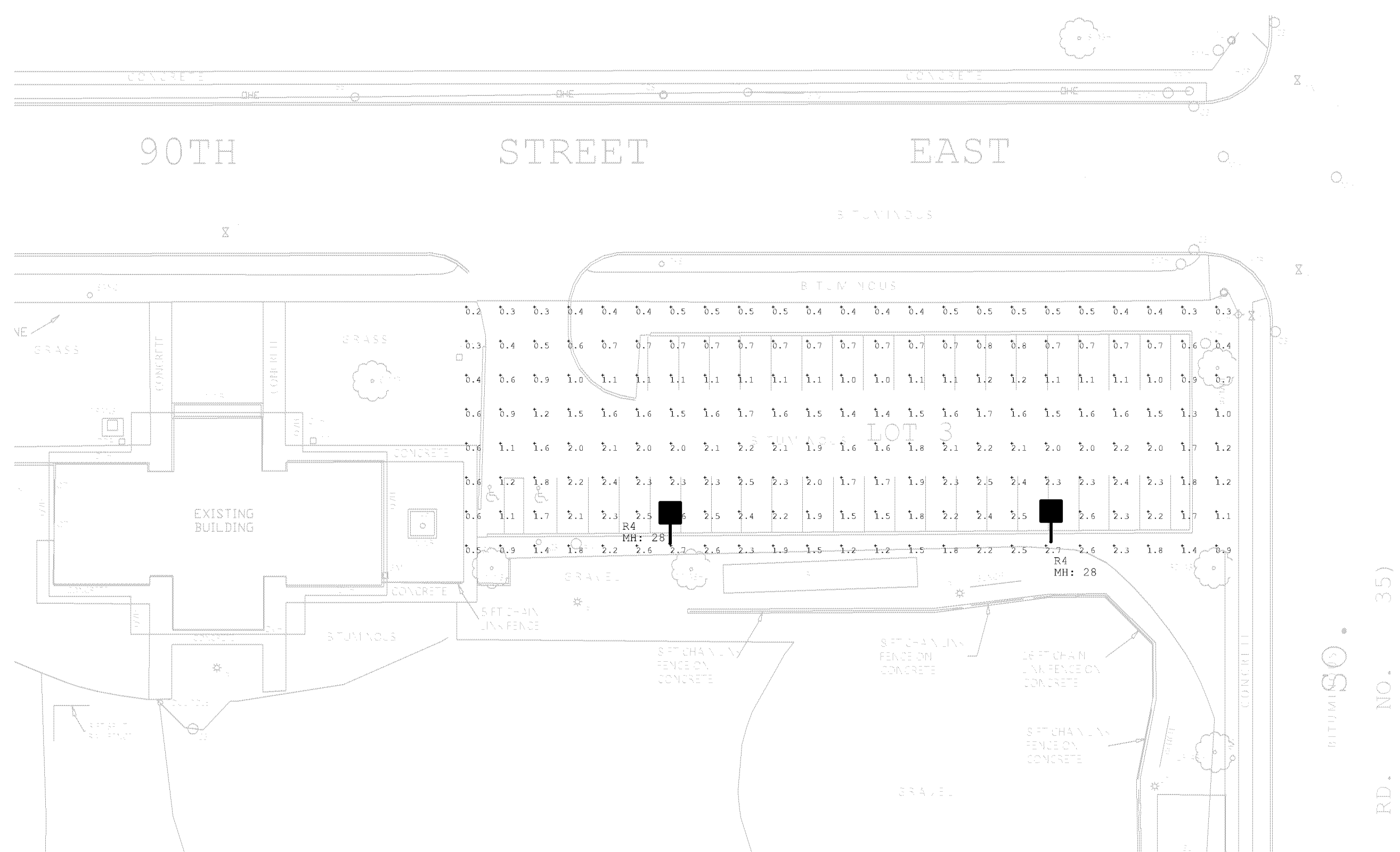
PL201800095 PL2018-95 Information Only



LOT 2



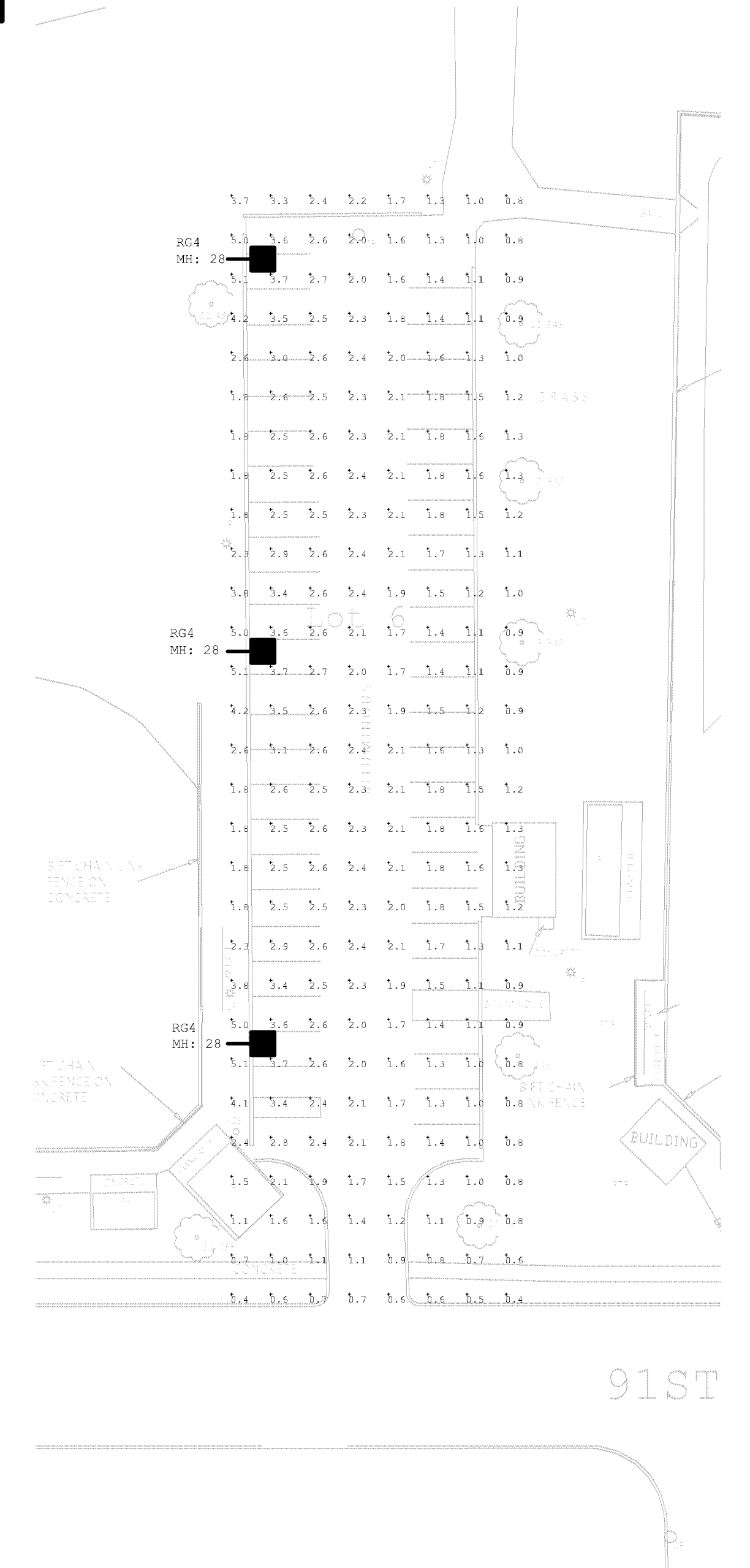
LOT 3




Luminaire Schedule							
Symbol	Qty	Label	Arrangement	Lum. Lumens	LF	Description	Total Watts
	2	R3	SINGLE	21864	0.810	USA R2R-PLED-11-B-ROLED-700mA-NW-28FT MH	173.6
	2	R4	SINGLE	21699	0.810	USA R2R-PLED-1V-ROLED-700mA-NW-28FT MH	173.6
	7	R6	SINGLE	29424	0.810	USA R2R-G-LED-1V-F-ROLED-700mA-NW-28FT MH	1820.7
	4	R5	BACK-BACK	22046	0.810	USA R2R-G-LED-VSO-W-ROLED-700mA-NW-28FT MH	174
	13	R7	SINGLE	19767	0.810	USA R2R-PLED-1V-F-ROLED-700mA-NW-28FT MH	173.6

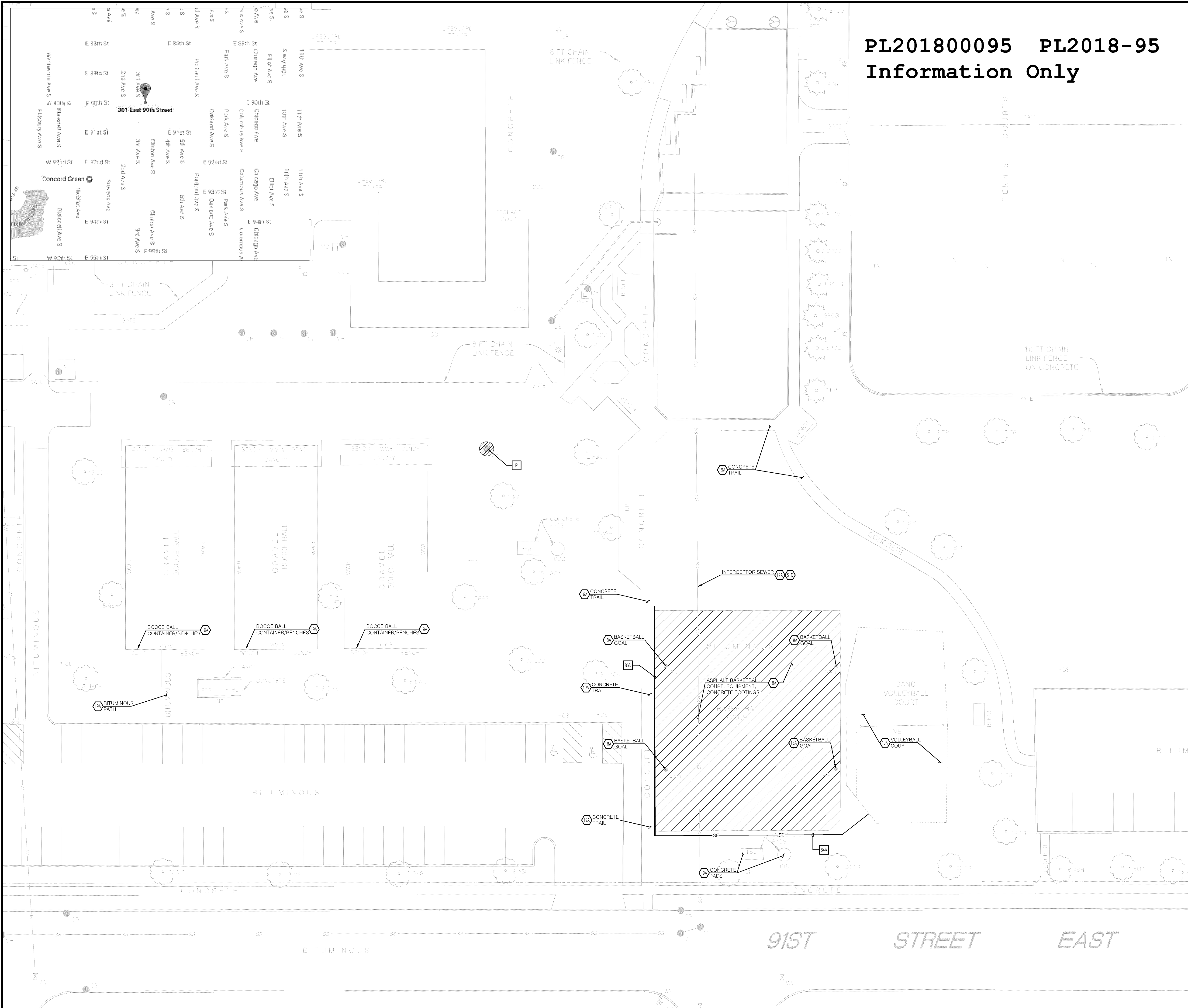
Calculation Summary							
Label	CalcType	Units	Avg	Max	Min	Avg/Min	Max/Min
Site	Illuminance	FC	1.44	5.1	0.1	14.40	51.00
Lot 1	Illuminance	FC	1.83	1.7	0.8	2.29	5.88
Lot 2	Illuminance	FC	1.34	2.9	0.6	2.23	4.83
Lot 3	Illuminance	FC	1.60	2.6	0.6	2.67	4.33
Lot 4	Illuminance	FC	1.20	2.3	0.5	2.40	4.60
Lot 5	Illuminance	FC	1.32	3.0	0.7	1.89	4.29
Lot 6	Illuminance	FC	2.11	3.7	1.0	2.11	3.70

Calculation Summary							
Label	CalcType	Units	Avg	Max	Min	Avg/Min	Max/Min
Site	Illuminance	FC	1.44	5.1	0.1	14.40	51.00
Est 1	Illuminance	FC	1.83	4.7	0.8	2.28	5.88
Est 2	Illuminance	FC	1.34	2.9	0.6	2.23	4.83
Est 3	Illuminance	FC	2.80	4.6	0.6	4.66	7.66
Est 4	Illuminance	FC	1.20	2.3	0.3	2.30	7.60
Est 5	Illuminance	FC	1.32	3.0	0.7	1.89	4.29
Est 6	Illuminance	FC	2.11	3.7	1.0	2.11	3.70



30576	1/18/18	ALC	ALC	AIR	AIR
CEI PROJECT NO.	INITIAL DATE	DPOR	PM	DES	DRV
 Engineering Associates, Inc. <u>ENGINEERS • PLANNERS • SURVEYORS</u> <u>LANDSCAPE ARCHITECTS • ENVIRONMENTAL SCIENTISTS</u>					
2025 Centre Pointe Blvd., Suite 210				(651)452-8960	
Mendota Heights, MN 55120				(651)452-1149	
CITY OF BLOOMINGTON					
301 EAST 90TH STREET					
BLOOMINGTON, MN					
LOTS 4, 5 AND 6 LIGHTING			REV DATE 3/3/18 REV-0	SHEET NO. C3.3	

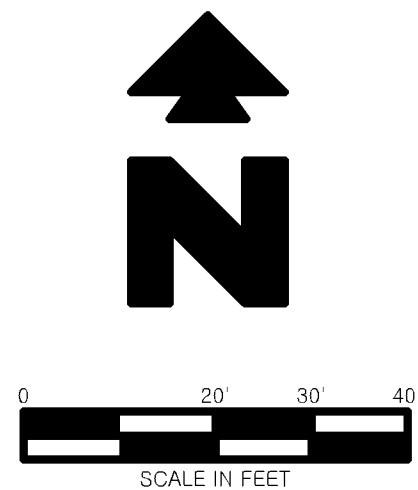
JOB # 30576 DRAWING: 30576-VP-PLAYFIELD-PROJ.dwg JOB # 30576 DRAWING: 30576-VP-PLAYFIELD-PROJ.dwg LAST SAVED BY: J.AUGUSTINE LOCATION: P. 30000 30576-VP-PLAYFIELD-PROJ.dwg



PL201800095 PL2018-95
Information Only



Know what's below.
Call before you dig.



DEMOLITION LEGEND

- LIMITS OF PAVEMENT AND PATH REMOVAL
- INLET PROTECTION (IP)

DEMOLITION NOTES

- 18A EXISTING TO BE REMOVED
- 18B EXISTING TO BE RELOCATED
- 19A EXISTING TO REMAIN
- 51B LIMITS OF SAWCUT AND PAVEMENT REMOVAL
- 51D PROTECT EXISTING STRUCTURES AND/OR PIPES DURING DEMOLITION AND CONSTRUCTION PHASES

EROSION CONTROL DETAILS

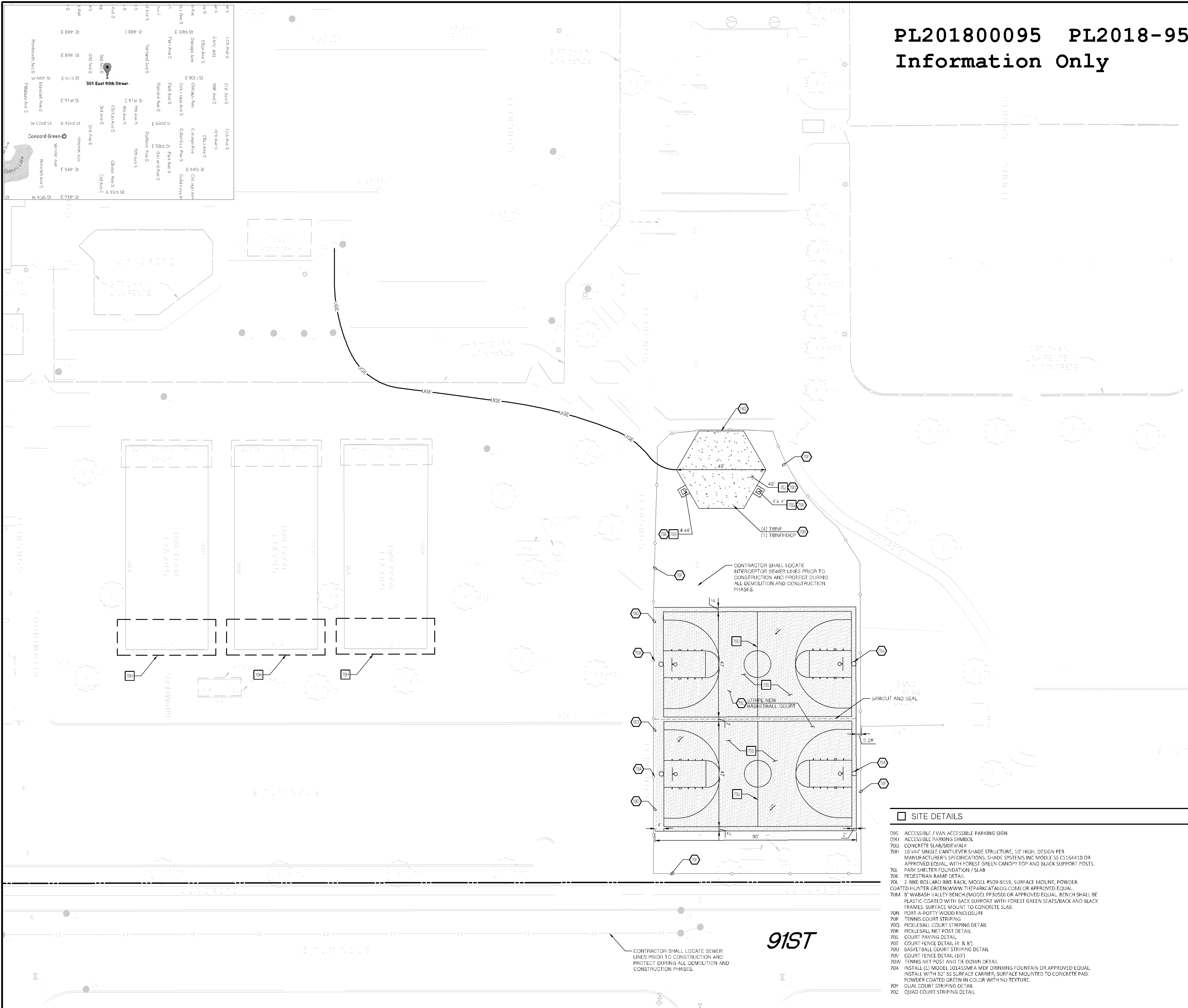
- 84A TEMPORARY SILT FENCE
- 86D STRAW WATTLE
- IP INLET PROTECTION

GENERAL DEMOLITION NOTES

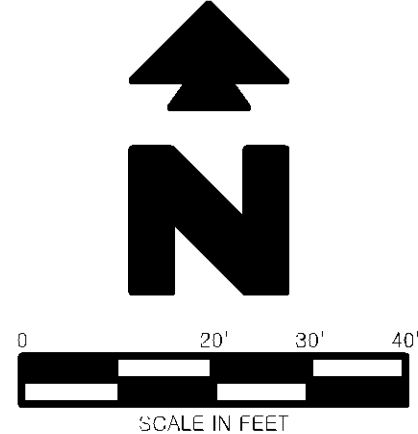
- A. THE SITE WORK FOR THIS PROJECT SHALL MEET OR EXCEED THE "CITY OF BLOOMINGTON, MINNESOTA STANDARD SPECIFICATIONS FOR CONSTRUCTION".
- B. CONTRACTOR SHALL BE RESPONSIBLE FOR REMOVAL OF THE EXISTING STRUCTURES, RELATED UTILITIES, PAVING, UNDERGROUND STORAGE TANKS AND ANY OTHER EXISTING IMPROVEMENTS AS NOTED. SEE SITE WORK SPECIFICATIONS.
- C. CONTRACTOR IS TO REMOVE AND DISPOSE OF ALL DEBRIS, RUBBISH AND OTHER MATERIALS RESULTING FROM PREVIOUS AND CURRENT DEMOLITION OPERATIONS. DISPOSAL WILL BE IN ACCORDANCE WITH ALL LOCAL, STATE AND/OR FEDERAL REGULATIONS GOVERNING SUCH OPERATIONS.
- D. THE GENERAL CONTRACTOR SHALL TAKE ALL PRECAUTIONS NECESSARY TO AVOID PROPERTY DAMAGE TO ADJACENT PROPERTIES DURING THE CONSTRUCTION PHASES OF THIS PROJECT. THE CONTRACTOR WILL BE HELD SOLELY RESPONSIBLE FOR ANY DAMAGES TO THE ADJACENT PROPERTIES OCCURRING DURING THE CONSTRUCTION PHASES OF THIS PROJECT.
- E. **ENGINEER'S NOTICE TO CONTRACTOR**
THE CONTRACTOR IS SPECIFICALLY CAUTIONED THAT THE LOCATION AND/OR ELEVATION OF EXISTING UTILITIES AS SHOWN ON THESE PLANS IS BASED ON RECORDS OF THE VARIOUS UTILITY COMPANIES, AND WHERE POSSIBLE, MEASUREMENTS TAKEN IN THE FIELD. THE INFORMATION IS NOT TO BE RELIED ON AS BEING EXACT OR COMPLETE. THE CONTRACTOR MUST CALL THE APPROPRIATE UTILITY COMPANY AT LEAST 48 HOURS BEFORE ANY EXCAVATION TO REQUEST EXACT FIELD LOCATION OF UTILITIES. IT SHALL BE THE RESPONSIBILITY OF THE CONTRACTOR TO RELOCATE ALL EXISTING UTILITIES WHICH CONFLICT WITH THE PROPOSED IMPROVEMENTS SHOWN ON THE PLANS.

30576	3/19/18	A/C	A/C	A/R	A/R
CEI PROJECT NO.	INITIAL DATE	DPOR	PM	DES	DRW
CEI Engineering Associates, Inc.					
ENGINEERS • PLANNERS • SURVEYORS LANDSCAPE ARCHITECTS • ENVIRONMENTAL SCIENTISTS					
2025 Centre Pointe Blvd., Suite 210 (651)452-8960 Mendota Heights, MN 55120 (651)452-1149					
CITY OF BLOOMINGTON					
301 EAST 90TH STREET BLOOMINGTON, MN					
VALLEY VIEW PLAYFIELD - DEMO PLAN		REV DATE 3/19/18 REV-0	SHEET NO. C4		

JOB # 30576 DRAWING: 30576-VPLAYFIELD-PROJ.dwg 30576-VPLAYFIELD-PROJ.dwg LAST SAVED BY: J.AUGUSTINE LOCATION: P:\30000\30576\Drawings\Design\Rev-0\Valley View Playfield-30576-VPLAYFIELD-PROJ.dwg



PL201800095 PL2018-95 Information Only



PROPOSED LEGEND

- BOUNDARY LINE
- RIGHT OF WAY LINE
- LIMITS OF NEW TRAIL CONSTRUCTION
- LIMITS OF CONCRETE SLAB/SIDEWALK

GENERAL SITE NOTES

- A. ALL DIMENSIONS SHOWN ARE TO THE FACE OF CURB UNLESS OTHERWISE NOTED.
- B. ALL CURB RETURN RADI SHALL BE 2' OR 10', AS SHOWN TYPICAL ON THIS PLAN, UNLESS OTHERWISE NOTED.

GENERAL LANDSCAPE NOTES

- A. LOCATE ALL UTILITIES AND SITE LIGHTING CONDUITS BEFORE LANDSCAPE CONSTRUCTION BEGINS.
- B. NOTIFY ENGINEER OR DESIGNATED REPRESENTATIVE OF ANY LAYOUT DISCREPANCIES PRIOR TO ANY PLANTING.
- C. ALL DISTURBED AREAS SHALL BE SEEDED AS FOLLOWS:
GRASS SEED MIX: MNDOT 25-151 HIGH MAINTENANCE TURF, OR APPROVED EQUAL
- D. ALL SLOPES AND AREAS DISTURBED BY CONSTRUCTION SHALL BE GRADED SMOOTH AND FOUR INCHES OF TOPSOIL APPLIED. IF ADEQUATE TOPSOIL IS NOT AVAILABLE ON SITE, THE CONTRACTOR SHALL PROVIDE TOPSOIL, APPROVED BY THE OWNER, AS NEEDED. THE AREA SHALL THEN BE SEEDED, FERTILIZED, MULCHED, WATERED AND MAINTAINED UNTIL HARDY GRASS GROWTH IS ESTABLISHED IN ALL AREAS. ANY RELOCATED TREES SHALL BE MAINTAINED UNTIL SUCH POINT AS TREE IS RE-ESTABLISHED. ANY AREAS DISTURBED FOR ANY REASON PRIOR TO FINAL ACCEPTANCE OF THE PROJECT SHALL BE CORRECTED BY THE CONTRACTOR AT NO ADDITIONAL COST TO THE OWNER.
- E. MAINTAIN 5' MIN. HORIZONTAL SEPARATION BETWEEN TREE PLANTINGS AND ALL UTILITIES.
- F. ACCEPTANCE OF GRADING AND SEEDINGS SHALL BE BY ENGINEER AND/OR OWNER. THE CONTRACTOR SHALL ASSUME MAINTENANCE RESPONSIBILITIES FOR A MINIMUM OF ONE (1) YEAR OR UNTIL SECOND CUTTING, WHICHEVER IS LONGER. MAINTENANCE SHALL INCLUDE WATERING, WEEDING, RESEEDING AND OTHER OPERATIONS NECESSARY TO KEEP ALL LAWN AREAS IN A THRIVING CONDITION. UPON FINAL ACCEPTANCE, OWNER SHALL ASSUME ALL MAINTENANCE RESPONSIBILITIES. AFTER LAWN AREAS HAVE GERMINATED, AREAS WHICH FAIL TO SHOW A UNIFORM STAND OF GRASS FOR ANY REASON WHATSOEVER SHALL BE RE-SEEDED REPEATEDLY UNTIL ALL AREAS ARE COVERED WITH A SATISFACTORY STAND OF GRASS. MINIMUM ACCEPTANCE OF SEEDED LAWN AREAS MAY INCLUDE SCATTERED BARE SPOTS, NONE OF WHICH ARE LARGER THAN 1 SQUARE FOOT, AND WHEN COMBINED DO NOT EXCEED 2% OF TOTAL SEEDED LAWN AREA.

GENERAL GRADING NOTES

- A. PRIOR TO INSTALLATION OF STORM SEWER, THE CONTRACTOR SHALL EXCAVATE, VERIFY, AND CALCULATE ALL CROSSINGS AND INFORM THE OWNER AND THE ENGINEER OF ANY CONFLICTS PRIOR TO CONSTRUCTION. THE ENGINEER WILL BE HELD HARMLESS IN THE EVENT THE ENGINEER IS NOT NOTIFIED OF DESIGN CONFLICTS.
- B. ALL SLOPES AND AREAS DISTURBED BY CONSTRUCTION SHALL BE GRADED SMOOTH AND 6" OF TOPSOIL APPLIED. IF ADEQUATE TOPSOIL IS NOT AVAILABLE ON SITE, THE CONTRACTOR SHALL PROVIDE TOPSOIL, AS NEEDED. THE AREA SHALL THEN BE SEEDED, FERTILIZED, MULCHED, WATERED AND MAINTAINED UNTIL HARDY GRASS GROWTH IS ESTABLISHED IN ALL AREAS. ANY AREAS DISTURBED FOR ANY REASON PRIOR TO FINAL ACCEPTANCE OF THE PROJECT SHALL BE CORRECTED BY THE CONTRACTOR AT NO ADDITIONAL COST TO THE OWNER.
- C. THE CONTRACTOR IS SPECIFICALLY CAUTIONED THAT THE LOCATION AND/OR ELEVATION OF EXISTING UTILITIES AS SHOWN ON THESE PLANS IS BASED ON RECORDS OF THE VARIOUS UTILITY COMPANIES, AND WHERE POSSIBLE, MEASUREMENTS TAKEN IN THE FIELD. THE INFORMATION IS NOT TO BE RELIED ON AS BEING EXACT OR COMPLETE. THE CONTRACTOR MUST CALL THE APPROPRIATE UTILITY COMPANY AT LEAST 48 HOURS BEFORE ANY EXCAVATION, TO REQUEST EXACT FIELD LOCATION OF UTILITIES.
- D. CORE DRILL ANY NEW CONNECTION INTO EXISTING STORM SEWER. PROVIDE WATERTIGHT CONNECTION.
- E. CONNECT UNDERDRAIN TO STORM SEWER WHEN AVAILABLE
- F. STORM SEWER ALTERATION PERMIT REQUIRED BY BLOOMINGTON UTILITIES, CONTACT 952-563-8777

SITE NOTES

- 12A 4 INCH TRAFFIC YELLOW LANE STRIPE (SEE LENGTH INDICATED AT SYMBOL)
- 12D 4 INCH WIDE PAINTED YELLOW STRIPES, 2.0 FOOT O.C. @ 45 DEGREES (SEE SIZE INDICATED AT SYMBOL)
- 18C CONNECT TO EXISTING STORM DRAIN MANHOLE OR INLET
- 18D MATCH EXISTING PAVEMENT ELEVATIONS
- 21B TAPER CURB FROM 6 INCHES TO 0 INCHES OVER 2 FEET
- 70A MODEL #847-1 OR WITH BACKBOARD (WHITE), SUPPORT POST (BLACK) AND HOOP (ORANGE) MANUFACTURED BY BISON, INC. (WWW.BISONINC.COM) OR APPROVED EQUAL. GOAL ASSEMBLY SHALL BE 10' FIXED IN HEIGHT AND INSTALLED WITH A 78" DEEP 1/2" DIA. CONCRETE FOOTING, 5' BACK OF BASELINE.
- 70B 8' PICNIC TABLE MODEL #TBINF AND #TBINF-HDCP BY WECOAT PRODUCTS (WWW.WECOAT.COM) OR APPROVED EQUAL. TABLE TO HAVE FOREST GREEN TOP AND SEATS WITH BLACK FRAME
- 70C NEW BASKETBALL COURT STRIPING, WHITE LINES
- 70D CONTRACTOR TO CONSTRUCT/INSTALL NEW 40' HEXAGON PARK SHELTER AND SLAB, RCP SHELTERS MODEL AS-HEX40-04 OR APPROVED EQUAL. SHELTER TO HAVE FOREST GREEN ROOF AND DARK BROWN SUPPORT POSTS
- 70E PREMIUM PARK GRILL, MODEL #E36-1040 (BLACK) (WWW.THEPARKCATALOG.COM) OR APPROVED EQUAL. SURFACE MOUNT TO CONCRETE PAD
- 70F 4' ORANGE SECURITY FENCE

SITE DETAILS

- 09S ACCESSIBLE / VAN ACCESSIBLE PARKING SIGN
- 09U ACCESSIBLE PARKING SYMBOL
- 70G CONCRETE SLAB/SIDEWALK
- 70H 16'x44" SINGLE CANTILEVER SHADE STRUCTURE, 10' HIGH, DESIGN PER MANUFACTURER'S SPECIFICATIONS, SHADE SYSTEMS INC. MODEL SS-CS164410 OR APPROVED EQUAL, WITH FOREST GREEN CANOPY TOP AND BLACK SUPPORT POSTS.
- 70J PARK SHELTER FOUNDATION / SLAB
- 70K PEDESTRIAN RAMP DETAIL
- 70L 2' BIKE ROLL AND BIKE RACK, MODEL #509-9159, SURFACE MOUNT, POWDER COATED HUNTER GREEN (WWW.THEPARKCATALOG.COM) OR APPROVED EQUAL
- 70M 8' WABASH VALLEY BENCH (MODEL PP305D) OR APPROVED EQUAL. BENCH SHALL BE PLASTIC COATED WITH BLACK SUPPORT WITH FOREST GREEN SEATS/BACK AND BLACK FRAMES. SURFACE MOUNT TO CONCRETE SLAB
- 70N PORT-A-POTTY WOOD ENCLOSURE
- 70P TENNIS COURT STRIPING
- 70Q PICKLEBALL COURT STRIPING DETAIL
- 70R PICKLEBALL NET POST DETAIL
- 70S COURT PAVING DETAIL
- 70T COURT FENCE DETAIL (4' & 8')
- 70U BASKETBALL COURT STRIPING DETAIL
- 70V COURT FENCE DETAIL (10')
- 70W TENNIS NET POST AND TIE DOWN DETAIL
- 70X INSTALL (1) MODEL 101455MFA M/F DRINKING FOUNTAIN OR APPROVED EQUAL. INSTALL WITH 10" SS SURFACE CARRIER, SURFACE MOUNTED TO CONCRETE PAD. POWDER COATED GREEN IN COLOR WITH NO TEXTURE.
- 70Y DUAL COURT STRIPING DETAIL
- 70Z QUAD COURT STRIPING DETAIL

30576
CEI PROJECT NO.

3/19/18
INITIAL DATE

ALC
DPOF

ALC
PM

AJR
DES

AJP
DRW

Engineering Associates, Inc.
ENGINEERS • PLANNERS • SURVEYORS
LANDSCAPE ARCHITECTS • ENVIRONMENTAL SCIENTISTS

2025 Centre Pointe Blvd., Suite 210
Minnetonka Heights, MN 55120
(651)432-8960
(651)432-1149

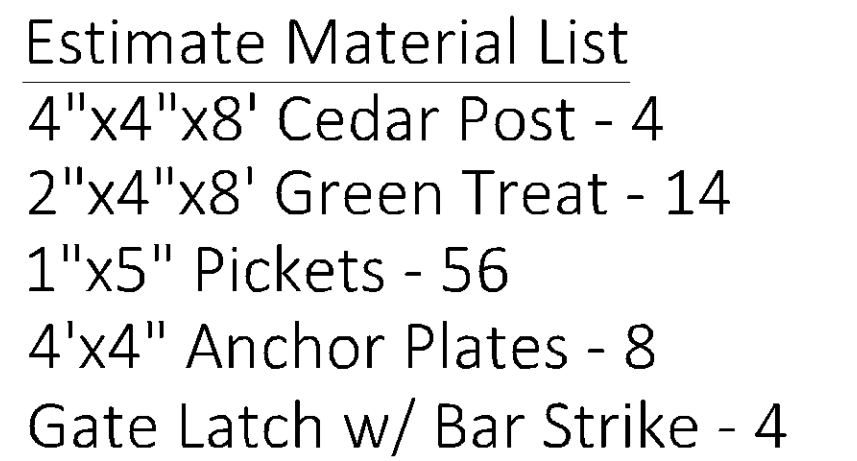
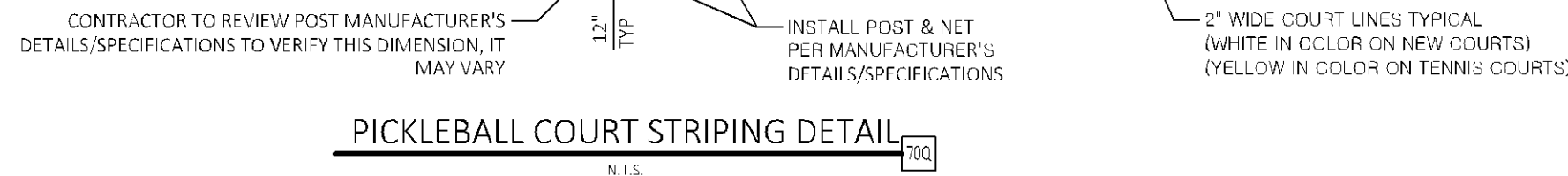
CITY OF BLOOMINGTON
301 EAST 90TH STREET
BLOOMINGTON, MN

VALLEY VIEW PLAYFIELD - SITE PLAN
REV DATE
3/19/18
REV-0

REV DATE
3/19/18
REV-0

SHEET NO.
C4.1

PL201800095 PL2018-95 Information Only



PORT-A-POTTY WOOD ENCLOSURE



ENGINEERS • PLANNERS • SURVEYORS
LANDSCAPE ARCHITECTS • ENVIRONMENTAL SCIENTISTS

51)452-8960
51)452-1149

BLOOMINGTON MN

MN

DATE

REV-0	00.1
-------	------