

PL201700216
PL2017-216

BLOOMINGTON CENTRAL STATION 6TH ADDITION

C.R. DOC. NO. _____

KNOW ALL PERSONS BY THESE PRESENTS: That Bloomington Central Station, LLC, a Delaware limited liability company, owner of the following described property:

Outlot B, BLOOMINGTON CENTRAL STATION 4TH ADDITION.

And

Outlot N, BLOOMINGTON CENTRAL STATION 2ND ADDITION.

Has caused the same to be surveyed and platted as BLOOMINGTON CENTRAL STATION 6TH ADDITION and does hereby dedicate to the public for public use the drainage and utility easements as created by this plat.

In witness whereof said Bloomington Central Station, LLC, a Delaware limited liability company, has caused these presents to be signed by its proper officer this ____ day of _____, 20____.

SIGNED: Bloomington Central Station, LLC, a Delaware limited liability company
By MG Bloomington, LLC, a Delaware limited liability company, its manager

By: _____, its president
Thomas J. McGough Jr.

STATE OF _____
COUNTY OF _____

The foregoing instrument was acknowledged before me this ____ day of _____, 20____ by Thomas J. McGough Jr., the president of MG Bloomington, LLC, a Delaware limited liability company, the manager of Bloomington Central Station, LLC, a Delaware limited liability company, on behalf of said company.

Notary Public, _____ County, _____
My Commission Expires _____

I, Mark S. Hanson, do hereby certify that this plat was prepared by me or under my direct supervision; that I am a duly Licensed Land Surveyor in the State of Minnesota; that this plat is a correct representation of the boundary survey; that all mathematical data and labels are correctly designated on this plat; that all monuments depicted on this plat have been or will be correctly set within one year; that all water boundaries and wet lands as defined in Minnesota Statutes, Section 505.01, Subd. 3, as of the date of this certificate are shown and labeled on this plat; and all public ways are shown and labeled on the plat.

Dated this ____ day of _____, 20____.

Mark S. Hanson, Land Surveyor
Minnesota License No. 15480

STATE OF MINNESOTA
COUNTY OF _____

This instrument was acknowledged before me this ____ day of _____, 20____, by Mark S. Hanson.

Notary Public, _____ County, Minnesota
My Commission Expires _____

BLOOMINGTON, MINNESOTA

This plat of BLOOMINGTON CENTRAL STATION 6TH ADDITION was approved and accepted by the City Council of Bloomington, Minnesota, at a regular meeting thereof held this ____ day of _____, 20____, and said plat is in compliance with the provisions of Minnesota Statutes, Section 505.03, Subd. 2.

CITY COUNCIL OF BLOOMINGTON, MINNESOTA

By _____ Mayor By _____ City Manager

RESIDENT AND REAL ESTATE SERVICES, Hennepin County, Minnesota

I hereby certify that taxes payable in 20____ and prior years have been paid for land described on this plat, dated this ____ day of _____, 20____.

Mark V. Chapin, County Auditor By _____ Deputy

SURVEY DIVISION, Hennepin County, Minnesota

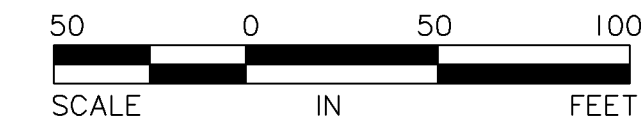
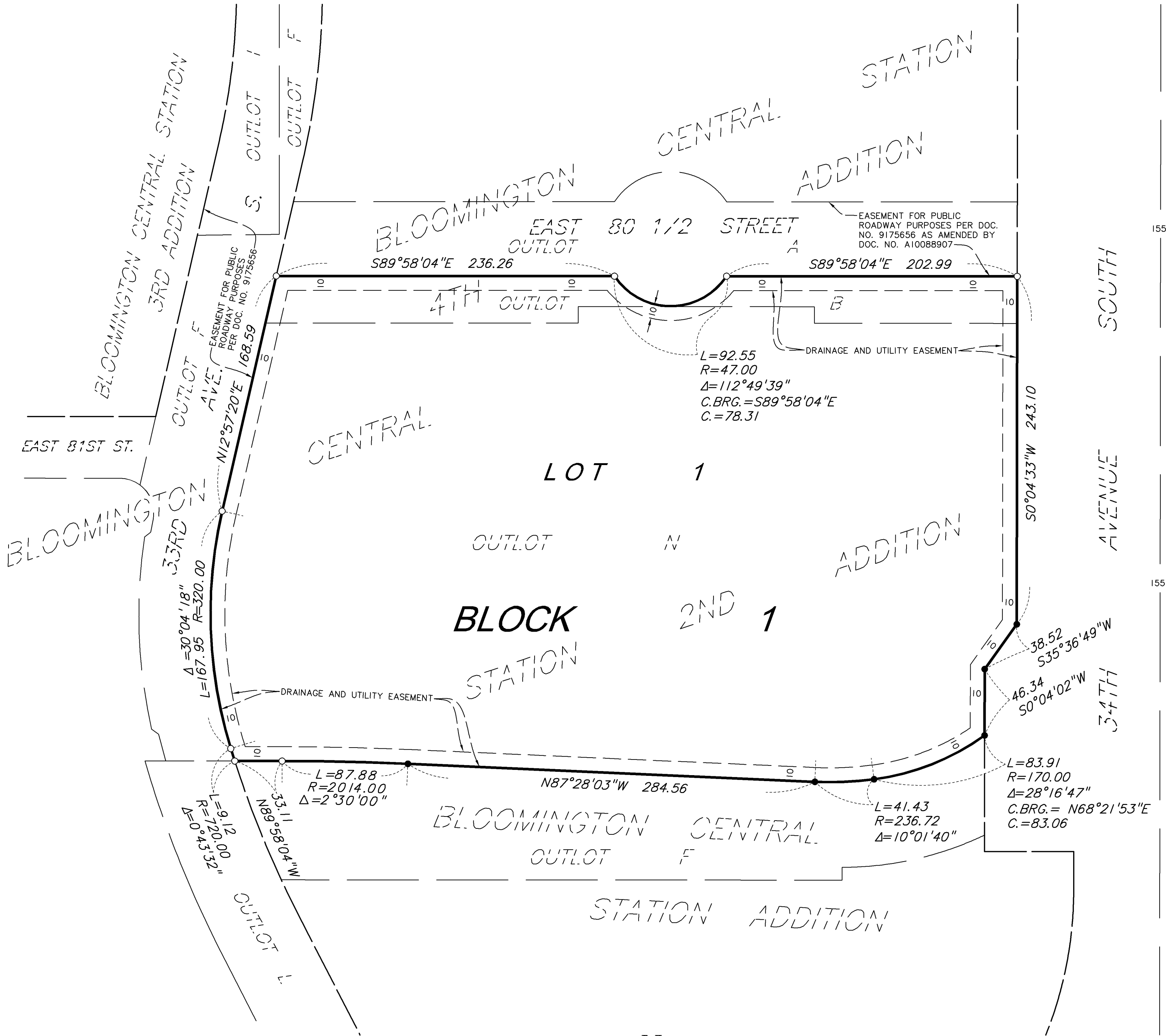
Pursuant to Minnesota Statutes, Sec. 383B.565 (1969), this plat has been approved this ____ day of _____, 20____.

Chris F. Mavis, County Surveyor By _____

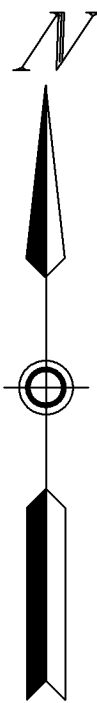
COUNTY RECORDER, Hennepin County, Minnesota

I hereby certify that the within plat of BLOOMINGTON CENTRAL STATION 6TH ADDITION was recorded in this office this ____ day of _____, 20____ at _____ o'clock ____M.

Martin McCormick, County Recorder By _____ Deputy



- Denotes found iron pipe with cap marked PLS 18418, unless otherwise noted.
- Denotes 1/2 inch by 14 inch iron pipe set and marked with license no. 15480.



PRELIMINARY

Date: 9/28/2017

For the purposes of this plat, the most easterly line of of Outlot N, BLOOMINGTON CENTRAL STATION 2ND ADDITION is assumed to have a bearing of S0°04'33\"W.