

FILE NO. 22018

17.146

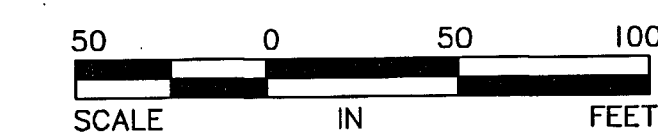
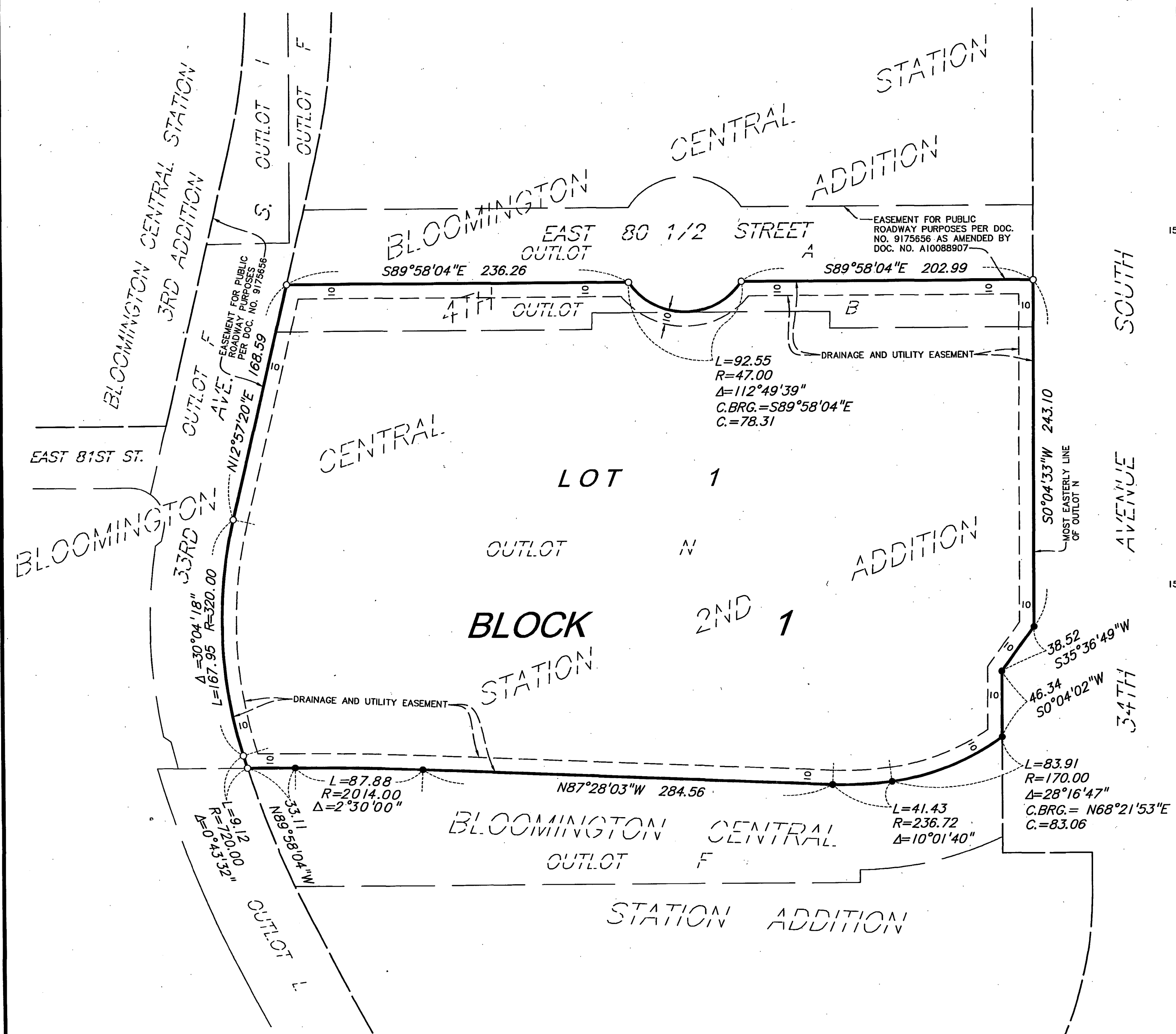
OFFICIAL PLAT

BLOOMINGTON CENTRAL STATION 6TH ADDITION

10602

C.R. DOC. NO. 10511753

PL201700216
PL2017-216



- Denotes found 1/2 inch rebar with cap marked PLS 18418, unless otherwise noted.
- Denotes 1/2 inch by 14 inch iron pipe set and marked with license no. 15480.

For the purposes of this plat, the most easterly line of of Outlot N, BLOOMINGTON CENTRAL STATION 2ND ADDITION is assumed to have a bearing of S0°04'33"W.

KNOW ALL PERSONS BY THESE PRESENTS: That Bloomington Central Station, LLC, a Delaware limited liability company, owner of the following described property:

Outlot B, BLOOMINGTON CENTRAL STATION 4TH ADDITION.

And

Outlot N, BLOOMINGTON CENTRAL STATION 2ND ADDITION.

Has caused the same to be surveyed and platted as BLOOMINGTON CENTRAL STATION 6TH ADDITION and does hereby dedicate to the public for public use the drainage and utility easements as created by this plat.

In witness whereof said Bloomington Central Station, LLC, a Delaware limited liability company, has caused these presents to be signed by its proper officer this 28th day of November, 2017.

SIGNED: Bloomington Central Station, LLC, a Delaware limited liability company
By MG Bloomington, LLC, a Delaware limited liability company, its manager

By: Thomas J. McGough Jr., its president

STATE OF Minnesota
COUNTY OF Ramsey

The foregoing instrument was acknowledged before me this 28th day of November, 2017, by Thomas J. McGough Jr., the president of MG Bloomington, LLC, a Delaware limited liability company, the manager of Bloomington Central Station, LLC, a Delaware limited liability company, on behalf of said company.

Catherine J. Cleveland
Catherine J. Cleveland
Notary Public, Ramsey County, Minnesota
My Commission Expires 1-31-2026

I, Mark S. Hanson, do hereby certify that this plat was prepared by me or under my direct supervision; that I am a duly Licensed Land Surveyor in the State of Minnesota; that this plat is a correct representation of the boundary survey; that all mathematical data and labels are correctly designated on this plat; that all monuments depicted on this plat have been or will be correctly set within one year; that all water boundaries and wet lands as defined in Minnesota Statutes, Section 505.01, Subd. 3, as of the date of this certificate are shown and labeled on this plat; and all public ways are shown and labeled on the plat.

Dated this 21st day of November, 2017.

Mark S. Hanson
Mark S. Hanson, Land Surveyor
Minnesota License No. 15480

STATE OF MINNESOTA
COUNTY OF Hennepin

This instrument was acknowledged before me this 21st day of November, 2017, by Mark S. Hanson.

Laura J. Swift
Laura J. Swift
Notary Public, Hennepin County, Minnesota
My Commission Expires January 31, 2022

BLOOMINGTON, MINNESOTA

This plat of BLOOMINGTON CENTRAL STATION 6TH ADDITION was approved and accepted by the City Council of Bloomington, Minnesota, at a regular meeting thereof held this 4th day of December, 2017, and said plat is in compliance with the provisions of Minnesota Statutes, Section 505.03, Subd. 2.

CITY COUNCIL OF BLOOMINGTON, MINNESOTA

By Bob Thurston Mayor By Joe O'Connell City Manager

RESIDENT AND REAL ESTATE SERVICES, Hennepin County, Minnesota

I hereby certify that taxes payable in 2017 and prior years have been paid for land described on this plat, dated this 19th day of December, 2017.

Mark V. Chapin, County Auditor By Eric Hiller Deputy

SURVEY DIVISION, Hennepin County, Minnesota

Pursuant to Minnesota Statutes, Sec. 383B.565 (1969), this plat has been approved this 19th day of December, 2017.

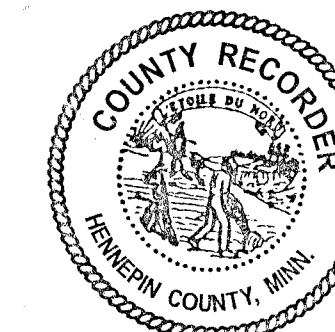
Chris F. Mavis, County Surveyor By Eric Hiller

COUNTY RECORDER, Hennepin County, Minnesota

I hereby certify that the within plat of BLOOMINGTON CENTRAL STATION 6TH ADDITION was recorded in this office this 19th day of December, 2017, at 10:17 o'clock A.M.

Martin McCormick, County Recorder By Eric Hiller Deputy

SUNDE
LAND SURVEYING



STATE OF MINNESOTA, COUNTY OF HENNEPIN
Certified to be a true and correct copy of the
original on file and of record in my office

JAN 22 2018

Martin McCormick, County Recorder
By Eric Hiller Deputy