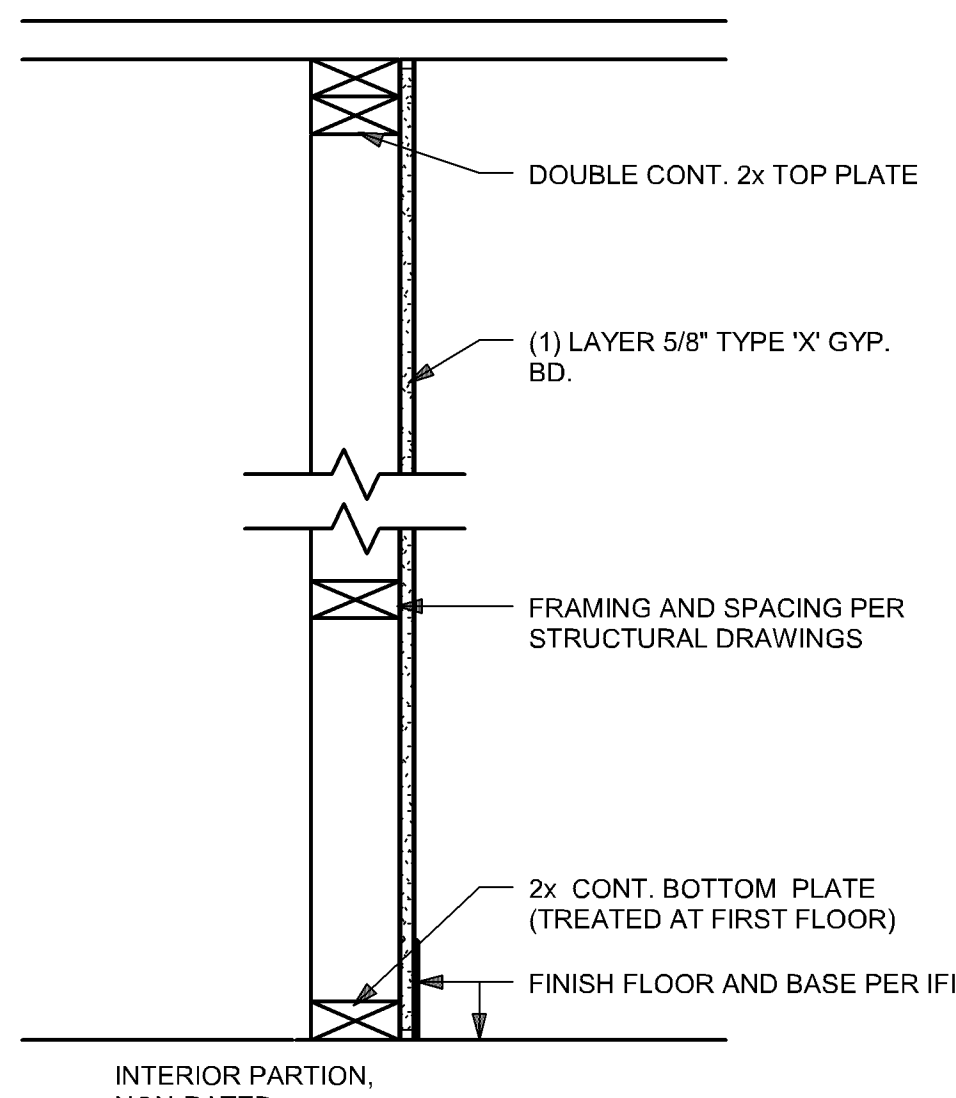


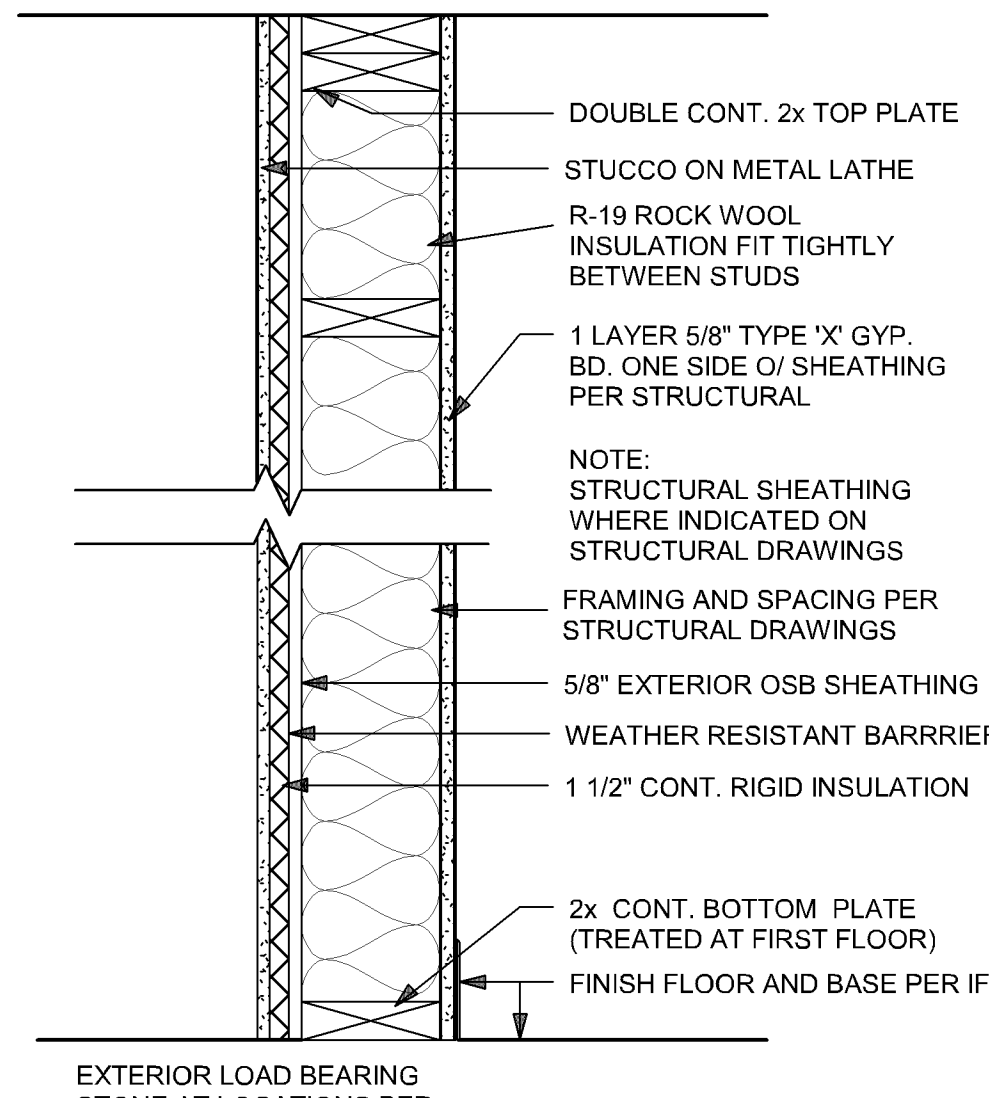
PARTITION TYPE: **X** 2 x 6 STUDS
2 - HR RATED

UL DESIGN NO.: U308
GA FILE NO.:
STC RATING:



PARTITION TYPE: **B** 2 x 4 STUDS
NON-BEARING, INTERIOR PARTITION

UL DESIGN NO.: U305
GA FILE NO.: WP-3510
STC RATING: 35-38



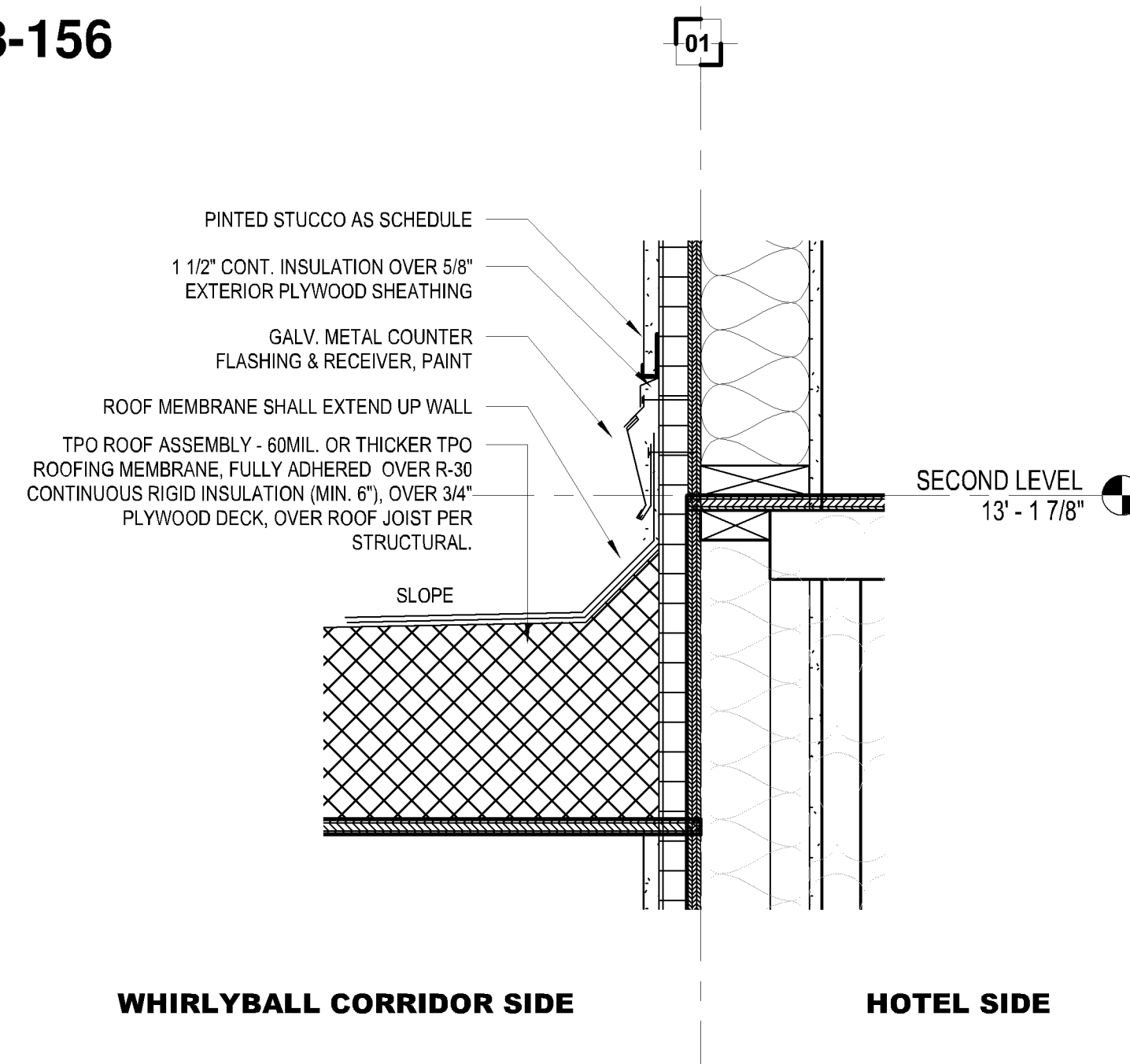
PARTITION TYPE: **P** 2 x 6 STUDS
1 - HR RATED

UL DESIGN NO.: U356
GA FILE NO.:
STC RATING:

WALL PARTITION TYPES AT WHIRLYBALL CONNECTION

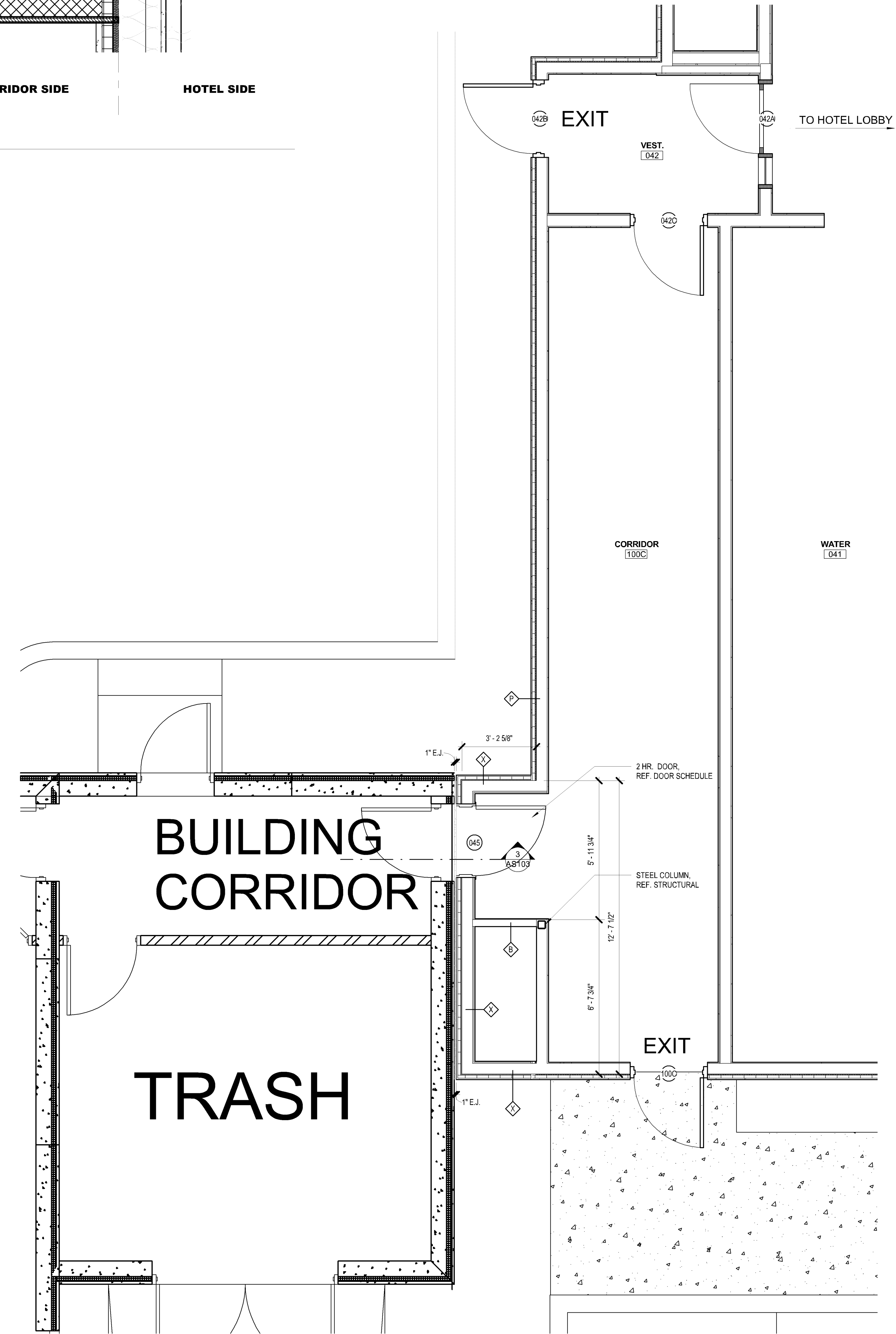
SCALE: 1 1/2" = 1'-0"

PL201800156
PL2018-156



4 FLASHING DETAIL

SCALE: 1 1/2" = 1'-0"



1 CORRIDOR -WHIRLY BALL CONNECTION - ENLARGED PLAN

SCALE: 3/8" = 1'-0"

2 CORRIDOR -WHIRLY BALL CONNECTION - ENLARGED RCP

SCALE: 3/8" = 1'-0"

3 CORRIDOR -WHIRLY BALL CONNECTION - WALL SECTION

SCALE: 1/2" = 1'-0"