

PROJECT

PROJECT ADDRESS:
8001 Bloomington Freeway
Bloomington, Minnesota 55420

GN Resound

PROJECT TEAM

TENANT:	MANAGEMENT:	PROJECT ARCHITECT / DESIGNER:	GENERAL CONTRACTOR:
GN Resound 8001 BLOOMINGTON FREEWAY BLOOMINGTON, MINNESOTA 55420	WJR, INC. 8175-B LEWIS ROAD GOLDEN VALLEY, MN 55421	DELLY CONSTRUCTION, INC. 9093 LYNDALE AVENUE SOUTH BLOOMINGTON, MN 55420	
CONTACT: BRUCE KNUTSON PHONE: 952-763-8141 CELL: 612-308-4609	CONTACT: REED ROBINSON PHONE: 763-398-0454 FAX: 763-398-0455	CONTACT: ANDY DELLY PHONE: 612-751-1489	
E-MAIL: BKNUTSON@GNRESOUND.COM	E-MAIL: RROBINSON@WJRCOM	E-MAIL: AJDELLY@DELLYCONSTRUCTION.COM	

GENERAL NOTES

THIS SHEET IS PART OF AN ENTIRE SET OF CONSTRUCTION DOCUMENTS. (SEE SCHEDULE OF DRAWINGS). THE GENERAL CONTRACTOR IS RESPONSIBLE FOR ALL COORDINATION BETWEEN SUBCONTRACTORS BASED ON THE ENTIRE SET OF DOCUMENTS. THE INTENT OF THESE DRAWINGS IS AS A DESIGN/BUILD SET AND THE SPECIFIC SUBCONTRACTORS SHALL ATTACH THEIR DESIGN DRAWINGS TO THIS SET FOR APPROVAL. IN CASE OF INCONSISTENCIES OR DISCREPANCIES BETWEEN DRAWINGS THE MOST STRINGENT NOTE OR CONDITION SHALL APPLY AND THE CONTRACTOR SHALL NOTIFY THE ARCHITECT IMMEDIATELY OF SUCH DISCREPANCIES.

IT IS THE RESPONSIBILITY OF THE GENERAL CONTRACTOR TO FIELD VERIFY EXISTING SITE CONDITIONS AND DIMENSIONS PRIOR TO STARTING CONSTRUCTION. CONDITIONS SHOWN ON THESE DOCUMENTS ARE BASED ON THE BEST AVAILABLE INFORMATION AND DOES NOT INCLUDE ANY HIDDEN OR UNFORESEEN CONDITIONS.

GENERAL CONTRACTOR SHALL KEEP ALL HANDBOOKS, PAPERWORK AND KEYS IN A MARKED ENVELOPE! THIS ENVELOPE SHALL BE TURNED OVER TO THE OWNER WITH THE CERTIFICATE OF OCCUPANCY (IF REQUIRED), LIEN WAIVERS, WARRANTIES, GUARANTEES AND EQUIPMENT OPERATION MANUALS.

GENERAL CONTRACTOR IS RESPONSIBLE FOR MAINTAINING A CURRENT SET OF CONSTRUCTION DOCUMENTS ON SITE DURING CONSTRUCTION. THE GENERAL CONTRACTOR SHALL INDICATE ON THESE PLANS ALL APPROVED CHANGES TO THE WORK DESCRIBED ON THESE DRAWINGS. THIS SHALL BE TURNED OVER TO THE OWNER WHEN PROJECT IS COMPLETED.

IF ANY ERRORS, DISCREPANCIES OR OMISSIONS APPEAR ON THESE DRAWINGS, SPECIFICATIONS OR OTHER CONTRACT DOCUMENTS THE TENANT'S CONTRACTOR SHALL NOTIFY THE TENANT'S PROJECT ARCHITECT IMMEDIATELY. FAILURE TO GIVE NOTICE WILL CAUSE THE TENANT'S CONTRACTOR TO BE HELD RESPONSIBLE FOR THE RESULTS OF SUCH ERRORS, DISCREPANCIES OR OMISSIONS AND THE COST OF RECTIFYING THE SAME.

NO MATERIAL SUBSTITUTIONS WILL BE ALLOWED UNLESS SUBMITTED IN WRITING TO THE ARCHITECT AND BUILDING OWNERS OR PROJECT MANAGER'S DESIGNATED REPRESENTATIVE FOR PRIOR APPROVAL.

NOTIFICATION OF INTENT TO MAKE SUBSTITUTIONS MUST BE SUBMITTED WITHIN 5 WORKING DAYS OF CONTRACT AWARD.

ALL MATERIALS AND PRODUCTS USED SHALL MATCH BUILDING STANDARDS (OR BEST PRACTICE) AS REQUIRED BY BUILDING MANAGEMENT.

REFER TO CONTRACTOR/LANDLORD RESPONSIBILITY SCHEDULE FOR WORK RESPONSIBILITIES. SCHEDULE HAS PRECEDENCE OVER DRAWINGS AND SPECIFICATIONS.

GENERAL CONTRACTOR TO CHECK IN AND VERIFY ALL SHIPMENTS OF OWNER FURNISHED MATERIALS. THIS INCLUDES VERIFYING PURCHASE ORDERS AGAINST PACKING LISTS AND THEN NOTIFYING TENANT OF ALL BACK ORDERS OR SHORTAGES. IF THIS IS NOT DONE THE GENERAL CONTRACTOR WILL BEAR ALL COSTS OF ANY EXPEDITED FREIGHT CHARGES TO MEET THE CONSTRUCTION SCHEDULE.

GENERAL CONTRACTOR AND SUBCONTRACTORS WILL BE FULLY RESPONSIBLE FOR ANY WORK DONE AT THE REQUEST OF THE THIRD PARTIES OUTSIDE OF THE PREMISES WITHOUT WRITTEN APPROVAL BY THE TENANT OR ARCHITECT.

ALL MODIFICATIONS TO EXISTING STRUCTURAL COMPONENTS SHALL INCLUDE RE-FIREPROOFING OF PRIMARY STRUCTURAL MEMBERS TO FIRE RESISTANCE OF THREE HOURS, AND SECONDARY MEMBERS WHICH DO NOT FRAME INTO COLUMNS TO FIRE RESISTANCE OF TWO HOURS.

WORK WHICH CREATES EXCESSIVE NOISE OR DISRUPTION TO TENANTS SHALL BE PERFORMED DURING NON-BUSINESS HOURS ONLY. CONTRACTOR TO COORDINATE WITH BUILDING MANAGEMENT.

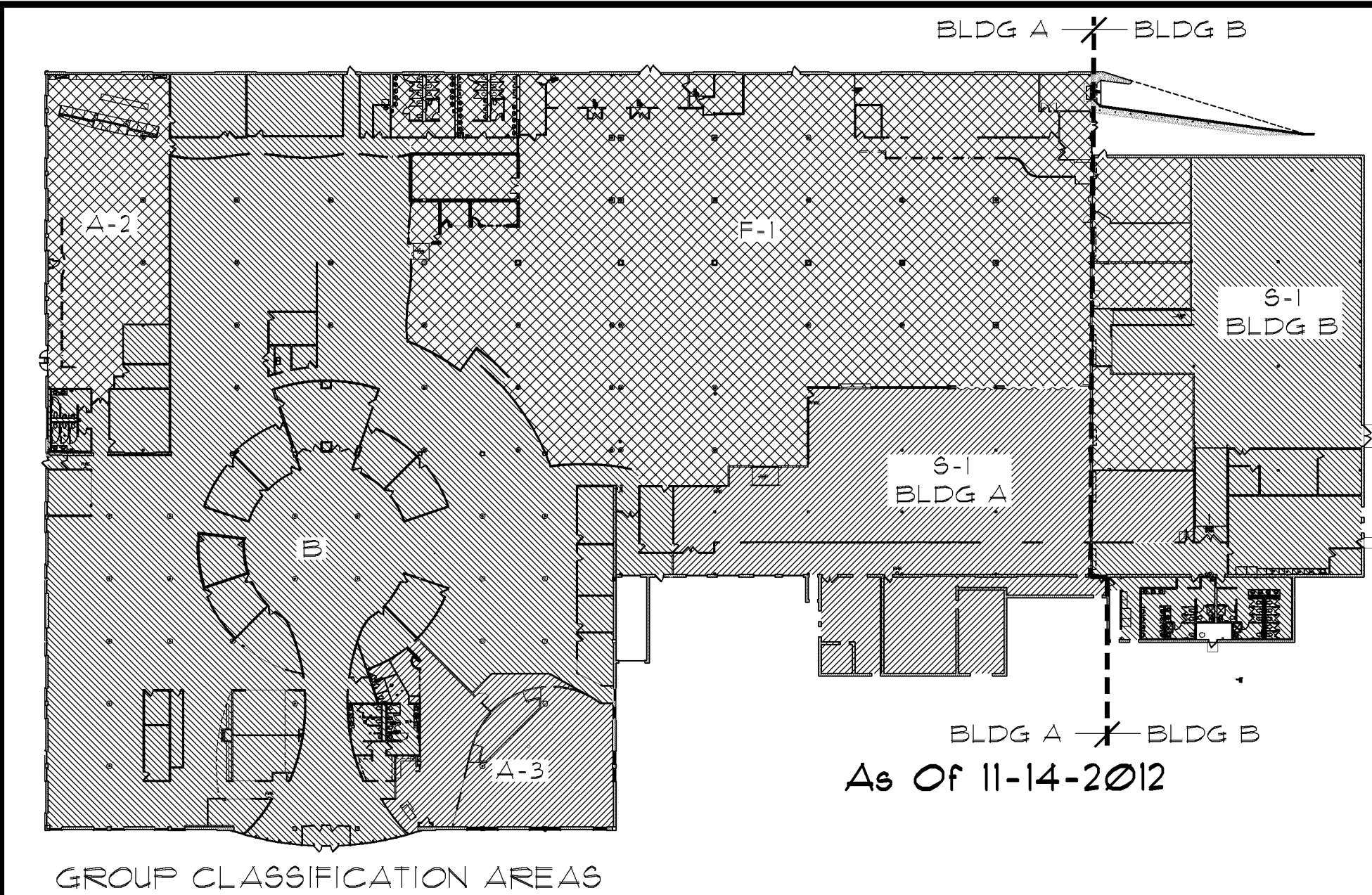
HVAC SHALL BE DESIGN BUILD UNDER SEPARATE CONTRACT.

GENERAL CONTRACTOR SHALL HAVE COMPLETE MECHANICAL AND ELECTRICAL DRAWINGS COMPLETED AND SUBMITTED TO LOCAL AUTHORITIES FOR REQUIRED REVIEWS, APPROVALS AND PERMITS (AS REQUIRED BY THE GOVERNING JURISDICTION).

SIGNAGE; INTERIOR AND EXTERIOR SIGNAGE SHALL BE FURNISHED AND INSTALLED BY TENANT.

SHEET INDEX

T01 TITLE SHEET/CODE REVIEW
A1 DEMOLITION PLAN/CONSTRUCTION PLAN
A2 REFLECTED CLG PLAN/ELECTRICAL PLAN



CODE REVIEW

SOURCES:

INTERNATIONAL BUILDING CODE 2012 EDITION
MINNESOTA STATE BUILDING CODE 2015 EDITION
ICC/ANSI STANDARDS A117.1-2003 EDITION
MINNESOTA STATE FIRE CODE 2015 EDITION

OCCUPANCY CLASSIFICATION:

GROUP A-2 - ASSEMBLY (BREAK ROOM)
GROUP A-3 - ASSEMBLY (TRAINING ROOM AND LOUNGE)
GROUP B - BUSINESS (GENERAL OFFICE AREA)
GROUP F-1 - FACTORY (GENERAL PRODUCTION AREA)
GROUP S-1 - STORAGE (WAREHOUSE AND PARTS)

HEIGHTS AND AREAS:

BUILDING HAS BEEN SPLIT INTO TWO AREAS. THE FIRST, BUILDING A, IS THE MAIN BODY OF THE BUILDING AND THE SECOND, BUILDING B, IS THE TWO STORY PORTION OF THE BUILDING. THE TWO PARTS ARE SPLIT WITH A TWO HOUR SEPARATION.

BUILDING A: TYPE IIB CONSTRUCTION - B OCCUPANCY

ALLOWABLE SQUARE FOOTAGE FROM TABLE 503 IS 23,000 SF.
USING ALLOWABLE AREA INCREASES FOR SEPARATION THREE SIDES (17x62) (14,293 SF) AND AREA INCREASE FOR SPRINKLER AT 300% (63,000 SF) WOULD CREATE AN ALLOWABLE SQUARE FOOTAGE OF 106,293 SF.
BUILDING A = 102,124 SF.

BUILDING B: TYPE IIB CONSTRUCTION - S-1 OCCUPANCY

ALLOWABLE SQUARE FOOTAGE FROM TABLE 503 IS 17,500 SF.
USING ALLOWABLE AREA INCREASES FOR SEPARATION THREE SIDES (17x63) (11,025 SF) AND AREA INCREASE FOR SPRINKLER AT 200% (35,000 SF) WOULD CREATE AN ALLOWABLE SQUARE FOOTAGE OF 63,525 SF.
BUILDING B = 18,104 SF.

REQUIRED SEPARATION OF OCCUPANCIES: TABLE 508.4

GROUP A-2 IS REQUIRED TO BE SEPARATED BY 1 HOUR IN A SPRINKLED BUILDING FROM THE ADJACENT GROUP B. THIS SEPARATION EXISTS PRIOR TO THE REMODELING AND WILL NOT BE CHANGED IN THE REMODELING.
GROUP A-3 IS SEPARATED BY 1 HOUR FIRE BARRIER IN A SPRINKLED BUILDING FROM THE ADJACENT GROUP B.

OCCUPANT LOAD CALCULATION: (TABLE 1004.1.2)

GROUP A-2 - ASSEMBLY - 15 SF / OCC. 5030 SF DIVIDED BY 15 = 335 OCCUPANTS
GROUP A-3 - ASSEMBLY - 15 SF / OCC. 4351 SF DIVIDED BY 15 = 290 OCCUPANTS
GROUP B - BUSINESS - 100 SF/OCC. 44530 SF DIVIDED BY 100 = 445 OCCUPANTS
GROUP F-1 - FACTORY - 100 SF/OCC. 38,014 SF DIVIDED BY 100 = 381 OCCUPANTS
GROUP S-1 - STORAGE - 500 SF/OCC. 1758 SF DIVIDED BY 500 = 16 OCCUPANTS - BUILDING A
GROUP S-1 - STORAGE - 500 SF/OCC. 14,920 SF DIVIDED BY 500 = 30 OCCUPANTS - BUILDING B

EGRESS WIDTH: (SECTION 1005.5)

WITH SPRINKLED BUILDING FACTOR IS 0.15" / OCC.
TOTAL OCCUPANT LOAD IS 1491 OCC. X 0.15" = 224.55"
PROVIDED 336" OF EGRESS

COMMON PATH OF TRAVEL: (TABLE 1014.3)

COMMON PATH OF TRAVEL IS 120 FT WITH EXCEPTION 1 IN PARAGRAPH 1014.3. THERE IS NO PORTION OF BUILDING WHERE COMMON PATH OF TRAVEL IS GREATER THAN 120 FT.

EXIT AND EXIT ACCESS DOORWAYS: (TABLE 1015.1)

GROUP A-2 - ASSEMBLY - 335 OCCUPANTS - OVER 49 OCCUPANTS REQUIRES 2 EXITS - 2 EXITS PROVIDED
GROUP A-3 - ASSEMBLY - 290 OCCUPANTS - OVER 49 OCCUPANTS REQUIRES 2 EXITS - 2 EXITS PROVIDED
GROUP B - BUSINESS - 445 OCCUPANTS - OVER 49 OCCUPANTS REQUIRES 2 EXITS - 4 EXITS PROVIDED
GROUP F-1 - FACTORY - 386 OCCUPANTS - OVER 49 OCCUPANTS REQUIRES 2 EXITS - 4 EXITS PROVIDED
GROUP S-1 - STORAGE - 16 OCCUPANTS - OVER 29 OCCUPANTS REQUIRES 2 EXITS - 2 EXITS PROVIDED - BUILDING A
GROUP S-1 - STORAGE - 33 OCCUPANTS - OVER 29 OCCUPANTS REQUIRES 2 EXITS - 2 EXITS PROVIDED - BUILDING B

EXIT ACCESS TRAVEL DISTANCE: (TABLE 1016.2)

GROUP B - TRAVEL DISTANCE IS 300 FT.
GROUPS A, F AND S - TRAVEL DISTANCE IS 250 FT.
THERE IS NO AREA WITHIN THE GROUPS ABOVE THAT HAVE A TRAVEL DISTANCE LONGER THAN ALLOWED UNDER THE CODE. THIS IS BECAUSE THE PLACEMENT OF EXIT DOORS IS SUCH THAT THE DISTANCE TO THE EXIT IS LESS THAN ALLOWED.

TOILET FIXTURE REQUIREMENT

PLUMBING FIXTURES:	GOVERNING CODE:
PROVIDED BY ACCORDING TO TABLE 2902.1	2015 MN STATE BLDG CODE CHAPTER 29 - Plumbing Systems

GROUP WATER CLOSET LAVATORIES FOUNTAINS SERVICE SINK

GROUP	MEN	WOMEN			
GROUP A-2	1/15	1/15	1/200	1/500	1
GROUP A-3	1/125	1/65	1/200	1/500	1
GROUP B	1/25 TO 50	1/50	1/40 TO 80	1/100	1
GROUP F-1	1/100	1/100	1/100	1/400	1
GROUP S-1	1/100	1/100	1/100	1/1000	1

GROUP OCC WATER CLOSET LAVATORIES FOUNTAINS SERVICE SINK

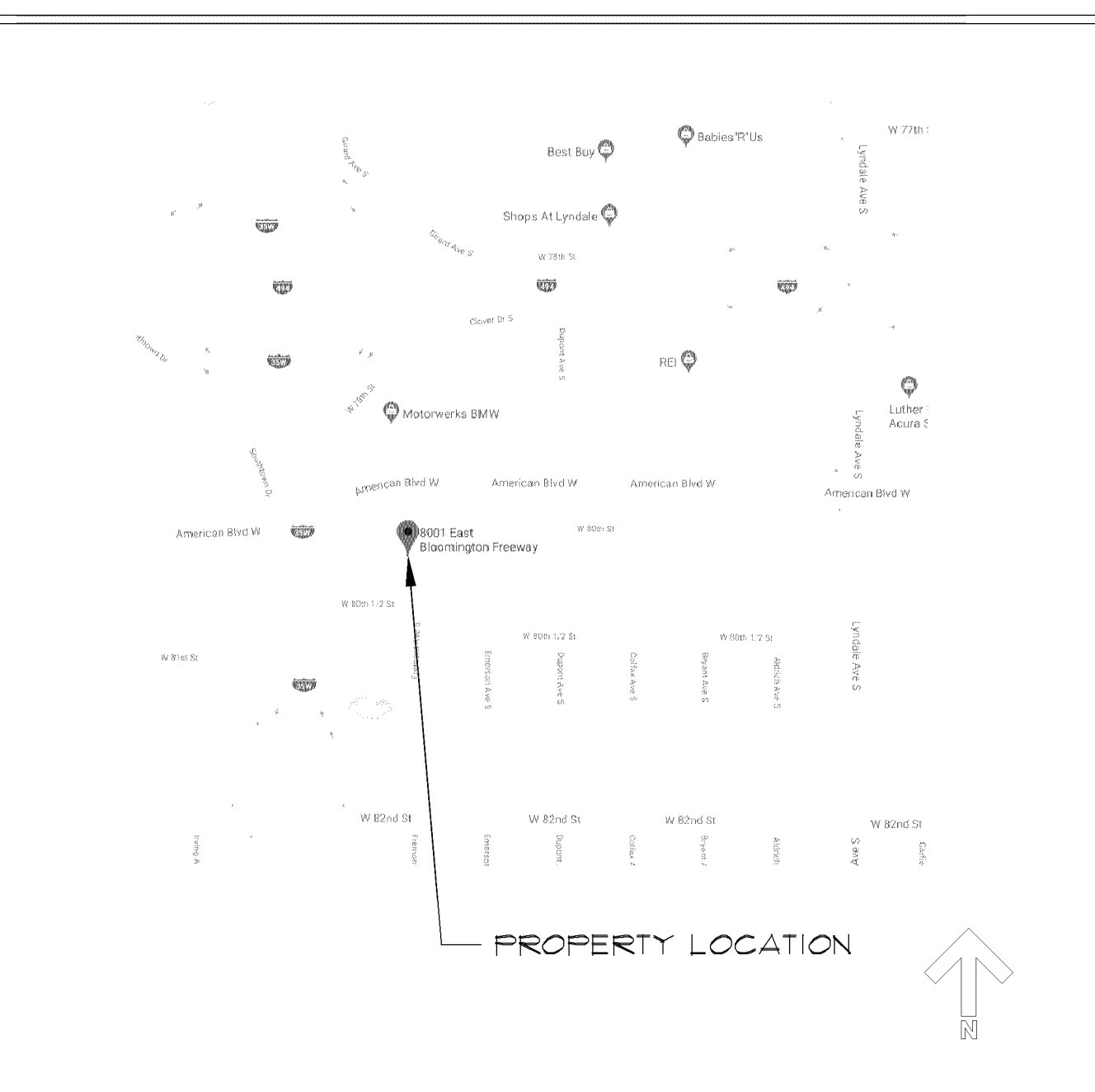
GROUP	OCC	MEN	WOMEN			
GROUP A-2	335	4.41	4.41	1.68	0.67	1
GROUP A-3	290	1.16	2.23	1.45	1.45	1
GROUP B	445	5.46	5.46	6.56	4.45	1
GROUP F-1	381	1.91	1.91	3.81	0.95	1
GROUP S-1	46	0.23	0.23	0.46	0.23	1
TOTAL REQ'D	1323	14.30	13.96	15.4		
TOTAL PROVIDED	34	26	44	6	3	

ENERGY CODE

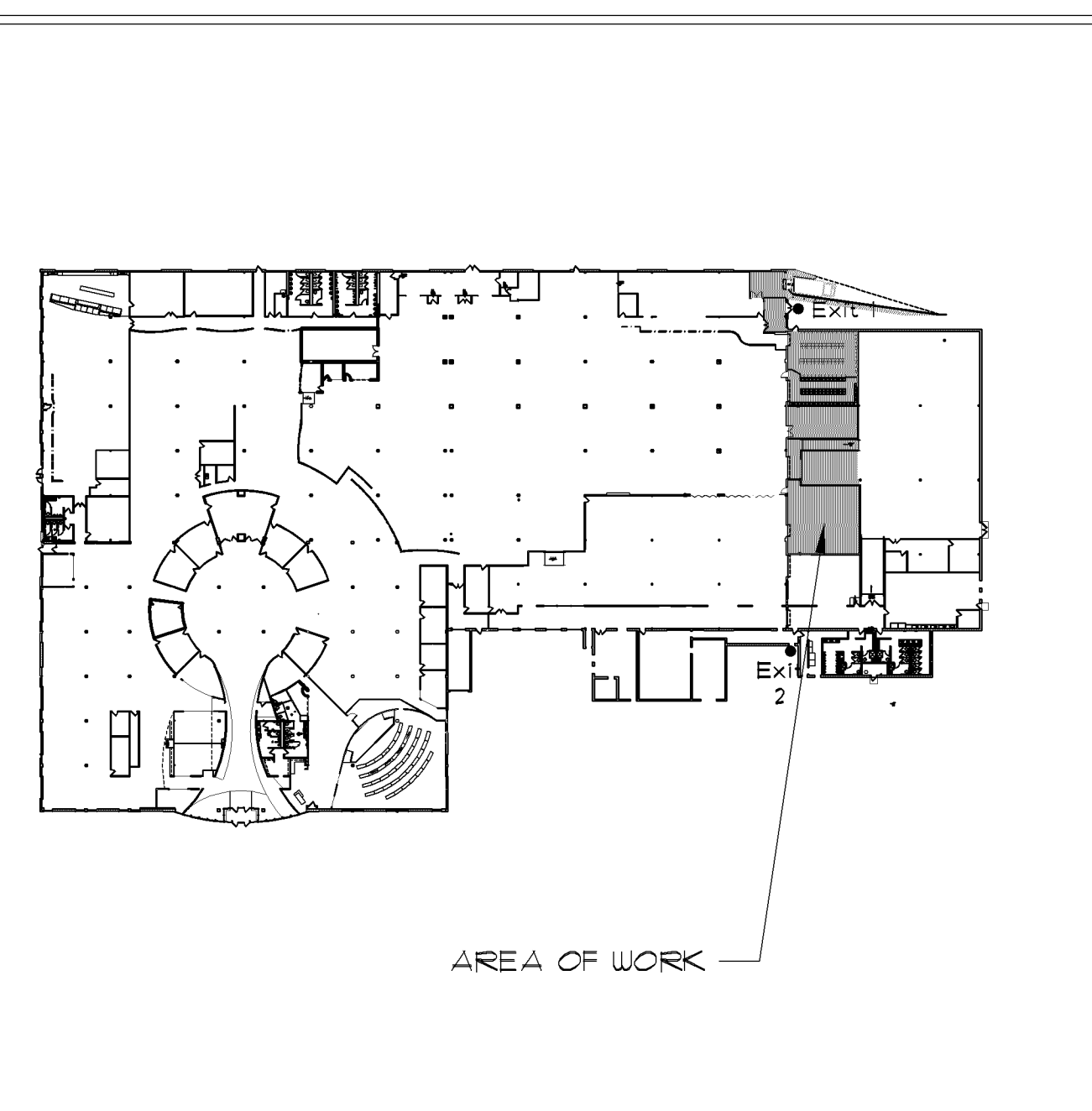
2015 MINNESOTA COMMERCIAL ENERGY CODE

PARAGRAPH 1323.0100 - ADMINISTRATION FOR COMMERCIAL ENERGY CODE - SUBPARAGRAPH 3 - ADDITIONS, ALTERATIONS, RENOVATIONS, OR REPAIRS - EXCEPTIONS: THE FOLLOWING CONDITIONS ARE NOT REQUIRED TO COMPLY WITH THIS CODE IF THE ENERGY USE OF THE BUILDING IS NOT INCREASED.
EXCEPTION #1 - ALTERATIONS THAT REPLACE LESS THAN 50% OF THE LUMINAIRES IN A SPACE, PROVIDED THAT SUCH ALTERATIONS DO NOT INCREASE THE INSTALLED INTERIOR LIGHTING POWER. SEE SHEET A2 FOR CALCULATIONS.

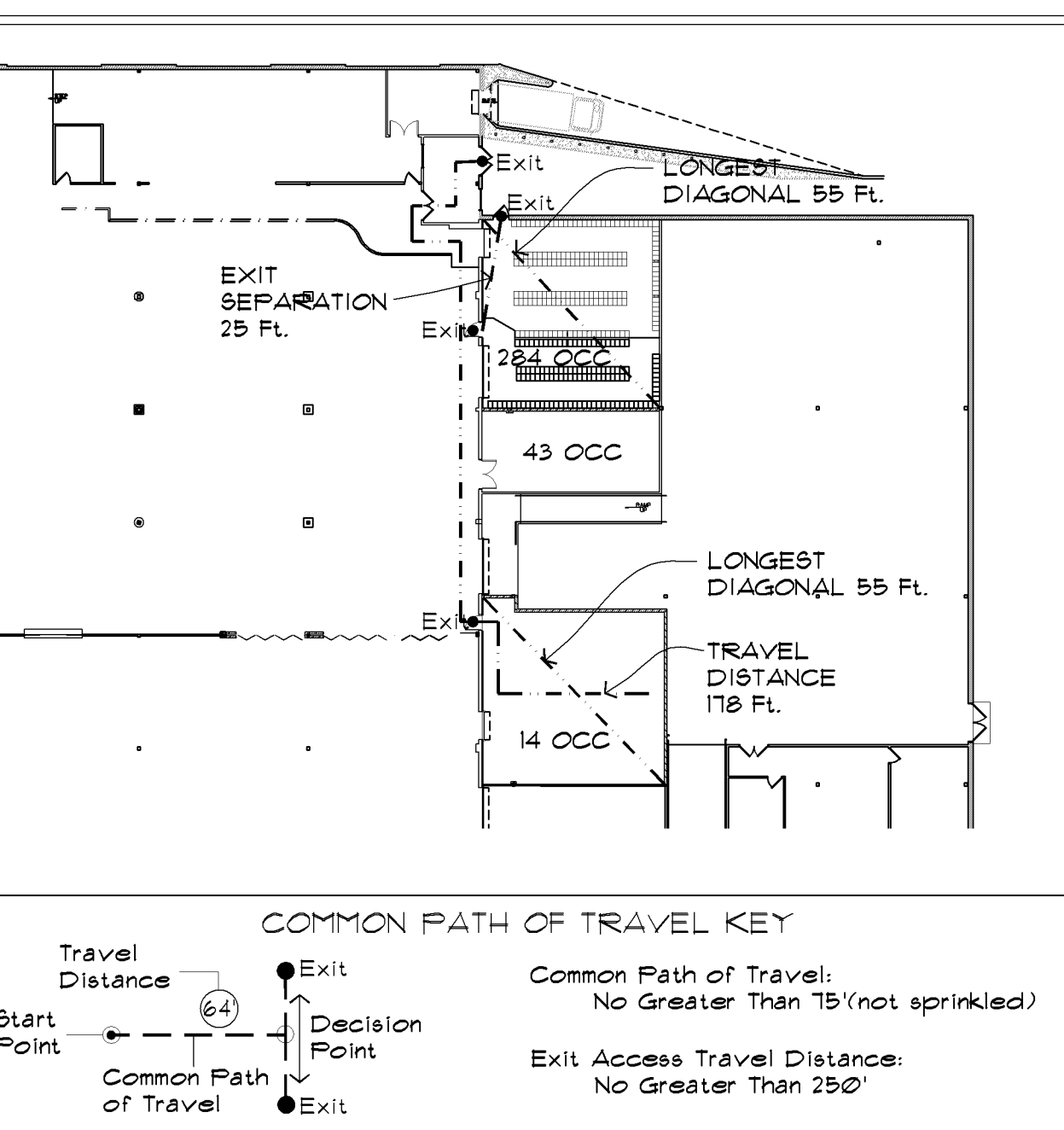
LOCATION MAP



LOCATION PLAN



EXIT PLAN



Winther-Johnson-Robinson
Architects+Designers

8175-B Lewis Road
Golden Valley, Minnesota 55427
Phone: 763-398-0452
Fax: 763-398-0455

I hereby certify that this plan, specification or report was prepared by me or under my direct supervision and that I am a duly registered architect under the Laws of the State of Minnesota.

Reed Robinson
Date: 04.10.18 Reg. No.: 19466

GN RESOUND - LOCKER TRAINING SALVAGE
8001 Bloomington Freeway
Bloomington, MN 55420

Issues & Revisions:
Origination Date: 04-10-18

Sheet Title:
TITLE SHEET
CODE REVIEW

Location:
8001 Bloomington Freeway
Bloomington, MN 55420

Project No.: 17-179.01B
Scale: As Noted
Drawn By: RWJ, KNL
Approved: RFR

T1

OF 3

© COPYRIGHT DRAWING & DESIGN 2018, WJR, INC.



Winther-Johnson-Robinson
Architects-Designers

8175-B Lewis Road
Golden Valley, Minnesota 55427
Phone: 763-398-0452
Fax: 763-398-0455

I hereby certify that this plan, specification or report was prepared by me or under my direct supervision and that I am a duly registered architect under the laws of the State of Minnesota.

REED F. ROBINSON
Date: 04.10.18 Reg. No.: 19466

GN RESOUND - LOCKER TRAINING SALVAGE
8001 Bloomington Freeway
Bloomington, MN 55420

Issues & Revisions:
Origination Date: 04-10-18

Sheet Title:
REFLECTED CEILING &
ELECTRICAL PLANS

Location:
8001 Bloomington Freeway
Bloomington, MN 55420

Project No.: 17-179.01B
Scale: As Noted
Drawn By: RWC, RNL
Approved: RFR

A2

OF 3

© COPYRIGHT DRAWING & DESIGN 2018, WJR, INC.

MECHANICAL GENERAL NOTES:

- ALL MECHANICAL ENGINEERING SHALL BE PERFORMED BY MECHANICAL CONTRACTOR UNDER CONTRACT TO GENERAL CONTRACTOR.
- G.C. SHALL COORDINATE ALL OTHER WORK WITH HVAC WORK AS REQUIRED.
- PROVIDE/LOCATE/RELOCATE THERMOSTATS, FIRE ALARMS, STROBES, FIRE EXTINGUISHERS, ETC. AS REQUIRED BY LOCATION OF NEW PARTITIONS, CASEWORK AND TENANT'S FURNITURE.
- COORDINATE WITH ARCHITECT TO DETERMINE LOCATION OF DEVICES AND CONTROLS.
- ENGINEERING DRAWINGS SHALL DETERMINE ELECTRICAL/MECHANICAL SYSTEMS DESIGN. PROVIDE BAFFLED DAMPER OR TRANSFER PANELS AT ACOUSTIC PARTITIONS.

ELECTRICAL GENERAL NOTES:

- ELECTRICAL SHALL BE AS SHOWN ON DRAWINGS. ELECTRICAL CONTRACTOR SHALL CIRCUIT RECEPTACLES AS NECESSARY TO MEET CODE AS WELL AS TO LIMIT RECEPTACLES ON CIRCUIT TO 6.

ELECTRICAL KEY NOTES:

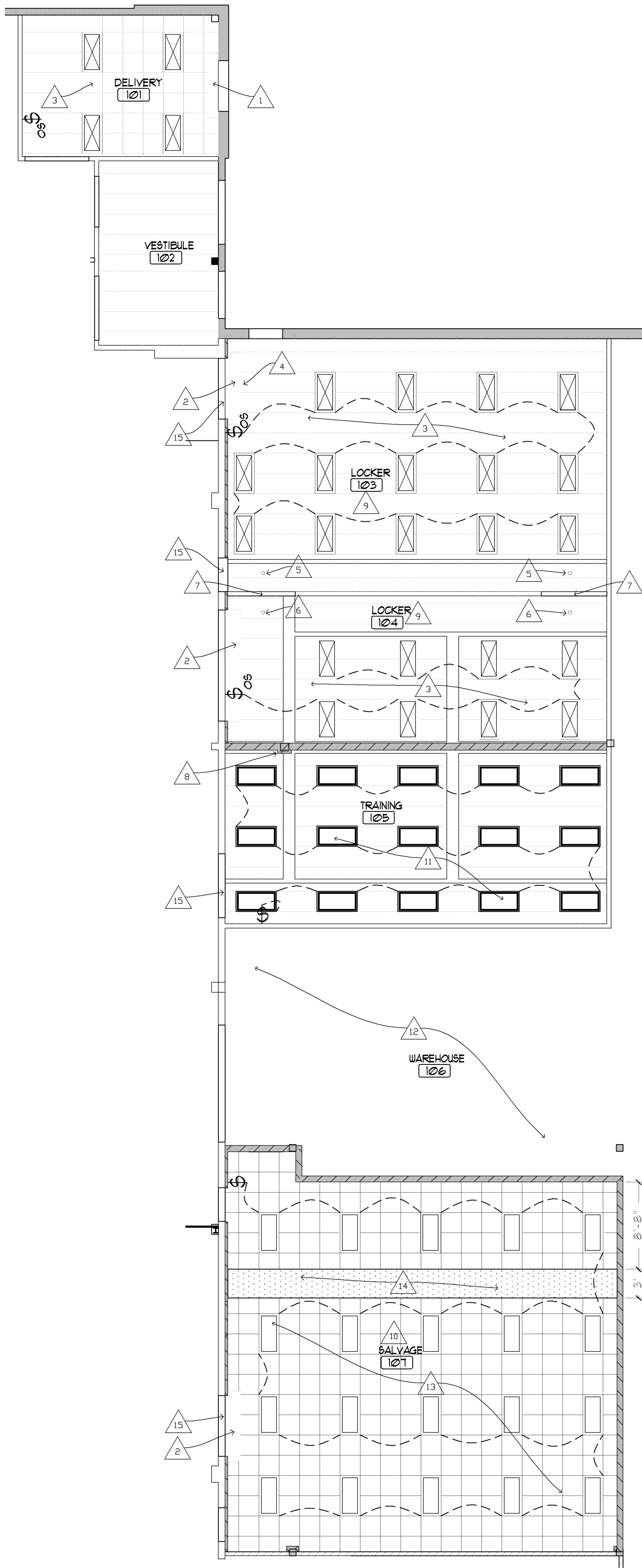
- COORDINATE FLOOR BOXES WITH OWNER.
- PROVIDE 6 JUNCTION BOXES BELOW FLOOR WITH A 20 AMP CIRCUIT PER J-BOX. SPACE AT THIRD POINTS ALONG SHORT AXIS OF ROOM AND AT QUARTER POINTS ALONG LONG AXIS OF ROOM.
- PROVIDE 9 JUNCTION BOXES BELOW FLOOR WITH A 20 AMP CIRCUIT PER J-BOX. SPACE AT QUARTER POINTS ALONG SHORT AXIS OF ROOM AND AT QUARTER POINTS ALONG LONG AXIS OF ROOM.
- PROVIDE POWER AS NECESSARY FOR JACK SHAFT OPENER.
- PROVIDE POWER AS NECESSARY FOR ROLLING SHUTTER. CONNECT TO FIRE ALARM SYSTEM.

REFLECTED CEILING SYMBOLS LEGEND

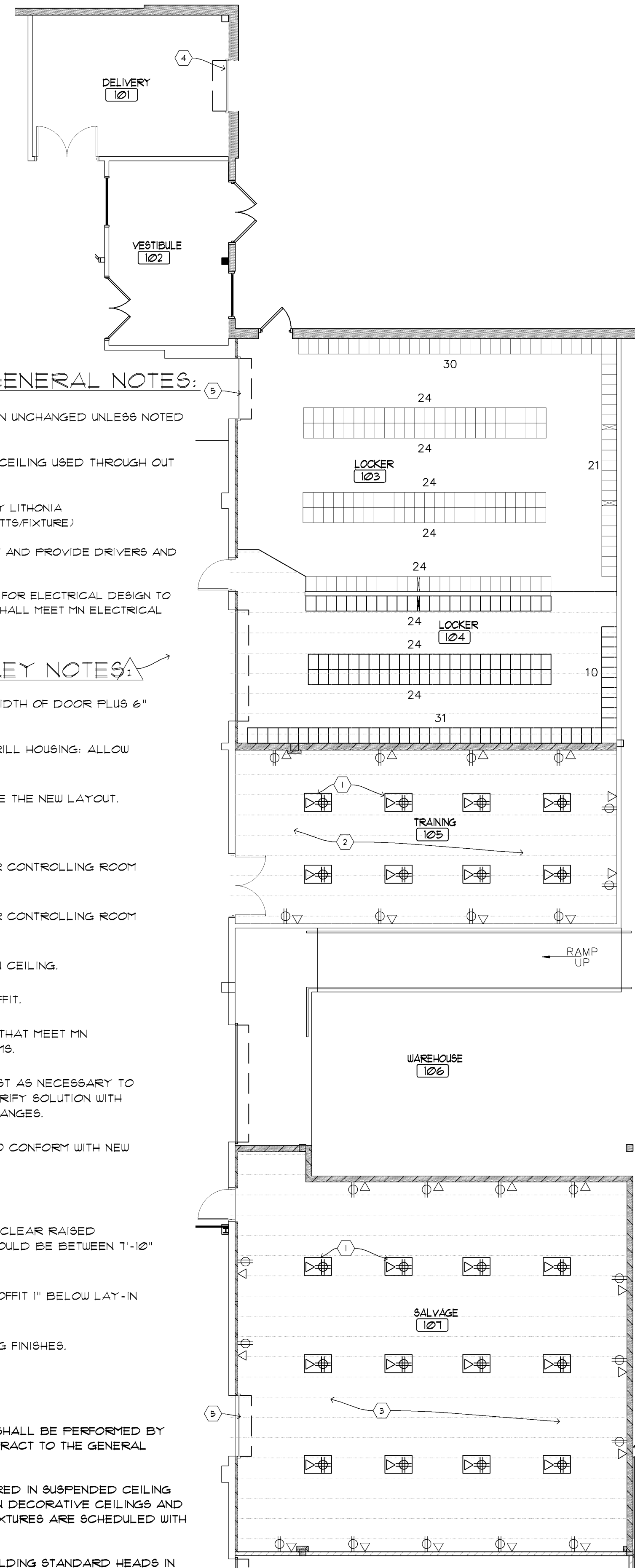
LAY-IN FIXTURES	RECESSED FIXTURES	SYMBOL INDICATORS
2' X 2' 2' X 4'	RECESSED DOWNLIGHT	FIXTURE TYPE INDICATOR
Existing LOCATION	RECESSED WALL WASH / ADJUSTABLE	SWITCH INDICATOR
New LOCATION	GENERAL SYMBOLS	SWITCH
New FIXTURE	KEYED NOTE	FIXTURE CONTROLLED BY SWITCH
CEILING SYSTEMS	ROOM NUMBER	DIMMER SWITCH
SUSPENDED CEILING SYSTEMS:	EXHAUST FAN	NIGHT LIGHT
GENERAL AREA (UNO) Match Existing	CEILING SPEAKER	EXISTING TO REMAIN
GYPSUM BOARD CEILING/SOFFITS	EXIT SIGN	OCCUPANCY SENSOR
	EXIT SIGN WITH EMERGENCY LIGHTS	VACANCY SENSOR
	EMERGENCY LIGHTS	3 WAY SWITCH
	OCCUPANCY SENSOR - CEILING	4 WAY SWITCH
	VACANCY SENSOR - CEILING	FLOOR BOX
	SPRINKLER	

MN ENERGY CODE INTERIOR LIGHTING COMPLIANCE CALCULATIONS:

EXISTING FIXTURE SCHEDULE						
NUMBER	FIXTURE TYPE	LAMP TYPE	CALCULATION	QUANTITY	WATTS USED	MANUFACTURER / CATALOG NO.
1	2' X 4' FLUORESCENT	2 T8 LAMPS 32 WTS/LAMP	32 X 2 = 64 WTS / FIX	44	64 WTS X 44 FIX = 2,816 WATTS	
2	-	-	-	-	-	
3	-	-	-	-	-	
4	-	-	-	-	TOTAL WATTS = 2,816 WATTS	
EXISTING INTERIOR LIGHTING POWER TOTAL 2,560 WATTS / 3,609 S.F. = 0.71 WATTS PER S.F.						
PROPOSED FIXTURE SCHEDULE						
NUMBER	FIXTURE TYPE	LAMP TYPE	CALCULATION	QUANTITY	WATTS USED	MANUFACTURER / CATALOG NO.
1	2' X 4' DIRECT/INDIRECT CONVERTED TO LED	LED 18 WTS/LAMP	18 X 2 = 36 WTS / FIX	26	36 WTS X 26 FIX = 936 WATTS	
2	2' X 4' DIRECT/INDIRECT CONVERTED TO LED	LED 18 WTS / LAMP	18 X 2 = 36 WTS / FIX	15	36 WTS X 15 FIX = 540 WATTS	
3	2' X 4' DIRECT/INDIRECT LED	LED	38.34 WTS / FIX	20	38.34 WTS X 20 FIX = 766.8 WATTS	LITHONIA (38.34 WATTS PER FIXTURE) 2BLT4-46L-ADP-271-EZ1-LP835
4	-	-	-	-	TOTAL WATTS = 2,243 WATTS	
PROPOSED INTERIOR LIGHTING POWER TOTAL 2,243 WATTS / 3,609 S.F. = 0.62 WATTS PER S.F.						



1
A2 REFLECTED CEILING PLAN
SCALE: 1/8" = 1'-0"



2
A2 ELECTRICAL PLAN
SCALE: 1/8" = 1'-0"



REFLECTED CEILING GENERAL NOTES:

- EXISTING LAY-IN CEILING SHALL REMAIN UNCHANGED UNLESS NOTED OTHERWISE.
- NEW LAY-IN CEILING WILL MATCH 2"X2" CEILING USED THROUGH OUT PRODUCTION AREA.
- NEW LIGHTS TO BE LED 2X4 FIXTURES BY LITHONIA 2BLT4-46L-ADP-271-EZ1-LP835 (38.34 WATTS/FIXTURE)
- EXISTING 2X4 FIXTURES REMOVE BALLAST AND PROVIDE DRIVERS AND LED TUBES FOR LIGHT FIXTURES.
- ELECTRICAL CONTRACTOR RESPONSIBLE FOR ELECTRICAL DESIGN TO INCLUDE LIGHTING AND POWER. DESIGN SHALL MEET MN ELECTRICAL CODE AND MN ENERGY CODE.

REFLECTED CEILING KEY NOTES:

- CREATE OPENING IN CEILING OF 12" X WIDTH OF DOOR PLUS 6" EACH WAY.
- CREATE OPENING AROUND ROLLING GRILL HOUSING: ALLOW FOR ALL DOOR MECHANISMS.
- RE-POSITION LIGHTS TO ACCOMMODATE THE NEW LAYOUT.
- REMOVE FIXTURE
- CEILING MOUNTED OCCUPANCY SENSOR CONTROLLING ROOM 103 LIGHTS.
- CEILING MOUNTED OCCUPANCY SENSOR CONTROLLING ROOM 104 LIGHTS.
- SOFFIT TO BE 1" BELOW HIGHEST LAY-IN CEILING.
- ALIGN FACE OF WALL WITH FACE OF SOFFIT.
- PROVIDE EXHAUST AND AIR CHANGES THAT MEET MN MECHANICAL CODE FOR LOCKER ROOMS.
- PROVIDE AIR EXCHANGES AND EXHAUST AS NECESSARY TO CONTROL BODY ORDER THIS ROOM. VERIFY SOLUTION WITH OWNER PRIOR TO DESIGNING AIR EXCHANGES.
- ROTATE EXISTING LIGHTS THIS ROOM TO CONFORM WITH NEW LAYOUT. WIRE TO NEW SWITCH.
- NO WORK AT CEILING THIS AREA.
- SET CEILING AS HIGH AS POSSIBLE TO CLEAR RAISED SPRINKLER LINES AND STRUCTURE. SHOULD BE BETWEEN 7'-10" AND 8'-0" AFF.
- 3/8" GYP. BD. SOFFIT WITH BOTTOM OF SOFFIT 1" BELOW LAY-IN CEILING SYSTEM.
- FINISH HEADER TO MATCH SURROUNDING FINISHES.

FIRE PROTECTION

- ALL FIRE PROTECTION ENGINEERING SHALL BE PERFORMED BY LICENSED CONSULTANTS UNDER CONTRACT TO THE GENERAL CONTRACTOR.
- SPRINKLER HEADS SHALL BE CENTERED IN SUSPENDED CEILING TILE UNO. COORDINATE LOCATIONS IN DECORATIVE CEILINGS AND IN LOCATIONS WHERE DECORATIVE FIXTURES ARE SCHEDULED WITH ARCHITECT.
- SPRINKLER HEADS SHALL MATCH BUILDING STANDARD HEADS IN AREA OF CONSTRUCTION.
- FLUSH COVERED HEADS SHALL BE INSTALLED IN GYPSUM BOARD SOFFITS.

