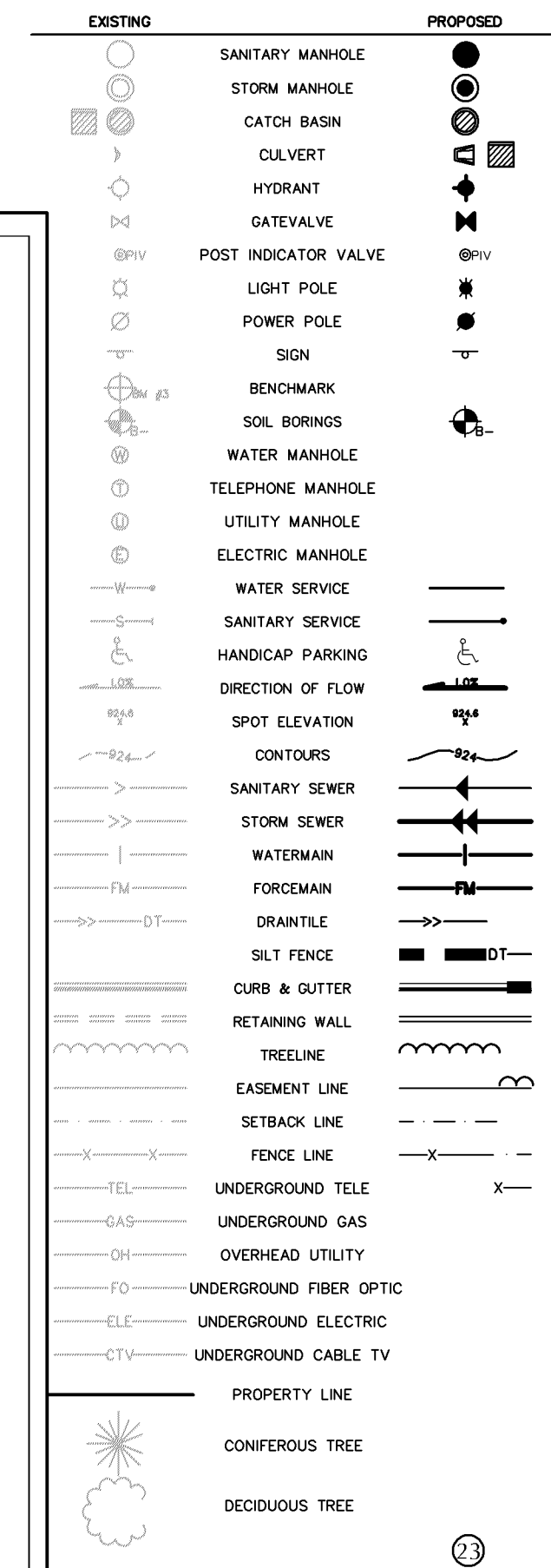


CIVIL LEGEND



Creekview
North Drive
Aisle

7101 West 78th Street
Minneapolis, MN 55439

Frauenschuh

7101 West 78th Street
Minneapolis, MN 55439

LOUCKS

PLANNING
CIVIL ENGINEERING
LAND SURVEYING
LANDSCAPE ARCHITECTURE
ENVIRONMENTAL

7200 Hemlock Lane, Suite 300
Maple Grove, MN 55369
763.424.5505
www.louckscinc.com

CADD QUALIFICATION

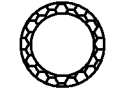
CADD files prepared by the Consultant for this project are prepared by the Consultant's professional services for use solely with respect to this project. These CADD files shall not be used on other projects, for additions to this project, or for completion of this project by others without written approval by the Consultant. With the Consultant's approval, others may be permitted to obtain copies of the CADD drawing files for information and reference only. All intentional or unintentional revisions, additions, or deletions to these CADD files shall be made at the full risk of that party making such revisions, additions or deletions and that party shall hold harmless and indemnify the Consultant from any & all responsibilities, claims, and liabilities.

SUBMITTAL/REVISIONS

**APPROVED
ZONING REVIEW ONLY
NMJ 11/21/2018**

ENGINEERING DIVISION
Approved by: Jen Desrude, PE
05/30/2018 00:47 AM

EROSION CONTROL LEGEND



INLET PROTECTION, SEE DETAIL C3-3,
OR USE SILT FENCE FOR FES

GRADING, DRAINAGE & EROSION CONTROL NOTES

- SPOT ELEVATIONS REPRESENT FINISHED SURFACE GRADES, GUTTER/FLOW LINE, FACE OF BUILDING, OR EDGE OF PAVEMENT UNLESS OTHERWISE NOTED.
- CATCH BASINS AND MANHOLES IN PAVED AREAS SHALL BE SUMPED 0.04 FEET. ALL CATCH BASINS IN GUTTERS SHALL BE SUMPED 0.16 FEET. RIM ELEVATIONS SHOWN ON PLANS DO NOT REFLECT SUMPED ELEVATIONS.
- ALL DISTURBED UNPAVED AREAS ARE TO RECEIVE MINIMUM OF 4 INCHES OF TOP SOIL AND SEED/MULCH OR SOD. THESE AREAS SHALL BE WATERED/MAINTAINED BY THE CONTRACTOR UNTIL VEGETATION IS ESTABLISHED.
- FOR SITE RETAINING WALLS "TW" EQUALS SURFACE GRADE AT TOP OF WALL (NOT TOP OF WALL), "GW" EQUALS SURFACE GRADE AT WALL GRADE TRANSITION, AND "BW" EQUALS SURFACE GRADE AT BOTTOM FACE OF WALL (NOT BOTTOM OF BURIED WALL COURSES).
- STREETS MUST BE CLEANED AND SWEEPED WHENEVER TRACKING OF SEDIMENTS OCCURS AND BEFORE SITES ARE LEFT IDLE FOR WEEKENDS AND HOLIDAYS. A REGULAR SWEEPING SCHEDULE MUST BE ESTABLISHED.
- DUST MUST BE ADEQUATELY CONTROLLED.

SITE NOTES

- BACKGROUND INFORMATION IS BASED ON A FIELD SURVEY BY H.S. JOHNSON ON 3.23.2018 AND RECORD UTILITY DRAWINGS FROM THE CITY. LOUCKS DOES NOT GUARANTEE THE ACCURACY OF INFORMATION PROVIDED BY OTHERS.
- ALL PAVING, CONCRETE CURB, GUTTER AND SIDEWALK SHALL BE FURNISHED AND INSTALLED IN ACCORDANCE WITH THE DETAILS SHOWN PER THE DETAIL SHEET(S) AND STATE/LOCAL JURISDICTION REQUIREMENTS.
- ACCESSIBLE PARKING AND ACCESSIBLE ROUTES SHALL BE PROVIDED PER CURRENT ADA STANDARDS AND LOCAL/STATE REQUIREMENTS.
- ALL CURB DIMENSIONS SHOWN ARE TO THE FACE OF CURB UNLESS OTHERWISE NOTED.
- ALL BUILDING DIMENSIONS ARE TO THE OUTSIDE FACE OF WALL UNLESS OTHERWISE NOTED.
- TYPICAL FULL SIZED PARKING STALL IS 9' X 18' UNLESS OTHERWISE NOTED.
- ALL CURB RADII SHALL BE 5.0' UNLESS OTHERWISE NOTED.
- BITUMINOUS IMPREGNATED FIBER BOARD TO BE PLACED AT FULL DEPTH OF CONCRETE ADJACENT TO EXISTING STRUCTURES AND BEHIND CURB ADJACENT TO DRIVEWAYS AND SIDEWALKS.
- SEE SITE ELECTRICAL PLAN FOR SITE LIGHTING.
- ALL PARKING LOT PAVEMENT MARKINGS SHALL BE 4" WIDE WHITE PAINTED STRIPING.

PROFESSIONAL SIGNATURE

I hereby certify that this plan, specification or report was prepared by me or under my direct supervision and that I am a duly Licensed Professional Engineer under the laws of the State of Minnesota.

Jen Desrude
Vicki J. Desrude, PE

License No. 41352
Date 05.2.2018

QUALITY CONTROL

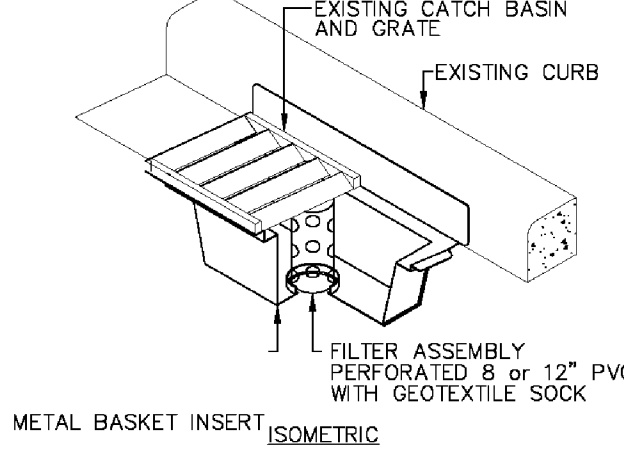
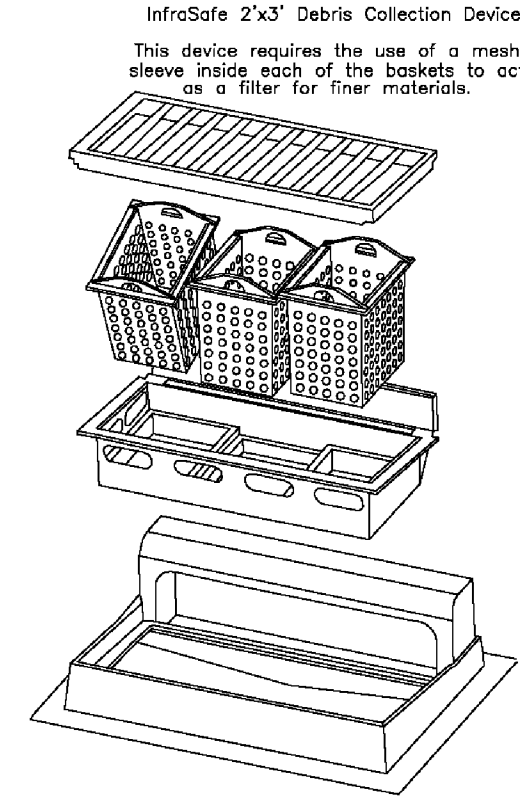
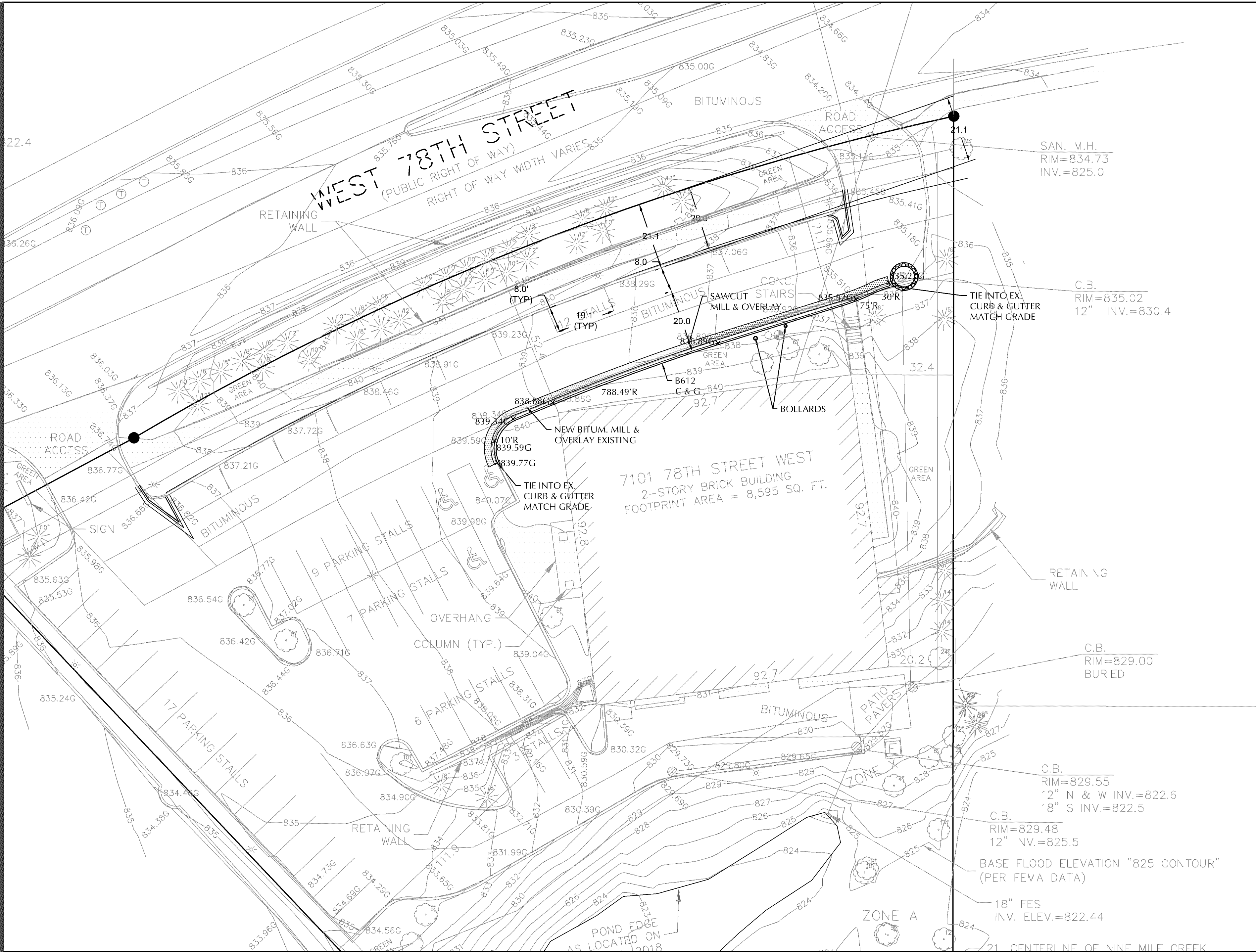
Loucks Project No. 14004
Project Lead VJV
Drawn By BMM
Checked By
Review Date

SHEET INDEX

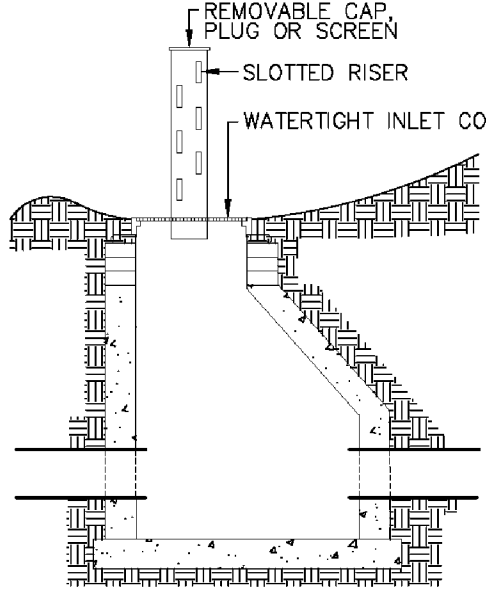
SHEET C3-1 SITE AND GRADING PLAN

**SITE AND
GRADING
PLAN**

C3-1



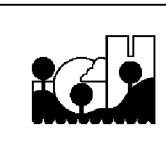
METAL BASKET TYPE



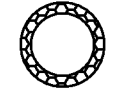
SLOTING RISER INLET FILTER

NOTES:

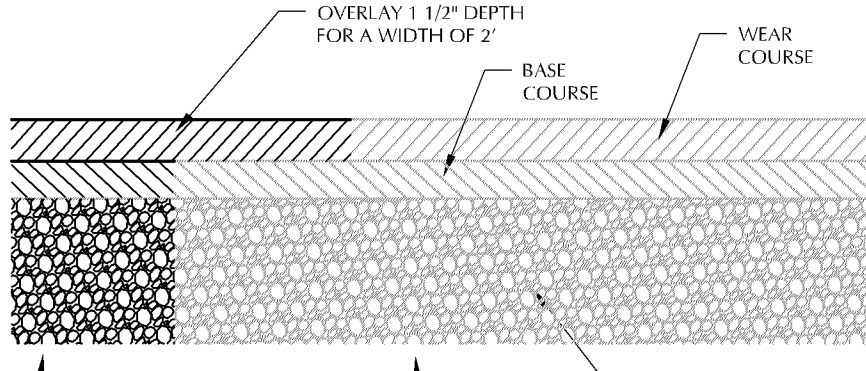
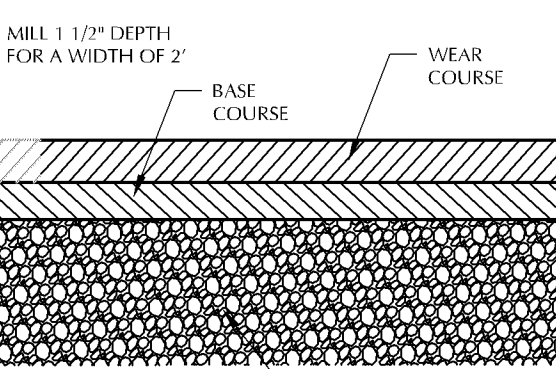
- EACH STORM WATER INLET REQUIRES AN APPROVED INLET PROTECTION DEVICE FROM THE TIME THE CASTING AND RINGS ARE PLACED UNTIL THE SURROUNDING AREAS ARE ESTABLISHED, OR UNTIL DIRECTED BY THE CITY ENGINEER.
- THESE DEVICES SHALL BE REMOVED WHEN THERE IS FROST IN THE GROUND AND REINSTALLED WHEN THE GROUND THAWS.
- THE CONTRACTOR IS RESPONSIBLE FOR THE PLACEMENT, MAINTENANCE, AND REMOVAL OF ALL INLET PROTECTION DEVICES.
- SEALING THE STORM SEWER INLET WITH FABRIC IS NOT AN APPROVED METHOD OF INLET PROTECTION.



STORM SEWER
INLET PROTECTION
CITY OF INVER GROVE HEIGHTS
ENGINEERING DEPARTMENT 4/11 PLATE NO.
EC-04



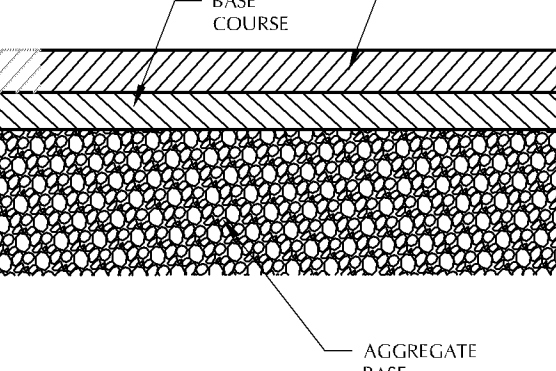
INLET PROTECTION, SEE DETAIL C3-3,
OR USE SILT FENCE FOR FES



LOUCKS

MILL & OVERLAY

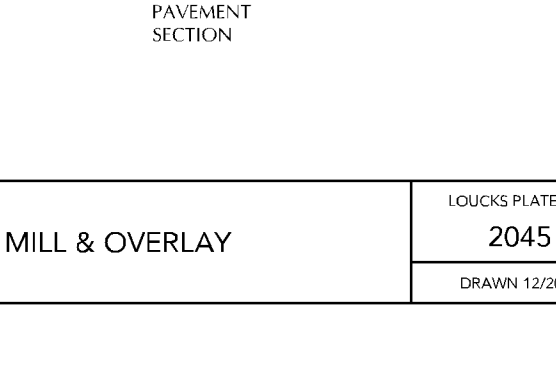
LOUCKS PLATE NO.
2045
DRAWN 12/2016



LOUCKS

BOLLARD

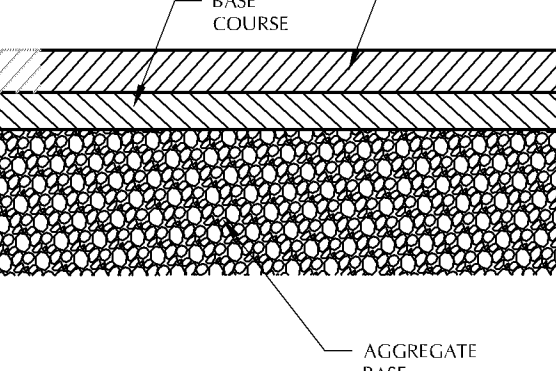
LOUCKS PLATE NO.
2039
DRAWN 12/2016



LOUCKS

B6 STYLE
CONCRETE CURB
AND GUTTER

LOUCKS PLATE NO.
2009
DRAWN 12/2016



LOUCKS

STANDARD BITUMINOUS
PAVEMENT SECTION

LOUCKS PLATE NO.
2031
DRAWN 12/2016