

CASE FILE #PL201800292



AUGMENT/ PROJECT: FIRST TIME INSTALL

SITE NAME: MS90XC545

SPRINT CASCADE: MS90XC545

BU NUMBER: 844362

SITE TYPE: 95'-0" MONOPOLE

DRAWING DESCRIPTION: FINAL CD'S

PLANS PREPARED FOR:

Sprint

6580 Sprint Parkway
Overland Park, Kansas 66251

PLANS PREPARED BY:

POD

POWER OF DESIGN
11490 BLUEGRASS PKWY
LOUISVILLE, KY 40299
502-437-5252

OEM:

MLA PARTNER:

ENGINEERING SEAL

MARK EDWARD PATTERSON

LICENSED PROFESSIONAL ENGINEER

53385

12/11/2018

STATE OF MINNESOTA

DRAWING NOTICE:

THESE DOCUMENTS ARE CONFIDENTIAL AND ARE THE SOLE PROPERTY OF SPRINT AND MAY NOT BE REPRODUCED, DISSEMINATED OR REDISTRIBUTED WITHOUT THE EXPRESS WRITTEN CONSENT OF SPRINT.

REVISIONS:

DESCRIPTION	DATE	BY	REV
PRELIM FOR REVIEW	6.4.18	JMB	A
FOR CONSTRUCTION	7.27.18	EML	0
FOR CONSTRUCTION	10.31.18	EML	1
FOR CONSTRUCTION	12.11.18	KNR	2

SITE NAME:

LYNDALE

SITE CASCADE:

MS90XC545

SITE ADDRESS:

8805 LYNDALE AVENUE
BLOOMINGTON, MN 55420

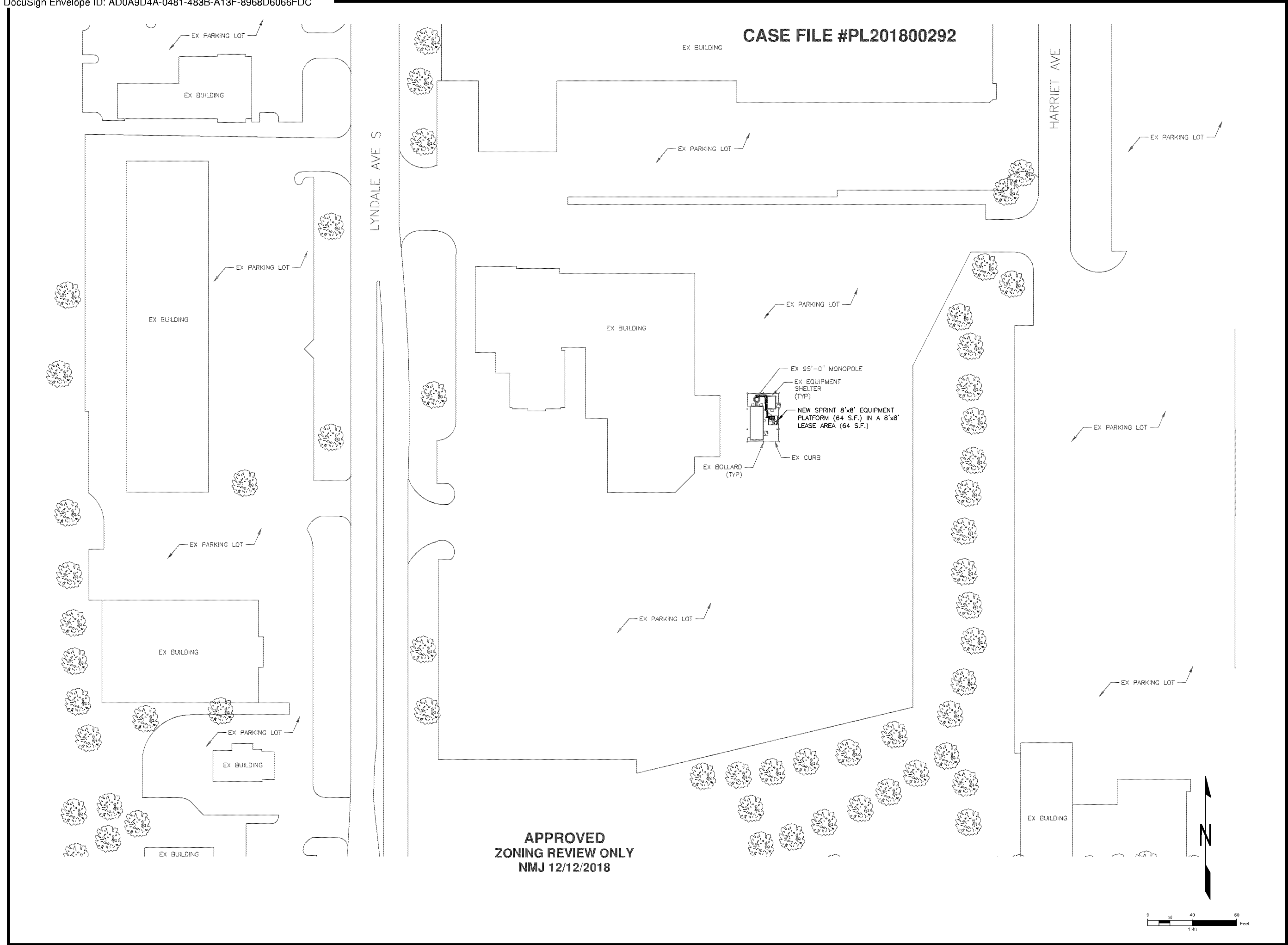
SHEET DESCRIPTION:

TITLE SHEET

SHEET NUMBER:

T-1

SITE INFORMATION	AREA MAP	PROJECT EQUIPMENT	DRAWING INDEX		
<div>SITE ADDRESS:</div> <div>8805 LYNDALE AVENUE BLOOMINGTON, MN 55420</div> <div>LATITUDE (NAD83):</div> <div>44° 50' 39.43" 44.844286</div> <div>LONGITUDE (NAD83):</div> <div>-93° 17' 13.71" -93.287142</div> <div>COUNTY:</div> <div>HENNEPIN</div> <div>ZONING JURISDICTION:</div> <div>HENNEPIN COUNTY</div> <div>ZONING DISTRICT:</div> <div>UNKNOWN</div> <div>SPRINT CM:</div>		<div>NEW SPRINT INSTALLED EQUIPMENT</div> <ul style="list-style-type: none">• INSTALL (1) T-ARM MOUNT• INSTALL (3) SAMSUNG M-MIMO AAU• INSTALL (3) CELWAVE APXVBBL20X_43-C-120• INSTALL (3) SAMSUNG 800MHz RRU• INSTALL (3) SAMSUNG RRH-P4• INSTALL (3) HYBRID CABLE• INSTALL (1) PERFECT VISION EQUIP. PLATFORM W/ADJUSTABLE LEGS• INSTALL (1) RAN EQUIPMENT CABINET• INSTALL (1) BATTERY CABINET (OPTIONAL)• INSTALL (1) H-FRAME w/ PPC & TELCO	SH #	SHEET DESCRIPTION	REV
			T-1	TITLE SHEET / PROJECT INFORMATION	2
			SP-1	SPRINT CONSTRUCTION SPECIFICATIONS	2
			SP-2	SPRINT CONSTRUCTION SPECIFICATIONS	2
			C-1	OVERALL SITE PLAN	2
			C-2	DETAILED SITE PLAN	2
			C-3	TOWER ELEVATION & ANTENNA LAYOUT	2
			C-4	ANTENNA & RRU MOUNTING DETAILS	2
			C-5	ANTENNA & RRU DETAILS	2
			C-6	EQUIPMENT CABINET DETAILS	2
			C-7	EQUIPMENT DETAILS	2
			C-8	EQUIPMENT DETAILS	2
			E-1	ELECTRICAL PLAN	2
			E-2	ELECTRICAL DETAILS	2
			G-1	GROUNDING PLAN	2
			G-2	TOWER EQUIPMENT GROUNDING & DETAILS	2
			G-3	GROUNDING DETAILS	2



APPROVED
ZONING REVIEW ONLY
NMJ 12/12/2018

CASE FILE #PL201800292

PLANS PREPARED FOR:

6580 Sprint Parkway
Overland Park, Kansas 66251

PLANS PREPARED BY:

POWER OF DESIGN
11490 BLUEGRASS PKWY
LOUISVILLE, KY 40299
502-437-5252

OEM:

MLA PARTNER:

ENGINEERING SEAL
MARK EDWARD PATTERSON
LICENSED PROFESSIONAL ENGINEER
53385
12/11/2018
STATE OF MINNESOTA

DRAWING NOTICE:

THESE DOCUMENTS ARE CONFIDENTIAL AND ARE THE SOLE PROPERTY OF SPRINT AND MAY NOT BE REPRODUCED, DISSEMINATED OR REDISTRIBUTED WITHOUT THE EXPRESS WRITTEN CONSENT OF SPRINT.

REVISIONS:

DESCRIPTION	DATE	BY	REV
PRELIM FOR REVIEW	6.4.18	JMB	A
FOR CONSTRUCTION	7.27.18	EML	0
FOR CONSTRUCTION	10.31.18	EML	1
FOR CONSTRUCTION	12.11.18	KNR	2

SITE NAME:

LYNDALE

SITE CASCADE:

MS90XC545

SITE ADDRESS:

8805 LYNDALE AVENUE
BLOOMINGTON, MN 55420

SHEET DESCRIPTION:

OVERALL SITE PLAN

SHEET NUMBER:

C-1

CASE FILE #PL201800292

PLANS PREPARED FOR:

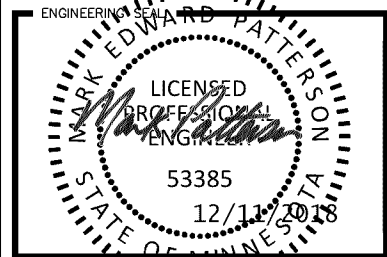
Sprint
6580 Sprint Parkway
Overland Park, Kansas 66251

PLANS PREPARED BY:

POD
POWER OF DESIGN
11490 BLUEGRASS PKWY
LOUISVILLE, KY 40299
502-437-5252

OEM:

MLA PARTNER:



DRAWING NOTICE:

THESE DOCUMENTS ARE CONFIDENTIAL AND ARE THE SOLE PROPERTY OF SPRINT AND MAY NOT BE REPRODUCED, DISSEMINATED OR REDISTRIBUTED WITHOUT THE EXPRESS WRITTEN CONSENT OF SPRINT.

REVISIONS:				
DESCRIPTION	DATE	BY	REV	
PRELIM FOR REVIEW	6.4.18	JMB	A	
FOR CONSTRUCTION	7.27.18	EML	0	
FOR CONSTRUCTION	10.31.18	EML	1	
FOR CONSTRUCTION	12.11.18	KNR	2	

SITE NAME:

LYNDALE

SITE CASCADE:

MS90XC545

SITE ADDRESS:

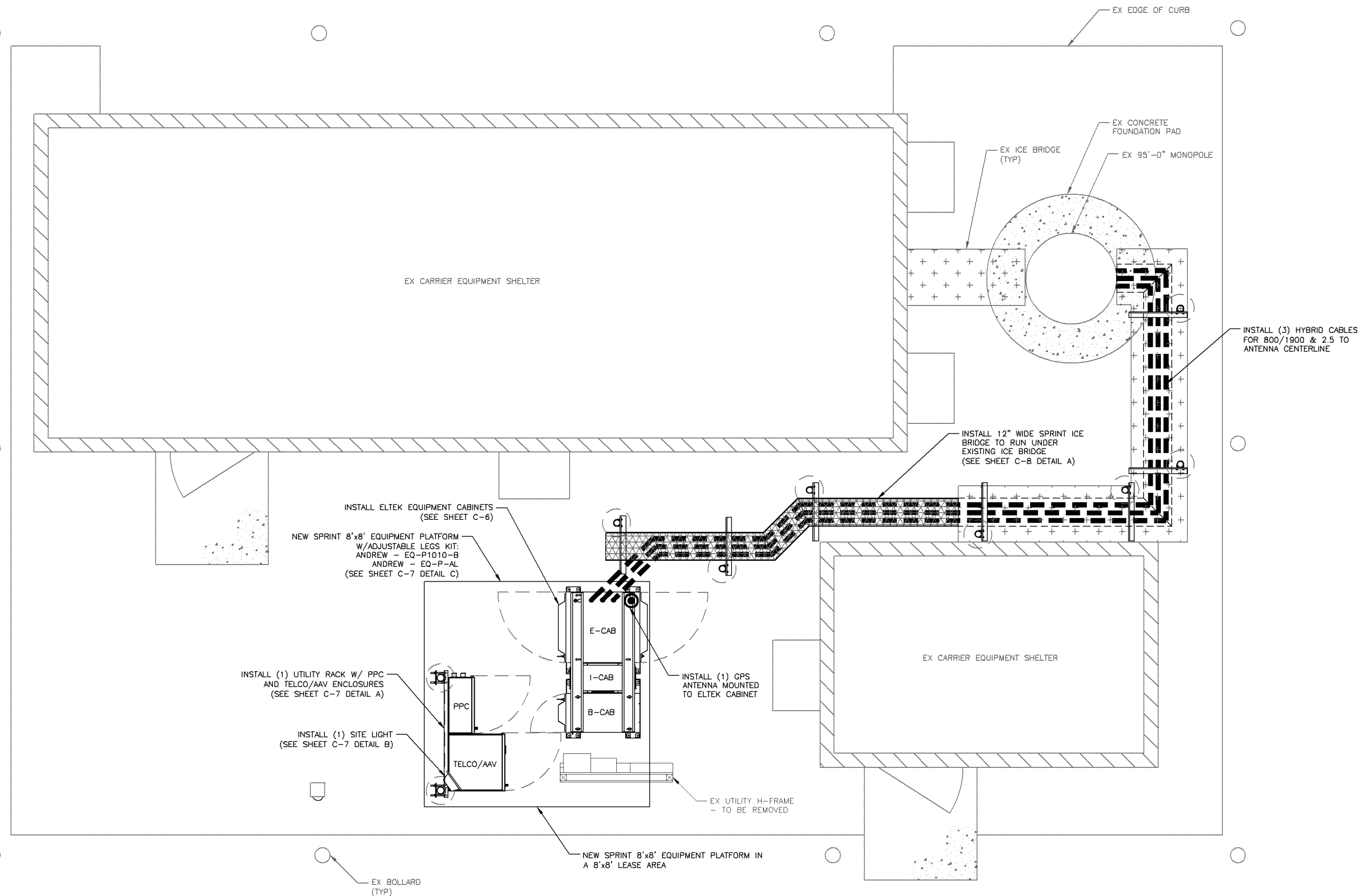
8805 LYNDALE AVENUE
BLOOMINGTON, MN 55420

SHEET DESCRIPTION:

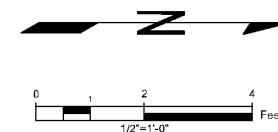
DETAILED SITE PLAN

SHEET NUMBER:

C-2

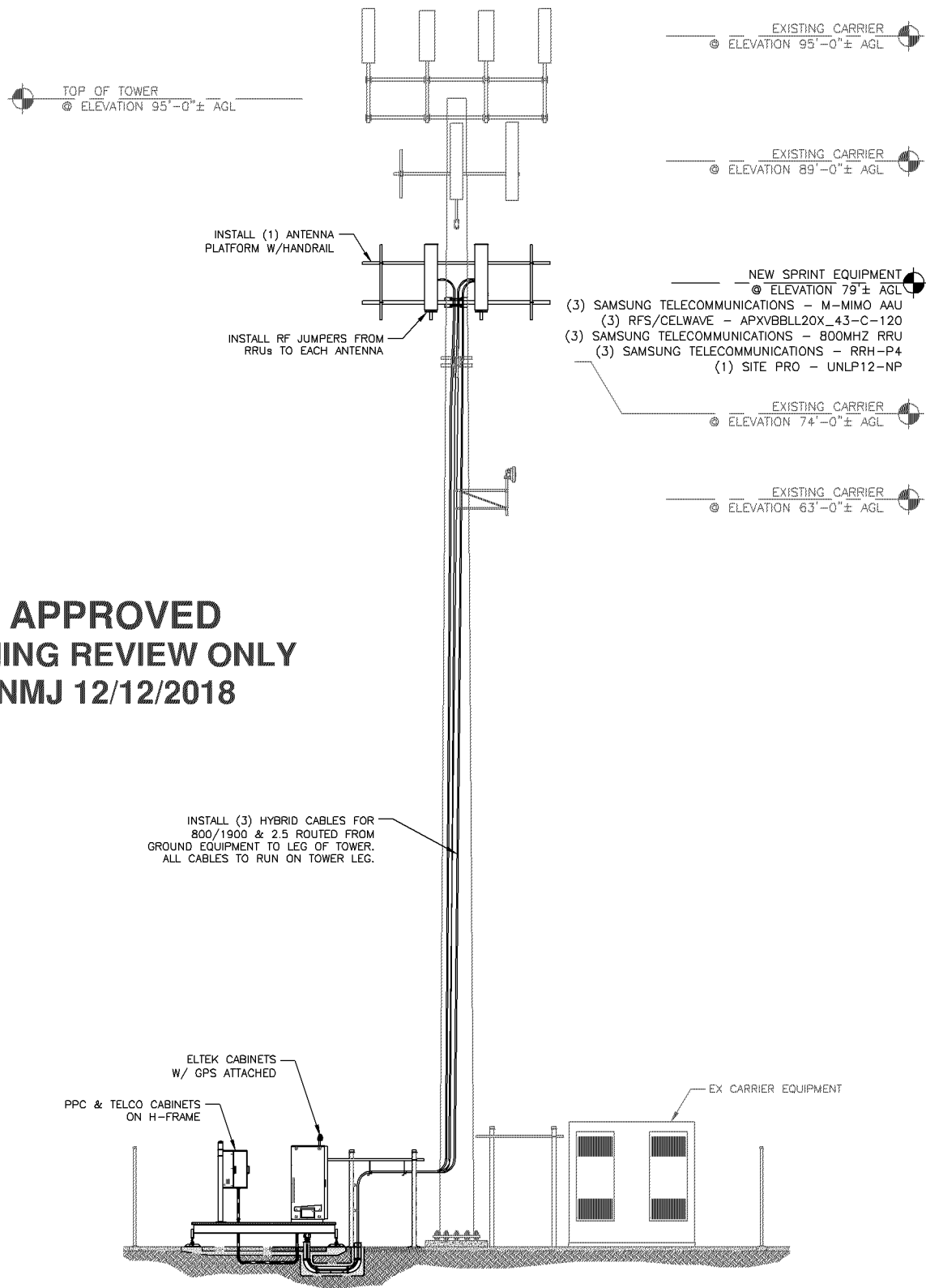


APPROVED
ZONING REVIEW ONLY
NMJ 12/12/2018



CASE FILE #PL201800292

APPROVED
ZONING REVIEW ONLY
NMJ 12/12/2018



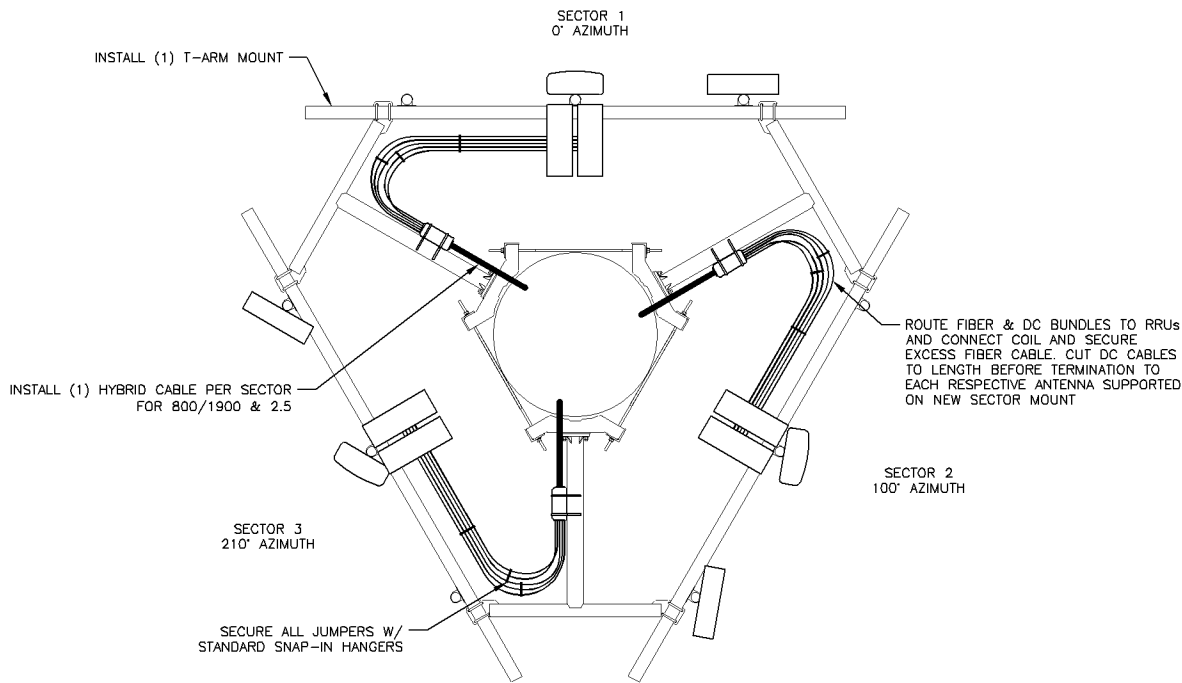
TOWER ELEVATION

N.T.S.

A

NOTE:

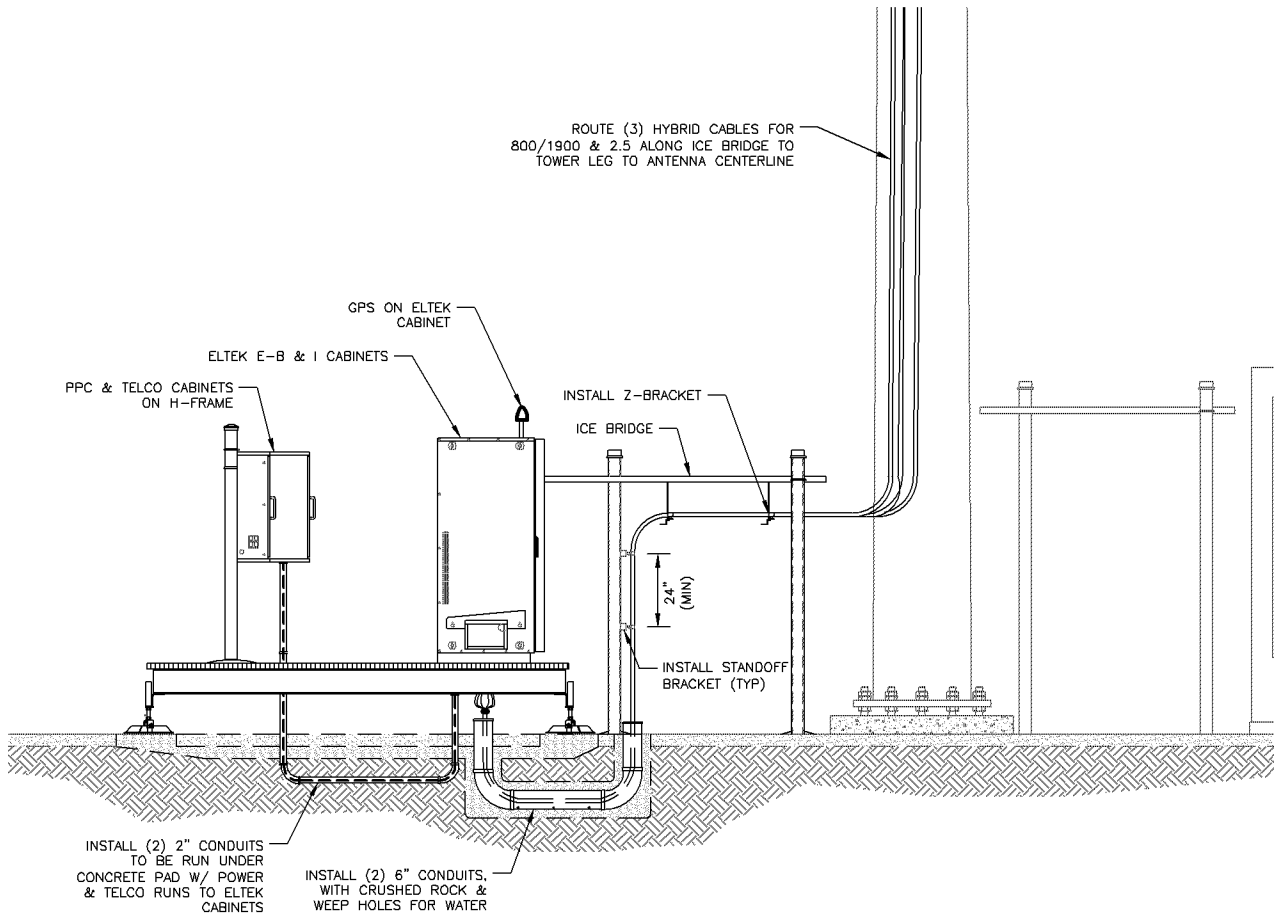
ALL ANTENNA AZIMUTHS BASED ON TRUE NORTH AS SPECIFIED BY RFDS, LATEST REVISION.



EQUIPMENT PLAN VIEW w/ CABLE ROUTING

N.T.S.

B



EQUIPMENT SIDE VIEW w/ CABLE ROUTING

N.T.S.

C

PLANS PREPARED FOR:

Sprint
6580 Sprint Parkway
Overland Park, Kansas 66251

PLANS PREPARED BY:

POD
POWER OF DESIGN
11490 BLUEGRASS PKWY
LOUISVILLE, KY 40299
502-437-5252

OEM:

MLA PARTNER:

ENGINEERING SEAL
MARK EDWARD PATTERSON
LICENSED PROFESSIONAL ENGINEER
53385
12/11/2018
STATE OF MINNESOTA

DRAWING NOTICE:

THESE DOCUMENTS ARE CONFIDENTIAL AND ARE THE SOLE PROPERTY OF SPRINT AND MAY NOT BE REPRODUCED, DISSEMINATED OR REDISTRIBUTED WITHOUT THE EXPRESS WRITTEN CONSENT OF SPRINT.

REVISIONS:				
DESCRIPTION	DATE	BY	REV	
PRELIM FOR REVIEW	6.4.18	JMB	A	
FOR CONSTRUCTION	7.27.18	EML	0	
FOR CONSTRUCTION	10.31.18	EML	1	
FOR CONSTRUCTION	12.11.18	KNR	2	

SITE NAME:

LYNDALE

SITE CASCADE:

MS90XC545

SITE ADDRESS:

8805 LYNDALE AVENUE
BLOOMINGTON, MN 55420

SHEET DESCRIPTION:

TOWER ELEVATION &
CABLE LAYOUT

SHEET NUMBER:

C-3