

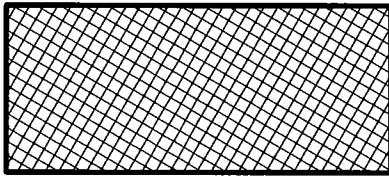
**HARRY S. JOHNSON**  
**LAND SURVEYORS**

9063 Lyndale Ave. So. Bloomington, MN. 55420  
phone: 952-884-5341 fax: 952-884-5344

**Vacation of Drainage & Utility**  
**Easements of Mount One Addition**

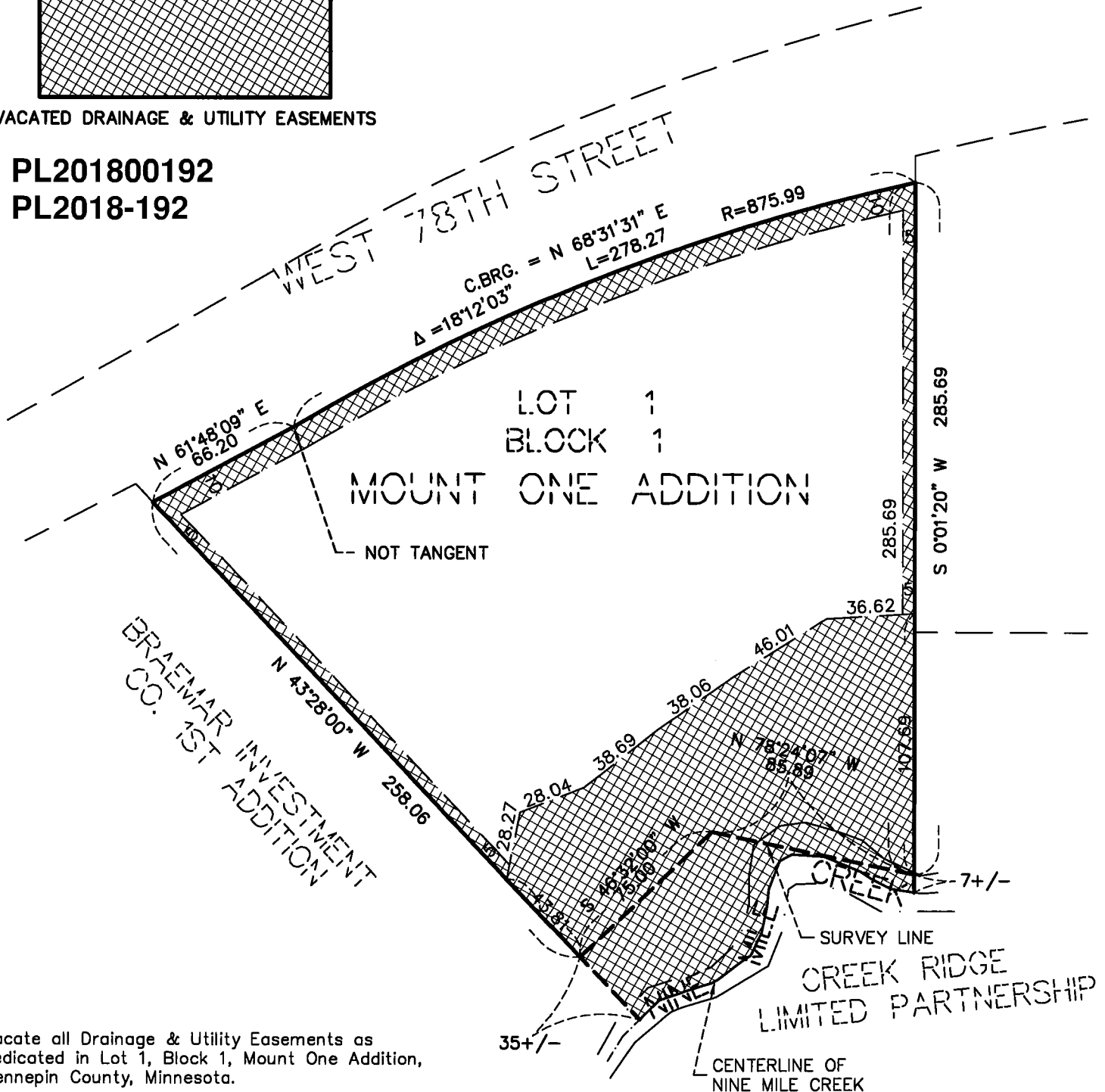
for

***Frauenshuh 2nd Addition***



VACATED DRAINAGE & UTILITY EASEMENTS

**PL201800192**  
**PL2018-192**



Vacate all Drainage & Utility Easements as  
dedicated in Lot 1, Block 1, Mount One Addition,  
Hennepin County, Minnesota.

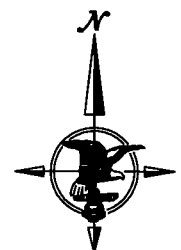
General Notes:

1. Bearings shown based on the plat of Mount One Addition.

I hereby certify that this survey, plan or report was prepared by me  
or under my direct supervision and that I am a duly Registered Land  
Surveyor under the laws of the State of Minnesota.

Date: May 2, 2018

*Thomas E. Hodorff*  
Thomas E. Hodorff, L.S. MN Reg. No. 23677



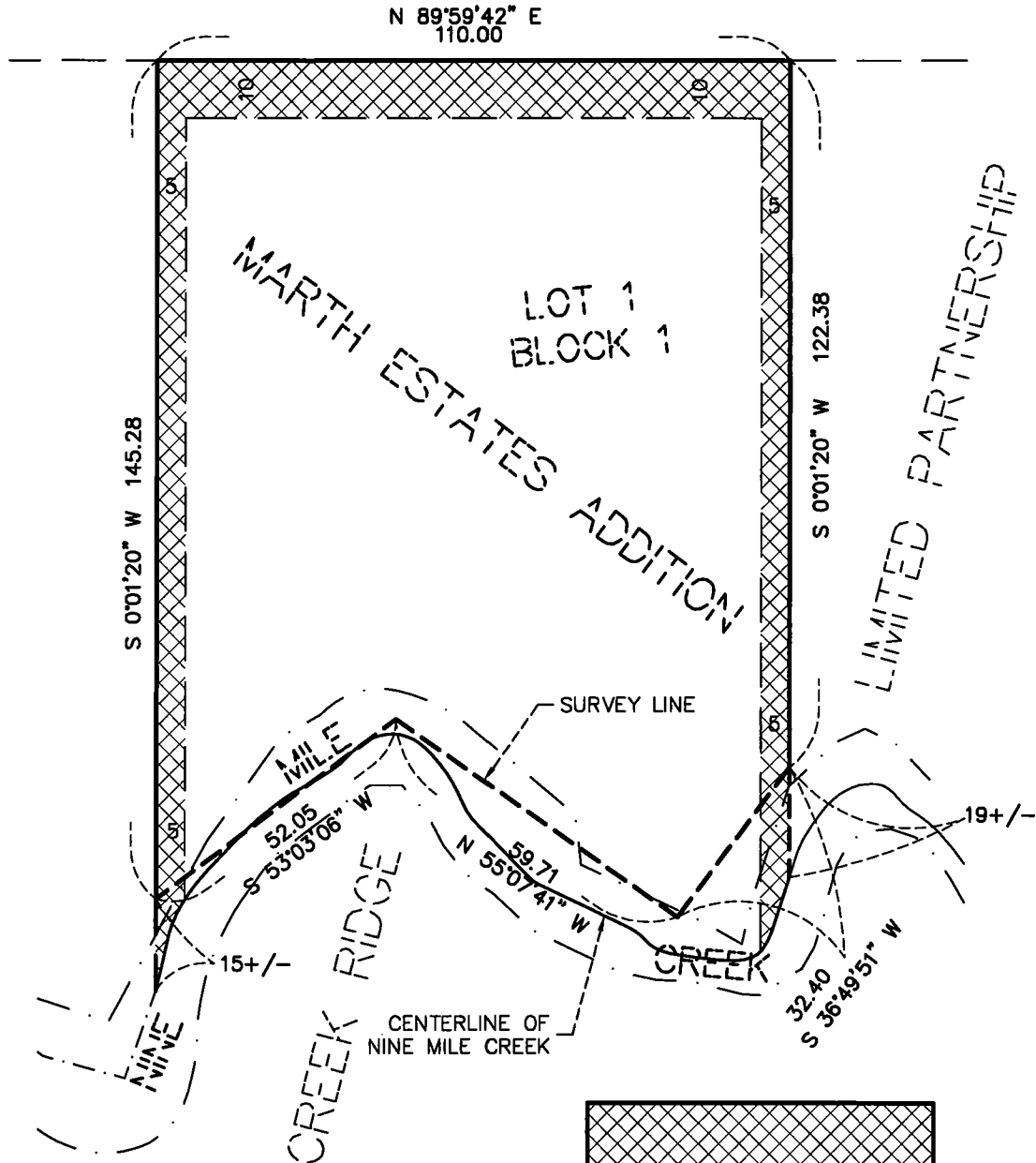
SCALE: 1" = 60'

HSJ WO: 2018204VAC.DWG

**PL201800192**

**PL2018-192**

WEST 78TH STREET



Vacate all Drainage & Utility Easements as dedicated in Lot 1, Block 1, Marth Estates Addition, Hennepin County, Minnesota.

General Notes:

1. Bearings shown based on the plat of Marth Estates Addition.

I hereby certify that this survey, plan or report was prepared by me or under my direct supervision and that I am a duly Registered Land Surveyor under the laws of the State of Minnesota.

Date: May 2, 2018

*Thomas E. Hadorff*  
Thomas E. Hadorff, L.S. MN Reg. No. 23677

VACATED DRAINAGE & UTILITY EASEMENTS



SCALE: 1" = 30'

HSJ WO: 2018204VAC.DWG