


CASE FILE #PL201800344

APPROVED
ZONING REVIEW ONLY
NMJ 04/02/2019




**CITY OF
BLOOMINGTON
MINNESOTA**

**THE CITY OF
BLOOMINGTON,
MINNESOTA**

2301 EAST 86th STREET
BLOOMINGTON, MN 55425

**BLOOMINGTON FIRE
STATION NO. 3**

BID SET



401 2nd Avenue North, Suite 206
Minneapolis, MN 55401
www.wendelcompanies.com
651.401.1401

Wendel W/D Architecture, Engineering, Surveying and
Landscape Architecture, P.C.

Five Bugles Design

I hereby certify that this plan, specification, or report was
prepared by me or under my direct supervision and that I am a
 duly Licensed Architect under the laws of the State of Minnesota.

Architect: *Jon C. Fink*

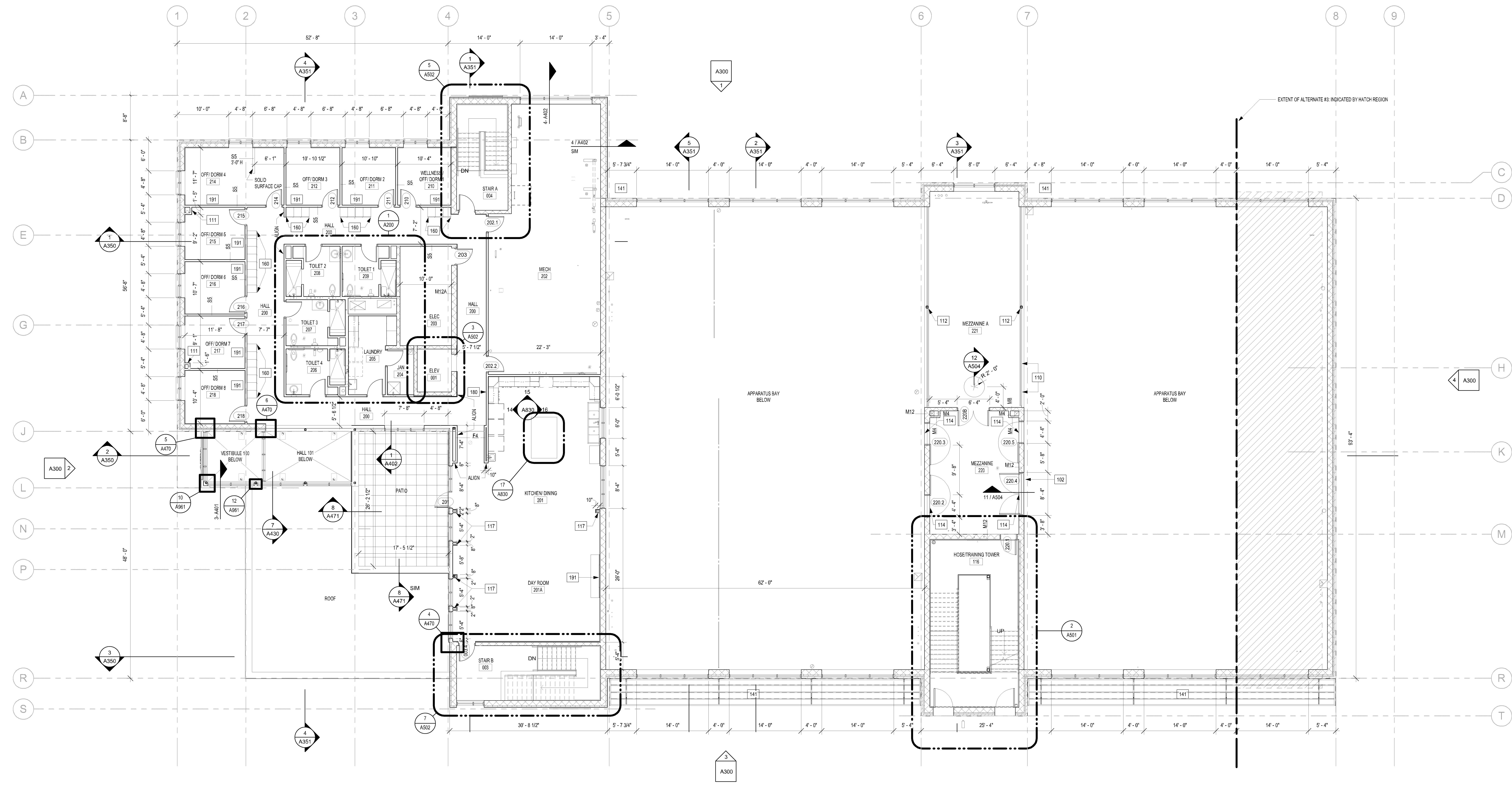
Date: 02/28/19 Reg. No. 15871

- FLOOR PLAN GENERAL NOTES:**
- A. INTERIOR DIMENSIONS:
1. WALLS: FACE WALL, NOMINAL
2. OPENINGS: INSIDE FACE OF OPENING.
- B. WOOD BLOCKING:
1. PROVIDE SOLID BLOCKING FOR WALL AND SOFFIT MOUNTED PRODUCTS AND
EQUIPMENT INDICATED ON DRAWINGS.
2. COORDINATE WITH OWNER BEFORE GYPSUM BOARD INSTALLATION FOR
ANY WOOD BLOCKING REQUIRED FOR OWNER PROVIDED EQUIPMENT.
- C. FIRE EXTINGUISHERS:
F.E. - WALL MOUNTED
R.E. - RECESSED IN WALL
- D. REFER TO STRUCTURAL DRAWINGS FOR EXACT LOCATIONS OF COLUMNS.
E. REFER TO SHEET A010 FOR CODE PLAN AND LOCATIONS OF FIRE CONSTRUCTION
F. MOVEMENT JOINTS:
CMU CONTROL JOINT (25'-6" OC MAX) REFER TO SPECIFICATIONS
- G. CONSTRUCTION JOINTS: REFER TO STRUCTURAL PLANS FOR CONSTRUCTION JOINT
LOCATIONS. THE CONTRACTOR SHALL SUBMIT THE PROPOSED LOCATIONS OF
CONSTRUCTION JOINTS TO THE ENGINEER FOR APPROVAL.
- H. REFER TO SHEET A001 FOR WALL TYPES, WALLS TO EXTEND TO DECK, UNO.
I. HINGE SIDE OF DOOR FRAMES IN CMU WALLS SHALL BE 4" FROM PERPENDICULAR
WALL UNO.
- J. HINGE SIDE OF DOOR FRAMES IN GYP. BD. WALLS SHALL BE 3" FROM PERPENDICULAR
WALL UNO.
- L. REFER TO INTERIOR FINISH SHEETS FOR PAINT COLORS

FLOOR PLAN KEY NOTES	
No	Description
101	BOLLARD, SEE CIVIL
102	STEEL PIPE GUARDRAIL, PNT-X
103	STEEL PIPE HANDRAIL, PNT-X
104	2'-0" H STEEL GUARDRAIL, BOLTED TO CONC FLOOR. VERIFY LOCATION WITH OWNER, PNT-S
110	REMOVABLE STEEL PIPE GUARDRAIL, PNT-X. SEE DTL 1/503
111	FURR AROUND COL, PIPE, CONDUIT OR DUCT - SEE WALL TYPE F4-COORD W/ MECH & ELEC
112	COLUMN PNT-X, SEE STRUCT
113	EMBED ANCHOR POINT - 2'-0" AFF, COORDINATE FINAL LOCATION WITH OWNER
114	EMBED ANCHOR POINT 1'-4" ABOVE OPENING, COORDINATE FINAL LOCATION WITH OWNER
115	EMBED ANCHOR POINT 2'-0" BELOW CLERESTORY WINDOWS, COORDINATE FINAL LOCATION WITH OWNER

FLOOR PLAN KEY NOTES	
No	Description
116	EMBED ANCHOR POINT 6'-0" AFF, COORDINATE FINAL LOCATION WITH OWNER
117	WALLS ALL F4, NORTH AND SOUTH FACES TO ALGIN WITH GYP BD SOFFIT ABOVE
121	INSTALL (4) 4'X 6' MIRRORS CENTERED ON WALL. TOP OF MIRROR 8'-0" AFF
122	MARKER BOARD BY OWNER
123	INSTALL (2) 4'X 6' MIRRORS CENTERED ON WALL. TOP OF MIRROR 8'-0" AFF
130	ADA DOOR OPERATORS, FIELD VERIFY EXACT LOCATIONS OF OPERATORS IN THE FIELD WITH ARCHITECT
140	CANOPY ABOVE
141	CANOPY BELOW
150	REMOVABLE METAL GRATE
151	MANHOLE ABOVE

FLOOR PLAN KEY NOTES	
No	Description
160	18" WIDE LOCKER SEE DTL 12/A850
162	16" WIDE LOCKER SEE DTL 12/A850
163	20" x 20" GEAR GRID LOCKERS BY OWNER.
170	STAINLESS STEEL SINK. SEE PLUMBING.
171	VENDING MACHINE BY OWNER
172	ICE MACHINE BY OWNER
174	COPIER BY OWNER
180	FIRE EXTINGUISHER CABINET.
181	ELECTRIC HAND DRYER - SEE ELECT
182	EWG
183	NOT USED
184	TRENCH DRAIN BY MECH
185	FIRE EXTINGUISHER ON WALL BRACKET
190	AV RACK SEE ELEC
191	TV BY OWNER

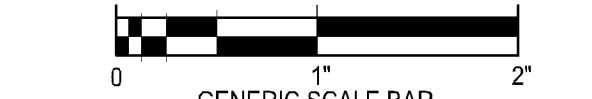


1 SECOND FLOOR PLAN
SCALE: 1/8" = 1'-0"

NO. REVISIONS DATE

DWG. TITLE

SECOND FLOOR PLAN



GENERIC SCALE BAR
SCALE BAR SHOWN IS PROPORTIONAL TO THE ORIGINAL DRAWING
IF NOT PROPORTIONAL TO THIS SHEET, ADJUST ACCORDINGLY

DATE: 02-28-19

SCALE: 1/8" = 1'-0"

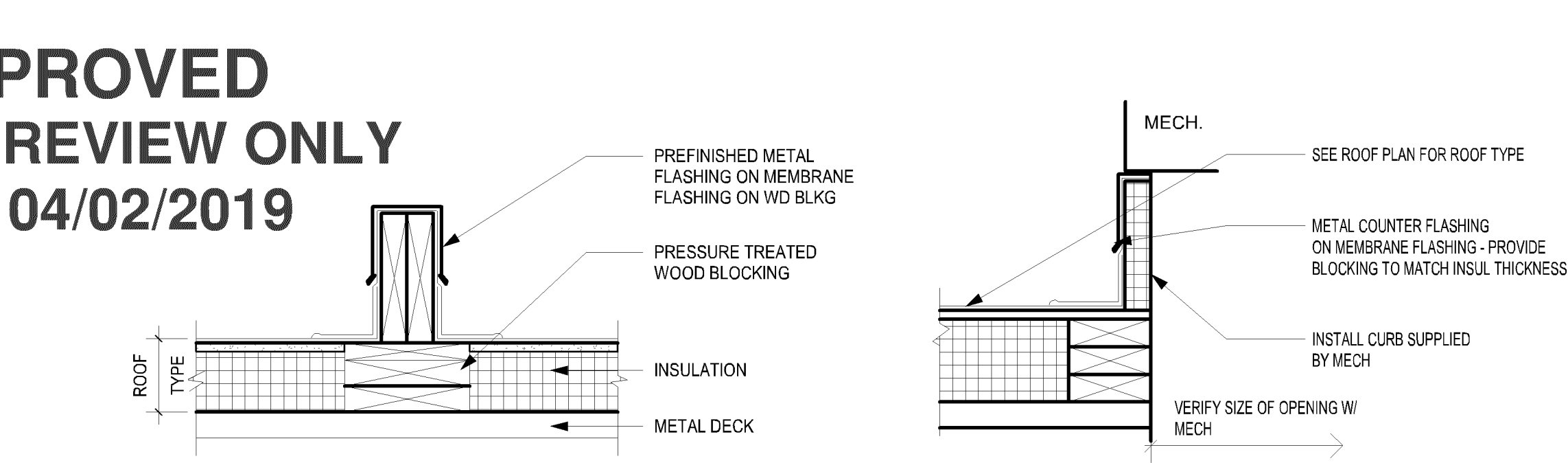
DRAWN: Author CHK: Checker

PROJ. NO: 484401 CLIENT: No. 2017-56

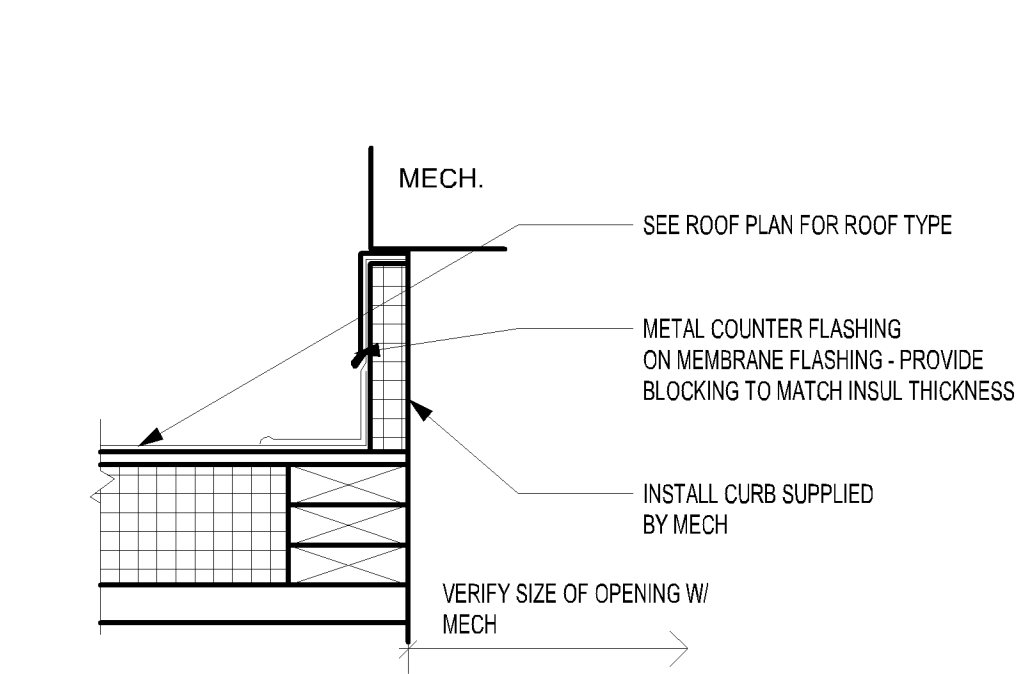
DWG. No.

A102

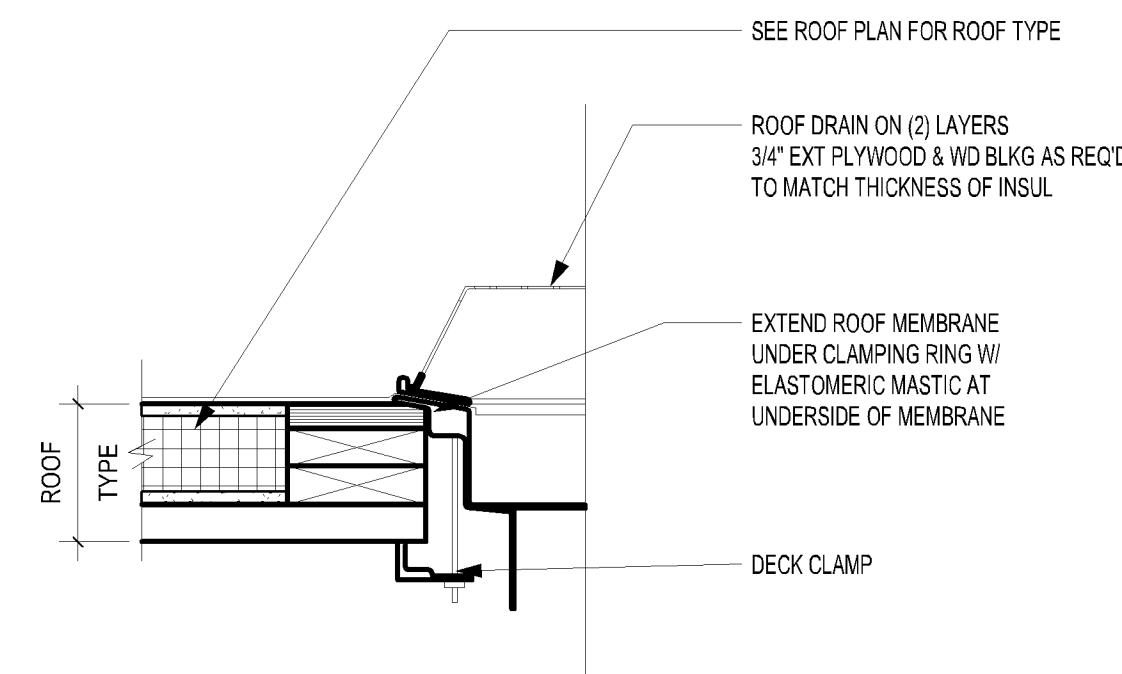
APPROVED
ZONING REVIEW ONLY
NMJ 04/02/2019



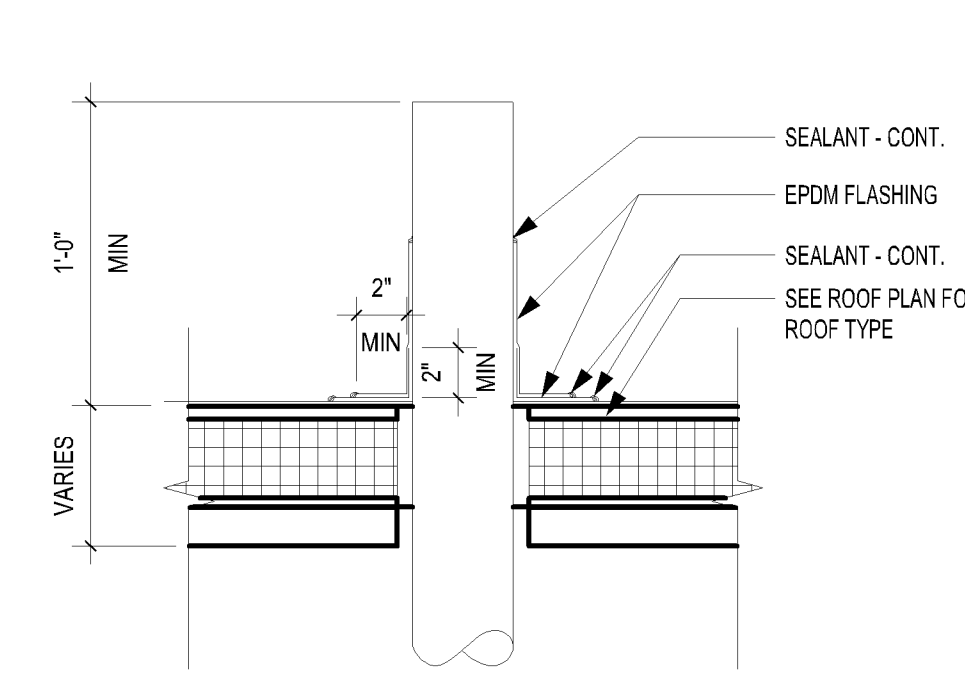
2 ROOF CURB
SCALE: 1 1/2" = 1'-0"



3 MECH ROOF CURB
SCALE: 1 1/2" = 1'-0"





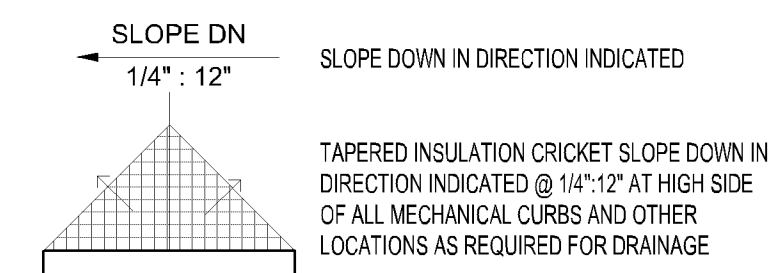
4 ROOF DRAIN
SCALE: 1 1/2" = 1'-0"



5 VENT PIPE
SCALE: 1 1/2" = 1'-0"

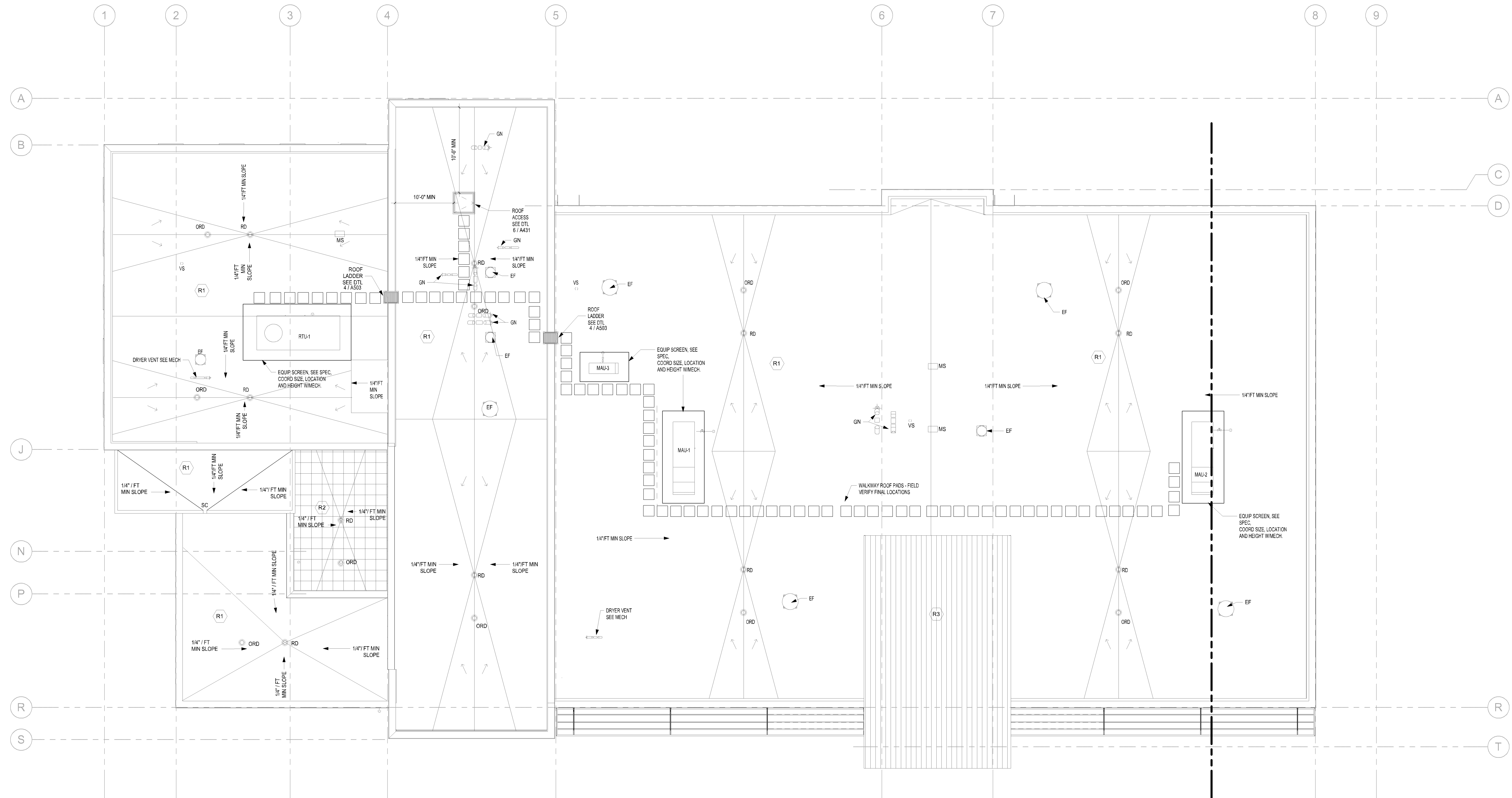
- R1**
 - ROOF ASSEMBLY TYPE 1
 - 89 MILL FULLY ADHERED EPDM ROOFING
 - 1/2" COVER BOARD
 - 7.5 LAYERED POLYISOCYANURATE INSUL
 - WAPOR BARRIER
 - 1/2" SUBSTRATE BOARD
 - METAL DECK
 - CRICKETS AS REQD
- R2**
 - ROOF ASSEMBLY TYPE 2
 - CONCRETE PENETAL PAVERS
 - 21 LAYERS 89 MILL FULLY ADHERED EPDM ROOFING
 - 1/2" COVER BOARD
 - 7.5 LAYERED POLYISOCYANURATE INSUL
 - WAPOR BARRIER
 - 1/2" SUBSTRATE BOARD
 - METAL DECK
 - CRICKETS AS REQD
- R3**
 - ROOF ASSEMBLY TYPE 3
 - STANDING SEAM METAL ROOF PANELS
 - UNDER PAVEMENT
 - 4" POLYURETHANE INSULATION - STAGGER JOINTS
 - 1/2" SUBSTRATE BOARD
 - STEEL ROOF DECK ON SLOPED STRUCTURE

	RD	ROOF DRAIN - SEE 4A150
	ORD	OVERFLOW ROOF DRAIN - SEE 4A150
	EF	EXHAUST FAN BY MECH
	GN	GOOSENECK BY MECH
	IH	INTAKE HOOD BY MECH
	MAU	MAKE UP AIR UNIT BY MECH - TO BE SCREENED, SEE EQUIPMENT SCREENING SPEC SECTION
	MS	MINI SPLIT BY MECH
	OS	OVERFLOW SCUPPER
	RTU	ROOF TOP UNIT BY MECH - SEE DATA CURB TO BE SCREENED COORDINATE MECH AND SEE ROOF TOP EQUIPMENT SECTION
	SC	SCUPPER
	VS	VENT STACK BY MECH - SEE 5A150

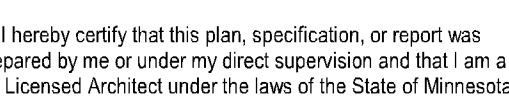
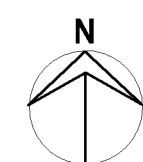


NOTE:

1. VERIFY SCUPPER LOCATIONS WITH ARCHITECTURAL ELEVATIONS
2. VERIFY SIZE AND LOCATION OF REQUIRED MECH OPENINGS WITH MECHANICAL



1 ROOF PLAN
SCALE: 1/8" = 1'-0"



Jeri C. Fink

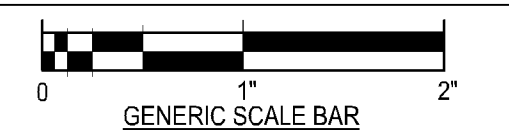
John C. Fink

02/28/19 Reg. No. 15871

NOTE:
THIS DOCUMENT, AND THE IDEAS AND DESIGNS INCORPORATED HEREIN, ARE INSTRUMENTS OF PROFESSIONAL SERVICE. IT IS THE PROPERTY OF THE ARCHITECT-ENGINEER AND IS NOT TO BE USED IN WHOLE OR IN PART, FOR ANY PROJECT WITHOUT THE WRITTEN AUTHORIZATION OF THE ARCHITECT-ENGINEER. UNAUTHORIZED ALTERATION OR ADDITION TO ANY SURVEY, DRAWING, DESIGN, SPECIFICATION, PLAN OR REPORT IS PROHIBITED IN ACCORDANCE WITH STATE LAW, CODE AND RULES.

[illegible]

ROOF PLAN



SCALE BAR SHOWN IS TWO INCHES ON THE ORIGINAL DRAWING, IF NOT TWO INCHES ON THIS SHEET, ADJUST ACCORDINGLY			
DATE	02.28.19		
SCALE	As indicated		
WN.	Author	CHK.	Checker
REQ. No.	484401	CLIENT. No.	2017-5
WG. No.			

A150

