

DRAWING PHASE:	
	OWNER REVIEW
	AGENCY REVIEW
	BID DOCUMENT
✓	FOR CONSTRUCTION
	AS-BUILT DOCUMENT

I HEREBY CERTIFY THAT THIS
PLAN, SPECIFICATION OR
REPORT WAS PREPARED BY ME
OR UNDER MY DIRECT
SUPERVISION AND THAT I AM A
DULY LICENSED PROFESSIONAL
ENGINEER UNDER THE LAWS OF
THE STATE OF MINNESOTA.

TODD A. ERICKSON, PE
40418
LICENSE NO.
03/26/2019
DATE:

DEVELOPER
HOM FURNITURE
10301 Woodcrest Drive NW
Coon Rapids, Minnesota 55433

HOM FURNITURE
7800 Dupont Avenue South
Bloomington, Minnesota

[illegible]

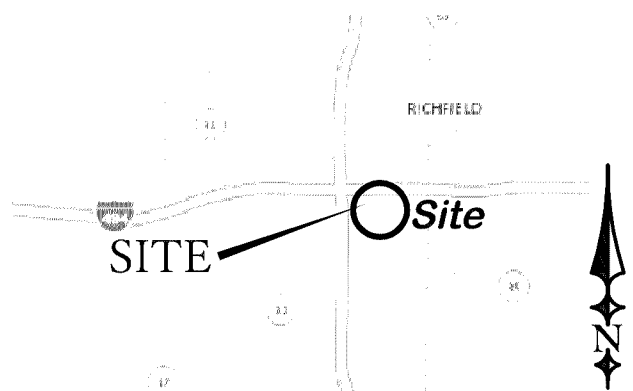
JOB NO. 15-123

SHEET TITLE
EXISTING
CONDITIONS &
DEMO PLAN

SHEET NO.

C1

SHEET 1 OF 7



VICINITY MAP








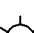


NO SCALE

SCALE 1 INCH = 30 FEET



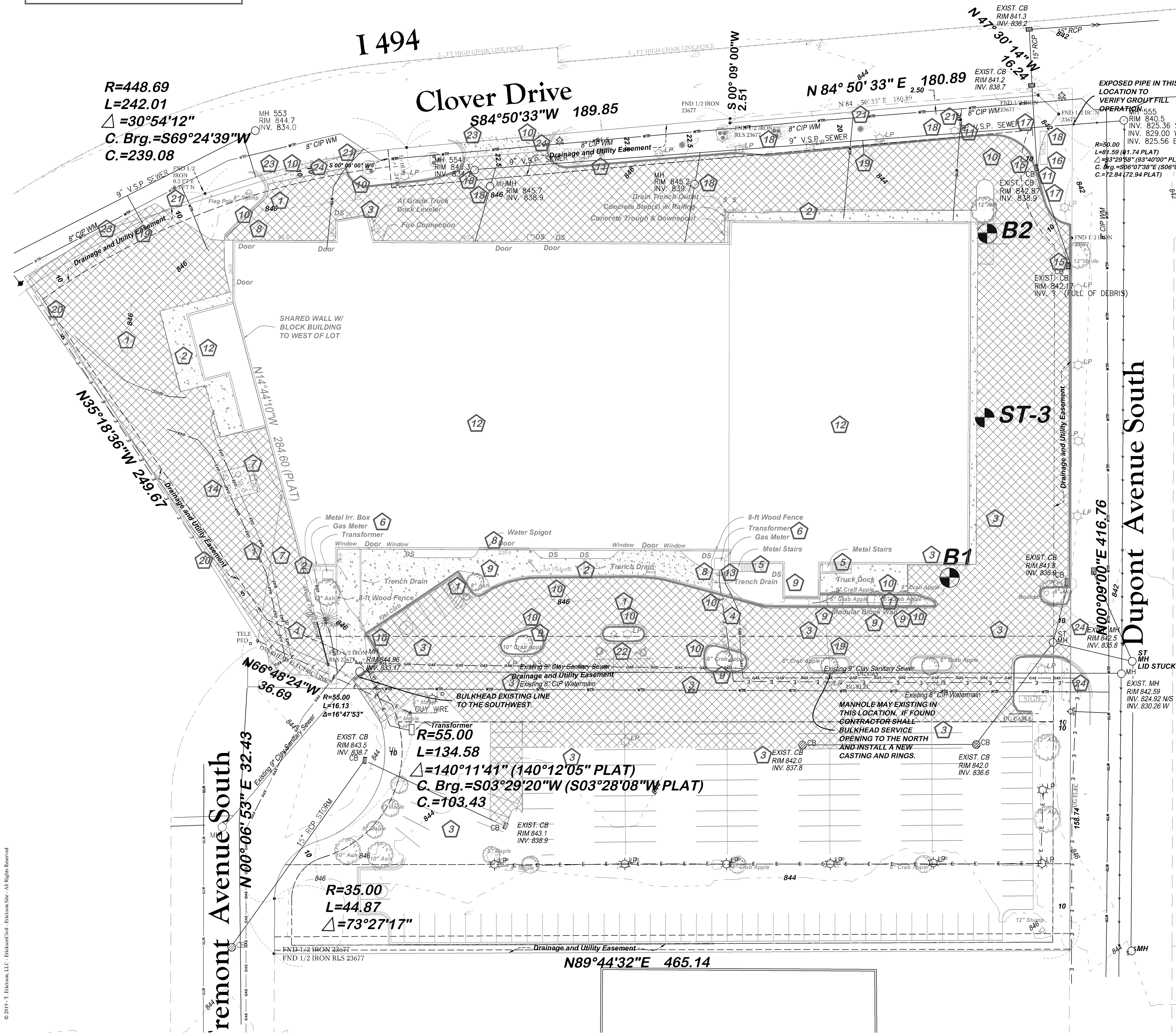
GRAPHIC SCALE

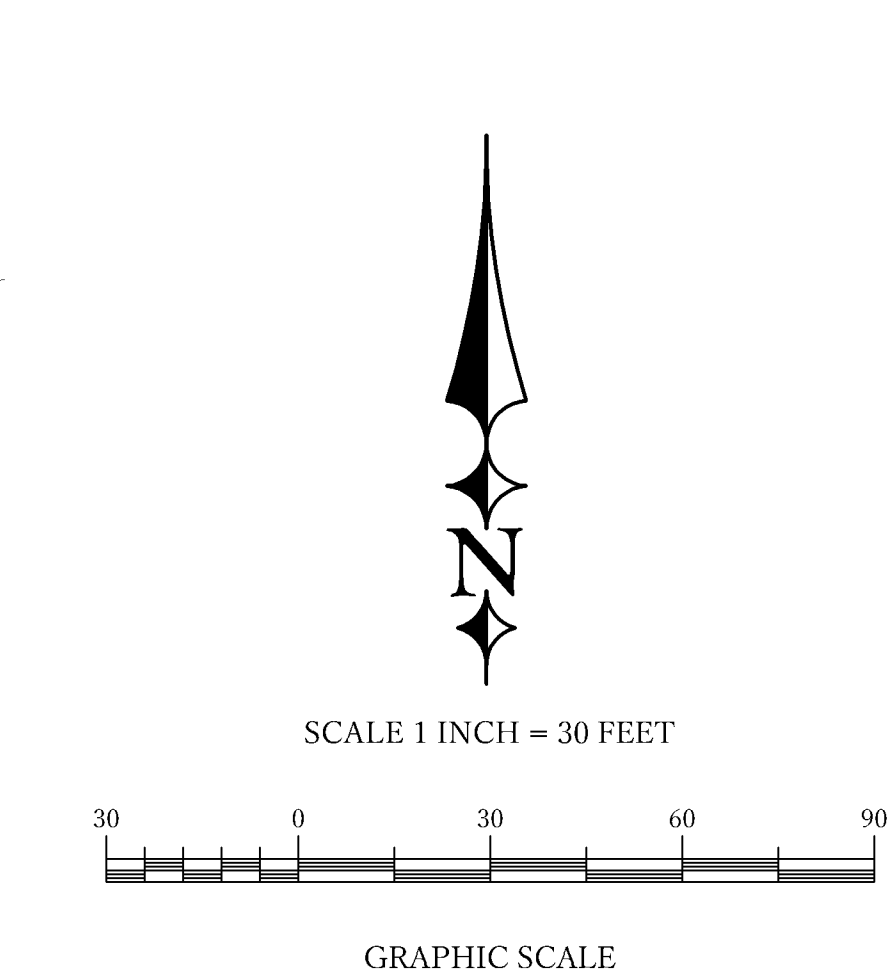
Legend

- | | |
|---|--|
| • | EXISTING PROPERTY BOUNDARY |
|  | NOTES FOUND IRON PIPE. MATERIAL, TYPE AS INDICATED |
|  | NOTES FIRE HYDRANT. |
|  | NOTES STORM CATCH BASIN. |
|  | NOTES STORM/SANITARY MANHOLE |
|  | NOTES DOWNSPOUT |
|  | NOTES CLEANOUT |
|  | NOTES LIGHT POLE |
|  | NOTES POWER POLE (OVERHEAD ELECTRICAL LINES) |
|  | NOTES PARKING STALL COUNT |
| | DENOTES EXISTING BITUMINOUS SURFACE TO REMAIN |
| | DENOTES EXISTING CONCRETE SURFACE |
|  | DENOTES EXISTING BIT. REMOVAL AREA |

Keyed Notes

- 1 REMOVE EXISTING BITUMINOUS PAVEMENT AND BASE MATERIAL.
- 2 REMOVE EXISTING CONCRETE PAVEMENT AND BASE MATERIAL.
- 3 SAW CUT BIT. EDGE PRIOR TO REMOVAL.
- 4 REMOVE AND DISPOSE OF EXISTING MODULAR BLOCK WALL.
- 5 REMOVE AND DISPOSE OF EXISTING METAL STAIRWAY.
- 6 TRANSFORMER AND GAS METER TO BE RELOCATED.
- 7 WORK WITH XCEL ENERGY TO RELOCATE OVERHEAD ELECTRIC LINE
- 8 EXISTING WALL/PORTION OF BUILDING TO BE REMOVED (SEE ARCHITECTURAL)
- 9 REMOVE AND DISPOSE OF EXISTING TREE
- 10 REMOVE AND DISPOSE OF CONCRETE CURB AND GUTTER.
- 11 PYLON SIGN(S) TO BE REMOVED AND A NEW ONE INSTALLED (SEE ARCHITECTURAL DRAWINGS FOR NEW LOCATION)
- 12 DEMO EXISTING BUILDING
- 13 WORK WITH XCEL ENERGY ON REPLACEMENT FOR TRANSFORMER
- 14 REMOVE EXISTING UNDERGROUND STORAGE TANK (BY OTHERS)
- 15 REMOVE CATCH BASIN
- 16 REMOVE EXISTING SIGN
- 17 REMOVE EXISTING STORM PIPE
- 18 REMOVE EXISTING TOP SECTION SANITARY MANHOLE, BACKFILL WITH SAND. GROUT FILL EXISTING SANITARY SEWER LINE.
- 19 ABANDON EXISTING SEWER SERVICE, BULK HEAD AT MAIN OR PROPERTY LINE OR AS REQUIRED BY CITY ENGINEER.
- 20 REMOVE EXISTING ELECTRICAL HOOKUPS ALONG WEST PROPERTY LINE
- 21 REMOVE EXISTING WATER SERVICES TO MAIN. REPAIR STREET AND CURB TO CITY STANDARDS. SAW CUT TO LANE WIDTH / CENTERLINE FOR REMOVAL.
- 22 REMOVE EXISTING HYDRANT AND LEAD TO MAIN. INSTALL M.J. PLUG AND THRUST BLOCK AT TEE ON MAIN.
- 23 SAW CUT BIT. 2-FT OUT FROM TOE OF EXISTING CURB, REMOVE AND REPLACE CURB WITH NEW BARRIER CURB TO MATCH EXISTING.
- 24 REMOVE EXISTING CONCRETE APRON.





EXISTING PROPERTY BOUNDARY

PROPOSED CONCRETE SIDEWALK/LOADING AREA (SEE DETAILS 2/C5 & 3/C5)

PROPOSED BITUMINOUS PAVEMENT (SEE DETAILS 1/C5 & 7/C5)

PROPOSED PARKING STALL COUNT (299 TOTAL)

- 1) ALL RADII TO BACK OF CURB
- 2) ALL DIMENSIONS TO THE FACE OF CURB UNLESS NOTED OTHERWISE
- 3) PAVEMENT STRIPING TO BE 4" WIDE WHITE PAINTED STRIPE. ACCESSIBLE ACCESS AISLE STRIPING SHALL BE 4" WIDE WHITE PAINTED STRIPE 18" ON CENTER AND AT 45 DEGREE ANGLES TO STALL.

1	INSTALL BITUMINOUS PAVEMENT. REFER TO DETAIL 1/C5.
2	INSTALL CONCRETE SIDEWALK. REFER TO DETAIL 2/C5. 1:20 MAX PROFILE SLOPE AND MAX CROSS SLOPE OF 1:50 FOR ALL SIDEWALKS.
3	INSTALL CONCRETE LOADING DOCK. REFER TO DETAIL 3/C5.
4	INSTALL ADA PARKING SIGN. REFER TO DETAIL 4/C5.
5	INSTALL STEEL BOLLARD. 6" DIA. CONCRETE FILLED. 48" BELOW GRADE AND 42" ABOVE GRADE. INSTALL STANDARD YELLOW IDEAL SHIELD OVER TOP OF BOLLARD.
6	INSTALL NEW B612 CONCRETE CURB AND GUTTER. REFER TO DETAIL 5/C5.
7	INSTALL NEW CONCRETE ADA RAMP. REFER TO DETAIL 6/C5.
8	REFER TO DETAIL SHEET C3 FOR WALL/PLANTER DETAIL.
9	REFER TO ARCHITECTURAL DRAWINGS FOR RAILING DETAIL.
10	INSTALL ISLAND WITH 15FT TOTAL DEPTH, 3FT BACK FROM 18FT AISLE LENGTH PER CITY STANDARDS.
11	CURB IS FLAT FOR ENTIRE WIDTH OF STALLS.
12	AREA OF EXISTING RIGHT OF WAY TO BE VACATED. SEPARATE DOCUMENT SUPPLIED TO CITY.
13	INSTALL (4) BIKE HOOPS (SEE DETAIL 5/C6)
14	DESIGNATED SNOW STORAGE LOCATION
15	CURB OPENING
16	PROPOSED LOCATION FOR PYLON SIGN.
17	INSTALL NON , RESIDENTIAL DRIVEWAY APPROACH

- 1) EXISTING IMPERVIOUS SURFACE AREA = 217,235 SQ. FT.
- 2) PROPOSED IMPERVIOUS SURFACE AREA = 205,500 SQ. FT.

I HEREBY CERTIFY THAT THIS PLAN, SPECIFICATION OR REPORT WAS PREPARED BY ME OR UNDER MY DIRECT SUPERVISION AND THAT I AM A DULY LICENSED PROFESSIONAL ENGINEER UNDER THE LAWS OF THE STATE OF MINNESOTA.

TODD A. ERICKSON, PE
40418
LICENSE NO.
03/26/2019
DATE:

DEVELOPER

HOM FURNITURE
10301 Woodcrest Drive NW
Coon Rapids, Minnesota 55433

HOM FURNITURE
7800 Dupont Avenue South
Bloomington, Minnesota

[illegible]

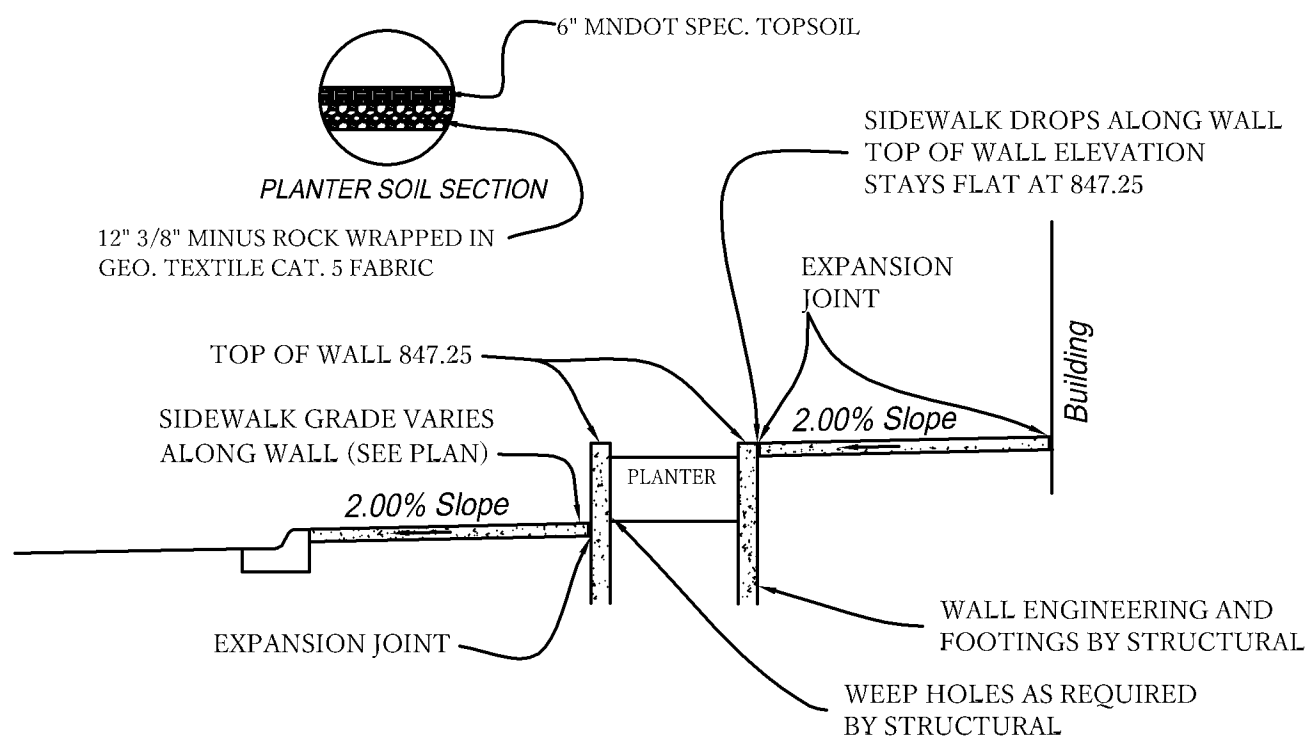
JOB NO. 15-123

SHEET TITLE

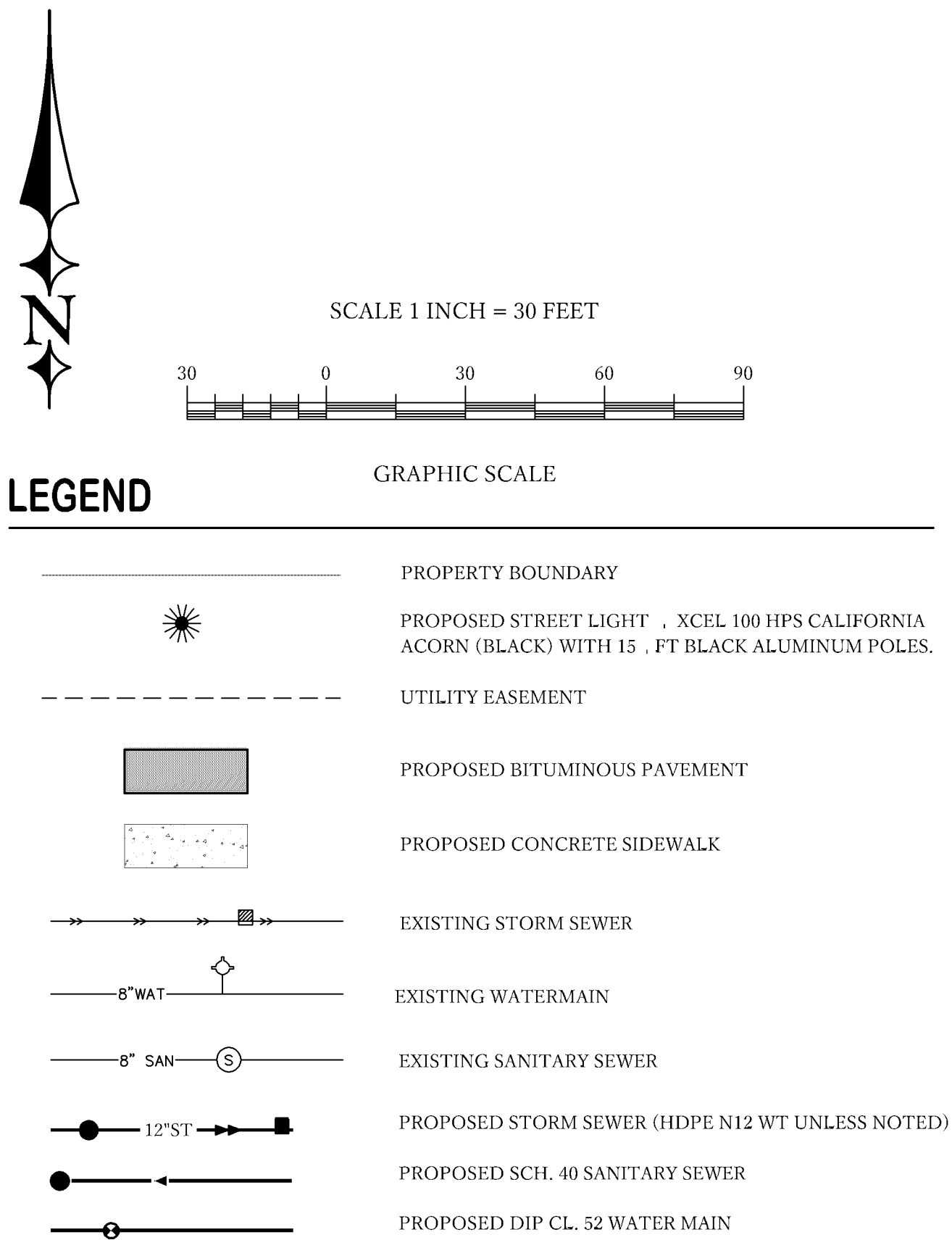
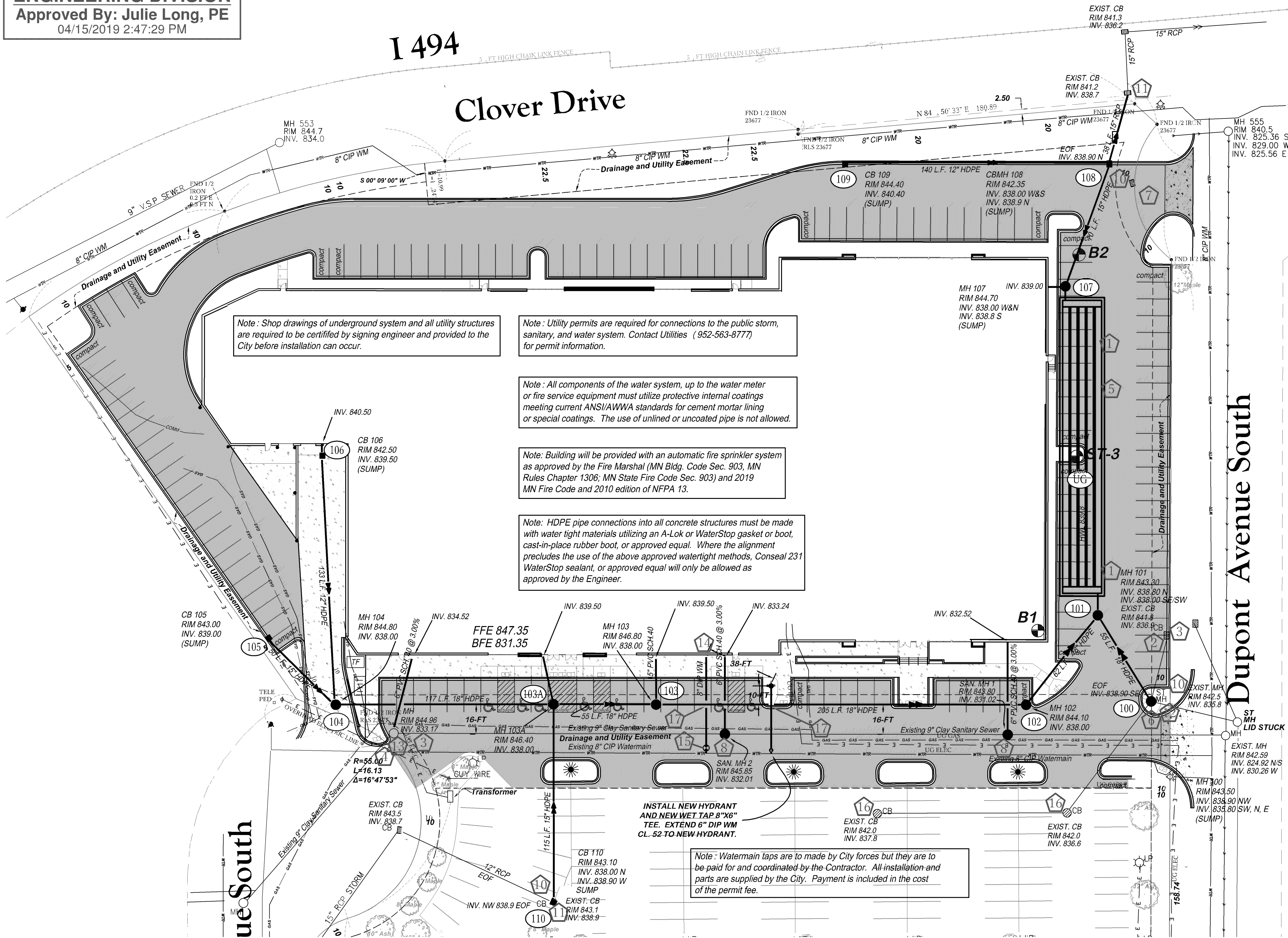
LAYOUT PLAN

SHEET NO.

C2



SECTION A , A



Keyed Notes

1. PROTECT AREA OF INFILTRATION PIPING SYSTEM. KEEP CONSTRUCTION TRAFFIC FREE FROM AREA.
2. ADJUST EXISTING RIM OF CATCH BASIN, REPLACE EXISTING RINGS WITH HDPE RINGS.
3. ADJUST EXISTING RIM OF MANHOLE, REPLACE EXISTING RINGS AND INSTALL INFRASHIELD AROUND RINGS.
4. CITY TO INSTALL MECHANICAL PLUG IN END OF EXISTING SEWER LINE ENTERING MANHOLE. HOM TO MAINTAIN EXISTING SEWER LINE AS PRIVATE SERVICE.
5. CONTRACTOR SHALL INSTALL (5) ROWS OF 42" DIAMETER PERFORATED HDPE PIPING OVER 18" OF 1, 1/2" ROCK PER DETAIL. REFER TO DETAIL 9/C5.
6. CONSTRUCT NEW 72" DIA. MANHOLE OVER EXISTING STORM SEWER, SEAL ALL EXISTING CONNECTIONS WITH CONCRETE.
7. REMOVE EXISTING CATCH BASIN AND BULK HEAD EXISTING PIPE WITH CONCRETE.
8. CONSTRUCT NEW SANITARY MANHOLE OVER EXISTING SANITARY SEWER VERIFY DEPTH OF EXISTING MAIN.
9. INSTALL NEW 8" DIP WM GATE VALVE ON EXISTING 8" WATER MAIN LINE (VERIFY LOCATION OF MAIN)
10. EXISTING STRUCTURES PROVIDE OUTFLOW FOR SYSTEM DURING LARGE STORM EVENTS
11. CONNECT TO EXISTING STORM STRUCTURE
12. CONNECT TO EXISTING STORM SEWER PIPES
13. CORE DRILL NEW CONNECTION TO EXISTING MH (SEAL CONNECTION)
14. INSTALL FIRE CONNECTION PER CITY OF BLOOMINGTON REQUIREMENTS. WATER METER IS REQUIRED TO BE PLACED WITHIN 10FT OF EXTERIOR WALL.
15. INSTALL 8" G.V. & BOX ON NEW SERVICE/FIRE LINE FOR BUILDING, WET TAP NEW 8"x8" TEE AND GATE VALVE ASSEMBLY. TAPS SHALL BE DONE BY CITY STAFF.
16. REMOVE AND REPLACE EXISTING RINGS WITH HDPE RINGS AND REINSTALL CASTING. MAKE BIT. REPAIRS AS NECESSARY.
17. OFFSET WATER MAIN MIN. 18" BELOW STORM SEWER AND INSULATE CROSSING PER CITY REQUIREMENTS.

Notes

- 1) WATERMAIN: 8" DIP CL 52, ALL MECHANICAL JOINTS. 8 . FT TO 10 . FT BURY DEPTH, WITH 8 MIL. POLY WRAP.
- 2) SANITARY SEWER: 8" PVC SCH. 40
- 3) STORM SEWER: SEE SCHEDULE FOR PIPE TYPE AND SIZES
- 4) PRESSURE TEST SANITARY SEWER PER CITY REQUIREMENTS
- 5) HYDROTEST WATERMAIN PER CITY REQUIREMENTS.
- 6) BACTERIA TEST WATER SERVICE PER CITY REQUIREMENTS.
- 7) COMBINATION FIRE AND DOMESTIC SERVICES MUST TERMINATE WITH A THREAD ON FLANGE OR A MJ TO FLANGE ADAPTER.
- 8) UTILITY AND MECHANICAL CONTRACTORS SHALL COORDINATE INSTALLATION OF WATER SERVICE PIPES, FITTINGS, AND VALVES (UP TO METERS AND/OR FIRE SERVICE EQUIPMENT) AND SEWER SERVICES ALL THE WAY INTO THE BUILDING TO ACCOMMODATE CITY INSPECTION AND TESTING.

NOTE:

- 1) STORM LINE FROM 104 TO 102 IS WATER QUALITY/ PRE TREATMENT SYSTEM WHICH WILL REQUIRE ROUTINE INSPECTION AND MAINTENANCE ACCORDING TO THE WATERSHED MAINTENANCE AGREEMENT.
- 2) IN ADDITION TO THE ABOVE SYSTEM CB'S 100, 101, 105-110 ARE DESIGNED AS SUMP CATCH BASINS OR MANHOLES FOR ADDITIONAL WATER QUALITY AND WILL ALSO REQUIRE ROUTINE INSPECTION AND MAINTENANCE ACCORDING TO THE WATERSHED MAINTENANCE AGREEMENT.
- 3) 106 * - CB STRUCTURE 106, EXTEND 12" OUTLET PIPE INTO CB AND INSTALL 90° BEND TO 1-FT BELOW INVERT OF OUTLET PIPE TO PROVIDE OIL/DEBRIS SKIMMING.
- 4) ALL STORM PIPE IS HPDE N12 WT, UG = 42" DIA. PERFORATED PIPE
- 5) EOF OULET PIPE FROM CBMH 109 TO EXISTING = 38 L.F. 15" RCP @ 0.53%

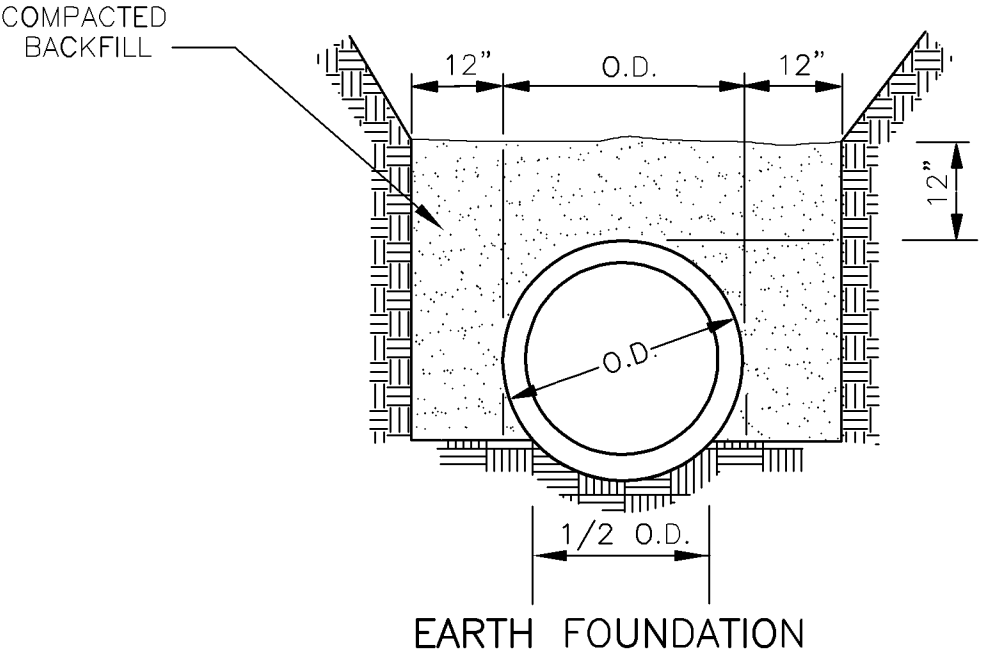
Structure	Rim	Invert In	Invert Out	EOF Out	Invert Down	Pipe Size	Pipe Length	Pipe Slope	Sump Invert	Total Build	Dia.	Casting	Notes
110	843.10		838.00	838.90	838.00	15	115	0.00%	834.00	9.10	48"	R-3067V	EOF
109	844.40		840.40		838.00	12	140	1.71%	836.40	8.00	48"	R-3067V	
108	842.35	838.00	838.00	838.90	838.00	15	75	0.00%	834.00	8.00	48"	R-3067V	EOF
107	844.70	838.00	838.80		838.00	15	6	13.33%	834.00	10.70	48"	R-1761	
106 *	842.50		839.50		838.00	12	133	1.13%	835.50	7.00	48"	R-2500	Oil Separator
105	843.00		839.00		838.00	15	50	2.00%	835.00	8.00	48"	R-3067V	Water Quality
104	843.00	838.00	838.00		838.00	18	117	0.00%		5.00	48"	R-1761	Water Quality
103A	846.40	838.00	838.00		838.00	18	55	0.00%		8.60	48"	R-1761	Water Quality
103	846.80	838.00	838.00		838.00	18	205	0.00%		9.05	48"	R-1761	Water Quality
102	844.10	838.00	838.00		838.00	18	62	0.00%		7.00	48"	R-1761	
101	843.50	838.00	838.80		838.00	18	12	6.67%	834.00	9.50	72"	R-1761	
100	843.30	835.80	835.80	838.90	838.00	18	55	1.64%	831.80	11.50	72"	R-1761	EOF
UG		835.00	835.00			42	(5) 150	0.00%					Volume Control



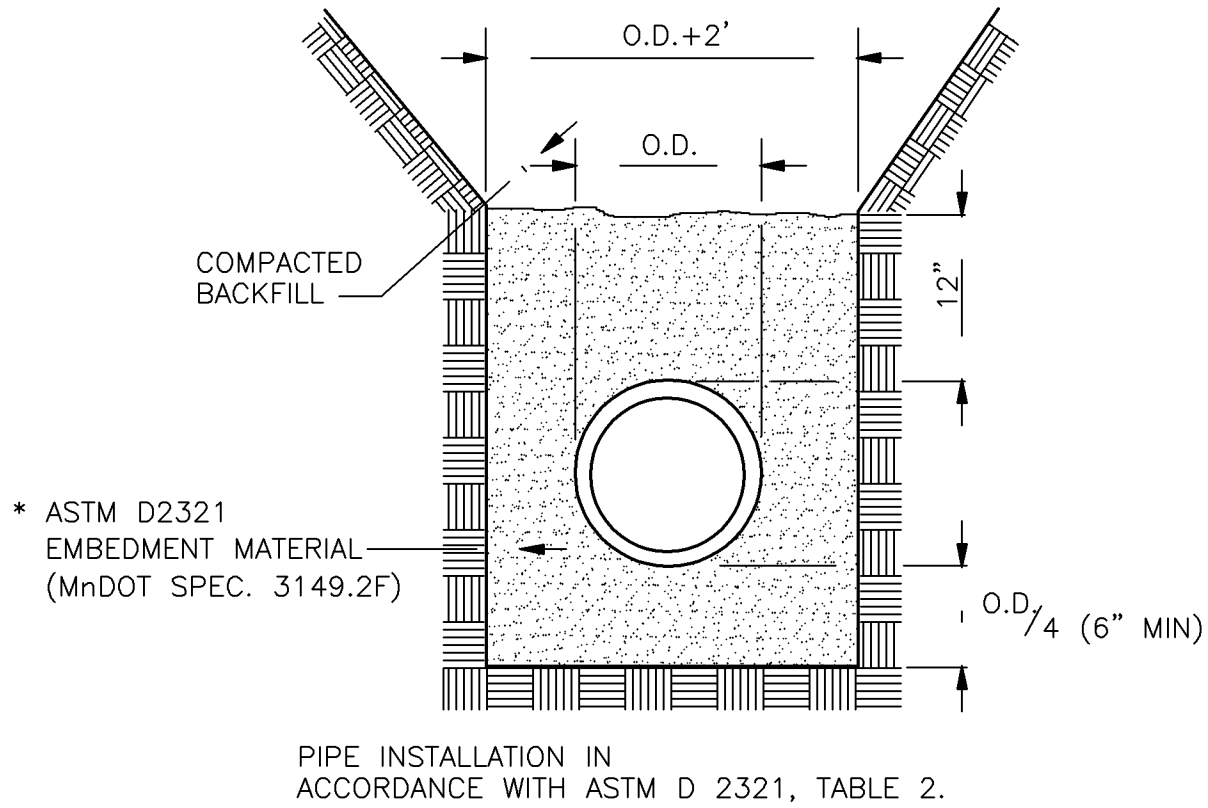
EXPANSION JOINTS:

- 1) WHERE WALK BUTTS ANY FIXED OBJECT SUCH AS WALLS, CURBS, MANHOLES, ETC.
- 2) 45' ON CENTER MAXIMUM OR AS SHOWN ON PLANS.
- 3) JOINT SEALER SHALL MEET ASTM D-412, GRAY, SELF LEVELING, EPOXY, AS WITH "QUICKJOINT 300" OR EQUAL.

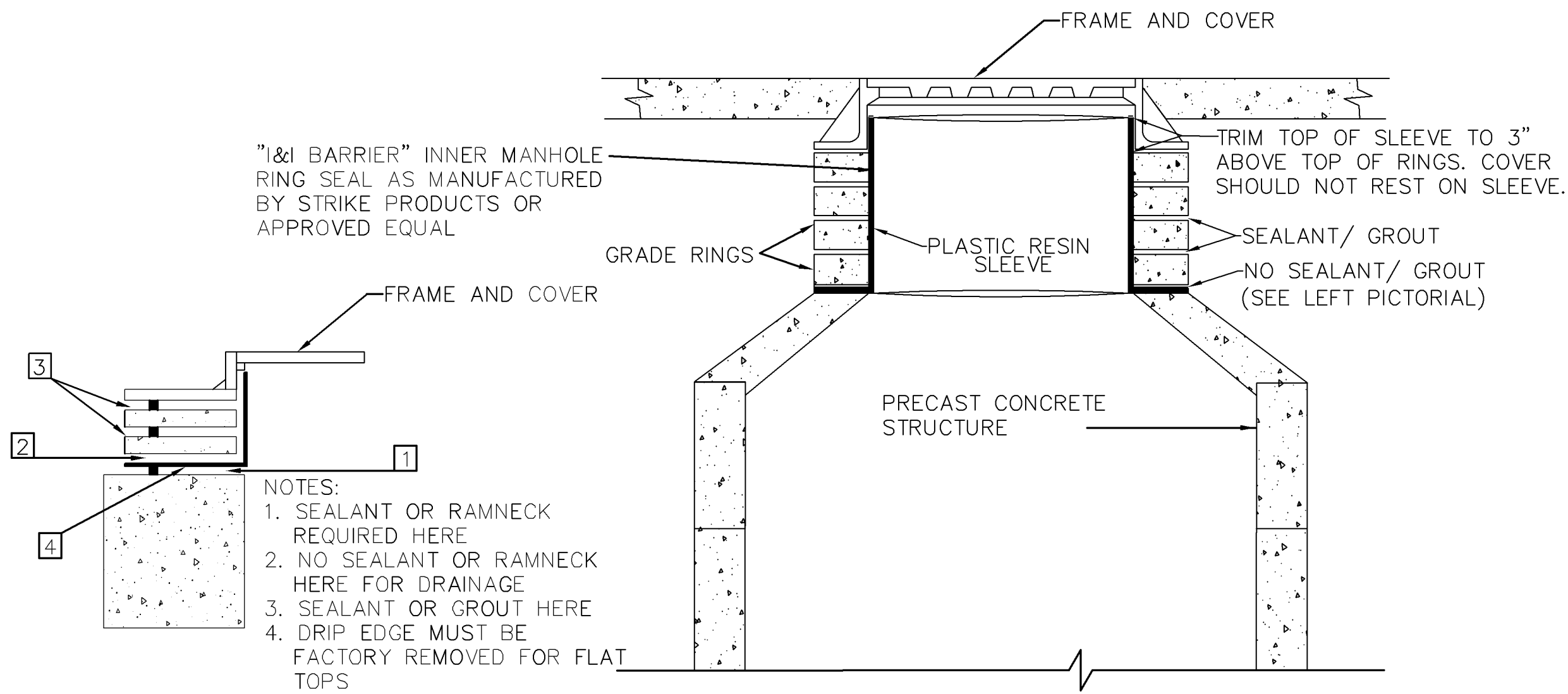




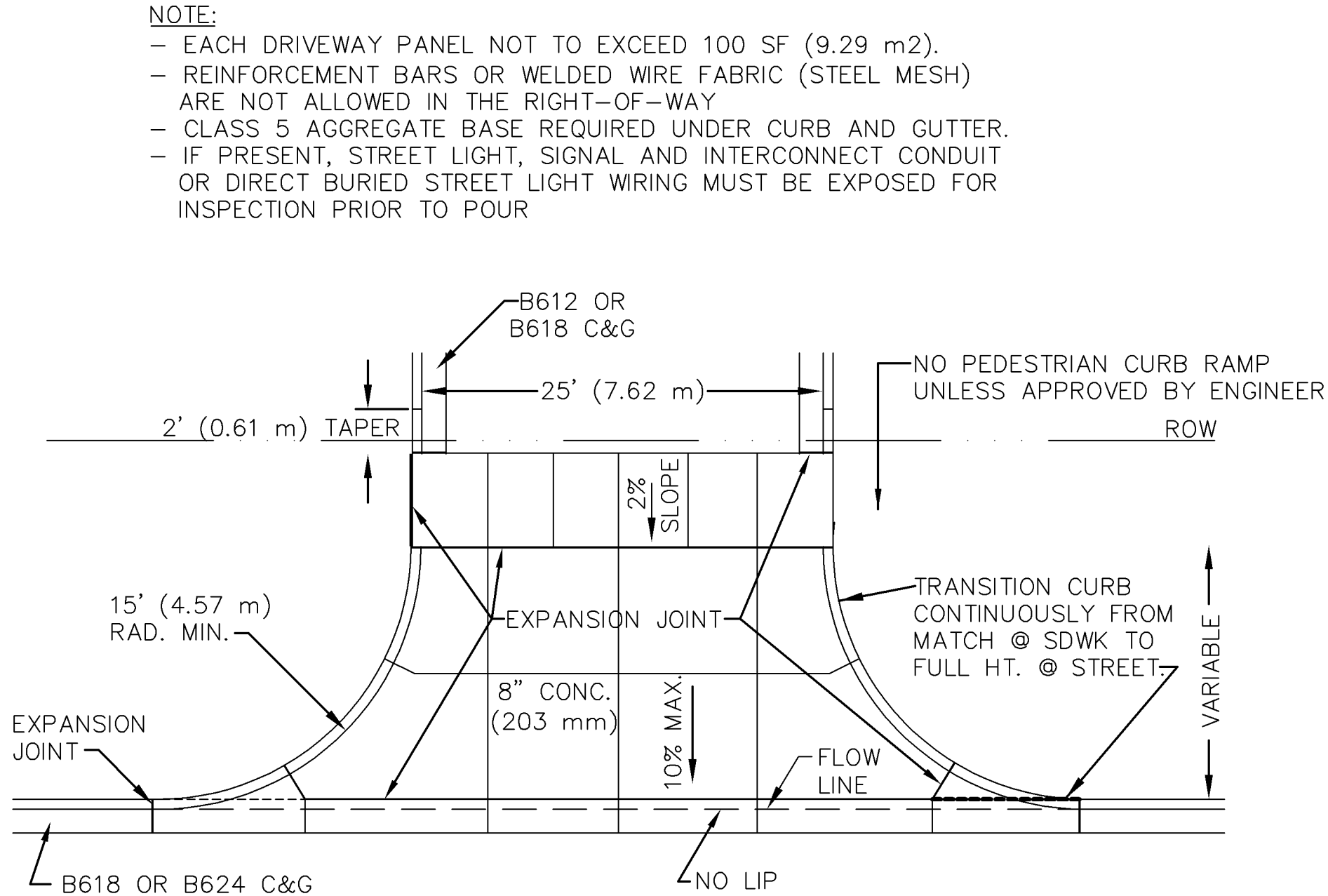
1
C6
PIPE FOUNDATION DETAILS
NO SCALE



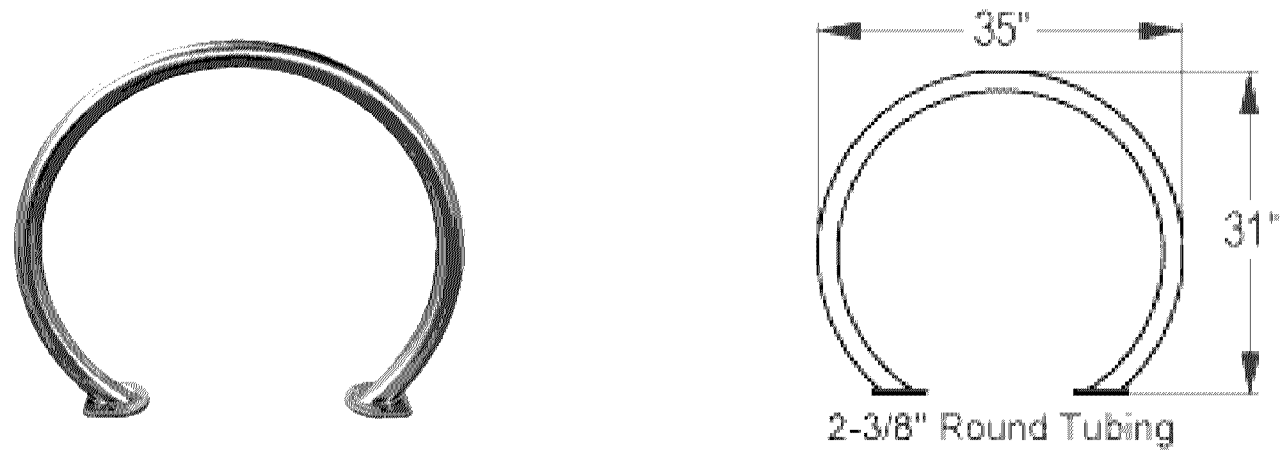
2
C6
GRANULAR MATERIAL BEDDING METHOD
(FOR PVC SANITARY SEWER PIPE)
NO SCALE



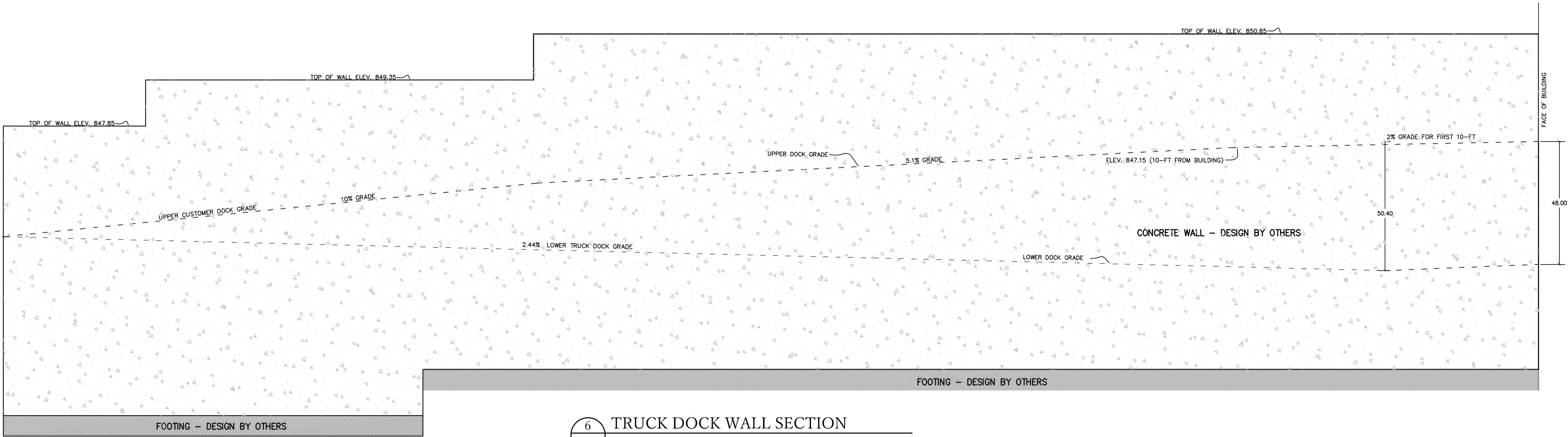
3
C6
INTERNAL CHIMNEY SEAL
Internal Chimney Seal.dwg 1/2019



4
C6
NONRESIDENTIAL DRIVEWAY APPROACH
NO SCALE



5
C6
BIKE HOOP DETAIL
Model CBBR-2CR-SS Belson Outdoors (Surface Mount)
(Stainless Steel) (4 HOOPS TO BE INSTALLED)



6
C6
TRUCK DOCK WALL SECTION
STRUCTURAL ENGINEERING BY OTHERS (DIMENSIONS IN INCHES)

DRAWING PHASE:
OWNER REVIEW
AGENCY REVIEW
BID DOCUMENT
FOR CONSTRUCTION
AS-BUILT DOCUMENT

I HEREBY CERTIFY THAT THIS PLAN, SPECIFICATION OR REPORT WAS PREPARED BY ME OR UNDER MY DIRECT SUPERVISION AND THAT I AM A DULY LICENSED PROFESSIONAL ENGINEER UNDER THE LAWS OF THE STATE OF MINNESOTA.

TODD A. ERICKSON, PE
40418
LICENSE NO.
03/26/2019
DATE:

OWNER/DEVELOPER

HOM FURNITURE
10301 Woodcrest Drive NW
Coon Rapids, Minnesota 55433

PROJECT TITLE

HOM FURNITURE
7800 Dupont Avenue South
Bloomington, Minnesota

DATE

REVISION DESCRIPTION

NO.

JOB NO. 15-123

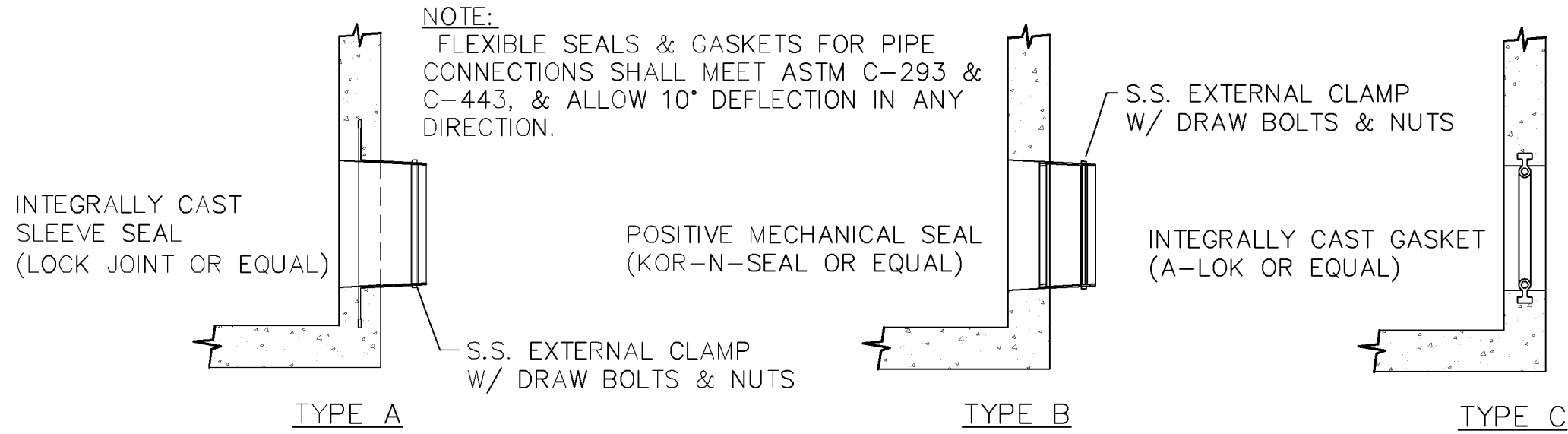
SHEET TITLE

DETAILS

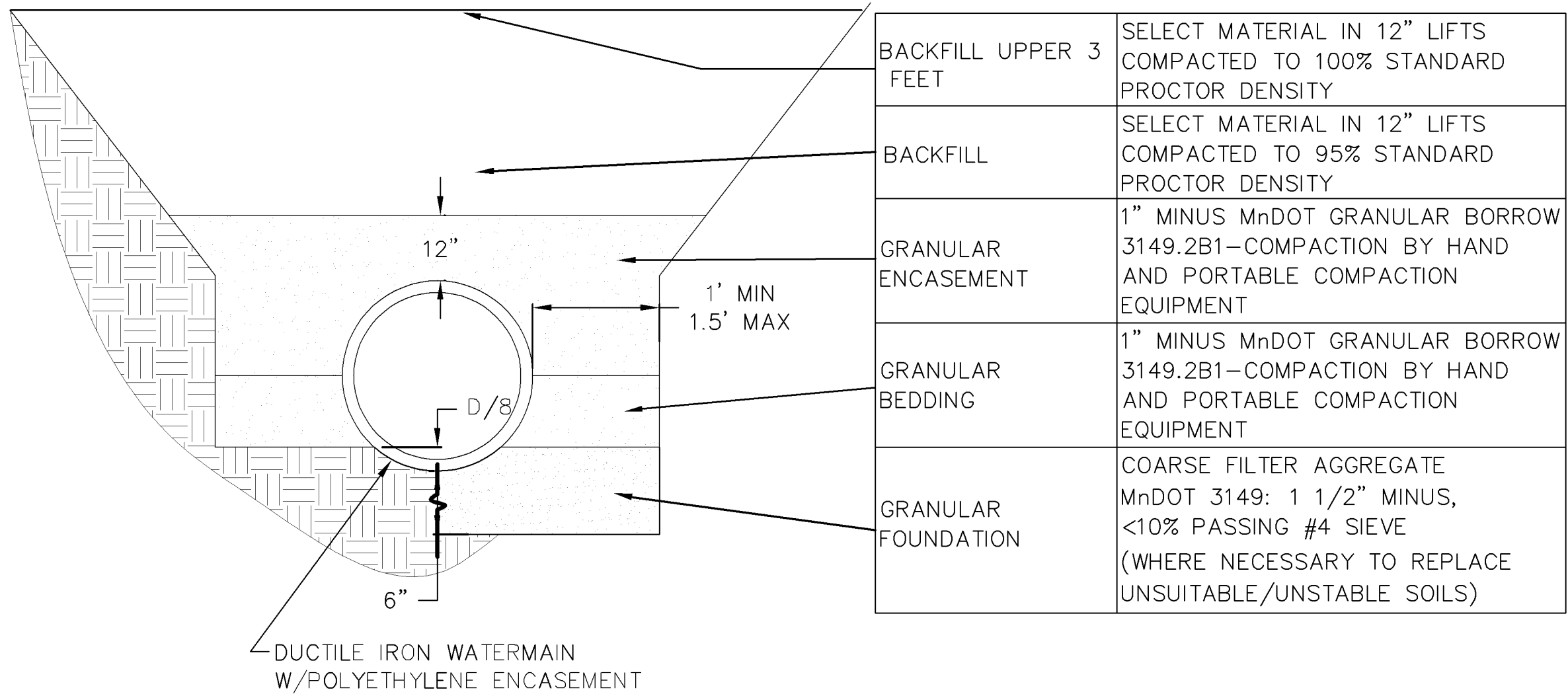
SHEET NO.

C6

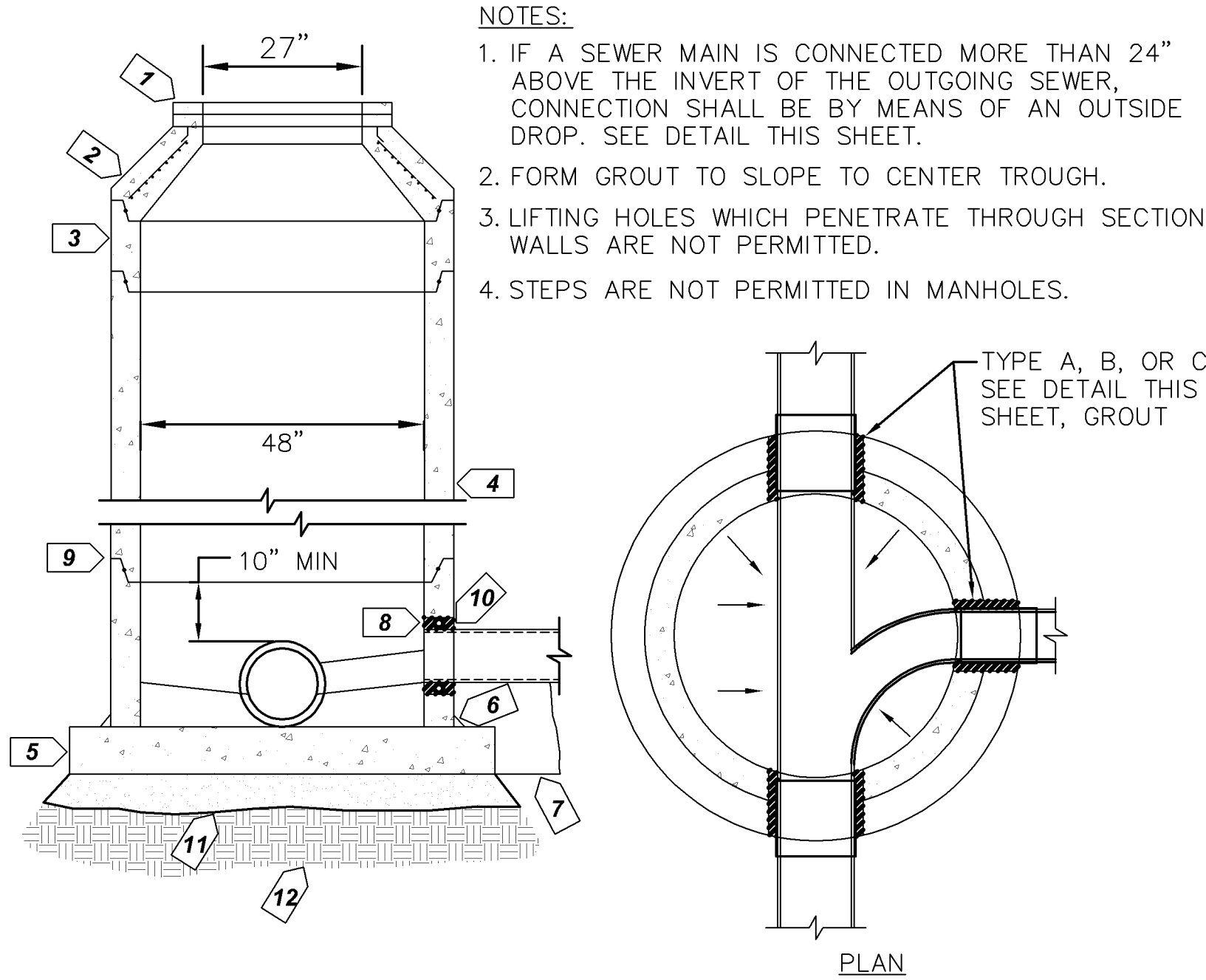
SHEET 6 OF 7



WATER TIGHT PIPE CONNECTIONS
MH_PIPE_CON.dwg 4/2009

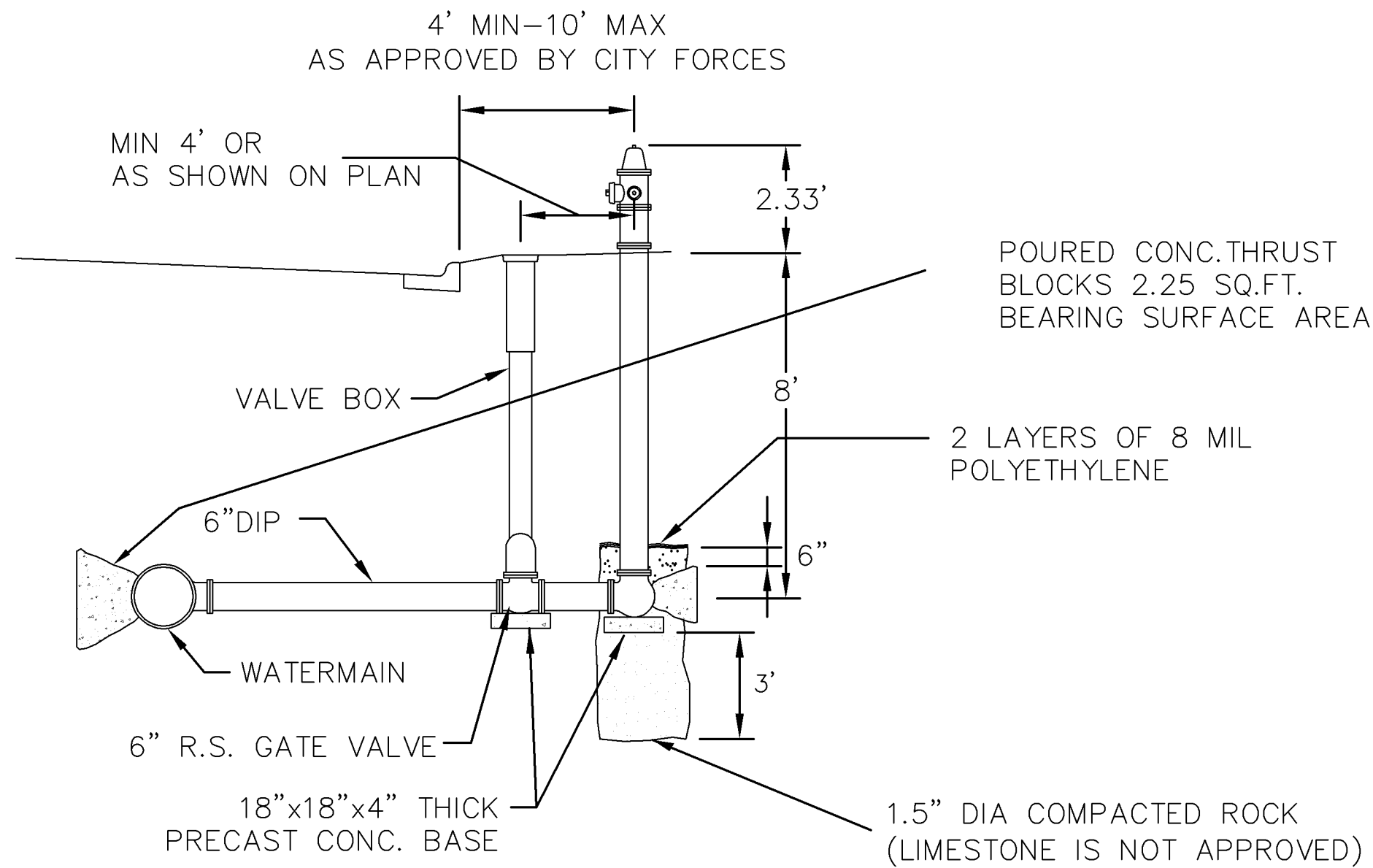


TYPICAL WATER MAIN INSTALLATION DETAIL
WATERMAIN_INST.DWG 11/2012



STD. SANITARY SEWER MH
STD_SS_MH.dwg 1/2013

- HYDRANT TO BE:
 - o WATEROUS PACER CLASSIC.
 - o MUELLER SUPERCENTURION 250 MODEL A-423.
 - o OR APPROVED EQUAL.
- EQUIP WITH THREE HOSE NOZZLES/CONNECTIONS AS FOLLOWS:
 - o ONE - FACTORY INSTALLED 5 INCH STORZ PUMPER NOZZLE/CONNECTOR, INCLUDING A MANUFACTURER SUPPLIED AND INSTALLED ANODIZED ALUMINUM NOZZLE CAP WITH A 1.5 INCH PENTAGON NUT AND NO ROCKER LUG.
 - o TWO - 2.5 INCH HOSE NOZZLES/CONNECTIONS (WITH NATIONAL STANDARD THREADS) AND STANDARD NOZZLE CAPS WITH 1.5 INCH PENTAGON NUTS, AND NO ROCKER LUGS.
- USE SS NUTS AND BOLTS AS APPROVED BY THE ENGINEER.
- ALL EXPOSED WATERMAIN SHALL BE WRAPPED WITH POLYETHYLENE IN ACCORDANCE WITH AWWA C-105.
- BARREL TO BE BRIGHT RED.
- ALL VALVES TO OPEN COUNTER-CLOCKWISE.
- SEE TYPICAL VALVE INSTALLATION DETAIL FOR VALVE DETAILS.
- WATEROUS PACER CLASSIC HYDRANTS SHALL INCLUDE INSTALLATION OF THE MANUFACTURERS MOST CURRENT ANTI-CHATTER BRASS UPPER VALVE WASHER.



TYPICAL HYDRANT INSTALLATION

Hyd_instll.dwg

1/2019

DRAWING PHASE:	
	OWNER REVIEW
	AGENCY REVIEW
	BID DOCUMENT
✓	FOR CONSTRUCTION
	AS-BUILT DOCUMENT

I HEREBY CERTIFY THAT THIS PLAN, SPECIFICATION OR REPORT WAS PREPARED BY ME OR UNDER MY DIRECT SUPERVISION AND THAT I AM A DULY LICENSED PROFESSIONAL ENGINEER UNDER THE LAWS OF THE STATE OF MINNESOTA.

TODD A. ERICKSON, PE
40418

LICENSE NO.
03/26/2019

DATE:

OWNER/DEVELOPER

HOM FURNITURE
10301 Woodcrest Drive NW
Coon Rapids, Minnesota 55433

PROJECT TITLE

HOM FURNITURE
7800 Dupont Avenue South
Bloomington, Minnesota

DATE

REVISION DESCRIPTION

NO.

JOB NO. 15-123

SHEET TITLE

DETAILS

SHEET NO.

C7

SHEET 7 OF 7