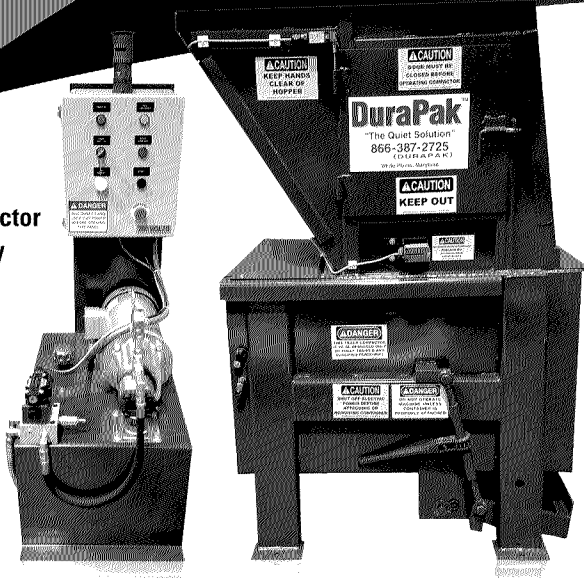


DuraPak™

"The Quiet Solution"
DP500-HD

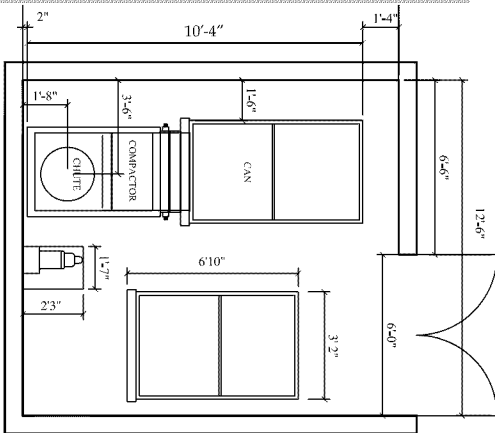
DuraPak™500-HD Compactor delivers exceptional quality and power while running more quietly than similar models. Designed for high-rise applications, DuraPak™ machines are ideal choices for hotels, hospitals, apartment and office buildings. For use with compaction cans.



STANDARD FEATURES

- Remote Power Unit
- "UL" Labeled Control Panel
- 208/240/480 Volt 5HP Motor
- Photo Electric Eye With Time Delay
- Automatic Cycle
- Mushroom Stop Button
- On/Off Key Switch
- 2 Interlocked Side Access Doors with Automatic Shut-Off
- Night Shut Down
- Programmable Logic Control (PLC)
- ANSI Compliant
- Ratchet Turnbuckle Hook-Up
- Soft Shift Single Solenoid Valve
- Replaceable Low Friction, Noise Reducing Wear Pads
- On Light
- Container Full Light
- Oil Pressure Gauge
- Excessive Run Timer
- Maintenance Reminder Indicator
- 208/240/480V Control Panel
- Access Door on Both Sides
- Adjustable/Interchangeable Left/Right Side Container Hookup

TYPICAL COMPACTOR ROOM



OPTIONS

- 110 V Single Phase Motor
- Rear or Front Loading Containers
- Odor Control System
- Hopper Sound Deadening Package
- Single Side Container Hook Up

HYDRAULICS

No of Cylinders	2
Bore/Rod	2.5"/1.375
Cylinder Stroke	20"
Pump	6.0 GPM
Valve	Single Solenoid Soft Shift
Oil Reservoir	14 GAL
Normal Cycle Time	Adjustable 13.7-60 Sec
Normal Pressure	Adjustable 1350-1650 PSI
Max. Pressure	1950 PSI
Normal Force	13,900 LBS / 23.2 PSI

RAM

Top Plates	1/4"
Sides	1/4"
Floor	3/8"
Face Plate	3/8"
Steel Wiper	3" x 1/4"
Replaceable Wear Pads	YES
Ram Penetration	4.25"

COMPACTOR FRAME

WASTEC Rated Size	0.34
Hopper Top Opening	38" x 30"
Capacity Per Hour	77 cu. Yards
Floor (1/4" + 1/4" Wear Plate)	1/2"
Breaker Bar	4" x 3" x 1/2"
Side Plates	1/4"
Hopper Sides & Front	11 GA.
Hopper Impact Plate	1/4"
Ratchet Turnbuckle Cap.	38,000 lbs
Weight w/o Power Unit	1600 lbs
Compaction Chamber	30" x 21" x 26.5"
Machine Dimensions	46"L x 39"W x 65"H

ELECTRICAL

Motor (TEFC)*	5HP
"UL" Labeled	YES
Power	208/240/480 3 Phase
NEMA Type Fuse	YES
Photo Electric Eye	YES

*Totally Enclosed Fan Cooled

33 Industrial Park Drive, Waldorf, MD 20602 | 800.88-CHUTE | 240.448.5000 | FAX 301.753.4108 | www.durapak.org | email: info@chutes.com

The DuraPak compactor is subject to our continuous improvement program, and we reserve the right to implement changes and improvements to the products shown herein without prior notice.
©2018 CHUTES International Manufacturing, LLC

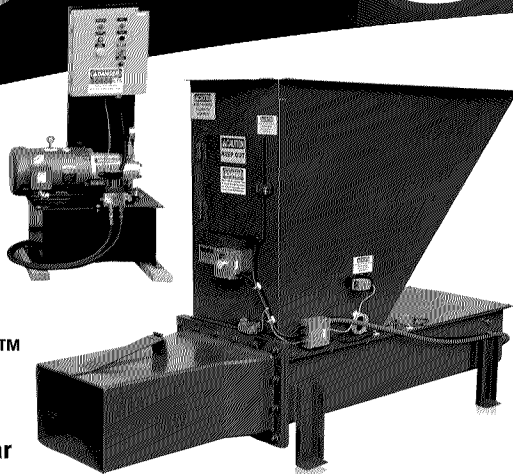
Loaded With Extras At Standard Prices!
www.chutes.com | 1.800.882.4883

DuraPak™
500-HD

DuraBagger™

DB-100

DuraBagger™DB-100 Compactor delivers exceptional quality and power while running more quietly than similar models. Designed for high-rise applications, DuraBagger™ machines are ideal choices for hotels, hospitals, apartment and office buildings. For use with tubular compactor bags.



HYDRAULICS

No of Cylinders	1
Bore/Rod	4"/2"
Cylinder Stroke	20"
Pump	3.65 GPM
Valve	Single Solenoid Soft Shift
Oil Reservoir	12 GAL
Normal Cycle Time	43 SEC
Normal Pressure	2300 PSI
Max. Pressure	2900 PSI
Normal Force	36,440 LBS

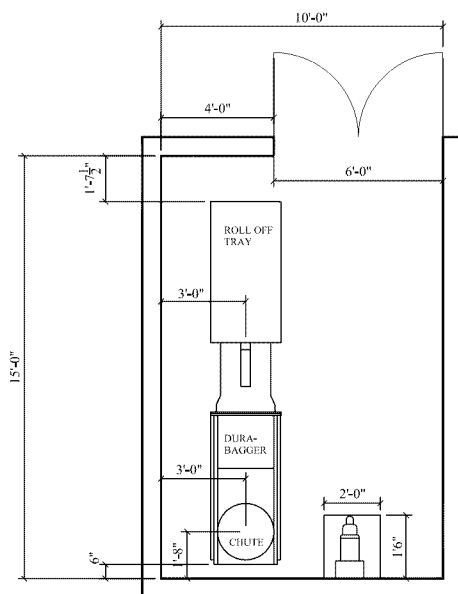
STANDARD FEATURES

- Remote Power Unit
- "UL" Listed Electrical Components
- Photo Electric Eye With Time Delay
- Automatic Cycle
- Mushroom Stop Button
- On/Off Key Switch
- Interlocked Front Access Door with Automatic Shut-Off
- Night Shut Down
- Programmable Logic Control (PLC)
- Soft Shift Single Solenoid Valve
- On Light
- Full Bag Shut Off Switch
- Oil Pressure Gauge
- Excessive Run Timer
- RAM Retract Push Button
- Bag Hold Down Arm

RAM

Top Plates	1/4"
Sides	1/4"
Floor (1/4" + 1/4" Plate)	1/2"
Face Plate	1"
Replaceable Shear Teeth	YES

TYPICAL BAGGER ROOM



OPTIONS

- 110 V Single Phase Motor
- 460/480V 3PH
- 7 1/2 HP Motor
- Access Door on Both Sides
- 38.5" Tubular Compactor Bags
- Odor Control System
- Hopper Sound Deadening Package
- 5'-0" or 10'-0" Roll Off Tray
- Multi-Sausage Bag Kit w/Wire Ties
- 38" Single Bags

COMPACTOR FRAME

WASTEC Rated Size	0.15
Clear Top Opening	20 3/4" x 24"
Capacity Per Hour	12.3 CU YDS
Floor (1/4" + 1/4" Wear Plate)	5/8"
Breaker Bar	4" x 3" x 1/2"
Side Plates	3/8"
Hopper Sides & Front	11 GA.
Hopper Impact Plate	1/4"
Weight w/o Power Unit	1600 lbs
Compaction Chamber	24" x 24" x 12"
Machine Dimensions	34"W x 94"L x 65"H

ELECTRICAL

Motor (TEFC)	5HP
"UL" Labeled	YES
Power	208/240/480 3 Phase
NEMA Type Fuse	YES
Photo Electric Eye	YES

33 Industrial Park Drive, Waldorf, MD 20602 | 800.88-CHUTE | 240.448.5000 | FAX 301.753.4108 | www.durapak.org | email: info@chutes.com

The DuraBagger compactor is subject to our continuous improvement program, and we reserve the right to implement changes and improvements to the products shown herein without prior notice.
©2018 CHUTES International Manufacturing, LLC

Loaded With Extras At Standard Prices!
www.chutes.com | 1.800.882.4883

DuraBagger™
DB-100