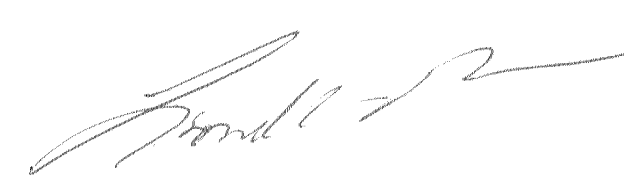
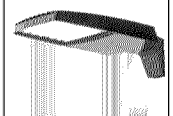
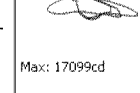
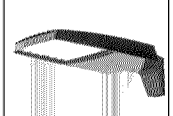



LIGHTING PLAN APPROVED

No changes in fixture or location without a revised plan review.

10/07/2019
lpeace

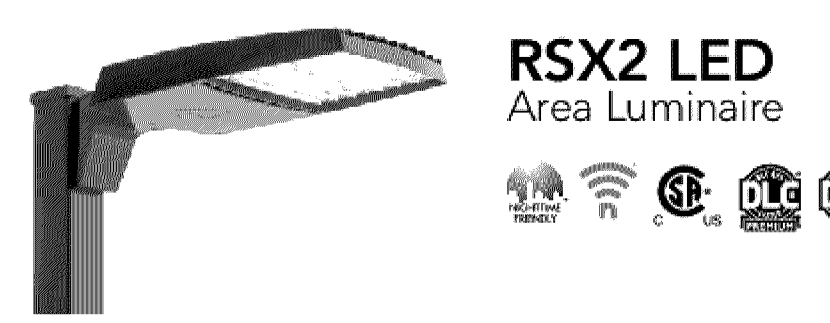
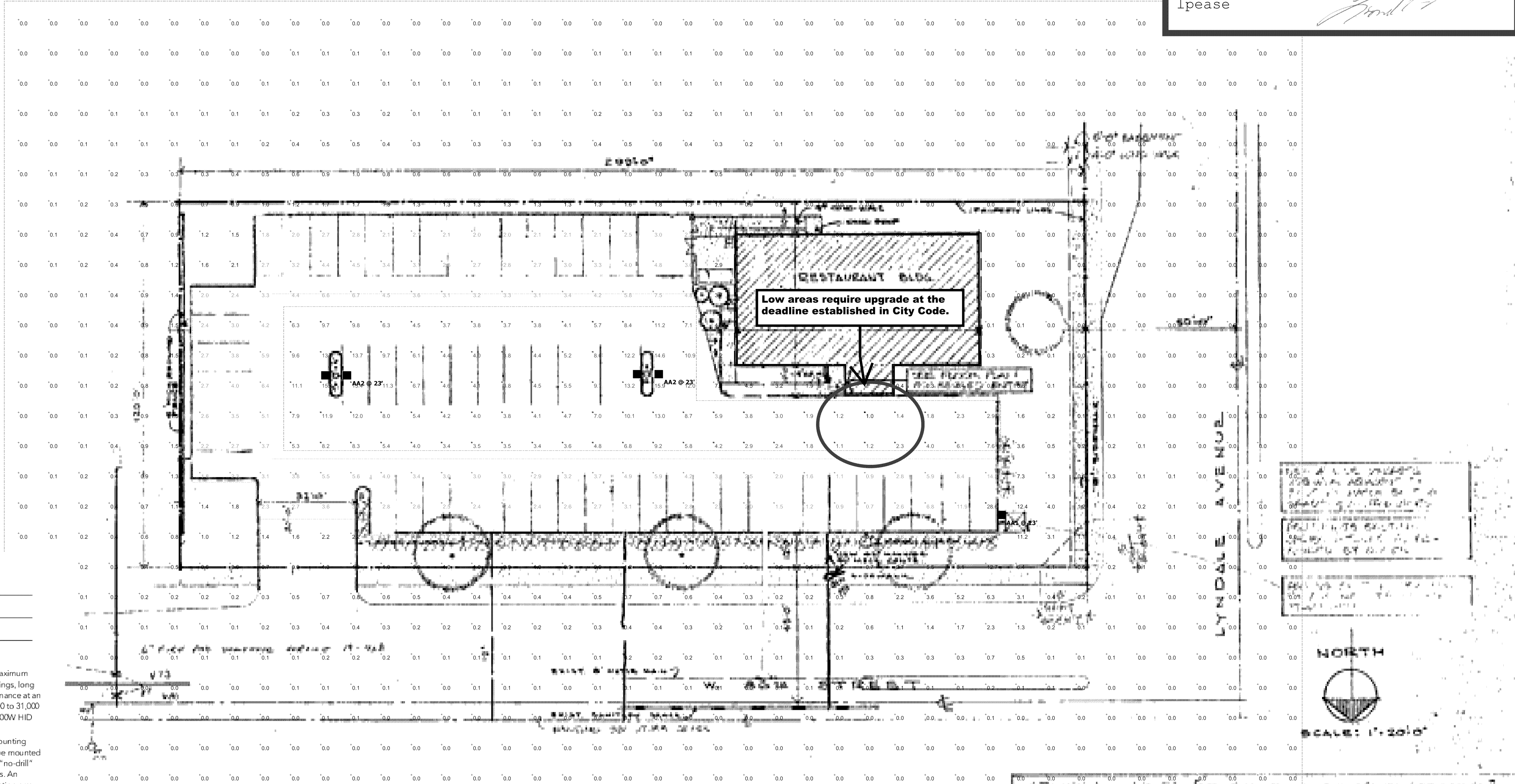


Symbol	Label	Image	Quantity	Manufacturer	Catalog Number	Description	Lamp	Number Lamps	Filename	Lumens Per Lamp	Light Loss Factor	Wattage	Efficiency	Distribution	Polar Plot	Notes
AA1			1	Lithonia Lighting	RSX2 LED P5 40K R4	RSX Area Fixture Size 2 P5 Lumen Package 4000K CCT Type R4 Distribution		1	RSX2_LED_P5_40K_R4.ies	28993	1	213.48	100%	TYPE IV, SHORT, BUG RATING: B3 - U0 - G4		
AA2			2	Lithonia Lighting	RSX2 LED P5 40K R4	RSX Area Fixture Size 2 P5 Lumen Package 4000K CCT Type R4 Distribution		1	RSX2_LED_P5_40K_R4.ies	28993	1	426.96	100%	TYPE IV, SHORT, BUG RATING: B3 - U0 - G4		

Statistics

Description	Symbol	Avg	Max	Min	Max/Min	Avg/Min
1FC Area		3.6 fc	28.6 fc	0.6 fc	47.7:1	6.0:1
2FC Area		6.3 fc	15.9 fc	1.0 fc	15.9:1	6.3:1
Total Area @ Grade		1.3 fc	28.6 fc	0.0 fc	N/A	N/A

- Note**
- Davis and Associates, Inc does not assume responsibility for the interpretation of this calculation, or compliance to local or state lighting codes and ordinances.
 - All readings/calculations are shown @ grade.
 - Fixtures are 23' 0" A.F.G.



RSX2 LED Area Luminaire

Color Number	
Beam	
Temp	

Introduction

The new RSX LED Area family delivers maximum value by providing significant energy savings, long life and outstanding photometric performance at an affordable price. The RSX2 delivers 11,000 to 31,000 lumens allowing it to replace 250W to 1000W HID luminaires.

The RSX features an integral universal mounting mechanism that allows the luminaire to be mounted on most existing drill hole patterns. This "no-drill" solution provides significant labor savings. An easy-access door on the bottom of mounting arm allows for wiring without opening the electrical compartment. A mast arm adaptor and an adjustable integral slip-fitter are also available.

Specifications

EPA (ft²/ft²)	0.69 ft² (0.06 m²)
Length:	29.3" (74.4 cm)
Width:	13.4" (34.0 cm)
Height:	3.0" (7.6 cm) Main Body 7.2" (18.3 cm) Arm
Weight (max):	33.0 lbs (15.0 kg)

Ordering Information EXAMPLE: RSX2 LED P6 40K R3 MVOLT SPA DDBX2

Series	Performance Package	Color Temperature	Distribution	Voltage	Mounting
RSX2LED	P1	30K 3000K	R3 Spot 3/1600	MVOLT 120V-277V	SPA Square pre-mounting Arm, 30" for 14000 lum, 37.5" for 21,400 lum
	P2	40K 4000K	R4 Spot 3/1600	120V-277V	RPA Round pre-mounting (11.2" max pole dia for 14000 lum, 14" for 21,400 lum)
	P3	50K 5000K	R5 Spot 3/1600	120V-277V	MA Mast arm adaptor (fits 2.18" Ø horizontal arm)
	P4		R55 Spot 3/1600	208V-240V	IS Adjustable slip-fitter (fits 2.18" Ø arm)
	P5		ARR Asymmetric foot box	240V 480V	WSA Wall bracket
	P6				

Options	Flash
Shipped Installed	Shipped Installed
IS Intra-side shield	DDBX2 Dark Bronze
PE Precision external shield	DDBX3 Black
PEK Precision external shield, adjustable	DDBX4 Natural Aluminum
PB7 Seven-way beam-tilt/adjustable only for ceiling	DDBX5 White
BS Beam shield	DDBX6 Bronze Satin
CS4 Control only 14" x 14" (30" x 30")	DDBX7 Bronze Satin Aluminum
SF Single face (50, 27, 147)	DDBX8 Bronze White
DF Double face (200, 240, 480)	
SP200V 200V Single pack (100V standard)	
140 140V dual pack (100V standard)	
240V 240V dual pack (100V standard)	
240V 240V dual pack (100V standard)	

BRIDGEMAN RESTAURANT ALTERATIONS TO SOMEBODY'S HOUSE RESTAURANT

WEST 1/2 CORNER OF LYNDALE AVENUE & WYOMING AVENUE, BLOOMINGTON, MINNESOTA

NEUTRAIR DRANE & BERNS ARCHITECTS

SITE PLAN 1" = 20' 0"

SOMEBODY'S HOUSE RESTAURANT
801 W. 4th Street, Bloomington, MN

CONSULTANT: MAX F. HOEHNE & ASSOCIATES
800 OTTAWA AVE. WEST PALM BEACH, FLORIDA

DATE: 8-18-19 SHEET: C-1 OF 1

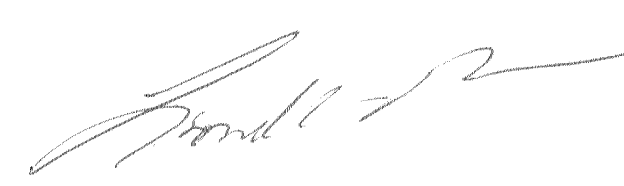
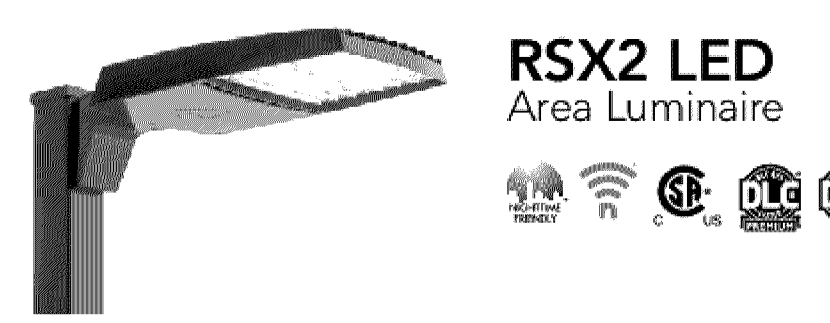
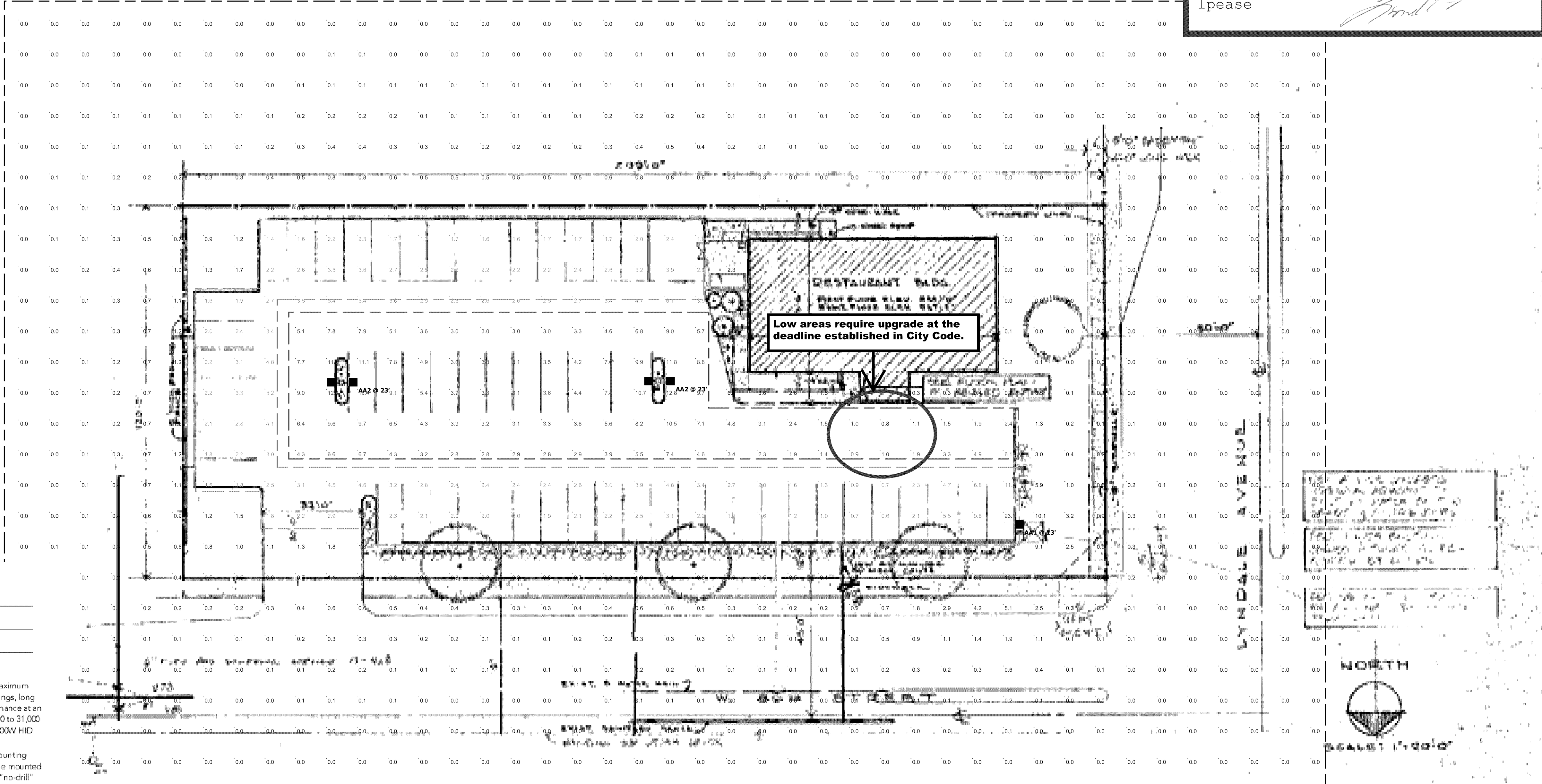
Plan View
Scale: 1" = 20'

Symbol	Label	Quantity	Manufacturer	Catalog Number	Description	Lamp	Number Lamps	Filename	Lumens Per Lamp	Light Loss Factor	Wattage
□	AA1	1	Lithonia Lighting	RSX2 LED P5 40K R4	RSX Area Fixture Size 2 P5 Lumen Package 4000K CCT Type R4 Distribution		1	RSX2_LED_P5_40K_R4.ies	28993	0.81	213.48
□	AA2	2	Lithonia Lighting	RSX2 LED P5 40K R4	RSX Area Fixture Size 2 P5 Lumen Package 4000K CCT Type R4 Distribution		1	RSX2_LED_P5_40K_R4.ies	28993	0.81	426.96

Description	Symbol	Avg	Max	Min	Max/Min	Avg/Min
1FC Area		2.9 fc	23.1 fc	0.5 fc	46.2:1	5.8:1
2FC Area		5.2 fc	12.8 fc	0.8 fc	16.0:1	6.5:1
Total Area @ Grade	+	1.0 fc	23.1 fc	0.0 fc	N/A	N/A

Note
1. Davis and Associates, Inc does not assume responsibility for the interpretation of this calculation, or compliance to local or state lighting codes and ordinances.
2. All readings/calculations are shown @ grade.
3. Fixtures are 23' 0" A.F.G.

LIGHTING PLAN APPROVED
No changes in fixture or location without a revised plan review.
10/07/2019
lpeace

RSX2 LED Area Luminaire

Color Number	
Beam	
Type	

Introduction
The new RSX LED Area family delivers maximum value by providing significant energy savings, long life and outstanding photometric performance at an affordable price. The RSX2 delivers 11,000 to 31,000 lumens allowing it to replace 250W to 1000W HID luminaires.
The RSX features an integral universal mounting mechanism that allows the luminaire to be mounted on most existing drill hole patterns. This "no-drill" solution provides significant labor savings. An easy-access door on the bottom of mounting arm allows for wiring without opening the electrical compartment. A mast arm adaptor and an adjustable integral slip-fitter are also available.

Specifications

EPA (ft²/100')	0.69 ft² (0.06 m²)
Length:	29.3" (74.4 cm)
Width:	13.4" (34.0 cm)
Height:	3.0" (7.6 cm) Main Body 7.2" (18.3 cm) Arm
Weight (max):	33.0 lbs (15.0 kg)

Ordering Information EXAMPLE: RSX2 LED P6 40K R3 MVOLT SPA DDBXD

Series	Performance Package	Color Temperature	Distribution	Voltage	Mounting
RSX2LED	P1	30K 3000K	R5 Spot 3.6/60	MVOLT 120V-277V	SPA Square pole mounting, 36" to 50" for 1-4/000 lbs, 1.5/2.5/3.5/4.5/5.5/6.5/7.5/8.5/9.5/10.5/11.5/12.5/13.5/14.5/15.5/16.5/17.5/18.5/19.5/20.5/21.5/22.5/23.5/24.5/25.5/26.5/27.5/28.5/29.5/30.5/31.5/32.5/33.5/34.5/35.5/36.5/37.5/38.5/39.5/40.5/41.5/42.5/43.5/44.5/45.5/46.5/47.5/48.5/49.5/50.5/51.5/52.5/53.5/54.5/55.5/56.5/57.5/58.5/59.5/60.5/61.5/62.5/63.5/64.5/65.5/66.5/67.5/68.5/69.5/70.5/71.5/72.5/73.5/74.5/75.5/76.5/77.5/78.5/79.5/80.5/81.5/82.5/83.5/84.5/85.5/86.5/87.5/88.5/89.5/90.5/91.5/92.5/93.5/94.5/95.5/96.5/97.5/98.5/99.5/100.5
	P2	40K 4000K	R4 Spot 3.6/60	MVOLT 120V-277V	RA Round pole mounting, 11.2" max pole dia for 1.2/1.4/1.6/1.8/2.0/2.2/2.4/2.6/2.8/3.0/3.2/3.4/3.6/3.8/4.0/4.2/4.4/4.6/4.8/5.0/5.2/5.4/5.6/5.8/6.0/6.2/6.4/6.6/6.8/7.0/7.2/7.4/7.6/7.8/8.0/8.2/8.4/8.6/8.8/9.0/9.2/9.4/9.6/9.8/10.0/10.2/10.4/10.6/10.8/11.0/11.2/11.4/11.6/11.8/12.0/12.2/12.4/12.6/12.8/13.0/13.2/13.4/13.6/13.8/14.0/14.2/14.4/14.6/14.8/15.0/15.2/15.4/15.6/15.8/16.0/16.2/16.4/16.6/16.8/17.0/17.2/17.4/17.6/17.8/18.0/18.2/18.4/18.6/18.8/19.0/19.2/19.4/19.6/19.8/20.0/20.2/20.4/20.6/20.8/21.0/21.2/21.4/21.6/21.8/22.0/22.2/22.4/22.6/22.8/23.0/23.2/23.4/23.6/23.8/24.0/24.2/24.4/24.6/24.8/25.0/25.2/25.4/25.6/25.8/26.0/26.2/26.4/26.6/26.8/27.0/27.2/27.4/27.6/27.8/28.0/28.2/28.4/28.6/28.8/29.0/29.2/29.4/29.6/29.8/30.0/30.2/30.4/30.6/30.8/31.0/31.2/31.4/31.6/31.8/32.0/32.2/32.4/32.6/32.8/33.0/33.2/33.4/33.6/33.8/34.0/34.2/34.4/34.6/34.8/35.0/35.2/35.4/35.6/35.8/36.0/36.2/36.4/36.6/36.8/37.0/37.2/37.4/37.6/37.8/38.0/38.2/38.4/38.6/38.8/39.0/39.2/39.4/39.6/39.8/40.0/40.2/40.4/40.6/40.8/41.0/41.2/41.4/41.6/41.8/42.0/42.2/42.4/42.6/42.8/43.0/43.2/43.4/43.6/43.8/44.0/44.2/44.4/44.6/44.8/45.0/45.2/45.4/45.6/45.8/46.0/46.2/46.4/46.6/46.8/47.0/47.2/47.4/47.6/47.8/48.0/48.2/48.4/48.6/48.8/49.0/49.2/49.4/49.6/49.8/50.0/50.2/50.4/50.6/50.8/51.0/51.2/51.4/51.6/51.8/52.0/52.2/52.4/52.6/52.8/53.0/53.2/53.4/53.6/53.8/54.0/54.2/54.4/54.6/54.8/55.0/55.2/55.4/55.6/55.8/56.0/56.2/56.4/56.6/56.8/57.0/57.2/57.4/57.6/57.8/58.0/58.2/58.4/58.6/58.8/59.0/59.2/59.4/59.6/59.8/60.0/60.2/60.4/60.6/60.8/61.0/61.2/61.4/61.6/61.8/62.0/62.2/62.4/62.6/62.8/63.0/63.2/63.4/63.6/63.8/64.0/64.2/64.4/64.6/64.8/65.0/65.2/65.4/65.6/65.8/66.0/66.2/66.4/66.6/66.8/67.0/67.2/67.4/67.6/67.8/68.0/68.2/68.4/68.6/68.8/69.0/69.2/69.4/69.6/69.8/70.0/70.2/70.4/70.6/70.8/71.0/71.2/71.4/71.6/71.8/72.0/72.2/72.4/72.6/72.8/73.0/73.2/73.4/73.6/73.8/74.0/74.2/74.4/74.6/74.8/75.0/75.2/75.4/75.6/75.8/76.0/76.2/76.4/76.6/76.8/77.0/77.2/77.4/77.6/77.8/78.0/78.2/78.4/78.6/78.8/79.0/79.2/79.4/79.6/79.8/80.0/80.2/80.4/80.6/80.8/81.0/81.2/81.4/81.6/81.8/82.0/82.2/82.4/82.6/82.8/83.0/83.2/83.4/83.6/83.8/84.0/84.2/84.4/84.6/84.8/85.0/85.2/85.4/85.6/85.8/86.0/86.2/86.4/86.6/86.8/87.0/87.2/87.4/87.6/87.8/88.0/88.2/88.4/88.6/88.8/89.0/89.2/89.4/89.6/89.8/90.0/90.2/90.4/90.6/90.8/91.0/91.2/91.4/91.6/91.8/92.0/92.2/92.4/92.6/92.8/93.0/93.2/93.4/93.6/93.8/94.0/94.2/94.4/94.6/94.8/95.0/95.2/95.4/95.6/95.8/96.0/96.2/96.4/96.6/96.8/97.0/97.2/97.4/97.6/97.8/98.0/98.2/98.4/98.6/98.8/99.0/99.2/99.4/99.6/99.8/100.0
	P3	50K 5000K	R5 Spot 3.6/60	MVOLT 120V-277V	MA Mast arm mounting (1/2" to 2.0" horizontal travel)
	P4	50K 5000K	R5 Spot 3.6/60	MVOLT 120V-277V	IS Adjustable dip/tilt (1/2" to 3.0" travel)
	P5	50K 5000K	ARR Asymmetric beam	MVOLT 120V-277V	WSA Wall bracket

Options	Flash
<p>Shipped Installed</p> <ul style="list-style-type: none"> IS Intra-side shield PI Precision beam style PE Precision external shield, adjustable PB7 Precision beam style, adjustable PS Precision beam style, adjustable CS4 Control only 14" x 14" (30" x 30") SF Single face (10, 27, 30") DF Double face (20, 34, 48") SPD20EV 200V Super pack (100V standard) 140 140 degree beam spread DW6 0.125" dia recessed (standard) <p>Shipped Separately (requires some field assembly)</p> <ul style="list-style-type: none"> ES External glare shield ISPV Internal glare shield (30" x 30" and light fixture) IS Single 	<p>Shipped Installed</p> <ul style="list-style-type: none"> *Standard Sensor Controls factory default settings, see table page 51 PRS Sensor/Lux sensor for 8-20 mounting heights PRBS Sensor/Lux sensor for 20-40 mounting heights *Networked Sensor Controls W1402 140 degree beam spread sensor for use with W1402 PRBN Networked, 3-wire sensor/Lux sensor for use with W1402 <p>*Note: Sensor coverage pattern is affected when luminaire is tilted.</p>

BRIDGEMAN RESTAURANT ALTERATIONS TO SOMEBODY'S HOUSE RESTAURANT
WEST 4TH STREET & LINDALE AVENUE
BLOOMINGTON, MINNESOTA

NEUTRAIR DRANE & SERRING ARCHITECTS

SITE PLAN
1" = 30' 0"

SOMEONE'S HOUSE RESTAURANT
201 W. 4 LINDALE AVENUE
BLOOMINGTON, MINN.

CONSULTANT:
DAVIS & ASSOCIATES
630 OTTAWA AVE. WEST PALM BEACH, FL

DATE: 2-18-19
SHEET: C-1
REVISED: 01