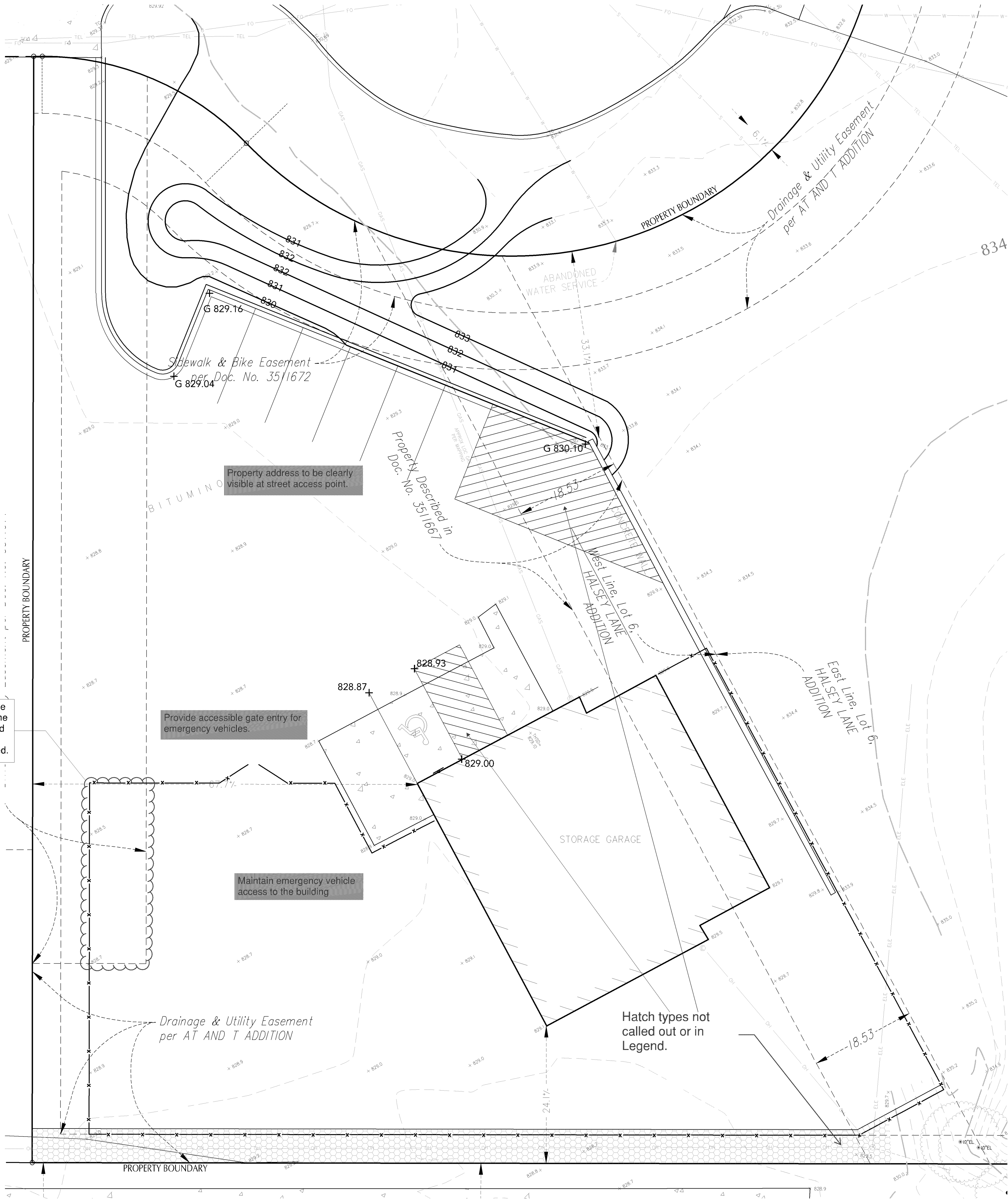
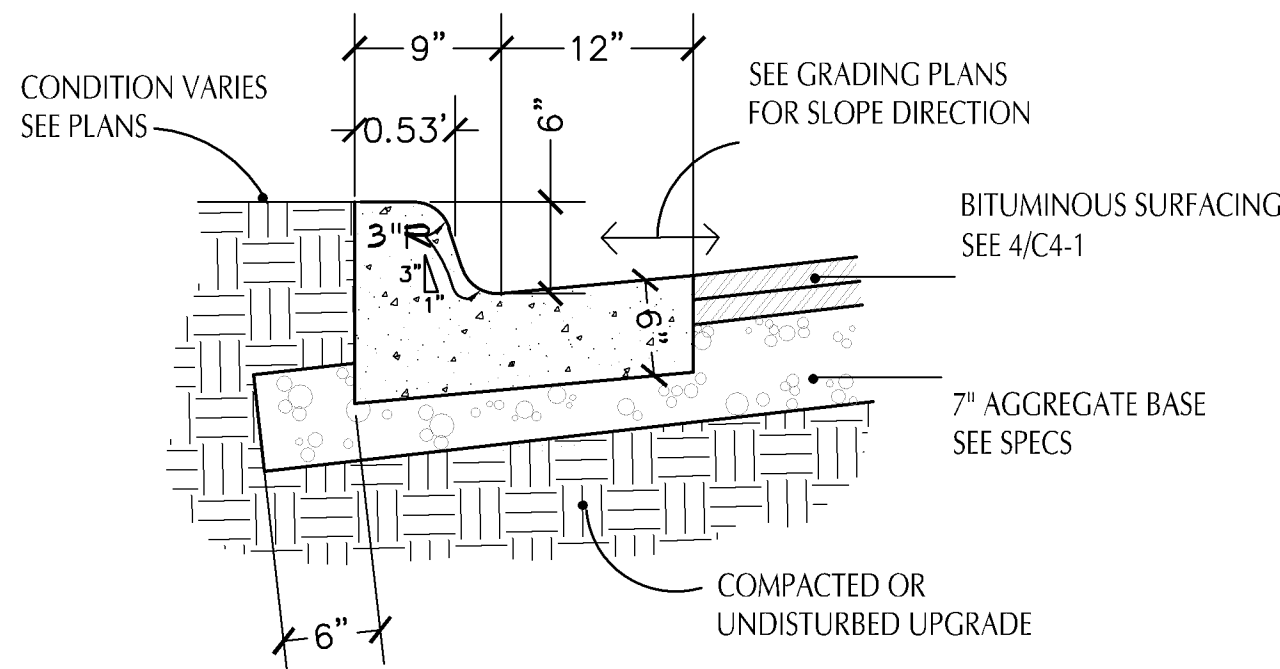
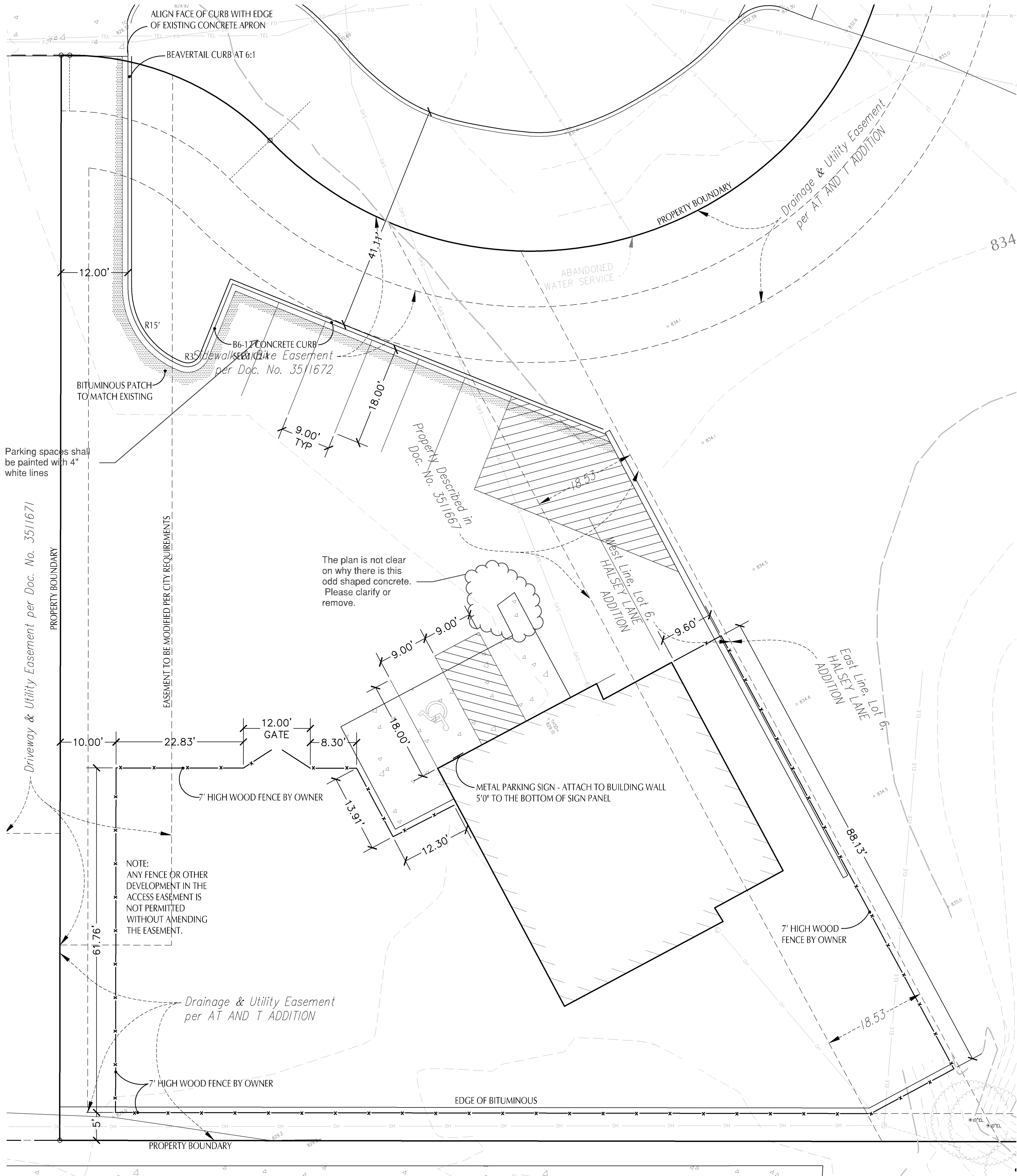


Plotted: 11/01/2016 3:55 PM W:\2015\15634\CADD DATA\CIVIL\SITE IMPROVEMENTS\C15634-SITE PLANS

If the storage and fence are in the access easement, the property must be combined with the site to the west or easement must be modified.



Plotted: 11/01/2016 3:53 PM W:\2015\15634\CADD DATA\CIVIL\SITE IMPROVEMENTS\C15634-SITE PLANS



NOTES:
1. PLACE CONTRACTION JOINTS EVERY 10' O.C.

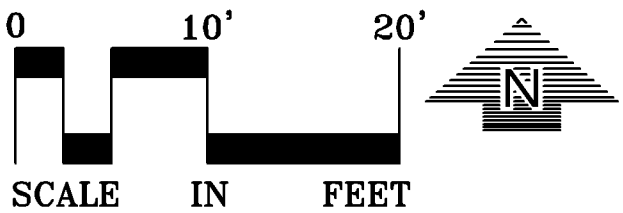


B6-12 CONCRETE CURB

SCALE: 1"= 1'-0"

NOTES:

1. ELECTRONIC DATA IS AVAILABLE FROM LANDSCAPE ARCHITECT FOR SITE LAYOUT.
2. VERIFY LAYOUT AND DIMENSIONS SHOWN AND BRING TO THE ATTENTION OF THE LANDSCAPE ARCHITECT ANY DISCREPANCIES WHICH MAY COMPROMISE THE DESIGN AND / OR INTENT OF THE PROJECT'S LAYOUT.
3. THE ALIGNMENT AND GRADES OF THE PROPOSED SITE AMENITIES ARE SUBJECT TO FIELD ADJUSTMENT REQUIRED TO CONFORM TO LOCALIZED TOPOGRAPHIC CONDITIONS AND TO MINIMIZE GRADING. ANY CHANGE IN ALIGNMENT MUST BE APPROVED BY THE LANDSCAPE ARCHITECT.



510 Halsey Lane
Site
Improvements

Bloomington, Minnesota

AT&T

PO BOX 7207
BEDMINSTER, NJ 07921



PLANNING
CIVIL ENGINEERING
LAND SURVEYING
LANDSCAPE ARCHITECTURE
ENVIRONMENTAL

7200 Hemlock Lane, Suite 300
Maple Grove, MN 55369
763.424.5505
www.loucksync.com

CADD QUALIFICATION

CADD files prepared by the Consultant for this project are instruments of the Consultant professional services for use solely with respect to this project. These CADD files shall not be used on other projects, for additions to this project, or for completion of this project by others without written approval by the Consultant. With the Consultant's approval, others may be permitted to obtain copies of the CADD drawing files for information and reference only. All intentional or unintentional revisions, additions, or deletions to these CADD files shall be made at the full risk of that party making such revisions, additions or deletions and that party shall hold harmless and indemnify the Consultant from any & all responsibilities, claims, and liabilities.

SUBMITTAL/REVISIONS

11/01/16 CITY SUBMITTAL

PROFESSIONAL SIGNATURE

I hereby certify that this plan, specification or report was prepared by me or under my direct supervision and that I am a duly Licensed Professional Engineer under the laws of the State of Minnesota.

Jonathan J. Donovan - PE

License No. 44613
Date 11/01/16

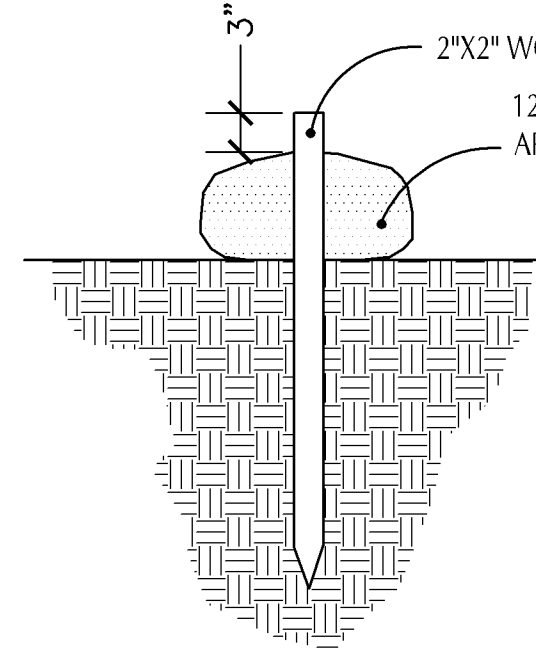
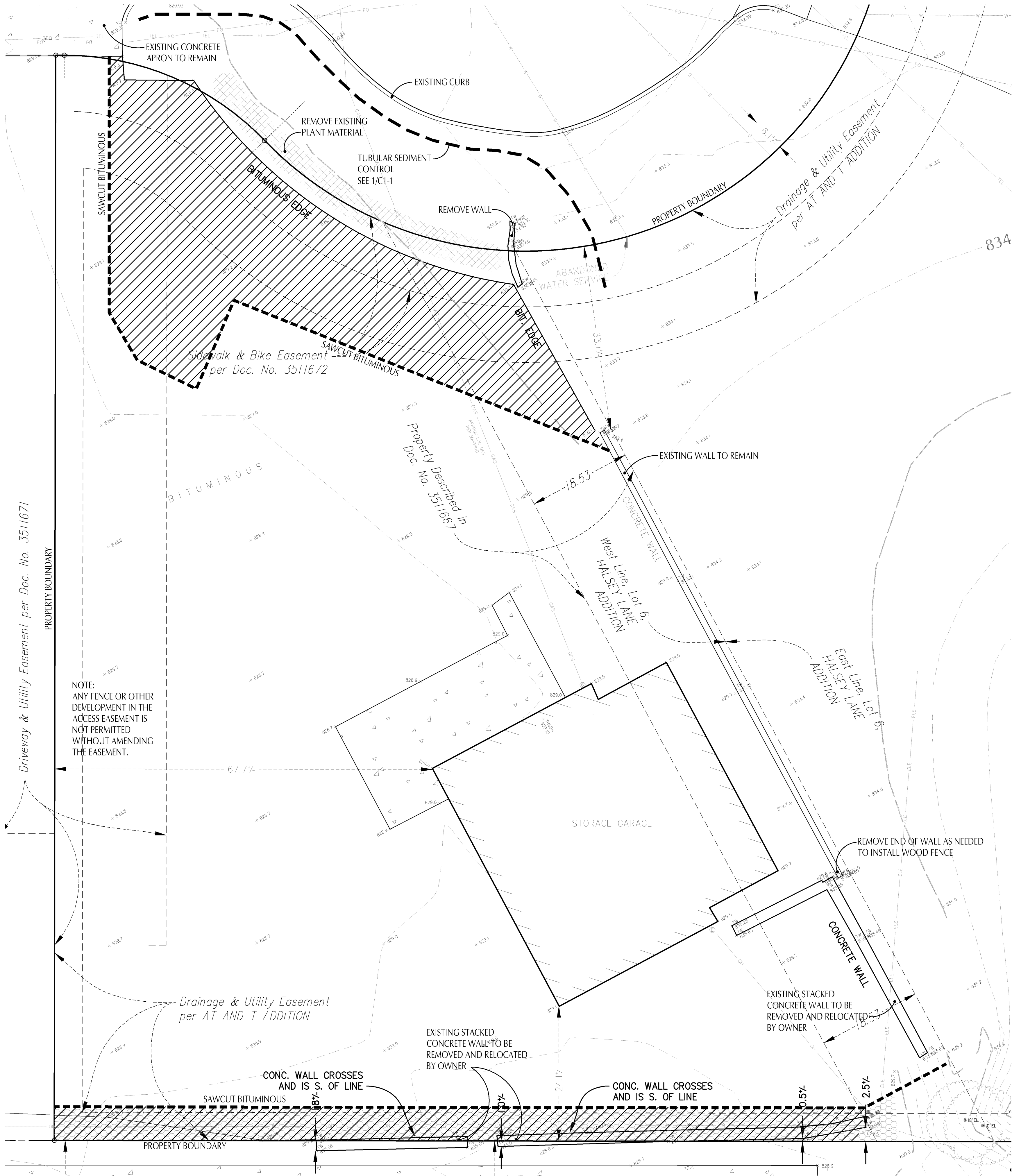
QUALITY CONTROL

Loucks Project No. 15634
Project Lead JJD
Drawn By GAJ
Checked By JJD
Review Date 11/01/16

SHEET INDEX

LAYOUT PLAN

C2-1



NOTE:
TUBULAR SEDIMENT
CONTROL DEVICE SHALL
BE 12" FILTREXX COMPOST
SILTSOXX BY FILTREXX
INTERNATIONAL
(440-926-2607) OR
APPROVED EQUAL.

1
C1-1

TUBULAR SEDIMENT CONTROL

NOT TO SCALE

DEMOLITION / SITE PREPARATION NOTES:

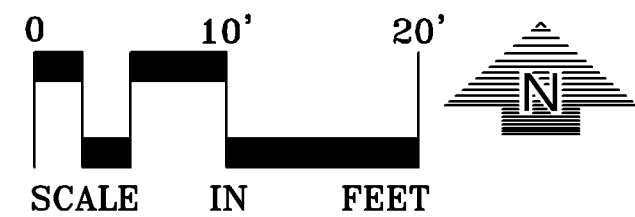
1. CONTRACTOR SHALL VISIT THE SITE PRIOR TO SUBMITTING BID. INSPECT THE SITE AND BECOME FAMILIAR WITH EXISTING CONDITIONS RELATING TO THE NATURE AND SCOPE OF THE WORK.
2. ASSURE COMPLIANCE WITH ALL APPLICABLE CODES AND REGULATIONS GOVERNING THE WORK OR MATERIALS SUPPLIED.
3. ALL SEDIMENT AND EROSION CONTROL MEASURES AS REQUIRED BY STATE AND LOCAL CODES SHALL BE INSTALLED PRIOR TO ANY DEMOLITION OR EARTHWORK ACTIVITIES, SEE EROSION CONTROL SHEET.
4. LOCATION AND SIZES OF ALL UNDERGROUND UTILITIES ARE APPROXIMATE AND ARE SHOWN BASED ON FIELD LOCATION OF VIEWABLE FIXTURES. CONTRACTOR SHALL VERIFY LOCATIONS OF ALL UNDERGROUND UTILITIES WITH GOPHER ONE AND LOCAL UTILITY SERVICES. PROVIDE THE NECESSARY PROTECTION FOR EXISTING UTILITIES BEFORE CONSTRUCTION OR MATERIAL INSTALLATION BEGINS.
5. NO CONSTRUCTION, DEMOLITION OR COMMERCIAL POWER MAINTENANCE EQUIPMENT SHALL BE OPERATED BETWEEN THE HOURS OF 6:00 PM AND 7:00AM ON WEEKDAYS OR DURING ANY HOURS ON SATURDAYS, SUNDAYS AND STATE AND FEDERAL HOLIDAYS, EXCEPT AS APPROVED BY OWNER.
6. CONTRACTOR IS RESPONSIBLE FOR ANY DAMAGE TO EXISTING SITE FEATURES TO REMAIN. ANY DAMAGE TO SAME SHALL BE REPAIRED AT NO COST TO THE OWNER. ANY DAMAGE TO EXISTING SITE FEATURES SHALL BE REPORTED TO LANDSCAPE ARCHITECT AND OWNER PRIOR TO START OF CONSTRUCTION ACTIVITIES.
7. LOCATIONS FOR STORING CONSTRUCTION EQUIPMENT AND MATERIALS SHALL BE COORDINATED WITH THE OWNER.
8. ALL CONSTRUCTION PARKING SHALL BE AS DIRECTED BY THE OWNER.
10. REMOVE STUMPS AND ROOTS LARGER THAN 2" DIAMETER ON ALL TREES TO BE REMOVED.
11. BITUMINOUS REMOVAL SHALL INCLUDE ALL BITUMINOUS AND BASE MATERIAL

LEGEND

- TUBULAR SEDIMENT CONTROL - SEE 2/C1-1
- BITUMINOUS SURFACE TO BE REMOVED - SEE NOTE #11
- 93.4- EXISTING CONTOUR

THE CONTRACTOR SHALL BE RESPONSIBLE FOR CALLING FOR LOCATIONS OF ALL EXISTING UTILITIES. THEY SHALL COOPERATE WITH ALL UTILITY COMPANIES IN MAINTAINING THEIR SERVICE AND / OR RELOCATION OF LINES.

THE CONTRACTOR SHALL CONTACT GOPHER STATE ONE CALL AT 651-454-0002 AT LEAST 48 HOURS IN ADVANCE FOR THE LOCATIONS OF ALL UNDERGROUND WIRES, CABLES, CONDUITS, PIPES, MANHOLES, VALVES OR OTHER BURIED STRUCTURES BEFORE DIGGING. THE CONTRACTOR SHALL REPAIR OR REPLACE THE ABOVE WHEN DAMAGED DURING CONSTRUCTION AT NO COST TO THE OWNER.



CALL BEFORE YOU DIG!

Gopher State One Call

TWIN CITY AREA: 651-454-0002
TOLL FREE: 1-800-252-1166

510 Halsey Lane Site Improvements

Bloomington, Minnesota

AT&T

PO BOX 7207
BEDMINSTER, NJ 07921

LOUCKS

PLANNING
CIVIL ENGINEERING
LAND SURVEYING
LANDSCAPE ARCHITECTURE
ENVIRONMENTAL

7200 Hemlock Lane, Suite 300
Maple Grove, MN 55369
763.424.5505
www.loucksinc.com

CADD QUALIFICATION

CADD files prepared by the Consultant for this project are instruments of the Consultant professional services for use solely with respect to this project. These CADD files shall not be used on other projects, for additions to this project, or for completion of this project by others without written approval by the Consultant. With the Consultant's approval, others may be permitted to obtain copies of the CADD drawing files for information and reference only. All intentional or unintentional revisions, additions, or deletions to these CADD files shall be made at the full risk of that party making such revisions, additions or deletions and that party shall hold harmless and indemnify the Consultant from any & all responsibilities, claims, and liabilities.

SUBMITTAL/REVISIONS

11/01/16 CITY SUBMITTAL

PROFESSIONAL SIGNATURE

I hereby certify that this plan, specification or report was prepared by me or under my direct supervision and that I am a duly Licensed Professional Engineer under the laws of the State of Minnesota.

Jonathan J. Donovan - PE

License No. 44613
Date 11/01/16

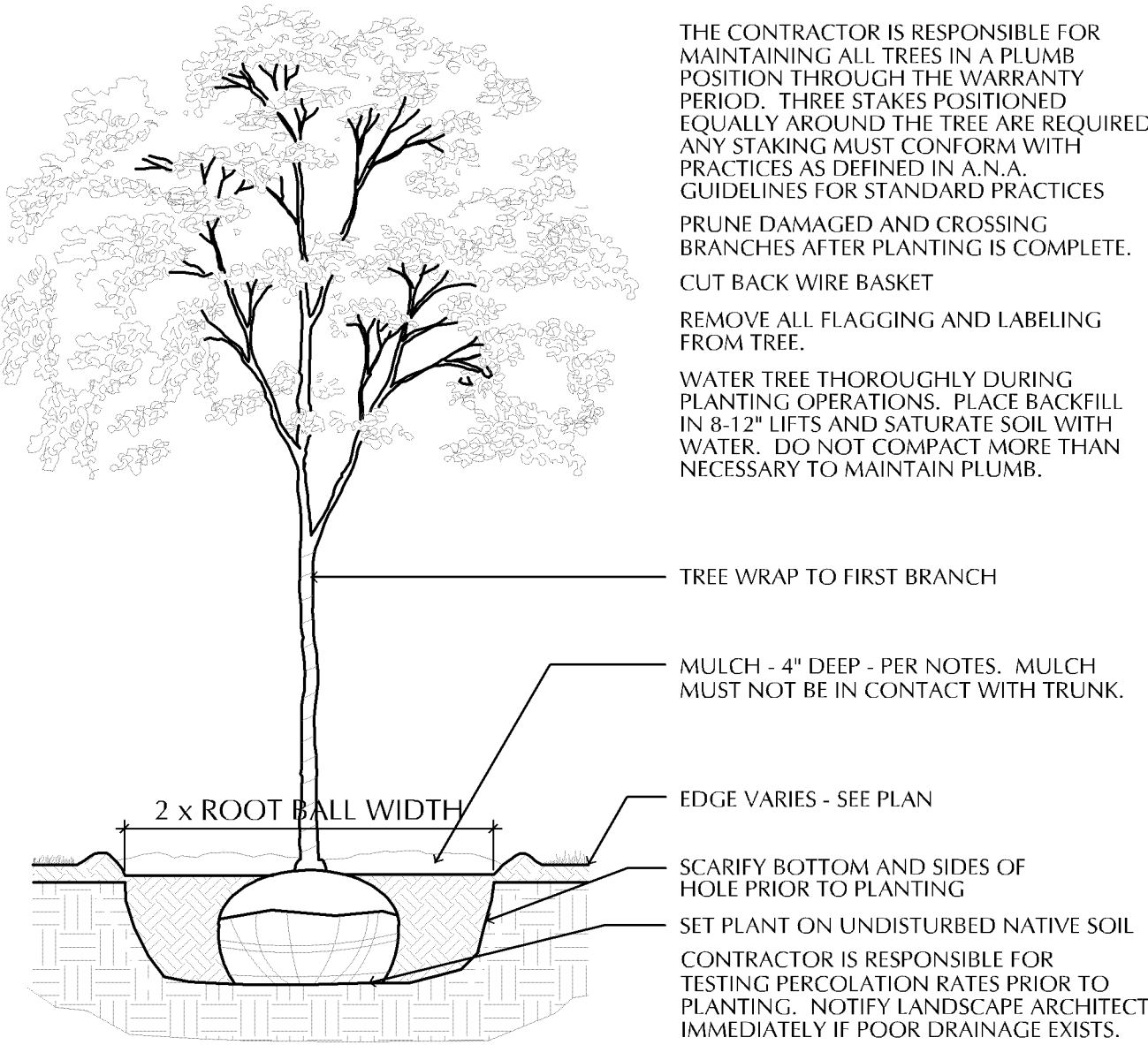
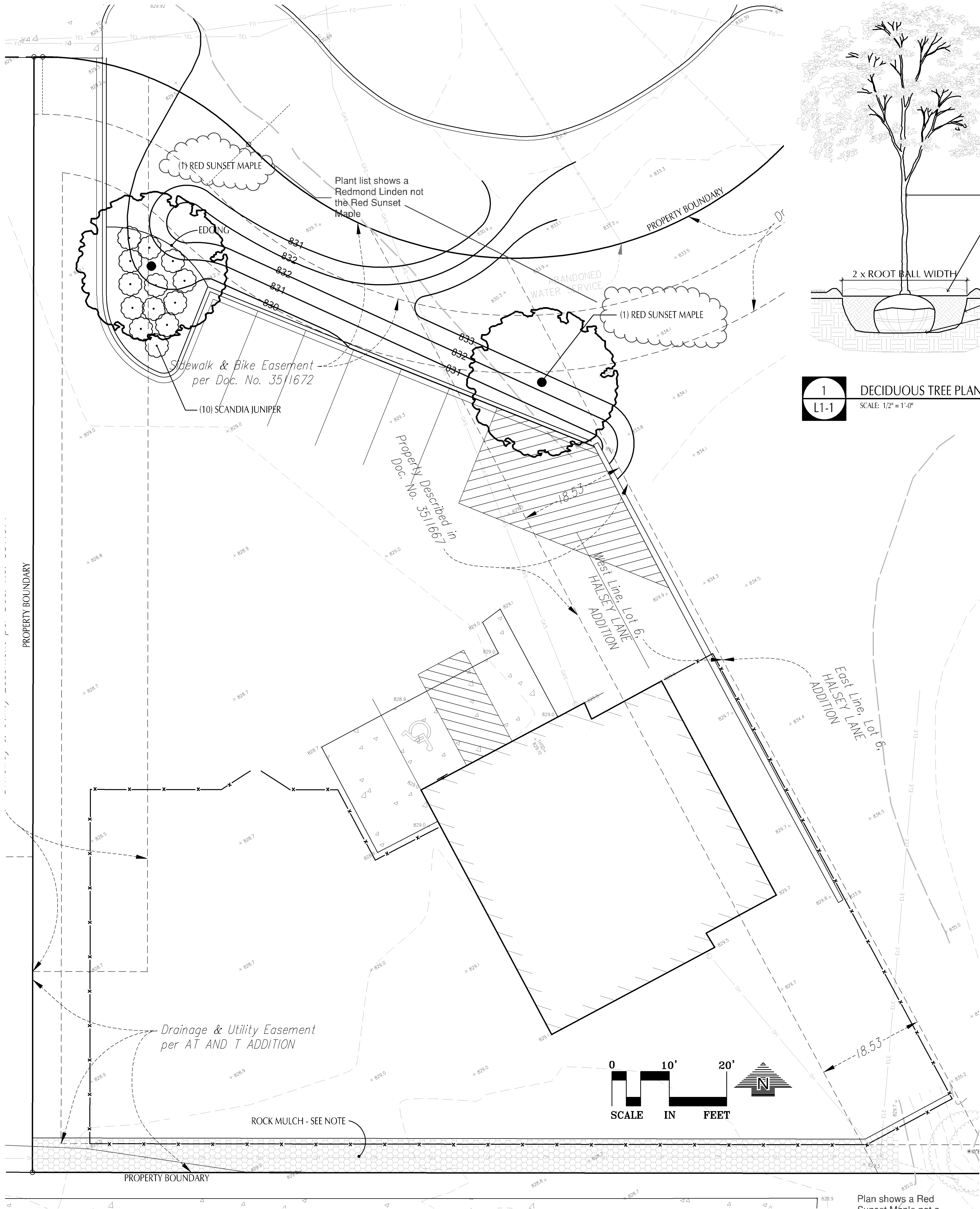
QUALITY CONTROL

Loucks Project No. 15634
Project Lead JJD
Drawn By GAJ
Checked By JJD
Review Date 11/01/16

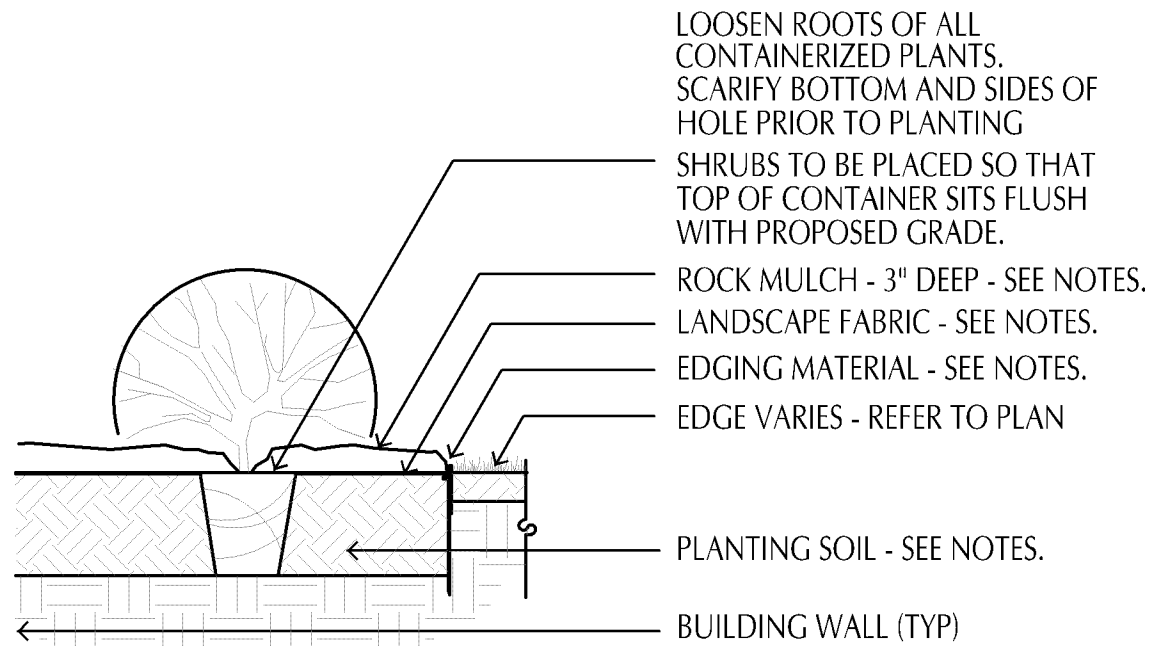
SHEET INDEX

EXISTING CONDITIONS / DEMOLITION

C1-1



1
L1-1
DECIDUOUS TREE PLANTING DETAIL
SCALE: 1/2" = 1'-0"
Deciduous Tree DWG



2
L1-1
SHRUB PLANTING DETAIL
SCALE: 3/4" = 1'-0"

LANDSCAPE INSTALLATION NOTES:

- COORDINATE THE PHASES OF CONSTRUCTION AND PLANTING INSTALLATION WITH OTHER CONTRACTORS WORKING ON SITE.
- NO PLANTING WILL BE INSTALLED UNTIL COMPLETE GRADING AND CONSTRUCTION HAS BEEN COMPLETED IN THE IMMEDIATE AREA.
- SEED ALL DESIGNATED AREAS DISTURBED DUE TO GRADING.
- ALL SEEDED AREAS SHALL HAVE 4" OF TOPSOIL BORROW. TOPSOIL BORROW SHALL BE USDA CLASSIFICATION MEDIUM SANDY LOAM. THE TOPSOIL SHALL HAVE 50% TO 70% SAND BY WEIGHT, A SILT/CLAY RATIO OF 2/1 OR LESS WITH NO MORE THAN 15% TO 20% CLAY BY WEIGHT AND 12% TO 20% ORGANIC MATTER BY WEIGHT.
- ALL PLANT MATERIAL SHALL COMPLY WITH THE LATEST EDITION OF THE AMERICAN STANDARD FOR NURSERY STOCK, AMERICAN ASSOCIATION OF NURSERYMEN. UNLESS NOTED OTHERWISE, DECIDUOUS SHRUBS SHALL HAVE AT LEAST 5 CANES AT THE SPECIFIED SHRUB HEIGHT. ORNAMENTAL TREES SHALL HAVE NO V CROTCHES AND SHALL BEGIN BRANCHING NO LOWER THAN 3' ABOVE ROOT BALL. STREET AND BOULEVARD TREES SHALL BEGIN BRANCHING NO LOWER THAN 6' ABOVE FINISHED GRADE.
- PLAN TAKES PRECEDENCE OVER PLANT SCHEDULE IF DISCREPANCIES IN QUANTITIES EXIST. SPECIFICATIONS TAKE PRECEDENCE OVER NOTES.
- ALL PROPOSED PLANTS SHALL BE LOCATED AND STAKED AS SHOWN ON PLAN.
- NO PLANT MATERIAL SUBSTITUTIONS WILL BE ACCEPTED UNLESS APPROVAL IS REQUESTED OF THE LANDSCAPE ARCHITECT BY THE LANDSCAPE CONTRACTOR PRIOR TO THE SUBMISSION OF A BID AND/OR QUOTATION.
- ADJUSTMENTS IN LOCATION OF PROPOSED PLANT MATERIALS MAY BE NEEDED IN FIELD. SHOULD AN ADJUSTMENT BE ADVISED, THE LANDSCAPE ARCHITECT MUST BE NOTIFIED.
- ALL PLANT MATERIALS SHALL BE FERTILIZED UPON INSTALLATION WITH DRIED BONE MEAL, OTHER APPROVED FERTILIZER MIXED IN WITH THE PLANTING SOIL PER THE MANUFACTURER'S INSTRUCTIONS OR MAY BE TREATED FOR SUMMER AND FALL INSTALLATION WITH AN APPLICATION OF GRANULAR 0-20-20 OF 12 OZ PER 2.5" CALIPER PER TREE AND 6 OZ PER SHRUB WITH AN ADDITIONAL APPLICATION OF 10-10-10 THE FOLLOWING SPRING IN THE TREE SAUCER.
- ALL PLANTS TO BE INSTALLED AS PER PLANTING DETAILS.
- WRAPPING MATERIAL SHALL BE CORRUGATED PVC PIPING 1" GREATER IN CALIPER THAN THE TREE BEING PROTECTED OR QUALITY, HEAVY, WATERPROOF CREPE PAPER MANUFACTURED FOR THIS PURPOSE. WRAP ALL DECIDUOUS TREES PLANTED IN THE FALL PRIOR TO 12-1 AND REMOVE ALL WRAPPING AFTER 5-1.
- COMMERCIAL GRADE BLACK PLASTIC EDGER TO BE USED TO CONTAIN SHRUBS, PERENNIALS, AND ANNUALS WHERE BED MEETS SOD/SEED UNLESS NOTED OTHERWISE.
- ALL PLANTING BEDS TO RECEIVE 3" DEEP QUARRY ROCK MULCH 3/4"-1-1/2" SIZE FROM LAKES CONCRETE PLUS (218-444-9112) OR APPROVED EQUAL. ROCK MULCH SHALL BE PLACED OVER 3.5 OUNCE MINIMUM FIBER MAT WEED BARRIER.
- ALL TREES NOT WITHIN PLANTING BEDS TO RECEIVE 4" DEEP SHREDDED HARDWOOD MULCH WITH NO MULCH IN DIRECT CONTACT WITH TREE TRUNK.
- SPREAD GRANULAR PRE EMERGENT HERBICIDE (PREEN OR EQUAL) PER MANUFACTURERS RECOMMENDATIONS UNDER ALL MULCHED AREAS.
- IF THE LANDSCAPE CONTRACTOR IS CONCERNED OR PERCEIVES ANY DEFICIENCIES IN THE PLANT SELECTIONS, SOIL CONDITIONS OR ANY OTHER SITE CONDITION WHICH MIGHT NEGATIVELY AFFECT PLANT ESTABLISHMENT, SURVIVAL OR GUARANTEE, HE MUST BRING THESE DEFICIENCIES TO THE ATTENTION OF THE LANDSCAPE ARCHITECT PRIOR TO PROCUREMENT AND/OR INSTALLATION.
- CONTRACTOR SHALL SUBMIT A WRITTEN REQUEST FOR THE OWNER ACCEPTANCE INSPECTION OF ALL LANDSCAPE AND SITE IMPROVEMENTS.
- CONTRACTOR IS RESPONSIBLE FOR ON-GOING MAINTENANCE OF ALL NEWLY INSTALLED MATERIALS UNTIL TIME OF OWNER ACCEPTANCE. ANY ACTS OF VANDALISM OR DAMAGE WHICH MAY OCCUR PRIOR TO OWNER ACCEPTANCE SHALL BE THE RESPONSIBILITY OF THE CONTRACTOR. CONTRACTOR SHALL PROVIDE THE OWNER WITH A MAINTENANCE PROGRAM INCLUDING, BUT NOT NECESSARILY LIMITED TO, PRUNING, FERTILIZATION AND DISEASE/PEST CONTROL.
- CONTRACTOR SHALL GUARANTEE NEW PLANT MATERIAL THROUGH ONE CALENDAR YEAR FROM THE DATE OF OWNER ACCEPTANCE.
- WARRANTY (ONE FULL GROWING SEASON) FOR LANDSCAPE MATERIALS SHALL BEGIN ON THE DATE OF ACCEPTANCE BY THE LANDSCAPE ARCHITECT AFTER THE COMPLETION OF PLANTING OF ALL LANDSCAPE MATERIALS. NO PARTIAL ACCEPTANCE WILL BE CONSIDERED.
- THE APPROPRIATE DATES FOR SPRING PLANT MATERIAL INSTALLATION AND SOD PLACEMENT IS FROM THE TIME GROUND HAS THAWED TO JUNE 15. FALL SODDING IS GENERALLY ACCEPTABLE FROM AUGUST 15 - NOVEMBER 1. FALL CONIFEROUS PLANTING MAY OCCUR FROM AUGUST 15 - OCTOBER 1 AND FALL DECIDUOUS PLANTING FROM THE FIRST FROST UNTIL NOVEMBER 15. PLANTING OUTSIDE THESE DATES IS NOT RECOMMENDED. ANY ADJUSTMENT MUST BE APPROVED IN WRITING BY THE LANDSCAPE ARCHITECT.
- LANDSCAPE CONTRACTOR SHALL ESTABLISH TO HIS SATISFACTION THAT SOIL AND COMPACTION CONDITIONS ARE ADEQUATE TO ALLOW FOR PROPER DRAINAGE AT AND AROUND THE BUILDING SITE.

PLANT LIST

KEY	QTY	COMMON NAME	SCIENTIFIC NAME	SIZE	COMMENTS
OVERSTORY TREES					
RL	2	REDMOND LINDEN	Tilia americana 'Redmond'	2-1/2" CAL B.B.	H 40-60' W 30'
CONIFEROUS SHRUBS					
SJ	10	SCANDIA JUNIPER	Juniperus sabinia 'Scandia'	#5 CONT	H 18" W 3-5'

**510 Halsey Lane
Site
Improvements**

Bloomington, Minnesota

AT&T

PO BOX 7207
BEDMINSTER, NJ 07921

LOUCKS

PLANNING
CIVIL ENGINEERING
LAND SURVEYING
LANDSCAPE ARCHITECTURE
ENVIRONMENTAL

7200 Hemlock Lane, Suite 300
Maple Grove, MN 55369
763.424.5505
www.loucksinc.com

CADD QUALIFICATION

CADD files prepared by the Consultant for this project are instruments of the Consultant professional services for use solely with respect to this project. These CADD files shall not be used on other projects, for additions to this project, or for completion of this project by others without written approval by the Consultant. With the Consultant's approval, others may be permitted to obtain copies of the CADD drawing files for information and reference only. All intentional or unintentional revisions, additions, or deletions to these CADD files shall be made at the full risk of that party making such revisions, additions or deletions and that party shall hold harmless and indemnify the Consultant from any & all responsibilities, claims, and liabilities.

SUBMITTAL/REVISIONS

11/01/16 CITY SUBMITTAL

PROFESSIONAL SIGNATURE

I hereby certify that this plan, specification or report was prepared by me or under my direct supervision and that I am a duly Licensed Professional Engineer under the laws of the State of Minnesota.

Jonathan J. Donovan - PE

License No. 44613
Date 11/01/16

QUALITY CONTROL

Loucks Project No. 15634
Project Lead JJD
Drawn By GAJ
Checked By JJD
Review Date 11/01/16

SHEET INDEX

**LANDSCAPE
PLAN**

L1-1