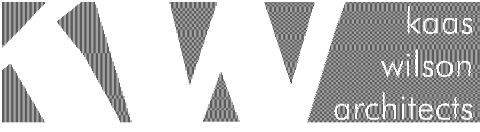
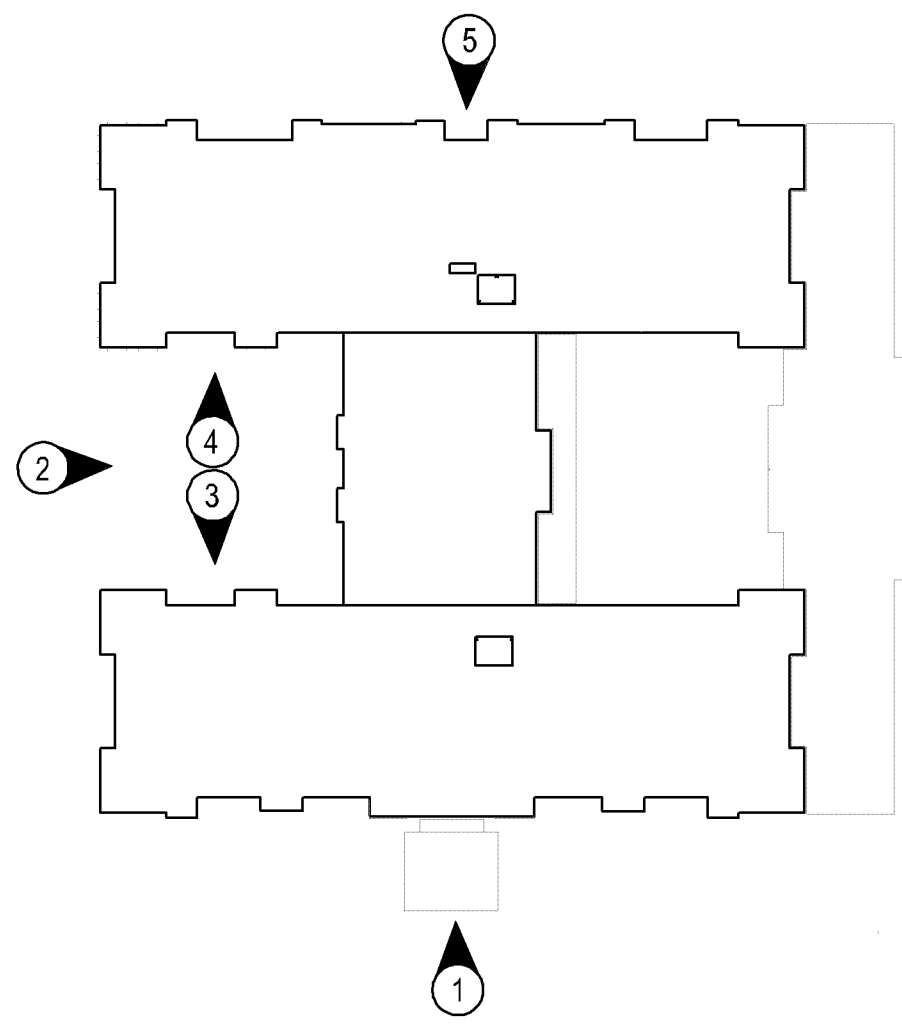


PL201900139
PL2019-139



- EXTERIOR ELEVATION NOTES**
- SEE DRAWING SHEET A820 FOR WINDOW HEAD, JAMB AND SILL DETAILS.
 - SEE SHEETS A800-A804 FOR EXTERIOR WALL DETAILS.
 - ALL DIMENSIONS AT EXTERIOR WALLS ARE TAKEN TO EXTERIOR FACE OF MASONRY AT CMU WALLS OR CENTER OF STUD AT FRAMED WALLS UNLESS NOTED OTHERWISE.
 - SEE SHEETS A010 FOR INTERIOR AND EXTERIOR WALL TYPES.
 - PROVIDE CONTROL JOINTS IN CONCRETE MASONRY WALLS EVERY 30'-0" (REGARDLESS IF SHOWN ON ELEVATION OR NOT SHOWN ON ELEVATION).
 - PROVIDE EXPANSION JOINTS IN BRICKWORK PER THE BRICK INDUSTRY ASSOCIATION TECH NOTES. TYP. EXPANSION JOINTS IN CLAY BRICKWORK SHALL BE LOCATED 20 FEET ON CENTER MAY BE LOCATED AT CORNERS, OFFSETS AND AT CHANGES IN SUPPORT, MATERIAL, WALL HEIGHT OR CHANGE IN BACK UP SYSTEM.
 - ALL WINDOWS IN ACMV TO HAVE PRECAST SILLS AND SOLDIER COURSE HEADERS.
 - FOR VERTICAL JOINTS OF DIS-SIMILAR MATERIALS VERIFY WITH ARCHITECT.
 - COMPLY WITH FLASHING DETAILS ON SHEETS A840 FOR ROOF DETAILS.
 - ALL HORIZONTAL TRIM BANDS THAT OCCUR ON THE FACE OF A BAY RETURN BACK TO THE MAIN BODY OF THE BUILDING.
 - ANY CULTURED STONE LOCATED ABOVE A FLAT OR SLOPING ROOF SURFACE SHALL BE HELD ABOVE THE ROOF SURFACE PER THE MANUFACTURER'S REQUIREMENTS. PROVIDE PREFINISHED METAL FLASHING BELOW CULTURED STONE - COLOR TO BE SELECTED BY ARCHITECT.
 - ALL OUTSIDE CORNERS AT CFB PANEL SIDING SHALL RECEIVE VERTICAL CORNER BOARDS, BOTH SIDES OF CORNER SEE A801.
 - CMU PRECAST SILL TO OCCUR AT ALL CMU TO CFB TRANSITIONS.
 - JOINTS OF ALL STONE SILLS SHALL BE RAKED AND FILLED W/ COLOR MATCHED SEALANT.
 - WHERE CMU FOUNDATION (OR VENEER) IS EXPOSED ABOVE GRADE, IT SHALL BE COLORED ARCHITECTURAL CMU COLOR TO BE SELECTED BY ARCHITECT.
 - DOWN SPOUTS SHALL CONNECT TO STORM SEWER SYSTEM TYPICAL. SEE CIVIL DRAWINGS.

- EXTERIOR MATERIALS TAG KEY**
- (1) ENVIRONMENTAL STONE WORKS ACMV - COLOR: TBD
 - (2) COLORED CMU ROCKFACE VENEER - COLOR: TBD
 - (3) SOLID CMU SILL - COLOR: TBD
 - (4) CAST STONE LINTEL - COLOR: TBD
 - (5) CAST STONE BANDING - COLOR: TBD
 - (6) ALUMINUM BALCONY & RAILINGS - COLOR: TBD
 - (7) 8" EDDO ENTLEX LAP SIDING - WOOD GRAIN - COLOR: 1-TBD
 - (8) 4" DOUBLE EDDO ENTLEX LAP SIDING - WOOD GRAIN - COLOR: 2-TBD
 - (9) PREFINISHED METAL COPING - COLOR: TBD
 - (10) HARDIE PANEL SIDING - STUCCO TEXTURE - COLOR: TBD
 - (11) TRIM - COLOR: TBD
 - (12) GLAZING - COLOR: TBD
 - (13) MAGIC PAK GRILL - COLOR: TBD
 - (14) PTAC GRILL - COLOR: TBD
 - (15) EXTERIOR LIGHTING - COLOR: BLACK
- PROVIDE DRY SPRINKLER HEADS AT COMBUSTIBLE BALCONIES. NON-COMBUSTIBLE BALCONIES DO NOT REQUIRE SPRINKLERS PER 8.18.7.2 OF NFPA 13



1301 American Blvd E.
Suite 100
Bloomington, MN 55425
tel: (612) 879-6000
fax: (612) 879-6666
www.kosswilson.com

Structural:
BKBM Engineers
6120 Earle Brown Drive, Suite
700
Minneapolis, MN 55430
P: (763) 843-0420

MEP:
Design Build

General Contractor:
Weiss Builders Inc
7645 Lyndale Ave S, Suite
300
Minneapolis, MN 55423
P: (612) 243-5000

Project:
Cherrywood Pointe of Bloomington
5507 American Boulevard W.
Bloomington, MN 55407

Owner:
United Properties
651 Nicollet Mall Suite 450 Minneapolis, MN 55402

Project Number 17058

Date 8.7.19 - Permit Set

I HEREBY CERTIFY THAT THIS PLAN, SPECIFICATION OR REPORT WAS PREPARED UNDER MY DIRECT SUPERVISION AND THAT I AM A REGISTERED ARCHITECT UNDER THE LAWS OF THE STATE OF MINNESOTA.

LINK WILSON REG. NO. 21629

Date 08/27/19 10:31:19

Revision Addressed #01 A81 #01

Rev. No. 2

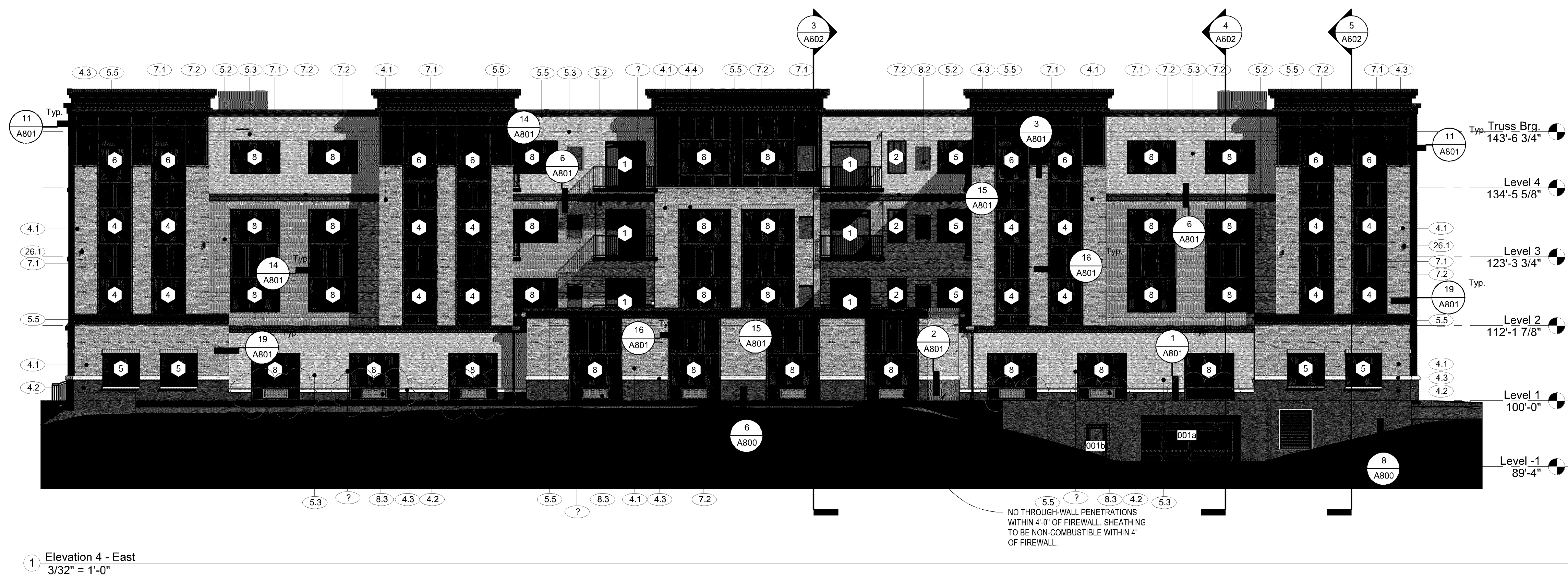
Exterior Elevations

As indicated

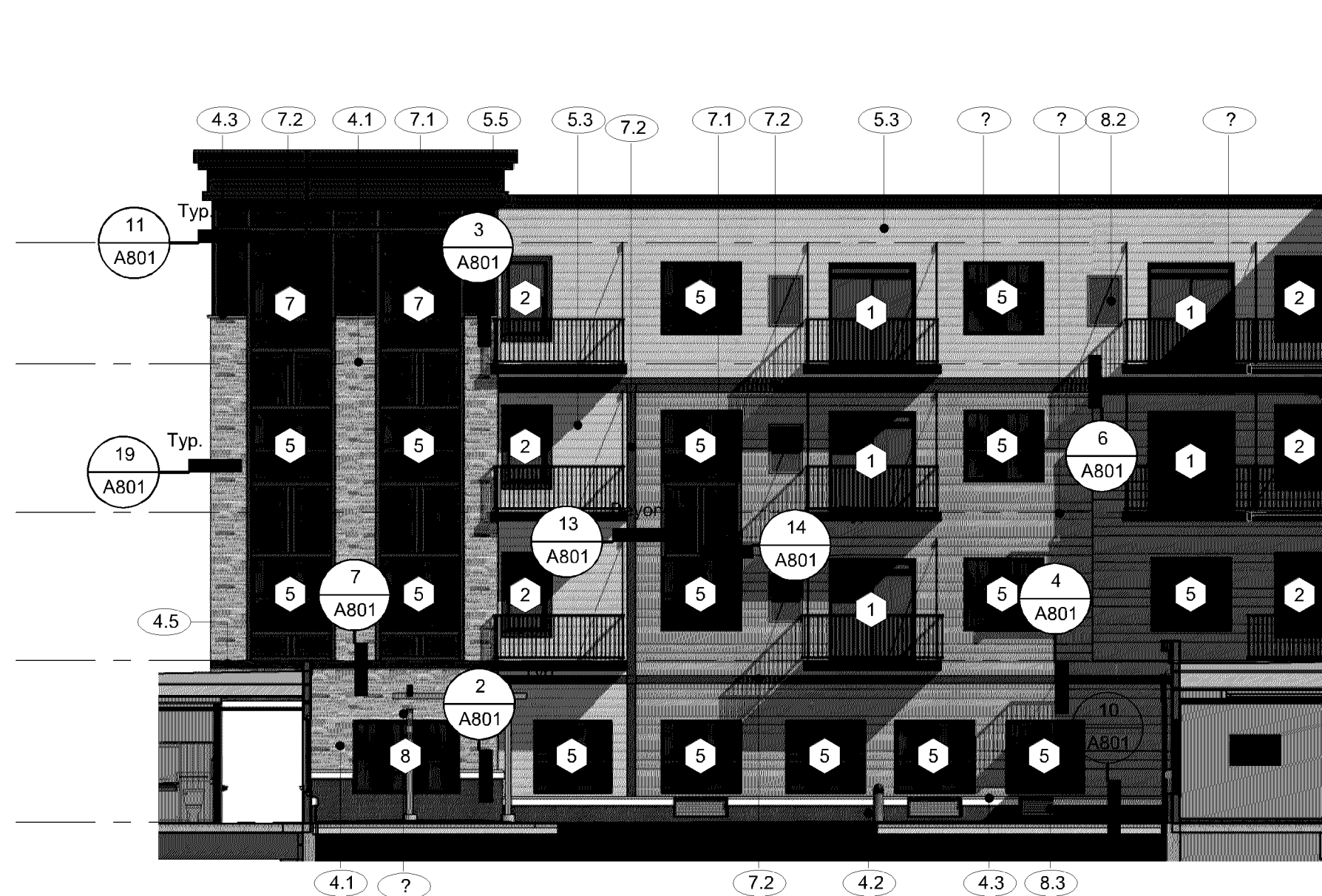
A500

C:\Revit Local\17058-LP-Bloomington-American Blvd_V4_gjameson.rvt

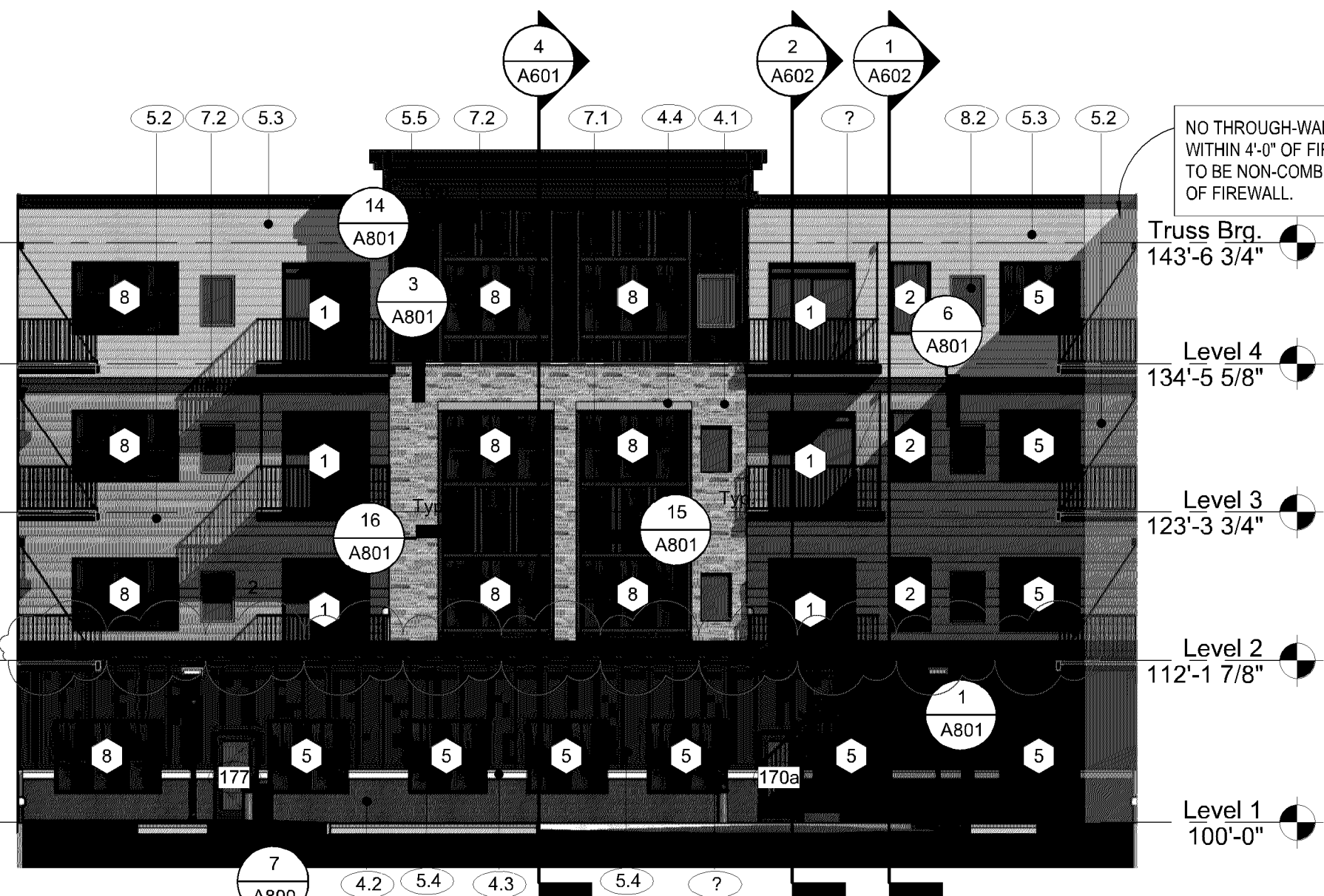
Copyright Koss Wilson Architects 1/11/2019 1:35:35 PM



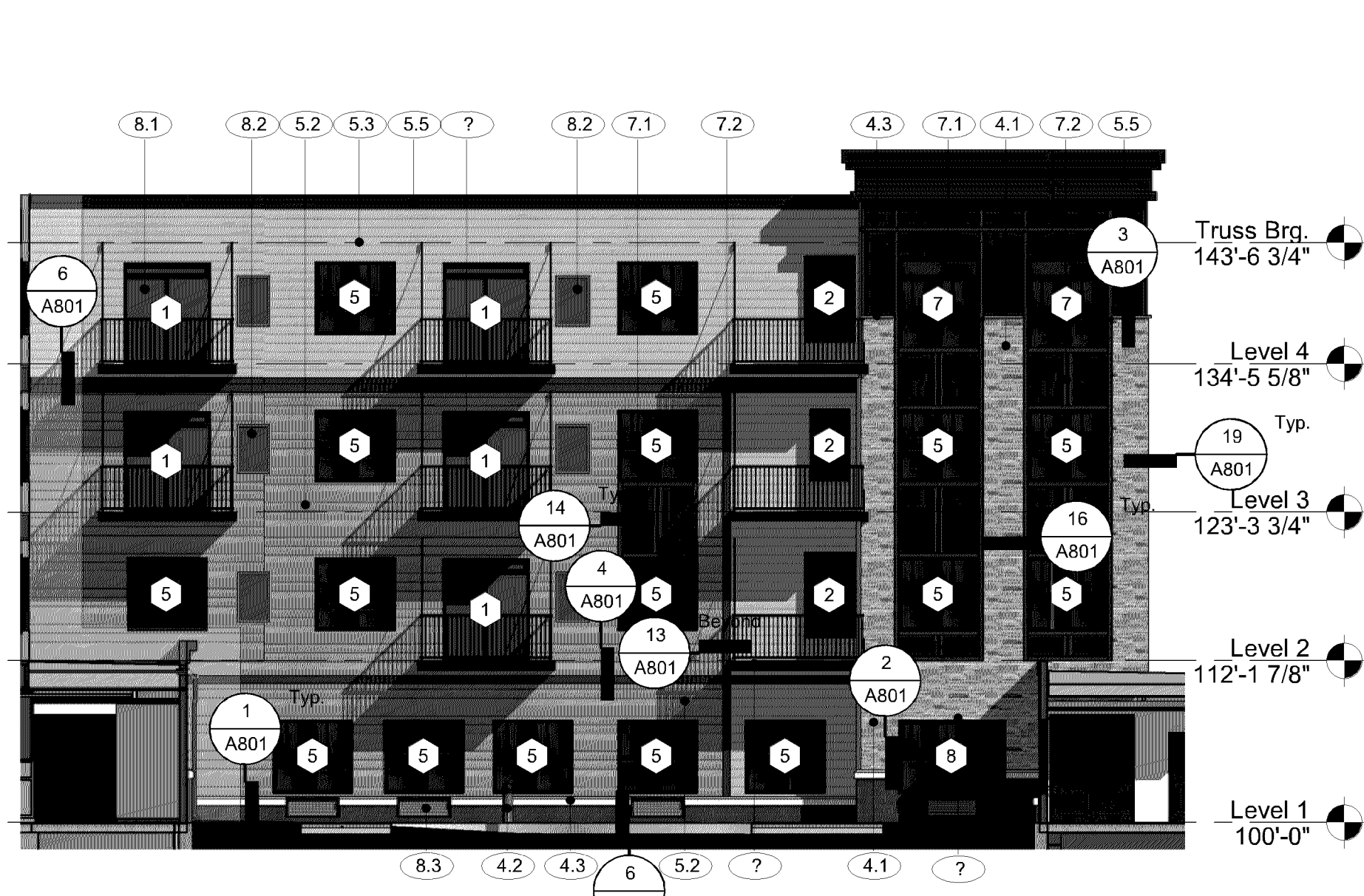
1 Elevation 4 - East
3/32" = 1'-0"



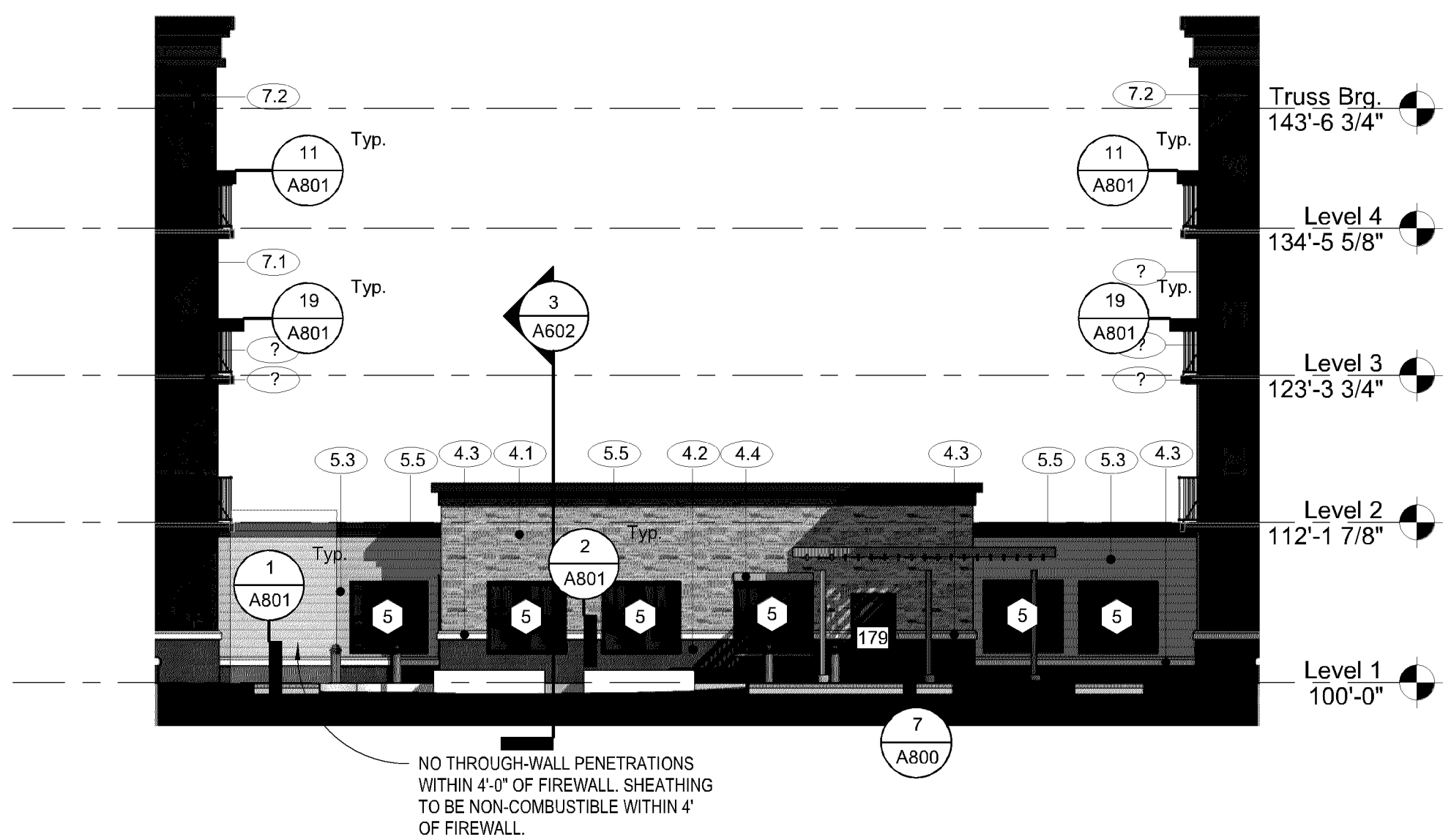
4 Elevation 6 - MC Courtyard South
3/32" = 1'-0"



3 Elevation 7 - MC Courtyard West
3/32" = 1'-0"



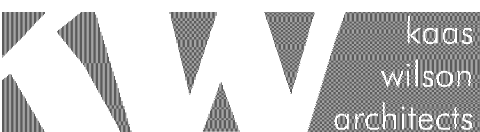
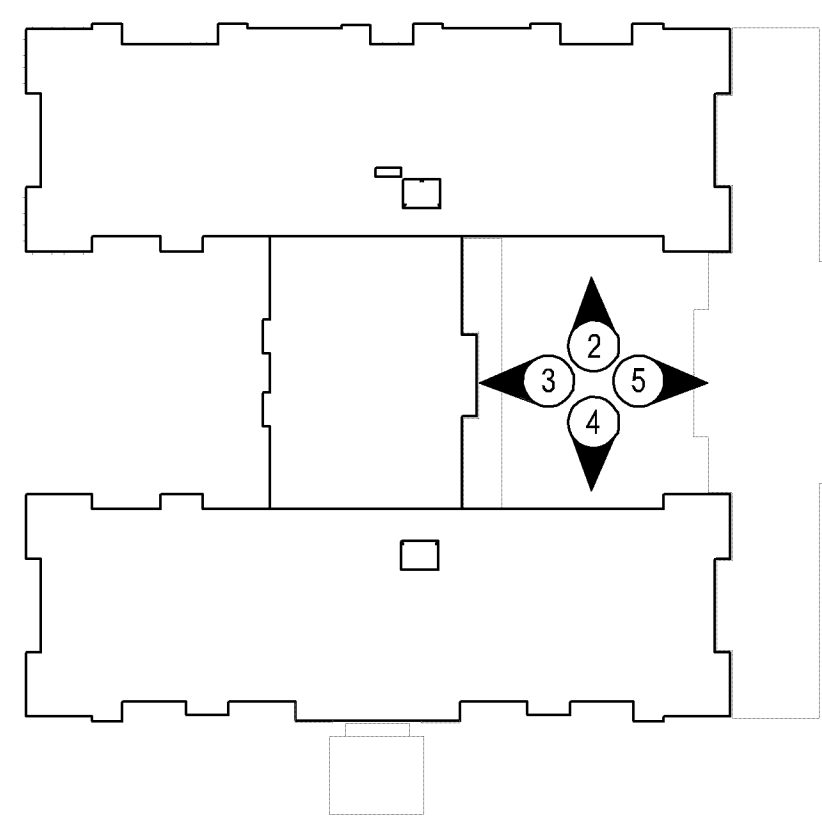
2 Elevation 5 - MC Courtyard North
3/32" = 1'-0"



5 Elevation 8 - MC Courtyard East
3/32" = 1'-0"

- EXTERIOR ELEVATION NOTES
1. SEE DRAWING SHEET A820 FOR WINDOW HEAD, JAMB AND SILL DETAILS.
 2. SEE SHEETS A800-A804 FOR EXTERIOR WALL DETAILS.
 3. ALL DIMENSIONS AT EXTERIOR WALLS ARE TAKEN TO EXTERIOR FACE OF MASONRY AT CMU WALLS OR CENTER OF STLD AT FRAMED WALLS UNLESS NOTED OTHERWISE.
 4. SEE SHEETS A810 FOR INTERIOR AND EXTERIOR WALL TYPES.
 5. PROVIDE CONTROL JOINTS IN CONCRETE MASONRY WALLS EVERY 30'-0" (REGARDLESS IF SHOWN ON ELEVATION OR NOT SHOWN ON ELEVATION).
 6. PROVIDE EXPANSION JOINTS IN BRICKWORK PER THE BRICK INDUSTRY ASSOCIATION TECH NOTES T1184. EXPANSION JOINTS IN CLAY BRICKWORK SHALL BE LOCATED 20 FEET ON CENTER MAX. LOCATED AT CORNERS, OFFSETS AND AT CHANGES IN SUPPORT, MATERIAL, WALL HEIGHT OR CHANGE IN BACK UP SYSTEM.
 7. ALL WINDOWS IN ACMV TO HAVE PRECAST SILLS AND SOLDIER COURSE HEADERS.
 8. FOR VERTICAL JOINTS OF DIS-SIMILAR MATERIALS VERIFY WITH ARCHITECT.
 9. COMPLY WITH FLASHING DETAILS ON SHEETS A840 FOR ROOF DETAILS.
 10. ALL HORIZONTAL TRIM BANDS THAT OCCUR ON THE FACE OF A BAY RETURN BACK TO THE MAIN BODY OF THE BUILDING.
 11. ANY CULTURED STONE LOCATED ABOVE A FLAT OR SLOPING ROOF SURFACE SHALL BE HELD ABOVE THE ROOF SURFACE PER THE MANUFACTURER'S REQUIREMENTS. PROVIDE PREFINISHED METAL FLASHING BELOW CULTURED STONE. COLOR TO BE SELECTED BY ARCHITECT.
 12. ALL OUTSIDE CORNERS AT CFB PANEL SIDING SHALL RECEIVE VERTICAL CORNER BOARDS. BOTH SIDES OF CORNER. SEE A801.
 13. CMU PRECAST SILL TO OCCUR AT ALL CMU TO CFB TRANSITIONS.
 14. JOINTS OF ALL STONE SILLS SHALL BE RAKED AND FILLED W/ COLOR MATCHED SEALANT.
 15. WHERE CMU FOUNDATION (OR VENEER) IS EXPOSED ABOVE GRADE, IT SHALL BE COLORED ARCHITECTURAL CMU. COLOR TO BE SELECTED BY ARCHITECT.
 16. DOWN SPOUTS SHALL CONNECT TO STORM SEWER SYSTEM TYPICAL. SEE CIVIL DRAWINGS.

- EXTERIOR MATERIALS TAG KEY
- 4.1 ENVIRONMENTAL STONE WORKS ACMV - COLOR: TBD
 - 4.2 COLORED CMU ROCKFACE VENEER - COLOR: TBD
 - 4.3 SOLID CMU SILL - COLOR: TBD
 - 4.4 CAST STONE LINTEL - COLOR: TBD
 - 4.5 CAST STONE BANDING - COLOR: TBD
 - 5.1 ALUMINUM BALCONY & RAILINGS - COLOR: TBD
 - 5.2 8" EDCO ENTEK LAP SIDING - WOOD GRAIN - COLOR: 1. TBD
 - 5.3 4" DOUBLE EDCO ENTEK LAP SIDING - WOOD GRAIN - COLOR: 2. TBD
 - 5.5 PREFINISHED METAL COPING - COLOR: TBD
 - 7.1 HARDIE PANEL SIDING - STUCCO TEXTURE - COLOR: TBD
 - 7.2 TRIM - COLOR: TBD
 - 8.1 GLAZING - COLOR: TBD
 - 8.2 MAGIC PAK GRILL - COLOR: TBD
 - 8.3 PTAC GRILL - COLOR: TBD
 - 26.1 EXTERIOR LIGHTING - COLOR: BLACK
- PROVIDE DRY SPRINKLER HEADS AT COMBUSTIBLE BALCONIES. NON-COMBUSTIBLE BALCONIES DO NOT REQUIRE SPRINKLERS PER 8.16.7.2 OF NFPA 13.



1301 American Blvd E.
Suite 100
Bloomington, MN 55425
tel: (612) 879-6000
fax: (612) 879-6666
www.kosswilson.com

Civil/Landscape:
Civil Site Group
4931 W. 35th St. Suite 200
St. Louis Park, MN 55416
P: (612) 615-0060

Structural:
BKM Engineers
6120 Earle Brown Drive, Suite
700
Minneapolis, MN 55430
P: (763) 843-0420

MEP:
Design Build

General Contractor:
Weiss Builders Inc
7645 Lyndale Ave S, Suite
300
Minneapolis, MN 55423
P: (612) 243-5000

Project:
Cherrywood Pointe of Bloomington
5501 American Boulevard W.
Bloomington, MN 55407

Owner:
United Properties
651 Nicollet Mall Suite 450 Minneapolis, MN 55402

Project Number 17058

Date 8.7.19 - Permit Set

I HEREBY CERTIFY THAT THIS PLAN, SPECIFICATION OR REPORT WAS PREPARED UNDER MY DIRECT SUPERVISION AND THAT I AM A REGISTERED ARCHITECT UNDER THE LAWS OF THE STATE OF MINNESOTA.

LINK WILSON REG. NO. 21629

Date 08.29.19

10.31.19

Revision

Added #01

ASD #01

Rev. No.

2

Exterior
Elevations

As indicated

A501