

LANDSCAPE NOTES:

- WHERE SHOWN, SHRUB & PERENNIAL BEDS SHALL BE MULCHED WITH 4" DEPTH (MINIMUM AFTER INSTALLATION AND/OR TOP DRESSING OPERATIONS) OF SHREDDED CYPRESS MULCH.
- ALL TREES SHALL BE MULCHED WITH SHREDDED CYPRESS MULCH TO OUTER EDGE OF SAUCER OR TO EDGE OF PLANTING BED, IF APPLICABLE. ALL MULCH SHALL BE KEPT WITHIN A MINIMUM OF 2" FROM TREE TRUNK.
- IF SHOWN ON PLAN, RANDOM SIZED LIMESTONE BOULDERS COLOR AND SIZE TO COMPLEMENT NEW LANDSCAPING. OWNER TO APPROVE BOULDER SAMPLES PRIOR TO INSTALLATION.
- PLANT MATERIALS SHALL CONFORM WITH THE AMERICAN ASSOCIATION OF NURSERYMEN STANDARDS AND SHALL BE OF HARDY STOCK, FREE FROM DISEASE, DAMAGE AND DISFIGURATION. CONTRACTOR IS RESPONSIBLE FOR MAINTAINING PLUMPNESS OF PLANT MATERIAL FOR DURATION OF ACCEPTANCE PERIOD.
- UPON DISCOVERY OF A DISCREPANCY BETWEEN THE QUANTITY OF PLANTS SHOWN ON THE SCHEDULE AND THE QUANTITY SHOWN ON THE PLAN, THE PLAN SHALL GOVERN.
- CONDITION OF VEGETATION SHALL BE MONITORED BY THE LANDSCAPE ARCHITECT THROUGHOUT THE DURATION OF THE CONTRACT. LANDSCAPE MATERIALS PART OF THE CONTRACT SHALL BE WARRANTED FOR ONE (1) FULL GROWING SEASONS FROM SUBSTANTIAL COMPLETION DATE.
- ALL AREAS DISTURBED BY CONSTRUCTION ACTIVITIES SHALL RECEIVE 4" LAYER TOPSOIL LOAM AND SOD AS SPECIFIED UNLESS OTHERWISE NOTED ON THE DRAWINGS.
- COORDINATE LOCATION OF VEGETATION WITH UNDERGROUND AND OVERHEAD UTILITIES. LIGHTING FIXTURES, DOORS AND WINDOWS. CONTRACTOR SHALL STAKE IN THE FIELD FINAL LOCATION OF TREES AND SHRUBS FOR REVIEW AND APPROVAL BY THE LANDSCAPE ARCHITECT PRIOR TO INSTALLATION.
- ALL PLANT MATERIALS SHALL BE WATERED AND MAINTAINED UNTIL ACCEPTANCE.
- REPAIR AT NO COST TO OWNER ALL DAMAGE RESULTING FROM LANDSCAPE CONTRACTOR'S ACTIVITIES.
- SWEEP AND MAINTAIN ALL PAVED SURFACES FREE OF DEBRIS GENERATED FROM LANDSCAPE CONTRACTOR'S ACTIVITIES.
- REPAIR AT NO COST TO THE OWNER IRRIGATION SYSTEM DAMAGED FROM LANDSCAPE CONSTRUCTION ACTIVITIES.
- PROVIDE SITE WIDE IRRIGATION SYSTEM DESIGN AND INSTALLATION. SYSTEM SHALL BE FULLY PROGRAMMABLE AND CAPABLE OF ALTERNATE DATE WATERING. THE SYSTEM SHALL PROVIDE HEAD TO HEAD OR DRIP COVERAGE AND BE CAPABLE OF DELIVERING ONE INCH OF PRECIPITATION PER WEEK. SYSTEM SHALL EXTEND INTO THE PUBLIC RIGHT-OF-WAY TO THE EDGE OF PAVEMENT/BACK OF CURB.
- CONTRACTOR SHALL SECURE APPROVAL OF PROPOSED IRRIGATION SYSTEM INCLUDING PRICING FROM OWNER, PRIOR TO INSTALLATION.

PLANT SCHEDULE - ENTIRE SITE - EAST

SYM	QUANT.	COMMON NAME	BOTANICAL NAME	SIZE	ROOT	COMMENTS
DECIDUOUS & EVERGREEN TREES						
ABM	12	Autumn Blaze Maple	<i>Acer x freemanii 'Jeffersred'</i>	2.5" CAL.	B&B	STRAIGHT LEADER. FULL FORM
BHS	17	BLACK HILLS SPRUCE	<i>Picea glauca 'Densata'</i>	6' HT.	B&B	STRAIGHT LEADER. FULL FORM
KC	9	KENTUCKY COFFEETREE	<i>Gymnocladus dioica</i>	2.5" CAL.	B&B	STRAIGHT LEADER. FULL FORM
NHE	13	New Horizon Elm	<i>Ulmus 'New Horizon'</i>	2.5" CAL.	B&B	STRAIGHT LEADER. FULL FORM
RB	6	RIVER BIRCH	<i>Betula nigra</i>	2.5" CAL.	B&B	STRAIGHT LEADER. FULL FORM
SHL	9	SKYLINE HONEYLOCUST	<i>Gleditsia triacanthos 'Skycole'</i>	2.5" CAL.	B&B	STRAIGHT LEADER. FULL FORM
SWO	5	SWAMP WHITE OAK	<i>Quercus bicolor</i>	2.5" CAL.	B&B	STRAIGHT LEADER. FULL FORM
WP	6	WHITE PINE	<i>Pinus strobus</i>	6' HT.	B&B	STRAIGHT LEADER. FULL FORM
	77	TOTAL				
ORNAMENTAL TREES						
ABS	6	AUTUMN BRILLIANCE SERVICEBERRY	<i>Amelanchier x grandiflora 'Autumn Brilliance (tree form)'</i>	1.5" CAL.	B&B	STRAIGHT LEADER. FULL FORM
NRBc	1	Northern Redbud Clump	<i>Cercis canadensis 'Northern Strain'</i>	#7	CONT.	
RBC	4	RED BARON CRAPAPPLE	<i>Malus 'Red Baron'</i>	1.5" CAL.	B&B	STRAIGHT LEADER. FULL FORM
RDJM	1	Red Dragon Japanese Maple	<i>Acer palmatum 'Red Dragon'</i>	#7	CONT.	
SSC	8	SPRING SNOW CRABAPPLE	<i>Malus 'Spring Snow'</i>	1.5" CAL.	B&B	STRAIGHT LEADER. FULL FORM
	20	TOTAL				
SHRUBS - DECIDUOUS & EVERGREEN						
AFD	2	ARTIC FIRE DOGWOOD	<i>Cornus sericea 'Farrow'</i>	24" HT.	CONT.	
AH	23	ANNABELLE HYDRANGEA	<i>Hydrangea arborescens 'Annabelle'</i>	24" HT.	CONT.	
BLE	5	BLACK LACE ELDERBERRY	<i>Sambucus nigra 'Eva'</i>	24" HT.	CONT.	
BSP	3	BEAUVIRONENSIS SCOTCH PINE	<i>Pinus sylvestris 'Beauvironensis'</i>	24" HT.	CONT.	
CCAC	4	COMPACT AMERICAN CRANBERRY	<i>Viburnum trilobum 'Bailey Compact'</i>	24" HT.	CONT.	
DKL	35	DWARF KOREAN LILAC	<i>Syringa meyeri 'Palibin'</i>	24" HT.	CONT.	
MD	3	MEDORA JUNIPER	<i>Juniperus scopulorum 'Medora'</i>	36" HT.	CONT.	
NCB	5	Northern Charm Boxwood	<i>Buxus 'Wilson'</i>	24" HT.	CONT.	
NY	18	Nova Yew	<i>Taxus cuspidata 'Nova'</i>	24" HT.	CONT.	
RC	7	Russian Cypress	<i>Microbiota decussata</i>	24" SPD.	CONT.	
RLA	10	ROSY LIGHTS AZALEA	<i>Rhododendron 'Rosy Lights'</i>	24" HT.	CONT.	
SGJ	9	Sea Green Juniper	<i>Juniperus chinensis 'Sea Green'</i>	18" HT.	CONT.	
TSH	25	Twist And Shout Hydrangea	<i>Hydrangea macrophylla 'PIIHM-I'</i>	24" HT.	CONT.	
TY	37	TAUNTON'S YEW	<i>Taxus x media 'Tauntonii'</i>	24" HT.	CONT.	
	187	TOTAL				

SYM	QUANT.	COMMON NAME	BOTANICAL NAME	SIZE	ROOT	COMMENTS
PERENNIALS & GRASSES						
AJS	53	AUTUMN JOY SEDUM	<i>Calamagrostis x acutiflora 'Karl Foerster'</i>	#1	CONT.	
BES	26	Goldsturm Rudbeckia	<i>Rudbeckia fulgida 'Goldsturm'</i>	#1	CONT.	
FG	21	Flame Grass	<i>Miscanthus sinensis 'Purpurascens'</i>	#1	CONT.	
HGVG	37	Hakonechloa Golden Variegated Grass	<i>Hakonechloa macro 'Aureola'</i>	#1	CONT.	
LRL	14	Little Rocket	<i>Ligularia 'Little Rocket'</i>	#1	CONT.	
MA	15	Montgomery Astilbe	<i>Astilbe japonica 'Montgomery'</i>	#1	CONT.	
MFG	96	MEXICAN FEATHER GRASS	<i>Stipa tenuissima 'Pony Tails'</i>	#1	CONT.	
OF	8	Ostrich Fern	<i>Matteuccia struthiopteris</i>	#1	CONT.	
PBA	13	Peach Blossom Astilbe	<i>Astilbe x rosea 'Peach Blossom'</i>	#1	CONT.	
PC	40	Deutschland Astilbe	<i>Astilbe japonica 'Deutschland'</i>	#1	CONT.	
PMD	65	PARDON ME DAYLILLY	<i>Hemerocallis 'Pardon Me'</i>	#1	CONT.	
PPCB	36	Plum Pudding Coral Bells	<i>Heuchera 'Plum Pudding'</i>	#1	CONT.	
RA	9	Rhineland Astilbe	<i>Astilbe japonica 'Rheinland'</i>	#1	CONT.	
SDB	14	Stella D'Oro Daylily	<i>Hemerocallis 'Stella D'Oro'</i>	#1	CONT.	
SSD	61	Stella Supreme Daylily	<i>Hemerocallis 'Stella Supreme'</i>	#1	CONT.	
VWA	26	Visions In White Astilbe	<i>Astilbe 'Visions In White'</i>	#1	CONT.	
	528	TOTAL				
	132	TOTAL AS SHRUBS 1:4				

TREE SUMMARY	
62	TREES REQUIRED
77	TREES PROVIDED
15	ADDITIONAL PLANTED ON WEST SITE AS PART OF THIS PROJECT
62	ADJUSTED TREES PROVIDED - EAST SIDE ONLY

SHRUB SUMMARY	
356	SHRUBS REQUIRED
319	SHRUBS PROVIDED (INCLUDES PERENNIALS CONVERTED TO SHRUB COUNT, SEE TABLE)

LANDSCAPE CALCULATIONS:

LANDSCAPE CALCULATIONS	
WEST LOT	
ONE TREE REQUIRED / 2,500 SF OF LANDSCAPE AREA	
159,826 / 2,500 =	64
ONE SHRUB REQUIRED / 1,000 SF OF LANDSCAPE AREA	
159,826 / 1,000 =	160
PRESERVED TREES	5
NEW TREE TOTAL	59
EAST LOT (DEVELOPABLE AREA ADJUSTED TO NOT INCLUDE FUTURE R.O.W. DEDICATION)	
ONE TREE REQUIRED / 2,500 SF OF LANDSCAPE AREA	
155,158 / 2,500 =	63
ONE SHRUB REQUIRED / 1,000 SF OF LANDSCAPE AREA	
155,158 / 1,000 =	156
PRESERVED TREES	1
NEW TREE TOTAL	62
TOTAL FOR THE 2 SITES	
TREES	121
SHRUBS	316

LEGEND

- SEED TYPE 1 - MNDOT 34-262 WET PRAIRIE, PER MNDOT SEEDING MANUAL SPECIFICATIONS (2014)
- SEED TYPE 2 - MNDOT 35-221 DRY PRAIRIE GENERAL, PER MNDOT SEEDING MANUAL SPECIFICATIONS (2014)
- 1" DIA. DECORATIVE ROCK MAINTENANCE STRIP OVER FILTER FABRIC, SAMPLES REQUIRED. PROVIDE EDGING AS SHOWN ON PLAN
- 1" DIA. DECORATIVE ROCK MULCH, SAMPLES REQUIRED PROVIDE EDGING AS SHOWN ON PLAN
- SHREDDED CYPRESS MULCH, SAMPLES REQUIRED PROVIDE EDGING AS SHOWN ON PLAN
- SOD
- PROPOSED CANOPY & EVERGREEN TREE SYMBOLS - SEE SCHEDULE AND PLAN FOR SPECIES AND PLANTING SIZES
- PROPOSED DECIDUOUS AND EVERGREEN SHRUB SYMBOLS - SEE SCHEDULE AND PLAN FOR SPECIES AND PLANTING SIZES
- PROPOSED PERENNIAL PLANT SYMBOLS - SEE SCHEDULE AND PLAN FOR SPECIES AND PLANTING SIZES
- DECORATIVE BOULDERS, 18"-30" DIA.

CivilSite  
GROUP  
4331 W. 35TH ST. SUITE 200  
ST. LOUIS PARK, MN 55416  
CivilSiteGroup.com  
Mart Pavlek 763-213-3944 Pat Sarver 952-293-2003

KAWS  
wilson  
architects

PROJECT

CHERRYWOOD POINTE  
BLOOMINGTON - SENIOR ASSISTED

5601 & 5501 AMERICAN BOULEVARD WEST, BLOOMINGTON, MN, 55437

UNITED PROPERTIES, LLC

3600 AMERICAN BOULEVARD WEST, SUITE 750, BLOOMINGTON, MN 55431

I HEREBY CERTIFY THAT THIS PLAN, SPECIFICATION, OR REPORT WAS PREPARED BY ME OR UNDER MY DIRECT SUPERVISION AND THAT I AM A DULY LICENSED LANDSCAPE ARCHITECT UNDER THE LAWS OF THE STATE OF MINNESOTA.

Patrick J. Sarver  
DATE 09/25/19 LICENSE NO. 24904

ISSUE/SUBMITTAL SUMMARY

DATE	DESCRIPTION
8/20/18	CITY SUBMITTAL
11/21/18	CITY SUBMITTAL
12/5/18	CITY RESUBMITTAL
12/28/18	CITY RESUBMITTAL
7/17/19	WATERSHED SUBMITTAL
7/24/19	CITY SUBMITTAL
08/07/19	BUILDING PERMIT SUBMITTAL
9/17/19	WATERSHED RESUBMITTAL
09/25/19	CITY RESUBMITTAL

REVISION SUMMARY

DATE	DESCRIPTION
12/17/18	PLANT & CALC. REV.
10/31/19	ASI #1

PROJECT NUMBER: 17157

LANDSCAPE PLAN - OVERALL

L1.0

© COPYRIGHT 2018 CIVIL SITE GROUP INC.

PL201900139  
PL2019-139

SEE SHEETS C1.0, C1.1 & C1.2 FOR OVERALL, WEST & EAST  
EXISTING TREES INVENTORY & REMOVALS

811  
Know what's below.  
Call before you dig.

1" = 40'-0"  
20'-0" 0 40'-0"



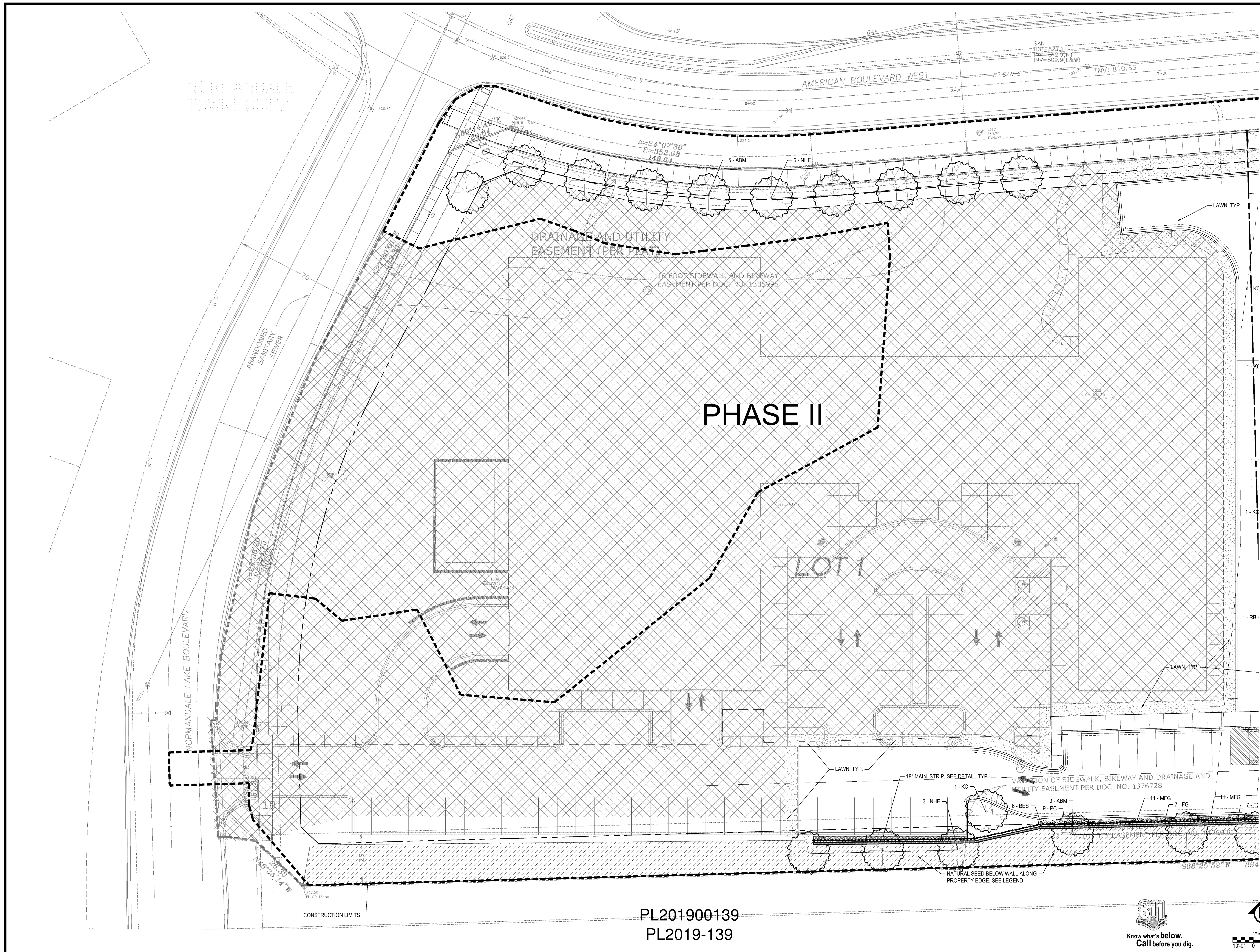
I HEREBY CERTIFY THAT THIS PLAN,  
SPECIFICATION, OR REPORT WAS  
PREPARED BY ME OR UNDER MY DIRECT  
SUPERVISION AND THAT I AM A DULY  
LICENSED LANDSCAPE ARCHITECT UNDER  
THE LAWS OF THE STATE OF MINNESOTA.

ISSUE/SUBMITTAL SUMMARY

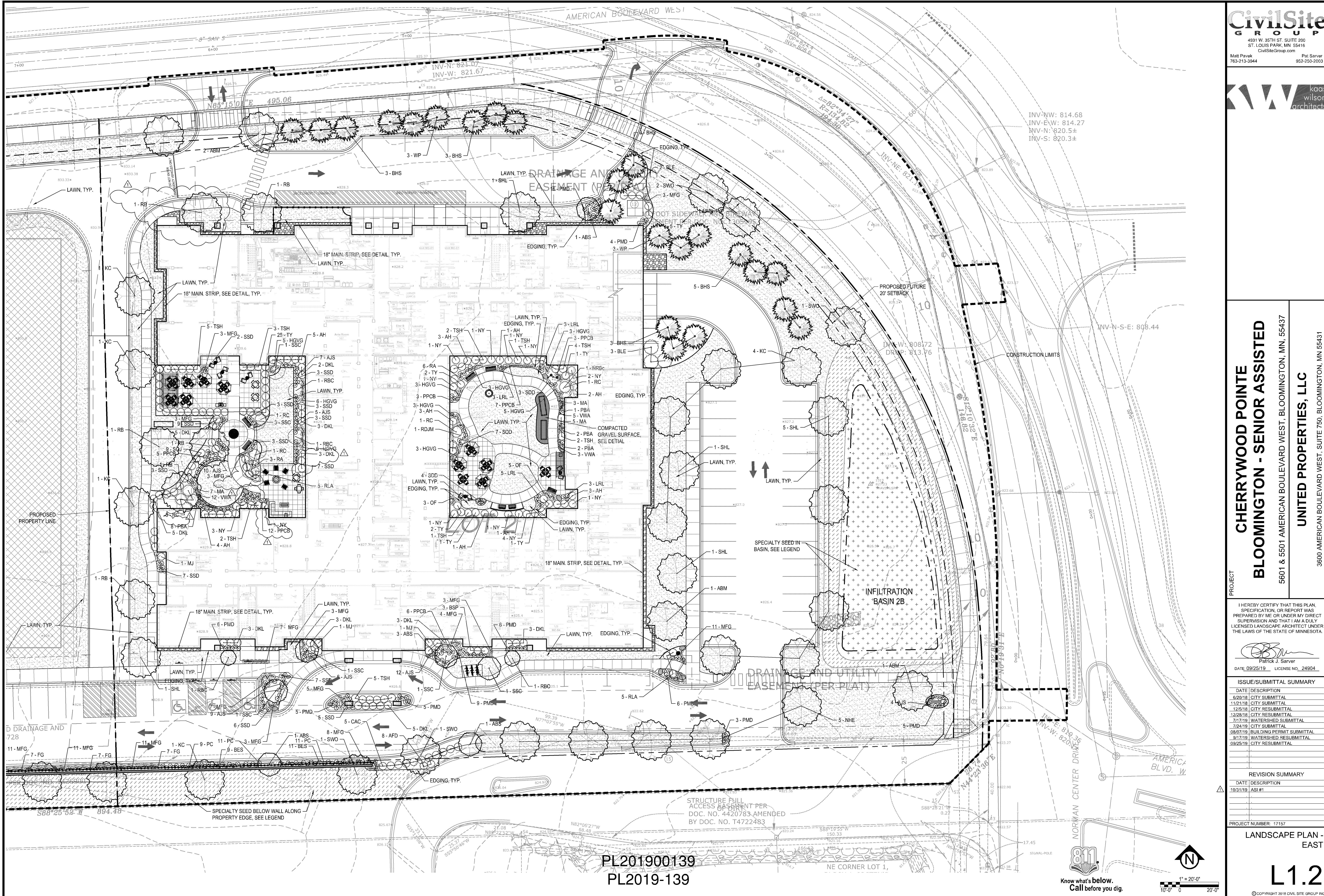
REVISION SUMMARY	
DATE	DESCRIPTION

LANDSCAPE PLAN -  
WEST

## L1.1







**CHERRYWOOD POINTE  
BLOOMINGTON - SENIOR ASSISTED**  
5601 & 5501 AMERICAN BOULEVARD WEST, BLOOMINGTON, MN, 55437  
**UNITED PROPERTIES, LLC**  
3600 AMERICAN BOULEVARD WEST, SUITE 750, BLOOMINGTON, MN 55431

I HEREBY CERTIFY THAT THIS PLAN, SPECIFICATION, OR REPORT WAS PREPARED BY ME OR UNDER MY DIRECT SUPERVISION AND THAT I AM A DULY LICENSED LANDSCAPE ARCHITECT UNDER THE LAWS OF THE STATE OF MINNESOTA.

*Patrick J. Sarver*  
DATE: 09/25/19 LICENSE NO. 24904

ISSUE/SUBMITTAL SUMMARY	
DATE	DESCRIPTION
8/29/19	CITY SUBMITTAL
11/21/19	CITY SUBMITTAL
12/5/19	CITY RESUBMITTAL
12/28/19	CITY RESUBMITTAL
7/7/19	WATERSHED SUBMITTAL
7/24/19	CITY SUBMITTAL
08/07/19	BUILDING PERMIT SUBMITTAL
9/17/19	WATERSHED RESUBMITTAL
09/25/19	CITY RESUBMITTAL

REVISION SUMMARY	
DATE	DESCRIPTION
10/31/19	AS1 #1

PROJECT NUMBER: 17157

**LANDSCAPE PLAN - EAST**

**L1.2**

© COPYRIGHT 2018 CIVIL SITE GROUP INC.







I HEREBY CERTIFY THAT THIS PLAN,  
SPECIFICATION, OR REPORT WAS  
PREPARED BY ME OR UNDER MY DIRECT  
SUPERVISION AND THAT I AM A DULY  
LICENSED PROFESSIONAL ENGINEER  
UNDER THE LAWS OF THE STATE OF  
MINNESOTA.

ISSUE/SUBMITTAL SUMMARY	
DATE	DESCRIPTION
6/20/18	CITY SUBMITTAL
11/21/18	CITY SUBMITTAL
12/5/18	CITY RESUBMITTAL
12/28/18	CITY RESUBMITTAL
7/17/19	WATERSHED SUBMITTAL
7/24/19	CITY SUBMITTAL
08/07/19	BUILDING PERMIT SUBMITTAL
9/17/19	WATERSHED RESUBMITTAL
09/25/19	CITY RESUBMITTAL

DATE	DESCRIPTION
10/31/19	ASI #1

LANDSCAPE PLAN -  
EAST COURTYARD  
ENLARGEMENTS