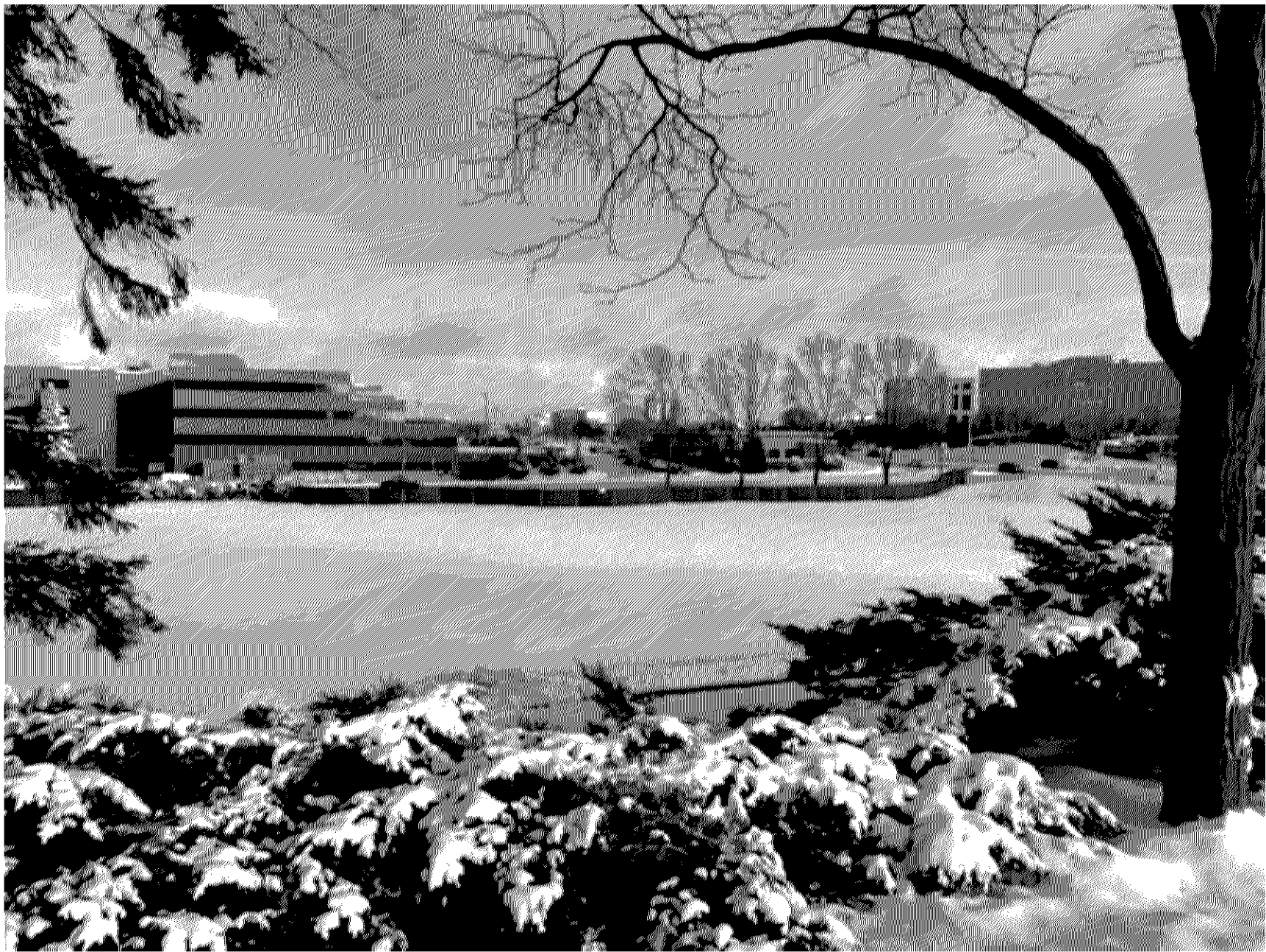


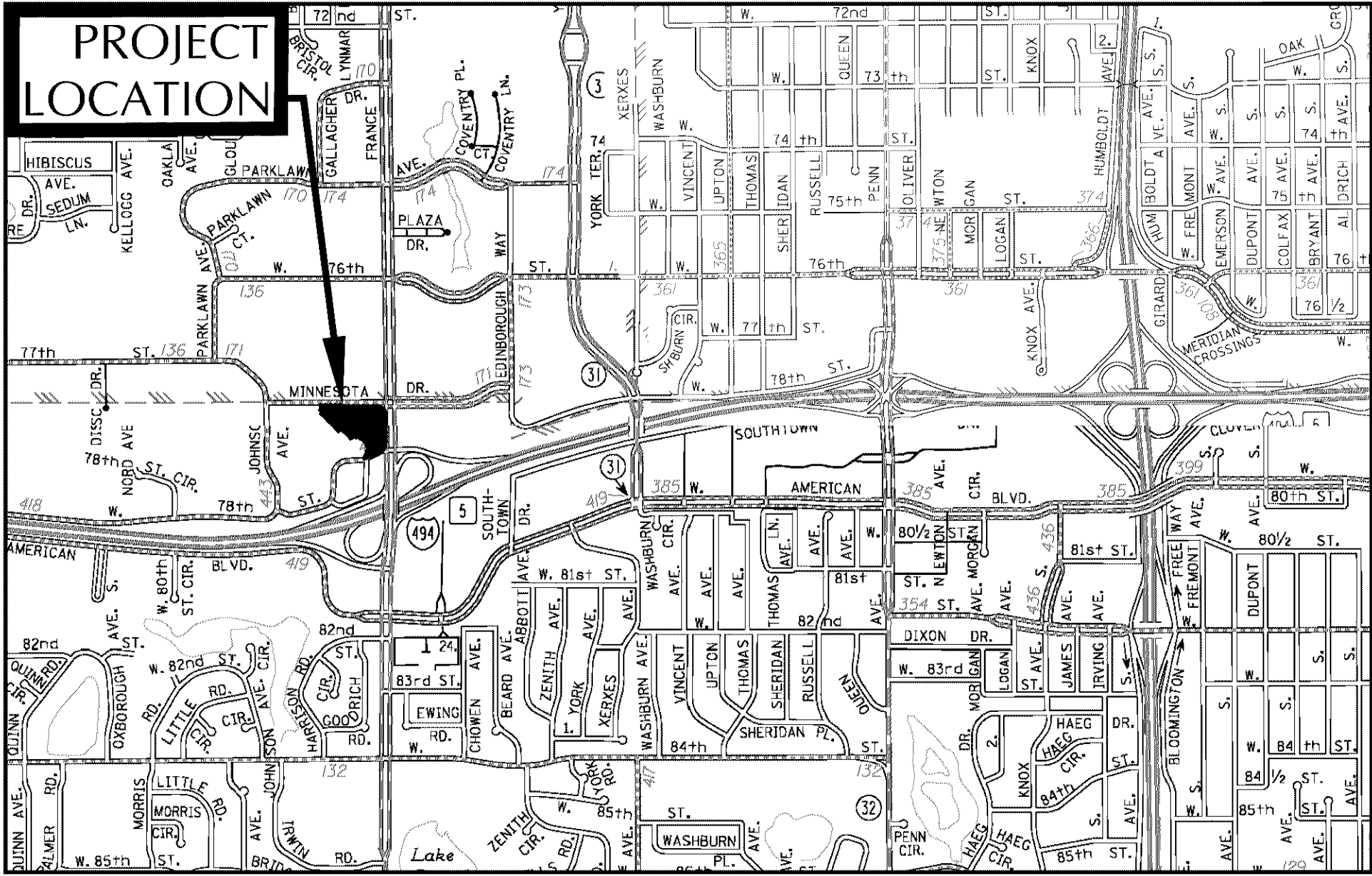
DRURY PLAZA HOTEL

BLOOMINGTON, MN

TEMPORARY PARKING PLANS FOR REVISED FINAL DEVELOPMENT REVIEW



VICINITY MAP



DESIGN CONSULTANTS

OWNER
DRURY SOUTHWEST, INC
101 S. FARRAR DRIVE
CAPE GIRDEAU, MISSOURI 63701

CIVIL ENGINEER
LOUCKS ASSOCIATES
7200 HEMLOCK LANE, SUITE 300
MAPLE GROVE, MINNESOTA 55369

VICKI VANDELL
TEL: 763-424-5505
FAX: 763-424-5822

**DRURY
PLAZA
HOTEL
INTERIM
PARKING LOT**

3901 MINNESOTA DRIVE
BLOOMINGTON, MINNESOTA

Drury Southwest, Inc.

101 S. Farrar Drive
Cape Girardeau, Missouri, 63701

LOUCKS

PLANNING
CIVIL ENGINEERING
LAND SURVEYING
LANDSCAPE ARCHITECTURE
ENVIRONMENTAL

7200 Hemlock Lane, Suite 300
Maple Grove, MN 55369
763.424.5505
www.loucksinc.com

CADD QUALIFICATION	
CADD files prepared by the Consultant for this project are instruments of the Consultant's professional services for use solely with respect to this project. These CADD files shall not be used on other projects for additions to this project, or for completion of this project by others without written approval by the Consultant. With the Consultant's approval, others may be permitted to obtain copies of the CADD drawing files for information and reference only. All intentional or unintentional revisions, additions, or deletions to these CADD files shall be made at the full risk of that party making such revisions, additions or deletions and that party shall hold harmless and indemnify the Consultant from any & all responsibilities, claims, and liabilities.	
SUBMITTAL/REVISIONS	
03/06/20	CLIENT REVIEW /PRICING
04/01/20	REV. FINAL DEV. PLANS

PROFESSIONAL SIGNATURE	
I hereby certify that this plan, specification or report was prepared by me or under my direct supervision and that I am a duly Licensed Professional Engineer under the laws of the State of Minnesota.	
License No.	Vicki J. Van Dell - PE 41352
Date	-
QUALITY CONTROL	
Loucks Project No. 17457.00	
Project Lead	MJV
Drawn By	BL
Checked By	NMM
Reviewed By	-
SHEET INDEX	
C0-1	COVER SHEET
C1-1	EXISTING CONDITIONS PLAN
C2-1	SITE PLAN
C2-2	SITE PLAN OVERLAY
C3-1	GRADING PLAN
C3-2	GRADING PLAN OVERLAY
C8-1	CIVIL DETAILS
SL-1	SITE LIGHTING PLAN

WARNING:

THE CONTRACTOR SHALL BE RESPONSIBLE FOR CALLING FOR LOCATIONS OF ALL EXISTING UTILITIES. THEY SHALL COOPERATE WITH ALL UTILITY COMPANIES IN MAINTAINING THEIR SERVICE AND / OR RELOCATION OF LINES.

THE CONTRACTOR SHALL CONTACT GOPHER STATE ONE CALL AT 651-454-0002 AT LEAST 48 HOURS IN ADVANCE FOR THE LOCATIONS OF ALL UNDERGROUND WIRES, CABLES, CONDUITS, PIPES, MANHOLES, VALVES OR OTHER BURIED STRUCTURES BEFORE DIGGING. THE CONTRACTOR SHALL REPAIR OR REPLACE THE ABOVE WHEN DAMAGED DURING CONSTRUCTION AT NO COST TO THE OWNER.



CALL BEFORE YOU DIG!

Gopher State One Call

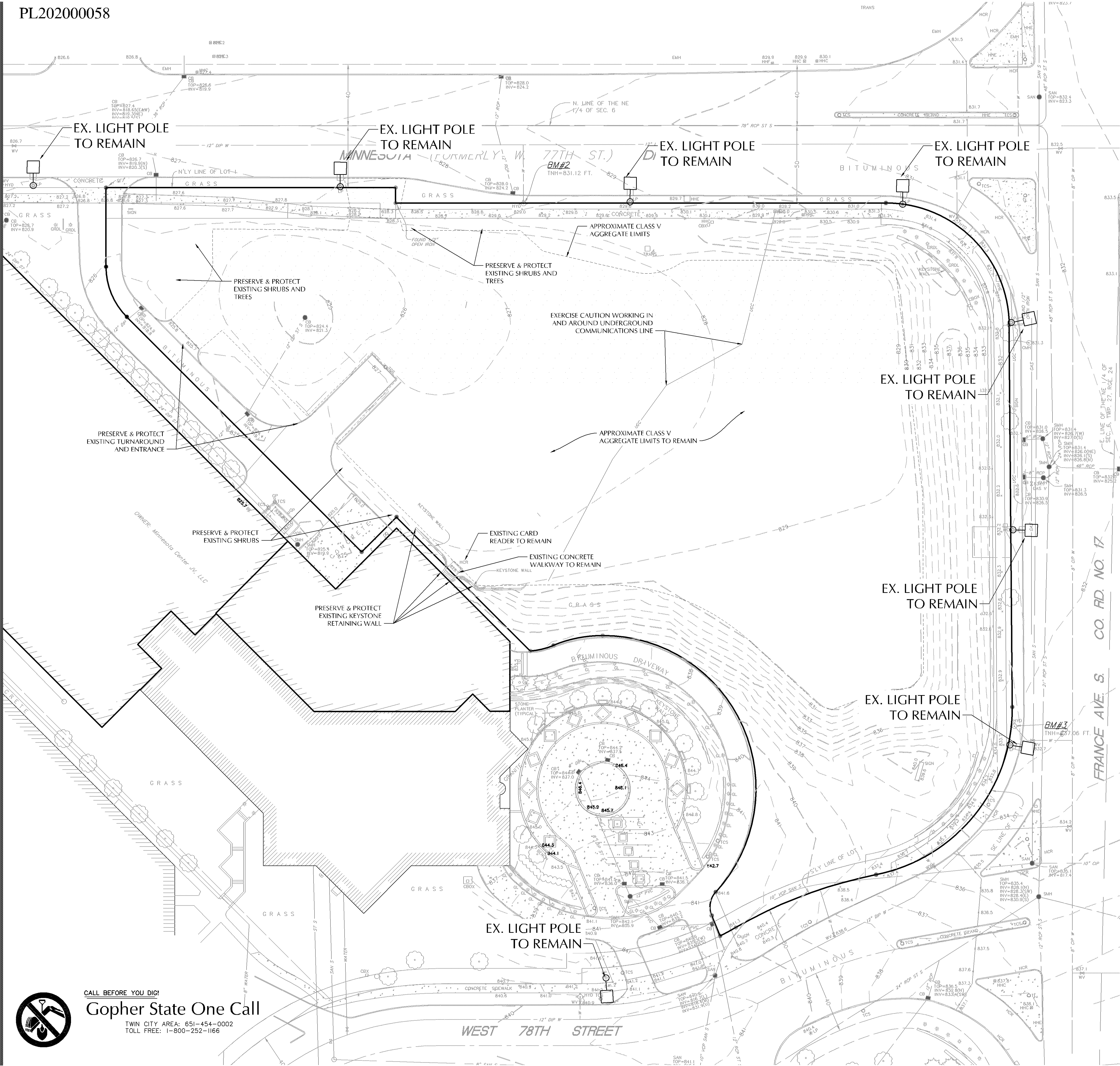
TWIN CITY AREA: 651-454-0002
TOLL FREE: 1-800-252-1166

COVER SHEET

C0-1



CALL BEFORE YOU DIG!
Gopher State One Call
TWIN CITY AREA: 651-454-0002
TOLL FREE: 1-800-252-1166



SITE DEMOLITION NOTES

- 1. CONTRACTOR SHALL PROTECT SURFACE AND SUBSURFACE FEATURES NOT NOTED FOR REMOVAL.

EXISTING CONDITIONS NOTES

- 1. EXISTING SITE IMPROVEMENTS, UTILITIES, AND TOPOGRAPHY PROVIDED BY SUNDE LAND SURVEYING, DATED JULY 24, 2017. LOUCKS DOES NOT GUARANTEE THE ACCURACY, OR COMPLETENESS OF WORK PERFORMED BY OTHERS. CONTRACTOR SHALL FIELD VERIFY SITE CONDITIONS AND NOTIFY THE PROJECT ENGINEER AND PROJECT MANAGER IMMEDIATELY WITH ANY DISCREPANCIES.

PROJECT BENCHMARK

PER SUNDE LAND SURVEY DATED JULY 24, 2017

- 1. TOP OF TOP NUT OF FIRE HYDRANT ON THE SOUTH SIDE OF MINNESOTA DRIVE NEAR MOST NORTHERLY CORNER OF PARKING RAMP. ELEVATION = 829.05 FEET
- 2. TOP OF TOP NUT OF FIRE HYDRANT ON THE SOUTH SIDE OF MINNESOTA DRIVE 300 FEET +/- WEST OF FRANCE AVENUE. ELEVATION = 831.12 FEET
- 3. TOP OF TOP NUT OF FIRE HYDRANT AT NORTHWEST QUADRANT OF FRANCE AVENUE AND WEST 78TH STREET. ELEVATION = 837.06 FEET

WARNING:

THE CONTRACTOR SHALL BE RESPONSIBLE FOR CALLING FOR LOCATIONS OF ALL EXISTING UTILITIES. THEY SHALL COOPERATE WITH ALL UTILITY COMPANIES IN MAINTAINING THEIR SERVICE AND / OR RELOCATION OF LINES.

THE CONTRACTOR SHALL CONTACT GOPHER STATE ONE CALL AT 651-454-0002 AT LEAST 48 HOURS IN ADVANCE FOR THE LOCATIONS OF ALL UNDERGROUND WIRES, CABLES, CONDUITS, PIPES, MANHOLES, VALVES OR OTHER BURIED STRUCTURES BEFORE DIGGING. THE CONTRACTOR SHALL REPAIR OR REPLACE THE ABOVE WHEN DAMAGED DURING CONSTRUCTION AT NO COST TO THE OWNER.

DRURY PLAZA HOTEL INTERIM PARKING LOT
3901 MINNESOTA DRIVE
BLOOMINGTON, MINNESOTA

Drury Southwest, Inc.
101 S. Farrar Drive
Cape Girardeau, Missouri, 63701

LOUCKS
PLANNING
CIVIL ENGINEERING
LAND SURVEYING
LANDSCAPE ARCHITECTURE
ENVIRONMENTAL
7200 Hemlock Lane, Suite 300
Maple Grove, MN 55369
763.424.5505
www.loucksinc.com

CADD QUALIFICATION

CADD files prepared by the Consultant for this project are instruments of the Consultant's professional services for use solely with respect to this project. These CADD files shall not be used on other projects or for completion of this project by others without written approval by the Consultant. With the Consultant's approval, others may be permitted to obtain copies of the CADD drawing files for information and reference only. All intentional or unintentional revisions, additions, or deletions to these CADD files shall be made at the full risk of that party making such revisions, additions or deletions and that party shall hold harmless and indemnify the Consultant from any & all responsibilities, claims, and liabilities.

SUBMITTAL/REVISIONS

03/06/20	CLIENT REVIEW /PRICING
04/01/20	REV. FINAL DEV. PLANS

PROFESSIONAL SIGNATURE

I hereby certify that this plan, specification or report was prepared by me or under my direct supervision and that I am a duly Licensed Professional Engineer under the laws of the State of Minnesota.

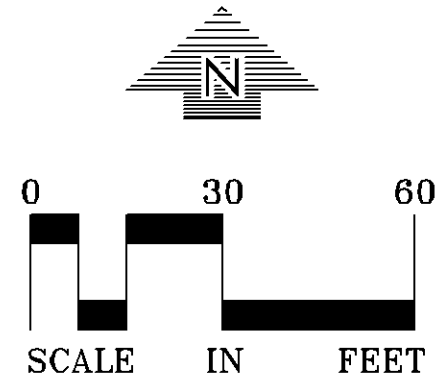
License No.	Vicki J. Van Dell - PE	41352
Date		-

QUALITY CONTROL

Loucks Project No.	17457.00
Project Lead	WJV
Drawn By	BL
Checked By	NMM
Rev	01

SHEET INDEX

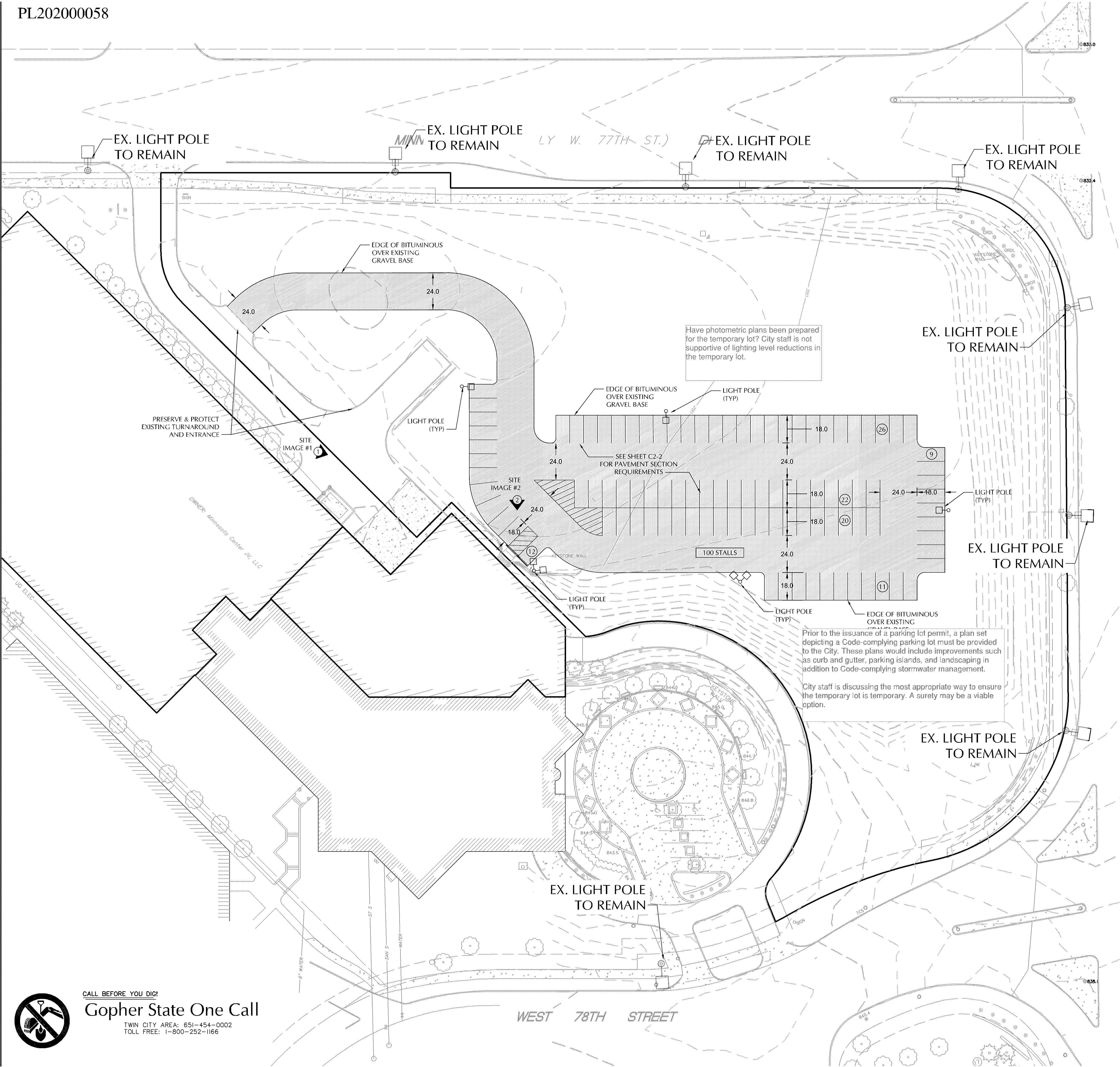
C0-1	COVER SHEET
C1-1	EXISTING CONDITIONS PLAN
C2-1	SITE PLAN
C2-2	SITE PLAN OVERLAY
C3-1	GRADING PLAN
C3-2	GRADING PLAN OVERLAY
C8-1	CIVIL DETAILS
SL-1	SITE LIGHTING PLAN



EXISTING CONDITIONS AND DEMO PLAN
C1-1



CALL BEFORE YOU DIG!
Gopher State One Call
TWIN CITY AREA: 651-454-0002
TOLL FREE: 1-800-252-1166



SITE NOTES

1. TYPICAL FULL SIZED PARKING SPACE IS 9' X 18' UNLESS OTHERWISE NOTED.
2. CONTRACTOR SHALL BE RESPONSIBLE FOR ALL STRIPING AS SHOWN ON PLANS.

EXISTING CONDITIONS NOTES

1. EXISTING SITE IMPROVEMENTS, UTILITIES, AND TOPOGRAPHY PROVIDED BY SUNDE LAND SURVEYING, DATED JULY 24, 2017. LOUCKS DOES NOT GUARANTEE THE ACCURACY, OR COMPLETENESS OF WORK PERFORMED BY OTHERS. CONTRACTOR SHALL FIELD VERIFY SITE CONDITIONS AND NOTIFY THE PROJECT ENGINEER AND PROJECT MANAGER IMMEDIATELY WITH ANY DISCREPANCIES.

PROJECT BENCHMARK

PER SUNDE LAND SURVEY DATED JULY 24, 2017

1. TOP OF TOP NUT OF FIRE HYDRANT ON THE SOUTH SIDE OF MINNESOTA DRIVE NEAR MOST NORTHERLY CORNER OF PARKING RAMP. ELEVATION = 829.05 FEET
2. TOP OF TOP NUT OF FIRE HYDRANT ON THE SOUTH SIDE OF MINNESOTA DRIVE 300 FEET +/- WEST OF FRANCE AVENUE. ELEVATION = 831.12 FEET
3. TOP OF TOP NUT OF FIRE HYDRANT AT NORTHWEST QUADRANT OF FRANCE AVENUE AND WEST 78TH STREET. ELEVATION = 837.06 FEET

WARNING:

THE CONTRACTOR SHALL BE RESPONSIBLE FOR CALLING FOR LOCATIONS OF ALL EXISTING UTILITIES. THEY SHALL COOPERATE WITH ALL UTILITY COMPANIES IN MAINTAINING THEIR SERVICE AND / OR RELOCATION OF LINES.

THE CONTRACTOR SHALL CONTACT GOPHER STATE ONE CALL AT 651-454-0002 AT LEAST 48 HOURS IN ADVANCE FOR THE LOCATIONS OF ALL UNDERGROUND WIRES, CABLES, CONDUITS, PIPES, MANHOLES, VALVES OR OTHER BURIED STRUCTURES BEFORE DIGGING. THE CONTRACTOR SHALL REPAIR OR REPLACE THE ABOVE WHEN DAMAGED DURING CONSTRUCTION AT NO COST TO THE OWNER.

SITE IMAGES

#1) EXISTING LOADING DOCK - MINNESOTA CENTER



#2) EXISTING RETAINING WALL / PEDESTRIAN ENTRANCE - MINNESOTA CENTER



DRURY PLAZA HOTEL INTERIM PARKING LOT
3901 MINNESOTA DRIVE
BLOOMINGTON, MINNESOTA

Drury Southwest, Inc.
101 S. Farrar Drive
Cape Girardeau, Missouri, 63701

LOUCKS
PLANNING
CIVIL ENGINEERING
LAND SURVEYING
LANDSCAPE ARCHITECTURE
ENVIRONMENTAL
7200 Hemlock Lane, Suite 300
Maple Grove, MN 55369
763.424.5505
www.loucksinc.com

CADD QUALIFICATION
CADD files prepared by the Consultant for this project are instruments of the Consultant's professional services for use solely with respect to this project. These CADD files shall not be used on other projects, for additions to this project, or for completion of this project by others without written approval by the Consultant. With the Consultant's approval, others may be permitted to obtain copies of the CADD drawing files for information and reference only. All intentional or unintentional revisions, additions, or deletions to these CADD files shall be made at the full risk of that party making such revisions, additions or deletions and that party shall hold harmless and indemnify the Consultant from any & all responsibilities, claims, and liabilities.

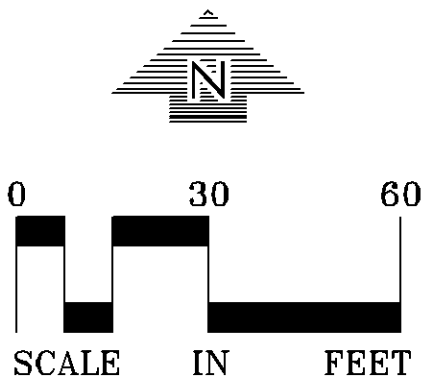
SUBMITTAL/REVISIONS
03/06/20 CLIENT REVIEW /PRICING
04/01/20 REV. FINAL DEV. PLANS

PROFESSIONAL SIGNATURE
I hereby certify that this plan, specification or report was prepared by me or under my direct supervision and that I am a duly Licensed Professional Engineer under the laws of the State of Minnesota.

License No. Vicki J. Van Dell - PE 41352
Date -

QUALITY CONTROL
Loecks Project No. 17457.00
Project Lead JLV
Drawn By JLV
Checked By NM
Reviewed By NM
NOT FOR CONSTRUCTION

SHEET INDEX	
C0-1	COVER SHEET
C1-1	EXISTING CONDITIONS PLAN
C2-1	SITE PLAN
C2-2	SITE PLAN OVERLAY
C3-1	GRADING PLAN
C3-2	GRADING PLAN OVERLAY
C8-1	CIVIL DETAILS
SL-1	SITE LIGHTING PLAN



SITE PLAN C2-1



TWIN CITY AREA: 651-454-0002
TOLL FREE: 1-800-252-1166

C22

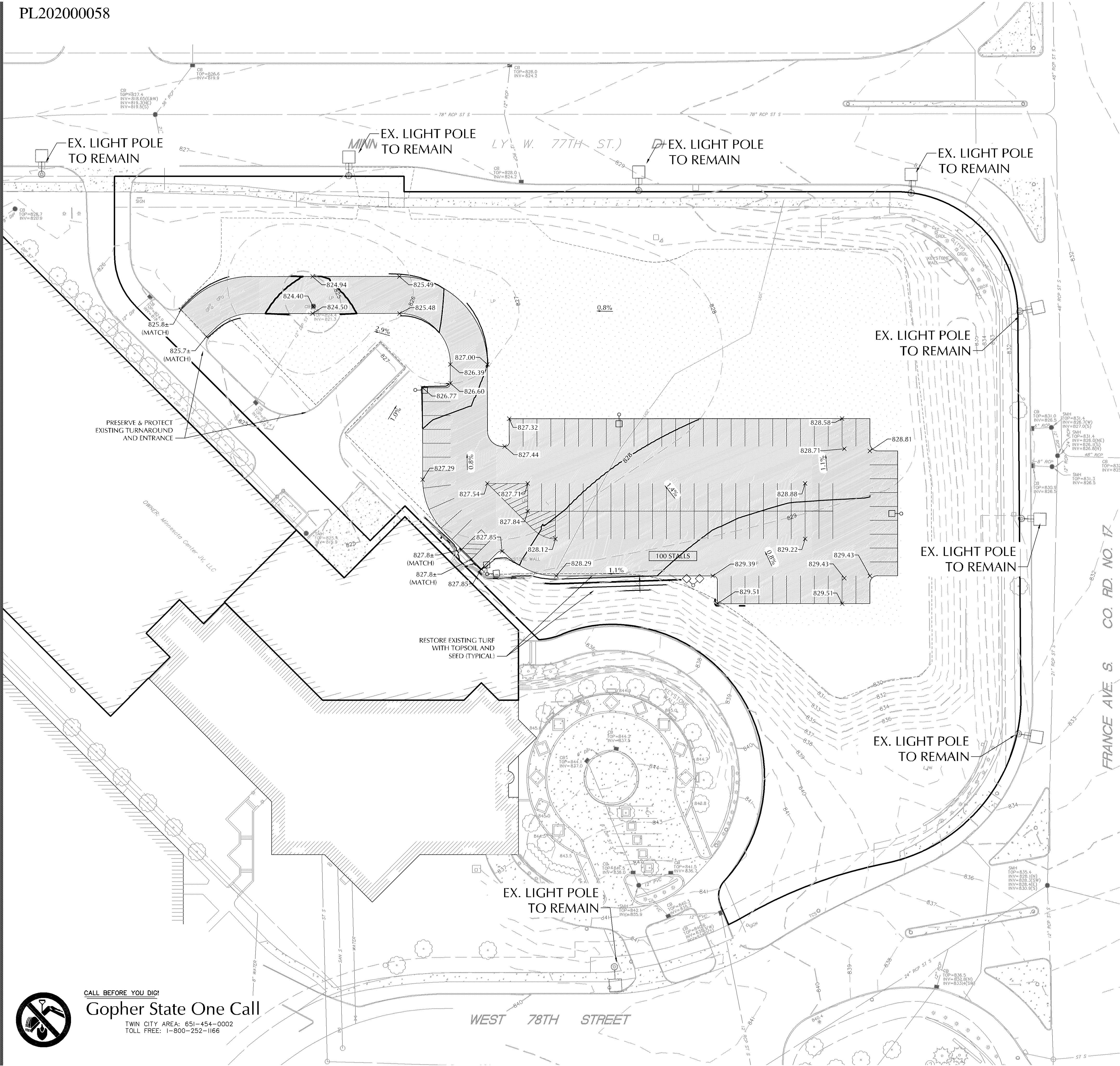
C2-2



CALL BEFORE YOU DIG!

Gopher State One Call

TWIN CITY AREA: 651-454-0002
TOLL FREE: 1-800-252-1166



GRADING, DRAINAGE & EROSION CONTROL NOTES

1. SPOT ELEVATIONS REPRESENT FINISHED SURFACE GRADES, GUTTER/FLOW LINE, OR EDGE OF PAVEMENT UNLESS OTHERWISE NOTED.
2. STREETS MUST BE CLEANED AND SWEEPED WHENEVER TRACKING OF SEDIMENTS OCCURS.
3. DUST MUST BE ADEQUATELY CONTROLLED.

EXISTING CONDITIONS NOTES

1. EXISTING SITE IMPROVEMENTS, UTILITIES, AND TOPOGRAPHY PROVIDED BY SUNDE LAND SURVEYING, DATED JULY 24, 2017. LOUCKS DOES NOT GUARANTEE THE ACCURACY, OR COMPLETENESS OF WORK PERFORMED BY OTHERS. CONTRACTOR SHALL FIELD VERIFY SITE CONDITIONS AND NOTIFY THE PROJECT ENGINEER AND PROJECT MANAGER IMMEDIATELY WITH ANY DISCREPANCIES.

PROJECT BENCHMARK

PER SUNDE LAND SURVEY DATED JULY 24, 2017

1. TOP OF TOP NUT OF FIRE HYDRANT ON THE SOUTH SIDE OF MINNESOTA DRIVE NEAR MOST NORTHERLY CORNER OF PARKING RAMP.
ELEVATION = 829.05 FEET
2. TOP OF TOP NUT OF FIRE HYDRANT ON THE SOUTH SIDE OF MINNESOTA DRIVE 300 FEET +/- WEST OF FRANCE AVENUE.
ELEVATION = 831.12 FEET
3. TOP OF TOP NUT OF FIRE HYDRANT AT NORTHWEST QUADRANT OF FRANCE AVENUE AND WEST 78TH STREET.
ELEVATION = 837.06 FEET

WARNING:

THE CONTRACTOR SHALL BE RESPONSIBLE FOR CALLING FOR LOCATIONS OF ALL EXISTING UTILITIES. THEY SHALL COOPERATE WITH ALL UTILITY COMPANIES IN MAINTAINING THEIR SERVICE AND / OR RELOCATION OF LINES.

THE CONTRACTOR SHALL CONTACT GOPHER STATE ONE CALL AT 651-454-0002 AT LEAST 48 HOURS IN ADVANCE FOR THE LOCATIONS OF ALL UNDERGROUND WIRES, CABLES, CONDUITS, PIPES, MANHOLES, VALVES OR OTHER BURIED STRUCTURES BEFORE DIGGING. THE CONTRACTOR SHALL REPAIR OR REPLACE THE ABOVE WHEN DAMAGED DURING CONSTRUCTION AT NO COST TO THE OWNER.

DRURY
PLAZA
HOTEL
INTERIM
PARKING LOT

3901 MINNESOTA DRIVE
BLOOMINGTON, MINNESOTA

Drury Southwest, Inc.

101 S. Farrar Drive
Cape Girardeau, Missouri, 63701

LOUCKS

PLANNING
CIVIL ENGINEERING
LAND SURVEYING
LANDSCAPE ARCHITECTURE
ENVIRONMENTAL

7200 Hemlock Lane, Suite 300
Maple Grove, MN 55369
763.424.5505
www.loucksinc.com

CADD QUALIFICATION

CADD files prepared by the Consultant for this project are instruments of the Consultant's professional services for use solely with respect to this project. These CADD files shall not be used on other projects or for additions to this project, or for completion of this project by others without written approval by the Consultant. With the Consultant's approval, others may be permitted to obtain copies of the CADD drawing files for information and reference only. All intentional or unintentional revisions, additions, or deletions to these CADD files shall be made at the full risk of that party making such revisions, additions or deletions and that party shall hold harmless and indemnify the Consultant from any & all responsibilities, claims, and liabilities.

SUBMITTAL/REVISIONS

03/06/20 CLIENT REVIEW /PRICING
04/01/20 REV. FINAL DEV. PLANS

PROFESSIONAL SIGNATURE

I hereby certify that this plan, specification or report was prepared by me or under my direct supervision and that I am a duly Licensed Professional Engineer under the laws of the State of Minnesota.

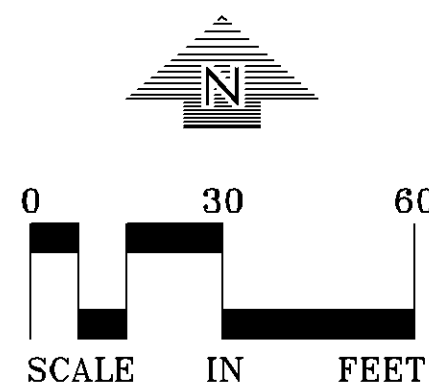
License No. Vicki J. Van Dell - PE 41352
Date -

QUALITY CONTROL

Loucks Project No. 17457.00
Project Lead MIV
Drawn By MIV
Checked By NMIM
Reviewed By NMIM

SHEET INDEX

C0-1	COVER SHEET
C1-1	EXISTING CONDITIONS PLAN
C2-1	SITE PLAN
C2-2	SITE PLAN OVERLAY
C3-1	GRADING PLAN
C3-2	GRADING PLAN OVERLAY
C8-1	CIVIL DETAILS
SL-1	SITE LIGHTING PLAN



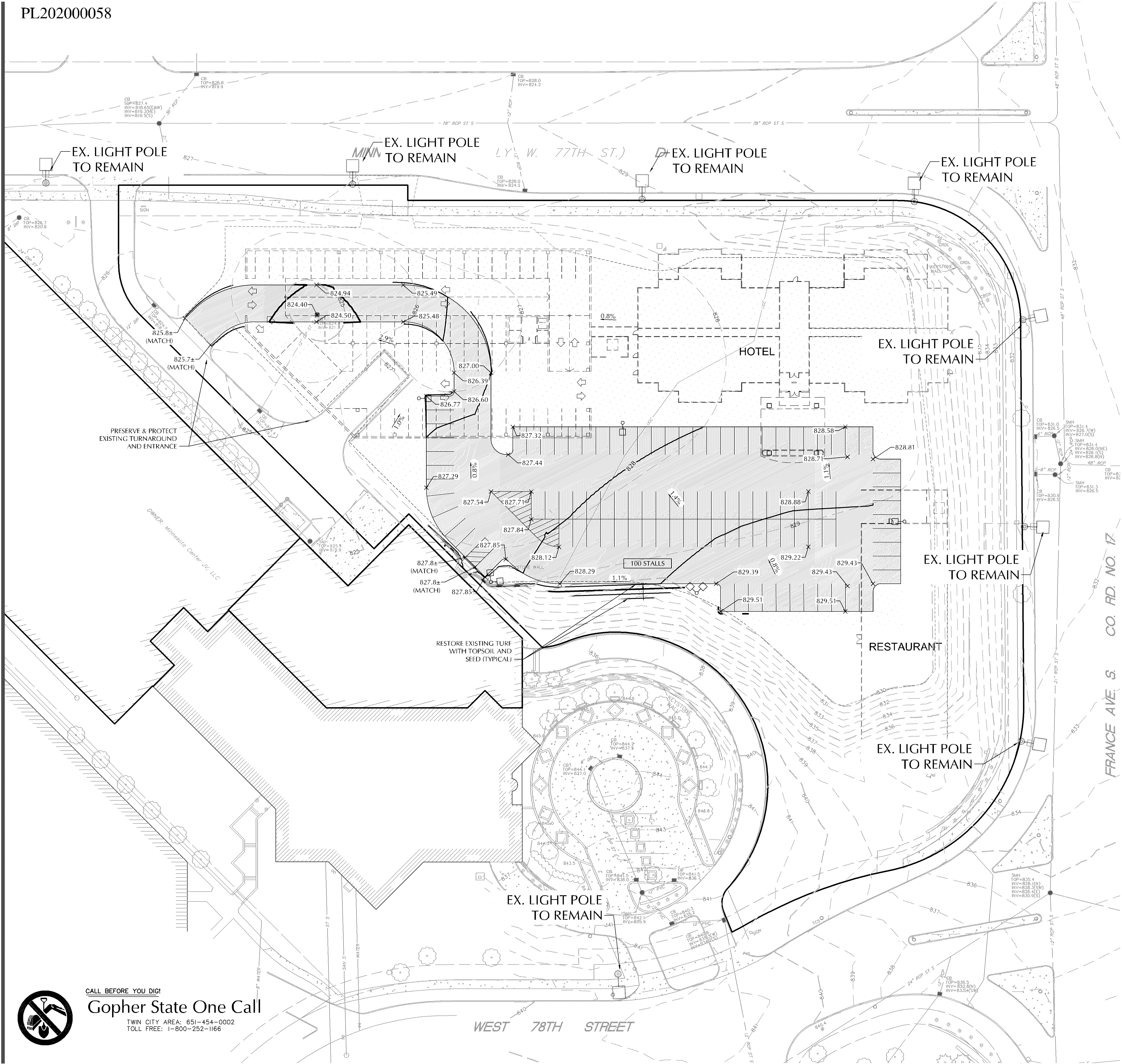
GRADING
PLAN

C3-1

Plotted: 03/31/2020 8:31 PM W:\2017\17457\CADD\DATA\Civil_dwg\Sheet Files\Phase 2 Surface Parking Project\C3-2 Grading Plan Overlay



CALL BEFORE YOU DIG!
Gopher State One Call
TWIN CITY AREA: 651-454-0002
TOLL FREE: 1-800-252-1166



GRADING, DRAINAGE & EROSION CONTROL NOTES

1. SPOT ELEVATIONS REPRESENT FINISHED SURFACE GRADES, GUTTER/FLOW LINE, OR EDGE OF PAVEMENT UNLESS OTHERWISE NOTED.
2. STREETS MUST BE CLEANED AND SWEEPED WHENEVER TRACKING OF SEDIMENTS OCCURS.
3. DUST MUST BE ADEQUATELY CONTROLLED.

EXISTING CONDITIONS NOTES

1. EXISTING SITE IMPROVEMENTS, UTILITIES, AND TOPOGRAPHY PROVIDED BY SUNDE LAND SURVEYING, DATED JULY 24, 2017. LOUCKS DOES NOT GUARANTEE THE ACCURACY, OR COMPLETENESS OF WORK PERFORMED BY OTHERS. CONTRACTOR SHALL FIELD VERIFY SITE CONDITIONS AND NOTIFY THE PROJECT ENGINEER AND PROJECT MANAGER IMMEDIATELY WITH ANY DISCREPANCIES.

PROJECT BENCHMARK

PER SUNDE LAND SURVEY DATED JULY 24, 2017

1. TOP OF TOP NUT OF FIRE HYDRANT ON THE SOUTH SIDE OF MINNESOTA DRIVE NEAR MOST NORTHERLY CORNER OF PARKING RAMP. ELEVATION = 829.05 FEET
2. TOP OF TOP NUT OF FIRE HYDRANT ON THE SOUTH SIDE OF MINNESOTA DRIVE 300 FEET +/- WEST OF FRANCE AVENUE. ELEVATION = 831.12 FEET
3. TOP OF TOP NUT OF FIRE HYDRANT AT NORTHWEST QUADRANT OF FRANCE AVENUE AND WEST 78TH STREET. ELEVATION = 837.06 FEET

WARNING:

THE CONTRACTOR SHALL BE RESPONSIBLE FOR CALLING FOR LOCATIONS OF ALL EXISTING UTILITIES. THEY SHALL COOPERATE WITH ALL UTILITY COMPANIES IN MAINTAINING THEIR SERVICE AND / OR RELOCATION OF LINES.

THE CONTRACTOR SHALL CONTACT GOPHER STATE ONE CALL AT 651-454-0002 AT LEAST 48 HOURS IN ADVANCE FOR THE LOCATIONS OF ALL UNDERGROUND WIRES, CABLES, CONDUITS, PIPES, MANHOLES, VALVES OR OTHER BURIED STRUCTURES BEFORE DIGGING. THE CONTRACTOR SHALL REPAIR OR REPLACE THE ABOVE WHEN DAMAGED DURING CONSTRUCTION AT NO COST TO THE OWNER.

DRURY PLAZA HOTEL INTERIM PARKING LOT
3901 MINNESOTA DRIVE
BLOOMINGTON, MINNESOTA

Drury Southwest, Inc.
101 S. Farrar Drive
Cape Girardeau, Missouri, 63701

LOUCKS
PLANNING
CIVIL ENGINEERING
LAND SURVEYING
LANDSCAPE ARCHITECTURE
ENVIRONMENTAL
7200 Hemlock Lane, Suite 300
Maple Grove, MN 55369
763.424.5505
www.loucksinc.com

CADD QUALIFICATION

CADD files prepared by the Consultant for this project are instruments of the Consultant's professional services for use solely with respect to this project. These CADD files shall not be used on other projects for additions to this project, or for completion of this project by others without written approval by the Consultant. With the Consultant's approval, others may be permitted to obtain copies of the CADD drawing files for information and reference only. All intentional or unintentional revisions, additions, or deletions to these CADD files shall be made at the full risk of that party making such revisions, additions or deletions and that party shall hold harmless and indemnify the Consultant from any & all responsibilities, claims, and liabilities.

SUBMITTAL/REVISIONS

03/06/20 CLIENT REVIEW /PRICING
04/01/20 REV. FINAL DEV. PLANS

PROFESSIONAL SIGNATURE

I hereby certify that this plan, specification or report was prepared by me or under my direct supervision and that I am a duly Licensed Professional Engineer under the laws of the State of Minnesota.

License No. Vicki J. Van Dell - PE 41352
Date -

QUALITY CONTROL

Loucks Project No. 17457.00
Project Lead MIV
Drawn By MIV
Checked By NMIM
Reviewed By NMIM

SHEET INDEX

C0-1	COVER SHEET
C1-1	EXISTING CONDITIONS PLAN
C2-1	SITE PLAN
C2-2	SITE PLAN OVERLAY
C3-1	GRADING PLAN
C3-2	GRADING PLAN OVERLAY
C8-1	CIVIL DETAILS
SL-1	SITE LIGHTING PLAN

GRADING PLAN OVERLAY
C3-2

