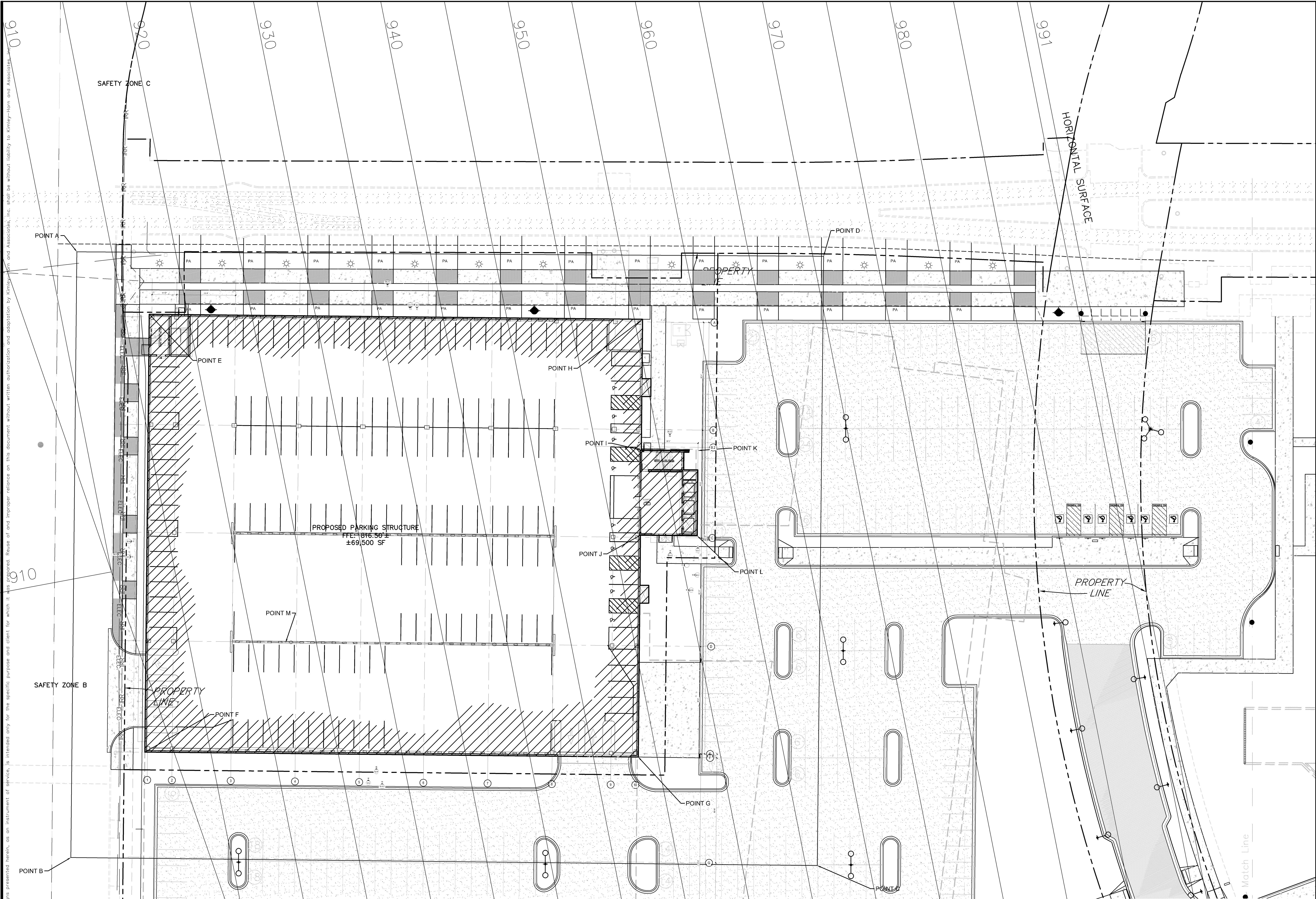


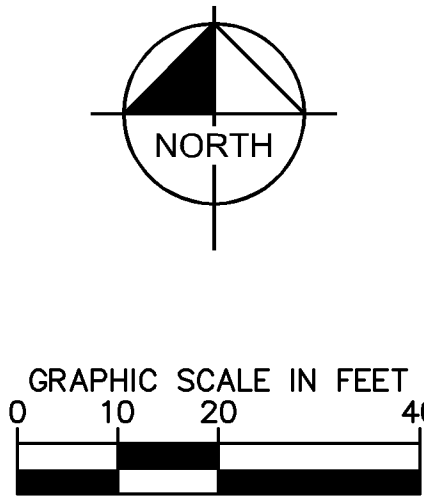
K:\TWC_DEV\MCGOUGH\BCS\DWG\PLAN SHEETS\HEALTH PARTNERS EXPANSION\C10.1 FAA.dwg November 27, 2016 - 8:19pm



CASE FILE #PL201600215

POINT	DESCRIPTION	GEODETIC POSITION (NAD 83, MINNESOTA, SOUTH ZONE)		MINNESOTA SOUTH STATE PLANE COORDINATES		GROUND ELEVATION (feet)	OBJECT HEIGHT (feet)	CONSTRUCTION OBJECT ELEVATION (feet)	OFFSET FROM RUNWAY 35-17 CENTERLINE (feet)
		LATITUDE (ddmmss.ss)	LONGITUDE	NORTHING	EASTING				
A	Work Zone (Crane)	N44° 51'22.77"	W93° 13'47.33"	1005731.91	2824383.53	817.0	113.0	930.0	1090.84
B	Work Zone (Crane)	N44° 51'19.42"	W93° 13'47.39"	1005392.46	2824382.58	817.0	113.0	930.0	1024.53
C	Work Zone (Crane)	N44° 51'19.37"	W93° 13'41.58"	1005391.30	2824800.63	814.0	158.0	972.0	1433.74
D	Work Zone (Crane)	N44° 51'22.72"	W93° 13'41.52"	1005730.74	2824801.83	817.0	169.0	986.0	1500.08
E	Parking Ramp Corner	N44° 51'22.42"	W93° 13'46.77"	1005698.85	2824424.23	816.5	69.5	886.0	1121.53
F	Parking Ramp Corner	N44° 51'20.00"	W93° 13'46.81"	1005451.75	2824423.66	816.5	69.5	886.0	1074.17
G	Parking Ramp Corner	N44° 51'19.97"	W93° 13'42.97"	1005451.32	2824700.28	816.5	69.5	886.0	1347.23
H	Parking Ramp Corner	N44° 51'22.39"	W93° 13'42.99"	1005696.41	2824700.85	816.5	69.5	886.0	1370.77
I	Elevator Corner	N44° 51'21.67"	W93° 13'42.94"	1005623.49	2824700.82	816.5	83.5	900.0	1379.96
J	Elevator Corner	N44° 51'21.20"	W93° 13'42.95"	1005575.89	2824700.55	816.5	83.5	900.0	1394.59
K	Elevator Corner	N44° 51'21.66"	W93° 13'42.50"	1005622.78	2824732.52	816.5	83.5	900.0	1410.09
L	Elevator Corner	N44° 51'21.19"	W93° 13'42.51"	1005575.18	2824732.25	816.5	83.5	900.0	1400.94
M	Light Pole	N44° 51'20.61"	W93° 13'45.71"	1005514.27	2824502.31	816.5	94.5	911.0	1163.80

APPROVED
ZONING REVIEW ONLY
NMJ 02/08/2017



BCS/HP PARKING
RAMP AND 8170
IMPROVEMENTS



B | W | B | R

380 St. Peter Street, Ste. 600
Saint Paul, MN 55102
651.222.3701
bwbr.com

Consultants

Kimley»Horn

This document may be an electronic file or may be printed from an electronic file provided to the user. It is the sole responsibility of the user to ensure that the content and quality is consistent with the content and quality of the paper documents on file at BWBR.

I hereby certify that this plan, specification or report was prepared by me or under my direct supervision and that I am a duly Licensed Professional Engineer under the laws of the State of Minnesota.

Name: *Thomas J. Gend*
Date: 10/28/2016 Reg. No. 21433

Issued For

Item	Date
CD PREVIEW SET	08/26/2016
CD REVIEW SET	09/27/2016
CD ISSUE	10/28/2016
AD1	

This Sheet may be a Reduced Copy.
The bar above is 1" long on a Full Size Sheet.
Drawing Scales apply to Full Size Sheets.

Comm. No. 3.2016178.00 Drawn NUL

Sheet Title
FDP AIRPORT ZONING
PERMIT PLAN

Sheet No.

2.200 - C10.1