

1801 W 80TH 1/2 ST, BLOOMINGTON, MN 55431 - Sign Criteria/Uniform Sign Design

New USD application with the City of Bloomington
signage at this is subject to the provisions of the Class VIII Sign District,
Section 19.115.02 of the City Code

A. Purpose

This Sign criteria/USD shall regulate the design, placement, and installation of tenant wall signs at **1801 W 80TH 1/2 ST, BLOOMINGTON, MN 55431** - an apartment building - to promote the aesthetics and general welfare of the affected community

B. Procedure for Sign Approval

1. All proposed signs must be reviewed and approved by property management or ownership. The tenant or sign company shall submit plans and specifications clearly showing the sign layout, color and materials and placement on the building elevation. Signs must adhere to general city signage code.
2. The tenant or sign company must acquire a sign permit prior to final installation and take on associated permitting cost.
3. No tenant signage shall be erected, constructed, altered, rebuilt, installed, or relocated until approved by management and the City of Bloomington has issued a permit

C. Criteria Standards for Wall Signage**1. Signage Allowed**

All signage shall adhere to the following guidelines:

- A. Two large projecting signs and one small blade sign
- B. Directional signs can be provided per Section 19.116 of the City Code

2. Sign Content

- A. Signage to be limited to client's proper name and logo

3. Size

- A. Signage shall adhere to standards set forward by the city of Bloomington

- (2) 35 sq ft cabinets at the North East and North West corners of the main buildings
- (1) 15.6 sq ft cabinet on the North East corner of the building on the corner of Morgan Ave S and West 80-1/2" st

4. Lines of Copy

- A. Signage shall not exceed 2 lines of copy

5. Color


- A. Signage Color limited to Tenants proper name and logo on the faces of 3 illuminated double face projecting sign cabinets

D. Prohibited Signage

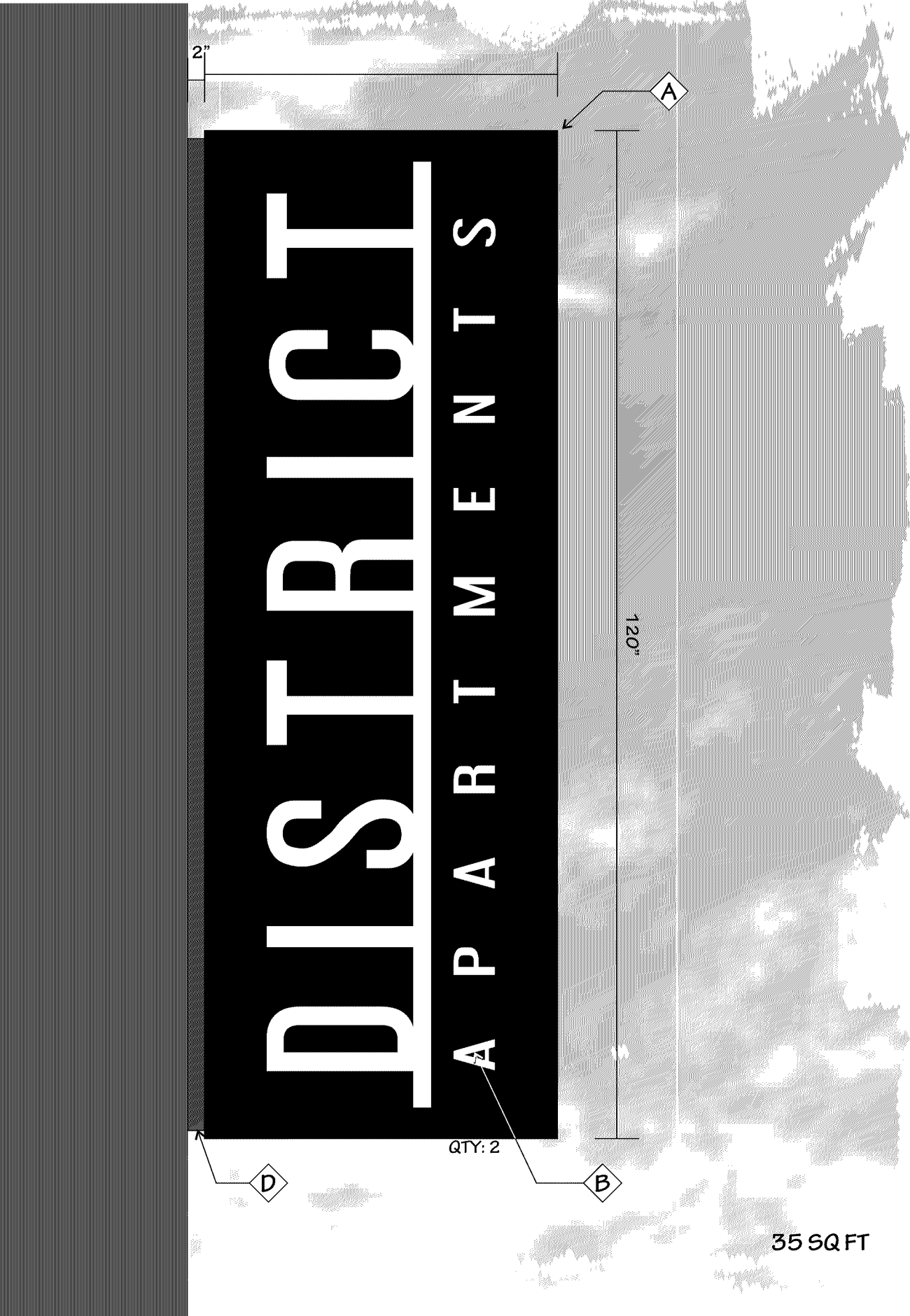
1. The following types of signs, components, or installation methods shall be prohibited
 - A. Excessive mounting holes drilled into the building.
 - B. Signs employing moving parts
 - C. Individual freestanding tenant signs or rooftop signs
 - D. Signs that are prohibited buy the City of Bloomington signage code.

This document was prepared by Signation Sign Group on behalf of Doug Gleinke
Justin Slingsby
Senior Designer and Project Manager
06/20/2020

Signed:.



APPROVED
Zoning Review Only
07/14/2020 NMJ



SIGN 1

CASE #PL2020-114

APPROVED
Zoning Review Only
07/14/2020 NMJ

ILLUMINATED WALL MOUNTED BLADE SIGN

- A MAIN CABINET**
- ILLUMINATED D/F ALUMINUM CABINET
 - 12" RETURNS
 - 1/8" ROUTED ALUMINUM FACES
 - PAINTED P1
 - WHITE LED ILLUMINATION (200 NITS) ON WHITE PRE-FINISHED ALUM BAFFLE
 - CABINET IS A SLIDE OVER
 - SUPPORT STRUCTURE IS INSTALLED DURING BUILDING CONSTRUCTION

- B ROUTED COPY**
- CABINET FACES HAVE ROUTED COPY
 - FACES ARE BACKED UP WITH 3/16" WHITE ACRYLIC

- C SUPPORT STRUCTURE**
- 4" SQUARE TUBE SUPPORTS
 - WELDED TO 8" SQUARE 1/2" ALUM PLATES
 - PLATES AND TUBE SUPPORTS ARE INSTALLED BEFORE FACADE PANEL IS INSTALLED

- D REVEAL**
- FABRICATED ALUMINUM REVEAL
 - PAINTED P2

INSTALL INFO:

- INSTALL WELDED PLATE SUPPORTS BEFORE BUILDING GETS FINAL FACADE PANEL
- CABINET SLEEVES OVER SUPPORTS
- POWER SUPPLIES AND SWITCH ARE INSIDE CABINET
- FINAL 120V CONNECTION BY OTHERS

FINISH SCHEDULE:

- P1** GREY PAINT TO MATCH SLIGHTLY DARKER TONE OF METAL
SALES SLATE GREY W38
- P2** GREY PAINT TO MATCH METAL
SALES SLATE GREY W38

SIGNATION
SIGN GROUP

6840 Shingle Creek Pkwy. #31
Brooklyn Center, MN 55430
PHONE (763) 561-1005
FAX (763) 561-1004

JOB NUMBER
14135

DATE
05/11/20

SALES/DESIGN
DOUG G/JS

CLIENT
WEIS BUILDERS

PROJECT
DISTRICT EXT SIGNS

JOB ADDRESS
AMERICAN BLVD W
& KNOX AVE S
BLOOMINGTON, MN 55431

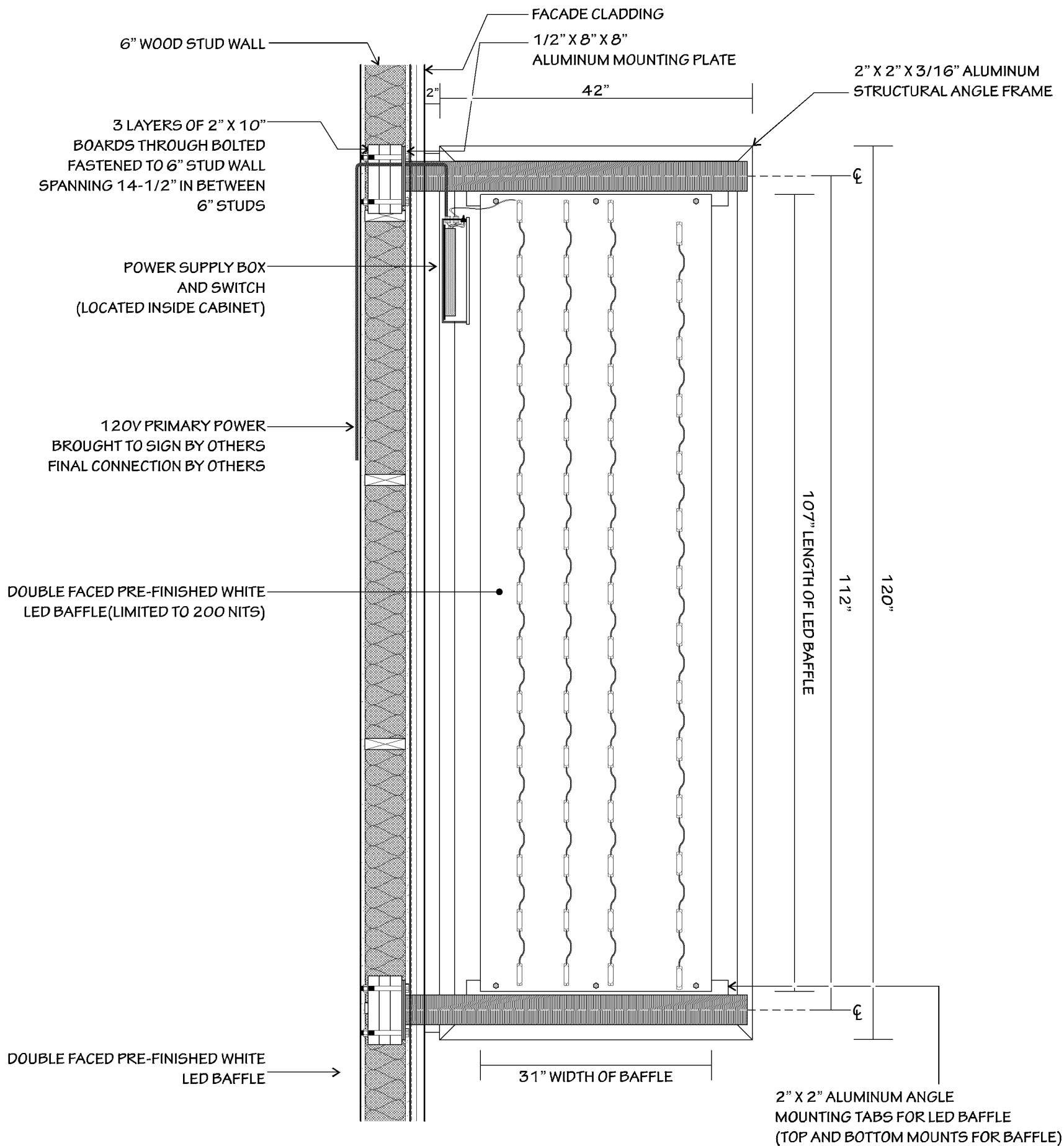
REVISION
5 07/14/2020 JS

**SIGN & DATE HERE IF
OK TO BEGIN PRODUCTION**

☐ Approved
☐ After Revisions
X

Date _____

All drawings contained herein are exclusive property of SIGNATION SIGN GROUP. The artwork is meant as a representation of a sign to be considered for manufacturing by SIGNATION SIGN GROUP, and no other sign manufacturer, unless otherwise noted and agreed to. Designs contained herein are not meant to be exhibited to others, outside of included parties and employees. Drawings may contain elements considered intellectual property of SIGNATION SIGN GROUP. Any improper use of this document is not allowed without reimbursement for time spent in the creation of this design. Written sizes have precedence over scaled dimensions. Materials may influence final result. Samples available upon request.
©2020 Signation Sign Group



CASE #PL2020-114

APPROVED
Zoning Review Only
07/14/2020 NMJ

6840 Shingle Creek Pkwy. #31
Brooklyn Center, MN 55430
PHONE (763) 561-1005
FAX (763) 561-1004

JOB NUMBER

14135

DATE

05/11/20

SALES/DESIGN

DOUG G/JS

CLIENT

WEIS BUILDERS

PROJECT

DISTRICT EXT SIGNS

JOB ADDRESS

AMERICAN BLVD W
& KNOX AVE S
BLOOMINGTON, MN 55431

REVISION

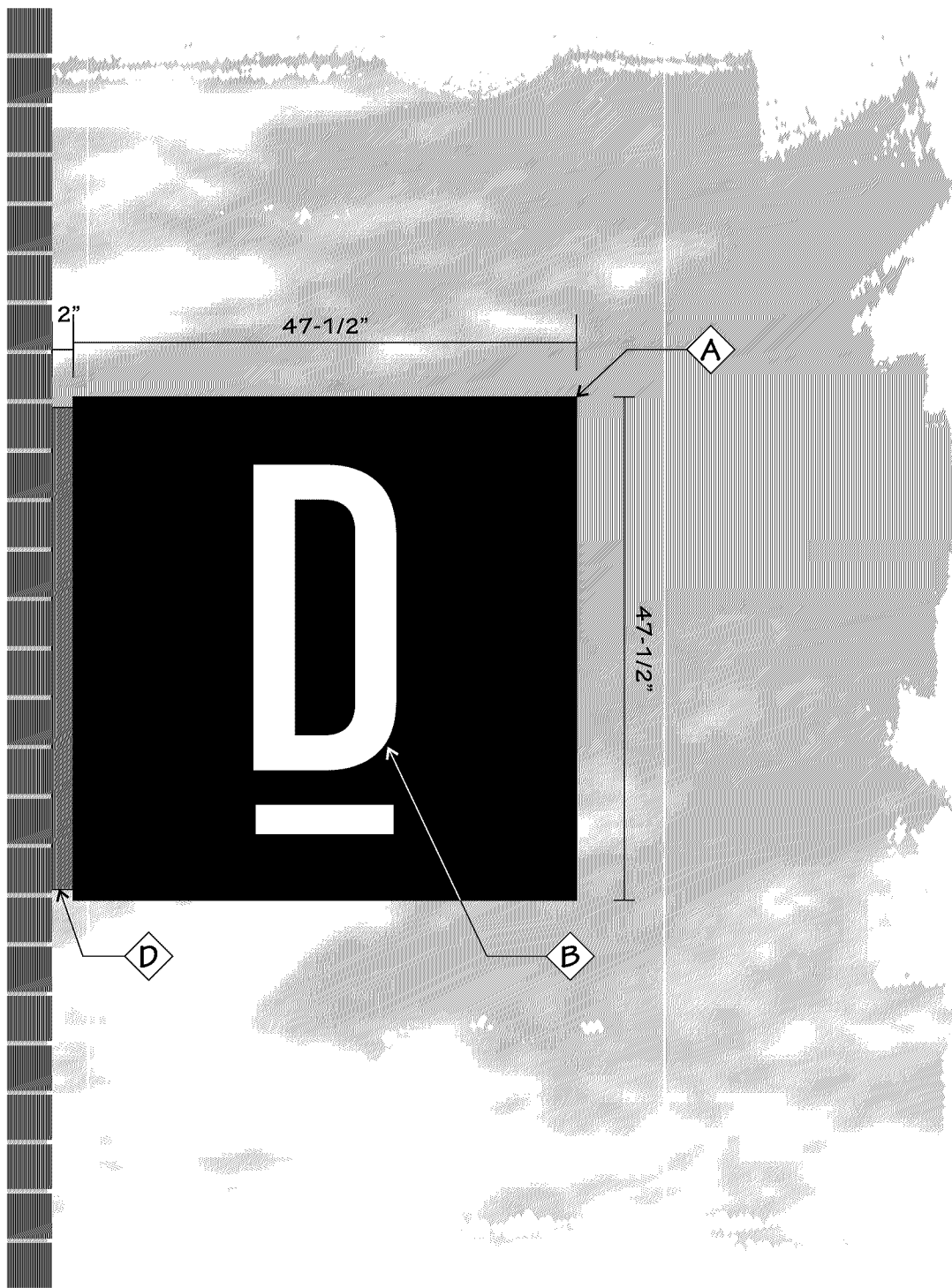
5 07/14/2020 JS

**SIGN & DATE HERE IF
OK TO BEGIN PRODUCTION**

☐ Approved
☐ After Revisions
X

Date _____

All drawings contained herein are exclusive property of SIGNATION SIGN GROUP. The artwork is meant as a representation of a sign to be considered for manufacturing by SIGNATION SIGN GROUP, and no other sign manufacturer, unless otherwise noted and agreed to. Designs contained herein are not meant to be exhibited to others, outside of included parties and employees. Drawings may contain elements considered intellectual property of SIGNATION SIGN GROUP. Any improper use of this document is not allowed without reimbursement for time spent in the creation of this design. Written sizes have precedence over scaled dimensions. Materials may influence final result. Samples available upon request.
©2020 Signation Sign Group



15.6 SQ FT

SIGN 2

CASE #PL2020-114

APPROVED

Zoning Review Only

07/14/2020 NMJ

- ILLUMINATED WALL MOUNTED BLADE SIGN
- A

MAIN CABINET
 - ILLUMINATED D/F ALUMINUM CABINET
 - 8" RETURNS
 - 1/8" ROUTED ALUMINUM FACES
 - PAINTED P1
 - WHITE LED ILLUMINATION (200 NITS) ON WHITE PRE-FINISHED ALUM BAFFLE
 - CABINET IS A SLIDE OVER

B

ROUTED COPY
 - CABINET FACES HAVE ROUTED COPY
 - FACES ARE BACKED UP WITH 3/16" WHITE ACRYLIC

C

SUPPORT STRUCTURE
 - 3" SQUARE TUBE SUPPORTS
 - WELDED TO 6" SQUARE 1/2" ALUM PLATES
 - PLATES AND TUBE SUPPORTS ARE INSTALLED BEFORE CABINET AND REVEAL

D

REVEAL
 - FABRICATED ALUMINUM REVEAL
 - PAINTED P2

INSTALL INFO:
 - INSTALL WELDED PLATE SUPPORTS FIRST
 - INSTALL REVEAL
 - CABINET SLEEVES OVER SUPPORTS
 - POWER SUPPLIES AND SWITCH ARE INSIDE CABINET
 - FINAL 120V CONNECTION BY OTHERS

FINISH SCHEDULE:

P1

GREY PAINT TO MATCH SLIGHTLY DARKER TONE OF METAL SALES SLATE GREY W38

P2

GREY PAINT TO MATCH METAL SALES SLATE GREY W38

SIGNATION
SIGN GROUP

6840 Shingle Creek Pkwy. #31
Brooklyn Center, MN 55430
PHONE (763) 561-1005
FAX (763) 561-1004

JOB NUMBER

14135

DATE

05/11/20

SALES/DESIGN

DOUG G/JS

CLIENT

WEIS BUILDERS

PROJECT

DISTRICT EXT SIGNS

JOB ADDRESS

AMERICAN BLVD W
& KNOX AVE S
BLOOMINGTON, MN 55431

REVISION

5

07/14/2020 JS

SIGN & DATE HERE IF OK TO BEGIN PRODUCTION

☐ Approved

☐ After Revisions

X

Date

All drawings contained herein are exclusive property of SIGNATION SIGN GROUP. The artwork is meant as a representation of a sign to be considered for manufacturing by SIGNATION SIGN GROUP, and no other sign manufacturer, unless otherwise noted and agreed to. Designs contained herein are not meant to be exhibited to others, outside of included parties and employees. Drawings may contain elements considered intellectual property of SIGNATION SIGN GROUP. Any improper use of this document is not allowed without reimbursement for time spent in the creation of this design. Written sizes have precedence over scaled dimensions. Materials may influence final result. Samples available upon request.
©2020 Signation Sign Group

3

6840 Shingle Creek Pkwy. #31
Brooklyn Center, MN 55430
PHONE (763) 561-1005
FAX (763) 561-1004

JOB NUMBER

14135

DATE

05/11/20

SALES/DESIGN

DOUG G/JS

CLIENT

WEIS BUILDERS

PROJECT

DISTRICT EXT SIGNS

JOB ADDRESS

AMERICAN BLVD W
& KNOX AVE S
BLOOMINGTON, MN 55431

REVISION

5 07/14/2020 JS

**SIGN & DATE HERE IF
OK TO BEGIN PRODUCTION**

☐ Approved
☐ After Revisions

X
Date _____

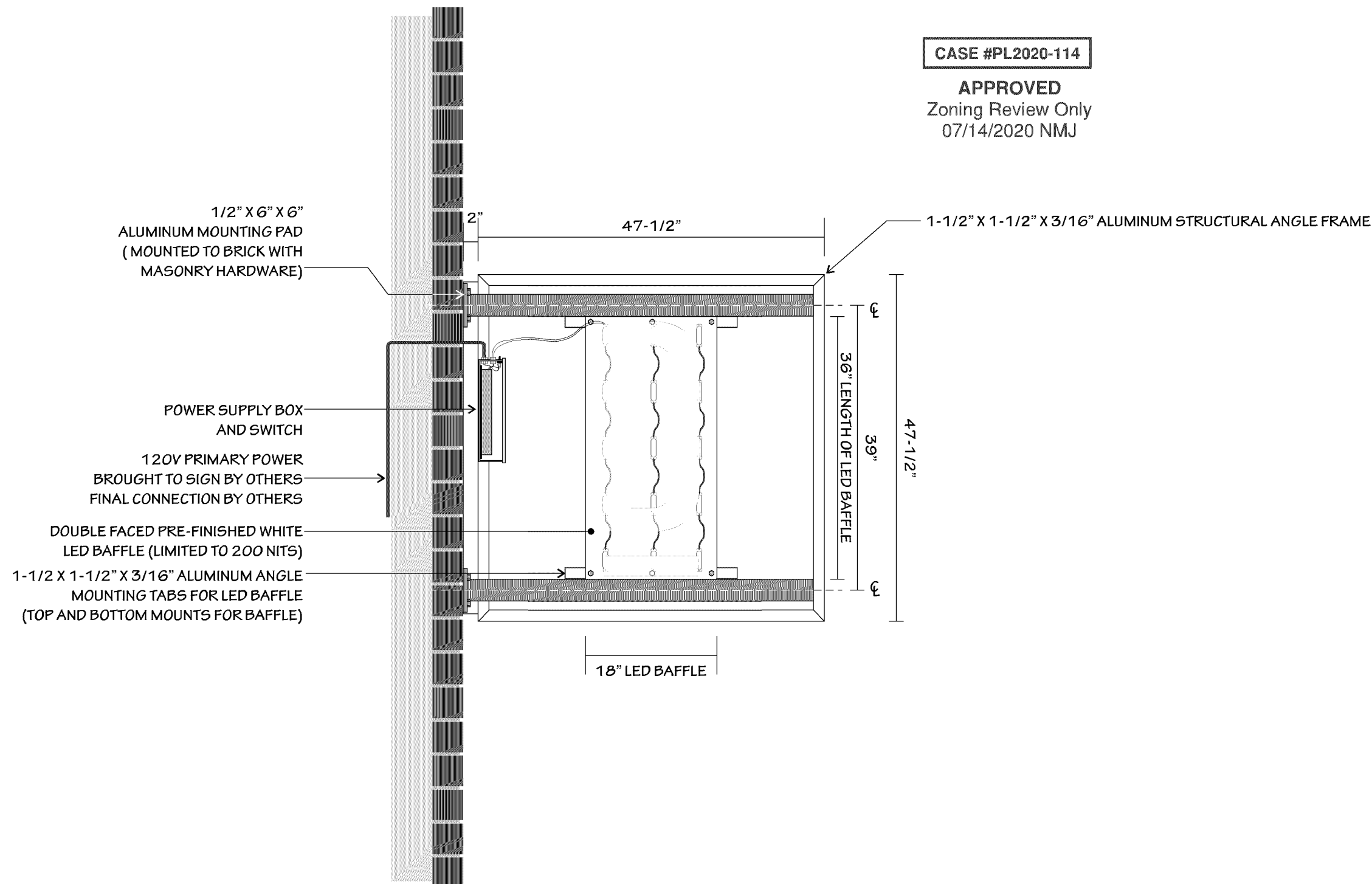
All drawings contained herein are exclusive property of SIGNATION SIGN GROUP. The artwork is meant as a representation of a sign to be considered for manufacturing by SIGNATION SIGN GROUP, and no other sign manufacturer, unless otherwise noted and agreed to. Designs contained herein are not meant to be exhibited to others, outside of included parties and employees. Drawings may contain elements considered intellectual property of SIGNATION SIGN GROUP. Any improper use of this document is not allowed without reimbursement for time spent in the creation of this design. Written sizes have precedence over scaled dimensions. Materials may influence final result. Samples available upon request.
©2020 Signation Sign Group

SIGN 2

CASE #PL2020-114

APPROVED

Zoning Review Only
07/14/2020 NMJ





SIGN 1 (PRIMARY)



SIGN 1 (PRIMARY)



SIGN 2 (SECONDARY)

CASE #PL2020-114

APPROVED
Zoning Review Only
07/14/2020 NMJ

SIGNATION
SIGN GROUP

6840 Shingle Creek Pkwy. #31
Brooklyn Center, MN 55430
PHONE (763) 561-1005
FAX (763) 561-1004

JOB NUMBER

14135

DATE

05/11/20

SALES/DESIGN

DOUG G/JS

CLIENT

WEIS BUILDERS

PROJECT

DISTRICT EXT SIGNS

JOB ADDRESS

AMERICAN BLVD W
& KNOX AVE S
BLOOMINGTON, MN 55431

REVISION

5 07/14/2020 JS

**SIGN & DATE HERE IF
OK TO BEGIN PRODUCTION**

- ☐ Approved
☐ After Revisions
X

Date _____

All drawings contained herein are exclusive property of SIGNATION SIGN GROUP. The artwork is meant as a representation of a sign to be considered for manufacturing by SIGNATION SIGN GROUP, and no other sign manufacturer, unless otherwise noted and agreed to. Designs contained herein are not meant to be exhibited to others, outside of included parties and employees. Drawings may contain elements considered intellectual property of SIGNATION SIGN GROUP. Any improper use of this document is not allowed without reimbursement for time spent in the creation of this design. Written sizes have precedence over scaled dimensions. Materials may influence final result. Samples available upon request.
©2020 Signation Sign Group

6840 Shingle Creek Pkwy. #31
Brooklyn Center, MN 55430
PHONE (763) 561-1005
FAX (763) 561-1004

JOB NUMBER

14135

DATE

05/11/20

SALES/DESIGN

DOUG G/JS

CLIENT

WEIS BUILDERS

PROJECT

DISTRICT EXT SIGNS

JOB ADDRESS

AMERICAN BLVD W

& KNOX AVE S

BLOOMINGTON, MN 55431

REVISION

5 07/14/2020 JS

SIGN & DATE HERE IF

OK TO BEGIN PRODUCTION

☐ Approved

☐ After Revisions

X

Date _____

All drawings contained herein

are exclusive property of
SIGNATION SIGN GROUP.

The artwork is meant as a
representation of a sign to be
considered for manufacturing by
SIGNATION SIGN GROUP, and
no other sign manufacturer,
unless otherwise noted and agreed to.

Designs contained herein are not
meant to be exhibited to others,
outside of included parties and
employees. Drawings may contain
elements considered intellectual
property of SIGNATION SIGN GROUP.
Any improper use of this document
is not allowed without reimbursement
for time spent in the creation of this design.

Written sizes have precedence over
scaled dimensions. Materials may
influence final result. Samples available
upon request.

©2020 Signation Sign Group

