

LIGHTING PLAN
APPROVED
 No changes in fixture or location
 without a revised plan review.
 08/06/2020
 lpease

Calculation Summary

Label	CalcType	Units	Avg	Max	Min	Avg/Min	Max/Min
Ground_Planar	Illuminanc	Fc	1.33	11.3	0.0	N.A.	N.A.
Luminaire Schedule							
Symbol	Qty	Label	Arrangement	LLF	Description	Lum. Lumens	
□	7	WP	SINGLE	1.000	PRV-C60-D-UNV-T4-BZ-WM	19984	
□	2	PROOF	SINGLE	1.000	PRV-XL-PA3B-740-U-5WQ	31559	

Drawn By: Dan Budke
 Checked By:
 Date: 8/3/2020
 Scale:

#	Date	Comments
Revisions		

Lyndale Business Center
 Initial



LYNDALE BUSINESS CENTER

Bloomington, Minnesota

Keenan 1st Addition

Block 1, Lot 2

Hoyt Development Inc.

RECEIVED
DIVISION OF CITY PLANNING
JAN 13 1984
CITY OF BLOOMINGTON
MINNESOTA

NOTES:
1) 8'-10' SEPARATION FROM UTILITY LINES REQUIRED ONLY FOR OVERSTORY TREES.
2) QUANTITIES OF EVERGREEN SHRUBS USED FOR 5' SCREENING SUBJECT TO ADJUSTMENT IN FIELD IN ORDER TO PROVIDE REQUIRED SOLID SCREEN

QUANTITY	COMMON NAME	BOTANICAL NAME	SIZE
7	SHADEMASTER LOCUST *	GLIEDERIA TRIACANTHOS 'SHADEMASTER'	2 1/2" BB
11	TECHNY ARBOVITAE * (6'-0" O.C.)	THUJA OCCIDENTALIS 'TECHNY'	4" BB
9	MONTANA MUGHO PINE	PINUS MUGO	24" H
24	MANEY JUNIPER (8'-0" O.C.)	JUNIPERUS CHINENSIS 'MANEY'	24" H
30	JAPANESE SPREADING YEW	TAXUS CUSPIDATA	18" BT
167	HUGHES JUNIPER	JUNIPERUS HORIZONTALIS 'HUGHES'	18" BT
1	GREEN ASH *	FRAXINUS PENNSYLVANICA LANCEOLATA	1 1/2" BB
4	HACK-BERRY *	CELTIS OCCIDENTALIS	2 1/2" BB

OCCUPANCY CLASSIFICATION B-1, B-2
CONSTRUCTION TYPE II-N

SITE DATA ZONED I-3

SITE AREA: 104,599.95 G.F. = 2.4 ACRES
BUILDING AREA: 40,598.5 G.F.
SITE COVERAGE: 38.83%
SETBACKS:
FRONT = 35'-0"
SIDE = 10'-0"
REAR = 20'-0"
PARKING REQUIREMENTS FOR 37,025.5 GROSS RENTABLE G.F.
OFFICE (TENANT): 4,981.0 G.F. @ 1/100 = 29
W.HOE. (TENANT): 21,131.5 G.F. @ 1/800 = 26.5
OFFICE (SPEC.): 4,114.3 G.F. @ 1/100 = 20.5
W.HOE. (SPEC.): 9,289.7 G.F. @ 1/800 = 11.74

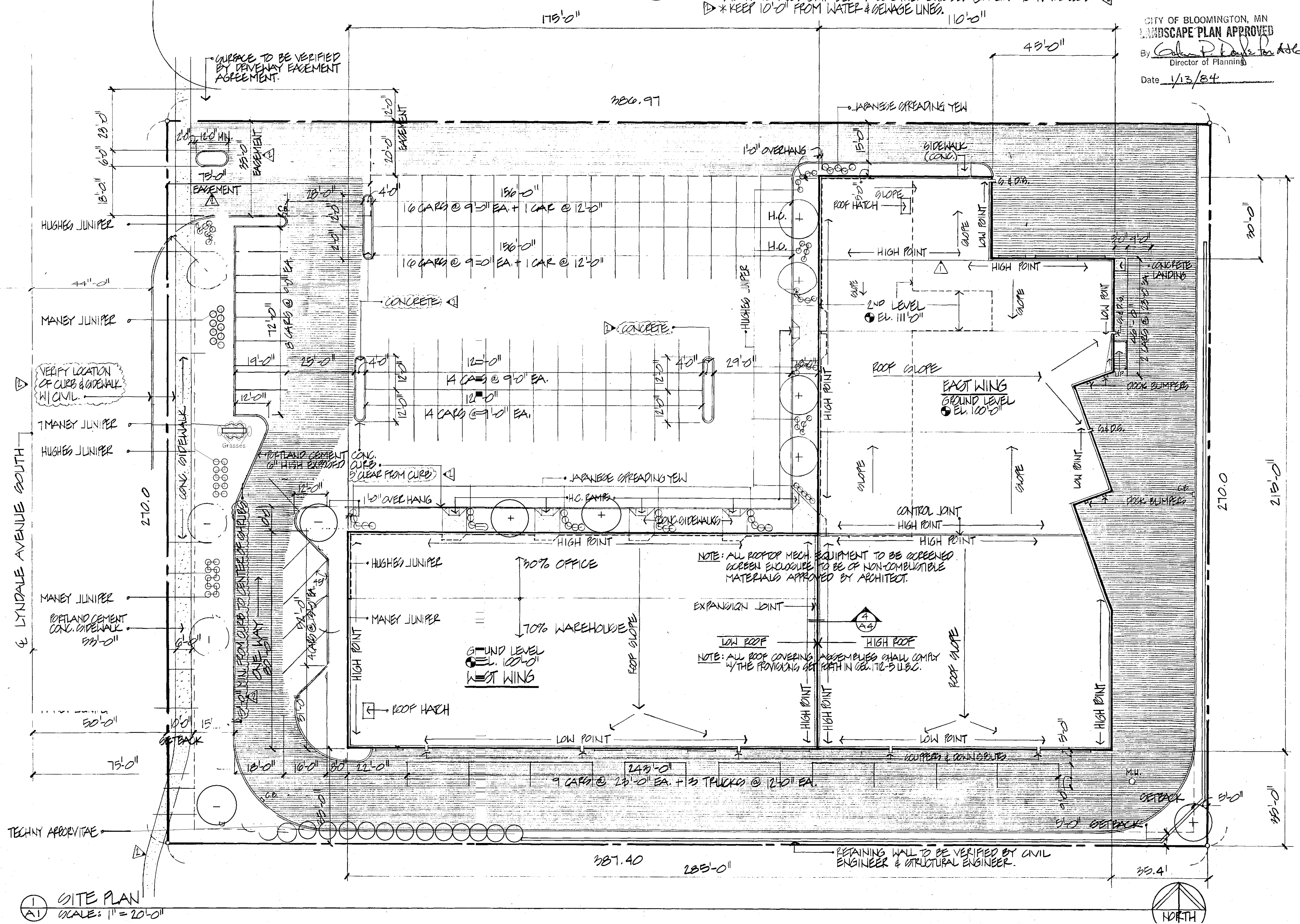
TOTAL REQUIRED 83.74 CARS
TOTAL PROVIDED 85 CARS

SHEET INDEX

A-1 SITE PLAN
A-2 1ST & 2ND LEVEL FLOOR PLAN
A-3 ELEVATIONS
A-4 WALL SECTIONS, DETAILS & STAIR SECTIONS
A-5 SCHEDULES, TOILET & ENTRANCE PLANS, INTERIOR ELEVATIONS

INDICATES TRUCKING SURFACE

NOTE:
• REMOVE EXISTING BITUMINOUS & LOADING ROCK SEE CIVIL.
• ALL CURB HEIGHTS AND RADII TO BE VERIFIED BY CIVIL ENGINEER.
• GRASS MUST BE TRUCKED OFF SITE
• CONTACT GALEN ROYLE OF THE CITY OF BLOOMINGTON PLANNING DEPARTMENT BEFORE PLANTING. 887-9636
* ALL CHANGES TO LANDSCAPE LAYOUT, SHRUBS, MATERIALS, ETC. TO BE APPROVED BY DIRECTOR OF PLANNING OF THE CITY OF BLOOMINGTON.



CITY OF BLOOMINGTON, MN
LANDSCAPE PLAN APPROVED
By *Calvin P. Decker, Jr.*
Director of Planning
Date 1/13/84

Hoyt Development Inc.
Lyndale Business Center
Bloomington, Minnesota

RUSSELL J. SAULON
ARCHITECTS PROFESSIONAL ASSOCIATION
10125 Crosstown Circle - Minneapolis, Minnesota 55344 - 612-944-2920

DRAWN BY D.L.P.
CHECKED BY [Signature]
DATE 11-18-83

SHEET TITLE: SITE PLAN 1" = 20'-0"

REVISIONS:

1. Health Center, Part Two Plan Submittal (City Report was Program B). M. Co. Under My Direct Supervision and That I am a duly Registered Architect Under the Laws of the State of Minnesota. Reg No. [Number]