

The property located at 611 West 98th Street shall comprise the boundaries for this USD.

The property will have a newly built Bank of America located within its boundaries. This building will utilize wall signage, freestanding signage, and informational signage throughout the property. Details of all signage on the property are listed within this USD. Please see attached prints for exact locations and specific details for each sign:

Freestanding Signage:

Front yard monument sign: Sign will be 5' 2 ½" x 12' 9" and will be 8' in overall height. This sign will include 67 total square feet of signage. Quantity 1. Sign number 1 on the plan set

Directional signs: Signs will be 1'3" x 2' 1" and will be 3' in overall height. The signs will be 3 square feet each. Quantity 2. Sign numbers 12 and 13 on the plan set

Informational signs: Signs will be 12" x 18" and will be 7' in overall height. The signs will be 1.5 square feet. Quantity 2
Signs will be 18" x 18" and will be 8'2" in overall height. The signs will be 2 square feet. Quantity 1
Sign numbers 14 and 15 on the plan set

Wall Signage:

East Elevation Primary wall: Sign will be 4' 6" x 11' 1". The sign will be 50 square feet. Quantity 1. Sign number 2 on the plan set. Total wall square footage 954, allowable signage is 8% or 76 square feet

North Elevation Secondary wall: Sign will be 2'7" x 15' 9". The sign will be 41 square feet. Quantity 1. Sign number 3 on the plan set. Total wall square footage 1440, allowable signage is 4% or 58 square feet

South Elevation Secondary wall: Sign will be 2'7" x 15' 9". The sign will be 41 square feet. Quantity 1. Sign number 4 on the plan set. Total wall square footage 1440, allowable signage is 4% or 58 square feet

West Elevation Primary wall: Sign will be 2'7" x 15' 9". The sign will be 41 square feet. Quantity 1. Sign number 5 on the plan set. Total wall square footage 954, allowable signage is 8% or 76 square feet

Drive Thru Canopy: Signs will be 7 ¾" x 4' 5". Sign will be 3 square feet. Quantity 3. Sign numbers 16, 17, and 18 on the plan set.

1517 94th Lane NE Minneapolis, MN 55449

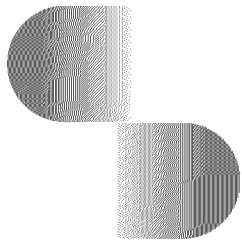
763-571-2995

www.scoutdoor.com

APPROVED
Zoning Review Only
04/20/2021 NMJ

CASE #PL2021-72

BANK OF AMERICA 



StratusTM

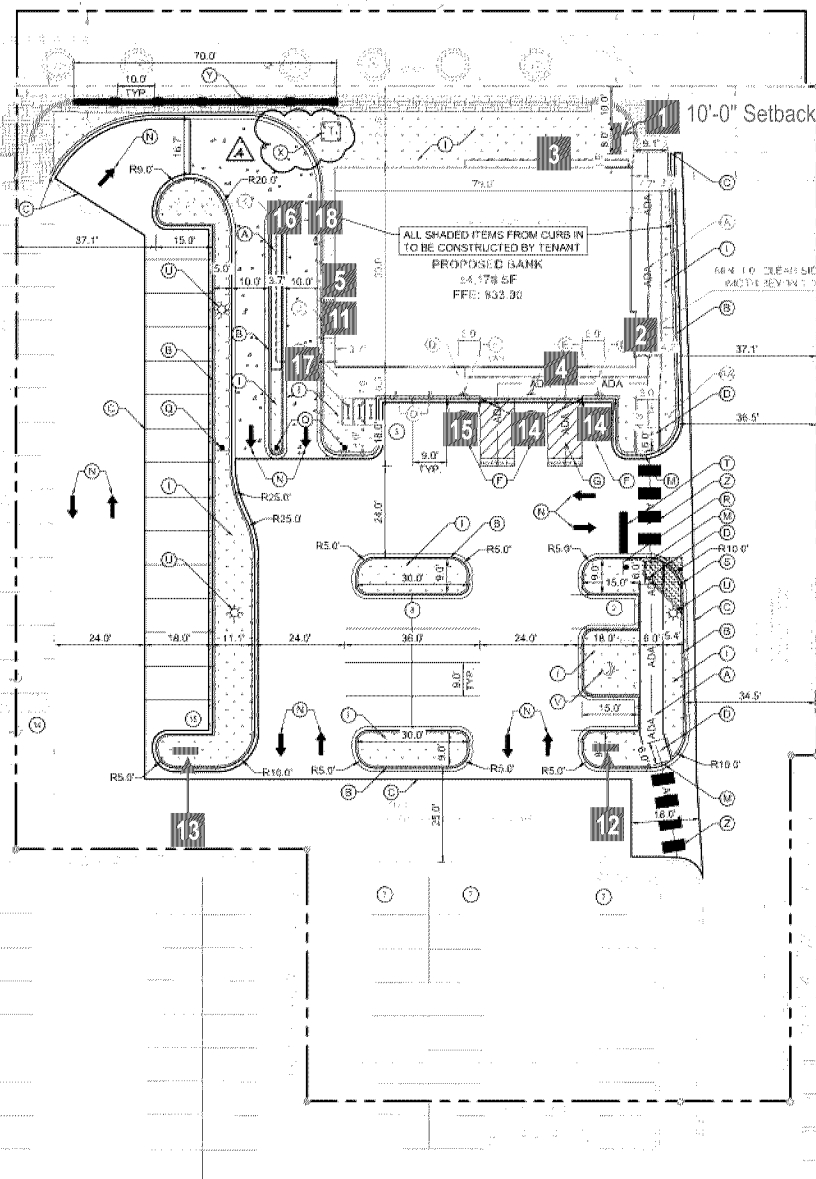
stratusunlimited.com

888.503.1569

APPROVED
Zoning Review Only
04/20/2021 NMJ

WEST 98TH STREET

(VARIABLE WIDTH RIGHT-OF-WAY)



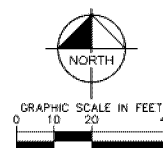
Proposed Sign Schedule

Item	Description	Qty	Page #
1	B4.1-FWng - 8'-0" Monument w/ Foundation	1	7
2	C3ng Illum. Ch. Letters on Non-Illum. Backer	1	8
3	D5ng - 9" Illum. Ch. Letters on Non-Illum. Backer	1	9
4	D5ng - 9" Illum. Ch. Letters on Non-Illum. Backer	1	9
5	D5ng - 9" Illum. Ch. Letters on Non-Illum. Backer	1	9
6	Door Vinyl - Standard w/ ADA Decal	1	10
7	AUTOMATIC DOOR DECAL	2	10
8	Security Camera Vinyl	1	11
9	White Address Numerals	1	11
10	CARD READER DECAL AUTOMATIC DOORS	1	11
11	No Smoking Plaque - Informational Sign	1	12
12	P1ng - D/F Directional	1	13
13	P1ng - D/F Directional	1	14
14	ADA - Reserved Parking Only	2	15
15	RP1ng Pole Mounted Regulatory - LEV	1	16
16	SS1ng - Informational Regulatory	1	17
17	SS2ng - Informational Regulatory	1	17
18	SS3ng - Directional Regulatory	1	17

NOTE:
INSTALLATION LOCATIONS TBD
FOR SIGNS #11, #12, #13 & #14

SIGN #1 NOTE:

10'-0" Setback from ROW
to Leading Edge of Sign
from 98th Street and Driveway.
Pending City Council Approval.



Drawing prepared by:

SITE PLAN

Drawing prepared for:

Location:
611 W 98th St.
Bloomington, MN 55420-4715

Proj #:
4305
Loc #:
6110

File Path:

Active\BANKS\B\Bank Of America\2020\Locations\4305_6110_Bloomington_MN_R6.cdr

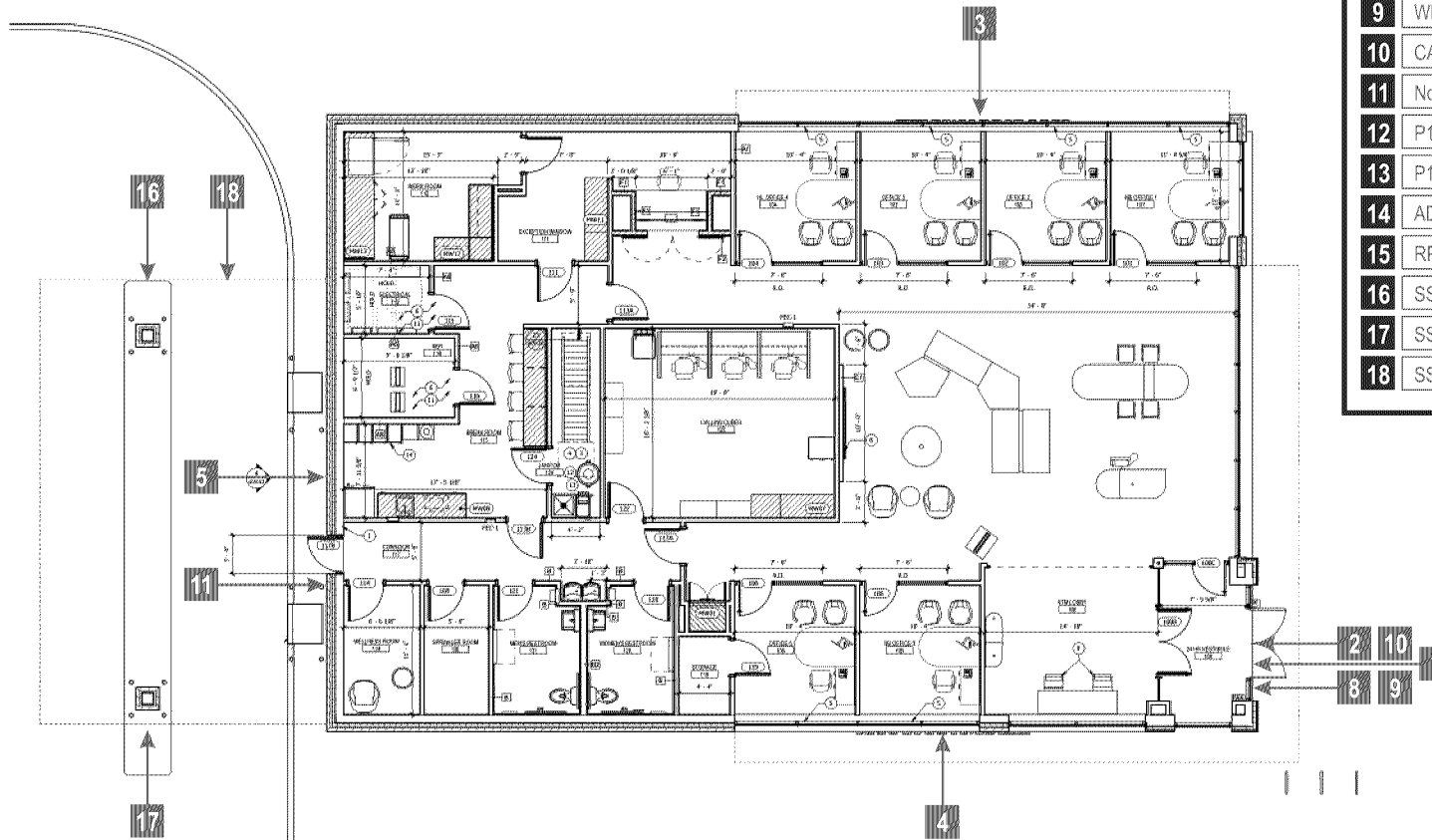
BANK OF AMERICA

Rev #	Req#	Date	Req. By	Drawn By	Revision Description	Drawings are the exclusive property of STRATUS. Any unauthorized use or duplication is not permitted.
Original	326276	05/08/20	MH	Sb		
Rev 1	326745	05/27/20	MH	NPP	Rev Sign1 and 2 - Ltrs on Backer, plus addition changes.	
Rev 2	327028	06/06/20	MH	Sb	Various Changes - See Request	
Rev 3	327276	06/14/20	MH	Sb	Change Signs 4 & 5 to D5ng	
Rev 4	329078	08/17/20	MH	Sb	Added bank hours and clearance bar height	
Rev 5	337194	03/16/20	MH	Lv	Added sign 7 - Caution automatic door decal	
Rev 6	337496	03/23/20	MH	Lv	Update site plan - update sign one & re-named elevations	

Rev #	Req#	Date	Req. By	Drawn By
Rev 7	000000	00/00/00	XXX	XXX
Rev 8	000000	00/00/00	XXX	XXX
Rev 9	000000	00/00/00	XXX	XXX
Rev 10	000000	00/00/00	XXX	XXX

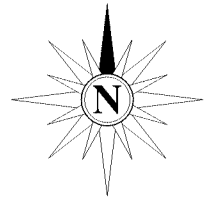
Pg. 3

APPROVED
Zoning Review Only
04/20/2021 NMJ



Proposed Sign Schedule

Item	Description	Qty	Page #
1	B4.1-FWng - 8'-0" Monument w/ Foundation	1	7
2	C3ng Illum. Ch. Letters on Non-Illum. Backer	1	8
3	D5ng - 9" Illum. Ch. Letters on Non-Illum. Backer	1	9
4	D5ng - 9" Illum. Ch. Letters on Non-Illum. Backer	1	9
5	D5ng - 9" Illum. Ch. Letters on Non-Illum. Backer	1	9
6	Door Vinyl - Standard w/ ADA Decal	1	10
7	AUTOMATIC DOOR DECAL	2	10
8	Security Camera Vinyl	1	11
9	White Address Numerals	1	11
10	CARD READER DECAL AUTOMATIC DOORS	1	11
11	No Smoking Plaque - Informational Sign	1	12
12	P1ng - D/F Directional	1	13
13	P1ng - D/F Directional	1	14
14	ADA - Reserved Parking Only	2	15
15	RP1ng Pole Mounted Regulatory - LEV	1	16
16	SS1ng - Informational Regulatory	1	17
17	SS2ng - Informational Regulatory	1	17
18	SS3ng - Directional Regulatory	1	17



Drawing prepared by:

FLOOR PLAN

Drawing prepared for:

Location:
611 W 98th St.
Bloomington, MN 55420-4715

Proj #:
4305
Loc #:
6110

File Path:

Active\BANKS\B\Bank Of America\2020\Locations\4305_6110_Bloomington_MN_R6.cdr

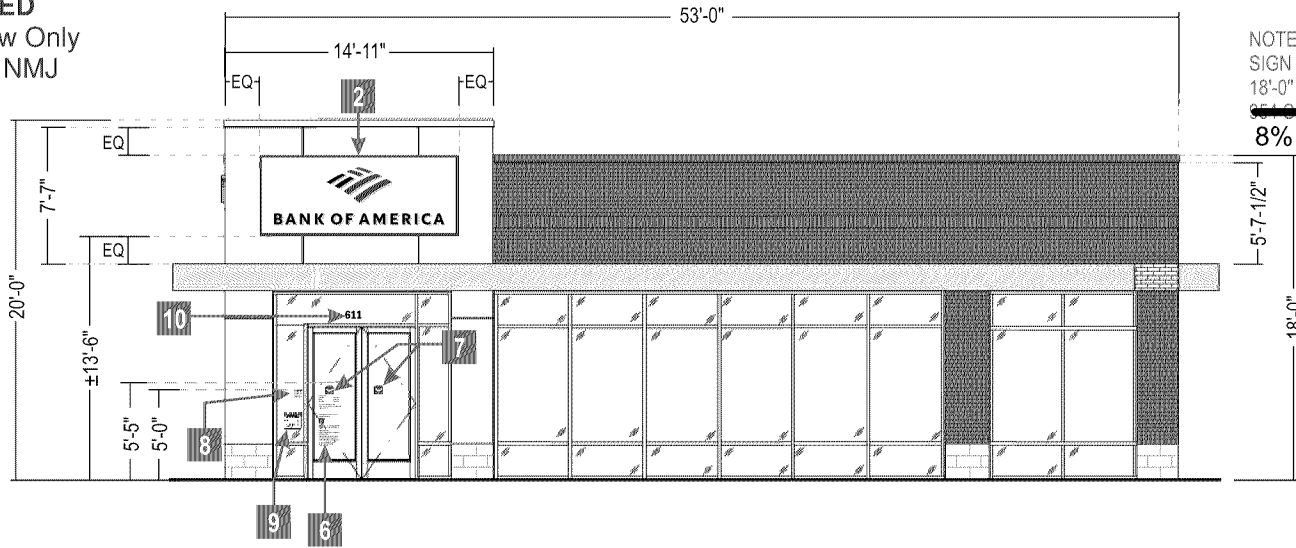
BANK OF AMERICA

Rev #:	Req#:	Date:	Req. By:	Drawn By:	Revision Description:	Drawings are the exclusive property of STRATUS. Any unauthorized use or duplication is not permitted.
Original	326276	05/08/20	MH	Sb		
Rev 1	326745	05/27/20	MH	NPP	Rev Sign1 and 2 - Ltrs on Backer, plus addition changes.	
Rev 2	327028	06/06/20	MH	Sb	Various Changes - See Request	
Rev 3	327276	06/14/20	MH	Sb	Change Signs 4 & 5 to D5ng	
Rev 4	329078	08/17/20	MH	Sb	Added bank hours and clearance bar height	
Rev 5	337194	03/16/20	MH	Lv	Added sign 7 - Caution automatic door decal	
Rev 6	337496	03/23/20	MH	Lv	Update site plan - update sign one & re-named elevations	

Rev #:	Req#:	Date:	Req. By:	Drawn By:
Rev 7	000000	00/00/00	XXX	XXX
Rev 8	000000	00/00/00	XXX	XXX
Rev 9	000000	00/00/00	XXX	XXX
Rev 10	000000	00/00/00	XXX	XXX

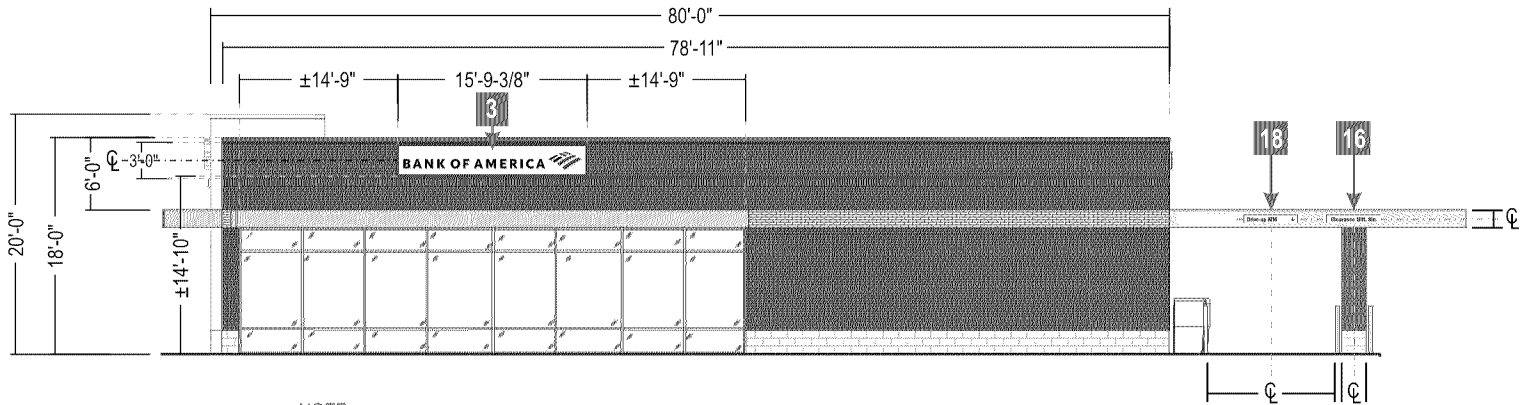
Pg. 4

APPROVED
Zoning Review Only
04/20/2021 NMJ



PRIMARY ELEVATION (EAST)

SCALE: 3/32"=1'-0"



SECONDARY ELEVATION (NORTH)

SCALE: 1/16"=1'-0"

Drawing prepared by:

ELEVATION

Drawing prepared for:

Location: 611 W 98th St.
Bloomington, MN 55420-4715
File Path: Active\BANKS\B\Bank Of America\2020\Locations\4305_6110_Bloomington_MN_R6.cdr

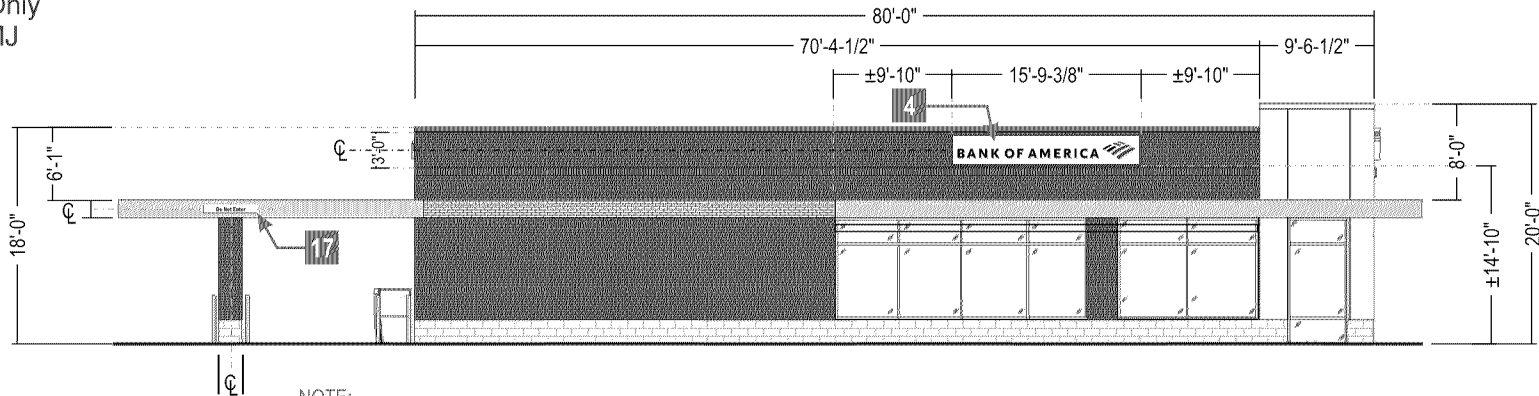
Proj #: 4305
Loc #: 6110

BANK OF AMERICA

Rev #:	Req#:	Date:	Req. By:	Drawn By:	Revision Description:	Drawings are the exclusive property of STRATUS. Any unauthorized use or duplication is not permitted.
Original	326276	05/08/20	MH	Sb		
Rev 1	326745	05/27/20	MH	NPP	Rev Sign1 and 2 - Ltrs on Backer, plus addition changes.	
Rev 2	327028	06/06/20	MH	Sb	Various Changes - See Request	
Rev 3	327276	06/14/20	MH	Sb	Change Signs 4 & 5 to D5ng	
Rev 4	329078	08/17/20	MH	Sb	Added bank hours and clearance bar height	
Rev 5	337194	03/16/20	MH	Lv	Added sign 7 - Caution automatic door decal	
Rev 6	337496	03/23/20	MH	Lv	Update site plan - update sign one & re-named elevations	

Rev #:	Req#:	Date:	Req. By:	Drawn By:
Rev 7	000000	00/00/00	XXX	XXX
Rev 8	000000	00/00/00	XXX	XXX
Rev 9	000000	00/00/00	XXX	XXX
Rev 10	000000	00/00/00	XXX	XXX

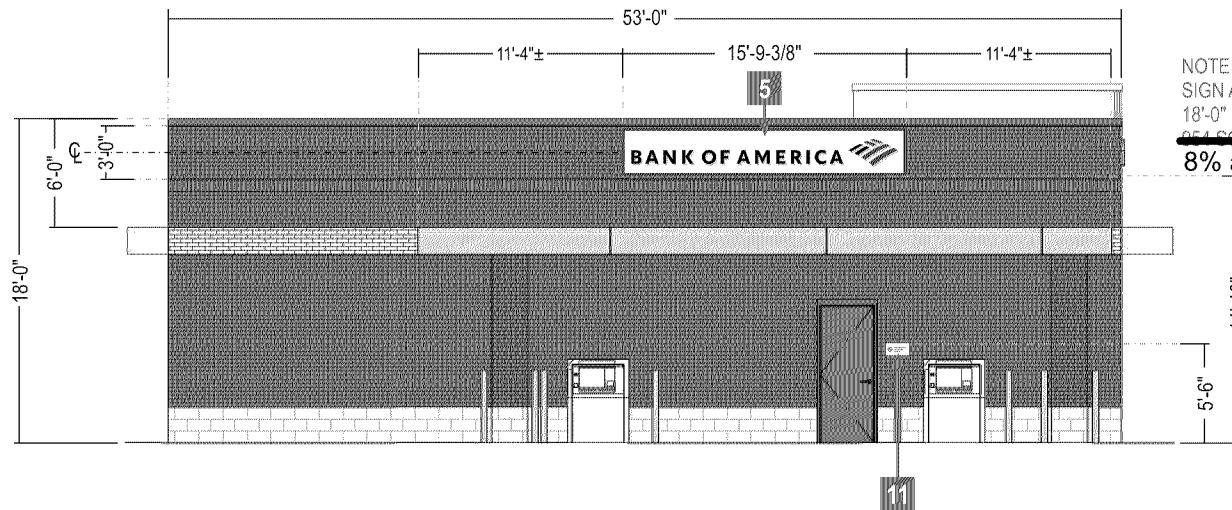
APPROVED
Zoning Review Only
04/20/2021 NMJ



NOTE:
SIGN AREA CALCULATIONS
18'-0" HEIGHT x 80'-0" WIDTH = 1440 SQ FT FACIA

SECONDARY ELEVATION (SOUTH) 4% allowed = 58 square feet

SCALE: 1/16"=1'-0"



NOTE:
SIGN AREA CALCULATIONS
18'-0" HEIGHT x 53'-0" WIDTH = 954 SQFT
8% allowed = 76 square feet

PRIMARY ELEVATION (WEST)

SCALE: 3/32"=1'-0"

Drawing prepared by:

ELEVATION

Drawing prepared for:

Location:
611 W 98th St.
Bloomington, MN 55420-4715

Proj #:
4305
Loc #:
6110

BANK OF AMERICA

File Path:
Active\BANKS\B\Bank Of America\2020\Locations\4305_6110_Bloomington_MN_R6.cdr

Rev #:	Req#:	Date:	Req. By:	Drawn By:	Revision Description:	Drawings are the exclusive property of STRATUS. Any unauthorized use or duplication is not permitted.
Original	326276	05/08/20	MH	Sb		
Rev 1	326745	05/27/20	MH	NPP	Rev Sign1 and 2 - Ltrs on Backer, plus addition changes.	
Rev 2	327028	06/06/20	MH	Sb	Various Changes - See Request	
Rev 3	327276	06/14/20	MH	Sb	Change Signs 4 & 5 to D5ng	
Rev 4	329078	08/17/20	MH	Sb	Added bank hours and clearance bar height	
Rev 5	337194	03/16/20	MH	Lv	Added sign 7 - Caution automatic door decal	
Rev 6	337496	03/23/20	MH	Lv	Update site plan - update sign one & re-named elevations	
Rev #:	Req#:	Date:	Req. By:	Drawn By:		
Rev 7	000000	00/00/00	XXX	XXX		
Rev 8	000000	00/00/00	XXX	XXX		
Rev 9	000000	00/00/00	XXX	XXX		
Rev 10	000000	00/00/00	XXX	XXX		

CASE #PL2021-72

APPROVED
Zoning Review Only
04/20/2021 NMJ

STRUCTURAL STEEL SPECIFICATIONS:

- SUPPORT MEMBERS SHALL BE FREE FROM DEFECTS. TUBE SHALL MEET ASTM A500 GRADE B, WITH A MINIMUM YIELD STRENGTH OF 46000 PSI. PIPE SHALL MEET ASTM A53 GRADE B, WITH A MINIMUM YIELD STRENGTH OF 35000 PSI. PLATE AND ANGLE SHALL MEET ASTM A36.
- STRUCTURAL BOLTS SHALL BE ZINC COATED A325 UNLESS OTHERWISE NOTED.
- WELDS SHALL BE MADE WITH E70XX ELECTRODES BY PERSONS QUALIFIED IN ACCORDANCE WITH AWS STANDARDS WITHIN THE PAST TWO YEARS.
- REINFORCING BARS SHALL CONFORM TO ASTM A615 GRADE 60 WITH DEFORMATIONS IN ACCORDANCE WITH ASTM A-305. WELDING OF REINFORCING BARS IS PROHIBITED.
- ANCHOR BOLTS SHALL BE ASTM F1554-07 GRADE 55 ROUND STOCK. EXPOSED SURFACES SHALL BE GALVANIZED OR HAVE BITUMINOUS COATING TO PREVENT CORROSION.

NOTE: SIGN IS TO BE WIRED WITH 14 GAGE STRANDED 1,000 WIRE THHN PER DIAGRAM ON BALLAST. ELECTRICAL LEADS TO BE 14 GAGE SOLID 600 V WIRE THHN. SIGN MUST BE GROUNDED WITH 14 GAGE SOLID 600 V GREEN WIRE THHN.

THIS SIGN IS INTENDED TO BE INSTALLED IN ACCORDANCE WITH THE REQUIREMENTS OF ARTICLE 600 OF THE NATIONAL ELECTRICAL CODE AND/OR OTHER APPLICABLE LOCAL CODES. THIS INCLUDES PROPER GROUNDING AND BONDING OF SIGN.

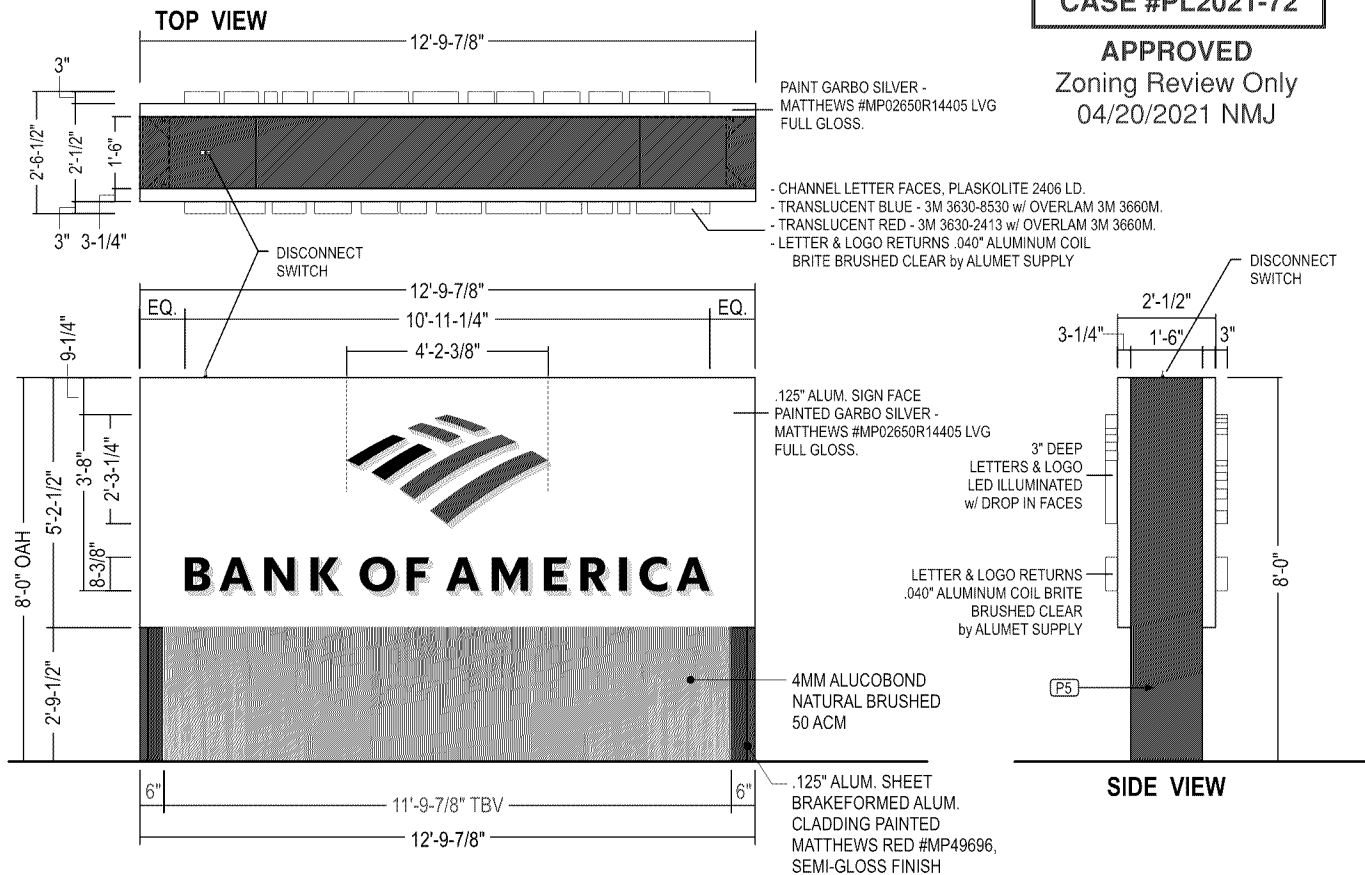
SIGN INTERIOR TO BE PAINTED FLAT WHITE FOR MAXIMUM REFLECTIVITY

PROTECT ANCHOR BOLTS, NUTS, AND WASHERS FROM CORROSION WITH BITUMINOUS COATING

USE WHITE SILICONE TO CONCEAL LIGHT LEAKS

TOLERANCE: $\pm 1/16"$ ON ALL DIMENSIONS

THIS SIGN TO BEAR THIS MARK



1 B4.1-FWng - 8'-0" Monument with Foundation 66.8 SQ FT

SCALE: 1/4"=1'-0"

QTY: 1

STANDARD SPECS - SEE COLOR SPECIFICATION LIBRARY

NOTE: PENDING CITY COUNCIL APPROVAL

SIGN #1 NOTE:

10'-0" Setback from ROW to Leading Edge of Sign from 98th Street and Driveway. Pending City Council Approval.



FIELD VERIFICATION IS REQUIRED FOR ALL GROUND SIGNS TO ENSURE THAT THE RECOMMENDED SIGN WILL FIT IN THE RECOMMENDED LOCATION, TAKING INTO ACCOUNT ALL SET-BACKS, OBSTRUCTIONS, UNDERGROUND UTILITIES, ETC. IF A PROBLEM IS DETECTED BY THE FIELD VERIFICATION, AN IFR SHOULD BE SUBMITTED FOR MODIFICATION BY MONIGLE ASSOCIATES PRIOR TO ANY MANUFACTURING. INSTALL NEW SIGNAGE USING EXISTING PRIMARY ELECTRICAL. VERIFY IF ADDITIONAL CIRCUITS ARE REQUIRED FOR NEW SIGN. RESTORE GROUND MATERIAL TO BASE OF NEW SIGN.

Drawing prepared by:

RECOMMENDATION

Drawing prepared for:

Location: 611 W 98th St.
Bloomington, MN 55420-4715
File Path: Active\BANKS\B\Bank Of America\2020\Locations\4305_6110_Bloomington_MN_R6.cdr

Proj #: 4305
Loc #: 6110

BANK OF AMERICA



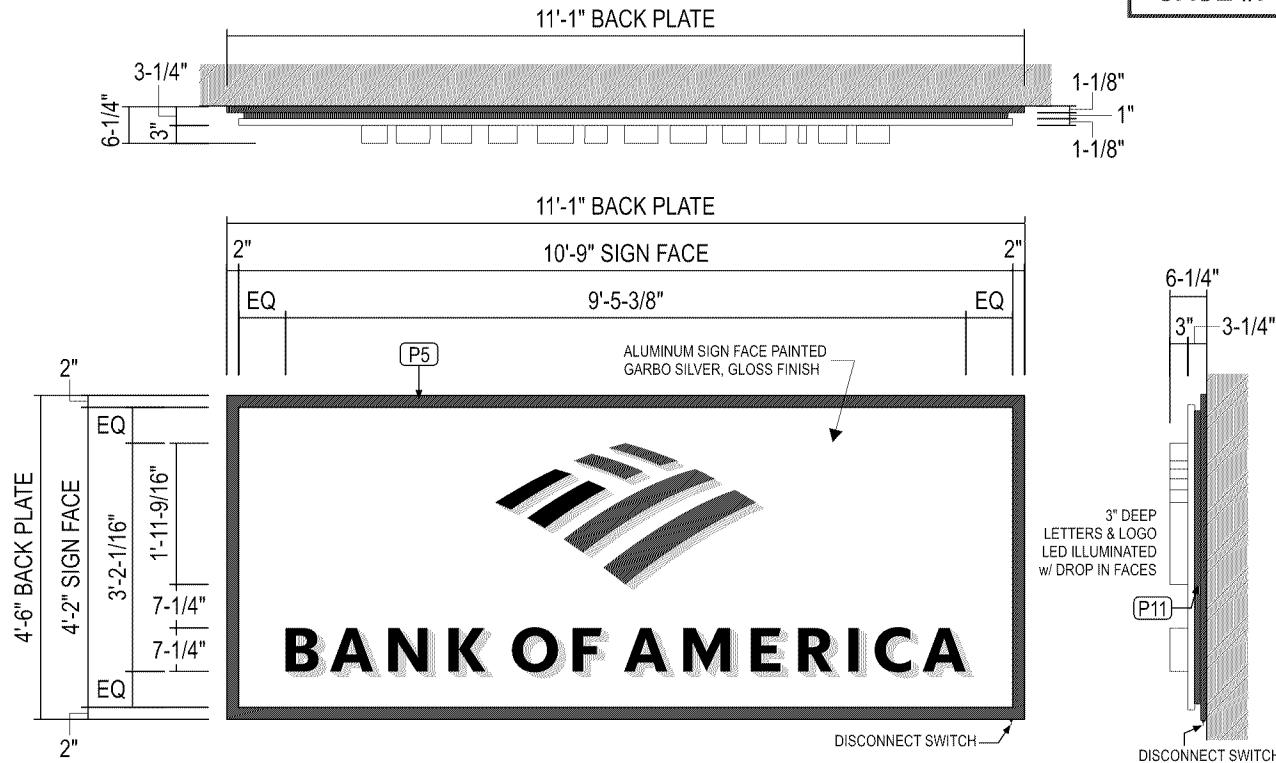
Rev #:	Req#:	Date:	Req. By:	Drawn By:	Revision Description:	Drawings are the exclusive property of STRATUS. Any unauthorized use or duplication is not permitted.
Original	326276	05/08/20	MH	Sb		
Rev 1	326745	05/27/20	MH	NPP	Rev Sign1 and 2 - Ltrs on Backer, plus addition changes.	
Rev 2	327028	06/06/20	MH	Sb	Various Changes - See Request	
Rev 3	327276	06/14/20	MH	Sb	Change Signs 4 & 5 to D5ng	
Rev 4	329078	08/17/20	MH	Sb	Added bank hours and clearance bar height	
Rev 5	337194	03/16/20	MH	Lv	Added sign 7 - Caution automatic door decal	
Rev 6	337496	03/23/20	MH	Lv	Update site plan - update sign one & re-named elevations	

Rev #:	Req#:	Date:	Req. By:	Drawn By:
Rev 7	000000	00/00/00	XXX	XXX
Rev 8	000000	00/00/00	XXX	XXX
Rev 9	000000	00/00/00	XXX	XXX
Rev 10	000000	00/00/00	XXX	XXX

Pg. 7



CASE #PL2021-72

APPROVED
Zoning Review Only
04/20/2021 NMJ

125" ALUMINUM BACKING SHEET.
1"x ALUMINUM TUBE FRAME AT PERIMETER OF BACKING SHEET.
HEADER PANEL TO HINGE w/ S.S. PIANO HINGE.
SIGN FACE TO BE 125" ALUMINUM FORM AS SHOWN. CHEM WELD 1"x1"x125" ALUMINUM TUBE FRAME AT PERIMETER TO FORM SIGN BOX.
125" ALUMINUM ANGLE FRAME.

DETAIL VIEW

SCALE: 1 1/2"=1'-0"

LETTER FACE TO BE 1/2" ACRYLIC. ROUTE 3/8" FROM BACK TO FRONT LEAVING A 1/8" THICK BY 5/32" WIDE "SHOULDER" AT THE FACE. FIRST SURFACE DECORATE w/ B&A BLUE/RED TRANSLUCENT FILM w/ OVER LAMINATE. EXPOSED RETURNS TO HAVE A MILL FINISH. SECURE w/ 3/8" SHORT SHANK FLATHEAD S.S. SCREWS INTO CENTER OF 3/8" ACRYLIC FACE RETURN. PRE-DRILL ONLY TO SCREW DEPTH TO PREVENT TELEGRAPHING.

DETAIL VIEW

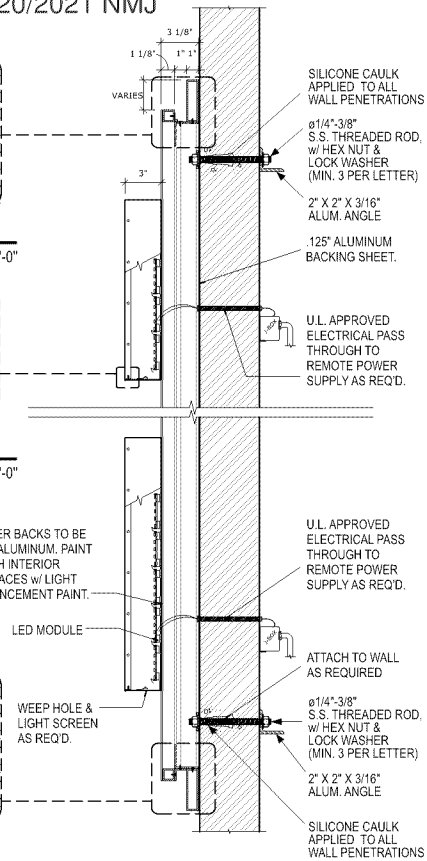
SCALE: 6"=1'-0"

LETTER RETURNS TO BE .040" ALUMINUM COIL BRITE BRUSHED CLEAR BY ALUMET SUPPLY. FORM AS SHOWN.

LETTER BACKS TO BE .090" ALUMINUM. PAINT FINISH INTERIOR SURFACES w/ LIGHT ENHANCEMENT PAINT.
LED MODULE
WEEP HOLE & LIGHT SCREEN AS REQ'D.
125" ALUMINUM ANGLE FRAME.
1"x1" ALUMINUM ANGLE ON BOTTOM OF SIGN BOX. CHEM WELD TO 1"x1" TUBE FRAME. MECHANICALLY ATTACH TO 2"x2" ANGLE w/ COUNTERSUNK FLATHEAD S.S. SCREWS.

DETAIL VIEW

SCALE: 1 1/2"=1'-0"



VERTICAL SECTION

SCALE: 3/4"=1'-0"

DESIGN LOADS:
115 MPH WIND LOAD
RISK CATEGORY II, EXPOSURE C.
2015 INTERNATIONAL
BUILDING CODE, SECTION 16
WIND LOAD, ASCE 7-10

2 C3ng - ILLUMINATED CHANNEL LETTERS ON A NON-ILLUM. BACKER 49.89 SQ FT

SIDE VIEW

SCALE: 3/8"=1'-0"

QTY: 1

STANDARD SPECS - SEE COLOR SPECIFICATION LIBRARY

MATERIAL SPECIFICATIONS

PAINT

RED - MATTHEWS RED #MP49696, AKZO-NOBEL #SIGN 20129.
DK GRAY - (PMS 425) - MATTHEWS #MP58477
GARBO SILVER - MATTHEWS #MP02650R14405 LVG FULL GLOSS.

FILM

TRANSLUCENT BLUE - 3M 3630-8530 w/ OVERLAM 3M 3660M.
TRANSLUCENT RED - 3M 3630-2413 w/ OVERLAM 3M 3660M.

ACRYLIC

CHANNEL LETTER FACES, PLASKOLITE 2406 LD.

ALUMINUM

LETTER & SYMBOL RETURNS, .040" ALUMINUM COIL BRITE
BRUSHED CLEAR BY ALUMET SUPPLY.

WALL TYPE	PREFERRED FOR ALL WALL TYPES WHEN POSSIBLE	EIFS WALL W/ FOAM INSULATION
SECTION		
ANCHOR TYPE	ø1/4"-3/8" THREADED ROD	ø1/4"-3/8" THREADED ROD W/ ALUMINUM OR PVC COMPRESSION SLEEVE

Drawing prepared by:

RECOMMENDATION

Drawing prepared for:

Location:
611 W 98th St.
Bloomington, MN 55420-4715

Proj #:
4305
Loc #:
6110

File Path:

Active\BANKS\B\Bank Of America\2020\Locations\4305_6110_Bloomington_MN_R6.cdr

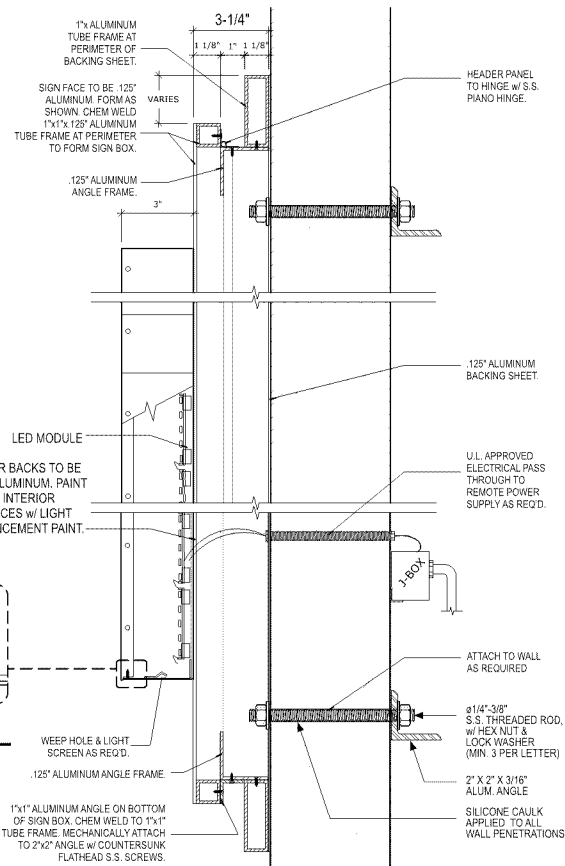
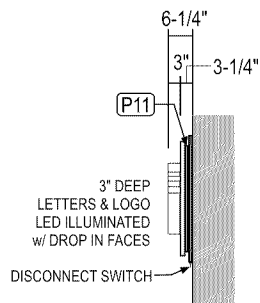
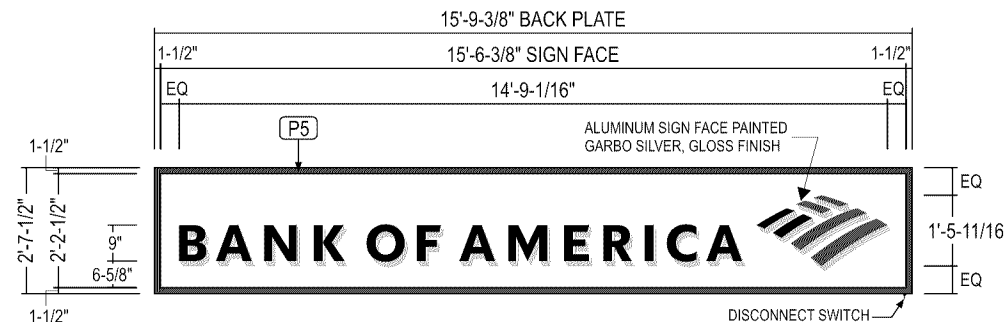
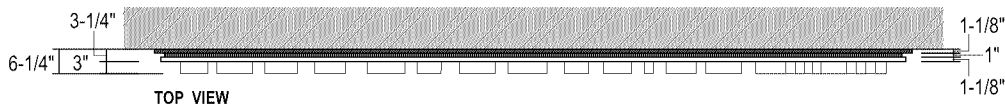
BANK OF AMERICA



Rev #:	Req#:	Date:	Req. By:	Drawn By:	Revision Description:	Drawings are the exclusive property of STRATUS. Any unauthorized use or duplication is not permitted.
Original	326276	05/08/20	MH	Sb		
Rev 1	326745	05/27/20	MH	NPP	Rev Sign1 and 2 - Ltrs on Backer, plus addition changes.	
Rev 2	327028	06/06/20	MH	Sb	Various Changes - See Request	
Rev 3	327276	06/14/20	MH	Sb	Change Signs 4 & 5 to D5ng	
Rev 4	329078	08/17/20	MH	Sb	Added bank hours and clearance bar height	
Rev 5	337194	03/16/20	MH	Lv	Added sign 7 - Caution automatic door decal	
Rev 6	337496	03/23/20	MH	Lv	Update site plan - update sign one & re-named elevations	

Rev #:	Req#:	Date:	Req. By:	Drawn By:
Rev 7	000000	00/00/00	XXX	XXX
Rev 8	000000	00/00/00	XXX	XXX
Rev 9	000000	00/00/00	XXX	XXX
Rev 10	000000	00/00/00	XXX	XXX

Pg. 8



LETTER FACE TO BE 1/2\" ACRYLIC.
ROUTE 3/8\" FROM BACK TO FRONT
LEAVING A 1/8\" THICK BY 5/32\" WIDE
"SHOULDER" AT THE FACE. FIRST
SURFACE DECORATE w/ BOLA
BLUERED TRANSLUCENT FILM w/
OVER LAMINATE. EXPOSED
RETURNS TO HAVE A MILL FINISH.
SECURE w/ 3/8\" SHORT SHANK
FLATHEAD S.S. SCREWS INTO
CENTER OF 3/8\" ACRYLIC FACE.
RETURN. PRE-DRILL ONLY TO SCREW
DEPTH TO PREVENT TELEGRAPHING.

LETTER RETURNS TO BE .040\"
ALUMINUM COIL BRITE BRUSHED
CLEAR BY ALUMET SUPPLY FORM
AS SHOWN.

DETAIL VIEW
SCALE: 1/2\"=1'-0\"

DESIGN LOADS:
115 MPH WIND LOAD
RISK CATEGORY II, EXPOSURE C.
2015 INTERNATIONAL BUILDING
CODE, ASCE 7-10

VERTICAL SECTION
SCALE: 1 1/2\"=1'-0\"

3 4 5 D5ng - 9" ILLUMINATED CHANNEL LETTERS on NON-ILLUM. BACKER PANEL 41.42 SQ FT

QTY: 3

STANDARD SPECS - SEE COLOR SPECIFICATION LIBRARY

MATERIAL SPECIFICATIONS

PAINT

RED - MATTHEWS RED #MP49696, AKZO-NOBEL #SIGN 20129.
DK GRAY - (PMS 425) - MATTHEWS #MP58477
GARBO SILVER - MATTHEWS #MP02650R14405 LVG FULL GLOSS.

FILM

TRANSLUCENT BLUE - 3M 3630-8530 w/ OVERLAM 3M 3660M.
TRANSLUCENT RED - 3M 3630-2413 w/ OVERLAM 3M 3660M.

ACRYLIC

CHANNEL LETTER FACES, PLASKOLITE 2406 LD.

ALUMINUM

LETTER & SYMBOL RETURNS, .040\" ALUMINUM COIL BRITE
BRUSHED CLEAR BY ALUMET SUPPLY.

THIS SIGN IS INTENDED TO BE
INSTALLED IN ACCORDANCE WITH
THE REQUIREMENTS OF ARTICLE 600
OF THE NATIONAL ELECTRICAL CODE
AND/OR OTHER APPLICABLE LOCAL
CODES. THIS INCLUDES PROPER
GROUNDING AND BONDING OF SIGN.

TOLERANCE: $\pm 1/16$ " ON
ALL DIMENSIONS

USE WHITE SILICONE TO
CONCEAL LIGHT LEAKS

WALL TYPE	PREFERRED FOR ALL WALL TYPES WHEN POSSIBLE	EIFS WALL W/ FOAM INSULATION
SECTION		
ANCHOR TYPE	$\phi 1/4$ "-3/8" THREADED ROD	$\phi 1/4$ "-3/8" THREADED ROD W/ ALUMINUM OR PVC COMPRESSION SLEEVE

Drawing prepared by:

RECOMMENDATION

Drawing prepared for:

Location: 611 W 98th St.
Bloomington, MN 55420-4715
File Path: Active\BANKS\B\Bank Of America\2020\Locations\4305_6110_Bloomington_MN_R6.cdr

Proj #: 4305
Loc #: 6110

BANK OF AMERICA

Rev #:	Req#:	Date:	Req. By:	Drawn By:	Revision Description:	Drawings are the exclusive property of STRATUS. Any unauthorized use or duplication is not permitted.
Original	326276	05/08/20	MH	Sb		
Rev 1	326745	05/27/20	MH	NPP	Rev Sign1 and 2 - Ltrs on Backer, plus addition changes.	
Rev 2	327028	06/06/20	MH	Sb	Various Changes - See Request	
Rev 3	327276	06/14/20	MH	Sb	Change Signs 4 & 5 to D5ng	
Rev 4	329078	08/17/20	MH	Sb	Added bank hours and clearance bar height	
Rev 5	337194	03/16/20	MH	Lv	Added sign 7 - Caution automatic door decal	
Rev 6	337496	03/23/20	MH	Lv	Update site plan - update sign one & re-named elevations	

Rev #:	Req#:	Date:	Req. By:	Drawn By:
Rev 7	000000	00/00/00	XXX	XXX
Rev 8	000000	00/00/00	XXX	XXX
Rev 9	000000	00/00/00	XXX	XXX
Rev 10	000000	00/00/00	XXX	XXX

MATERIAL: White applied vinyl
3M #7725-10

APPLICATION: Apply all vinyl on first surface.

HANDICAP SYMBOL: Handicap symbol to be reverse silkscreened blue field on white 3M #7725-10 vinyl. Symbol of accessibility to reverse out white. Use UV inks manufactured by Sericol or approved equal. Blue field to match PMS 7462C, finish to meet 70% gloss ADA compliance requirements. When required, always apply handicap vinyl to exterior of glass. Use only on Handicap accessible entrance doors.

INSTALL NOTES:

ADA Signage Requirements:

- Doors shall be equipped with Automatic Door decals visible from either side of door (double sided)
- Decals shall be mounted 4'-2" +/- 12" from the floor to center line of decal

Standard Door Vinyl Applications:

- Decal is to be installed 5'-0" from floor to center line of sign
- "Bank of America" vinyl logo to be moved up 5" to accommodate automatic door decal

Decal or sign selection guidelines have been set based on door access and surrounding conditions, field verify existing surrounding wall and card reader conditions prior to install.

CASE #PL2021-72

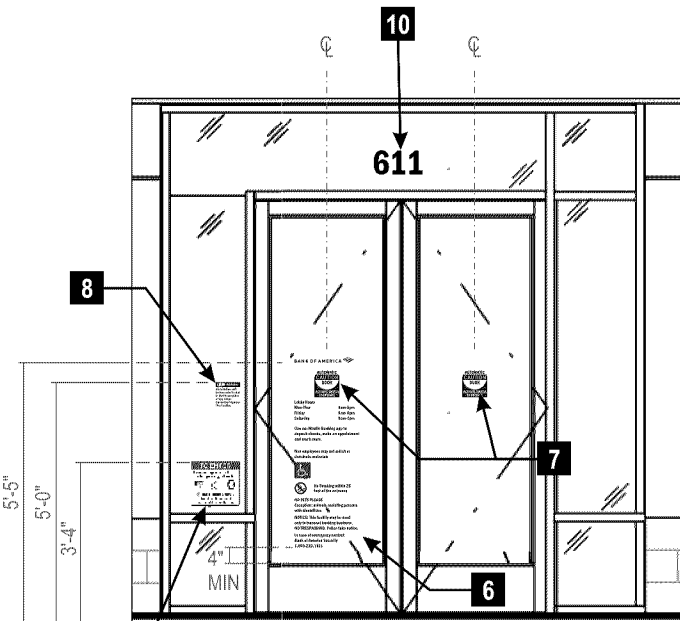


7 AUTOMATIC DOOR DECAL

QTY: 2 SCALE: 1 1/2"=1'-0"

DOUBLE-SIDED PERMANENT ADHESIVE VINYL LABEL. 8"X6" OVERALL SIZE

DECAL TO BE PROVIDED BY SYSTECH AND INSTALLED BY STRATUS



PROPOSED ELEVATION - LAYOUT VIEW

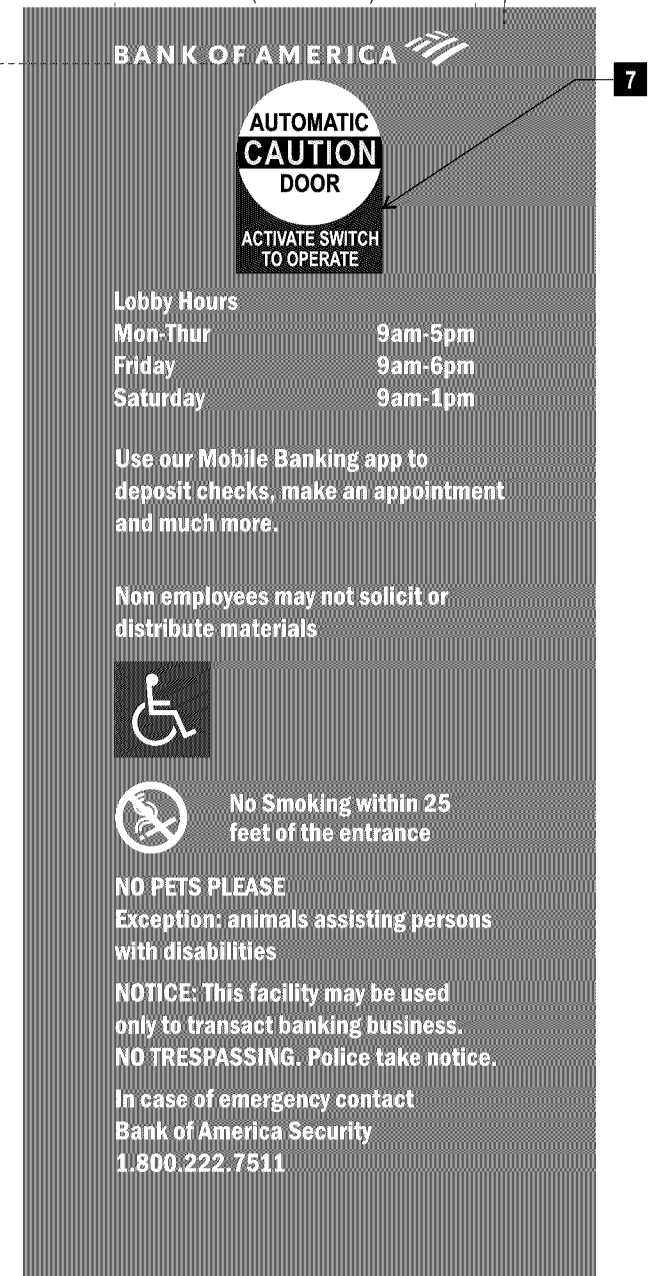
SCALE: 1/4"=1'-0"

3/4"
3/4"
8"
3/4"
3/4"
1-5/16"
1-3/4"
3/4"
1-5/16"
2-1/4"
3/4"
1-5/16"
1"
4"
1"
3"
1"
3/4"
1-5/16"
1"
3/4"
1-5/16"
1"
3/4"
1-5/16"
4"
MIN

6 DOOR VINYL - STANDARD w/ ADA DECAL

QTY: 1

SCALE: 1 1/2"=1'-0"



Drawing prepared by:

RECOMMENDATION

Drawing prepared for:

Location: 611 W 98th St.
Bloomington, MN 55420-4715
Proj #: 4305
Loc #: 6110

File Path: Active\BANKS\B\Bank Of America\2020\Locations\4305_6110_Bloomington_MN_R6.cdr

BANK OF AMERICA

Rev #:	Req#:	Date:	Req. By:	Drawn By:	Revision Description:	Drawings are the exclusive property of STRATUS. Any unauthorized use or duplication is not permitted.
Original	326276	05/08/20	MH	Sb		
Rev 1	326745	05/27/20	MH	NPP	Rev Sign1 and 2 - Ltrs on Backer, plus addition changes.	
Rev 2	327028	06/06/20	MH	Sb	Various Changes - See Request	
Rev 3	327276	06/14/20	MH	Sb	Change Signs 4 & 5 to D5ng	
Rev 4	329078	08/17/20	MH	Sb	Added bank hours and clearance bar height	
Rev 5	337194	03/16/20	MH	Lv	Added sign 7 - Caution automatic door decal	
Rev 6	337496	03/23/20	MH	Lv	Update site plan - update sign one & re-named elevations	

Rev #:	Req#:	Date:	Req. By:	Drawn By:
Rev 7	000000	00/00/00	XXX	XXX
Rev 8	000000	00/00/00	XXX	XXX
Rev 9	000000	00/00/00	XXX	XXX
Rev 10	000000	00/00/00	XXX	XXX

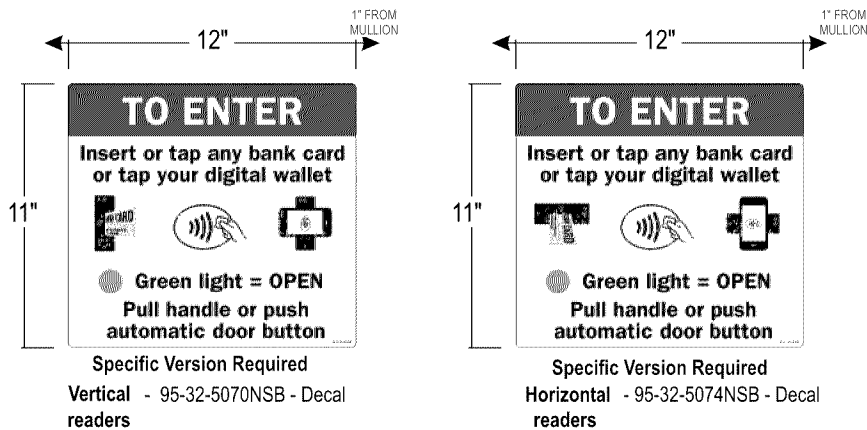


8 SECURITY CAMERA VINYL

QTY: 1

SCALE: 1:3

VINYL SHOULD BE MOUNTED 1" FROM MULLION
FIRST SURFACE APPLICATION



9 CARD READER DECAL AUTOMATIC DOORS

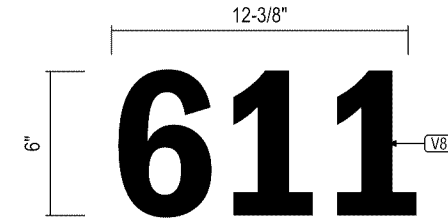
QTY: 1

SCALE: 1-1/2"=1'-0"

FIRST SURFACE APPLICATION

- INSTALL HEIGHT: CARD READER DECAL HEIGHT MINIMUM STANDARD IS 40" ABOVE FINISHED FLOOR AND 1 INCH AWAY FROM DOOR MULLION.
DECAL TO BE PROVIDED BY SYSTECH AND INSTALLED BY STRATUS

CASE #PL2021-72

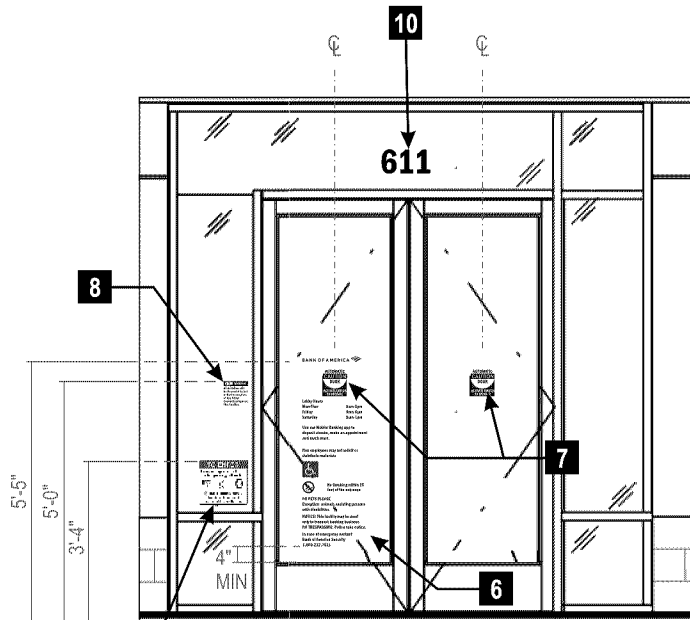


10 WHITE ADDRESS NUMERALS

QTY: 1

SCALE: 1 1/2"=1'-0"

FIRST SURFACE APPLICATION



PROPOSED ELEVATION - LAYOUT VIEW

SCALE: 1/4"=1'-0"

Drawing prepared by:

RECOMMENDATION

Drawing prepared for:

Location: 611 W 98th St.
Bloomington, MN 55420-4715

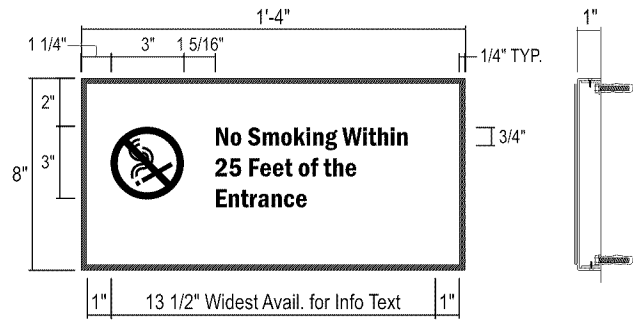
Proj #: 4305

Loc #: 6110

File Path: Active\BANKS\B\Bank Of America\2020\Locations\4305_6110_Bloomington_MN_R6.cdr

BANK OF AMERICA

Rev #:	Req#:	Date:	Req. By:	Drawn By:	Revision Description:	Drawings are the exclusive property of STRATUS. Any unauthorized use or duplication is not permitted.
Original	326276	05/08/20	MH	Sb		
Rev 1	326745	05/27/20	MH	NPP	Rev Sign1 and 2 - Ltrs on Backer, plus addition changes.	
Rev 2	327028	06/06/20	MH	Sb	Various Changes - See Request	
Rev 3	327276	06/14/20	MH	Sb	Change Signs 4 & 5 to D5ng	
Rev 4	329078	08/17/20	MH	Sb	Added bank hours and clearance bar height	
Rev 5	337194	03/16/20	MH	Lv	Added sign 7 - Caution automatic door decal	
Rev 6	337496	03/23/20	MH	Lv	Update site plan - update sign one & re-named elevations	



MATERIAL SPECIFICATIONS

PAINT

RED - MATTHEWS RED #MP49696, AKZO-NOBEL #SIGN 20129.
GARBO SILVER - MATTHEWS #MP02650R14405 LVG FULL GLOSS.

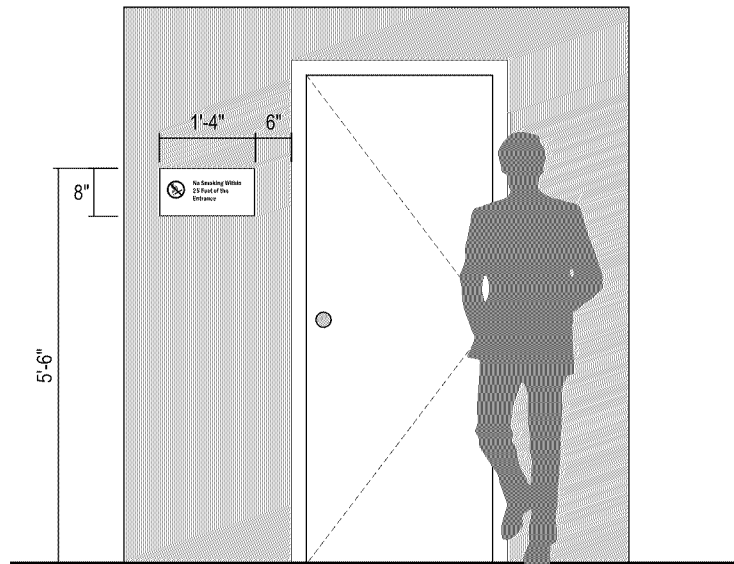
FILM

TRANSLUCENT BLUE - 3M 3630-8530 w/ OVERLAM 3M 3660M.
OPAQUE WHITE - 3M 7725-10.

11 NO SMOKING PLAQUE - INFORMATIONAL SIGN (0.89 S.F.)

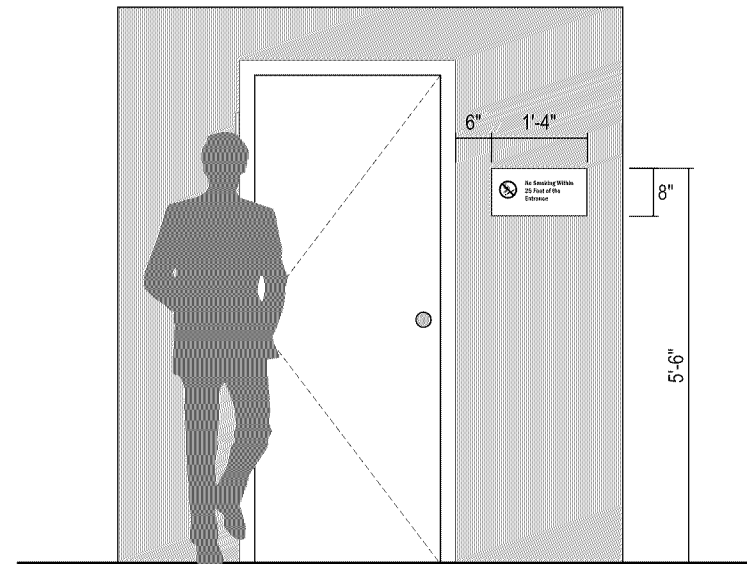
QTY: 1

SCALE: 1 1/2"=1'-0"



NO SMOKING PLAQUE - TYPICAL INSTALLATION (EXTERIOR)

SCALE: 3/8"=1'-0"



NO SMOKING PLAQUE - TYPICAL INSTALLATION (EXTERIOR)

SCALE: 3/8"=1'-0"

Drawing prepared by:

RECOMMENDATION

Drawing prepared for:

Location:
611 W 98th St.
Bloomington, MN 55420-4715

Proj #:
4305
Loc #:
6110

BANK OF AMERICA

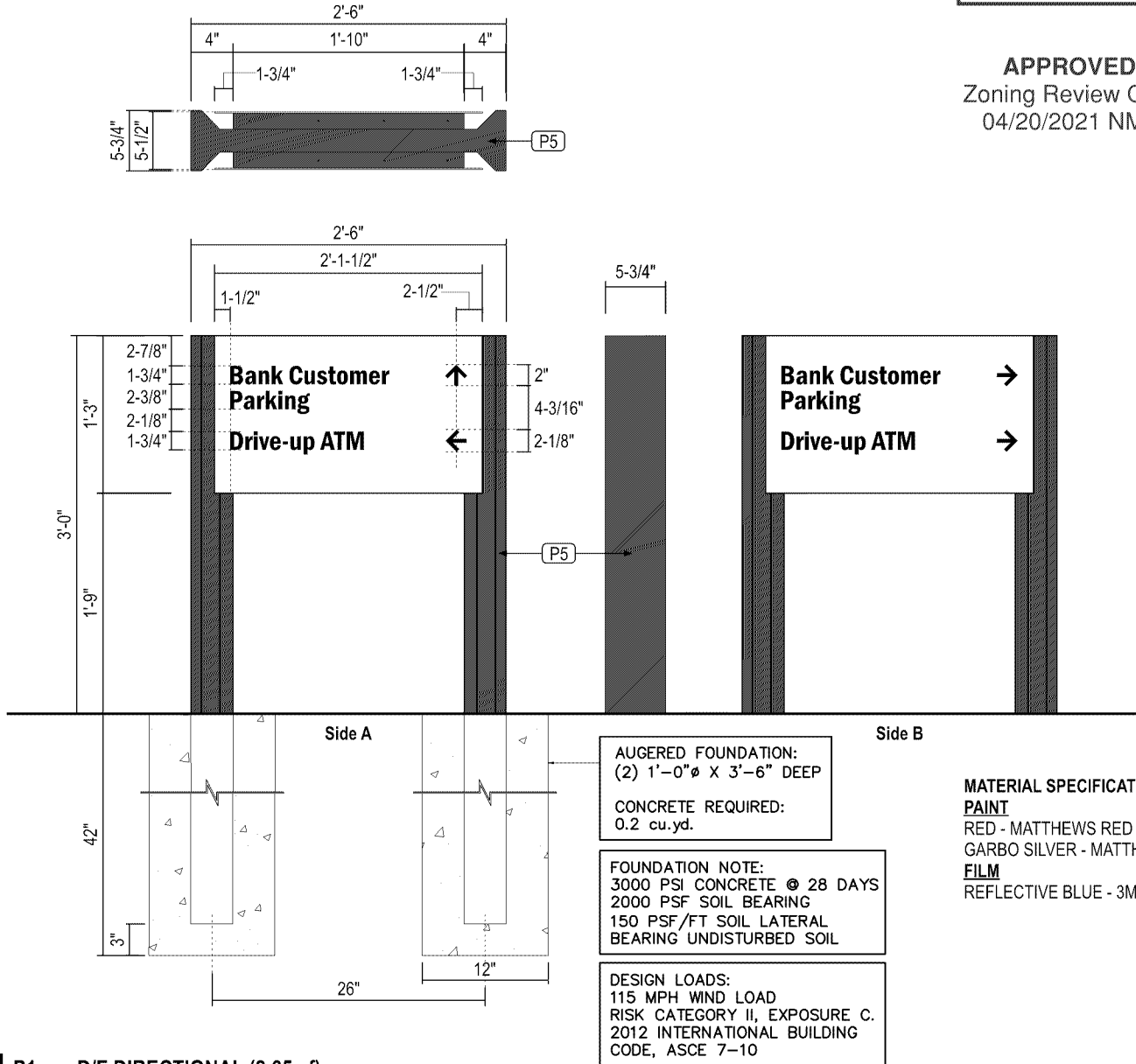
File Path:
Active\BANKS\B\Bank Of America\2020\Locations\4305_6110_Bloomington_MN_R6.cdr

Rev #:	Req#:	Date:	Reg. By:	Drawn By:	Revision Description:	Drawings are the exclusive property of STRATUS. Any unauthorized use or duplication is not permitted.				
Original	326276	05/08/20	MH	Sb		Rev #:	Req#:	Date:	Reg. By:	Drawn By:
Rev 1	326745	05/27/20	MH	NPP	Rev Sign1 and 2 - Ltrs on Backer, plus addition changes.	Rev 7	000000	00/00/00	XXX	XXX
Rev 2	327028	06/06/20	MH	Sb	Various Changes - See Request	Rev 8	000000	00/00/00	XXX	XXX
Rev 3	327276	06/14/20	MH	Sb	Change Signs 4 & 5 to D5ng	Rev 9	000000	00/00/00	XXX	XXX
Rev 4	329078	08/17/20	MH	Sb	Added bank hours and clearance bar height	Rev 10	000000	00/00/00	XXX	XXX
Rev 5	337194	03/16/20	MH	Lv	Added sign 7 - Caution automatic door decal					
Rev 6	337496	03/23/20	MH	Lv	Update site plan - update sign one & re-named elevations					

APPROVED
Zoning Review Only
04/20/2021 NMJ

DIRECTIONAL COPY AND ARROWS
REFLECTIVE FILM 3M #680-75 BLUE.

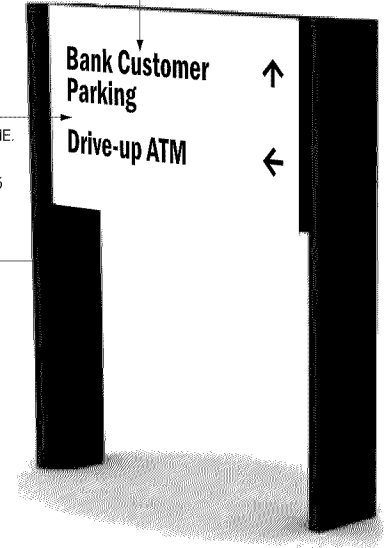
TYPEFACE TO BE FRANKLIN
GOTHIC DEMI CONDENSED. VERIFY
ALL COPY PRIOR TO FABRICATION.



.125" ALUMINUM SIGN FACE.
WELD TO ALUM. ANGLE FRAME.
PAINT FINISH GARBO SILVER
MATTHEWS #MP02650 R14405
LVG FULL GLOSS.

.090" BREAK FORMED
ALUMINUM FRAME. FORM
AS SHOWN. CLADDING TO
ATTACH TO SUPPORT TUBE.

PAINT FINISH ALL
EXPOSED SURFACES
MATTHEWS RED #MP49696,
AKZO-NOBEL #SIGN 20129,
SEMI-GLOSS
WELD TO SUPPORT
TUBE VERTICALS.



MATERIAL SPECIFICATIONS

PAINT

RED - MATTHEWS RED #MP49696, AKZO-NOBEL #SIGN 20129, SEMI-GLOSS.
GARBO SILVER - MATTHEWS #MP02650R14405 LVG FULL GLOSS.

FILM

REFLECTIVE BLUE - 3M #680-75 BLUE.

12 P1ng - D/F DIRECTIONAL (2.65 sf)

QTY: 1

STANDARD SPECS - SEE COLOR SPECIFICATION LIBRARY

SCALE: 3/4"=1'-0"

Drawing prepared by:

RECOMMENDATION

Drawing prepared for:

Location: 611 W 98th St.
Bloomington, MN 55420-4715
File Path: Active\BANKS\B\Bank Of America\2020\Locations\4305_6110_Bloomington_MN_R6.cdr

Proj #: 4305
Loc #: 6110

BANK OF AMERICA

Rev #:	Req#:	Date:	Req. By:	Drawn By:	Revision Description:	Drawings are the exclusive property of STRATUS. Any unauthorized use or duplication is not permitted.
Original	326276	05/08/20	MH	Sb		
Rev 1	326745	05/27/20	MH	NPP	Rev Sign1 and 2 - Ltrs on Backer, plus addition changes.	
Rev 2	327028	06/06/20	MH	Sb	Various Changes - See Request	
Rev 3	327276	06/14/20	MH	Sb	Change Signs 4 & 5 to D5ng	
Rev 4	329078	08/17/20	MH	Sb	Added bank hours and clearance bar height	
Rev 5	337194	03/16/20	MH	Lv	Added sign 7 - Caution automatic door decal	
Rev 6	337496	03/23/20	MH	Lv	Update site plan - update sign one & re-named elevations	

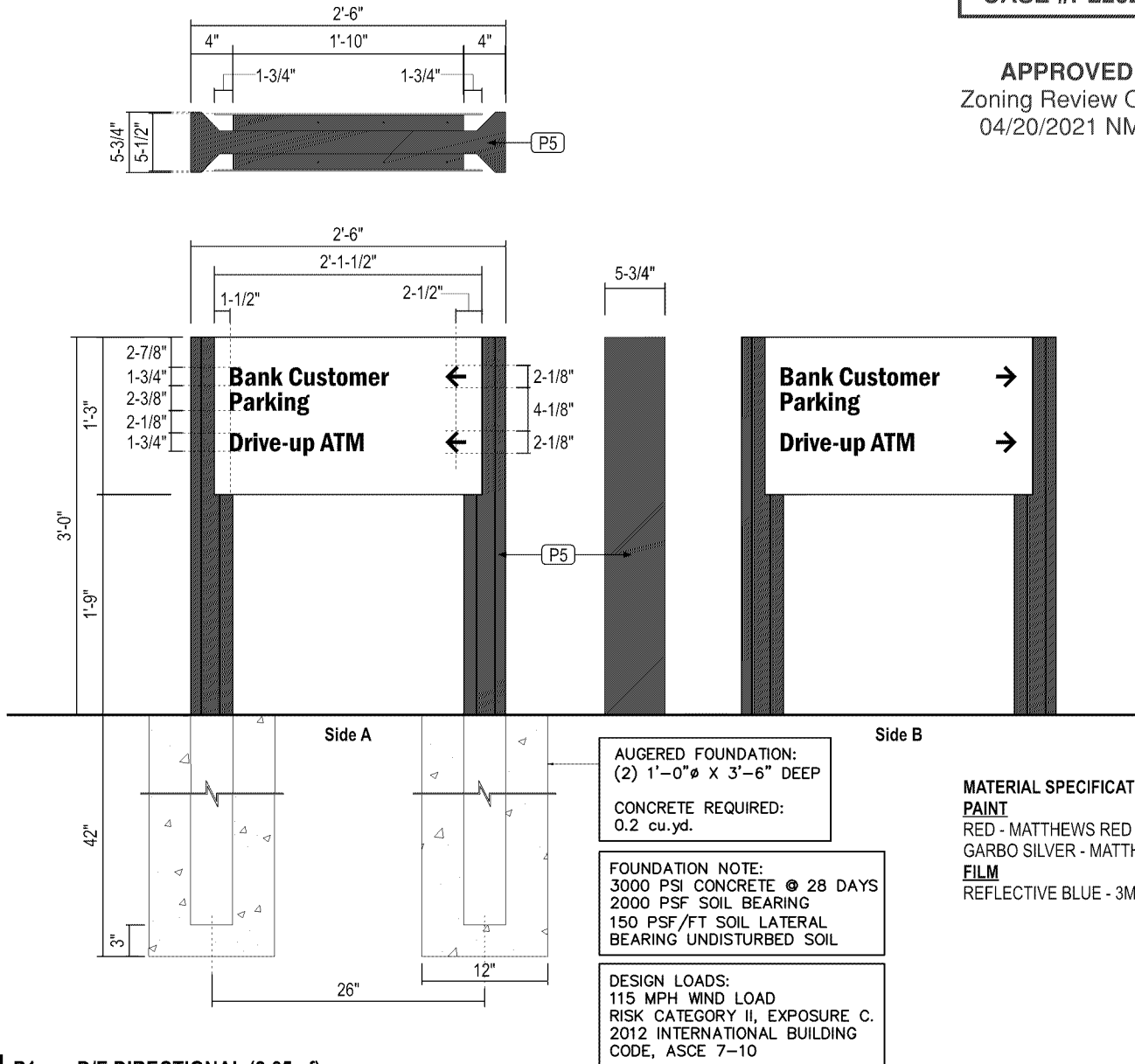
Rev #:	Req#:	Date:	Req. By:	Drawn By:
Rev 7	000000	00/00/00	XXX	XXX
Rev 8	000000	00/00/00	XXX	XXX
Rev 9	000000	00/00/00	XXX	XXX
Rev 10	000000	00/00/00	XXX	XXX

CASE #PL2021-72

APPROVED
Zoning Review Only
04/20/2021 NMJ

DIRECTIONAL COPY AND ARROWS
REFLECTIVE FILM 3M #680-75 BLUE.

TYPEFACE TO BE FRANKLIN
GOTHIC DEMI CONDENSED. VERIFY
ALL COPY PRIOR TO FABRICATION.



.125" ALUMINUM SIGN FACE.
WELD TO ALUM. ANGLE FRAME.

PAINT FINISH GARBO SILVER
MATTHEWS #MP02650 R14405
LVG FULL GLOSS.

.090" BREAK FORMED
ALUMINUM FRAME. FORM
AS SHOWN. CLADDING TO
ATTACH TO SUPPORT TUBE.

PAINT FINISH ALL
EXPOSED SURFACES
MATTHEWS RED #MP49696,
AKZO-NOBEL #SIGN 20129,
SEMI-GLOSS
WELD TO SUPPORT
TUBE VERTICALS.



MATERIAL SPECIFICATIONS

PAINT

RED - MATTHEWS RED #MP49696, AKZO-NOBEL #SIGN 20129, SEMI-GLOSS.
GARBO SILVER - MATTHEWS #MP02650R14405 LVG FULL GLOSS.

FILM

REFLECTIVE BLUE - 3M #680-75 BLUE.

13 P1ng - D/F DIRECTIONAL (2.65 sf)

QTY: 1

STANDARD SPECS - SEE COLOR SPECIFICATION LIBRARY

SCALE: 3/4"=1'-0"

Drawing prepared by:

RECOMMENDATION

Drawing prepared for:

Location:
611 W 98th St.
Bloomington, MN 55420-4715

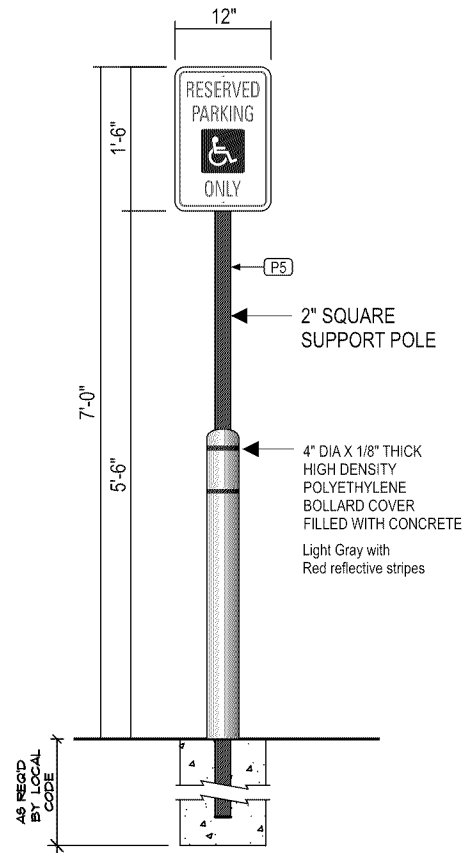
Proj #:
4305

Loc #:
6110

File Path:
Active\BANKS\B\Bank Of America\2020\Locations\4305_6110_Bloomington_MN_R6.cdr

BANK OF AMERICA

Rev #:	Req#:	Date:	Req. By:	Drawn By:	Revision Description:	Drawings are the exclusive property of STRATUS. Any unauthorized use or duplication is not permitted.
Original	326276	05/08/20	MH	Sb		
Rev 1	326745	05/27/20	MH	NPP	Rev Sign1 and 2 - Ltrs on Backer, plus addition changes.	
Rev 2	327028	06/06/20	MH	Sb	Various Changes - See Request	
Rev 3	327276	06/14/20	MH	Sb	Change Signs 4 & 5 to D5ng	
Rev 4	329078	08/17/20	MH	Sb	Added bank hours and clearance bar height	
Rev 5	337194	03/16/20	MH	Lv	Added sign 7 - Caution automatic door decal	
Rev 6	337496	03/23/20	MH	Lv	Update site plan - update sign one & re-named elevations	

**14 ADA - RESERVED PARKING ONLY**

QTY: 2

NOTE: 9'-0" OVERALL POLE HEIGHT

SCALE: 1/2"=1'-0"

**FACE DETAIL**

SCALE: 1 1/2"=1'-0"

Drawing prepared by:

RECOMMENDATION

Drawing prepared for:

Location:
611 W 98th St.
Bloomington, MN 55420-4715

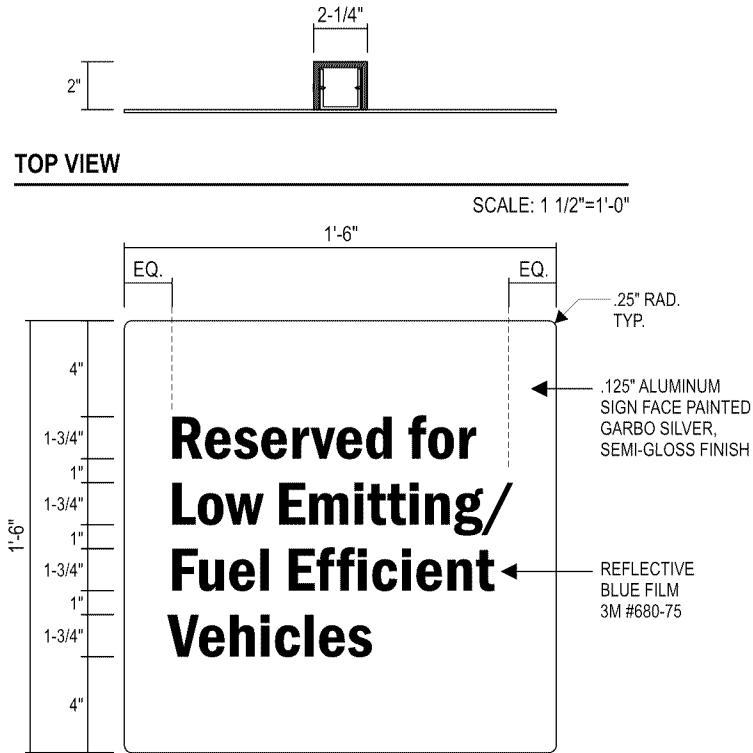
Proj #:
4305
Loc #:
6110

BANK OF AMERICA

File Path:
Active\BANKS\B\Bank Of America\2020\Locations\4305_6110_Bloomington_MN_R6.cdr

Rev #:	Req#:	Date:	Req. By:	Drawn By:	Revision Description:	Drawings are the exclusive property of STRATUS. Any unauthorized use or duplication is not permitted.
Original	326276	05/08/20	MH	Sb		
Rev 1	326745	05/27/20	MH	NPP	Rev Sign1 and 2 - Ltrs on Backer, plus addition changes.	
Rev 2	327028	06/06/20	MH	Sb	Various Changes - See Request	
Rev 3	327276	06/14/20	MH	Sb	Change Signs 4 & 5 to D5ng	
Rev 4	329078	08/17/20	MH	Sb	Added bank hours and clearance bar height	
Rev 5	337194	03/16/20	MH	Lv	Added sign 7 - Caution automatic door decal	
Rev 6	337496	03/23/20	MH	Lv	Update site plan - update sign one & re-named elevations	

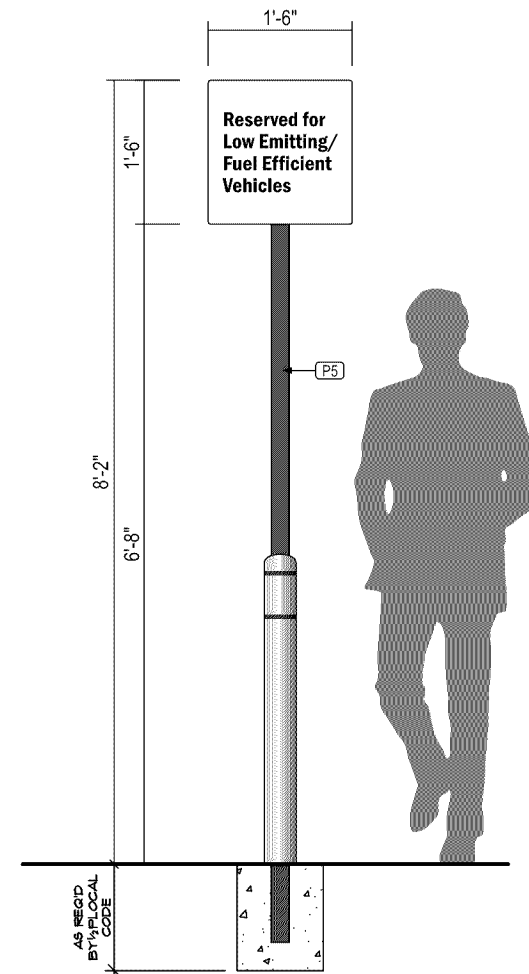
Rev #:	Req#:	Date:	Req. By:	Drawn By:
Rev 7	000000	00/00/00	XXX	XXX
Rev 8	000000	00/00/00	XXX	XXX
Rev 9	000000	00/00/00	XXX	XXX
Rev 10	000000	00/00/00	XXX	XXX



**LOW EMITTING/FUEL EFFICIENT VEHICLES
RP1ng REGULATORY SIGN / FACE DETAIL**

FONT: FRANKLIN GOTHIC DEMI CONDENSED

SCALE: 1 1/2"=1'-0"



**RP1ng POLE MOUNTED REGULATORY - (2.25 sq. ft.)
15 LOW EMITTING/FUEL EFFICIENT VEHICLES**

QTY: 1

SCALE: 1/2"=1'-0"

4" DIA X 1/8" THICK HIGH DENSITY POLYETHYLENE
BOLLARD COVER FILLED WITH CONCRETE.
LIGHT GRAY w/ REFLECTIVE STRIPES.

Drawing prepared by:

RECOMMENDATION

Drawing prepared for:

Location:
611 W 98th St.
Bloomington, MN 55420-4715

Proj #:
4305
Loc #:
6110

BANK OF AMERICA

File Path:
Active\BANKS\B\Bank Of America\2020\Locations\4305_6110_Bloomington_MN_R6.cdr

Rev #:	Req#:	Date:	Req. By:	Drawn By:	Revision Description:	Drawings are the exclusive property of STRATUS. Any unauthorized use or duplication is not permitted.					
Original	326276	05/08/20	MH	Sb							
Rev 1	326745	05/27/20	MH	NPP	Rev Sign1 and 2 - Ltrs on Backer, plus addition changes.	Rev 7	000000	00/00/00	XXX	XXX	
Rev 2	327028	06/06/20	MH	Sb	Various Changes - See Request	Rev 8	000000	00/00/00	XXX	XXX	
Rev 3	327276	06/14/20	MH	Sb	Change Signs 4 & 5 to D5ng	Rev 9	000000	00/00/00	XXX	XXX	
Rev 4	329078	08/17/20	MH	Sb	Added bank hours and clearance bar height	Rev 10	000000	00/00/00	XXX	XXX	
Rev 5	337194	03/16/20	MH	Lv	Added sign 7 - Caution automatic door decal						
Rev 6	337496	03/23/20	MH	Lv	Update site plan - update sign one & re-named elevations						

