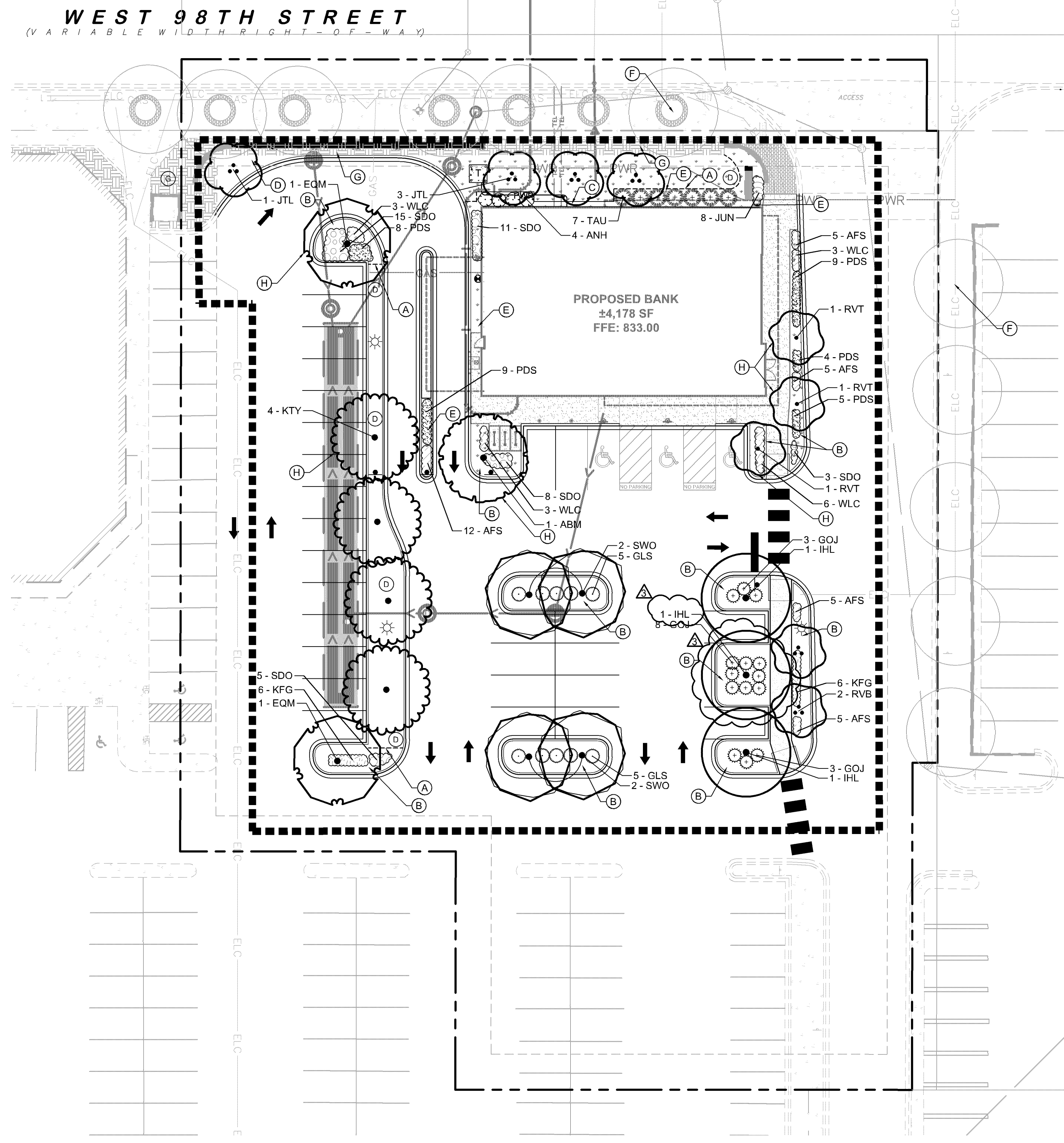


This document, together with the concepts and designs presented herein, is intended only for the specific purpose and client for which it was prepared. Reuse of and improper reliance on this document without written authorization and adaptation by Kimley-Horn and Associates, Inc. shall be without liability to Kimley-Horn and Associates, Inc.



### LANDSCAPE REQUIREMENTS

DEVELOPABLE LANDSCAPE AREA: 55,774 S.F.

REQUIRED TREES: 23 TREES\* = (55,774 S.F. / 2,500)  
PROVIDED TREES: 23 TREES = (23 PROPOSED TREES)

REQUIRED SHRUBS: 56 SHRUBS\* = (55,774 S.F. / 1,000)  
PROVIDED SHRUBS: 80.5 SHRUBS\* = (45 PROPOSED SHRUBS + (142 PROPOSED PERENNIALS/4)

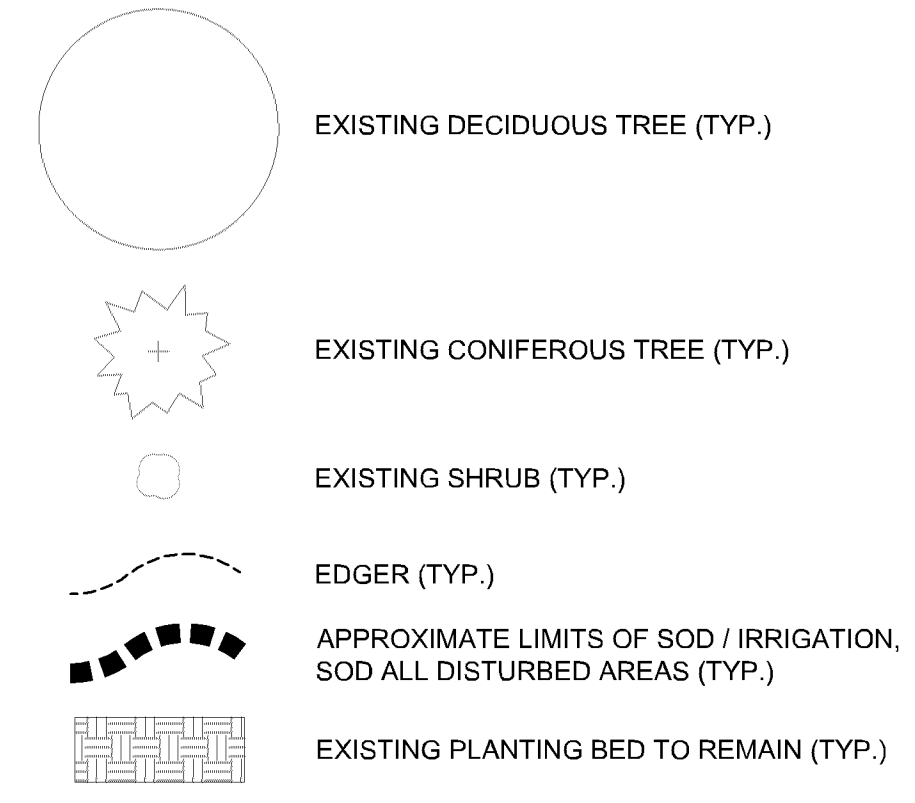
\* 4 PERENNIAL PLANTS EQUAL 1 SHRUB

PARKING ISLAND TREES REQUIRED: ONE DECIDUOUS TREE PER PARKING LOT ISLAND  
PARKING ISLAND TREES PROVIDED: SEE PLAN

**CASE #PL2020-14**

**LANDSCAPING PLAN APPROVED**  
CITY OF BLOOMINGTON, MINNESOTA  
NMJ  
05/11/2021

### LANDSCAPE LEGEND



### LANDSCAPE KEYNOTES

- (A) EDGER (TYP.)
- (B) DOUBLE SHREDDED HARDWOOD MULCH (TYP.)
- (C) MAINTENANCE STRIP (TYP.)
- (D) SOD (TYP.)
- (E) ROCK MULCH (TYP.)
- (F) EXISTING TREE TO REMAIN (TYP.)
- (G) EXISTING PLANTING BED TO REMAIN (TYP.)
- (H) LIMB TREES UP SO NO BRANCHES ARE BELOW 6'-0"

### PLANT SCHEDULE

ORNAMENTAL TREE	CODE	QTY	BOTANICAL NAME	COMMON NAME	CONT	CAL	SIZE	
	JTL	4	SYRINGA RETICULATA	JAPANESE TREE LILAC CLUMP	B & B		6' HT.	
	RVB	2	BETULA NIGRA	RIVER BIRCH MULTI-TRUNK	B & B		6' HT.	
	RVT	3	BETULA NIGRA	RIVER BIRCH SINGLE STEM	B & B		2.5" CAL.	
OVERSTORY TREE	CODE	QTY	BOTANICAL NAME	COMMON NAME	CONT	CAL	SIZE	
	ABM	1	ACER X FREEMANII 'AUTUMN BLAZE'	AUTUMN BLAZE MAPLE	B & B		2.5" CAL.	
	EQM	2	ACER PLATANOIDES 'EMERALD QUEEN'	EMERALD QUEEN MAPLE	B & B		2.5" CAL.	
	IHL	3	GLEDTISIA TRIACANTHOS VAR. INERMIS 'IMPERIAL'	IMPERIAL HONEYLOCUST	B & B		2.5" CAL.	
	KTY	4	GYMNOCLADUS DIOICA 'UMNSYNERGY' TM	TRUE NORTH KENTUCKY COFFEE TREE	B & B		2.5" CAL.	
	SWO	4	QUERCUS BICOLOR	SWAMP WHITE OAK	B & B		2.5" CAL.	
CONIFEROUS SHRUBS	CODE	QTY	BOTANICAL NAME	COMMON NAME	CONT	SPACING	SIZE	SPACING
	GOJ	14	JUNIPERUS VIRGINIANA 'GREY OWL'	GREY OWL JUNIPER	#5 CONT.	4' O.C.		48" o.c.
	TAU	7	TAXUS X MEDIA 'TAUNTONII'	TAUTON YEW	#5 CONT.	5' O.C.		60" o.c.
DECIDUOUS SHRUBS	CODE	QTY	BOTANICAL NAME	COMMON NAME	CONT	SPACING	SIZE	SPACING
	ANH	4	HYDRANGEA ARBORESCENS 'ANNABELLE'	ANNABELLE HYDRANGEA	#5 CONT.	4' O.C.		48" o.c.
	GLS	10	RHUS AROMATICA 'GRO-LOW'	GRO-LOW FRAGRANT SUMAC	#5 CONT.	4' O.C.		48" o.c.
PERENNIALS	CODE	QTY	BOTANICAL NAME	COMMON NAME	CONT	SIZE	SPACING	SPACING
	AFS	32	SEDUM X 'AUTUMN FIRE'	AUTUMN FIRE SEDUM	#1 CONT		18" O.C.	18" o.c.
	JUN	8	HOSTA X 'JUNE'	JUNE HOSTA	#1 CONT		20" O.C.	20" o.c.
	KFG	12	CALAMAGROSTIS X ACUTIFLORA 'KARL FOERSTER'	KARL FOERSTER FEATHER REED GRASS	#1 CONT		30" OC	30" o.c.
	PDS	35	SPOROBOLUS HETEROLEPIS	PRAIRIE DROPSEED	#1 CONT		24" OC	24" o.c.
	SDO	42	HEMEROCALLIS X 'STELLA DE ORO'	STELLA DE ORO DAYLILY	#1 CONT		24" OC	24" o.c.
	WLC	15	NEPETA X FAASSENII 'WALKERS LOW'	WALKERS LOW CATMINT	#1 CONT		30" OC	30" o.c.

NO.	REVISIONS	DATE	BY
1	TREE REPLACEMENT	05/10/2021	BPG
2	TREE REMOVAL	4/29/2021	BPG
3	UPDATED GRADING	4/23/2021	BRJ

**Kimley»Horn**  
© 2020 KIMLEY-HORN AND ASSOCIATES, INC.  
767 EUBANK STREET, SUITE 100, ST. PAUL, MN 55114  
PHONE: 651-445-4187  
WWW.KIMLEY-HORN.COM

KHA PROJECT: 16096506  
DATE: 10/11/2019  
SCALE: AS SHOWN  
DESIGNED BY: RAH/JDR  
DRAWN BY: JDR  
CHECKED BY: RAH

MINNESOTA PROFESSIONAL LANDSCAPE ARCHITECT  
RYAN A. HILLESRED, P.L.A.  
DATE: 11/07/2019 LIC. NO.: 53888

**ISSUED FOR PERMIT - NOT FOR CONSTRUCTION**

**LANDSCAPE PLAN**

**BANK OF AMERICA**  
PREPARED FOR  
**NELSON ARCHITECTS**  
BLOOMINGTON, MN

SHEET NUMBER  
**L100**