

Armstrong & Sons LLC
3960 Painted Sky Trail
Chaska, MN 55318

APPROVED
Zoning Review Only
05/12/2021 NMJ

5/11/21

Property Location:
715 E. 78th
Bloomington MN 55420

For our USD we are looking to install a Subway sign on the exterior wall of the Walmart at 700 American Blvd E in Bloomington MN. This is a multi-tenant building. This is subject to the sign district below.

- Property is subject to the requirements of the Class V Sign District – Section 19.114 of the City Code.
- Wall Signs
 - East Elevation (primary)
 - * Walmart Sign – 210 square feet
 - * Market Sign – 80 square feet
 - * Subway Sign – 20.2 square feet
 - North Elevation (primary)
 - * Walmart Sign – 205 square feet
 - * Pharmacy Sign – 34 square feet
- Freestanding Signs (pylon)
 - American Boulevard – 28 feet in height, 100 square feet in area
 - I-494 – 45 feet in height, 175 square feet in area
- Incidental Signs (Sec. 19.117)
 - East Elevation
 - * Pickup Sign – 12 square feet
 - North Elevation
 - * Pharmacy Drive-Through – 12 square feet
 - * Pickup Sign – 12 square feet
- Directional Signs – 10 total signs per Section 19.116 of City Code

Adam Armstrong - - President

5/11/21

5/11/2021

CASE #PL2021-103

APPROVED
Zoning Review Only
05/12/2021 NMJ

THROUGH WALL PROTECTION TUBE
FURNISHED BY WALMART
INSTALLED BY SIGN CONTRACTOR
INSTALL PER MFR
RECOMMENDATIONS
FULL BED OF MULTI-COMPONENT
SEALANT AT PERIMETER OF CONDUIT
BY SIGN INSTALLER
INSTALL LETTER BACK PRIOR TO
INSTALLATION BY SIGN INSTALLER
PVC SPACER TO PREVENT
COMPRESSION OF WALL PANEL
3/4" OUTER DIAMETER AND 5/8"
INSIDE DIAMETER, TYP
FULL BED OF MULTI-COMPONENT
SEALANT AT PERIMETER OF SPACER, TYP
1" OD NEOPRENE/SS BONDED
WASHER PROVIDED BY WALMART
IN BED OF CONTINUOUS
MULTI-COMPONENT SEALANT BY
SIGN CONTRACTOR
INDIVIDUAL PLASTIC ILLUMINATED
CHANNEL LETTERS BY SIGN SUPPLIER
INSTALL LETTER FACES W/ SET
SCREWS, TYP BY SIGN INSTALLER
1/2" ALL-THREAD CUT TO WITHIN
4" OF NUT AND GRIND END
SMOOTH, TYP

7 SIGNAGE ATTACHMENT
1 1/2" = 1'-0"

EXISTING EXTERIOR PLYWOOD
SHEATHING
EXISTING WATERPROOFING
MEMBRANE
SEALANT AT PERIMETER AND
ANCHORS OF REMOTE POWER
SUPPLY ENCLOSURE BY SIGN
CONTRACTOR
REMOTE POWER SUPPLY
ENCLOSURE PROVIDED AND
INSTALLED BY SIGN CONTRACTOR
5/8" EXTERIOR PLYWOOD
SHEATHING
WATERPROOFING
MEMBRANE
SEALANT AT PERIMETER AND
ANCHORS OF REMOTE POWER
SUPPLY ENCLOSURE BY SIGN
CONTRACTOR
LOW VOLTAGE WIRE INSTALLED
BY SIGN CONTRACTOR
3/4" LIQUID TIGHT FLEXIBLE METAL
CONDUIT BY BUILDING GENERAL
CONTRACTOR, REF 5&6-A2.0 FOR
ROOF PENETRATION DETAIL
SIGNAGE CONDUIT FLASHING AT
LOW VOLTAGE WIRE PENETRATIONS
PROVIDED BY WALMART INSTALLED
BY SIGN CONTRACTOR, REF
INSTALLATION INSTRUCTIONS
SEALANT AT LOW VOLTAGE WIRE
PENETRATIONS BY SIGN
CONTRACTOR

NOTE:
LOCATE ALL-THREADS PER SIGN
ATTACHMENT TEMPLATE, GO TO
COORDINATE WITH SIGN
SHOP/INSTALLER FOR LOCATIONS

EXISTING SIGNAGE SCHEDULE						
MAIN BUILDING SIGNAGE	QTY	LIGHTED	COLOR	SIZE	INDIVIDUAL AREA	TOTAL AREA
FRONT SIGNAGE						
Walmart	1	LED	WHITE	5'-6"		
* (Spark)	1	LED	YELLOW	8'-0"	298.00 SF	298.00
Market & Pharmacy	1	N/A	WHITE	2'-6"	102.74 SF	102.74
TOTAL FRONT SIGNAGE						400.74
SIDE SIGNAGE						
Walmart	1	LED	WHITE	5'-6"		
* (Spark)	1	LED	YELLOW	8'-0"	298.00 SF	298.00
TOTAL SIDE SIGNAGE						298.00
PHARMACY DRIVE-THRU SIGNAGE						
Pharmacy	1	N/A	WHITE	1'-0"	8.15 SF	8.15 SF
Exit	1	N/A	WHITE	1'-0"	2.25 SF	2.25 SF
Pharmacy Drive-Thru	2	N/A	WHITE	1'-6"	39.99 SF	79.98 SF
TOTAL PHARMACY DRIVE-THRU SIGNAGE						90.38 SF
EXISTING TOTAL BUILDING SIGNAGE						789.12 SF

SIGNAGE GENERAL NOTES

- BUILDING SIGNAGE FURNISHED BY WALMART, INSTALLED BY OTHERS. SITE DIRECTIONAL PLACARDS FURNISHED BY WALMART, INSTALLED BY G.C.; POLE FURNISHED AND INSTALLED BY G.C. PAVEMENT PAINT FURNISHED AND INSTALLED BY G.C.
- GENERAL CONTRACTOR RESPONSIBILITIES:
 - REMOVE EXISTING BUILDING SIGNAGE AS INDICATED.
 - BY END OF FIRST WEEK OF CONSTRUCTION, REVIEW EXISTING CONSTRUCTION WHERE SIGN(S) WILL BE INSTALLED. IF EXISTING CONDITIONS DO NOT MATCH SIGN ATTACHMENT DETAILS SHOWN, REQUEST APPROVAL FROM CONSTRUCTION MANAGER TO SUBMIT RFI IN ACCORDANCE WITH SECTION 01255. NOTE DIFFERENCES IN CONSTRUCTION, INCLUDING DIMENSIONS, AND INCLUDE PHOTOGRAPHS FOR CLARIFICATION.
 - PROVIDE JUNCTION BOXES AND CIRCUITRY TO NEW "Pickup" AND "spark" SIGNAGE.
 - VERIFY VOLTAGE AT CIRCUITS FEEDING LIGHTED SIGNAGE. REFER TO ELECTRICAL.
 - MAKE FINAL TERMINATIONS ON LIGHTED SIGNAGE. NOT USED.
 - FOR SPECIAL PROJECTS, WHEN REQUIRED BY AHJ, G.C. IS RESPONSIBLE TO ACQUIRE SEPARATE PERMIT(S) FOR INSTALLATION OF SITE SIGNS. FOR REM PROJECTS, FOLLOW REM SIGN STANDARDS FOR PERMITS AND INSTALLATION.
 - ALL SIGN PLACARDS PROVIDED BY WALMART AND INSTALLED BY GENERAL CONTRACTOR. ALL PAINT FOR PAVEMENT MARKINGS ARE SUPPLIED AND PAINTED BY THE GENERAL CONTRACTOR.
- SIGNAGE CONTRACTOR RESPONSIBILITIES:
 - FURNISH SPECIFIED CONDUIT FOR LIGHTED SIGNAGE.
 - MAKE REQUIRED EXTERIOR WALL PENETRATIONS, INSTALL CONDUIT, AND SEAL PENETRATIONS PER SPECIFICATION SECTION 07900.
 - INSTALL SIGNAGE PER DETAILS ON THIS SHEET.

FINISH LEGEND

P126 KNOCKOUT ORANGE SW66B85
P126U KNOCKOUT ORANGE SW66B85 (URETHANE)
P5 SAFETY YELLOW

8 NOT USED
1/2" = 1'-0"

SIGN MOUNTING LOCATION (TYP) FIELD VERIFY EXACT LOCATIONS
ROOF LINE
JOIST BEARING ELEVATION LINE
6'-1 1/8"
Pickup
ELECTRICAL PENETRATIONS (TYP) FIELD VERIFY EXACT LOCATIONS
REF BLDG ELEVATIONS
CENTER OF SIGN
NOTE TO SIGN INSTALLER:
ALL PRIMARY MOUNTING HOLES MUST BE UTILIZED. IF MOUNTING THROUGH PRIMARY HOLE IS OBSTRUCTED BY REBAR, METAL STUDS, CHANNELS, OR OTHER MISC METAL, SEAL PRIMARY HOLE IN SIGN CAN AND MOUNT THROUGH THE NEAREST ALTERNATE MOUNTING HOLE. PRIMARY HOLES ARE INDICATED WITH PREDRILLED HOLES THROUGH WASHERS. ALTERNATE HOLES ARE INDICATED WITH WASHERS ONLY OR ARE OTHERWISE MARKED.

6 PICKUP SIGN MOUNTING DIAGRAM 1'-6"
1/4" = 1'-0"

1'-6" HIGH ILLUMINATED SIGN, REF 5&6-A2.0
Pharmacy
Pickup
2'-9 1/2"
EQ
EQ
C.O.F. OF SIGNAGE AND LANE

3 CANOPY REAR ELEVATION
1/8" = 1'-0"

6'-1 1/2"
WHITE PLASTIC LETTERS
Pickup
1'-6"
1'-6"
11.62 SF

5 PICKUP SIGNAGE 1'-6"
1/2" = 1'-0"

EQ
EQ
1'-6" HIGH ILLUMINATED SIGN, REF 5 & 6-A2.0
Pickup
4'-7"
EQ

4 ENLARGED FRONT ELEVATION
1/8" = 1'-0"

A B C D E F G H J K L
Walmart

2 RIGHT SIDE ELEVATION
1" = 20'-0" 093011

1 2 3 4 5 6 7 8 9 10
Walmart
Market & Pharmacy
Paint existing frame P126U TO MATCH NEW FINISHED ODP DOOR

1 FRONT ELEVATION
1" = 20'-0" 093011

EXISTING CONDITIONS WERE TAKEN FROM ORIGINAL DRAWINGS AND MAY NOT REFLECT EXACT "AS-BUILT" CONDITIONS. CONTRACTOR SHALL FIELD VERIFY ALL EXISTING CONDITIONS PRIOR TO SUBMITTING FINAL BIDS. CONTRACTOR SHALL CAREFULLY COORDINATE NEW WORK AND DEMOLITION WITH ALL OTHER DISCIPLINES AND EXISTING CONDITIONS.

EACH SUBCONTRACTOR IS RESPONSIBLE FOR HAVING A THOROUGH KNOWLEDGE OF ALL DRAWINGS AND SPECIFICATIONS IN THEIR RELATED FIELD. THE FAILURE TO ACQUAINT THEMSELVES WITH THIS KNOWLEDGE DOES NOT RELIEVE THE RESPONSIBILITY OF PERFORMING THE WORK PROPERLY. NO ADDITIONAL COMPENSATION SHALL BE ALLOWED BECAUSE OF CONDITIONS THAT OCCUR DUE TO FAILURE TO FAMILIARIZE WORKERS WITH THIS KNOWLEDGE.

BUILDING ELEVATIONS AND SECTIONS

SHEET:
A2.0

Walmart
BLOOMINGTON, MN
STORE NO. 2198
JOB NUMBER: WAL090109

ISSUE BLOCK

PR#	DATE
1	12/12/17

CHECKED BY: AP
DRAWN BY: DD/H/C
PROTO: LOW CAP PICKUP
PROTO CYCLE: 101717
DOCUMENT DATE: 10/24/17

NOT FOR REGULATORY APPROVAL, PERMITTING, OR CONSTRUCTION

7907 DISCOVERY BLVD
BLOOMINGTON, MN 55425
612.434.7000 T
WDPARTNERS.COM

STIPULATION FOR REUSE

THIS DRAWING AND THE INFORMATION CONTAINED HEREIN ARE THE PROPERTY OF WALMART STORE DEVELOPMENT, INC. (WSD). IT IS TO BE USED ONLY FOR THE PROJECT AND SITE SPECIFICALLY IDENTIFIED HEREON. IT IS NOT TO BE REPRODUCED, COPIED, OR TRANSMITTED IN ANY FORM OR BY ANY MEANS, ELECTRONIC OR MECHANICAL, INCLUDING PHOTOCOPYING, RECORDING, OR BY ANY INFORMATION STORAGE AND RETRIEVAL SYSTEM, WITHOUT THE WRITTEN PERMISSION OF WSD. ANY UNAUTHORIZED REUSE OR MODIFICATION OF THIS DRAWING SHALL BE AT THE USER'S SOLE RISK AND WITHOUT LIABILITY TO WSD.

CONSULTANTS

PRINTED: 12/12/2017 4:24 PM (replot) LAST SAVED: 12/12/2017 12:43 PM (vba3448) FILE: \\wpartners.com\g\g\g\Production\WAL\G\WALP0109_2188_MN_Bloomington\03-Build\02-Arch-Eng\WD-Conf\Sheets\0050 - SP1 SITE PLAN AND DEMOLITION SITE PLAN - 2188.dwg

EXISTING DIRECTIONAL SIGN SCHEDULE			NEW DIRECTIONAL SIGN SCHEDULE		
DESCRIPTION	NUMBER	MOUNTING TYPE	ARROW	NUMBER	MOUNTING TYPE
Pharmacy Drive Thru	1	Pole	Directional Left	3	Pole
Walgreens Entrance	1	Pole	Directional Right	2	Pole
Village Square Access	1	Pole	Directional Straight	3	Pole
Total Existing	2		Total New	8	

CASE #PL2021-103

APPROVED
Zoning Review Only
05/12/2021 NMJ



CALL BEFORE YOU DIG!
MINNESOTA LAW REQUIRES EXCAVATORS TO NOTIFY THE REGIONAL NOTIFICATION CENTER AT LEAST TWO (2) BUSINESS DAYS BUT NOT MORE THAN FOURTEEN (14) CALENDAR DAYS PRIOR TO EXCAVATION.
GOPESTATE ONE CALL
www.gopestateonecall.org
1-800-252-1166

MAINTAIN EGRESS PATH DURING CONSTRUCTION WHEN WORK IS NOT BEING CONDUCTED AT DOOR. LIMIT DISRUPTION OF EXIT DURING CONSTRUCTION. IF WORK REQUIRES THE BLOCKAGE OF THE DOOR, NOTIFY STORE MANAGEMENT AND COORDINATE WITH FIRE DEPARTMENT.

SIGNAGE GENERAL NOTES	
1. REF A2.0 FOR SIGNAGE GENERAL NOTES	
SIGNAGE LEGEND	
DIRECTIONAL SIGN REF 2 & 3-SP1.1	SIGN ARROW DIRECTION L=LEFT R=RIGHT S=STRAIGHT
SIGNAGE NOTES	
1. REF SP1.1 FOR POLE DETAILS AND SIGNAGE DETAILS	

wd
7907 DISCOVERY BLVD
COLUMBIA, OH 43002
614.634.7000 T
WDPARTNERS.COM

STIPULATION FOR REUSE
THIS DRAWING AND SITE PLAN FOR CONSTRUCTION ONLY. IT IS NOT TO BE REUSED FOR ANY OTHER PROJECT WITHOUT THE WRITTEN PERMISSION OF THE ARCHITECT. ANY REUSE OF THIS DRAWING FOR ANY OTHER PROJECT WITHOUT THE WRITTEN PERMISSION OF THE ARCHITECT IS PROHIBITED. THE ARCHITECT ASSUMES NO LIABILITY FOR ANY DAMAGE OR INJURY TO PERSONS OR PROPERTY ARISING FROM THE USE OF THIS DRAWING OR SITE PLAN.

CONSULTANTS

Walmart
BLOOMINGTON, MN
STORE NO. 2188
JOB NUMBER: WALP0109 0017 ONLINE GROCERY PICKUP

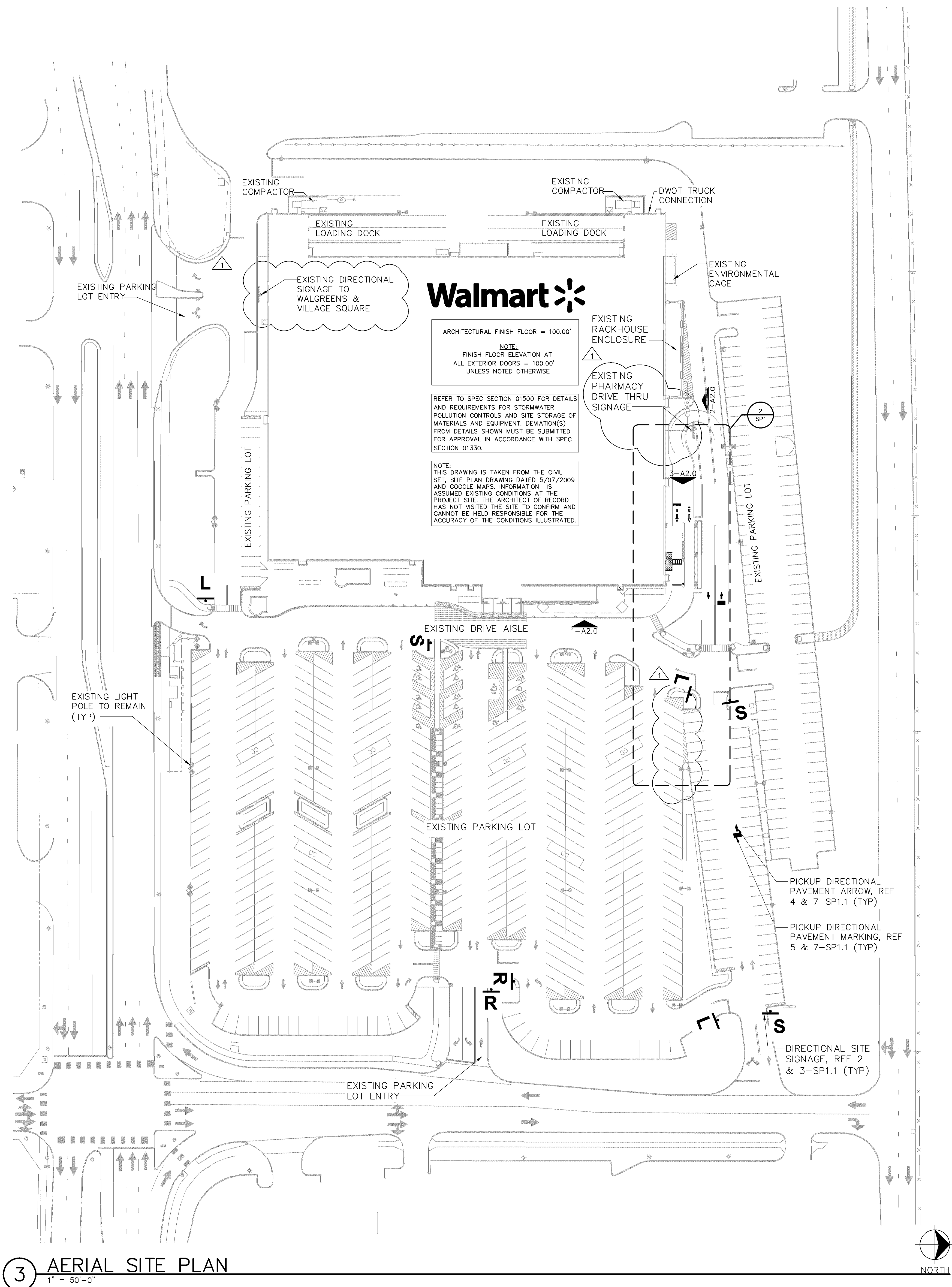
ISSUE BLOCK	
PR#1	12/12/17

CHECKED BY: AP
DRAWN BY: DD/HK
PROT: LOW CAP PICKUP
PROT CYCLE: 101717
DOCUMENT DATE: 10/24/17

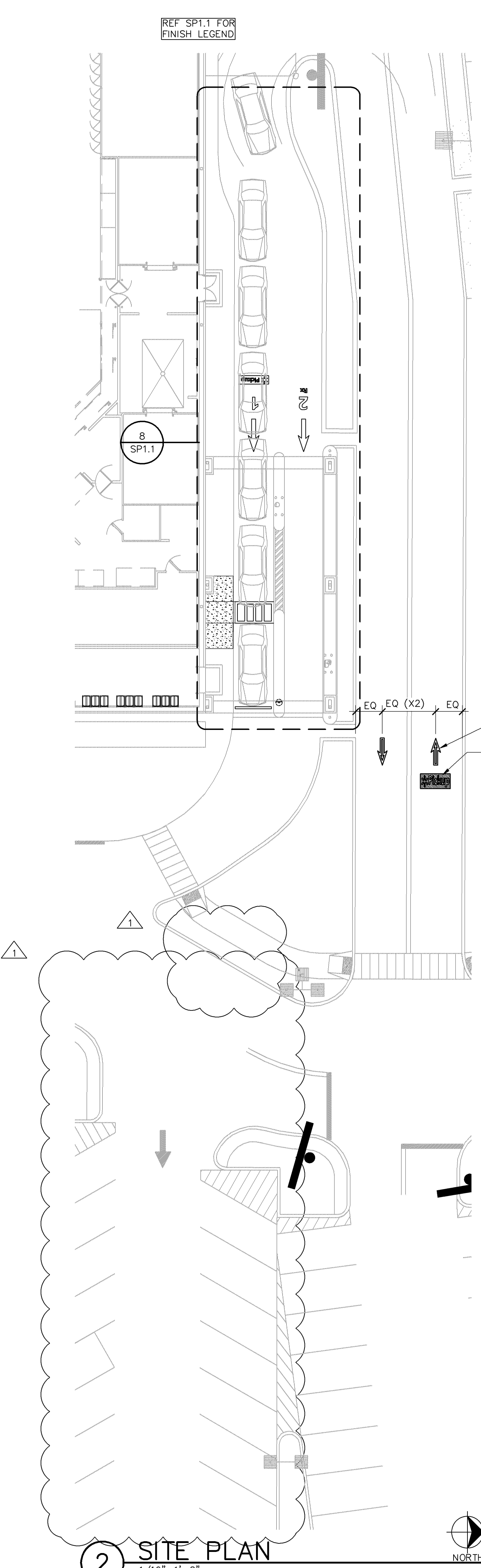
NOT FOR REGULATORY APPROVAL, PERMITTING, OR CONSTRUCTION

SITE PLAN AND DEMOLITION SITE PLAN

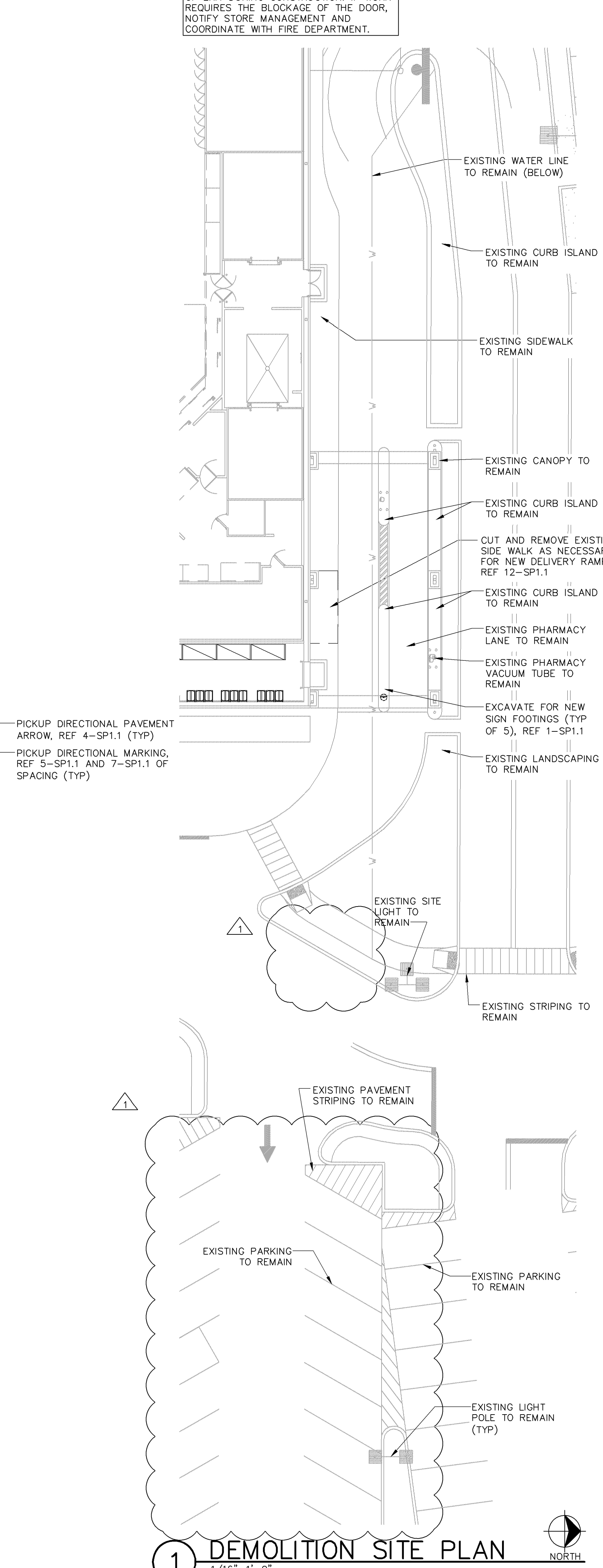
SHEET: SP1



3 AERIAL SITE PLAN
1" = 50'-0"



2 SITE PLAN
1/16" = 1'-0"



1 DEMOLITION SITE PLAN
1/16" = 1'-0"

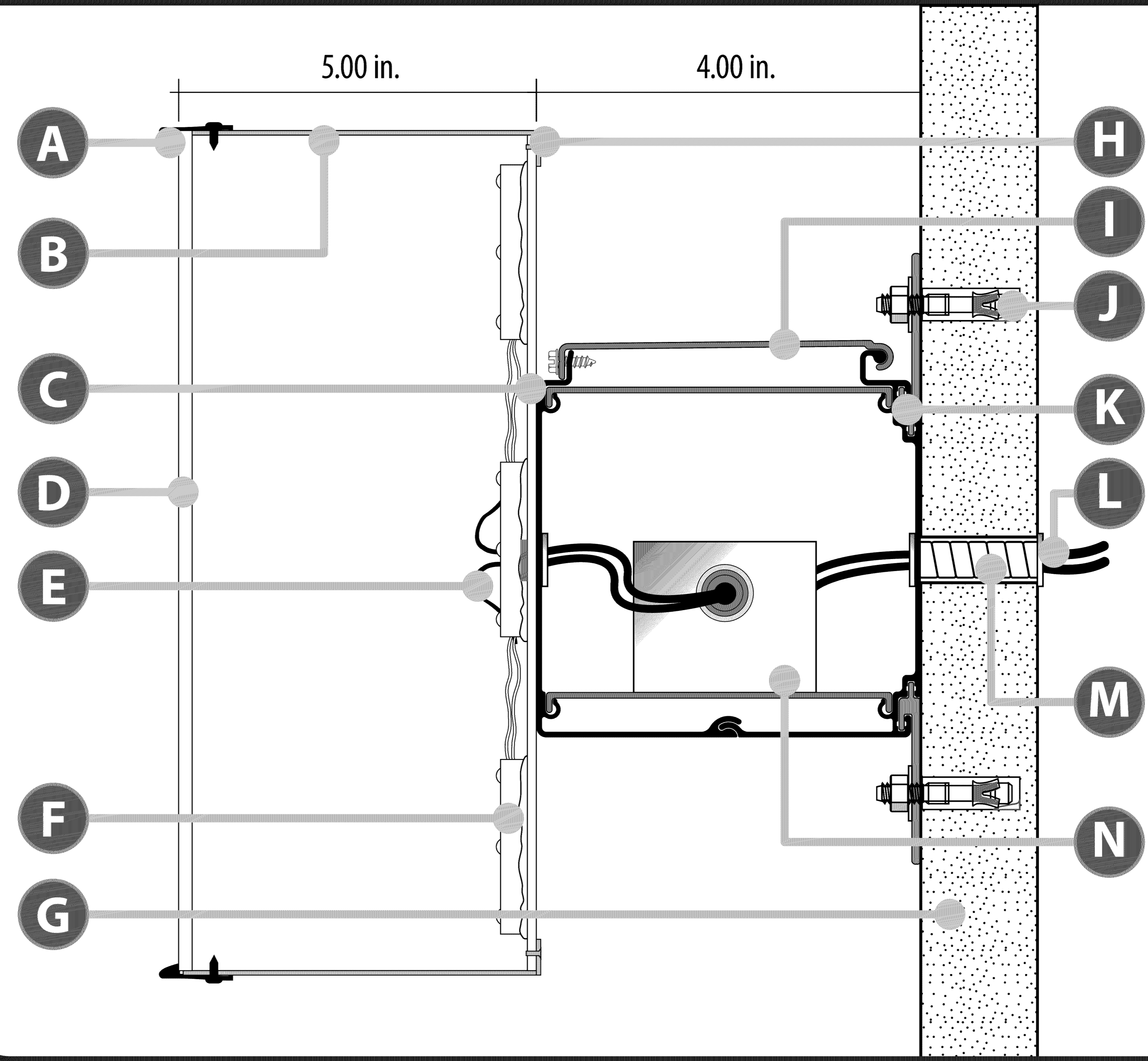
EXISTING CONDITIONS WERE TAKEN FROM ORIGINAL DRAWINGS AND MAY NOT REFLECT EXACT "AS-BUILT" CONDITIONS. CONTRACTOR SHALL FIELD VERIFY ALL EXISTING CONDITIONS PRIOR TO SUBMITTING FINAL BIDS. CONTRACTOR SHALL CAREFULLY COORDINATE NEW WORK AND DEMOLITION WITH ALL OTHER DISCIPLINES AND EXISTING CONDITIONS.

EACH SUBCONTRACTOR IS RESPONSIBLE FOR HAVING A THOROUGH KNOWLEDGE OF ALL DRAWINGS AND SPECIFICATIONS IN THEIR RELATED FIELD. THE FAILURE TO ACQUAINT THEMSELVES WITH THIS KNOWLEDGE DOES NOT RELIEVE THE RESPONSIBILITY OF PERFORMING THE WORK PROPERLY. NO ADDITIONAL COMPENSATION SHALL BE ALLOWED BECAUSE OF CONDITIONS THAT OCCUR DUE TO FAILURE TO FAMILIARIZE WORKERS WITH THIS KNOWLEDGE.

ART SUPERIMPOSED ON PHOTO SHOWN AT APPROXIMATE RELATIVE SCALE



LED ILLUMINATED RACEWAY MOUNTED CHANNEL LETTERS



PARTS LIST

A	Trim Cap
B	Aluminum Return
C	.060 Aluminum Back
D	3/16" Acrylic Face
E	Low Voltage Wire
F	LED Modules
G	Building Fascia
H	Flange Riveted to Letter Back
I	Electrical Access Lid
J	Mechanical Fasteners
K	Alum Raceway w/ Mounting Clips
L	120v Primary Electrical
M	Electrical Conduit
N	LED Power Supply

* Power supplies can also be completely enclosed in a larger power supply box or in a raceway mounted on the back side of the wall.

Materials & Substrates:

● Interior ○ Exterior

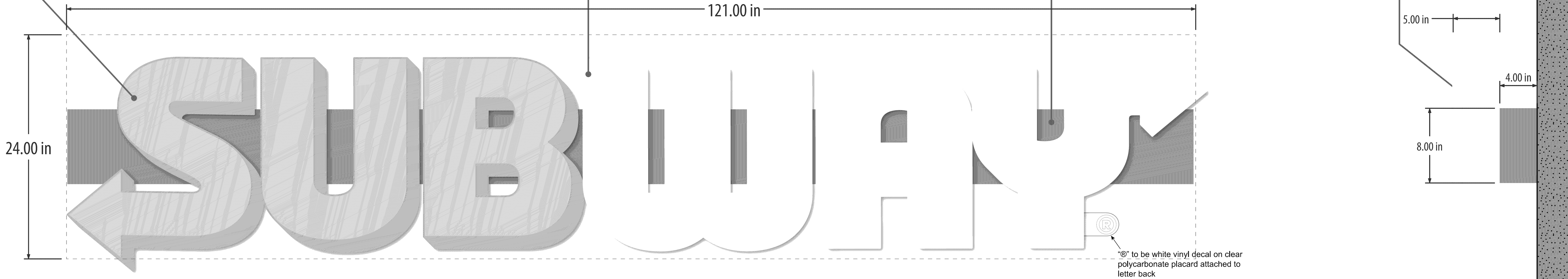
20.1 SQ. Ft. RACEWAY MOUNTED CHANNEL LETTER SET

- 1 Standard 5" Deep RACEWAY Mounted LED Channel Letters
- SUBWAY Logo -
 - 7328 White 3/16" Faces w/ 3630-75 Yellow Translucent Vinyl
 - White LEDs
 - Yellow PMS 7548 Painted Returns
 - Yellow PMS 7548 Painted Trim Cap

- 2 Standard 5" Deep RACEWAY Mounted LED Channel Letters
- SUBWAY Logo -
 - 7328 White 3/16" Faces
 - White LEDs
 - White Painted Returns
 - White Trim Cap

- 2 Standard 8" Raceway Painted to Match Building Color TBD

- 4 Side View of 5" Deep Raceway Mounted Channel Letters



APPROVED
Zoning Review Only
05/12/2021 NMJ

CONCEPTUAL
DRAWING
NOT FOR FABRICATION OR PRODUCTION

UL
LISTED
NOTICE
ALL SIGNS MANUFACTURED
FOR 120v ELECTRICAL SERVICE
UNLESS OTHERWISE NOTED

Location: Shared Design