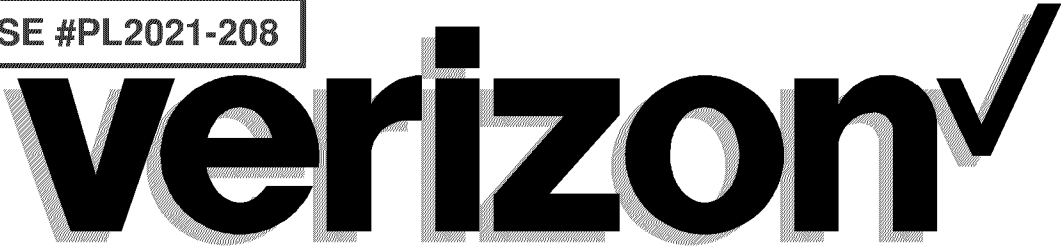


CASE #PL2021-208

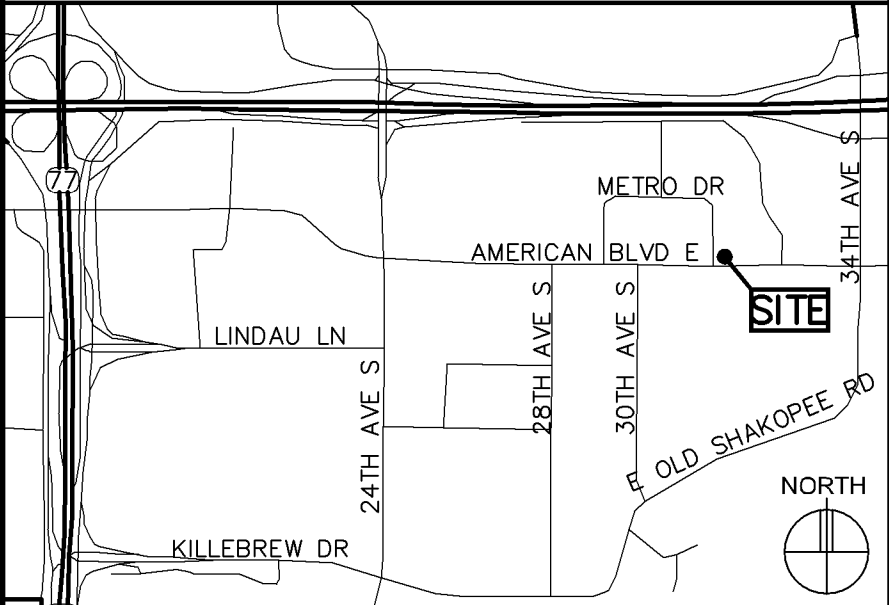


MIN AIRPORT
L-SUB 6

SITE PHOTO



VICINITY MAP



SHEET INDEX

SHEET	SHEET DESCRIPTION
T-1	PROJECT INFORMATION, MAPS, DIRECTIONS, AND SHEET INDEX
A-1	SECTOR ELEVATIONS
A-2	PROPOSED KEYS
A-3	GENERAL NOTES & ONE-LINE DIAGRAM
A-4	PHOTOS

ISSUE SUMMARY

REV	DESCRIPTION	SHEET OR DETAIL
A	ISSUED FOR REVIEW	ALL
B	ISSUED FOR OWNER SIGNOFF	ALL
0	ISSUED FOR BID / CONSTRUCTION	ALL

VZW DEPARTMENTAL APPROVALS

JOB TITLE	NAME	DATE
RF ENGINEER	JOSHUA MARTIN	4/7/2021
CONSTRUCTION ENGINEER	BRENT FORBES	4/8/2021

LESSOR / LICENSOR APPROVAL

SIGNATURE	PRINTED NAME	DATE
	THOMAS BOONE	9/21/2021
LESSOR / LICENSOR: PLEASE CHECK THE APPROPRIATE BOX BELOW		
<input checked="" type="checkbox"/> NO CHANGES.	<input type="checkbox"/> CHANGES NEEDED. SEE COMMENTS ON PLANS.	

SITE LOCATION



CONTACTS

LESSOR:	INTERNATIONAL PLAZA PARTNERS
LESSEE:	VERIZON WIRELESS 10801 BUSH LAKE ROAD BLOOMINGTON, MN 55438 CONSTRUCTION DEPT (952) 946-4700
DESIGNER:	DESIGN 1 OF EDEN PRAIRIE, LLC. 9973 VALLEY VIEW ROAD EDEN PRAIRIE, MN 55344 (952) 903-9299
STRUCTURAL ENGINEER:	HERZOG ENGINEERING 530 NORTH 3RD STREET, SUITE 230 MINNEAPOLIS, MN 55401 (612) 844-1234

PROJECT INFORMATION

SITE NAME:	MIN AIRPORT
PROJECT NUMBER:	20202204430
SITE ADDRESS:	7900 INTERNATIONAL DRIVE BLOOMINGTON, MN 55425
COUNTY:	HENNEPIN
LATITUDE:	N 44° 51' 32.00"
LONGITUDE:	W 93° 13' 35.00"
GROUND ELEVATION:	818.0' AMSL
ANTENNA TIP HEIGHT:	VARIES (SEE KEYS)
ANTENNA CENTERLINE HEIGHT:	VARIES (SEE KEYS)
STRUCTURE HEIGHT:	143.5' AGL
OVERALL STRUCTURE HEIGHT:	143.5' AGL
GENERATOR ON SITE:	NO
BASED ON RFDS DATED:	10-22-20
CABLE ROUTES:	"X" = (2) 1-5/8" COAX CABLES (EXISTING) "Y" = (2) 1-5/8" COAX CABLES (EXISTING) "Z" = (2) 1-5/8" COAX CABLES (EXISTING) (4) HYBRID CABLES (EXISTING)

PROJECT DESCRIPTION:
• ADD (3) ANTENNAS
• ADD POWERSHIFT EQUIPMENT

DESIGN 1

9973 VALLEY VIEW RD.
EDEN PRAIRIE, MN 55344
(952) 903-9299
WWW.DESIGN1EP.COM

verizon

10801 BUSH LAKE ROAD
BLOOMINGTON, MN 55438
(952) 946-4700

PROJECT

20202204430

LOC. CODE # 140128

MIN
AIRPORT
L-SUB 6

7900 INTERNATIONAL DRIVE
BLOOMINGTON, MN 55425

SHEET CONTENTS:

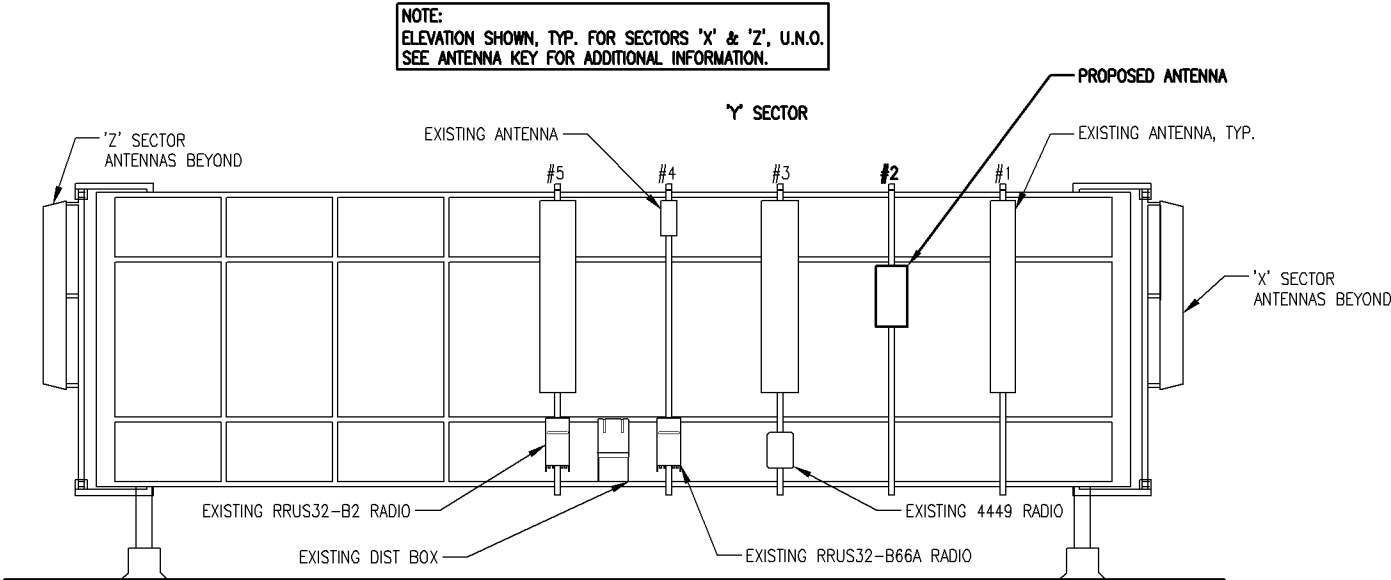
CONTACTS
ISSUE SUMMARY
SHEET INDEX
DEPARTMENTAL APPROVALS
LESSOR APPROVAL
PROJECT INFORMATION
VICINITY MAP
GENERAL NOTES

DRAWN BY:	SJD
DATE:	02-24-21
CHECKED BY:	MJS
REV. A	03-25-21
REV. B	04-12-21
REV. 0	09-23-21

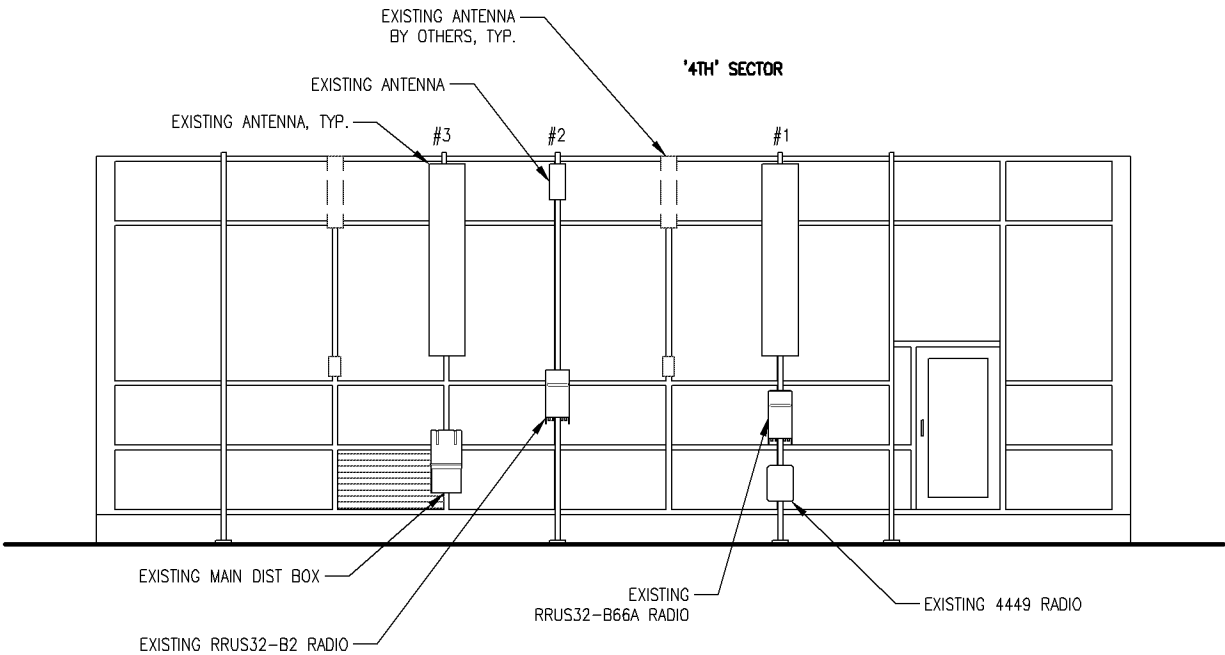
T-1

NOTES:
1. PROPOSED ANTENNAS TO BE INSTALLED IN ACCORDANCE W/ANALYSIS BY HERZOG ENGINEERING, LLC, PROJECT #211095. NOTIFY ENGINEER IMMEDIATELY IF THERE ARE ANY DISCREPANCIES BETWEEN THE ANALYSIS/CONSTRUCTION DRAWINGS AND THE EXISTING CONDITIONS. THE CONTRACTOR SHALL VERIFY THAT THE HEIGHTS OF THE EXISTING EQUIPMENT MATCH THE ANALYSIS.

- SPECIFICATIONS:**
- 1) WRAPPING – SCOPE OF WORK INCLUDES PROVIDING COORDINATION OF THE MATERIALS AND LABOR FOR WRAPPING THE "AIR 6449 B77D" ANTENNAS WITH CONCEALMENT FILM. CONTRACTOR SHALL UTILIZE FINISH COAT COLOR SHERWIN WILLIAMS SW 6228 "REFUGE" OR EQUIVALENT TO MATCH EXISTING PAINTED EQUIPMENT.
- CONTRACTOR TO FURNISH THE "AIR 6449 B77D" ANTENNAS WITH CONCEALMENT FILM. CONCEALMENT FILM TO BE 3M "ENVISION PRINT WRAP FILMS 480MC". CONCEALMENT FILM TO BE PRINTED A SOLID-COLOR AND PRINTING TO BE PERFORMED BY A 3M MCS CERTIFIED GRAPHICS MANUFACTURER. PRINTED CONCEALMENT FILM TO BE COVERED WITH 3M "ANTI-GRAFFITI WRAP MATTE OVERLAMINATE 8590M". CONCEALMENT FILM TO BE INSTALLED ON "AIR 6449 B77D" ANTENNAS AND SHALL EXCLUDE HEAT-SINK FINS, MANUFACTURER'S LABELS, VENTILATION HOLES AND CABLE CONNECTIONS. INSTALLATION OF THE OVERLAMINATED, PRINTED CONCEALMENT FILM ONTO ANTENNAS TO BE BY A TRAINED 3M "PREFERRED", "ENDORSED" OR "CERTIFIED" INSTALLER OR GRAPHIC INSTALLATION COMPANY. FOR PROCURING THE PROPER 3M CONCEALMENT FILM CONTACT:
 - NICHOLAS LOWRY
BRAND INK
99 FIFTH AVE NW, SUITE 300
ST. PAUL, MN 55112
OFFICE: (612) 256-2786
FAX: (612) 234-4287
EMAIL: NICK@BRANDINK.COM
WEBSITE: WWW.BRANDINK.COM



APPROVED
Zoning Review Only
10/15/2021 NMJ



CASE #PL2021-208

208	ANTENNA KEY												CABLE KEY							EQUIPMENT KEY							
	AZIMUTH	POSITION	QTY	MANUFACTURER	MODEL	MOD TYPE	ANTENNA LENGTH	ANTENNA TIP	ANTENNA CENTER	ELEC DOWNTILT	MECH DOWNTILT	STATUS	QTY	COAX TYPE	MANUFACTURER	MODEL	DIELECTRIC	DIAMETER (INCH)	RUN (FEET)	STATUS	QTY	MANUFACTURER	MODEL	FIBER FEED TAIL	RRU PORT	STATUS	
"X" SECTOR	330'	1.1	1	CSS	X7C-CAP-86-865-V	850 CDMA +45	96.0"	143'	139'	7"	0'	EXISTING	1	MAIN	ANDREW	LDF7-50	FOAM	1-5/8"	80'	EXISTING	--	--	--	--	--	--	
	--	1.2	--	--	2ND PORT	850 CDMA -45	--	--	--	--	--	--	1	MAIN	ANDREW	LDF7-50	FOAM	1-5/8"	80'	EXISTING	--	--	--	--	--	--	
	350'	2	1	ERICSSON	AIR 6449 B77D	L-SUB 6	30.6"	140.3'	139'	3"	0'	PROPOSED	--	--	--	--	--	--	--	--	(1) FIBER FEED TAIL, COMMSCOPE #HFT410-3SBJ1-15					--	
	350'	3.1	1	COMMSCOPE	NHH-45C-R2B	700/850 +45	95.9"	143'	139'	10'	0'	EXISTING	--	--	--	--	--	--	--	--	1	ERICSSON	4449	COMMSCOPE FIBER FEED TAIL #HFT410-4SVHY-15	1	EXISTING	
	--	3.2	--	--	2ND PORT	700/850 -45	--	--	--	--	--	--	--	--	--	--	--	--	--	--	--	--	2	--	--		
	--	3.3	--	--	3RD PORT	AWS LTE +45	--	--	--	4'	0'	--	--	--	--	--	--	--	--	--	1	ERICSSON	RRUS32 B66A	COMMSCOPE FIBER FEED TAIL #HFT410-4SVHY-15	1	EXISTING	
	--	3.4	--	--	4TH PORT	AWS LTE -45	--	--	--	--	--	--	--	--	--	--	--	--	--	--	--	--	2	--	--		
	--	3.5	--	--	5TH PORT	AWS LTE +45	--	--	--	--	--	--	--	--	--	--	--	--	--	--	--	--	3	--	--		
	--	3.6	--	--	6TH PORT	AWS LTE -45	--	--	--	--	--	--	--	--	--	--	--	--	--	--	--	--	4	--	--		
	350'	4	1	ERICSSON	KRE 101 2251/2	CBRS	17.7"	143'	142.3'	10'	0'	EXISTING	--	--	--	--	--	--	--	--	(1) HYBRID JUMPER					--	
	350'	5.1	1	COMMSCOPE	NHH-45C-R2B	700/850 +45	95.9"	143'	139'	10'	0'	EXISTING	--	--	--	--	--	--	--	--	--	ERICSSON	4449	COMMSCOPE FIBER FEED TAIL #HFT410-4SVHY-15	3	--	
	--	5.2	--	--	2ND PORT	700/850 -45	--	--	--	--	--	--	--	--	--	--	--	--	--	--	--	1	ERICSSON	RRUS32 B2	COMMSCOPE FIBER FEED TAIL #HFT410-4SVHY-15	4	--
	--	5.3	--	--	3RD PORT	PCS LTE +45	--	--	--	4'	0'	--	--	--	--	--	--	--	--	--	--	--	1	--	EXISTING		
	--	5.4	--	--	4TH PORT	PCS LTE -45	--	--	--	--	--	--	--	--	--	--	--	--	--	--	--	--	2	--	--		
--	5.5	--	--	5TH PORT	PCS LTE +45	--	--	--	--	--	--	--	--	--	--	--	--	--	--	--	--	3	--	--			
--	5.6	--	--	6TH PORT	PCS LTE -45	--	--	--	--	--	--	--	--	--	--	--	--	--	--	--	--	4	--	--			
"Y" SECTOR	90'	1.1	1	CSS	X7C-CAP-86-865-V	850 CDMA +45	96.0"	143'	139'	7"	0'	EXISTING	1	MAIN	ANDREW	LDF7-50	FOAM	1-5/8"	80'	EXISTING	--	--	--	--	--	--	
	--	1.2	--	--	2ND PORT	850 CDMA -45	--	--	--	--	--	--	1	MAIN	ANDREW	LDF7-50	FOAM	1-5/8"	80'	EXISTING	--	--	--	--	--	--	
	90'	2	1	ERICSSON	AIR 6449 B77D	L-SUB 6	30.6"	140.3'	139'	3"	0'	PROPOSED	--	--	--	--	--	--	--	--	(1) FIBER FEED TAIL, COMMSCOPE #HFT410-3SBJ1-15					--	
	90'	3.1	1	COMMSCOPE	NHH-45C-R2B	700/850 +45	95.9"	143'	139'	6'	0'	EXISTING	--	--	--	--	--	--	--	--	1	ERICSSON	4449	COMMSCOPE FIBER FEED TAIL #HFT410-4SVHY-15	1	EXISTING	
	--	3.2	--	--	2ND PORT	700/850 -45	--	--	--	--	--	--	--	--	--	--	--	--	--	--	--	--	2	--	--		
	--	3.3	--	--	3RD PORT	AWS LTE +45	--	--	--	4'	0'	--	--	--	--	--	--	--	--	--	1	ERICSSON	RRUS32 B66A	COMMSCOPE FIBER FEED TAIL #HFT410-4SVHY-15	1	EXISTING	
	--	3.4	--	--	4TH PORT	AWS LTE -45	--	--	--	--	--	--	--	--	--	--	--	--	--	--	--	--	2	--	--		
	--	3.5	--	--	5TH PORT	AWS LTE +45	--	--	--	--	--	--	--	--	--	--	--	--	--	--	--	--	3	--	--		
	--	3.6	--	--	6TH PORT	AWS LTE -45	--	--	--	--	--	--	--	--	--	--	--	--	--	--	--	--	4	--	--		
	90'	4	1	ERICSSON	KRE 101 2251/2	CBRS	17.7"	143'	142.3'	10'	0'	EXISTING	--	--	--	--	--	--	--	--	(1) HYBRID JUMPER					--	
	90'	5.1	1	COMMSCOPE	NHH-45C-R2B	700/850 +45	95.9"	143'	139'	6'	0'	EXISTING	--	--	--	--	--	--	--	--	--	ERICSSON	4449	COMMSCOPE FIBER FEED TAIL #HFT410-4SVHY-15	3	--	
	--	5.2	--	--	2ND PORT	700/850 -45	--	--	--	--	--	--	--	--	--	--	--	--	--	--	--	1	ERICSSON	RRUS32 B2	COMMSCOPE FIBER FEED TAIL #HFT410-4SVHY-15	4	--
	--	5.3	--	--	3RD PORT	PCS LTE +45	--	--	--	4'	0'	--	--	--	--	--	--	--	--	--	--	--	1	--	EXISTING		
	--	5.4	--	--	4TH PORT	PCS LTE -45	--	--	--	--	--	--	--	--	--	--	--	--	--	--	--	--	2	--	--		
--	5.5	--	--	5TH PORT	PCS LTE +45	--	--	--	--	--	--	--	--	--	--	--	--	--	--	--	--	3	--	--			
--	5.6	--	--	6TH PORT	PCS LTE -45	--	--	--	--	--	--	--	--	--	--	--	--	--	--	--	--	4	--	--			
"Z" SECTOR	210'	1.1	1	CSS	X7C-CAP-86-865-V	850 CDMA +45	96.0"	143'	139'	7"	0'	EXISTING	1	MAIN	ANDREW	LDF7-50	FOAM	1-5/8"	80'	EXISTING	--	--	--	--	--	--	
	--	1.2	--	--	2ND PORT	850 CDMA -45	--	--	--	--	--	--	1	MAIN	ANDREW	LDF7-50	FOAM	1-5/8"	80'	EXISTING	--	--	--	--	--	--	
	210'	2	1	ERICSSON	AIR 6449 B77D	L-SUB 6	30.6"	140.3'	139'	3"	0'	PROPOSED	--	--	--	--	--	--	--	--	(1) FIBER FEED TAIL, COMMSCOPE #HFT410-3SBJ1-15					--	
	210'	3.1	1	COMMSCOPE	NHH-45C-R2B	700/850 +45	95.9"	143'	139'	8"	0'	EXISTING	--	--	--	--	--	--	--	--	1	ERICSSON	4449	COMMSCOPE FIBER FEED TAIL #HFT410-4SVHY-15	1	EXISTING	
	--	3.2	--	--	2ND PORT	700/850 -45	--	--	--	--	--	--	--	--	--	--	--	--	--	--	--	--	2	--	--		
	--	3.3	--	--	3RD PORT	AWS LTE +45	--	--	--	4'	0'	--	--	--	--	--	--	--	--	--	1	ERICSSON	RRUS32 B66A	COMMSCOPE FIBER FEED TAIL #HFT410-4SVHY-15	1	EXISTING	
	--	3.4	--	--	4TH PORT	AWS LTE -45	--	--	--	--	--	--	--	--	--	--	--	--	--	--	--	--	2	--	--		
	--	3.5	--	--	5TH PORT	AWS LTE +45	--	--	--	--	--	--	--	--	--	--	--	--	--	--	--	--	3	--	--		
	--	3.6	--	--	6TH PORT	AWS LTE -45	--	--	--	--	--	--	--	--	--	--	--	--	--	--	--	--	4	--	--		
	210'	4	1	ERICSSON	KRE 101 2251/2	CBRS	17.7"	143'	142.3'	10'	0'	EXISTING	--	--	--	--	--	--	--	--	(1) HYBRID JUMPER					--	
	210'	5.1	1	COMMSCOPE	NHH-45C-R2B	700/850 +45	95.9"	143'	139'	8"	0'	EXISTING	--	--	--	--	--	--	--	--	--	ERICSSON	4449	COMMSCOPE FIBER FEED TAIL #HFT410-4SVHY-15	3	--	
	--	5.2	--	--	2ND PORT	700/850 -45	--	--	--	--	--	--	--	--	--	--	--	--	--	--	--	1	ERICSSON	RRUS32 B2	COMMSCOPE FIBER FEED TAIL #HFT410-4SVHY-15	4	--
	--	5.3	--	--	3RD PORT	PCS LTE +45	--	--	--	4'	0'	--	--	--	--	--	--	--	--	--	--	--	1	--	EXISTING		
	--	5.4	--	--	4TH PORT	PCS LTE -45	--	--	--	--	--	--	--	--	--	--	--	--	--	--	--	--	2	--	--		
--	5.5	--	--	5TH PORT	PCS LTE +45	--	--	--	--	--	--	--	--	--	--	--	--	--	--	--	--	3	--	--			
--	5.6	--	--	6TH PORT	PCS LTE -45	--	--	--	--	--	--	--	--	--	--	--	--	--	--	--	--	4	--	--			
"4TH" SECTOR	280'	1.1	1	COMMSCOPE	NHH-45C-R2B	700/850 +45	95.9"	143'	139'	8"	0'	EXISTING	--	--	--	--	--	--	--	--	1	ERICSSON	4449	COMMSCOPE FIBER FEED TAIL #HFT410-4SVHY-15	1	EXISTING	
	--	1.2	--	--	2ND PORT	700/850 -45	--	--	--	--	--	--	--	--	--	--	--	--	--	--	--	--	2	--	--		
	--	1.3	--	--	3RD PORT	AWS LTE +45	--	--	--	4'	0'	--	--	--	--	--	--	--	--	--	1	ERICSSON	RRUS32 B66A	COMMSCOPE FIBER FEED TAIL #HFT410-4SVHY-15	1	EXISTING	
	--	1.4	--	--	4TH PORT	AWS LTE -45	--	--	--	--	--	--	--	--	--	--	--	--	--	--	--	--	2	--	--		
	--	1.5	--	--	5TH PORT	AWS LTE +45	--	--	--	--	--	--	--	--	--	--	--	--	--	--	--	--	3	--	--		
	--	1.6	--	--	6TH PORT	AWS LTE -45	--	--	--	--	--	--	--	--	--	--	--	--	--	--	--	--	4	--	--		
	280'	2	1	ERICSSON	KRE 101 2251/2	CBRS	17.7"	143'	142.3'	10'	0'	EXISTING	--	--	--	--	--	--	--	--	(1) HYBRID JUMPER					--	
	280'	3.1	1	COMMSCOPE	NHH-45C-R2B	700/850 +45	95.9"	143'	139'	8"	0'	EXISTING	--	--	--	--	--	--	--	--	--	ERICSSON	4449	COMMSCOPE FIBER FEED TAIL #HFT410-4SVHY-15	3	--	
	--	3.2	--	--	2ND PORT	700/850 -45	--	--	--	--	--	--	--	--	--	--	--	--	--	--	--	1	ERICSSON	RRUS32 B2	COMMSCOPE FIBER FEED TAIL #HFT410-4SVHY-15	4	--
	--	3.3	--	--	3RD PORT	PCS LTE +45	--	--	--	4'	0'	--	--	--	--	--	--	--	--	--	--	--	1	--	EXISTING		
	--	3.4	--	--	4TH PORT	PCS LTE -45	--	--	--	--	--	--	--	--	--	--	--	--	--	--	--	--	2	--	--		
	--	3.5	--	--	5TH PORT	PCS LTE +45	--	--	--	--	--	--	--	--	--	--	--	--	--	--	--	--	3	--	--		
	--	3.6	--	--	6TH PORT	PCS LTE -45	--	--	--	--	--	--	--	--	--	--	--	--	--	--	--	--	4	--	--		

EXISTING ADDITIONAL:

- (4) RAYCAP DISTRIBUTION BOX MODEL# RVZDC-6627-PF-48 (ON ROOF)
(4) RAYCAP DISTRIBUTION BOX MODEL# RVZDC-4520-RM-48 (IN EQUIPMENT ROOM)
(1) COMMSCOPE HFT1206-24SV2-140 (X SECTOR)
(1) COMMSCOPE HFT1206-24SV2-170 (Y SECTOR)
(1) COMMSCOPE HFT1206-24SV2-200 (Z SECTOR)
(1) COMMSCOPE HFT1206-24SV2-170 (4TH SECTOR)
(1) POWERSHIFT EQUIPMENT, DC UP-CONVERTER UNIT (IN EQUIPMENT ROOM)
(2) POWERSHIFT EQUIPMENT, DC UP-CONVERTER MODULES (IN EQUIPMENT ROOM)

PROPOSED ADDITIONAL:

- (2) POWERSHIFT EQUIPMENT, DC UP-CONVERTER MODULES (IN EQUIPMENT ROOM)

NOTES:

1. CONTRACTOR TO ACQUIRE THE MOST RECENT RFDS FROM VZW RF ENGINEER FOR VERIFICATION OF ANTENNA DOWNTILT SETTINGS.
2. SCOPE OF WORK INCLUDES FURNISHING & INSTALLING ALL ATTACHMENT HARDWARE TO ADEQUATELY SUPPORT THROUGHOUT THE CABLE ROUTE INCLUDING, BUT NOT LIMITED TO, ALL NECESSARY BRACKETS, SNAP-INS, CUSHIONS, SLEEPERS, HOIST GRIPS & MISCELLANEOUS HARDWARE, FIELD VERIFY.

1 PROPOSED KEYS

APPROVED
Zoning Review Only
10/15/2021 NMJ

DESIGN1

9973 VALLEY VIEW RD.
EDEN PRAIRIE, MN 55344
(952) 903-9299
WWW.DESIGN1EP.COM

verizon

10801 BUSH LAKE ROAD
BLOOMINGTON, MN 55438
(952) 946-4700

PROJECT
20202204430
LOC. CODE # 140128

MIN
AIRPORT
L-SUB 6

7900 INTERNATIONAL DRIVE
BLOOMINGTON, MN 55425

SHEET CONTENTS:
PROPOSED KEYS

DRAWN BY: SJD
DATE: 02-24-21
CHECKED BY: MJS
REV. A 03-25-21
REV. B 04-12-21
REV. D 09-23-21

A-2

General Notes:

1. In the event that Special Inspections are not performed in compliance with the contract terms, bid specifications and/or specified form, the General Contractor will be liable for all damages, construction performance, failures, and corrective actions related to the same.
2. The following general notes shall apply to drawings and govern unless otherwise noted or specified.
3. The work delineated in these drawings and described in the specifications shall conform to codes, standards and regulations that have jurisdiction in the state of MN, and the city of BLOOMINGTON.
4. Requirements and regulations pertaining to R.F. safety codes and practices must be incorporated in the work even though they may not be listed individually and separately in either the drawings or the specifications.
5. Compare field conditions with drawings. Any discrepancies shall be directed to the Designer/Engineer for clarification prior to fabrication and/or construction. Submit necessary shop drawings prior to fabrication for approval by the Designer/Engineer. No information or details on these sheets may be used without the permission of the owner, or the Designer/Engineer.
6. Do not scale drawings
7. Unless otherwise shown or noted, typical details shall be used where applicable.
8. Details shall be considered typical at similar conditions.
9. Safety measures: The contractor shall be solely and completely responsible for the conditions of the job site, including safety of the persons and property and for independent engineering reviews of these conditions. The job site review is not intended to include review of the adequacy of the contractor's safety measures.
10. Within these plans and specifications, "Owner" implies VERIZON WIRELESS.
11. The work is the responsibility of the general contractor unless noted otherwise.
12. The terms "contractor" and "g.c." refer to the owner's general contractor and the general contractor's sub-contractors. It is the general contractor's responsibility to determine the division of work among sub-contractors.
13. The general contractor is responsible in obtaining necessary public and private underground utility locate services prior to start of excavating / construction.

CASE #PL2021-208

DESIGN1

9973 VALLEY VIEW RD.
EDEN PRAIRIE, MN 55344
(952) 903-9299
WWW.DESIGN1EP.COM

verizon

10801 BUSH LAKE ROAD
BLOOMINGTON, MN 55438
(952) 946-4700

PROJECT

20202204430

LOC. CODE # 140128

MIN
AIRPORT
L-SUB 6

7900 INTERNATIONAL DRIVE
BLOOMINGTON, MN 55425

SHEET CONTENTS:
GENERAL NOTES
ONE-LINE DIAGRAM

DRAWN BY: SJD

DATE: 02-24-21

CHECKED BY: MJS

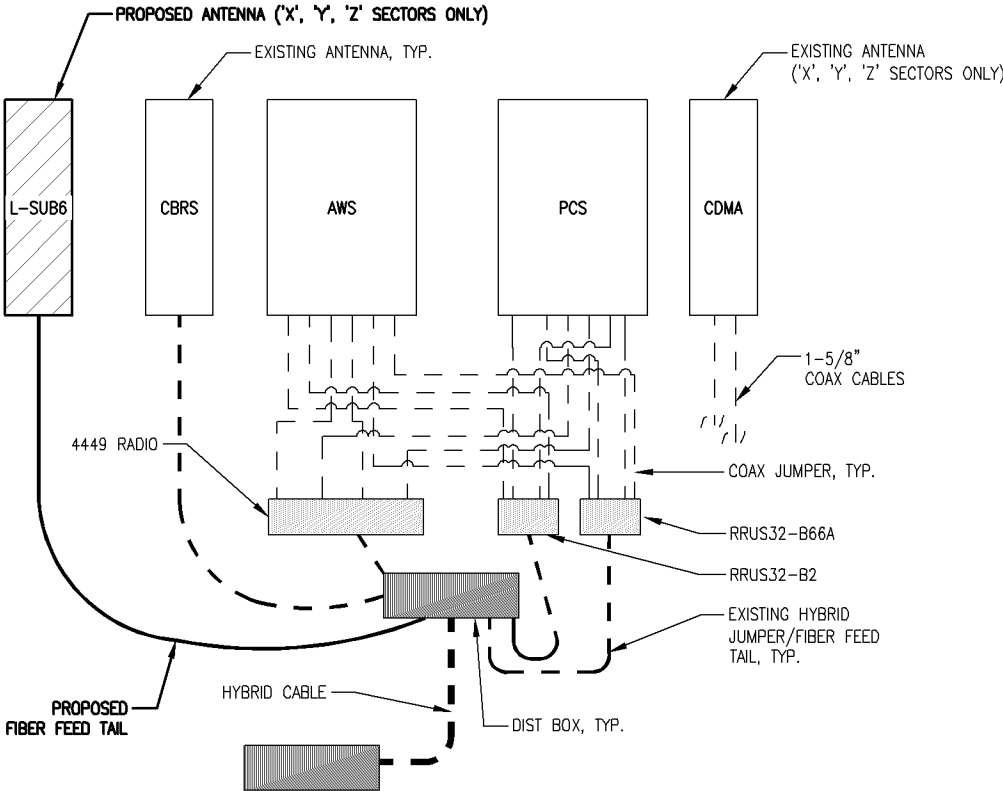
REV. A 03-25-21

REV. B 04-12-21

REV. 0 09-23-21

A-3

NOTE:
ONE-LINE DIAGRAM
ANTENNAS & RADIOS
TYPICAL PER SECTOR,
U.N.O.



1 ONE-LINE DIAGRAM
SCALE: NTS