


**PROPOSED PH1 INDUSTRIAL/OFFICE BUILDING**

**1 SITE PLAN - PHOTOMETRICS INITIAL**  
SCALE: 1" = 30'

**GENERAL NOTES:**  
A. PROVIDE TIME CLOCK FOR DUSK TO DAWN CONTROL.

Statistics						
Description	Symbol	Avg	Max	Min	Max/Min	Avg/Min
Calc. Zone #1	±	0.8 fc	14.6 fc	0.0 fc	N/A	N/A
North Truck Entrance & Loading Dock	✕	3.2 fc	5.8 fc	0.5 fc	11.6:1	6.4:1
Northeast Building Sidewalk	✕	1.1 fc	5.8 fc	0.0 fc	N/A	N/A
South Building Sidewalk	✕	1.8 fc	14.6 fc	0.8 fc	18.3:1	2.3:1
West Building Sidewalk	✕	2.6 fc	3.3 fc	1.8 fc	1.8:1	1.4:1
West Parking Lot	✕	3.2 fc	5.5 fc	1.3 fc	4.2:1	2.5:1

Symbol	Label	QTY	Manufacturer	Catalog Number	Description	Lamp	Number Lamps	Filename	Lumens per Lamp	Lumen Multiplier	LLF	Wattage
□	L1-3	1	COOPER LIGHTING	GLEON-S4AC-740-U-13	GALEON AREA AND ROADWAY LUMINAIRE (4) TO CR. 4000K, 10500mA LIGHTSQUARES WITH 16 LEDS EACH AND TYPE III OPTICS		64	GLEON-S4AC-740-U-13.ies	446	1	1	225
□	L1-4	4	COOPER LIGHTING	GLEON-S4AC-740-U-TFT	GALEON AREA AND ROADWAY LUMINAIRE (4) TO CR. 4000K, 10500mA LIGHTSQUARES WITH 16 LEDS EACH AND TYPE IV FORWARD THROW OPTICS		64	GLEON-S4AC-740-U-TFT.ies	449	1	1	225
□	L2-5	4	COOPER LIGHTING	GLEON-S4SC-740-U-390	GALEON AREA AND ROADWAY LUMINAIRE (4) TO CR. 4000K, 10500mA LIGHTSQUARES WITH 16 LEDS EACH AND TYPE IV WIDE OPTICS		80	GLEON-S4SC-740-U-390.ies	466	1	1	558
□	L1-4-WP	2	COOPER LIGHTING	GLEON-S4AC-740-U-TFT	GALEON AREA AND ROADWAY LUMINAIRE (4) TO CR. 4000K, 10500mA LIGHTSQUARES WITH 16 LEDS EACH AND TYPE IV FORWARD THROW OPTICS		64	GLEON-S4AC-740-U-TFT.ies	449	1	1	225
○	R10	5	COOPER LIGHTING HALO	H0610010-HM612840-61WDC	HALO COMMERCIAL 6" ROUND, NEW CONSTRUCTION FRAME, WITH 6" WIDE DISTRIBUTION, SPECULAR TRIM	(1) HIGH LUMEN LED 80CR / 4000K CCT	1	H0610010-HM612840-61WDC.ies	1118	1	1	10
□	S1-4	1	COOPER LIGHTING	GPC-S4IC-740-U-TFT	GALEON AREA AND ROADWAY LUMINAIRE (1) TO CR. 4000K, 10500mA LIGHTSQUARES WITH 16 LEDS EACH AND TYPE IV FORWARD THROW OPTICS		16	GPC-S4IC-740-U-TFT.ies	475	1	1	59
□	WP	3	COOPER LIGHTING	GWC-S410-740-U-TFT	GALEON WALL LUMINAIRE (1) TO CR. 4000K, 12000mA LIGHTSQUARES WITH 16 LEDS AND TYPE IV FORWARD THROW OPTICS		16	GWC-S410-740-U-TFT.ies	521	1	1	67
□	WP1	2	COOPER LIGHTING	GWC-S418-740-U-T2	GALEON WALL LUMINAIRE (1) TO CR. 4000K, 12000mA LIGHTSQUARES WITH 16 LEDS AND TYPE II OPTICS		16	GWC-S418-740-U-T2.ies	374	1	1	44
○	U1	6	COOPER LIGHTING	TT-C4-LED-E1-RW-7050	TOPPER LED AREA/SITE LUMINAIRE RECTANGULAR DISTRIBUTION	(180) 5000K CCT, 70 CR LEDS	180	TT-C4-LED-E1-RW-7050.ies	37	1	1	58

ESTD. 1977  
**Gephart**  
ELECTRIC  
  
3550 LoBare Road, St. Paul, MN 55110  
Phone [651] 484-4900  
Fax [651] 484-2248  
www.gephartelectric.com

I HEREBY CERTIFY THAT THIS PLAN, SPECIFICATION, OR REPORT WAS PREPARED BY ME OR UNDER MY DIRECT SUPERVISION AND THAT I AM A DULY LICENSED PROFESSIONAL ENGINEER UNDER THE LAWS OF THE STATE OF MINNESOTA

PRINT NAME: BRIAN SCOTT BINKLEY

SIGNATURE: *Brian Scott Binkley*  
DATE: 3/3/2021 LIC. NO. 45881

**SICK - CAMPUS USA**  
**PHASE 1**  
BLOOMINGTON, MINNESOTA

ISSUED FOR:  
DRC SUBMITTAL 03/03/2021

DRAWN BY: SAS  
CHECKED BY: BS/JE  
PROJECT NO: 7122002  
SHEET TITLE:  
SITE PLAN - PHOTOMETRICS INITIAL

SHEET NUMBER:

**E051**



3550 LoBare Road, St. Paul, MN 55110  
Phone (651) 484-4900  
Fax (651) 484-2248  
www.gephartelectric.com

I HEREBY CERTIFY THAT THIS PLAN, SPECIFICATION, OR REPORT WAS PREPARED BY ME OR UNDER MY DIRECT SUPERVISION AND THAT I AM A DULY LICENSED PROFESSIONAL ENGINEER UNDER THE LAWS OF THE STATE OF MINNESOTA

PRINT NAME: BRIAN SCOTT BINKLEY

SIGNATURE: *Brian Scott Binkley*  
DATE 3/3/2021 LIC. NO. 45881

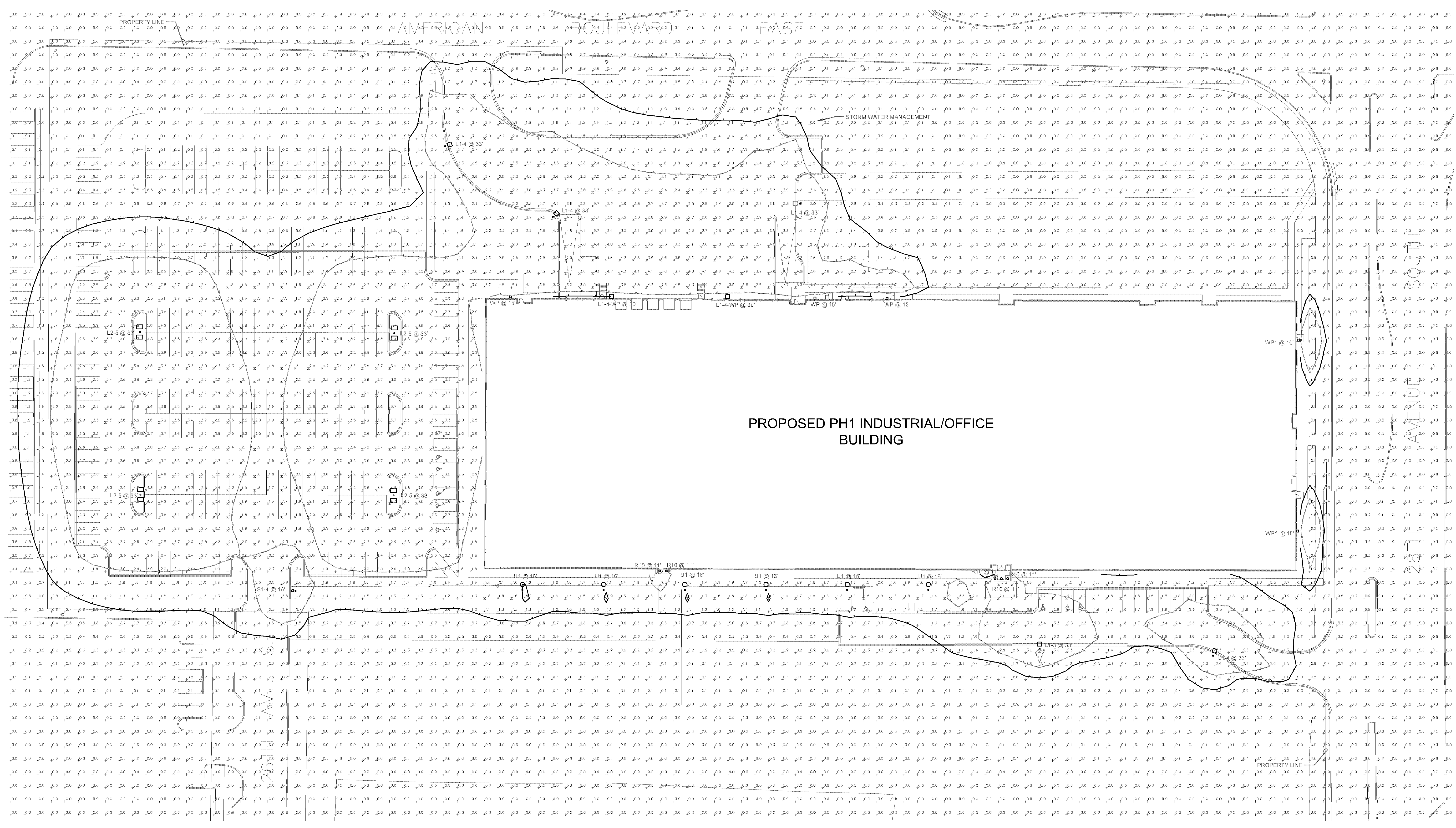
**SICK - CAMPUS USA**  
**PHASE 1**  
BLOOMINGTON, MINNESOTA

ISSUED FOR: DRC SUBMITTAL 03/03/2021

DRAWN BY: SAS  
CHECKED BY: BB/JE  
PROJECT NO: 7122002  
SHEET TITLE: SITE PLAN - PHOTOMETRICS MAINTAINED

SHEET NUMBER:

**E052**



**1 SITE PLAN - PHOTOMETRICS MAINTAINED**  
SCALE: 1" = 30'

**GENERAL NOTES:**  
A. PROVIDE TIME CLOCK FOR DUSK TO DAWN CONTROL.

Statistics						
Description	Symbol	Avg	Max	Min	Max/Min	Avg/Min
Calc. Zone #1	±	0.7 fc	13.3 fc	0.0 fc	N/A	N/A
North Truck Entrance & Loading Deck	X	2.9 fc	5.3 fc	0.5 fc	10.6:1	5.8:1
Northeast Building Sidewalk	X	1.0 fc	5.3 fc	0.0 fc	N/A	N/A
South Building Sidewalk	X	1.7 fc	13.3 fc	0.7 fc	19.0:1	2.4:1
West Building Sidewalk	X	2.4 fc	3.0 fc	1.6 fc	1.9:1	1.5:1
West Parking Lot	X	2.9 fc	5.0 fc	1.1 fc	4.5:1	2.6:1

Symbol	Label	QTY	Manufacturer	Catalog Number	Description	Lamp	Number Lenses	Filename	Lumens per Lamp	Lumen Multiplier	LLF	Wattage
□	L1-3	1	COOPER LIGHTING	GLEON-SAC-740-U-T3	GALEON AREA AND ROADWAY LUMINAIRE (4) 70 CR, 4000K, 1200MA LIGHTSQUARES WITH 18 LEDS EACH AND TYPE III OPTICS		64	GLEON-SAC-740-U-T3.es	448	1	0.91	225
□	L1-4	4	COOPER LIGHTING	GLEON-SAC-740-U-T4T	GALEON AREA AND ROADWAY LUMINAIRE (4) 70 CR, 4000K, 1200MA LIGHTSQUARES WITH 18 LEDS EACH AND TYPE IV FORWARD THROW OPTICS		64	GLEON-SAC-740-U-T4T.es	449	1	0.91	225
□	L2-5	4	COOPER LIGHTING	GLEON-SASC-740-U-SW2	GALEON AREA AND ROADWAY LUMINAIRE (5) 70 CR, 4000K, 1200MA LIGHTSQUARES WITH 18 LEDS EACH AND TYPE V WIDE OPTICS		80	GLEON-SASC-740-U-SW2.es	466	1	0.91	508
□	L1-4-WP	2	COOPER LIGHTING	GLEON-SAC-740-U-T4T	GALEON AREA AND ROADWAY LUMINAIRE (4) 70 CR, 4000K, 1200MA LIGHTSQUARES WITH 18 LEDS EACH AND TYPE IV FORWARD THROW OPTICS		64	GLEON-SAC-740-U-T4T.es	449	1	0.91	225
○	R10	5	COOPER LIGHTING	HCB10010-HM612840-61WOC.es	HALO COMMERCIAL, 6" ROUND, NEW CONSTRUCTION FRAME, WITH 6" WIDE DISTRIBUTION, SPECULAR TRIM	(1) HIGH LUMEN LED 8000 / 4000K CCT	1	HCB10010-HM612840-61WOC.es	1118	1	0.91	10
□	S1-4	1	COOPER LIGHTING	GPC-SAIC-740-U-T4T	GALEON PEDESTRIAN LUMINAIRE (1) 70 CR, 4000K, 1200MA LIGHTSQUARES WITH 18 LEDS AND TYPE IV FORWARD THROW OPTICS		16	GPC-SAIC-740-U-T4T.es	475	1	0.91	59
□	WP	3	COOPER LIGHTING	QWC-SA10-740-U-T4T	GALEON WALL LUMINAIRE (1) 70 CR, 4000K, 1200MA LIGHTSQUARES WITH 18 LEDS AND TYPE IV FORWARD THROW OPTICS		16	QWC-SA10-740-U-T4T.es	521	1	0.91	67
□	WP1	2	COOPER LIGHTING	QWC-SA18-740-U-T2	GALEON WALL LUMINAIRE (1) 70 CR, 4000K, 800MA LIGHTSQUARES WITH 18 LEDS AND TYPE II OPTICS		16	QWC-SA18-740-U-T2.es	374	1	0.91	44
○	U1	6	COOPER LIGHTING	TT-C4-LED-E1-RW-PN-7052	TOPPER LED AREA/PIE LUMINAIRE RECTANGULAR DISTRIBUTION	(160) 8000K CCT, 70 CR LEDS	160	TT-C4-LED-E1-RW-PN-7052.es	37	1	0.91	58