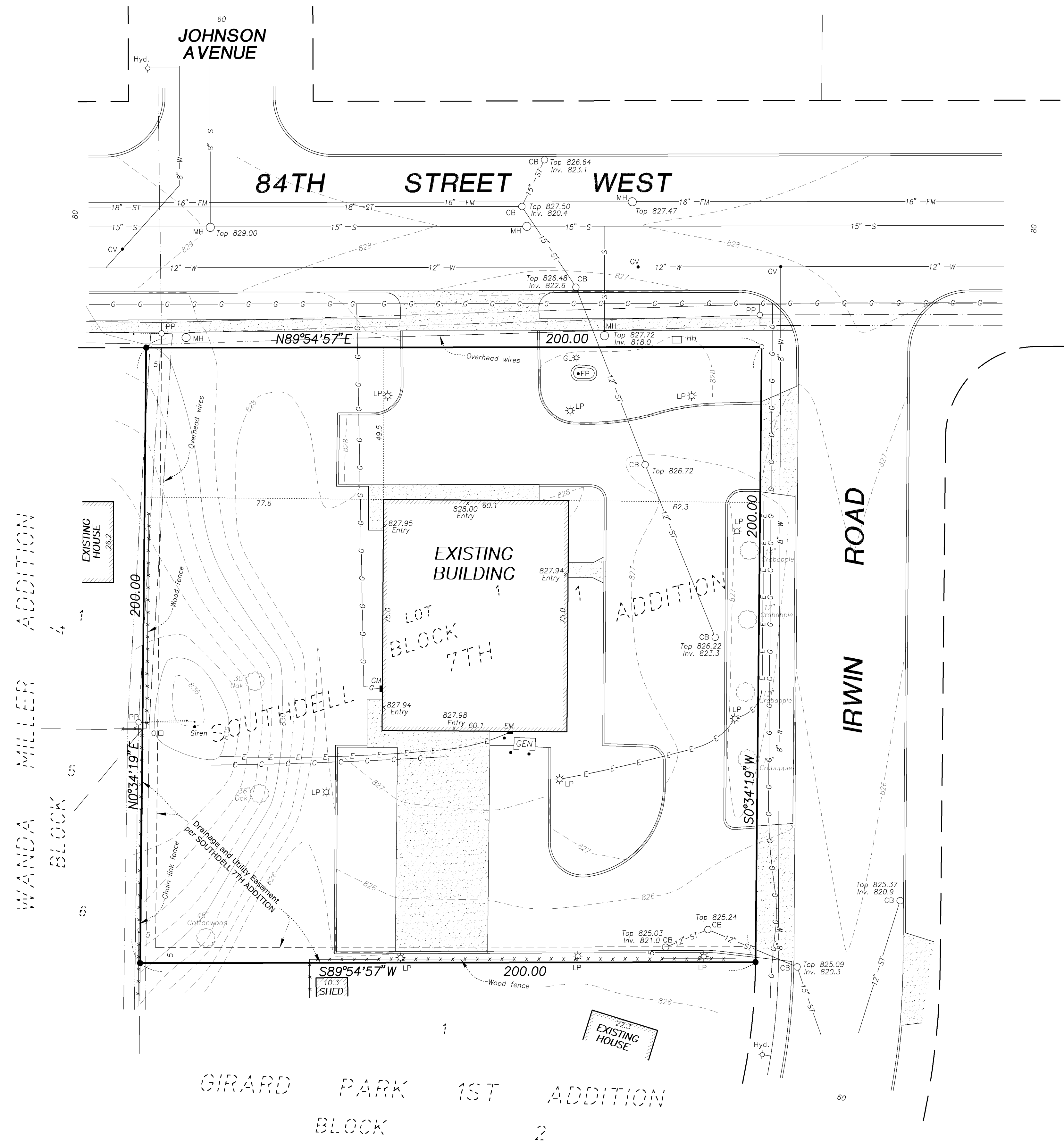


CASE #PL2021-186

Boundary and Topographic Survey for:  
**CNH ARCHITECTS**  
at 4201 84th Street West – Bloomington, Minnesota

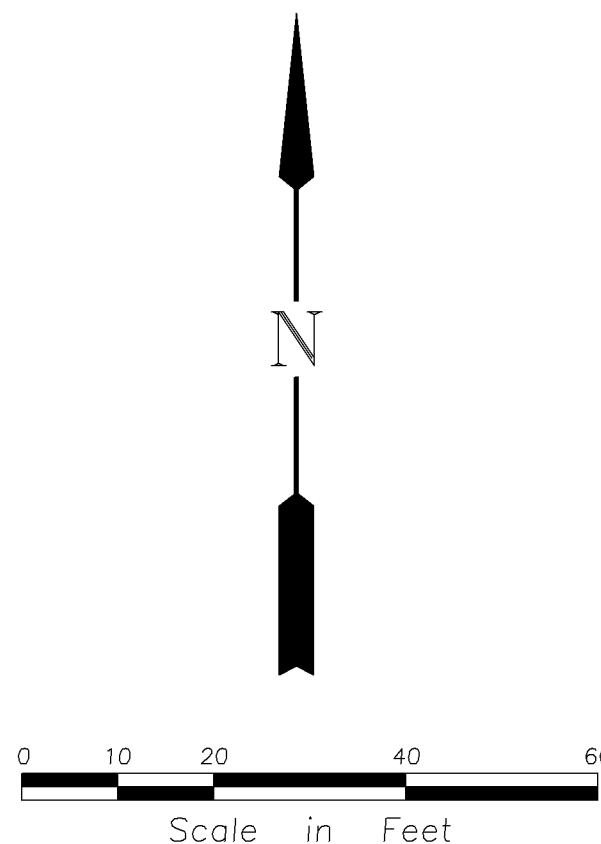


NOTES

- \* Bearings shown are based on the Hennepin County Coordinate System.
- \* Utilities shown are from information furnished by the City of Bloomington and respective utility companies in response to Gopher State One Call Ticket No. 203210696 and are verified where possible.
- \* Contact Gopher State One Call for utility locations before any construction shall begin. Phone 651-454-0002.
- \* Area = 39,997 square feet (0.64 acre).

LEGEND

- Iron Monument Found
- Iron Monument Set
- S— Sanitary Sewer
- ST— Storm Sewer
- W— Watermain
- Hyd. ◊ Hydrant
- GV • Gate Valve
- MH ○ Manhole
- CB ○ Catch Basin
- Inv. Invert Elevation
- Guard Post
- PP ◊ Power Pole
- LP ✱ Light Pole
- GL ✱ Ground Light
- Electrical Transformer
- CD Communications Pedestal
- HH □ Handhole
- Concrete Surface
- Bituminous Surface
- G— Buried Gas
- C— Buried Communications
- E— Buried Electric
- FP Flagpole
- GEN Generator
- Guy Wire
- GM ■ Gas Meter
- EM ■ Electric Meter



UTILITY STATEMENT

The underground utilities shown have been located from field survey information and existing drawings. The surveyor makes no guarantee that the underground utilities shown comprise all such utilities in the area, either in service or abandoned. The surveyor further does not warrant that the underground utilities shown are in the exact location indicated, although he does certify that they are shown as accurately as possible from information available. The surveyor has not physically located the underground utilities.

PROPERTY DESCRIPTION

Lot 1, Block 1, SOUTHDELL 7TH ADDITION, according to the recorded plat thereof, Hennepin County, Minnesota.

I hereby certify that this survey was prepared by me or under my direction and that I am a duly Licensed Land Surveyor under the laws of the State of Minnesota.

Dated this 19th day of November, 2020

REHDER & ASSOCIATES, INC.

Gary C. Huber, Land Surveyor  
Minnesota License No. 22036

**Rehder and Associates, Inc.**  
CIVIL ENGINEERS AND LAND SURVEYORS

3440 Federal Drive • Suite 110 • Eagan, Minnesota • Phone (651) 452-5051

JOB: 204-0508.162