

ROSA ADDITION

C.R. DOC. NO. _____

KNOW ALL PERSONS BY THESE PRESENTS: That Rosa Development Company LLLP, fee owner, of the following described property situated in the County of Hennepin, State of Minnesota, to wit:

Lot 1, Block 1, INTERNATIONAL AIRPORT PARK 5TH ADDITION
Has caused the same to be surveyed and platted as ROSA ADDITION, and does hereby grant to the City of Bloomington the easements for drainage and utility purposes as shown on this plat.

In witness whereof said Rosa Development Company LLLP, a Minnesota limited liability limited partnership has caused these presents to be signed by its proper officer this _____ day of _____, 20__.

SIGNED: Rosa Development Company LLLP
By: Rosa Incorporated, a Minnesota corporation, Managing General Partner

By: _____, as President
Kristin Mala Muir

STATE OF _____
COUNTY OF _____
The foregoing instrument was acknowledged before me this _____ day of _____, 20__, by Kristin Mala Muir, President of Rosa Incorporated, a Minnesota corporation, Managing General Partner of Rosa Development Company LLLP, a Minnesota limited liability limited company, on behalf of the partnership.

Notary Public, _____ County, _____ Notary Printed Name
My Commission Expires _____

I Mark R. Salo do hereby certify that this plat was prepared by me or under my direct supervision; that I am a duly Licensed Land Surveyor in the State of Minnesota; that this plat is a correct representation of the boundary survey; that all mathematical data and labels are correctly designated on this plat; that all monuments depicted on this plat have been, or will be correctly set within one year; that all water boundaries and wet lands, as defined in Minnesota Statutes, Section 505.01, Subd. 3, as of the date of this certificate are shown and labeled on this Plat; and all public ways are shown and labeled on this plat.

Dated this _____ day of _____, 20__.

Mark R. Salo, Licensed Land Surveyor,
Minnesota License No. 43933

STATE OF MINNESOTA
COUNTY OF _____
The foregoing instrument was acknowledged before me this _____ day of _____, 20__, by Mark R. Salo, a Licensed Land Surveyor.

Notary Public, _____ County, Minnesota Notary Printed Name
My Commission Expires _____

Bloomington, MINNESOTA

This plat of ROSA ADDITION was approved and accepted by the City Council of Bloomington, Minnesota, at a regular meeting thereof held this _____ day of _____, 20__. If applicable, the written comments and recommendations of the Commissioner of Transportation and the County Highway Engineer have been received by the City or the prescribed 30-day period has elapsed without receipt of such comments and recommendations, as provided by Minnesota Statutes, Section 505.03, Subdivision 2.

City Council, Bloomington, Minnesota

By: _____ Mayor By: _____ Clerk

RESIDENT AND REAL ESTATE SERVICES, Hennepin County, Minnesota
I hereby certify that taxes payable in 20__ and prior years have been paid for land described on this plat, dated this _____ day of _____, 20__.

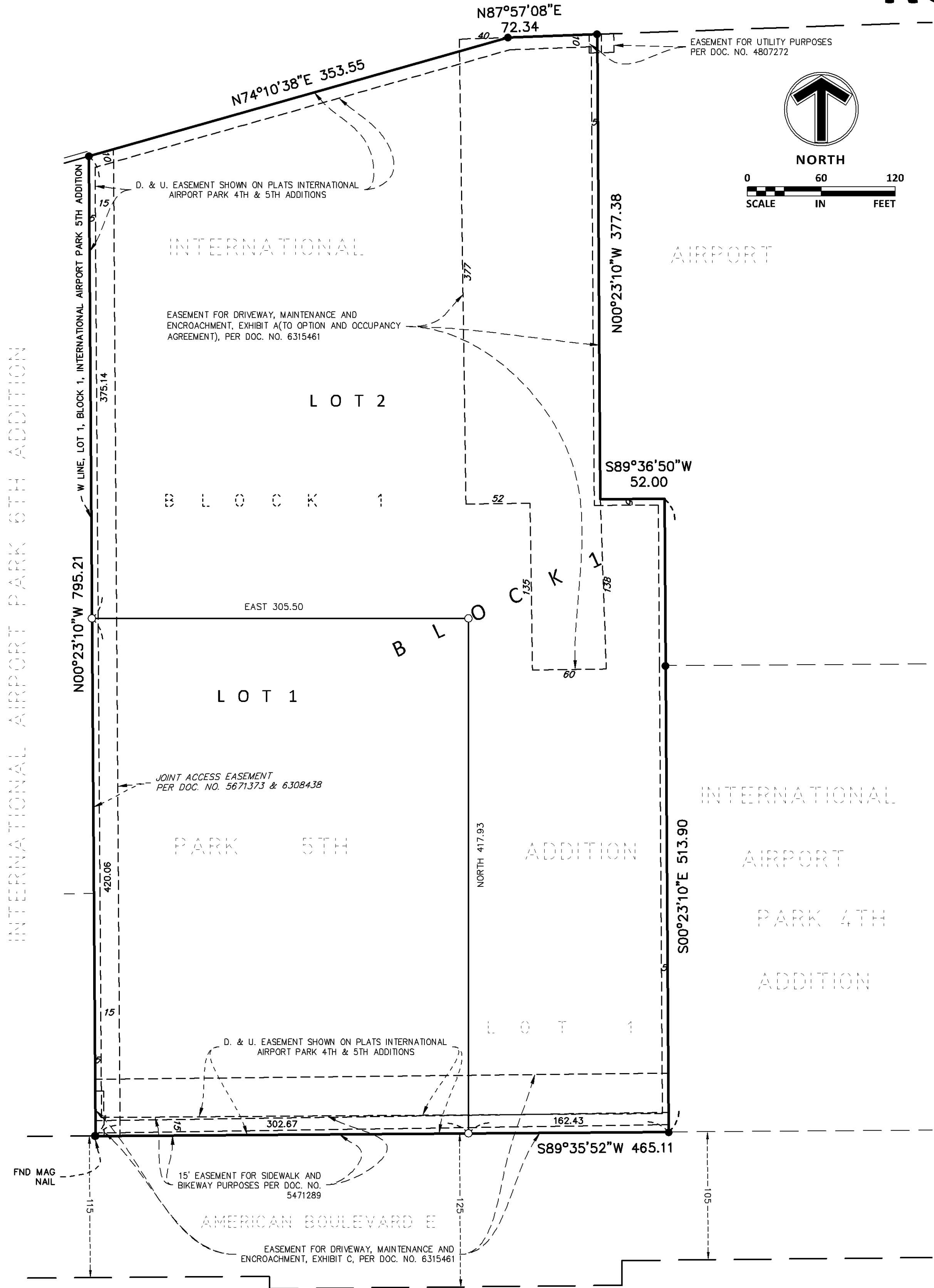
Mark V. Chapin, County Auditor By: _____, Deputy

SURVEY DIVISION, Hennepin County, Minnesota
Pursuant to Minnesota Statutes Section 383B.565 (1969), this plat has been approved this _____ day of _____, 20__.

Chris F. Mavis, County Surveyor By: _____

COUNTY RECORDER, Hennepin County, Minnesota
I hereby certify that the within plat of ROSA ADDITION was recorded in this office this _____ day of _____, 20__, at ____ o'clock ____ .M.

Martin McCormick, County Recorder By: _____, Deputy



- DENOTES 1/2 INCH BY 14 INCH IRON MONUMENT SET AND MARKED BY LICENSE NO. 43933.
- DENOTES 1/2 INCH IRON MONUMENT FOUND.

THE SOUTH LINE OF LOT 1, BLOCK 1, INTERNATIONAL AIRPORT PARK 5TH ADDITION, IS ASSUMED TO HAVE A BEARING OF SOUTH 89 DEGREES 35 MINUTES 52 SECONDS WEST.