

BLOOMINGTON, MN

I HEREBY CERTIFY THAT THIS PLAN,  
SPECIFICATION, OR REPORT WAS PREPARED  
BY ME OR UNDER MY DIRECT SUPERVISION  
AND THAT I AM A DULY LICENSED  
PROFESSIONAL ENGINEER UNDER THE LAWS  
OF THE STATE OF MINNESOTA.

---

Mike R. Kettler

DATE: 6/26/20      REG. NO.:      404

---

INFORMATION:

PROJECT NO.: 05-677

DRAWN BY: JM

QUESTIONS 316 317

CHECKED BY: MA

APPROVED BY: MK

SCALE: \_\_\_\_\_

DATE: 8/28/20

DATE	TIME
------	------

DESCRIPTION:

DEMOLITION PLAN

## DEFINITION 1.2 (IN

---

SHEET NO:

60

60

10/5

CC

102



BLOOMINGTON, M

I HEREBY CERTIFY THAT THIS PLAN,  
SPECIFICATION, OR REPORT WAS PREPARED  
BY ME OR UNDER MY DIRECT SUPERVISION  
AND THAT I AM A DULY LICENSED  
PROFESSIONAL ENGINEER UNDER THE LAWS  
OF THE STATE OF MINNESOTA.

INFORMATION:

DRAWN BY: JM

APPROVED BY: MK

DATE: 01/03/00

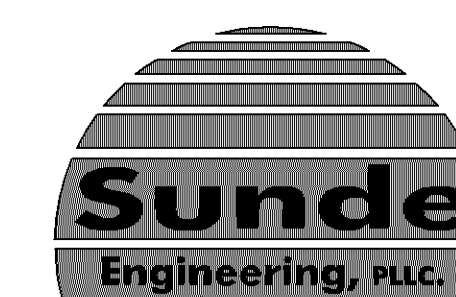
DESCRIPTION:

GRADING,  
DRAINAGE, AND  
EROSION  
CONTROL PLAN

SHEET NO: \_\_\_\_\_

302





CIVIL AND ENVIRONMENTAL  
ENGINEERING SERVICES  
10830 NESBITT AVENUE SOUTH  
BLOOMINGTON, MINNESOTA 55437  
(952) 881-3444 TELEPHONE  
(952) 881-1913 FAX  
WWW.SUNDE-ENG.COM

VERIZON  
WIRELESS

BLOOMINGTON, MN

DATE	REVISION
8/26/20	ORIGINAL PLAN DATE
7/24/20	65% SET
8/21/20	90% SET

I HEREBY CERTIFY THAT THIS PLAN,  
SPECIFICATION, OR REPORT WAS PREPARED  
BY ME OR UNDER MY DIRECT SUPERVISION  
AND THAT I AM A DULY LICENSED  
PROFESSIONAL ENGINEER UNDER THE LAWS  
OF THE STATE OF MINNESOTA

Mike R. Kettler  
DATE: 6/26/20 REG. NO.: 40425

INFORMATION:

PROJECT NO.: 05-877

DRAWN BY: JM

CHECKED BY: MK

APPROVED BY: MK

SCALE:

DATE: 6/26/20

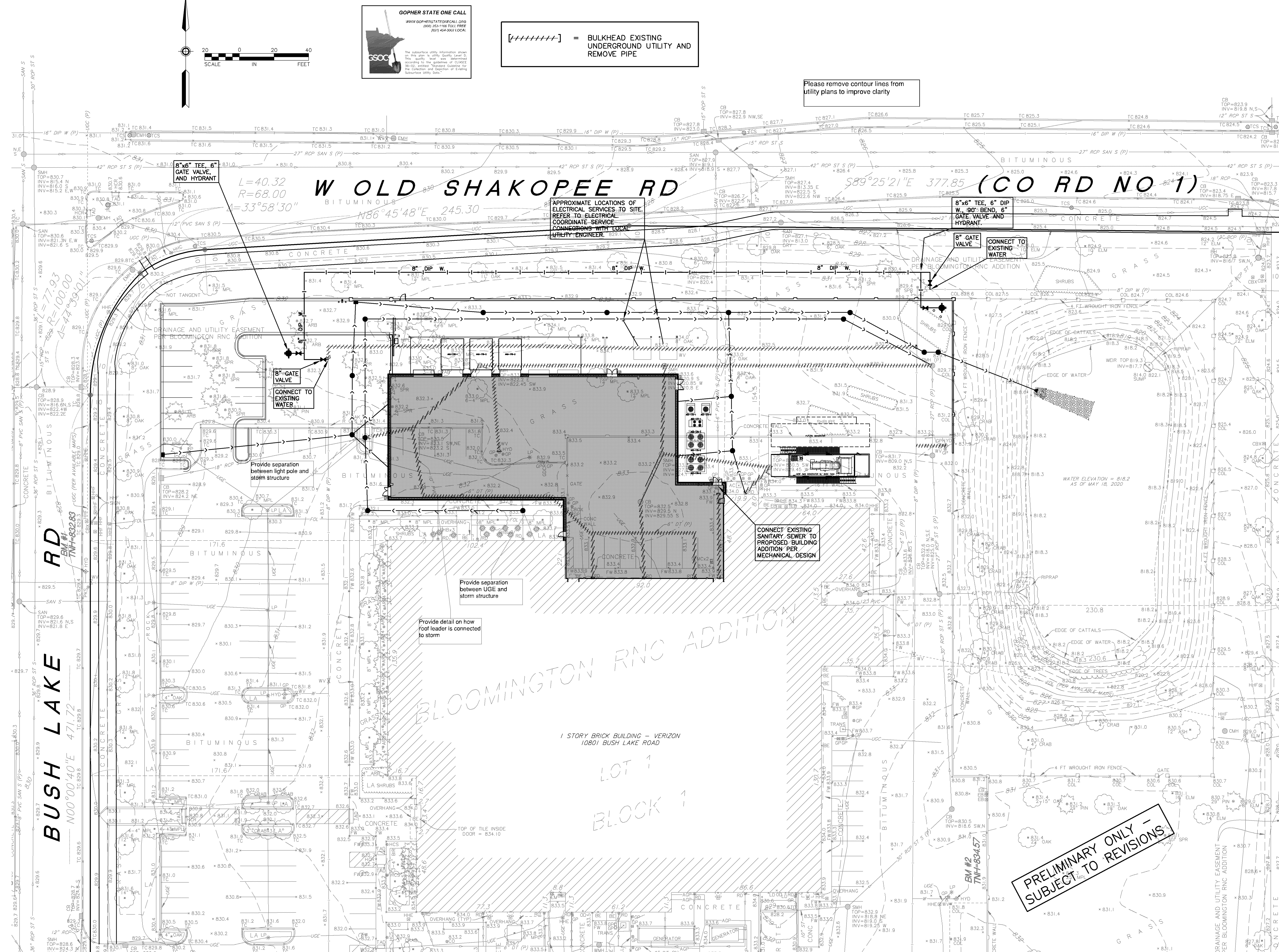
DESCRIPTION:

SITE UTILITIES

SHEET NO:

C2

3/05







Xref\_V001\_ConnectB3\_2024.dwg

1:1

1:1

1:1

1:1

1:1

1:1

1:1

1:1

1:1

1:1

1:1

1:1

1:1

1:1

1:1

1:1

1:1

1:1

1:1

1:1

1:1

1:1

1:1

1:1

1:1

## EXISTING CONDITIONS & SITE REMOVAL NOTES

### SITE REMOVAL NOTES

- EXISTING SITE INFORMATION WAS PROVIDED BY OTHERS. ACTUAL FIELD CONDITIONS MAY VARY. FIELD VERIFY UTILITY LOCATIONS AND ELEVATIONS PRIOR TO CONSTRUCTION.
- THE LOCATIONS OF EXISTING UTILITIES SHOWN ON THIS PLAN HAVE BEEN DETERMINED FROM THE BEST INFORMATION AVAILABLE AND ARE GIVEN FOR THE CONVENIENCE OF THE CONTRACTOR. THE LANDSCAPE ARCHITECT ASSUMES NO RESPONSIBILITY FOR THEIR ACCURACY. PRIOR TO THE START OF DEMOLITION ACTIVITY, THE CONTRACTOR SHALL NOTIFY THE UTILITY COMPANIES FOR ONSITE LOCATIONS OF EXISTING UTILITIES. THE CONTRACTOR IS REQUIRED TO TAKE DUE PRECAUTIONARY MEASURES TO PROTECT EXISTING UTILITIES OR STRUCTURES LOCATED AT THE WORK SITE.
- CONTRACTOR TO VERIFY THE LOCATION OF UNDERGROUND UTILITIES PRIOR TO BEGINNING ANY CONSTRUCTION BY CALLING GOPHER STATE ONE-CALL AT 851-454-0002 (METRO) OR 1-800-252-1166 (OUT-STATE).
- THE CONTRACTOR SHALL COORDINATE WITH RESPECTIVE UTILITY COMPANIES PRIOR TO THE REMOVAL AND/OR RELOCATION OF UTILITIES. THE CONTRACTOR SHALL COORDINATE WITH THE UTILITY COMPANY CONCERNING PORTIONS OF WORK WHICH MAY BE PERFORMED BY UTILITY COMPANY'S FORCES AND FEES WHICH ARE TO BE PAID TO THE UTILITY COMPANY FOR THEIR SERVICES. THE CONTRACTOR IS RESPONSIBLE FOR PAYING FEES AND CHARGES.
- ALWAYS VERIFY BENCHMARK ELEVATIONS BETWEEN TWO BENCHMARKS.
- REMOVAL ITEMS BECOME THE PROPERTY OF THE CONTRACTOR UNLESS SPECIFIED OTHERWISE. THE CONTRACTOR IS RESPONSIBLE FOR REMOVING DEBRIS FROM THE SITE AND DISPOSING THE DEBRIS IN A LAWFUL MANNER PER LOCAL GOVERNING AGENCIES. THE CONTRACTOR IS RESPONSIBLE FOR OBTAINING PERMITS REQUIRED FOR DEMOLITION AND DISPOSAL. FACILITIES TO BE REMOVED SHALL BE UNDERCUT TO SUITABLE MATERIAL AND BROUGHT TO GRADE WITH SUITABLE COMPACTED FILL MATERIAL PER THE SPECIFICATIONS.
- PRIOR TO DEMOLITION, EROSION CONTROL DEVICES ARE TO BE INSTALLED WHERE NECESSARY AND OBTAIN AN NPDES STORM WATER PERMIT. REFER TO CIVIL FOR EROSION CONTROL.
- DAMAGE TO REMAINING EXISTING CONDITIONS WILL BE REPLACED AT CONTRACTOR'S EXPENSE AND SHALL BE EQUAL TO OR EXCEED THE QUALITY OF CONSTRUCTION PRIOR TO DAMAGE.
- CONCRETE PAVEMENT, SIDEWALKS, CURB AND GUTTER, AND OTHER POURED CONCRETE ITEMS ARE TO BE REMOVED TO AN EXISTING EXPANSION OR CONTRACTION JOINT.
- CONTRACTOR SHALL LIMIT SAW-CUT AND PAVEMENT REMOVAL TO ONLY THOSE AREAS WHERE IT IS REQUIRED AS SHOWN ON THESE CONSTRUCTION PLANS. IF DAMAGE IS INCURRED ON THE SURROUNDING PAVEMENT, ETC. THE CONTRACTOR SHALL BE RESPONSIBLE FOR ITS REMOVAL AND REPAIR AT NO ADDITIONAL COST TO THE OWNER. BITUMINOUS PAVEMENT REMOVALS ARE TO BE MADE WITH A VERTICAL SAW CUT OR TO A NEAT MILLED EDGE.
- CONTRACTOR SHALL PRESERVE VEGETATION NOT TO BE REMOVED BY CONSTRUCTION. CONTRACTOR SHALL BE RESPONSIBLE FOR RE-SEEDING OR SODDING AREAS DISTURBED BY CONSTRUCTION.
- LOCATION AND ELEVATIONS OF IMPROVEMENTS TO BE MET (OR AVOIDED) SHALL BE CONFIRMED BY THE CONTRACTOR THROUGH FIELD EXPLORATIONS PRIOR TO CONSTRUCTION. CONTRACTOR SHALL REPORT TO THE LANDSCAPE ARCHITECT DISCREPANCIES BETWEEN THEIR MEASUREMENTS AND THESE PLANS. CONTRACTOR SHALL ALSO MAKE EXPLORATION EXCAVATIONS AND LOCATE EXISTING UNDERGROUND UTILITIES SUFFICIENTLY AHEAD OF CONSTRUCTION TO PERMIT REVISIONS TO PLANS IF REVISIONS ARE NECESSARY BECAUSE OF ACTUAL LOCATION OF EXISTING FACILITIES. CONTRACTOR IS REQUIRED TO TAKE PRECAUTIONARY MEASURES TO PROTECT THE UTILITY LINES SHOWN AND OTHER EXISTING LINES NOT OF RECORD OR NOT SHOWN ON THESE PLANS.
- EXISTING UTILITIES TO REMAIN IN PLACE UNLESS SPECIFICALLY MARKED ON THIS SHEET.
- CONTRACTOR SHALL REVIEW THE SITE FOR DEFICIENCIES IN SITE CONDITIONS WHICH MIGHT NEGATIVELY AFFECT PLANT ESTABLISHMENT, SURVIVAL OR WARRANTY. UNDESIRABLE SITE CONDITIONS SHALL BE BROUGHT TO THE ATTENTION OF THE LANDSCAPE ARCHITECT PRIOR TO COMMENCEMENT OF WORK.
- CONTRACTOR IS RESPONSIBLE FOR ONGOING MAINTENANCE OF NEWLY INSTALLED MATERIALS UNTIL TIME OF SUBSTANTIAL COMPLETION. REPAIR OF ACTS OF VANDALISM OR DAMAGE WHICH MAY OCCUR PRIOR TO SUBSTANTIAL COMPLETION SHALL BE THE RESPONSIBILITY OF THE LANDSCAPE CONTRACTOR.
- EXISTING TREES OR SIGNIFICANT SHRUB MASSINGS FOUND ON SITE SHALL BE PROTECTED AND SAVED UNLESS NOTED TO BE REMOVED OR ARE LOCATED IN AN AREA TO BE GRADED. QUESTIONS REGARDING EXISTING PLANT MATERIAL SHALL BE BROUGHT TO THE ATTENTION OF THE LANDSCAPE ARCHITECT PRIOR TO REMOVAL.
- EXISTING TREES TO REMAIN, UPON DIRECTION OF LANDSCAPE ARCHITECT, SHALL BE FERTILIZED AND PRUNED TO REMOVE DEAD WOOD, DAMAGED AND RUBBING BRANCHES.
- CONTRACTOR SHALL PREPARE AND SUBMIT A WRITTEN REQUEST FOR THE SUBSTANTIAL COMPLETION INSPECTION OF LANDSCAPE AND SITE IMPROVEMENTS PRIOR TO SUBMITTING FINAL PAY REQUEST.
- CONTRACTOR SHALL PREPARE AND SUBMIT REPRODUCIBLE AS-BUILT DRAWING(S) OF LANDSCAPE INSTALLATION, IRRIGATION AND SITE IMPROVEMENTS UPON COMPLETION OF CONSTRUCTION INSTALLATION AND PRIOR TO SUBSTANTIAL COMPLETION.
- SYMBOLS ON PLAN DRAWING TAKE PRECEDENCE OVER SCHEDULES IF DISCREPANCIES IN QUANTITIES EXIST. SPECIFICATIONS AND DETAILS TAKE PRECEDENCE OVER NOTES.

### SOIL TESTING

- CONTRACTOR SHALL OBTAIN A SOIL SAMPLE(S) FROM PROJECT SITE AND/OR SALVAGED TOPSOIL STOCKPILE AND SUBMIT TO INDEPENDENT TESTING AGENCY. ANALYSIS AND RECOMMENDATIONS FOR (INCLUDING BUT NOT LIMITED TO) MACRONUTRIENTS, MICRONUTRIENTS, COMPOSITION AND SOLUBLE SALTS SHALL BE PROVIDED.
- CONTRACTOR SHALL PROVIDE TWO SERIES OF TESTS: FIRST, PRIOR TO CONSTRUCTION; SECOND, AFTER SOIL IS AMENDED, PRIOR TO PLANTING.
- CONTRACTOR SHALL PROVIDE ANALYSIS RESULTS AND RECOMMENDATIONS TO THE LANDSCAPE ARCHITECT FOR REVIEW AND APPROVAL PRIOR TO SOIL AMENDMENT AND PRIOR TO PLANTING.

### GRADING

- ROUGH GRADING AND FINISHED GRADING TO BE DONE BY OTHERS EXCEPT WHERE NOTED.
- GRADING LIMITS ARE DEFINED AS THE JUNCTURE OF PROPOSED GRADE WITH EXISTING GRADE UNLESS NOTED OTHERWISE.
- GRADING LIMITS AND LIMITS OF WORK SHOWN ON PLAN ARE ONLY APPROXIMATE AND MAY BE ADJUSTED IN FIELD BY LANDSCAPE ARCHITECT. WORK OUTSIDE OF THESE LIMITS WILL BE DONE AT LANDSCAPE CONTRACTORS EXPENSE UNLESS DIRECTED BY LANDSCAPE ARCHITECT OR OWNER IN WRITING.
- FILL/CUT AS NECESSARY TO PROVIDE A 1% MINIMUM GRADE AWAY FROM BUILDINGS WITHIN LIMITS OF CONSTRUCTION.
- SALVAGE TOPSOIL FROM THE EARTHWORK AREAS AS APPROPRIATE OR AS INDICATED ON PLANS AND STOCKPILE FOR REUSE.
- MAINTAIN A UNIFORM GRADE BETWEEN CONTOURS IN AREAS TO BE GRADED UNLESS NOTED OTHERWISE.
- ELEVATIONS, IF SHOWN ARE FINISHED ELEVATIONS. SPOT ELEVATIONS TAKE PRECEDENCE OVER CONTOURS.
- ADD EROSION CONTROL MEASURES IF GRADES GREATER THAN 3:1 OR IF CONDITIONS WARRANT. REFER TO MNDOT SPECIFICATIONS FOR EROSION CONTROL.
- CONTRACTOR SHALL CONTACT PUBLIC UTILITIES FOR LOCATION OF UNDERGROUND WIRES, CABLES, CONDUITS, PIPES, MANHOLES, VALVES OR OTHER BURIED STRUCTURES BEFORE DIGGING. LANDSCAPE CONTRACTOR SHALL REPAIR OR REPLACE THE ABOVE IF DAMAGED DURING CONSTRUCTION AT NO ADDITIONAL COST TO THE OWNER.
- CONTRACTOR SHALL PROVIDE PROPER EROSION CONTROL MEASURES AS REQUIRED TO ENSURE THAT EROSION IS KEPT TO AN ABSOLUTE MINIMUM.
- PROVIDE TEMPORARY COVERING FOR CATCH BASINS AND MAN HOLES UNTIL FINISHED GRADING IS COMPLETE.
- CONTRACTOR SHALL CONSTRUCT DRAINAGE BASINS AS NEEDED.
- PERIMETER SILT FENCE AND ROCK CONSTRUCTION ENTRANCES SHALL BE INSTALLED PRIOR TO CONSTRUCTION. REFER TO STATE SPECIFICATIONS FOR AGGREGATE BASE AND SILT FENCE.
- CONTRACTOR SHALL INSTALL CATCH BASIN EROSION CONTROL MEASURES PER LOCAL POLLUTION CONTROL AGENCY AND SPECIFICATIONS.
- WITHIN TWO WEEKS OF FINISHED SITE GRADING, DISTURBED AREAS SHALL BE STABILIZED WITH SEED, SOD, MULCH OR ROCK BASE.
- CONTRACTOR SHALL MAINTAIN EROSION CONTROL MEASURES, INCLUDING THE REMOVAL OF ACCUMULATED SILT IN FRONT OF SILT FENCES AND EXCESS SEDIMENT IN PROPOSED CATCH BASINS, FOR THE DURATION OF CONSTRUCTION.
- CONTRACTOR SHALL REMOVE EROSION CONTROL MEASURES AFTER VEGETATION IS ESTABLISHED AND DISPOSE OF OFF SITE.
- CONTRACTOR SHALL ENSURE THAT SOIL CONDITIONS AND COMPACTION ARE ADEQUATE TO ALLOW FOR PROPER DRAINAGE AROUND THE CONSTRUCTION SITE. UNDESIRABLE CONDITIONS SHALL BE BROUGHT TO THE ATTENTION OF THE LANDSCAPE ARCHITECT PRIOR TO BEGINNING OF WORK. IT SHALL BE THE LANDSCAPE CONTRACTOR'S RESPONSIBILITY TO ENSURE PROPER SURFACE AND SUBSURFACE DRAINAGE IN PLANTING AREAS.

### PLANTING

- SPRING PLANT MATERIAL INSTALLATION IS FROM APRIL 15 TO JUNE 15.
  - FALL CONIFEROUS PLANTING IS ACCEPTABLE FROM AUGUST 21 TO SEPTEMBER 30.
  - FALL DECIDUOUS PLANTING IS ACCEPTABLE FROM AUGUST 15 UNTIL NOVEMBER 15.
  - ADJUSTMENTS TO PLANTING DATES MUST BE APPROVED IN WRITING BY THE LANDSCAPE ARCHITECT.
  - STAKE PROPOSED PLANTING LOCATIONS PER PLAN FOR REVIEW AND APPROVAL BY LANDSCAPE ARCHITECT PRIOR TO INSTALL.
  - PLANT MATERIAL SHALL COMPLY WITH THE CURRENT EDITION OF THE AMERICAN STANDARD FOR NURSERY STOCK, ANSI Z60.1. UNLESS NOTED OTHERWISE, DECIDUOUS SHRUBS SHALL HAVE AT LEAST 5 CANES AT THE SPECIFIED HEIGHT. ORNAMENTAL TREES SHALL HAVE NO "V" CROTCHES AND SHALL BEGIN BRANCHING NO LOWER THAN 3' FEET ABOVE THE ROOT BALL. STREET AND BOULEVARD TREES SHALL BEGIN BRANCHING NO LOWER THAN 6' ABOVE PAVED SURFACE.
  - INSTALL PLANT MATERIAL AFTER FINAL GRADING AND CONSTRUCTION HAS BEEN COMPLETED IN THE IMMEDIATE AREA.
  - INSTALL PLANT MATERIALS PER PLANTING DETAILS (SHEET L500).
  - SUBSTITUTION REQUESTS FOR PLANT MATERIAL TYPE & SIZE SHALL BE SUBMITTED TO THE LANDSCAPE ARCHITECT FOR CONSIDERATION PRIOR TO BIDDING. SUBSTITUTIONS AFTER BIDDING MUST BE APPROVED BY LANDSCAPE ARCHITECT AND ARE SUBJECT TO CONTRACT ADJUSTMENTS.
  - ADJUSTMENTS IN LOCATION OF PROPOSED PLANT MATERIALS MAY BE NEEDED IN FIELD. LANDSCAPE ARCHITECT MUST BE NOTIFIED PRIOR TO ADJUSTMENT OF PLANTS.
  - FERTILIZE PLANT MATERIAL UPON INSTALLATION WITH DRIED BONE MEAL AND OTHER APPROVED FERTILIZER MIXED IN WITH THE PLANTING SOIL (PER THE MANUFACTURER'S INSTRUCTIONS) OR TREAT FOR SUMMER AND FALL INSTALLATION WITH AN APPLICATION OF GRANULAR 10-0-5 OF 12 OZ. PER 2.5" CALIPER TREE AND 6 OZ. PER SHRUB WITH AN ADDITIONAL APPLICATION OF 10-0-10 THE FOLLOWING SPRING IN THE TREE SAUCER.
  - INSTALL 18" DEPTH OF PLANTING SOIL IN AREAS RECEIVING GROUND COVER, PERENNIALS, AND ANNUALS. PLANTING SOIL SHALL CONSIST OF MNDOT 3877-B MODIFIED TO CONTAIN A MAXIMUM OF 30% SAND, A PH OF 7.1 MAX, OR AS OTHERWISE SPECIFIED IN THE PROJECT SPECIFICATIONS MANUAL.
  - TREE WRAPPING MATERIAL SHALL BE PAPER APPLIED FROM TRUNK FLARE TO FIRST BRANCH. WRAP SMOOTH-BARKED DECIDUOUS TREES PLANTED IN THE FALL PRIOR TO DECEMBER 1 AND REMOVE WRAPPING AFTER MAY 1.
  - APPLY PRE-EMERGENT HERBICIDE (PREEN OR APPROVED EQUAL) IN ANNUAL, PERENNIAL, AND SHRUB BEDS FOLLOWED BY SHREDDED HARDWOOD MULCH. REFER TO SPECIFICATIONS FOR ADDITIONAL INFORMATION REGARDING USE OF HERBICIDES.
- ### MULCHING
- INSTALL 4" DEEP FINELY SHREDDED HARDWOOD MULCH RINGS AT NEWLY PLANTED CONIFEROUS TREES WITH NO MULCH IN DIRECT CONTACT WITH TREE TRUNK.
  - INSTALL 3" DEEP FINELY SHREDDED HARDWOOD MULCH RINGS AT SHRUB PLANTING AREAS WITH NO MULCH IN DIRECT CONTACT WITH SHRUB STEMS.
  - INSTALL 3" DEEP FINELY SHREDDED MULCH IN PERENNIAL PLANTING BEDS. REMOVE ALL MULCH FROM STEMS OF PERENNIALS; PLANT STEMS SHALL NOT BE IN DIRECT CONTACT WITH MULCH.
- ### WATERING
- PLANTED MATERIALS SHALL BE WATERED BY TEMPORARY MEANS UNTIL PLANTS ARE ESTABLISHED.
  - TEMPORARY WATERING MEANS, METHODS, AND SCHEDULING SHALL BE THE CONTRACTOR'S RESPONSIBILITY. REMOVE TEMPORARY WATERING EQUIPMENT UPON PLANT ESTABLISHMENT.
- ### WARRANTY
- WARRANTY NEW PLANT MATERIAL THROUGH ONE CALENDAR YEAR FROM THE DATE OF SUBSTANTIAL COMPLETION. NO PARTIAL ACCEPTANCE WILL BE CONSIDERED.

## TURF NOTES

- SOD AREAS DISTURBED DUE TO GRADING UNLESS NOTED OTHERWISE.
- WHERE SOD ABUTS PAVED SURFACES, FINISHED GRADE OF SOD/SEED SHALL BE HELD 1" BELOW SURFACE ELEVATION OF TRAIL, SLAB, CURB, ETC.
- SOD SHALL BE LAID PARALLEL TO THE CONTOURS AND SHALL HAVE STAGGERED JOINTS. ON SLOPES STEEPER THAN 3:1 OR IN DRAINAGE SWALES, SOD SHALL BE STAKED SECURELY WITH WOODEN STAKES; NO METAL STAKES ARE ALLOWED.
- UNLESS NOTED OTHERWISE, THE APPROPRIATE DATES FOR SPRING SEED & SOD PLACEMENT IS FROM THE TIME GROUND HAS THAWED TO JUNE 15.
- FALL SODDING IS ACCEPTABLE FROM AUGUST 15 TO NOVEMBER 1. FALL SEEDING IS ACCEPTABLE FROM AUGUST 15 TO SEPTEMBER 15. ADJUSTMENTS TO SOD/SEED PLANTING DATES MUST BE APPROVED IN WRITING BY THE LANDSCAPE ARCHITECT.
- NO SOD NETTING ALLOWED ON SITE.

## PLANT SCHEDULE

DECIDUOUS TREES	CODE	QTY	BOTANICAL / COMMON NAME	SIZE	CONT.	NOTES		REMARKS
	AA	4	ACER X FREEMANII 'JEFFSRED' TM / AUTUMN BLAZE MAPLE	2" CAL.	B&B	SINGLE LEADER, WELL BRANCHED		
	QM	1	QUERCUS MACROCARPA / BURR OAK	2" CAL.	B&B	SINGLE LEADER, WELL BRANCHED		
	QR	5	QUERCUS RUBRA / RED OAK	2" CAL.	B&B	SINGLE LEADER, WELL BRANCHED		
EVERGREEN TREES	CODE	QTY	BOTANICAL / COMMON NAME	SIZE	CONT.	NOTES		REMARKS
	PD	3	PICEA GLAUCA 'DENSATA' / BLACK HILLS SPRUCE	6' HT.	B&B	FULL FORM TO GRADE		
	PI-P	2	PINUS PONDEROSA / PONDEROSA PINE	6' HT.	B&B	FULL FORM TO GRADE		
DECIDUOUS SHRUBS	CODE	QTY	BOTANICAL / COMMON NAME	SIZE	CONT.	NOTES	SPACING	REMARKS
	CL	87	COTONEASTER LUCIDUS / SHINY COTONEASTER	#3	CONT.	SPACE 3'-0" O.C.	36" o.c.	
	RT	8	RHUS TYPHINA / STAGHORN SUMAC	#3	CONT.	SPACE 3'-0" O.C.	36" o.c.	
	SN	44	SPIRAEA X BUMALDA 'NEON FLASH' / NEON FLASH SPIREA	#3	CONT.	SPACE 3'-0" O.C.	36" o.c.	
EVERGREEN SHRUBS	CODE	QTY	BOTANICAL / COMMON NAME	SIZE	CONT.	NOTES	SPACING	REMARKS
	TF	24	TAXUS CUSPIDATA 'FASTIGIATE' / UPRIGHT JAPANESE YEW	#5	CONT.	PLANT AS INDICATED ON PLAN	120" o.c.	
	TT	252	TAXUS X MEDIA 'TAUNTONII' / TAUNTON'S YEW	#5	CONT.	SPACE 5'-0" O.C.	60" o.c.	
PERENNIALS	CODE	QTY	BOTANICAL / COMMON NAME	SIZE	CONT.	NOTES	SPACING	REMARKS
	HR	15	HOSTA X 'ROYAL STANDARD' / PLANTAIN LILY	#1	CONT.	SPACE 3'-0" O.C.	36" o.c.	
	RG	127	RUDBECKIA FULGIDA SULLIVANTII 'GOLDSTURM' / BLACK-EYED SUSAN	#1	CONT.	SPACE 2'-0" O.C.	24" o.c.	

## IRRIGATION NOTES

- CONTRACTOR SHALL BE RESPONSIBLE FOR PROVIDING AN IRRIGATION LAYOUT PLAN AND SPECIFICATION THAT MEETS THE REQUIREMENTS OF THE PROVIDED PERFORMANCE SPECIFICATION AS PART OF THE SCOPE OF WORK. SUBMIT LAYOUT PLAN AND SPECIFICATIONS FOR APPROVAL BY THE LANDSCAPE ARCHITECT PRIOR TO ORDER AND/OR CONSTRUCTION. IT SHALL BE THE CONTRACTOR'S RESPONSIBILITY TO ENSURE THAT SODDED/SEEDED AND PLANTED AREAS ARE IRRIGATED PROPERLY, INCLUDING THOSE AREAS DIRECTLY AROUND AND ABUTTING BUILDING FOUNDATION.
- CONTRACTOR SHALL FIELD VERIFY WATER SUPPLY, VOLUME, PRESSURE AND LOCATION FOR SYSTEM TAP PRIOR TO SYSTEM DESIGN.
- CONTRACTOR SHALL FIELD VERIFY AND INSPECT EXISTING IRRIGATION SYSTEM LAYOUT, EQUIPMENT, CONDITION AND OPERABILITY PRIOR TO SYSTEM DESIGN.
- CONTRACTOR SHALL CONFIRM COMPLETE LIMITS OF IRRIGATION WITH LANDSCAPE ARCHITECT PRIOR TO SUPPLYING SHOP DRAWINGS.
- CONTRACTOR SHALL CONTACT LANDSCAPE ARCHITECT FOR INSPECTION AND APPROVAL OF AREAS RECEIVING DRIP IRRIGATION PRIOR TO INSTALLATION OF MULCH.
- CONTRACTOR SHALL PROVIDE THE OWNER AND LANDSCAPE ARCHITECT WITH AS-BUILT DRAWINGS, DETAILED SYSTEM OPERATION INSTRUCTIONS AND AN IRRIGATION SCHEDULE APPROPRIATE TO THE PROJECT SITE CONDITIONS AND PLANTED MATERIAL GROWTH REQUIREMENTS.

Keep irrigation outside of easements and ROW areas

I hereby certify that this document was prepared by me or under my direct supervision and that I am a duly licensed Landscape Architect under the laws of the State of Minnesota.

Name \_\_\_\_\_  
Registration# \_\_\_\_\_

Signature \_\_\_\_\_ Date \_\_\_\_\_

**verizon**

THIS SERVICE AND OFFERING IS ONLY AVAILABLE TO SELECTED VERIZON CUSTOMERS. VERIZON IS NOT PROVIDING ANY SERVICE OR OFFERING TO ANY OTHER VERIZON CUSTOMERS. VERIZON IS NOT PROVIDING ANY SERVICE OR OFFERING TO ANY OTHER VERIZON CUSTOMERS. VERIZON IS NOT PROVIDING ANY SERVICE OR OFFERING TO ANY OTHER VERIZON CUSTOMERS.

**m** MORRISON HERSHFELD  
**MISSION CRITICAL**  
1455 LINCOLN PARKWAY, SUITE 500  
ATLANTA, GA 30346  
TEL: 770.378.8500 FAX: 770.378.8501  
WWW.MORRISONHERSFELD.COM

THIS SERVICE AND OFFERING IS ONLY AVAILABLE TO SELECTED VERIZON CUSTOMERS. VERIZON IS NOT PROVIDING ANY SERVICE OR OFFERING TO ANY OTHER VERIZON CUSTOMERS. VERIZON IS NOT PROVIDING ANY SERVICE OR OFFERING TO ANY OTHER VERIZON CUSTOMERS. VERIZON IS NOT PROVIDING ANY SERVICE OR OFFERING TO ANY OTHER VERIZON CUSTOMERS.

SUBCONSULTANT

**DF/** DAMON FARBER  
**LANDSCAPE ARCHITECTS**  
310 South 4th Avenue, Suite 7050  
Minneapolis, MN 55415 p: 612.332.7522

NOT FOR  
CONSTRUCTION

**verizon**  
BLOOMINGTON MSC EXPANSION  
10801 BUSH LAKE ROAD  
BLOOMINGTON, MN.

△ REV DESCRIPTION DATE

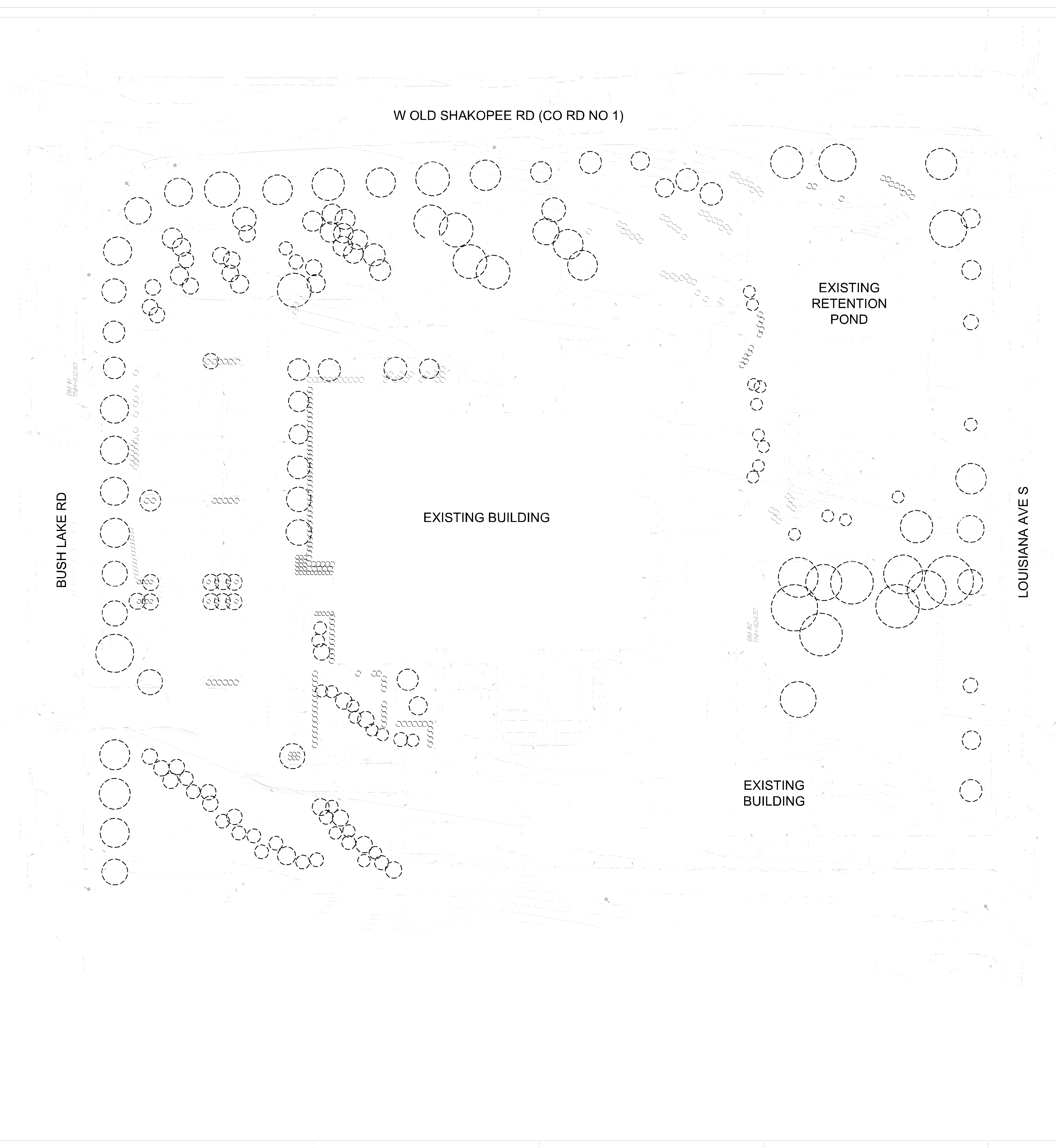
NETWORK COMPLIANCE SUBMITTALS DATE  
ISSUED FOR 90% REVIEW 09/21/2020  
ISSUED FOR CITY REVIEW 09/02/2020

PROJECT NO: 220174606  
CAD DWG FILE:  
DESIGNED BY: MJR  
DRAWN BY: MJR  
CHECKED BY: TW  
COPYRIGHT: APRIL, 2020



STAMP

SHEET TITLE  
LANDSCAPE NOTES  
& SCHEDULE

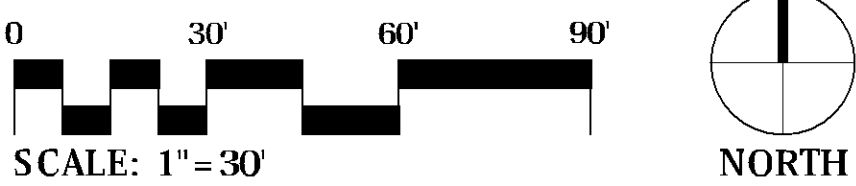
SHEET NUMBER  
L003



## EXISTING LANDSCAPE SURVEY

-  170 EXISTING TREES  
 290 EXISTING SHRUBS

SEE SHEET L006 FOR CITY OF BLOOMINGTON  
LANDSCAPE REQUIREMENTS AND PLANT  
MATERIAL TABULATIONS



I hereby certify that this document was prepared by me or under my direct supervision and that I am a duly licensed Landscape Architect under the laws of the State of Minnesota.

Name \_\_\_\_\_

Registration# \_\_\_\_\_

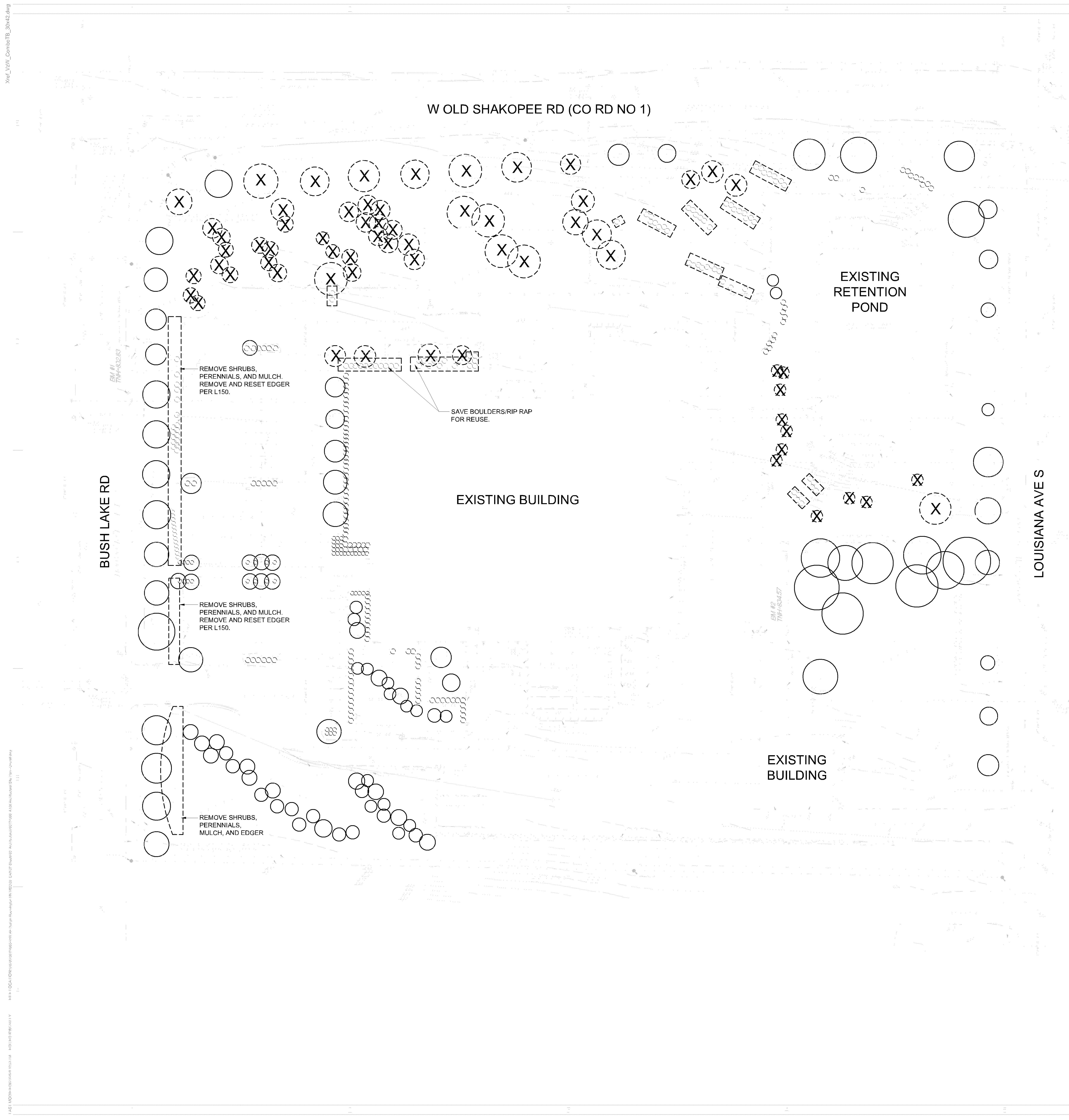
Signature	Date
-----------	------

NETWORK COMPLIANCE SUBMITTALS	DATE
ISSUED FOR 90% REVIEW	08/21/2020
ISSUED FOR CITY REVIEW	09/02/2020



PROJECT NO:	200174900
CAD DWG FILE:	
DESIGNED BY:	MJR
DRAWN BY:	MJR
CHECKED BY:	TW
COPYRIGHT:	APRIL, 2020

## ING E SURVEY



# L004



## LANDSCAPE LEGEND AND PLANT TABULATIONS

- |                                                                                     |            |                                 |
|-------------------------------------------------------------------------------------|------------|---------------------------------|
|  | 170        | EXISTING TREES (SHEET L004)     |
|  | 64         | TREES REMOVED                   |
|                                                                                     | <u>15</u>  | <u>TREES ADDED (SHEET L150)</u> |
|                                                                                     | <b>121</b> | <b>TOTAL TREES</b>              |

City Code requires 1 tree per 2,500 square feet of lot area. Given the size of the property 157 trees are required. The plan is deficient as currently depicted.

- |                                                                                     |            |                                  |
|-------------------------------------------------------------------------------------|------------|----------------------------------|
|  | 290        | EXISTING SHRUBS (SHEET L004)     |
|  | 101        | SHRUBS REMOVED                   |
|                                                                                     | <u>415</u> | <u>SHRUBS ADDED (SHEET L150)</u> |
|                                                                                     | <b>604</b> | <b>TOTAL SHRUBS</b>              |

City Code requires 1 shrub per 1,000 square feet of lot area. Given the size of the property, 392 trees are required. The plan meets required the shrub quantity.

## CITY OF BLOOMINGTON LANDSCAPE REQUIREMENTS

1 TREE PER 2,500 SF SITE AREA  
1 SHRUB PER 1,000 SF SITE AREA

175,228 SF TOTAL SITE AREA

175,288 / 2,500 = 70 TREES REQUIRED  
121 TREES PROVIDED

175,288 / 1,000 = **175 SHRUBS REQUIRED**  
**604 SHRUBS PROVIDED**

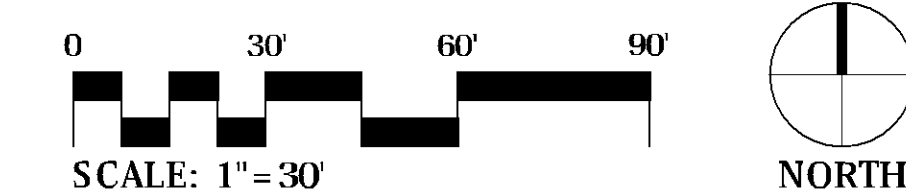
I hereby certify that this document was prepared by me or under my direct supervision and that I am a duly licensed Landscape Architect under the laws of the State of Minnesota.

Name \_\_\_\_\_

Registration# \_\_\_\_\_

---

Signature	Date
-----------	------



The program was designed specifically for the use of children with the most severe mental retardation. The program was developed by the author, who has been working with children with severe mental retardation for over 20 years. The program is designed to be used by teachers and parents who are working with children with severe mental retardation. The program is designed to be used by teachers and parents who are working with children with severe mental retardation.



1455 LINCOLN PARKWAY, SUITE 500  
ATLANTA, GA 30346  
TEL: 770.379.8500 FAX: 770.379.8501  
WWW.MORRISONHERSHFIELD.COM

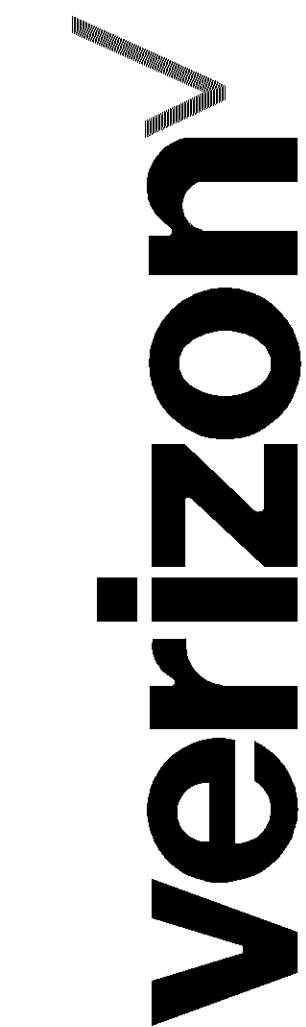
As for some drawings, Commission Model 1801, 2 contains the drawings and written descriptions of only three of the drawings. No drawings or descriptions of any kind are in the Commissioned Aircraft Order Aircraft Inventory, 3 drawings issued in the drawing and the subsequent 1975-1976 period, 4 drawings and descriptions remain the property of Universal Aircraft Corporation.

SUBCONSULTANT



310 South 4th Avenue, Suite 7050  
Minneapolis, MN 55415 p: 612.332.7522

NOT FOR  
CONSTRUCTION



**BLOOMINGTON MSC EXPANSION**  
10801 BUSH LAKE ROAD  
BLOOMINGTON, MN.

[illegible]

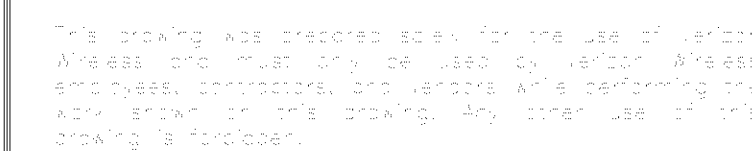
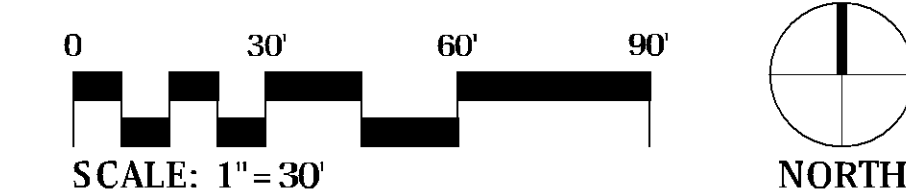
### PLANTING LEGEND

 EXISTING SHRUB

**SEE SHEET L500 FOR PLANTING DETAILS**

---

Signature	Date
-----------	------



NOT FOR  
CONSTRUCTION

**BLOOMINGTON MSC EXPANSION**  
10801 BUSH LAKE ROAD  
BLOOMINGTON, MN.

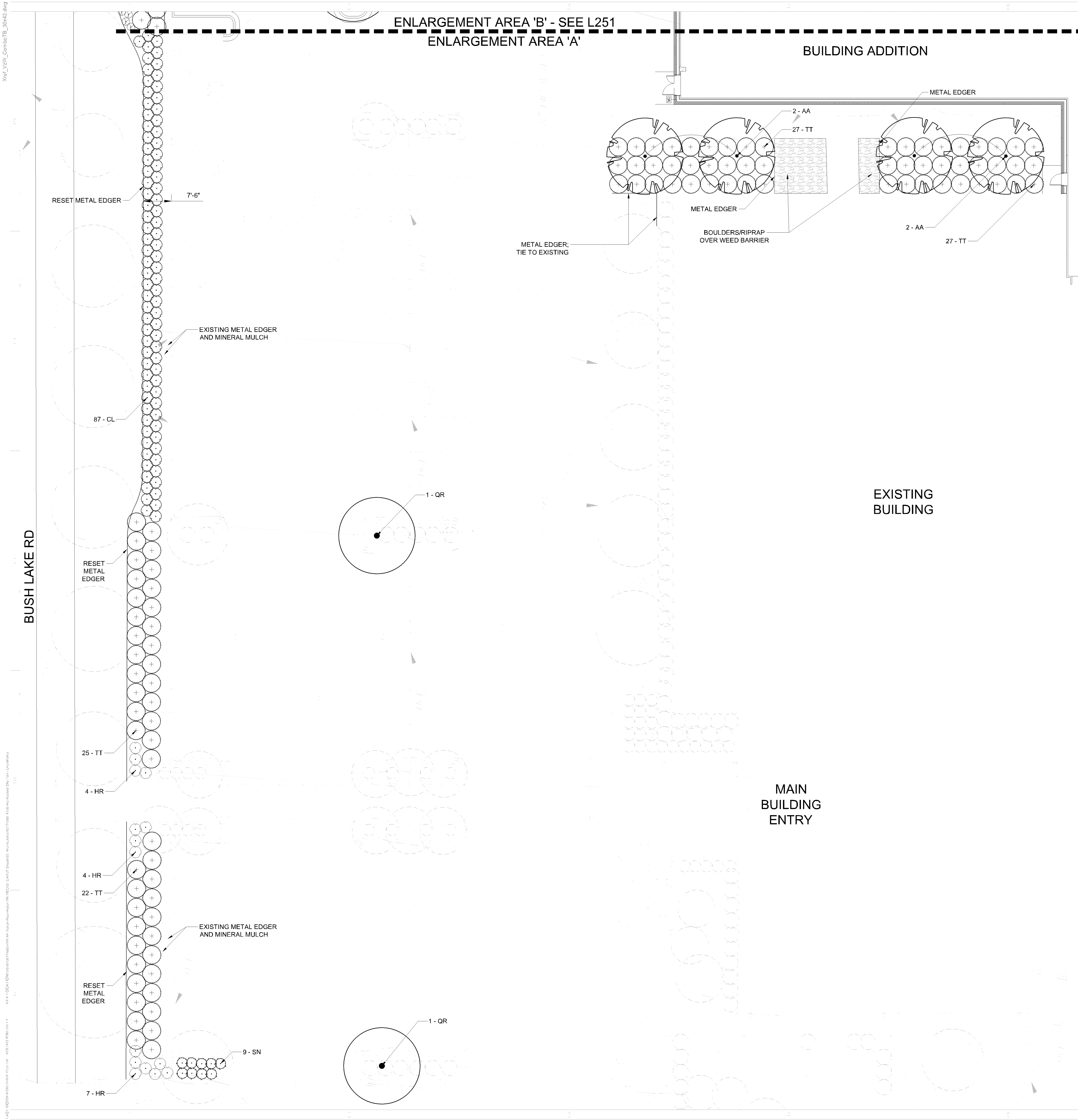
△ BOARD DESCRIPTION	DATE
---------------------	------

NETWORK COMPLIANCE SUBMITTALS	DATE
ISSUED FOR 90% REVIEW	08/21/2020
ISSUED FOR CITY REVIEW	09/02/2020

PROJECT NO:	200174600	STAMP
CAD DWG FILE:		
DESIGNED BY:	MJR	
DRAWN BY:	MJR	
CHECKED BY:	TW	
COPYRIGHT:	APRIL, 2020	

SHEET TITLE  
OVERALL LANDSCAPE  
PLAN

SHEET NUMBER **L150**



NOTE: REFER TO SHEET L006 FOR CITY OF BLOOMINGTON LANDSCAPE REQUIREMENTS AND SITE LANDSCAPE TABULATIONS

PLANTING LEGEND

EXISTING TREE

EXISTING SHRUB

PLANT SCHEDULE - AREA 'A'

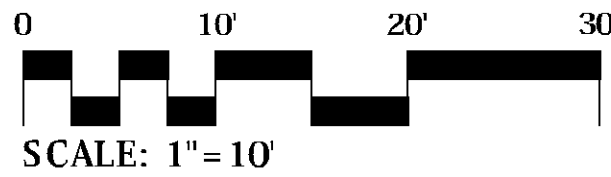
COD E	QT Y	BOTANICAL / COMMON NAME
AA	4	ACER X FREEMANII 'JEFFSRED' TM / AUTUMN BLAZE MAPLE
QR	2	QUERCUS RUBRA / RED OAK
COD E	QT Y	BOTANICAL / COMMON NAME
CL	87	COTONEASTER LUCIDUS / SHINY COTONEASTER
SN	9	SPIRAEA X BUMALDA 'NEON FLASH' / NEON FLASH SPIREA
COD E	QT Y	BOTANICAL / COMMON NAME
TT	101	TAXUS X MEDIA 'TAUNTONII' / TAUNTON'S YEW
COD E	QT Y	BOTANICAL / COMMON NAME
HR	15	HOSTA X 'ROYAL STANDARD' / PLANTAIN LILY

SEE SHEET L500 FOR PLANTING DETAILS

I hereby certify that this document was prepared by me or under my direct supervision and that I am a duly licensed Landscape Architect under the laws of the State of Minnesota.

Name  
Registration#

Signature Date



verizon

THIS SERVICE WAS PROVIDED FOR THE USE OF THE CITY OF BLOOMINGTON, MINNESOTA. IT IS NOT TO BE USED FOR ANY OTHER PURPOSES WITHOUT THE WRITTEN CONSENT OF MORRISON HERSHFIELD MISSION CRITICAL.

**MORRISON HERSHFIELD MISSION CRITICAL**  
1455 LINCOLN PARKWAY, SUITE 500  
ATLANTA, GA 30346  
TEL: 770.379.8500 FAX: 770.379.8501  
WWW.MORRISONHERSHFIELD.COM

DATE: 04/02/2020  
PROJECT: BLOOMINGTON MSC EXPANSION  
DRAWN BY: MJR  
CHECKED BY: TW  
COPYRIGHT: APRIL, 2020

SUBCONSULTANT  
**DF/ DAMON FARBER LANDSCAPE ARCHITECTS**  
310 South 4th Avenue, Suite 7050  
Minneapolis, MN 55415 p: 612.332.7522

NOT FOR CONSTRUCTION

**verizon**  
BLOOMINGTON MSC EXPANSION  
10801 BUSH LAKE ROAD  
BLOOMINGTON, MN.

△ REV DESCRIPTION DATE

NETWORK COMPLIANCE SUBMITTALS DATE  
ISSUED FOR 90% REVIEW 04/21/2020  
ISSUED FOR CITY REVIEW 04/02/2020

PROJECT NO: 20074600  
CAD DWG FILE: MJR  
DESIGNED BY: MJR  
DRAWN BY: MJR  
CHECKED BY: TW  
COPYRIGHT: APRIL, 2020

SHEET TITLE  
ENLARGED PLANTING PLAN 'A'

SHEET NUMBER  
L250



COD E	QT Y	BOTANICAL / COMMON NAME
QR	3	QUERCUS RUBRA / RED OAK
COD E	QT Y	BOTANICAL / COMMON NAME
PD	3	PICEA GLAUCA 'DENSATA' / BLACK HILLS SPRUCE
PI-P	2	PINUS PONDEROSA / PONDEROSA PINE
COD E	QT Y	BOTANICAL / COMMON NAME
SN	35	SPIRAEA X BUMALDA 'NEON FLASH' / NEON FLASH SPIREA
COD E	QT Y	BOTANICAL / COMMON NAME
TF	9	TAXUS CUSPIDATA 'FASTIGIATE' / UPRIGHT JAPANESE YEW
TT	110	TAXUS X MEDIA 'TAUNTONII' / TAUNTON'S YEW
COD E	QT Y	BOTANICAL / COMMON NAME
RG	127	RUDBECKIA FULGIDA SULLIVANTII 'GOLDSTURM' / BLACK-EYED SUSAN

COD E	QT Y	BOTANICAL / COMMON NAME
TF	15	TAXUS CUSPIDATA 'FASTIGIATE' / UPRIGHT JAPANESE YEW
TT	41	TAXUS X MEDIA 'TAUNTONII' / TAUNTON'S YEW



**BLOOMINGTON MSC EXPANSION**  
10801 BUSH LAKE ROAD  
BLOOMINGTON, MN.

SHEET NUMBER **L251**

Xref\_V001\_ConcreteTB\_30x42.dwg

1/1

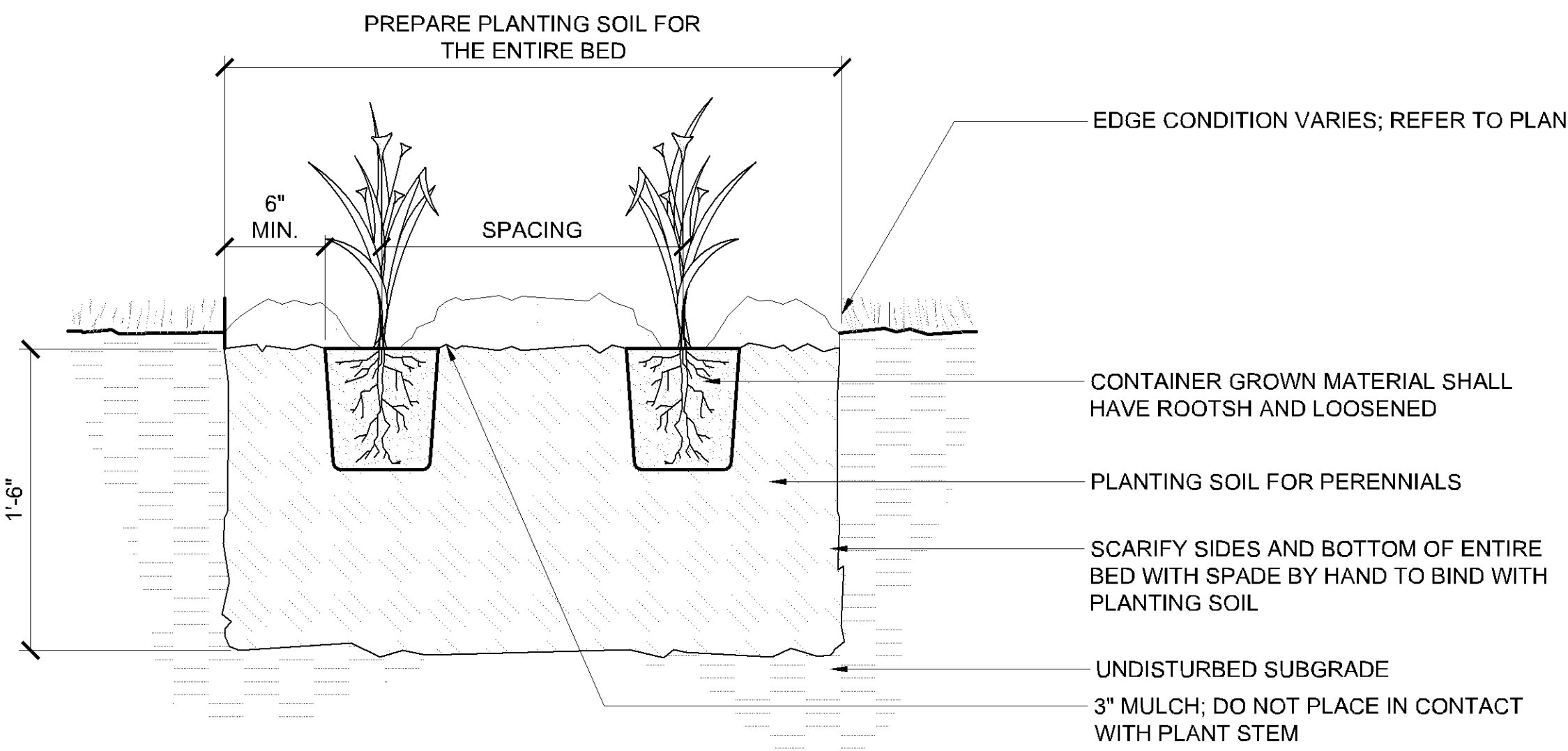
1/1

1/1

1/1

1/1

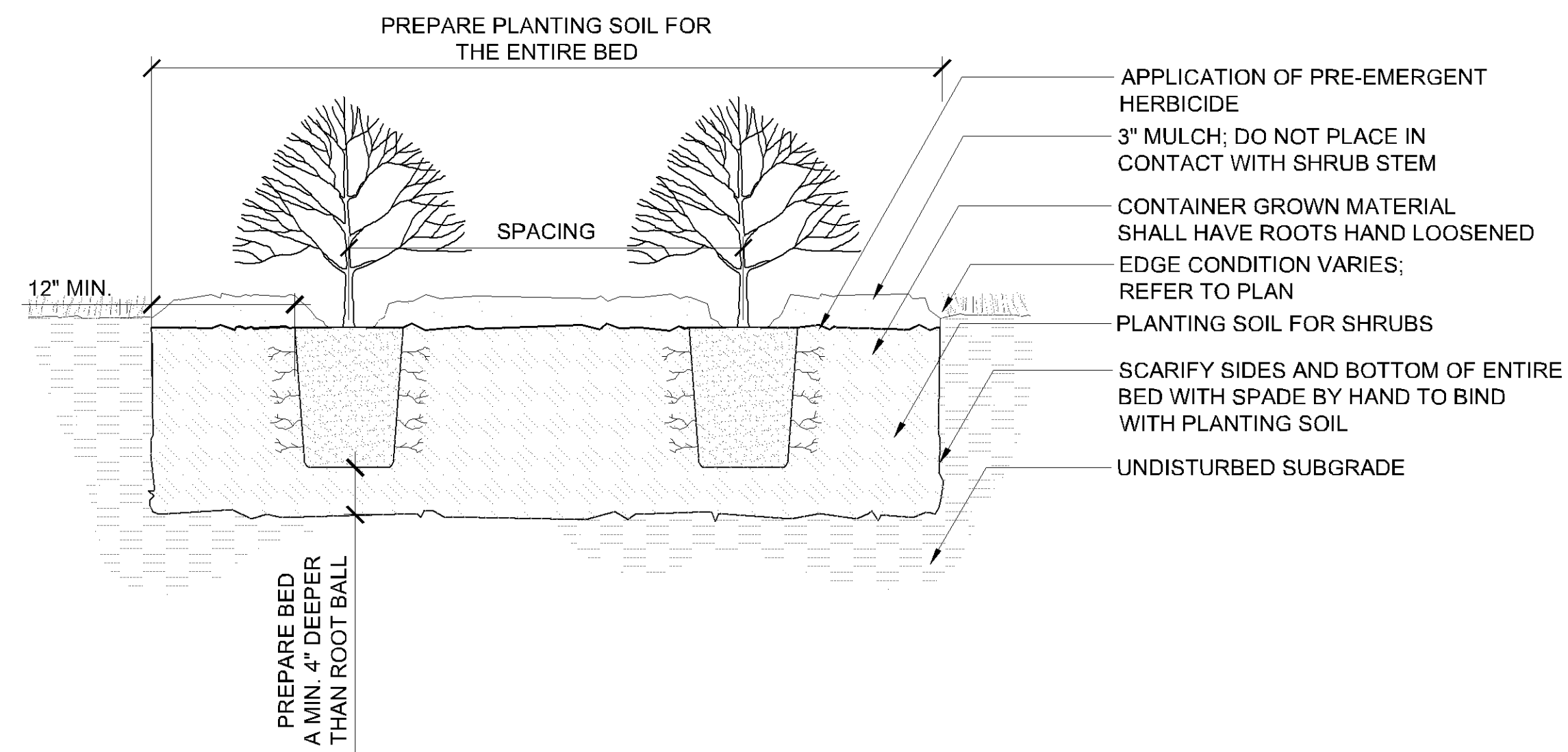
1/1



3 DETAIL - PERENNIAL PLANTING

1 1/2" = 1'-0"

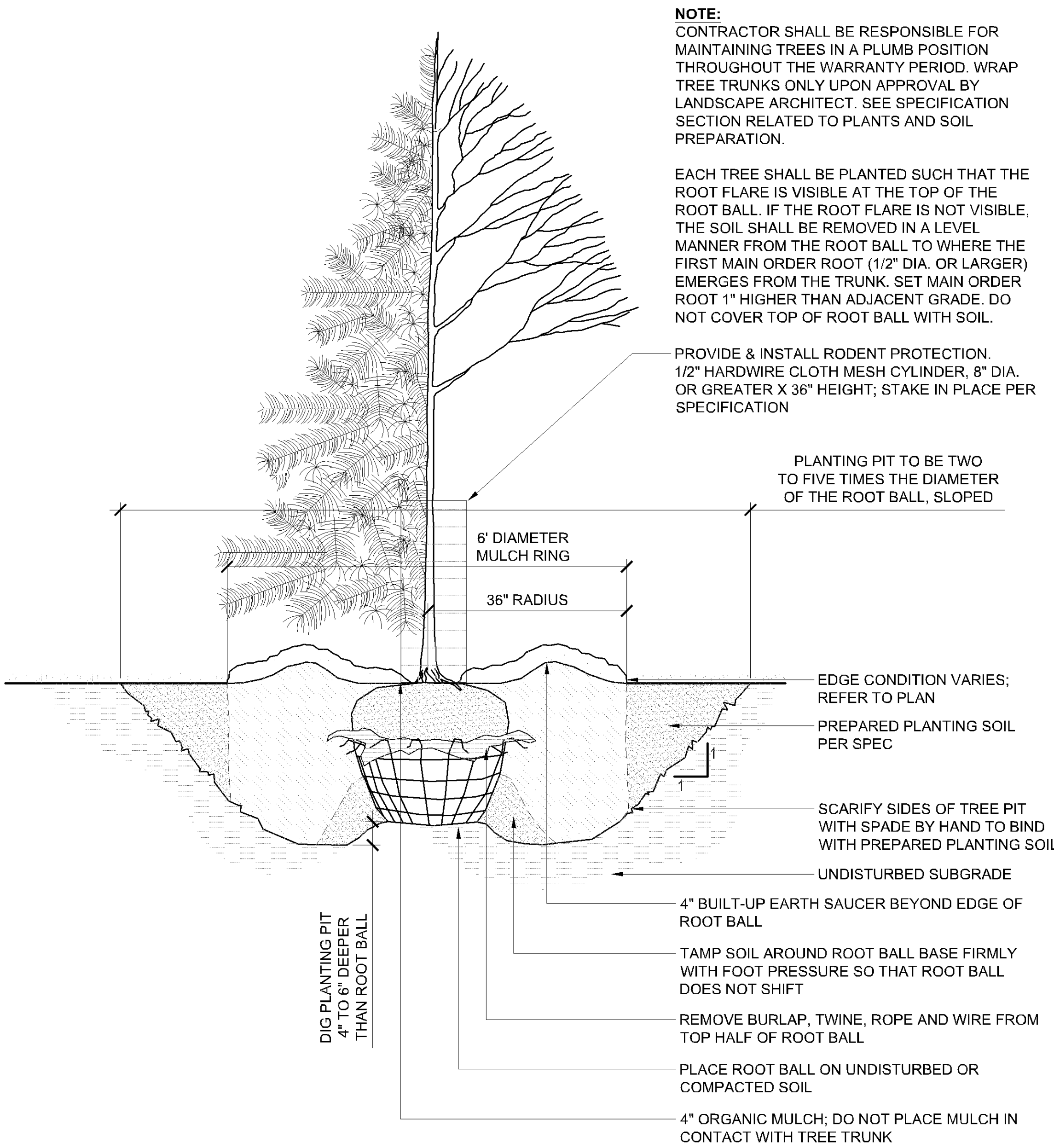
P-20 122-04



2 DETAIL - SHRUB PLANTING

1" = 1'-0"

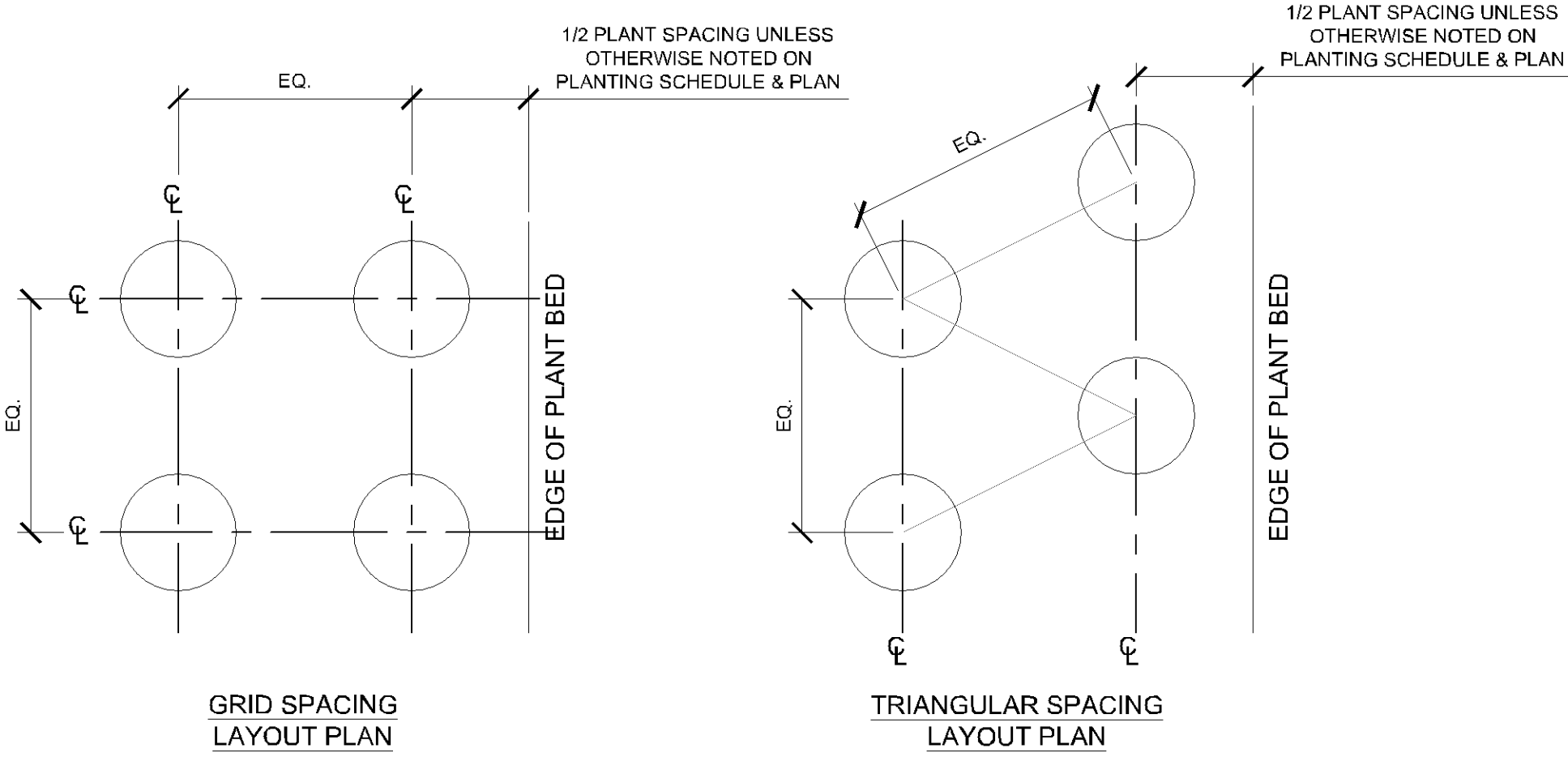
P-20 122-02



I hereby certify that this document was prepared by me or under my direct supervision and that I am a duly licensed Landscape Architect under the laws of the State of Minnesota.

Name  
Registration#

Signature Date



NOTE: REFER TO PLANTING SCHEDULE PLANT SPACING.

4 DETAIL - PLANT SPACING

3/4" = 1'-0"

P-20 122-03

1 DETAIL - TREE PLANTING

3/4" = 1'-0"

P-20 122-01

verizon

THIS STATEMENT AND OTHER INFORMATION ARE FOR INFORMATIONAL PURPOSES ONLY AND DO NOT CONSTITUTE AN OFFER OF ANY FINANCIAL PRODUCT OR SERVICE. VERIZON AND OTHER INFORMATION ARE FOR INFORMATIONAL PURPOSES ONLY AND DO NOT CONSTITUTE AN OFFER OF ANY FINANCIAL PRODUCT OR SERVICE.

**MORRISON HERSHFELD**  
**MISSION CRITICAL**  
1455 LINCOLN PARKWAY, SUITE 500  
ATLANTA, GA 30346  
TEL: 770.379.8500 FAX: 770.379.8501  
WWW.MORRISONHERSHFIELD.COM

DO NOT ADD, CHANGE, OR REMOVE ANY INFORMATION FROM THIS DOCUMENT WITHOUT THE WRITTEN APPROVAL OF MORRISON HERSHFELD. ANY CHANGES TO THIS DOCUMENT SHALL BE MADE BY MORRISON HERSHFELD. ANY CHANGES TO THIS DOCUMENT SHALL BE MADE BY MORRISON HERSHFELD.

SUBCONSULTANT

**DF/ DAMON FARBER**  
**LANDSCAPE ARCHITECTS**  
310 South 4th Avenue, Suite 7050  
Minneapolis, MN 55415 p: 612.332.7522

NOT FOR  
CONSTRUCTION

verizon  
BLOOMINGTON MSC EXPANSION  
10801 BUSH LAKE ROAD  
BLOOMINGTON, MN.

REV DESCRIPTION DATE

NETWORK COMPLIANCE SUBMITTALS  
ISSUED FOR 90% REVIEW 10/21/2020  
ISSUED FOR CITY REVIEW 09/02/2020

PROJECT NO: 20074600  
CAD DWG FILE:  
DESIGNED BY: MJR  
DRAWN BY: MJR  
CHECKED BY: TW  
COPYRIGHT: APRIL, 2020

SHEET TITLE  
LANDSCAPE  
DETAILS

SHEET NUMBER  
L500