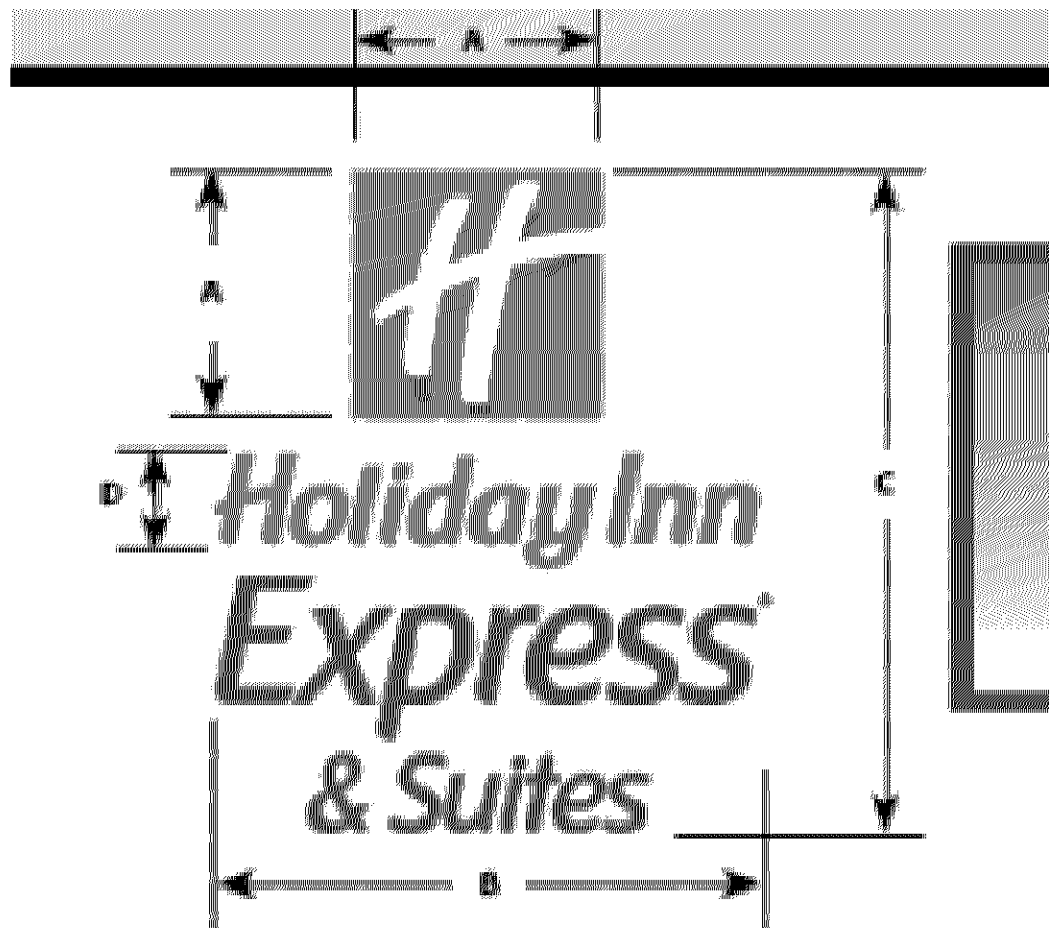
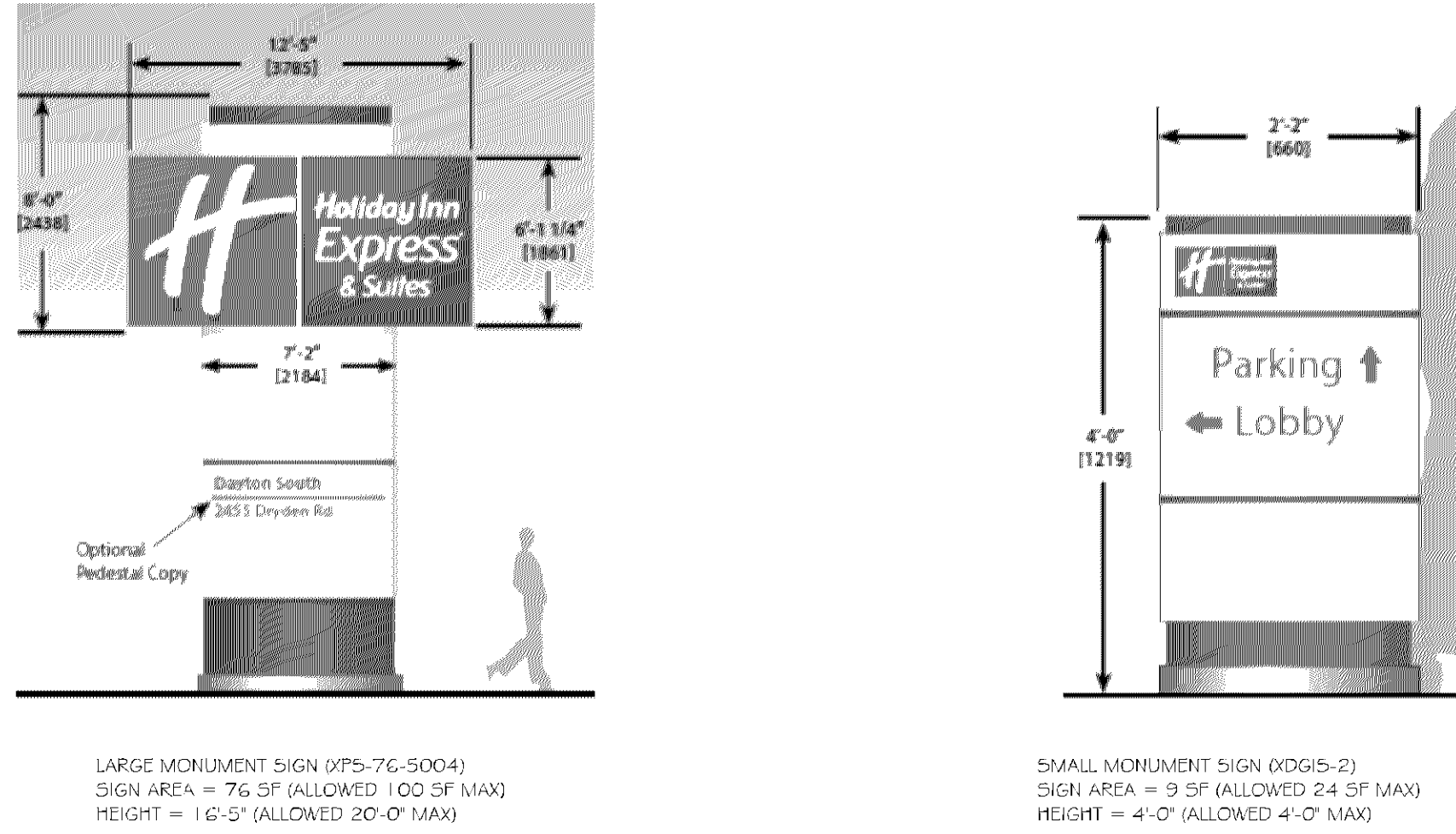


**1 SITE PLAN**  
SCALE: 1" = 20'-0"  
Would like to see a bar scale to double check scale.



Wall signage areas appear to be within City Code allotments. All hotels require a Uniform Sign Design (USD) to be created, which will identify all free standing and wall signage. The USD is a staff-level review.



CITIES EDGE ARCHITECTS

103 Fifteenth Ave NW, Willmar, MN 56201

Phone: 320 235 7775 Fax: 320 235 8673

www.CitiesEdgeArchitects.com

©2016 CITIES EDGE ARCHITECTS, A DIVISION OF CITIES EDGE, LLC

Certification & Seal:

Revision

Date

DATE:

2017-03-15

DESIGN:

ISSUE:

PHASE:

CITY REVIEW

PROJECT TITLE:

HOLIDAY INN EXPRESS & SUITES

PROJECT OWNER:

HAWKEYE HOTELS

PROJECT LOCATION:

BLOOMINGTON, MN

SHEET TITLE:

ARCHITECTURAL SITE PLAN

PROJECT NUMBER:

33476

SHEET NUMBER:

AOO 1

This document contains confidential or proprietary information of Cities Edge, LLC. Whether this document, or any information herein is to be reproduced, distributed, used or disclosed either in whole or in part, must be authorized by Cities Edge, LLC.

Bloomington, MN

stamp

I hereby certify that this plan was prepared by me or under my direct supervision and that I am a duly registered landscape architect in the State of Minnesota.

signature/ G. H. Tan 31/4/2017  
date

GARRETT A. TEWS	48408
name	reg. no

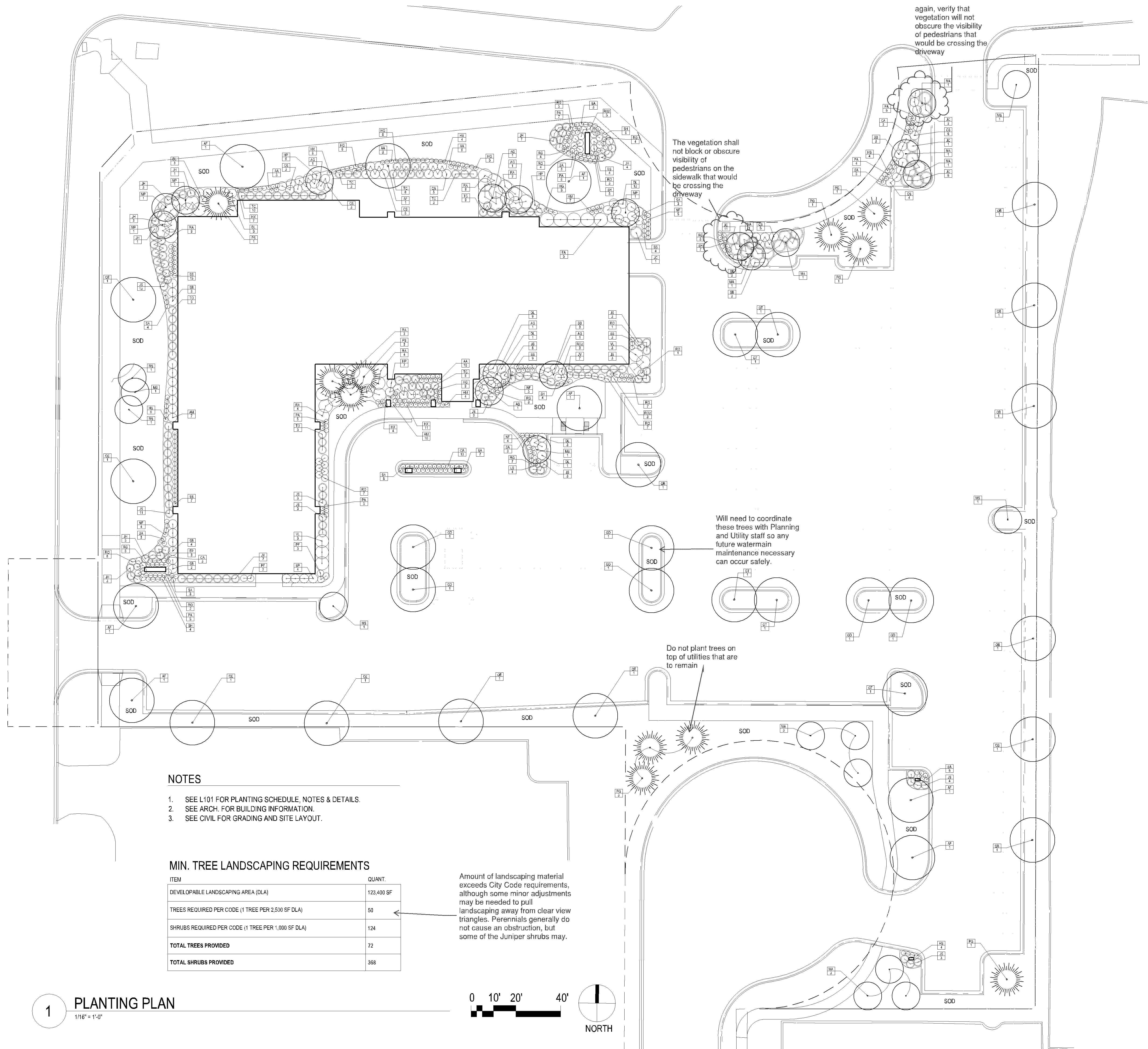
[illegible]

Title	Author(s)	Year	Journal	Volume	Page(s)
...	...	...	...	...	...

LANDSCAPE PLAN

sheet number

L 100



## NOTES

1. SEE L101 FOR PLANTING SCHEDULE, NOTES & DETAILS
2. SEE ARCH. FOR BUILDING INFORMATION.
3. SEE CIVIL FOR GRADING AND SITE LAYOUT.

## MIN. TREE LANDSCAPING REQUIREMENTS

ITEM	QUANT.
DEVELOPABLE LANDSCAPING AREA (DLA)	123,400 SF
TREES REQUIRED PER CODE (1 TREE PER 2,500 SF DLA)	50
SHRUBS REQUIRED PER CODE (1 TREE PER 1,000 SF DLA)	124
<b>TOTAL TREES PROVIDED</b>	72
<b>TOTAL SHRUBS PROVIDED</b>	368

Amount of landscaping material exceeds City Code requirements, although some minor adjustments may be needed to pull landscaping away from clear view triangles. Perennials generally do not cause an obstruction, but some of the Juniper shrubs may.

1

## PLANTING PLAN

$$1/16'' = 1'-0''$$

0    10'   20'                    40'



NORTH

1. IRRIGATION PLAN TO BE PROVIDED BY IRRIGATION CONTRACTOR AND SUBMITTED FOR APPROVAL BY LANDSCAPE ARCHITECT. IRRIGATION PLAN SHALL INCLUDE RAIN SENSORS PER CITY REQUIREMENTS.
2. ALL PROPOSED PLANTS SHALL BE STAKED AS SHOWN ON THE DRAWINGS AND/OR AS DIRECTED IN THE FIELD BY THE LANDSCAPE ARCHITECT. THE LANDSCAPE ARCHITECT MUST APPROVE ALL STAKING LOCATIONS OF PLANT MATERIALS PRIOR TO ANY DIGGING. LANDSCAPE ARCHITECT SHALL BE NOTIFIED AT LEAST 48 HOURS IN ADVANCE OF THE DELIVERY DATE FOR ALL PLANT MATERIALS.
3. EXISTING TREES INDICATED ON PLAN TO REMAIN. PROTECT FROM DAMAGE DURING CONSTRUCTION. ALL TREES OUTSIDE OF WORK LIMIT TO REMAIN UNLESS DAMAGED OR DISEASED. NOTIFY LANDSCAPE ARCHITECT OF ANY ADDITIONAL TREES REQUIRING REMOVAL. SEE ARCH. FOR LANDSCAPE DEMO AND TREE REMOVAL.
4. ALL DISTURBED AREAS SHALL BE RESTORED TO TURF UNLESS OTHERWISE SPECIFIED.
5. ALL PLANT MATERIAL SHALL BE WARRANTED BY THE CONTRACTOR FOR A PERIOD OF ONE YEAR AFTER THE OWNER'S WRITTEN ACCEPTANCE. ANY ACTS OF VANDALISM OR DAMAGE WHICH MAY OCCUR PRIOR TO THE OWNER'S WRITTEN ACCEPTANCE SHALL BE THE RESPONSIBILITY OF THE CONTRACTOR.
6. LANDSCAPE ARCHITECT MUST APPROVE THE DECOMPACTED SUBGRADE AFTER DECOMPACTION WORK IS COMPLETE AND PRIOR TO TOPSOIL PLACEMENT.
7. SEE CIVIL FOR EARTHWORK REQUIREMENTS. PROVIDE A MINIMUM OF 12 INCHES OF PLANTING SOIL MIX CONSISTING OF 1/3 TOPSOIL, 1/3 SAND, AND 1/3 ORGANIC COMPOST IN ALL SHRUB AND PERENNIAL BEDS. WHERE SHRUBS OR PERENNIALS ARE GROUPED, CREATE ONE CONTINUOUS PLANTING BED. LANDSCAPE ARCHITECT MUST APPROVE SOIL MIXTURE PRIOR TO SPREADING. CONTRACTOR MUST SUBMIT TESTING RESULTS AND FERTILIZER RECOMMENDATIONS FOR REVIEW PRIOR TO APPROVAL. SEE PLANTING DETAILS.
8. ALL EDGED SHRUB PLANTING BEDS TO RECEIVE UNCOLORED 3 INCH DEPTH OF SHREDDED HARDWOOD BARK MULCH. LANDSCAPE ARCHITECT TO APPROVE MULCH PRIOR TO INSTALLATION.
9. ALL PLANTING BEDS NOT CONTAINED BY STRUCTURES, CURB, OR PAVING MUST BE EDGED WITH METAL LANDSCAPE EDGING. PERMALOC 'CLEANLINE' 4" X 3/16", MILL FINISH, OR APPROVED EQUAL.
10. WHERE SOD ABUTS PAVED SURFACES, FINISHED GRADE OF SOD MUST BE HELD 1 INCH BELOW THE SURFACE ELEVATION OF THE PAVED SURFACE.
11. SOD SHALL BE LAID PARALLEL TO THE CONTOURS AND SHALL HAVE STAGGERED JOINTS.
12. ADJUSTMENT IN LOCATION OF PROPOSED PLANT MATERIAL MAY BE NEEDED IN THE FIELD. SHOULD AN ADJUSTMENT BE ADVISED, THE LANDSCAPE ARCHITECT MUST BE NOTIFIED FOR APPROVAL PRIOR TO ADJUSTMENT.
13. ALL PLANT MATERIAL SHALL BE CLEARLY IDENTIFIED (COMMON OR LATIN NOMENCLATURE) WITH A PLASTIC TAG PROVIDED BY NURSERY OR PLANT SOURCE WHICH SHALL NOT BE REMOVED PRIOR TO THE LANDSCAPE ARCHITECT'S APPROVAL.
14. ALL PLANT MATERIAL SHALL BE FERTILIZED UPON INSTALLATION WITH DRIED BONE MEAL OR OTHER FERTILIZER AS INDICATED MIXED IN WITH THE PLANTING SOIL PER MANUFACTURER'S INSTRUCTIONS.
15. ALL PLANT MATERIALS ARE TO BE INSTALLED PER PLANTING DETAILS.
16. WRAP ALL DECIDUOUS TREES FROM THE GROUND TO THE FIRST BRANCH FOR WINTER. WRAPPING MATERIAL SHALL BE QUALITY, HEAVY WATERPROOF CREPE PAPER MANUFACTURED EXPRESSLY FOR THIS PURPOSE. WRAP ALL DECIDUOUS TREES PLANTED IN THE FALL PRIOR TO DECEMBER 1ST, AND REMOVE ALL WRAPPING BETWEEN MAY 1ST AND JUNE 1ST, OR AS INSTRUCTED BY THE LANDSCAPE ARCHITECT.
17. IF THE LANDSCAPE CONTRACTOR PERCEIVES ANY DEFICIENCIES IN THE PLANT SELECTIONS, SOIL CONDITIONS, OR ANY OTHER SITE CONDITIONS WHICH MIGHT NEGATIVELY AFFECT PLANT MATERIAL ESTABLISHMENT, SURVIVAL, OR GUARANTEE, THE LANDSCAPE CONTRACTOR SHALL BRING THESE DEFICIENCIES TO THE ATTENTION OF THE LANDSCAPE ARCHITECT.
18. ALL SINGLE STEM TREES SHALL BE STOCK THAT WAS GROWN EXPRESSLY AS SUCH. MULTIPLE STEM STOCK WITH STEMS REMOVED WILL NOT BE ACCEPTED.
19. NO PLANT MATERIAL SUBSTITUTIONS WILL BE ACCEPTED UNLESS APPROVAL IS REQUESTED OF THE LANDSCAPE ARCHITECT BY THE LANDSCAPE CONTRACTOR PRIOR TO SUBMISSION OF A BID AND/OR QUOTATION.
20. CONTRACTOR SHALL PROVIDE A WRITTEN REQUEST FOR THE OWNER ACCEPTANCE INSPECTION UPON COMPLETION OF ALL PLANTING WORK.

\_\_\_\_\_

CONTRACTOR TO LOCATE AND SET IN THE ROOT FLARE OF EACH TREE PRIOR TO PLACING TREE IN PLANTING PIT. (THE FLARE IS WHERE THE FIRST HORIZONTAL ROOT COMES OUT FROM THE TREE). THE PLANTING DEPTH OF EACH TREE WILL BE INSPECTED. ANY TREE PLANTED TOO DEEPLY OR WITH FLARE BURIED WILL BE REJECTED.


REMOVE SOIL FROM TOP OF ROOTBALL TO EXPOSE TOP OF FLARE (SOMETIMES AS MUCH AS HALF THE ROOTBALL).

SET TREE IN PIT SO THAT FLARE IS ONE-TWO INCHES ABOVE SURROUNDING GRADE.

IN ALL AREAS WITH HEAVY CLAY OR POORLY DRAINED SOILS (MOTTLED), CONTACT LANDSCAPE ARCHITECT TO POSSIBLY RELOCATE TREE OR TO CONFIRM ELEVATED ROOTBALL IN HEAVY SOILS. THE CONTRACTOR SHALL SET THE FLARE OF THE TREE 2'-3" ABOVE GRADE.

REMOVE SOIL FROM TOP OF ROOTBALL TO EXPOSE TOP OF FLARE (SOMETIMES AS MUCH AS HALF THE ROOTBALL).  
SET TREE IN PIT SO THAT FLARE IS ONE-TWO INCHES ABOVE SURROUNDING GRADE.

IN ALL AREAS WITH HEAVY CLAY OR POORLY DRAINED SOILS (MOTTUNG), CONTACT LANDSCAPE ARCHITECT TO POSSIBLY RELOCATE TREE OR TO CONFIRM ELEVATED ROOTBALL. IN HEAVY SOILS, THE CONTRACTOR SHALL SET THE FLARE OF THE TREE 2'-3" ABOVE GRADE.



AFTER INSTALLATION, TRIM OUT DEADWOOD AND/OR DEFORMED TWIGS. DO NOT CUT LEADER.

SHREDDED HARDWOOD 3" DIAMETER AROUND

4" MIN.

FLARE, SEE NOTE

CUT AND REMOVE TO AND/OR BURLAP.

OF TOP OF ROOTBALL

UNDISTURBED SOIL OR  
COMPACTED SUBGRADE

IF SOIL IN ROOT BALL  
TO EXCESSIVE HANDLING  
TREE

STAVING-

GUY ASSEMBLY: 1/8" POLYPROPYLENE OR POLYETHYLENE (40 MIL) 1-1/2"  
 WIDE STRIP (TYP.) DOUBLE STRAND 14 GA WIRE & 3 STEEL STAKES OR SIGN  
 POSTS @ 120 DEG. O.C. (SEE STAKING DIAGRAM). GUY ASSEMBLY OPTIONAL

STAIN 2 DIAGRAM

AND STAKES.

---

Tag	Qty	Common Name	Botanical Name	Size	Notes
TREES					
AF	8	SIENNA GLEN MAPLE	ACER X FREMANII 'SIENNA GLEN'	3" B+B	STRAIGHT LEADER
AG	6	AUTUMN BRILLIANCE SERVICEBERRY	AMELANCHIER X GRANDIFLORA 'AUTUMN BRILLIANCE'	6" B+B	CLUMP FORM
GD	6	ESPRESSO KENTUCKY COFFEETREE	GYMNOCLADUS DIOICUS 'ESPRESSO-JFS'	3" B+B	STRAIGHT LEADER
GT	5	SKYLINE HONEYLOCUST	GLEDITSIA TRIACANTHOS VAR. INERMIS 'SKYCOLE'	3" B+B	STRAIGHT LEADER
MA	12	ADAMS CRABAPPLE	MALUS 'ADAMS'	2" BB	--
MP	4	PINK SPIRES CRABAPPLE	MALUS 'PINK SPIRES'	2" BB	--
MS	7	SPRING SNOW CRABAPPLE	MALUS 'SPRING SNOW'	6" B+B	CLUMP FORM
PG	7	BLACK HILLS SPRUCE	PICEA GLAUCA DENSATA	8" B+B	--
PS	4	PRAIRIE STATESMAN SWISS STONE PINE	PINUS CEMBRA 'HERMAN'	8" B+B	--
QB	7	SWAMP WHITE OAK	QUERCUS BICOLOR	3" B+B	STRAIGHT LEADER
QE	6	NORTHERN PIN OAK	QUERCUS ELLIPSOIDALIS	3" BB	STRAIGHT LEADER
SHRUBS					
AM	7	IROQUOIS BEAUTY CHOKEBERRY	ARONIA MELANOCARPA 'MORTON'	5 GAL	--
CS	31	ARCTIC FIRE DOGWOOD	CORNUS SERICEA 'FARROW'	5 GAL	--
DL	32	KODIAK RED BUSH HONEYSUCKLE	DIERVILLA 'G2X885411'	5 GAL	--
EA	5	DWARF BURNING BUSH	EUONYMUS ALATUS 'COMPACTUS'	10 GAL	--
HP	15	BOMBSHELL HYDRANGEA	HYDRANGEA PANICULATA 'BOMBSHELL'	3 GAL	--
JC	21	JUNIPER 'SEA GREEN'	JUNIPERUS CHINENSIS 'SEA GREEN'	5 GAL	--
JH	27	LIMEGLOW JUNIPER	JUNIPERUS HORIZONTALIS 'LIMEGLOW'	5 GAL	--
JS	70	JUNIPER 'ARCADIA'	JUNIPERUS SABINA 'ARCADIA'	5 GAL	--
JV	14	SKYROCKET JUNIPER	JUNIPERUS VIRGINIANA 'SKY ROCKET'	6" B+B	--
PF	5	ABBOTSWOOD POTENTILLA	POTENTILLA FRUTICOSA 'ABBOTSWOOD'	5 GAL	--
RA	32	GRO-LOW SUMAC	RHUS AROMATICA 'GRO-LOW'	5 GAL	--
RO	31	CAREFREE DELIGHT ROSE	ROSA 'CAREFREE DELIGHT'	5 GAL	--
RO2	13	SNOW PAVEMENT ROSE	ROSA 'SNOW PAVEMENT'	5 GAL	--
SB	19	GOLDFLAME SPIREA	SPIRAEA X BUMALDA 'GOLDFLAME'	5 GAL	--
SP	5	DWARF BLUE LEAF ARCTIC WILLOW	SALIX PURPUREA 'NANA'	5 GAL	--
TC	42	DWARF BRIGHT GOLD YEW	TAXUS CUSPIDATA 'DWARF BRIGHT GOLD'	5 GAL	--
TO	9	MR. BOWLING BALL ARBORVITAE	THUJA OCCIDENTALIS 'BOBAZAM'	5 GAL	--
VT	6	MOHICAN VIBURNUM	VIBURNUM LANTANA 'MOHICAN'	5 GAL	--
PERENNIALS					
AA	24	WHITE GLORIA ASTILBE	ASTILBE ARENDsii 'WHITE GLORIA'	1 GAL	--
CA	19	KARL FOERSTER FEATHER REED GRASS	CALAMAGROSTIS ACUTIFLORA 'KARL FOERSTER'	1 GAL	--
EP	6	POWWOW WILD BERRY CONEFLOWER	ECHINACEA PURPUREA 'POWWOW WILD BERRY'	1 GAL	--
HG	31	GUACAMOLE HOSTA	HOSTA 'GUACAMOLE'	1 GAL	--
HS	14	STELLA SUPREME DAYLILY	HEMEROCALLIS 'STELLA SUPREME'	1 GAL	--
HX	32	CARAMEL HEUCHERA	HEUCHERA X VILLOSA 'CARAMEL'	1 GAL	--
HM	21	GOLDEN JAPANESE FOREST GRASS	HAKONECHLOA MACRA 'AUREOLA'	1 GAL	--
LS	8	LIATRIS, FLORISTAN VIOLETT	LIATRIS SPICATA 'FLORISTAN VIOLETT'	1 GAL	--
NF	18	WALKER'S LOW CATMINT	NEPETA FAASSENII 'WALKER'S LOW'	1 GAL	--
PA	38	LITTLE SPIRE RUSSIAN SAGE	PEROVSKIA ATRIPLICIFOLIA 'LITTLE SPIRE'	1 GAL	--
RG	40	GOLDSTURM RUDBECKIA	RUDBECKIA 'GOLDSTURM'	1 GAL	--
SA	48	AUTUMN FIRE SEDUM	SEDUM X 'AUTUMN FIRE'	1 GAL	--
SS	38	LITTLE BLUESTEM 'BLUE HEAVEN'	SCHYZACHYRIUM SCOPARIUM 'MINNBLUE A'	1 GAL	--
SH	26	PRAIRIE DROPSEED	SPOROBOLUS HETEROLEPIS	1 GAL	--

3101 East Franklin Avenue | Minneapolis, MN 55406  
www.colbergtews.com

Bloomington, MN

stamp

I hereby certify that this plan was prepared by me or under my direct supervision and that I am a duly registered landscape architect in the State of Minnesota.

signature/ G. H. T. date 31/4/2017

GARRETT A. TEWS	48408
name	reg. no.

description	date
-------------	------








---

### PLANTING SCHEDULE, NOTES & DETAILS

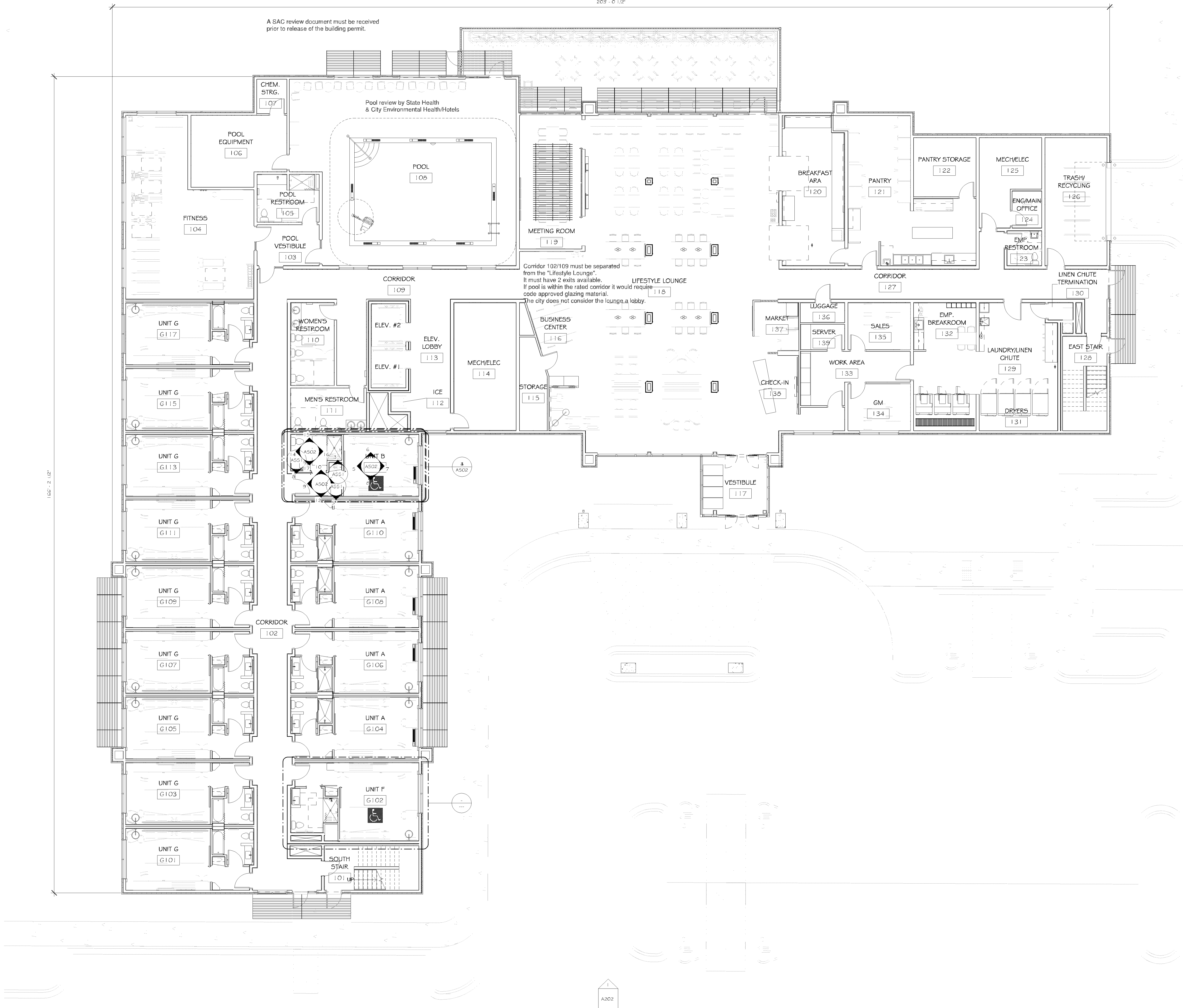
sheet number

101

**E 191**

---





**1 FIRST FLOOR**  
SCALE: 1/8" = 1'-0"



NOTE:  
- ROOMS FOR HEARING IMPAIRED TO BE PROVIDED WITH VISIBLE & AUDIBLE ALARM PER THE ELECTRICAL DESIGN DRAWINGS. DEVICES SHALL BE ACTIVATED BY BOTH THE IN-ROOM SMOKE DETECTOR AND THE BUILDING FIRE PROTECTION SYSTEM.  
- SEE ROOM FINISH SCHEDULE FOR SHELVING REQUIREMENTS.

ELEVATOR SCHEDULE				
LOCATION	MFG	CAPACITY	SPEED	USAGE
ELEV #1	SCHINDLER	2500M	150	GENERAL
ELEV #2	SCHINDLER	2500M	150	GENERAL

ROOM MATRIX							
ROOM TYPE/ROOM NAME	1ST	2ND	3RD	4TH	5TH	TOTAL UNITS	PERCENTAGES
UNIT A - KING (SHOWER)	4	10	10	10	10	44	25.6%
UNIT B - ADA KING (ROLL-IN SHOWER)	1	0	0	0	0	1	0.6%
UNIT C - KING SUITE (TUB)	0	2	2	2	3	9	5.3%
UNIT D - ADA KING SUITE (TUB)	0	1	1	1	0	3	1.8%
UNIT E - KING WIDE BAY (SHOWER)	0	2	2	2	2	8	4.7%
UNIT F - ADA KING WIDE BAY (ROLL-IN SHOWER)	1	0	0	0	0	1	0.6%
UNIT G - QUEEN/QUEEN (TUB)	9	20	20	20	20	89	52%
UNIT H - ADA QUEEN/QUEEN (TUB)	0	1	1	1	0	3	1.8%
UNIT I - QUEEN/QUEEN SUITE (TUB)	0	3	3	3	4	13	7.6%
UNIT TOTALS	15	39	39	39	39	171	100%

SEE OVERALL FLOOR PLANS FOR LOCATION OF ADA TUB UNITS (6 TOTAL UNITS)  
SEE OVERALL FLOOR PLANS FOR LOCATION OF ADA ROLL-IN SHOWER UNITS (2 TOTAL UNITS)  
SEE OVERALL FLOOR PLANS FOR LOCATION OF HEARING IMPAIRED/VISUAL UNITS (14 TOTAL UNITS)

Certification & Seal:

Revision	Date
DATE:	2017-03-15
DESIGN:	
PHASE:	CITY REVIEW

PROJECT TITLE:  
**HOLIDAY INN EXPRESS & SUITES**

**5 STORIES**  
**171 UNITS**

PROJECT OWNER:  
**HAWKEYE HOTELS**

PROJECT LOCATION:  
**BLOOMINGTON, MN**

SHEET TITLE:  
**FIRST FLOOR PLAN**

PROJECT NUMBER: **33476**  
SHEET NUMBER: **A101**

Certification & Seal:

Revision	Date
DATE: 2017-03-15	
ISSUED	
PHASE	CITY REVIEW
PROJECT TITLE: <b>HOLIDAY INN EXPRESS</b>	
<b>5 STORIES</b> <b>171 UNITS</b>	
PROJECT OWNER: <b>HAWKEYE HOTELS</b>	
PROJECT LOCATION: <b>BLOOMINGTON, MN</b>	
SHEET TITLE: <b>SECOND - FOURTH FLOOR PLAN</b>	
PROJECT NUMBER	33476
SHEET NUMBER	A102

This document contains confidential or proprietary information of Cities Edge, LLC. Whether this document, or any information herein is to be reproduced, distributed, used or disclosed either in whole or in part without the express written consent of Cities Edge, LLC.

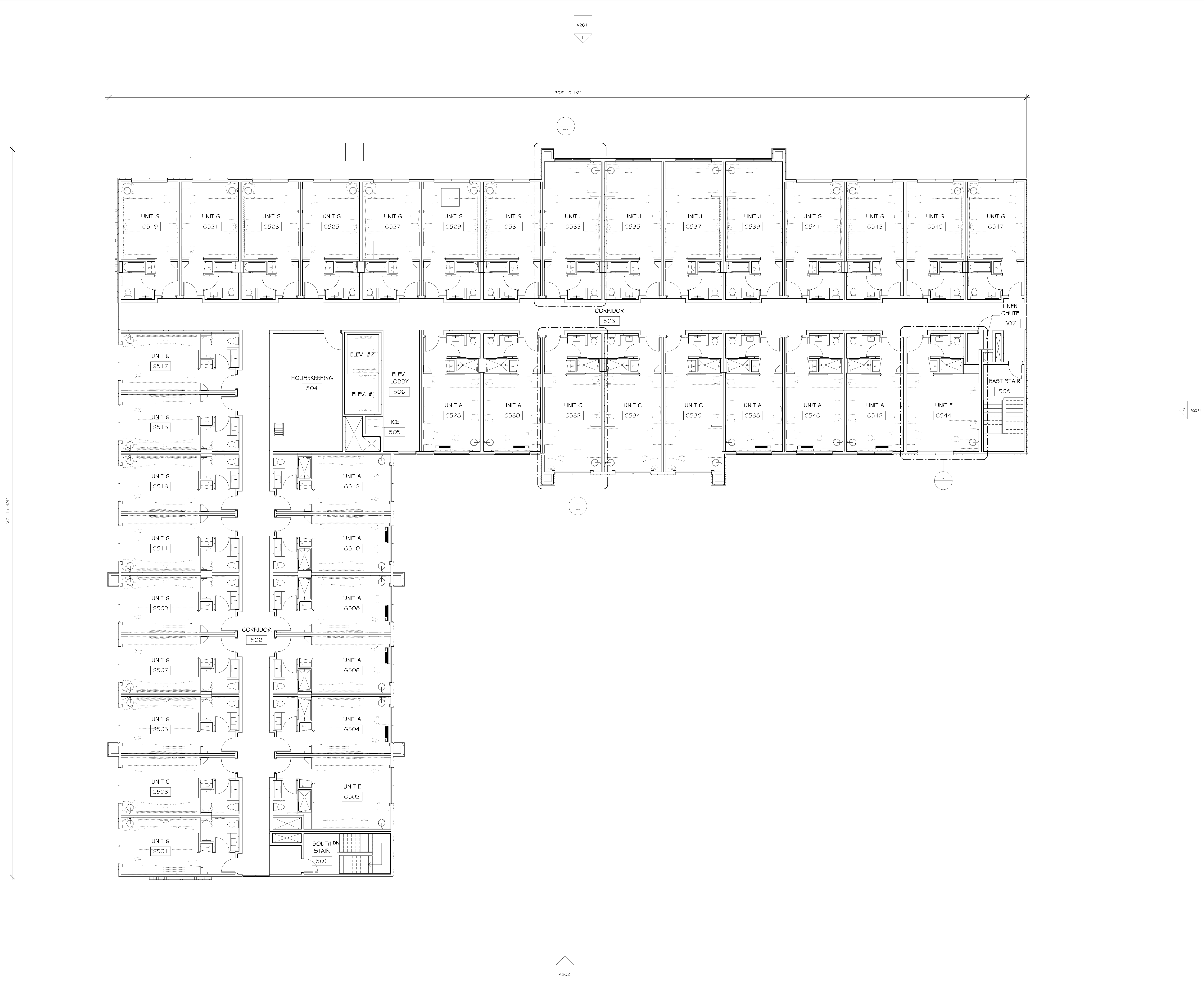


1 SECOND FLOOR (THIRD AND FOURTH - SIMILAR)  
SCALE: 1/8" = 1'-0"

2 THIRD FLOOR PLAN  
SCALE: 1/8" = 1'-0"

3 FOURTH FLOOR PLAN  
SCALE: 1/8" = 1'-0"

1 FIFTH FLOOR  
SCALE: 1/8" = 1'-0"



Certification & Seal:

Revision	Date
DATE:	2017-03-15
ISSUED	
PHASE	CITY REVIEW

PROJECT TITLE:  
**HOLIDAY INN  
EXPRESS**  
  
**5 STORIES  
171 UNITS**

PROJECT OWNER:  
**HAWKEYE HOTELS**

PROJECT LOCATION:  
**BLOOMINGTON, MN**

SHEET TITLE:  
**FIFTH FLOOR PLAN**

PROJECT  
NUMBER  
33476  
SHEET  
NUMBER  
A103





1 NORTH EXTERIOR ELEVATION  
SCALE: 1/8" = 1'-0"



2 EAST EXTERIOR ELEVATION  
SCALE: 1/8" = 1'-0"

Certification & Seal:

Revision	Date
DATE:	2017-03-15
ISSUED	
PHASE	CITY REVIEW

PROJECT TITLE:  
**HOLIDAY INN  
EXPRESS & SUITES**

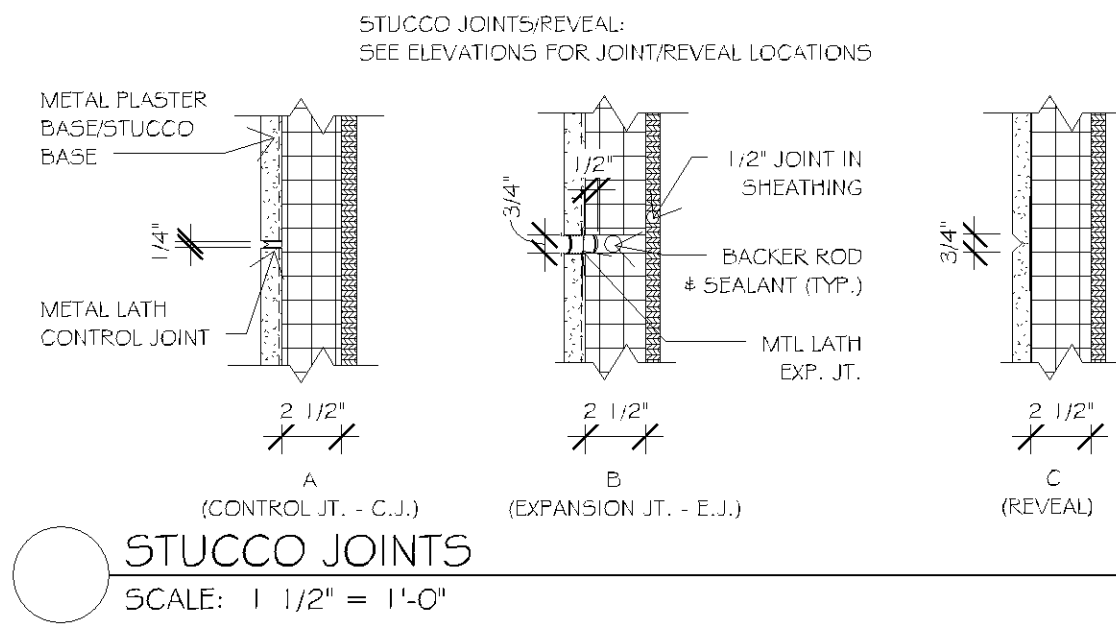
**5 STORIES  
171 UNITS**

PROJECT OWNER:  
**HAWKEYE HOTELS**

PROJECT LOCATION:  
**BLOOMINGTON, MN**

SHEET TITLE:  
**EXTERIOR ELEVATIONS**

PROJECT NUMBER: **33476**  
SHEET NUMBER: **A201**



STUCCO JOINTS  
SCALE: 1 1/2" = 1'-0"

- EXTERIOR ELEVATION NOTES
- ALL EXTERIOR VENTS & LOUVERS TO BE PAINTED TO MATCH ADJACENT WALL COLOR. SEE MECHANICAL FOR SIZE AND LOCATIONS.
  - FOAM PLASTIC INSULATION GREATER THAN 4" IN THICKNESS SHALL HAVE A MAXIMUM FLAME SPREAD INDEX OF 75 AND A SMOKE DEVELOPED INDEX OF 450 WHERE TESTED AT A MINIMUM THICKNESS OF 4".
  - PROVIDE BLOCKING AND ELECTRICAL CIRCUITING TOO ALL SIGN LOCATIONS. COORDINATE WITH SIGN CONTRACTOR.
  - STUCCO NOT TO EXCEED 144 SQ. FT. W/O CONTROL JOINT. SEE DETAILS FOR CONTROL AND EXPANSION JOINTS.

Performance standards have been established for the use of acrylic finish on stucco, EIFS, or other secondary materials, is limited to no more than 15% of any given elevation.

EXTERIOR MATERIALS LEGEND	
	STUCCO COLOR #1 - PAREX - SAND SMOOTH (533) - COLOR: #30111 "SUN DRIED"
	STUCCO COLOR #2 - PAREX - SAND FINE (534) - COLOR: #30211 "TWIG"
	STUCCO COLOR #3 - PAREX - SAND SMOOTH (533) - COLOR: #30271 "WOODLAND"
	STUCCO COLOR #4 - (AT ROOF COPING) - PAREX - SAND SMOOTH (533) - COLOR: #104001 "SNOWBALL"
	MANUFACTURED STONE - BOULDER CREEK, FAST STAK, COLOR: "TAFFA BEIGE"
STUCCO - DO NOT EXCEED 144 SF BETWEEN CONTROL JOINTS. THE DISTANCE BETWEEN CONTROL JOINTS SHOULD NOT EXCEED 18 FEET IN EITHER DIRECTION WITH A LENGTH TO WIDTH RATIO OF 2.5 TO 1.	



1 SOUTH EXTERIOR ELEVATION  
SCALE: 1/8" = 1'-0"



2 WEST EXTERIOR ELEVATION  
SCALE: 1/8" = 1'-0"

EXTERIOR ELEVATION NOTES	
1.	ALL EXTERIOR VENTS & LOUVERS TO BE PAINTED TO MATCH ADJACENT WALL COLOR. SEE MATCHBOOK FOR SIZE AND LOCATIONS.
2.	FOAM PLASTIC INSULATION GREATER THAN 4" IN THICKNESS SHALL HAVE A MAXIMUM FLAME SMOKE INDEX OF 75 AND A SMOKE DEVELOPED INDEX OF 450 WHERE TESTED AT A MINIMUM THICKNESS OF 4".
3.	PROVIDE BLOCKING AND ELECTRICAL CIRCUITS TOO ALL SIGN LOCATIONS; COORDINATE WITH SIGN CONTRACTOR.
4.	STUCCO NOT TO EXCEED 144 SQ. FT. W/O CONTROL JOINT. SEE DETAILS FOR CONTROL AND EXPANSION JOINTS.

EXTERIOR MATERIALS LEGEND	
	STUCCO COLOR #1 - PAREX - SAND SMOOTH (533) - COLOR: #3011 "SUN DRIED"
	STUCCO COLOR #2 - PAREX - SAND FINE (534) - COLOR: #3021L "TWIG"
	STUCCO COLOR #3 - PAREX - SAND SMOOTH (533) - COLOR: #5027L "MOONDANCE"
	STUCCO COLOR #4 - (AT ROOF COPING) - PAREX - SAND SMOOTH (533) - COLOR: #10400L "SNOWBALL"
	MANUFACTURED STONE - BOULDER CREEK, FAST STAK, COLOR: "JAPPA BEIGE"
STUCCO - DO NOT EXCEED 144 SQ. FEET BETWEEN CONTROL JOINTS. THE DISTANCE BETWEEN CONTROL JOINTS SHOULD NOT EXCEED 18 FEET IN EITHER DIRECTION WITH A LENGTH TO WIDTH RATIO OF 5 TO 1.	

Certification & Seal:

Revision	Date
DATE:	2017-03-15
ISSUED:	
PHASE:	CITY REVIEW

PROJECT TITLE:  
**HOLIDAY INN  
EXPRESS & SUITES**

**5 STORIES  
171 UNITS**

PROJECT OWNER:  
**HAWKEYE HOTELS**

PROJECT LOCATION:  
**BLOOMINGTON, MN**

SHEET TITLE:  
**EXTERIOR ELEVATIONS**

PROJECT  
NUMBER  
**33476**

SHEET  
NUMBER  
**A202**





**CITIES EDGE**  
**ARCHITECTS**

855 Community Drive, Sauk City, WI 53583

Phone: 608-643-4100 Fax: 608-643-7909

[www.CitiesEdgeArchitects.com](http://www.CitiesEdgeArchitects.com)

CITIES EDGE, LLC IS A WHOLLY OWNED SUBSIDIARY OF MUMFORD ASSOCIATES, INC.





**CITIES EDGE**  
**ARCHITECTS**

855 Community Drive, Sauk City, WI 53583

Phone: 608-643-4100 Fax: 608-643-7999

[www.CitiesEdgeArchitects.com](http://www.CitiesEdgeArchitects.com)

© 2010 CITIES EDGE ARCHITECTS, LLC. ALL RIGHTS RESERVED. PHOTOGRAPHY BY JEFFREY J. HARRIS