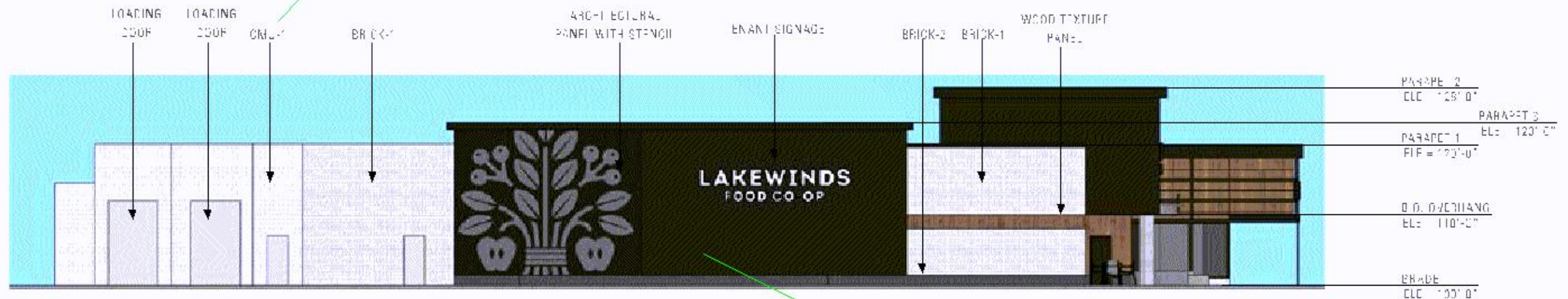


LAKEWINDS SOUTH ELEVATION
1/8" = 1'-0"

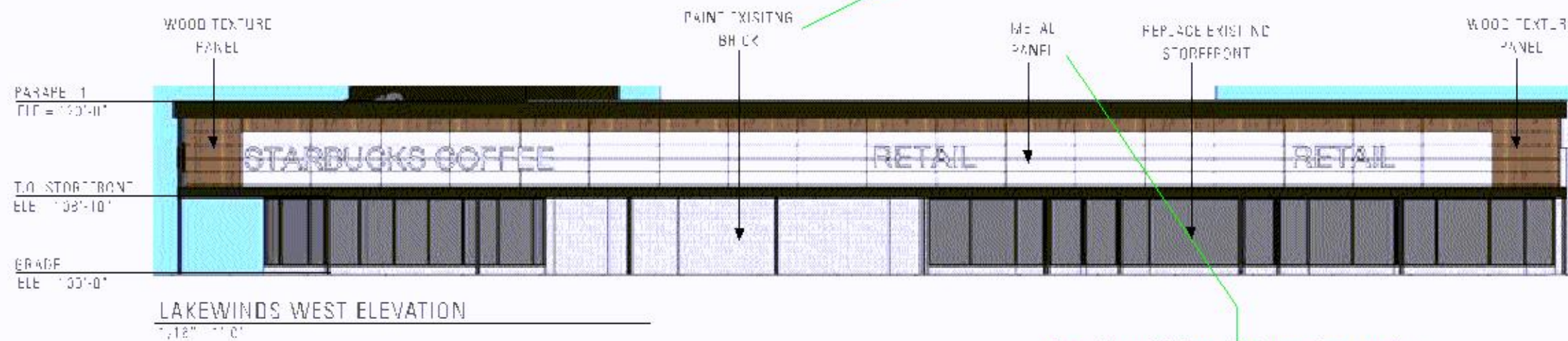
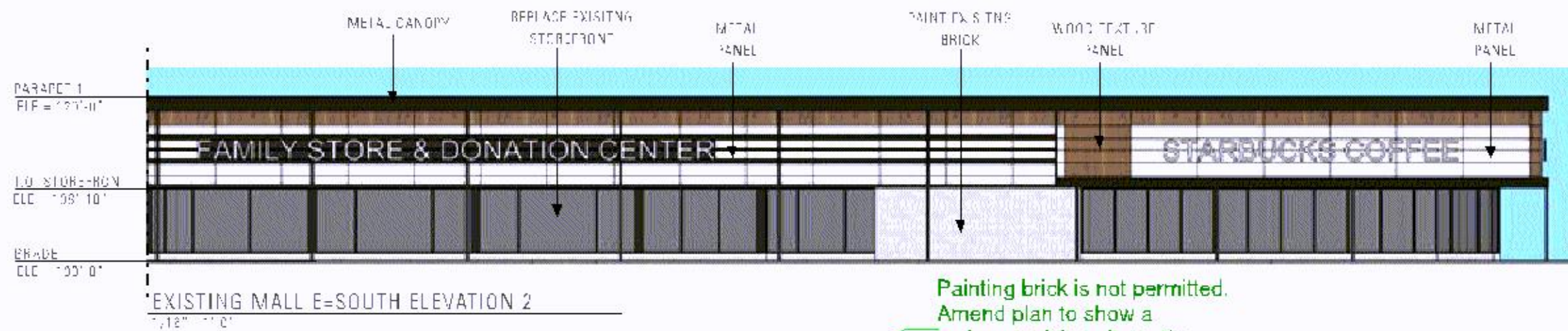
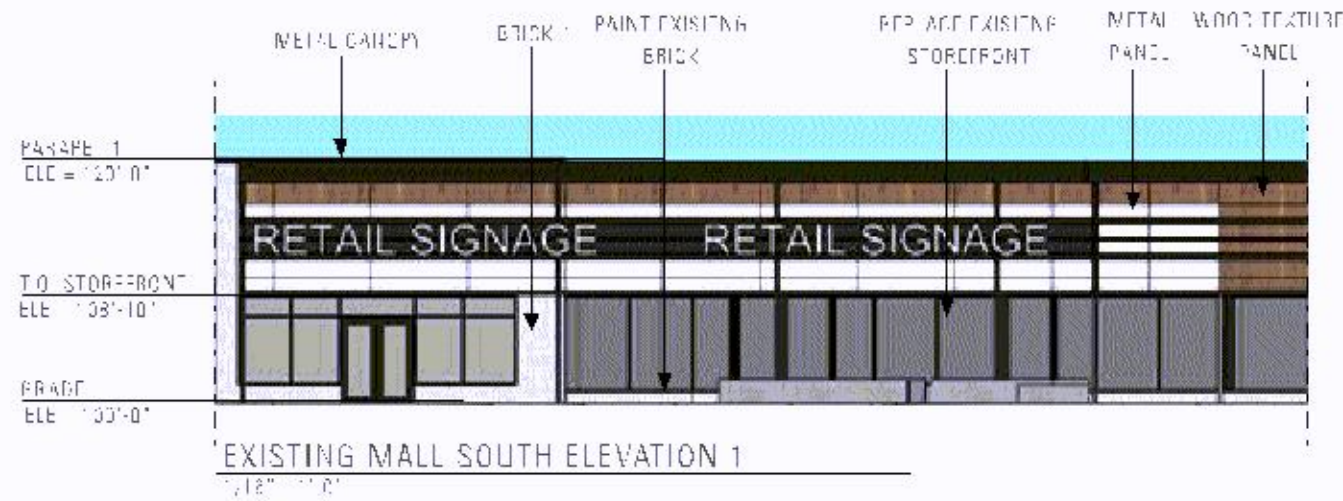
CMUs are not a permitted exterior building material. Select brick as the proposed building material or request a deviation to allow a split-faced CMU. Staff would need to evaluate the merits of that deviation from exterior materials standards.

The north building elevation was not included in the submittal. What is proposed for the north elevation?



LAKEWINDS WEST ELEVATION
1/8" = 1'-0"

Are the "architectural panels fiber cement panels? If so, they are limited to 15 percent of a given building elevation.



Painting brick is not permitted. Amend plan to show a code-complying alternative.

Provide additional information on the proposed metal panels. There are panel thickness and durability requirements. Specifically, the City requires a minimum 30-year manufacturer finish warranty.

