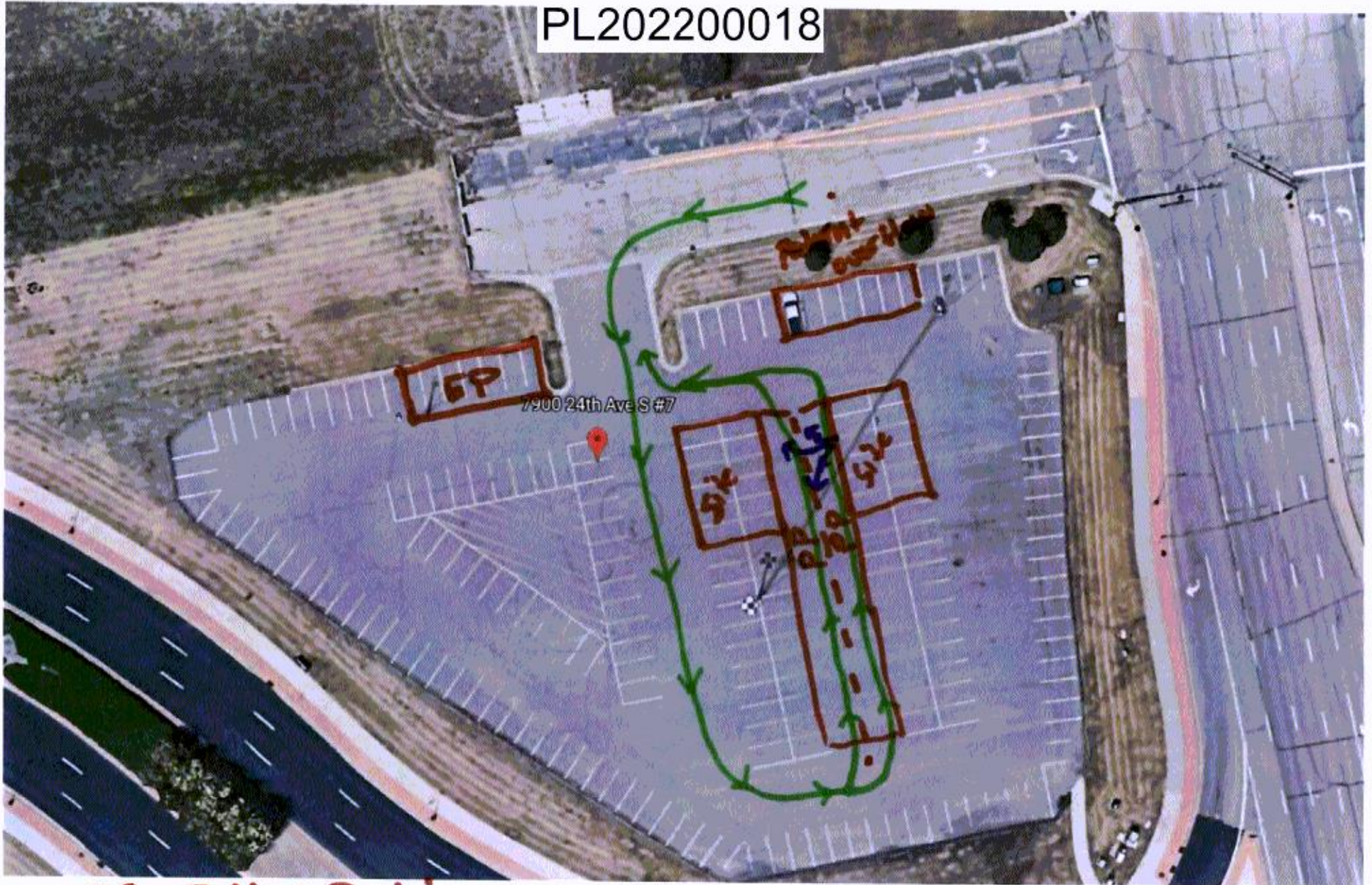


# Bloomington, Minnesota

PL202200018




- PP - Patient Parking
- EP - Employee Parking

- Nurses/Runners
- Traffic Flow

PL202200018

Entrance

A photograph showing a paved area, likely an entrance to a facility, with a large, shallow puddle of water in the center. The word "Entrance" is overlaid in large black text on the puddle. In the background, there is a grassy field, a road with several signs, and a cloudy sky. The overall scene appears to be an outdoor parking or access area.

PL202200018

Entrance  
(South view)



PL202200018

# Drive thru lanes

Employee  
parking



PL202200018

# Main Trailer (East side of lot)



PL202200018

# Break trailer (West side of lot)



PL202200018



PL202200018





PL202200018

