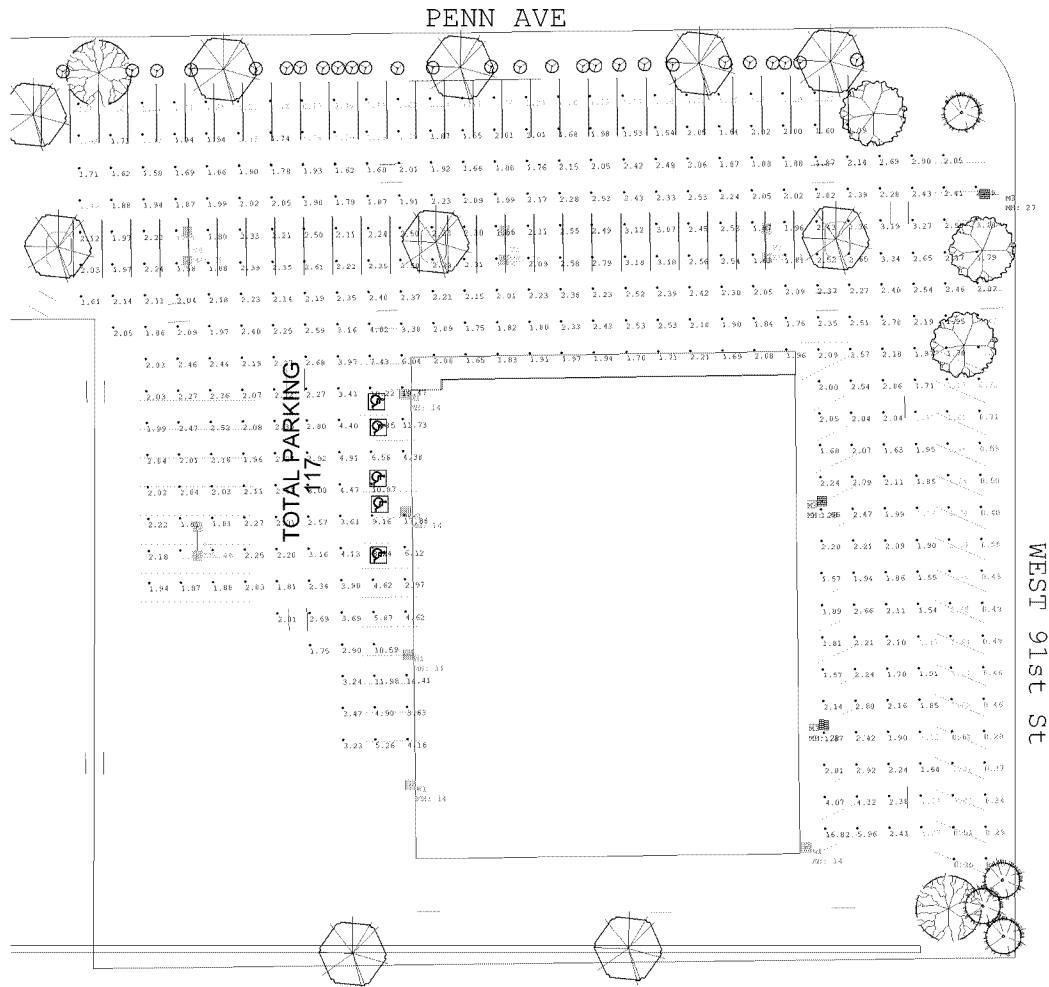


PL202200092
PL2022-92



Scale: 1 inch= 30 Ft.

Luminaire Schedule						
Symbol	Qty	Label	Arrangement	Lumens	LLF	Description
	3	M3	SINGLE	23000	0.750	LSI GFM-3-250-PSMV-F
	4	V5	BACK-BACK	23000	0.750	LSI GFM-5-250-PSMV-F
	5	W1	SINGLE	22000	0.750	LSI GBWM-FT-250-PSMH-F

Calculation Summary							
Label	CalcType	Units	Avg	Max	Min	Avg/Min	Max/Min
Parking	Illuminance	Fc	2.42	19.47	0.20	12.10	97.35
Inner parking	Illuminance	Fc	2.75	19.47	1.07	2.57	18.20
Outer parking	Illuminance	Fc	1.34	3.27	0.20	6.70	16.35

APPROVED
By Londell Pease at 10:56 am, Aug 19, 2014

INSPECTIONS REQUIRED

- 1) Prior to the installation, an inspection to verify delivery of the approved lamp, fixture, and pole must be completed.
- 2) Before a Certificate of Occupancy may be issued, a post-installation inspection by the Issuing Authority must verify compliance with the approved plan depicting the initial foot-candle levels.

Individual points may not vary more than 20 percent from the initial light level on the approved plan.

Any deviation below the Code requirements for the plan must be remedied prior to the issuance of a Certificate of Occupancy. (See City Code Section 21.307.02)

CALL (952) 563-8920 for an inspection.

Drawn By: RF
Sales Agent: Steve Hahn
Date: 7/2/2014
Scale: 1" = 30'

9056 Penn Ave South
LSI Greenbrier MH

LS952-841

#	Date	Comments

Revisions

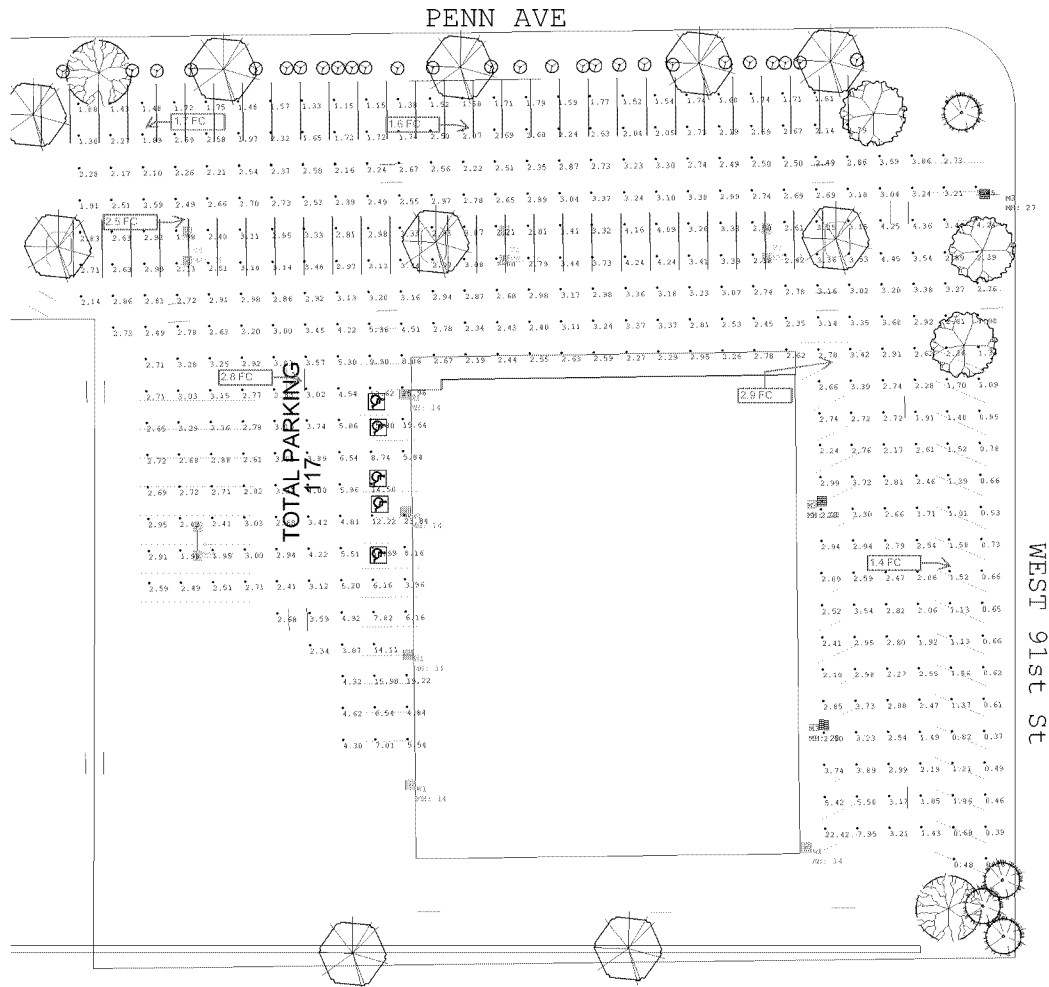
Luma Sales Associates
Lighting and Controls



These drawings are for conceptual use only and are not intended for construction. Values represented are an approximation generated from manufacturers photometric inhouse or independent lab tests with data supplied by lamp manufacturers.

Inspected on August 18, 2014
by Dennis Fields.
PASSED INSPECTION
See inspection noted on plan.

PL202200092
PL2022-92



Scale: 1 inch= 30 Ft.

Luminaire Schedule						
Symbol	Qty	Label	Arrangement	Lumens	LLF	Description
	3	M3	SINGLE	23000	1.000	LSI GFM-3-250-PSMV-F
	4	V5	BACK-BACK	23000	1.000	LSI GFM-5-250-PSMV-F
	5	W1	SINGLE	22000	1.000	LSI GBWM-FT-250-PSMH-F

Calculation Summary							
Label	CalcType	Units	Avg	Max	Min	Avg/Min	Max/Min
Parking	Illuminance	Fc	3.23	25.96	0.26	12.42	99.85
Inner parking	Illuminance	Fc	3.67	25.96	1.43	2.57	18.15
Outer parking	Illuminance	Fc	1.79	4.36	0.26	6.88	16.77

APPROVED
By Londell Pease at 10:57 am, Aug 19, 2014

INSPECTIONS REQUIRED

- 1) Prior to the installation, an inspection to verify delivery of the approved lamp, fixture, and pole must be completed.
- 2) Before a Certificate of Occupancy may be issued, a post-installation inspection by the Issuing Authority must verify compliance with the approved plan depicting the initial foot-candle levels.
Individual points may not vary more than 20 percent from the initial light level on the approved plan.

Any deviation below the Code requirements for the plan must be remedied prior to the issuance of a Certificate of Occupancy (See City Code Section 21.307.07)

CALL (952) 563-8920 for an inspection.

Luma Sales Associates
Lighting and Controls

Drawn By: RF
Sales Agent: Steve Hahn
Date: 7/2/2014
Scale: 1" = 30'

9056 Penn Ave South
LSI Greenbrier MH Initial

#	Date	Comments

Revisions

These drawings are for conceptual use only
and are not intended for construction. Values
represented are an approximation generated from
manufacturers photometric inhouse or independent
lab tests with data supplied by lamp manufacturers.