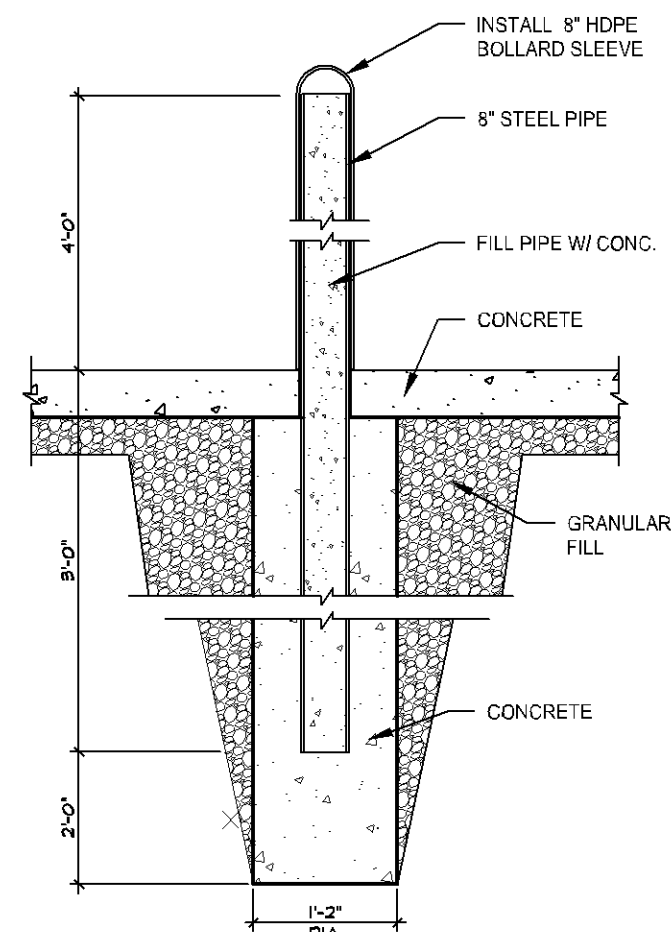


Plans approved
11/30/2022



(F15) BOLLARD DETAIL NOT TO SCALE

1 APPROVE / GO LIGHT. ATTACH TO CONCRETE. PROVIDED BY OTHERS.

2 BOLLARD. S.D. F15.

3 CAMERA POLE. 18" X 2' DEEP SONOTUBE. TOP OF CONCRETE TO MATCH FINISH GRADE. PROVIDED BY OTHERS.

4 CAMERA POLE. ATTACH TO CONCRETE. PROVIDED BY OTHERS.

5 DIRECTIONAL CLEAN CAR / VACUUM" SIGN. 18" X 2' DEEP SONOTUBE. TOP OF CONCRETE TO MATCH FINISH GRADE. SIGN BY OTHERS.

6 DIRECTIONAL ENTRANCE SIGN. 18" X 2' DEEP SONOTUBE. TOP OF CONCRETE TO MATCH FINISH GRADE. SIGN BY OTHERS.

7 DIRECTIONAL EXIT SIGN. 18" X 2' DEEP SONOTUBE. TOP OF CONCRETE TO MATCH FINISH GRADE. SIGN BY OTHERS.

8 NOT USED

9 GATE. ATTACH TO CONCRETE. PROVIDED BY OTHERS.

10 LICENSE PLATE READER. 18" X 2' DEEP SONOTUBE. TOP OF CONCRETE TO MATCH FINISH GRADE. PROVIDED BY OTHERS.

11 LICENSE PLATE READER. ATTACH TO CONCRETE. PROVIDED BY OTHERS.

12 LIGHT POLE. COORDINATE WITH SITE ELECTRICAL.

13 PYLON SIGN. PERMIT AND SIGN BY OTHERS

14 RELAX / GO SIGN. 18" X 2' DEEP SONOTUBE. TOP OF CONCRETE TO MATCH FINISH GRADE. SIGN BY OTHERS.

15 TRANSFORMER PAD. COORDINATE SIZE AND EXACT LOCATION WITH THE ELECTRICAL CONTRACTOR.

16 NOT USED

17 NOT USED

18 NOT USED

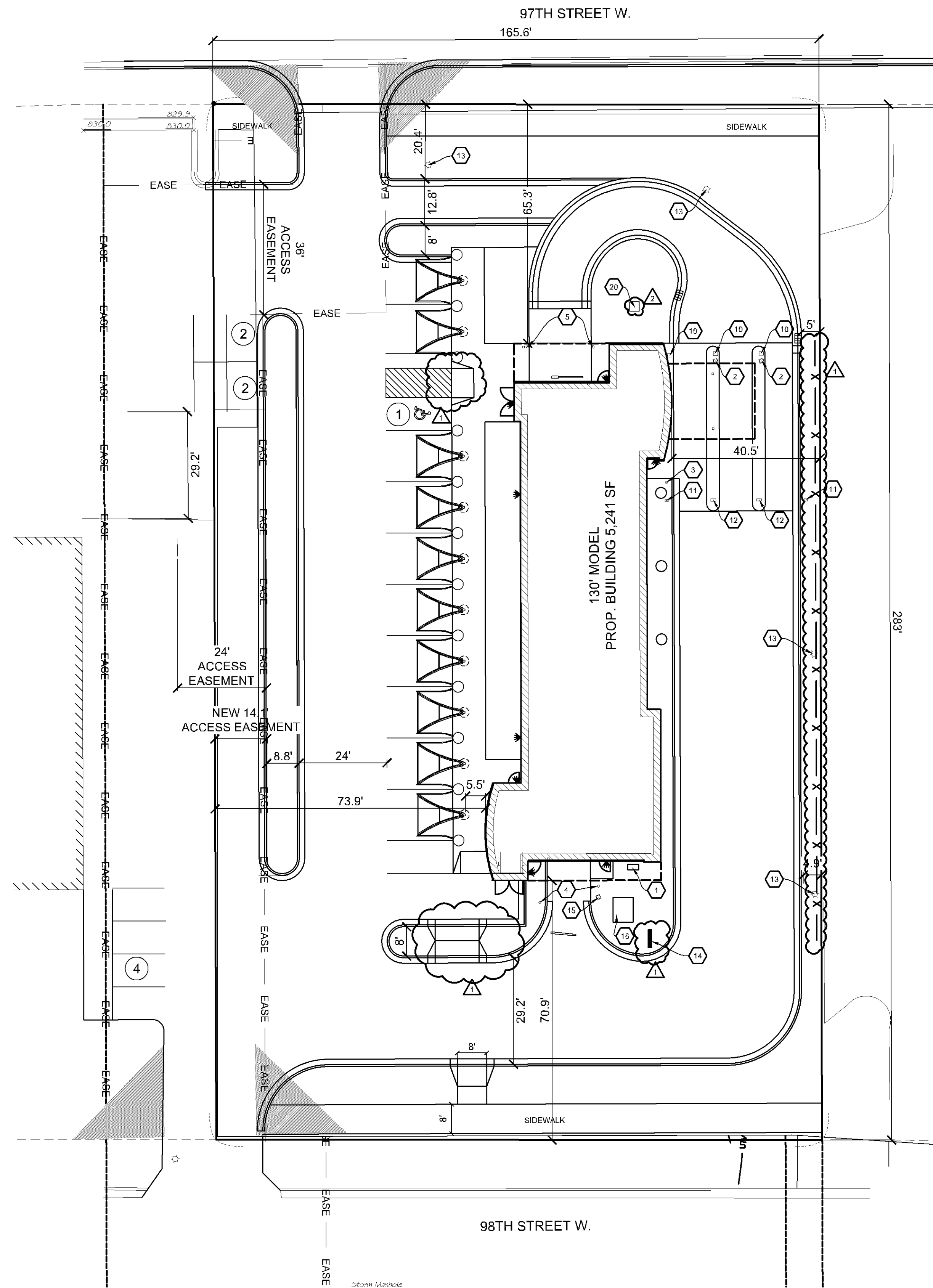
19 AIR CONDITIONING CONDENSING UNIT. 3' X 3' CONCRETE PAD. TOP OF CONCRETE TO MATCH FINISH GRADE.

20

ZONED B-2: NEIGHBORHOOD COMMERCIAL DISTRICT

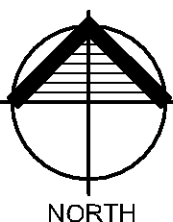
TOTAL LOT AREA:	46,859 SF (1.08 ACRES):
BUILDING COVERAGE:	(11%) 5,241 SF
SETBACKS:	
FRONT	35 FT
SIDE YARD	10 FT
REAR YARD	15 FT
ALONG RESIDENTIAL	50 FT
PARKING:	
8 QUEUING SPACES PER BAY + 1 SPACE PER 375 SQ FT OF GROSS FLOOR AREA	
5,241 SQFT/ 375 SQFT = 13.976	14 REQUIRED SPACES
PARKING SPACES PROVIDED:	11 PARKING SPACES + 1 ACCESSIBLE

PROPERTY LINE		NEW SEWER MAIN
SETBACKS		NEW SANITARY CLEANOUT
EASEMENT		NEW SANITARY SEWER MANHOLE
EX. PROP. CORNERS		NEW WATER MAIN
BENCH MARK		NEW TAPPING
1" CP		TEE W/ VALVE
P/P/TJ		NEW TEE
1" SP		NEW 22 1/2" ELBOW
1/2" SP		NEW 80" ELBOW
EX. ELEC. TRANSFORMER		NEW GATE VALVE
ACCESSIBLE PARKING SIGN		
EX. CURB AND GUTTER		NEW HYDRANT W/ GATE VALVE
EX. UNDERGROUND TELEPHONE		NEW STORM SEWER
EX. UNDERGROUND TELEVISION		NEW STORM SEWER MANHOLE
EX. UNDERGROUND ELECTRIC		
EX. UNDERGROUND GAS		NEW CATCH BASIN
EX. OVERHEAD ELECTRIC		REMOVE CURB AND GUTTER
EX. SANITARY SEWER MAIN		LIGHT POLE
EX. WATER MAIN		
EX. STORM SEWER		906.3 FL. • PROPOSED ELEVATIONS
EX. STORM SEWER MANHOLE		905.6 GS ○ EXISTING ELEVATIONS
EX. SANITARY SEWER MANHOLE		
EX. STORM CATCH BASIN		1" EX. CONTOUR INTERVALS
NEW INFLOW CURB AND GUTTER		5" EX. CONTOUR INTERVALS
NEW OUT FLOW CURB AND GUTTER		1" NEW CONTOUR INTERVALS
FUTURE CURB AND GUTTER		5" NEW CONTOUR INTERVALS
NEW CONCRETE PAVING EDGE		
EX. CONCRETE PAVING EDGE		6" HIGH FENCE



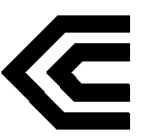
(K6) SITE & SIGNAGE PLAN

SCALE: 1" = 20'

[illegible]

CAR WASH
200 W 98TH ST.
BLOOMINGTON, MN 55420

P3280



CHRISTIANSON
COMPANIES

PH. (701) 281-9500
FAX (701) 281-9501

**4609 33RD AVE. S.
SUITE 400
FARGO, ND 58104**

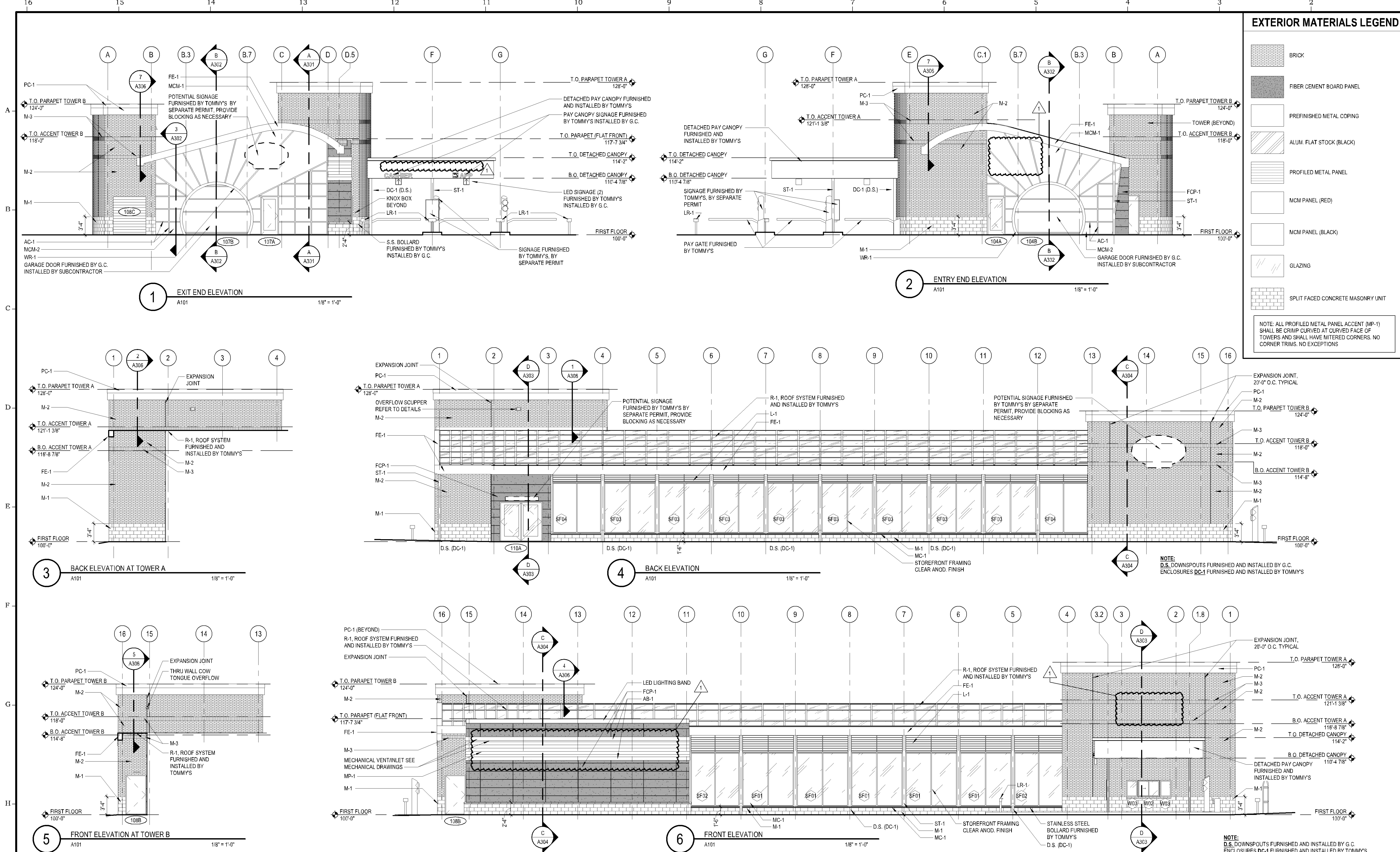


SHEET DESCRIPTION:

SITE & SIGNAGE PLAN

Sheet

A090



TAG	MATERIAL	MANUFACTURER	DESCRIPTION	COLOR	FURNISHED BY	INSTALLED BY	TAG	MATERIAL	MANUFACTURER	DESCRIPTION	COLOR	FURNISHED BY	INSTALLED BY
ST-1	STRUCTURAL STEEL	RBI	POWDER COATED STRUCTURAL STEEL	RAL 3001	TOMMY'S	TOMMY'S	AC-1	PREFIN. ALUM. CLOSURE CAPS	TUBELITE	TUBELITE 200 SERIES STOREFRONT	CLEAR ANNOIDIZED	TOMMY'S	SUBCONTRACTOR
MP-1	PROFILED ALUMINUM METAL PANEL	ATAS	ATAS 7.2 BWR360 BELVEDERE	SILVERSMITH	TOMMY'S	SUBCONTRACTOR	SF01, SF02, SF03	PREFIN. ALUM. STOREFRONT WITH INSULATED GLASS	KAWNEER	1" INSULATED GLASS LOW-E	CLEAR ANNOIDIZED	G.C.	SUBCONTRACTOR
M-1	SPLIT-FACE CMU	CONSUMERS	4" VENEER SPLIT-FACED	ASH (MORTAR TO MATCH)	G.C.	SUBCONTRACTOR	SF04	PREFIN. ALUM. STOREFRONT WITH METAL PANEL INFILL	KAWNEER/ CITADEL	1" GLAZE GUARD 1000 WR+ PANEL INFILL SEE DETAIL ON A602	CLEAR ANNOIDIZED FRAMES/ EBONY INFILL PANELS	G.C.	SUBCONTRACTOR
M-2	BRICK	GLEN-GRAY	KLAYCOAT; STANDARD MODULAR; RUNNING BOND	STONE GRAY	SUBCONTRACTOR	SUBCONTRACTOR	DC-1	PREFINISHED ALUMINUM	ALPOLIC	4MM MCM PANELS DOWNSPOUT COVER	METALLIC SILVER	TOMMY'S	TOMMY'S
M-3	BRICK	GLEN-GRAY	GLAZED; STANDARD MODULAR; SOLDIER COURSE	BLACK	SUBCONTRACTOR	SUBCONTRACTOR	LR-1	LICENSE PLATE READER	TOMMY'S	BOLLARD	STAINLESS STEEL	TOMMY'S	SUBCONTRACTOR
MC-1	SMOOTH OR SPLIT-FACE CMU		CMU CAP	MATCH CMU COLOR	G.C.	SUBCONTRACTOR	WR-1	PREFIN. ALUM. COMPOSITE PANELS	ARCONIC	MCM WRAP COVER FOR STEEL RING	CLEAR ANNOIDIZED	TOMMY'S	SUBCONTRACTOR
FCP-1	FIBER CEMENT PANELS	NICHIHA	ARCHITECTURAL BLOCK SERIES 18" H x 72" W	GRAY	G.C.	SUBCONTRACTOR	FE-1	FASCIA / EAVE	ALPOLIC	4MM MCM PANELS AT EAVES AND FASCIA	METALLIC SILVER	TOMMY'S	TOMMY'S
AB-1	PREFIN. ALUM. ACCENT BANDING	ATAS	ATAS FLAT SHEET	BLACK	TOMMY'S	SUBCONTRACTOR	L-1	PREFIN. ALUM LOUVER	RUSKIN	DRAINABLE LOUVER	CLEAR ANNOIDIZED	TOMMY'S	TOMMY'S
PC-1	PREFIN. ALUM. PARAPET CORNICE	ARCONIC	REYNOBOND COMPOSITE PANELS	BRIGHT SILVER METALLIC	TOMMY'S	SUBCONTRACTOR	R-1	ACRYLIC ROOF SYSTEM	ACRYLITE	DRAINABLE ACRYLIC ROOF SYSTEM	COOL BLUE	TOMMY'S	TOMMY'S
MCM-1	PREFIN. ALUM. COMPOSITE PANELS	LAMINATORS	LAMINATORS OMEGA SERIES	BRITE RED	TOMMY'S	SUBCONTRACTOR							
MCM-2	PREFIN. ALUM. COMPOSITE PANELS	CITADEL	PVDF (KYNAR) FINISH	EBONY	TOMMY'S	SUBCONTRACTOR							

DATE: 07/08/2022
PROJECT NO: 21-970
DRAWN BY: EK
CHECKED BY: 2F
REVISIONS:
1 08/26/2022

COPYRIGHT © DESIGN RESOURCES GROUP

CAR WASH

200 W. 98TH ST.
BLOOMINGTON, MN

P3280

ARCHITECT

I hereby certify that this plan, specification, or report was prepared by me or under my direct supervision and that I am a duly Licensed Architect under the laws of the State of Minnesota.
Signature:
Typed or Printed Name: Blake C. Carlson
License Number: 45563
Date: 07/08/2022

CHRISTIANSON COMPANIES

PH. (701) 281-9500
FAX (701) 281-9501

4609 33RD AVE. S.
SUITE 400
FARGO, ND 58104

IDG
DESIGN RESOURCES GROUP

PH. (701) 499-0212
FAX (701) 281-9501

SHEET DESCRIPTION:
EXTERIOR ELEVATIONS

Sheet
A201

Plans approved
11/30/2022

PL2022-54
PL202200054

