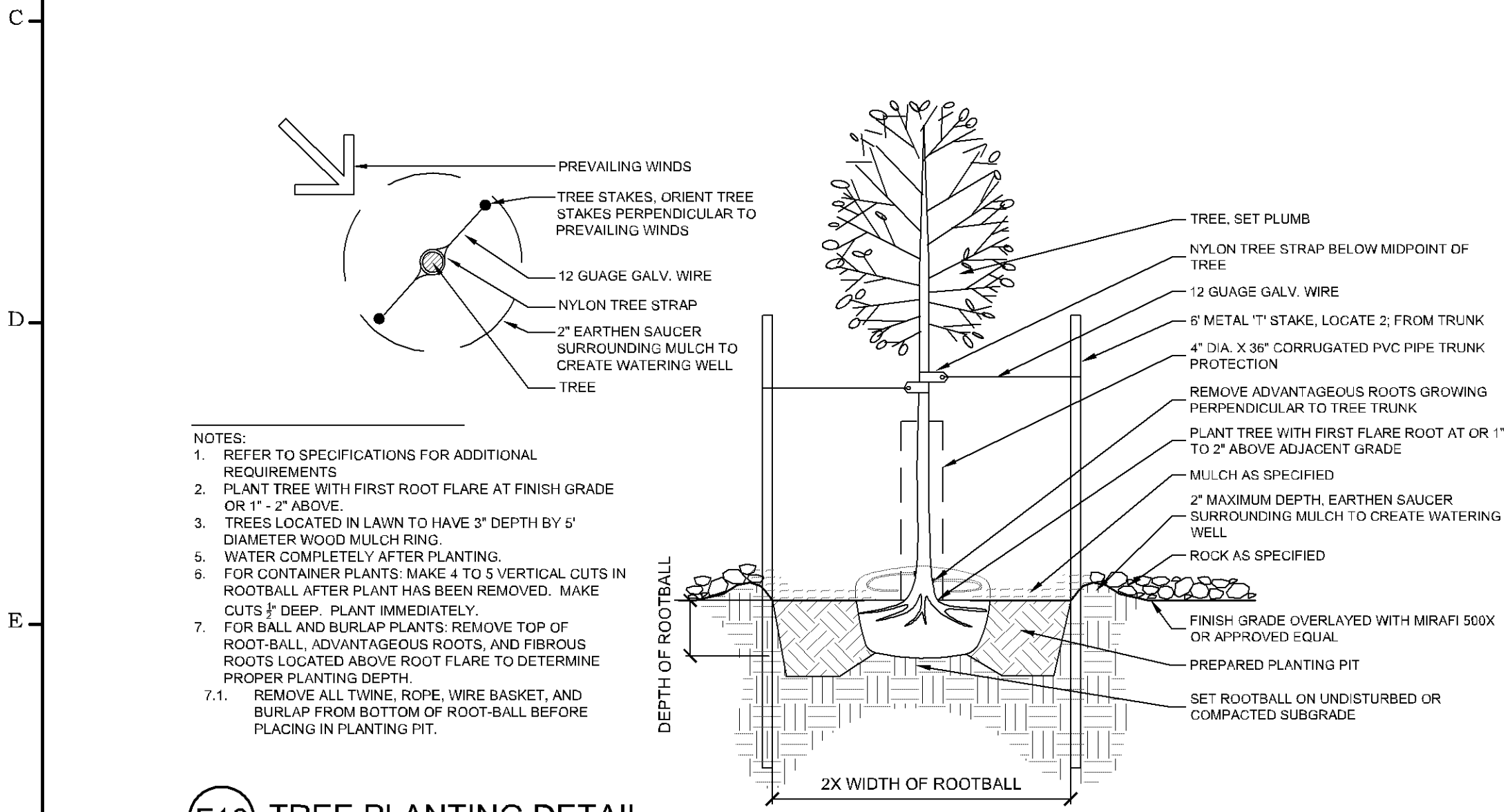


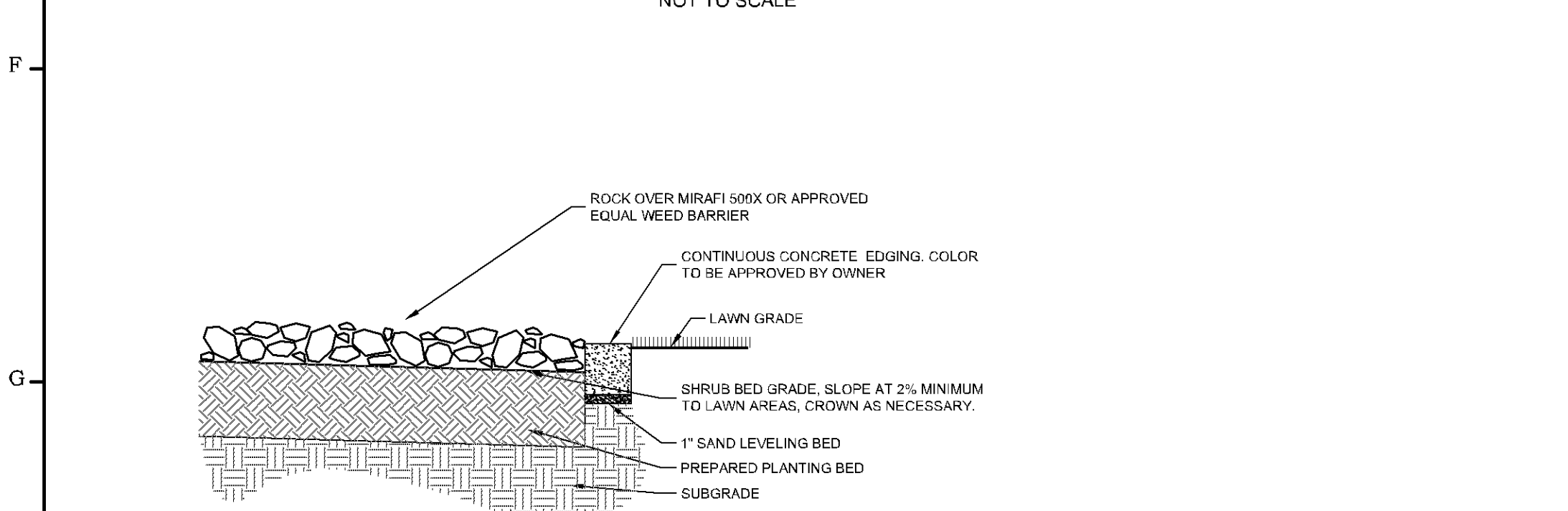
- NOTES:
1. REFER TO SPECIFICATIONS FOR ADDITIONAL REQUIREMENTS
 2. SPREAD MULCH SO THAT IT IS 3\"/>

C16 SHRUB PLANTING DETAIL
NOT TO SCALE



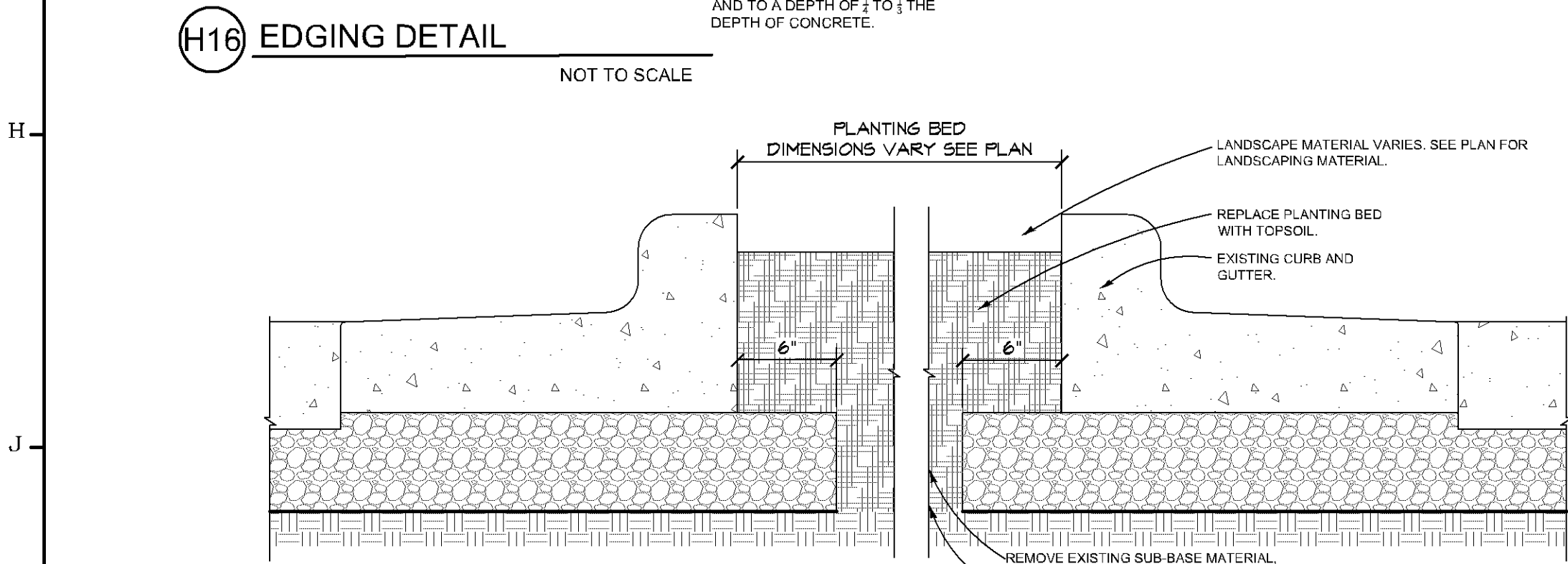
- NOTES:
1. REFER TO SPECIFICATIONS FOR ADDITIONAL REQUIREMENTS
 2. SPREAD MULCH SO THAT IT IS 3\"/>

C12 PERENNIAL PLANTING DETAIL
NOT TO SCALE



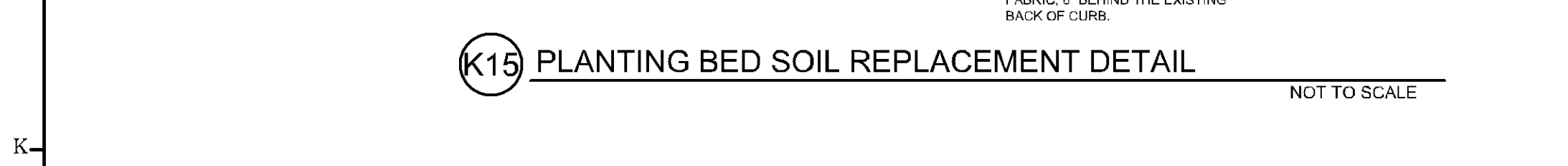
- NOTES:
1. REFER TO SPECIFICATIONS FOR ADDITIONAL REQUIREMENTS
 2. PLANT TREE WITH FIRST ROOT FLARE AT FINISH GRADE OR 1\"/>

F16 TREE PLANTING DETAIL
NOT TO SCALE



- NOTES:
1. TOOL CONTROL JOINTS EVERY 2\"/>

H16 EDGING DETAIL
NOT TO SCALE



K15 PLANTING BED SOIL REPLACEMENT DETAIL
NOT TO SCALE

IRRIGATION NOTES

1. ALL ROCK PLANTING BEDS SHALL BE PROVIDED WITH DRIP IRRIGATION.
2. ALL SOD AREAS SHALL BE PROVIDED WITH WITH A POP-UP IRRIGATION SYSTEM SPACED TO ADEQUATELY WATER ALL TURF AREAS - INCLUDING BOULEVARD.

LEGEND

- PATCH EXISTING TURF AREAS WITH HYDROSEED.
- 28\"/>
- IRRIGATION SLEEVE.
- 8\"/>

KEY NOTES

1. 2\"/>
2. SOD.
3. 4\"/>
4. PROVIDE CONCRETE LANDSCAPING EDGING (S.D. H16).
5. PROVIDE 1.5\"/>
6. GRANULAR FILL AND GEOFABRIC IN PLANTING BEDS REMOVED BY EARTHWORK CONTRACTOR (S.D. K15).

LANDSCAPING NOTES

1. ALL PLANTINGS SHALL HAVE MULCH RING AROUND BASE AS DETAILED.
2. THOROUGHLY WATER ALL PLANTING BEDS TWICE IN THE FIRST 48 HOURS.
3. THE LANDSCAPE PLAN AND DETAIL SHEET ARE FOR LANDSCAPING INFORMATION ONLY. PLEASE REFER TO THE SITE, GRADING, UTILITIES, AND OTHER RELATIVE PLANS FOR ALL OTHER INFORMATION.
4. THE LOCATIONS FOR PLANT MATERIAL ARE APPROXIMATE AND ARE SUBJECT TO FIELD ADJUSTMENT DUE TO SLOPE, VEGETATION, AND OTHER SITE FACTORS.
5. COORDINATE PLANT MATERIAL LOCATIONS WITH SITE UTILITIES. SEE SITE LAYOUT, GRADING, AND UTILITY PLANS FOR STORM, SANITARY, AND WATER LINES. SEE LIGHTING PLAN FOR ELECTRICAL AND LIGHTING LAYOUT AND DETAILS. UTILITY LOCATIONS ARE APPROXIMATE. EXERCISE CARE WHEN DIGGING IN AREAS OF POTENTIAL CONFLICT WITH UNDERGROUND OR OVERHEAD UTILITIES. THE CONTRACTOR IS RESPONSIBLE FOR ANY DAMAGE DUE TO CONTRACTOR'S NEGLIGENCE AND SHALL REPLACE OR REPAIR ANY DAMAGE AT CONTRACTOR'S EXPENSE.
6. LANDSCAPE PLANTING BEDS MUST BE FREE DRAINING. PAVEMENT, COMPACTED SUBGRADE, AND ANY ROCK SHALL BE REMOVED FROM WITHIN BEDS TO BE LANDSCAPED TO A DEPTH OF 2\"/>
7. APPLY FERTILIZER, SULPHUR, LIME, ETC. AS RECOMMENDED BY LANDSCAPE CONTRACTOR AND/OR SOIL ANALYSIS.
8. TREES AND SHRUBS SHALL BE NURSERY GROWN UNLESS OTHERWISE NOTED AND HARDY UNDER CLIMATIC CONDITIONS SIMILAR TO THOSE IN THE LOCATION OF THE PROJECT. THEY SHALL BE TYPICAL OF THEIR SPECIES OR VARIETY, WITH NORMAL HABIT OF GROWTH. THEY SHALL BE SOUND, HEALTHY, VIGOROUS, WELL-BRANCHED AND DENSELY FOLIATED WHEN IN LEAF. THEY SHALL BE FREE OF DISEASE, INSECT PESTS, EGGS, OR LARVAE. THEY SHALL HAVE HEALTHY AND WELL-DEVELOPED ROOT SYSTEMS. ALL TREES SHALL HAVE STRAIGHT SINGLE TRUNKS WITH THEIR MAIN LEADER INTACT UNLESS OTHERWISE STATED. THE LANDSCAPE DESIGNER SHALL ONLY PERMIT SUBSTITUTIONS UPON WRITTEN APPROVAL. THEIR SIZES SHALL CONFORM TO THE MEASUREMENT SPECIFIED ON THE DRAWINGS. PLANTS LARGER THAN SPECIFIED ON THE DRAWINGS MAY BE USED IF APPROVED. THE USE OF SUCH PLANTS SHALL NOT INCREASE THE CONTRACT PRICE.

PLANT SCHEDULE

TREES (S.D. F16)	CODE	BOTANICAL / COMMON NAME	SIZE	METHOD	QTY
	ACE ABZ	Acer x freemanii 'Jeffersred' TM Autumn Blaze Freeman Maple	1.5' Cal.	Container	5
	GLE SKY	Gleditsia triacanthos 'Skyline' Skyline Honey Locust	2.5' Cal.	Container	5
	MAL PRA	Malus x 'Prairifire' Prairifire Crabapple	1.5' Cal.	Container	6
	TIL AME	Tilia americana American Linden	2.5' Cal.	Container	4
SHRUBS (S.D. C16)	CODE	BOTANICAL / COMMON NAME	SIZE	METHOD	QTY
	COR FL2	Cornus sericea 'Flaviramea' Yellow Twig Dogwood	2 gal.	Container	5
	COR FA4	Cornus sericea 'Farrow' TM Arctic Fire Red Twig Dogwood	2 gal.	Container	5
	HYD J23	Hydrangea paniculata 'Jane' TM Little Lime Panicle Hydrangea	2 gal.	Container	7
	PHY DON	Physocarpus opulifolius 'Donna May' TM Little Devil Dwarf Ninebark	2 gal.	Container	8
	RIB ALP	Ribes alpinum Alpine Currant	2 gal.	Container	44
	ROS 478	Rosa x 'Champlain' Champlain Shrub Rose	2 gal.	Container	3
	VIB BAI	Viburnum trilobum 'Bailey Compact' Bailey's Compact Cranberrybush	2 gal.	Container	8
PERENNIALS (S.D. C12)	CODE	BOTANICAL / COMMON NAME	SIZE	METHOD	QTY
	CAL KAR	Calamagrostis x acutiflora 'Karl Foerster' Karl Foerster Feather Reed Grass	2 gal.	Container	15
	MIS AUT	Miscanthus purpurascens 'Autumn Red' Autumn Red Flame Grass	2 gal.	Container	6
GROUND COVERS	CODE	BOTANICAL / COMMON NAME	SIZE	METHOD	QTY
	ROCK	River Rock	2-5'	--	2,615 sf
	SOD	Turf Sod	--	--	5,871 sf

PL202200054
PL2022-54

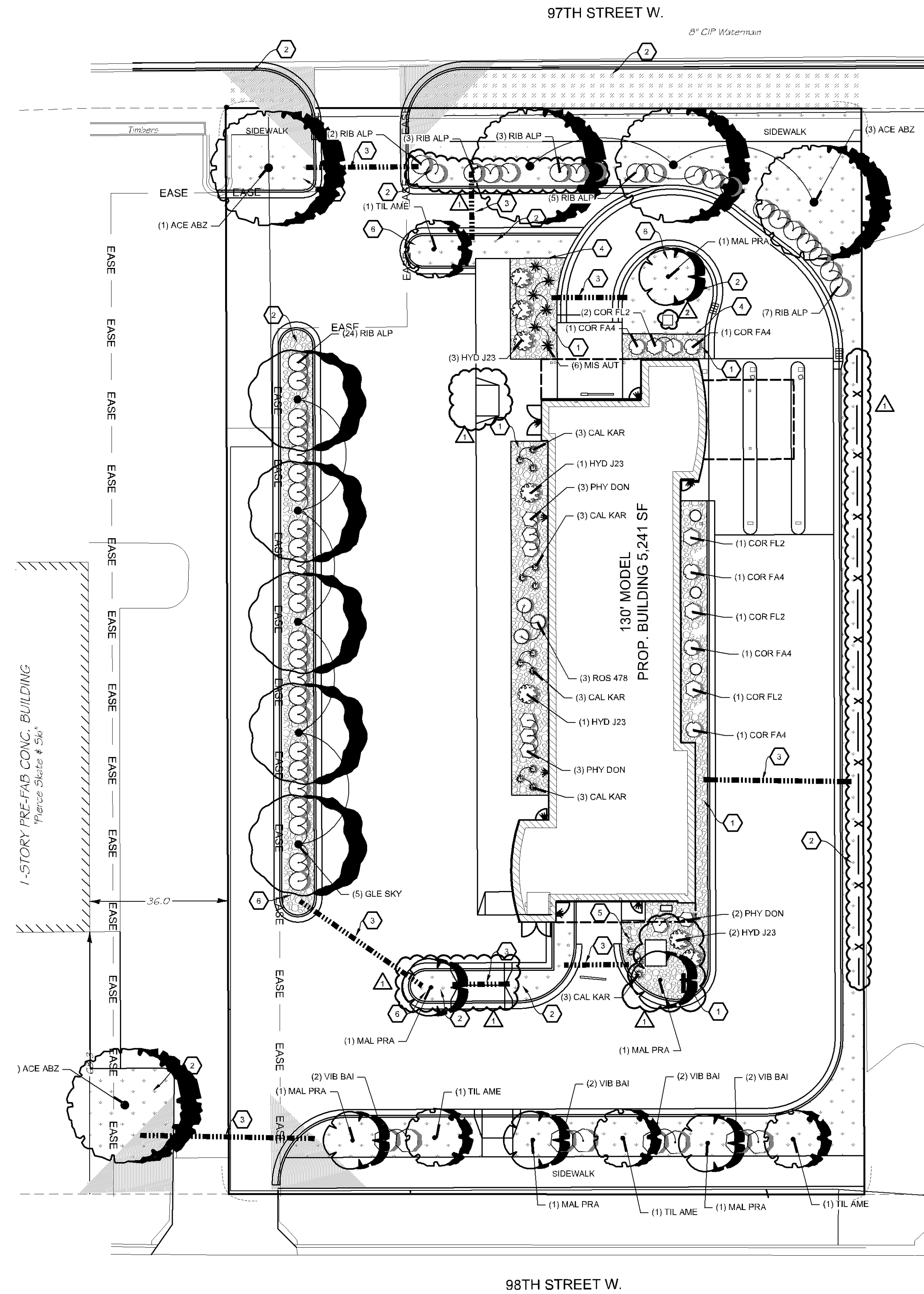
Plans approved
11/30/2022



Elaphoglossum 01/19/22

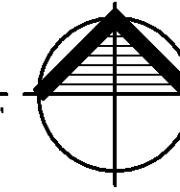
LANDSCAPING REQUIREMENTS

- ONE TREE PER 2,500 SQ FT OF DEVELOPABLE LANDSCAPING AREA
46,859 SQFT/2,500= 18.74
- 19 TREES REQUIRED
19 TREES PROVIDED
- ONE SHRUB PER 1,000 SQ FT OF DEVELOPABLE LANDSCAPING AREA
46,859 SQFT/1,000= 46.86
- 47 SHRUBS REQUIRED
72 SHRUBS PROVIDED
- UP TO 50% OF THE REQUIRED SHRUBS MAY BE PERENNIAL PLANTS.
- FOUR PERENNIAL PLANTS EQUAL ONE SHRUB.
(21 PERENNIALS / 4 = 5.25 SHRUBS)
- +5 ADDITIONAL SHRUBS
- NO MORE THAN ONE-HALF OF THE TREES TO BE PLANTED MAY BE FROM ANY ONE SPECIES.
NO MORE THAN 15% OF THE REQUIRED TREE INCHES MAY BE OF ORNAMENTAL SPECIES.



K6 LANDSCAPE PLAN

SCALE: 1\"/>



DATE:	96-27-2022
PROJECT NO:	21-070
DRAWN BY:	RK
CHECKED BY:	CM
REVISIONS:	
1	SEP 27, 2022
2	NOV 23, 2022
3	
4	
5	
6	
7	
8	
9	
10	
11	
12	
13	
14	
15	
16	

CAR WASH
200 W 98TH ST.
BLOOMINGTON, MN 55420

P3280



CHRISTIANSON COMPANIES

PH. (701) 281-9500
FAX (701) 281-9501

4609 33RD AVE. S.
SUITE 400
FARGO, ND 58104

DRG
DESIGN RESOURCES GROUP

PH. (701) 499-0212
FAX (701) 281-9501

SHEET DESCRIPTION:
LANDSCAPE PLAN

Sheet
L1.1