

All exterior doors that allow access to the interior of the building(s) shall be numbered in a sequential order starting with the main entrance (public entrance) as number 1 and continue in a clockwise manner.

Ensure landscaping doesn't interfere with access to the building, hydrants and/or FDC.

Provide an Environmental Health Plan Review application with plan submittal for each proposed food facility.

Fire alarm, annunciator panels and Knox box locations to be determined by the Fire Prevention Division.

Entire space to have a code compliant sprinkler system.

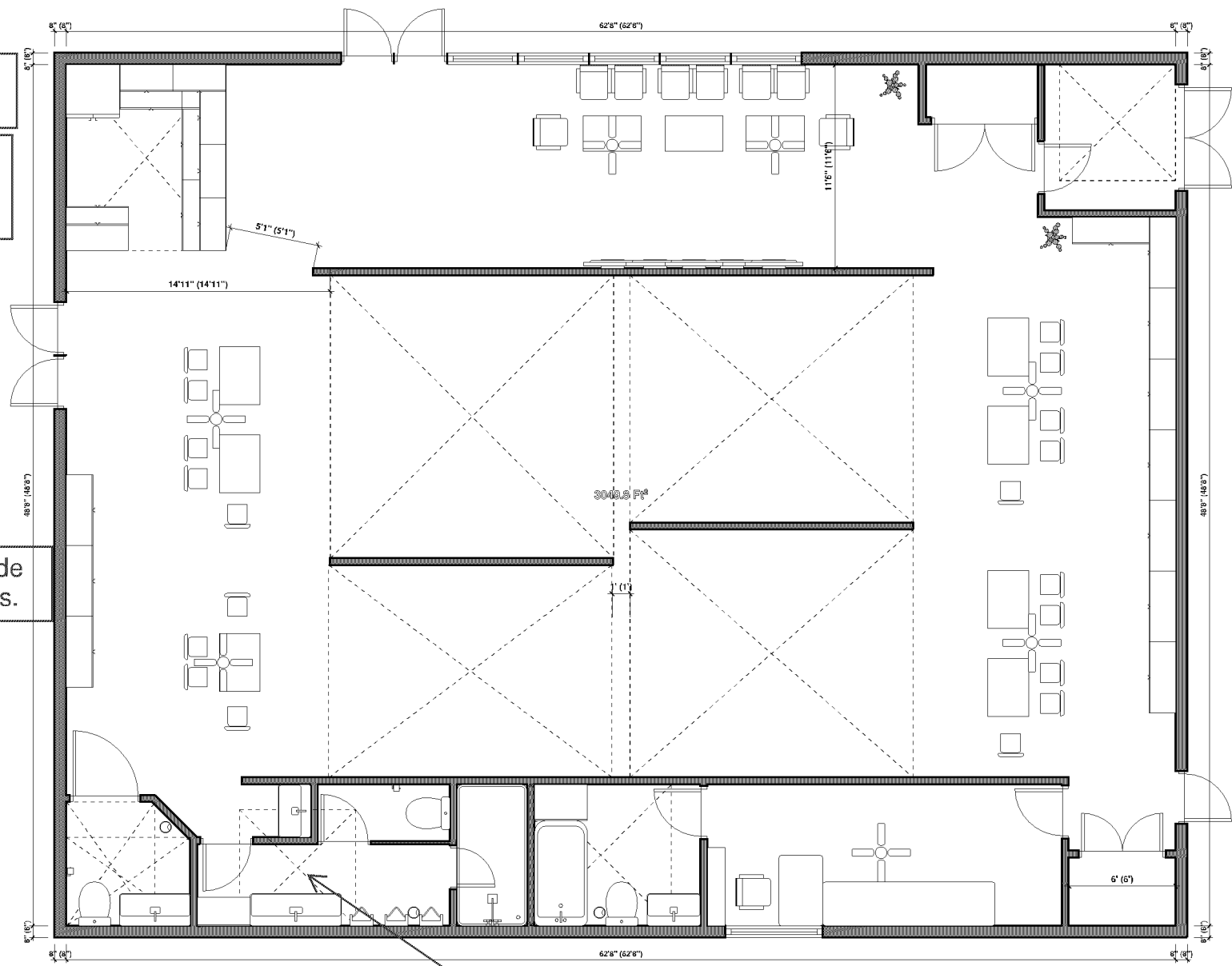
Must meet 2020 MN State Building Code

Building plans must be signed by a MN licensed architect.

SAC review by MET council will be required.

Must meet 2020 MN Accessibility Code.

Provide a detailed code analysis with the plans.



Provide specification sheets during plan submittal on all new and used equipment being proposed for use in this facility.

Must meet fixture count per Chapter 29 of 2020 MN Building Code.

Provide description of proposed food service operations. Provide location, equipment, menu and storage area locations and finishes.

Include plan for exterior, parking lot and circulation modifications in next submittal.