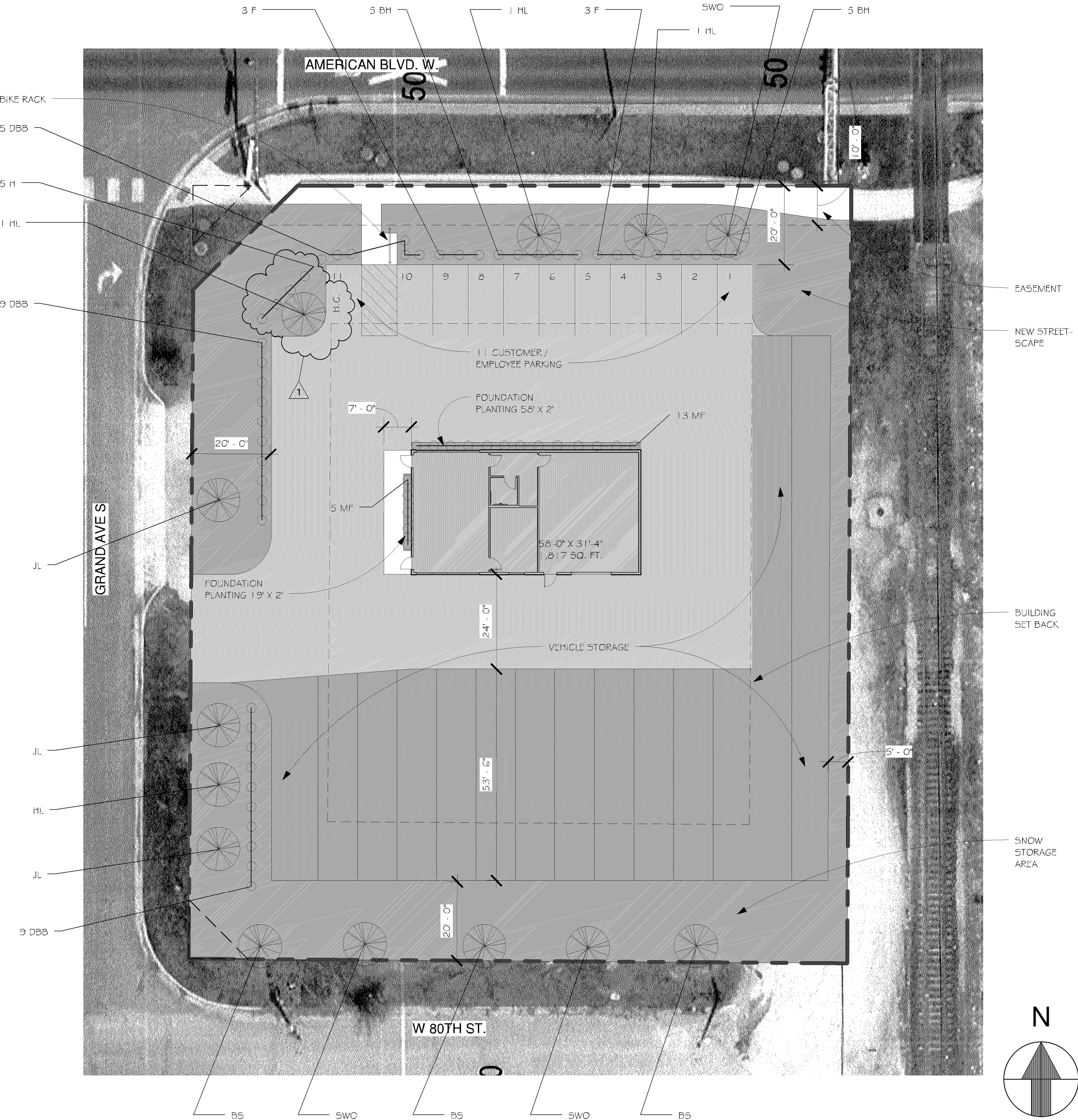


CASE FILE #PL201700125

APPROVED
ZONING REVIEW ONLY
NMJ 04/19/2018



7 SITE PLAN
1" = 20'-0"

PROPOSED LANDSCAPING:

DEVELOPMENT SITE AREA = 30,909 SQ. FT.
PER ORDINANCE: 1 TREE / 2,500 SQ. FT. = 13 TREES
1 SHRUB / 1,000 SQ. FT. = 31 SHRUB

| PLANT SCHEDULE | | | | |
|-----------------|-------------|-----------------|--------------|------------------------------|
| OVERSTORY TREES | | | | |
| QTY. | COMMON NAME | | BOTANIC NAME | SIZE |
| 3 | BS | BLACK SPRUCE | CONIFEROUS | Picea Mariana |
| 3 | SWO | SWAMP WHITE OAK | | Quercus Bicolor |
| 3 | JL | JAPANESE LILAC | ORNAMENTAL | Syringa Veticulata |
| 4 | HL | HONEY LOCOST | | Gleditsia Thacanthos Impenal |
| 13 | TOTAL TREES | | | |

| PLANT SCHEDULE | | | |
|---------------------|--------------|--------------------------|-----------------------------------|
| SHRUBS / PERENNIALS | | | |
| QTY. | COMMON NAME | | BOTANIC NAME |
| 23 | DBB | DWARF BURING BUSH | Evonymos Alatus |
| 10 | BH | BUSH-HONEY-SUCKLE, DWARF | Diervilla lonicera |
| 6 | F | FALSESPIREA | Sorbara sorbifolia 'Sem' |
| 5 | H | HYDRANGEA, ANNABELLE | Hydrangea arborescens 'Annabelle' |
| 18 | M/F | FERN, MAIDENHAIR | ADETUM PEDATUM |
| 44 | TOTAL SHRUBS | | |

Project Note: 13 Dwarf Burning Bush were replaced with 13 Black Chokeberry by Hill Street Outdoor Services in October of 2023 in addition to other landscape material on site that was removed or did not survive. Note submitted by Nick Johnson, Senior Planner, on 9/29/23.

ARCHNET

usa

architecture • interiors
sustainable design

333 N Main St. Ste. 201
Stillwater, MN 55082
651-430-0606
archnetusa.com

BUDGET / AVIS

350 AMERICAN BLVD. W.
BLOOMINGTON, MN

| Revisions | | |
|-----------|--------------------|--------|
| Item | | Date |
| 1 | CITY PLANING COMM. | 4-5-18 |
| | | |
| | | |
| | | |
| | | |
| | | |
| | | |
| | | |
| | | |
| | | |

Registration Information

I hereby certify that this plan, specification, or report was prepared by me or under my direct supervision, and that I am a duly Licensed Architect under the laws of the State of Minnesota

Printed Name
BETH F. DIEM

Signature
Beth F. Diem

Date
4-5-18

License #
22903

Sheet Information

SITE / LANDSCAPING PLAN

Project No : 17-102 Drawing No :

Sheet Size : 24" x 36"

Drawn By : CAL

Checked By : RT

Date : 4-5-18

AS1

©2018 ARCHNET, Inc.

PLANTING BED PREPARATION:
ALL MASS PLANTING BEDS SHALL BE TILLED TO A MINIMUM DEPTH OF TEN INCHES.

FERTILIZATION:
ALL PLANT MATERIALS SHALL BE FERTILIZED UPON INSTALLATION WITH THE FOLLOWING TYPES AND QUANTITIES OF FERTILIZER MIXED IN WITH THE PLANTING SOIL PER THE MANUFACTURER'S INSTRUCTIONS.

SPRING PLANTING: APPLY 10-10-10 GRANULAR FERTILIZER AT THE RATE OF TWELVE OUNCES PER TWO TO THREE INCH CALIPER TREE, AND SIZE OUNCES PER SHRUB.

SUMMER AND FALL PLANTING (BEFORE WINTER FREEZE UP): APPLY 0-20-20 GRANULAR FERTILIZER AT THE RATE OF TWELVE OUNCES PER TWO TO THREE INCH CALIPER TREE, AND SIX OUNCES PER SHRUB.

BACKFILL SOIL:
USE SOIL EXCAVATED FROM PLANTING HOLES AND THOROUGHLY MIX IN AMENDMENTS. SOIL AMENDMENTS SHALL INCLUDE 1/3 PEAT Moss TO 2/3 EXCAVATED SOIL FOR ALL PLANTING SOIL IN ADDITION, DRIED BONE MEAL FOR ALL PERENNIAL LOCATIONS. REMOVE ALL DEBRIS INCLUDING ROCKS LARGER THAN THREE INCH DIAMETER.

EDGING:
EDGING SHALL BE A MINIMUM OF A FOUR INCH TALL PVC COMMERCIAL GRADE EDGING, INSTALLED WITH THREE METAL ANCHOR STAKES PER TWENTY FOOT SECTION. ALL MASS PLANTING BEDS SHALL HAVE EDGING PLACED BETWEEN MULCH AREA AND ANY ADJACENT TURF AREAS, UNLESS SPECIFICALLY NOTED ON THE LANDSCAPE PLANS.

WEED BARRIERS:
AFTER THE SURFACE OF THE GROUND HAS BEEN RAKED SMOOTH, A FIBERMAT WEED BARRIER SHALL BE PLACED IN ALL PLANTING BEDS, EXCEPT WHERE PERENNIALS HAVE BEEN MASS PLANTED. THE WEED BARRIER SHALL BE LANDSCAPE FABRIC WITH A WEIGHT OF 4.5 TO 5.5 OUNCES PER SQUARE YARD. FABRIC SHALL BE ULTRA-VIOLET LIGHT STABILIZED AND HAVE A MINIMUM FIVE YEAR WEATHERABILITY FACTOR IN FULL SUNLIGHT. A SAMPLE WITH MANUFACTURER'S SPECIFICATIONS MUST BE SUBMITTED TO THE LANDSCAPE ARCHITECT FOR REVIEW AND APPROVAL PRIOR TO INSTALLATION.

ROCK MULCH:
ALL PLANTING BEDS TO RECEIVE A THREE INCH MINIMUM DEPTH OF 1 1/2" TO 2" CRUSHED LIMESTONE ROCK. AFTER WEED BARRIER HAS BEEN SET IN PLACE, ROCK COLOR TO BE APPROVED BY ARCHITECT PRIOR TO INSTALLATION.

TREE STAKING:
IT IS THE LANDSCAPE CONTRACTOR'S RESPONSIBILITY TO TAKE EVERY STEP NECESSARY TO MAINTAIN THE TREES AND SHRUBS IN AN UPRIGHT AND PLUMB CONDITION AT ALL TIMES UNTIL THE END OF THE PLANT GUARANTEE PERIOD, ESPECIALLY WHERE VANDALISM, SOIL OR WIND CONDITIONS ARE A PROBLEM. IF THE LANDSCAPE CONTRACTOR PERCEIVES THAT PROBLEMS COULD OCCUR, IT SHALL BE THE LANDSCAPE CONTRACTOR'S RESPONSIBILITY TO STAKE AND/OR GUY THE TREES ACCORDING TO THE DETAILS.

TREE WRAPPING:
WRAPPING MATERIAL SHALL BE QUALITY, HEAVY, WATERPROOF CREPE PAPER MANUFACTURED FOR THIS PURPOSE. ALL DECIDUOUS TREES PLANTED IN THE FALL SHALL BE WRAPPED AFTER NOVEMBER 1ST AND PRIOR TO DECEMBER 1ST OF EACH YEAR. REMOVE ALL WRAPPING AFTER APRIL 1ST AND PRIOR TO JUNE 1ST OF EACH YEAR.

RODENT PROTECTION:
PROVIDE ON ALL TREES EXCEPT CONIFERS UNLESS OTHERWISE SPECIFIED ON PLANS.

1. REPLACE CONSTRUCTED / DISTURBED AREAS WITH NEW SUBGRADE AND SOO WHERE NEW CONSTRUCTION OCCURS AND EXISTING LANDSCAPING HAS BEEN DISTURBED.
2. SPRING PLANTING PREFERRED.
3. ANY EXISTING VEGETATION TO BE REMOVED FROM THE SITE SHALL BE DISPOSED OF IN A MANNER THAT IS APPLICABLE WITH LOCAL AND STATE REQUIREMENTS.
4. SEE ENGINEERS GRADING AND UTILITY PLANS FOR EXACT LOCATIONS OF BERMIS, FENCE, RETAINING WALLS, AND PIPE LOCATIONS.
5. NOTE: MAINTAIN 3" OR BETWEEN ALL PLANTINGS AND PUBLIC R.O.W. / PROPERTY LINES.
6. TOPSOIL MUST BE TURNED OVER AFTER GRASS PERMIT, WITH SOO OR SEEDING AND STRAW MULCH, DISK.
7. CONTRACTOR SHALL PROVIDE A MINIMUM FOUR INCH DEPTH OF TOPSOIL TO ALL AREAS DISTURBED, TO BE SOODED OR SEEDED.
8. TOPSOIL SHALL CONTAIN NO MORE THAN 35% SAND CONTENT

SITE CONDITIONS:

1. IF THE LANDSCAPE CONTRACTOR PERCEIVES ANY DEFICIENCIES IN THE PLANT SELECTIONS, SOIL CONDITIONS, OR ANY OTHER SITE CONDITION WHICH MIGHT NEGATIVELY AFFECT PLANT MATERIAL ESTABLISHMENT, SURVIVAL OR GUARANTEE, THEY SHALL BRING THESE DEFICIENCIES TO THE ATTENTION OF THE ARCHITECT IN WRITING PRIOR TO INSTALLATION.
2. AFTER ALL UTILITIES HAVE BEEN LOCATED AND PROPOSED PLANT MATERIAL LOCATIONS STAKED, ALL OF THE PROPOSED PLANT MATERIAL LOCATIONS MUST BE REVIEWED AND APPROVED BY THE ARCHITECT PRIOR TO ANY EXCAVATION.
3. ADJUSTMENTS IN LOCATION OF PROPOSED PLANT MATERIALS MAY BE NEEDED IN THE FIELD. THE ARCHITECT MUST BE NOTIFIED SHOULD ANY ADJUSTMENT BE ADVISED.
4. NO PLANTING TO BE INSTALLED UNTIL GRADING AND CONSTRUCTION HAS BEEN COMPLETED IN THE IMMEDIATE AREA.

WORKMANSHIP:

1. PRECEDENTS - PLAN TAKES PRECEDENCE OVER LANDSCAPE MATERIAL SCHEDULE IF DISCREPANCIES IN QUANTITIES EXIST. SPECIFICATIONS TAKE PRECEDENCE OVER NOTES.
2. PLACEMENT - ALL PROPOSED PLANTS SHALL BE LOCATED CAREFULLY AS SHOWN ON THE LANDSCAPE PLANS. RESPECT STATED DIMENSIONS. DO NOT SCALE DRAWINGS.
3. PRECISE POSITIONING - ALL PLANTS TO BE INSTALLED AS PER PLANTING DETAILS. SHRUB SPACING OF 5'-0" OR LESS SHALL BE MASS EXCAVATED AND/OR CULTIVATED BY TILLING. PLANT IN STAGGERED ROWS ON THE PERIMETER. THEN, UNIFORMLY FILL IN WITH REMAINING QUANTITY USING TRIANGULAR SPACING. PROVIDE A FIVE FOOT RADIUS AREA CLEAR OF SHRUBS AROUND EACH DECIDUOUS TREE AND AN EIGHT FOOT RADIUS CLEAR AREA AROUND EACH CONIFEROUS TREE. PLANTING BEDS SHALL BE MASS MULCHED.
4. IDENTIFICATION - ONE SHRUB PER TYPE AND SIZE IN PLANTING BED AND EVERY TYPE OF TREE SHALL BE CLEARLY IDENTIFIED (COMMON OR LATIN NOMENCLATURE) WITH A PLASTIC TAG WHICH SHALL NOT BE REMOVED PRIOR TO OWNER ACCEPTANCE.

TURF ESTABLISHMENT:

1. THE FINISHED GRADE OF 500 OR SEED AREAS SHALL BE HELD TO ONE INCH BELOW SURFACE ELEVATION OF TRAIL, SLAB, CURB, OR DRIVE, WHERE 500 OR SEED AREAS ADJACENT TO TRAIL, SLAB, CURB, OR DRIVE.
2. 500 SHALL BE LAID PARALLEL TO THE CONTOURS AND SHALL HAVE STAGGERED JOINTS. 500 SHALL BE STAKED TO THE GROUND ON SLOPES STEEPER THAN 3:1 OR IN DRAINAGE SWALES.
3. REPAIR ALL DAMAGE TO PROPERTY FROM PLANTING OPERATIONS AT NO COST TO THE OWNER.

Diagram illustrating the cross-section of a tree pit, showing the following layers and specifications:

- DECIDUOUS SHRUBS SHALL HAVE A MINIMUM OF FIVE CANES AT SPECIFIED HEIGHT UNLESS OTHERWISE SPECIFIED ON LANDSCAPE MATERIAL SCHEDULE.
- LIMESTONE (REFER TO SPECIFICATION)
- EDGING (REFER TO SPECIFICATION)
- REFER TO LANDSCAPE PLAN FOR GROUND COVER.
- TOPSOIL
- UNDISTURBED OR COMPACTED SUBGRADE.
- LANDSCAPE FABRIC (REFER TO SPECIFICATION)
- PLANTING SOIL (REFER TO SPECIFICATION)
- BOTTOM OF SHRUB TO SIT ON SUBGRADE.

[illegible]

©2018 ARCHNET, Inc.

SHREDDED HARDWOOD MULCH:
 ALL PLANTING BEDS TO RECEIVE A THREE INCH MINIMUM DEPTH OF SHREDDED HARDWOOD MULCH, AFTER WEED BARRIER HAS BEEN SET IN PLACE. ALL INDIVIDUALLY PLANTED DECIDUOUS AND CONIFEROUS TREES RECEIVE A 3'-4" DEPTH OF SHREDDED HARDWOOD MULCH WITH NO MULCH IN DIRECT CONTACT WITH TREE TRUNK.

REMOVE ALL DEAD GROWTH AND RETAIN FROM REMOVAL OF UP TO 1/3 OF THE BRANCHING STRUCTURE IS ACCEPTABLE.

16' POLYPROPYLENE OR POLYETHYLENE STRAP (40 MIL. (TYP.))

WRAP TREE TO FIRST BRANCH (BEGINNING AT BOTTOM).

DOUBLE STRAND 14 GA. GALVANIZED WIRE WITH TURN BUCKLE.

FLAGGING (ONE PER WIRE)

RIVER ROCK (REFER TO SPECIFICATION)

PLANTING SOIL (REFER TO SPECIFICATION)

50D

TOPSOIL

2'-0" (MIN.)

6'-0" HIGH STEEL STAKE

18"

2"x2"x24" WOOD STAKE, SET AT ANGLE.

UNDISTURBED OR COMPACTED SUBGRADE.

ROLL BACK TOP 1/3 OF BURLAP ON ROOT BALL.

TOP OF ROOT BALL TO BE 1' ABOVE SURROUNDING GRADE. CUT ROPE FOR BURLAP LOCATED AT TOP OF ROOT BALL.

BOTTOM OF ROOT BALL TO SIT ON SUBGRADE.

THE TOP RUNGS OF ANY WIRE BASKET AROUND THE ROOT BALL SHOULD BE REMOVED BEFORE BACK-FILLING THE PLANTING HOLE.

Diagram illustrating the planting method for a tree, showing the root ball, surrounding soil, and various stakes and wires used for support and protection.

Labels and dimensions:

- VARIES (vertical dimension on the left)
- 8'-0" HIGH STEEL STAKE
- DOUBLE STRAND 1/4 GA. GALVANIZED WIRE WITH TURN BUCKLE.
- 1/6" x 1-1/4" POLYPROPYLENE OR POLYETHYLENE STRAP (40 MIL.) (TYP.)
- FLAGGING (ONE PER WIRE)
- 6" DEPTH LIMESTONE (REFER TO SPECIFICATION)
- PLANTING SOIL (REFER TO SPECIFICATION)
- SOD
- TOPSOIL
- 2"x2"x24" WOOD STAKE.. SET AT ANGLE.
- UNDISTURBED OR COMPACTED SUBGRADE.
- ROLL BACK TOP 1/3 OF BURLAP ON ROOT BALL.
- TOP OF ROOT BALL TO BE 1" ABOVE SURROUNDING GRADE. CUT ROPE FOR BURLAP LOCATED AT TOP OF ROOT BALL.
- BOTTOM OF ROOT BALL TO SIT ON SUBGRADE.
- THE TOP RINGS OF ANY WIRE BASKET AROUND THE ROOT BALL SHOULD BE REMOVED BEFORE BACK-FILLING THE PLANTING HOLE.
- 18" (horizontal dimension across the root ball)
- 2'-0" (MIN.) (vertical dimension of the root ball)

**333 N Main St. Ste. 201
Stillwater, MN 55082
651-430-0606
archnetusa.com**

350 AMERICAN BLVD. W.
BLOOMINGTON, MN

[illegible]

I hereby certify that this plan,
specification, or report was prepared by
me or under my direct supervision, and
that I am a duly Licensed Architect
under the laws of the State of
Minnesota

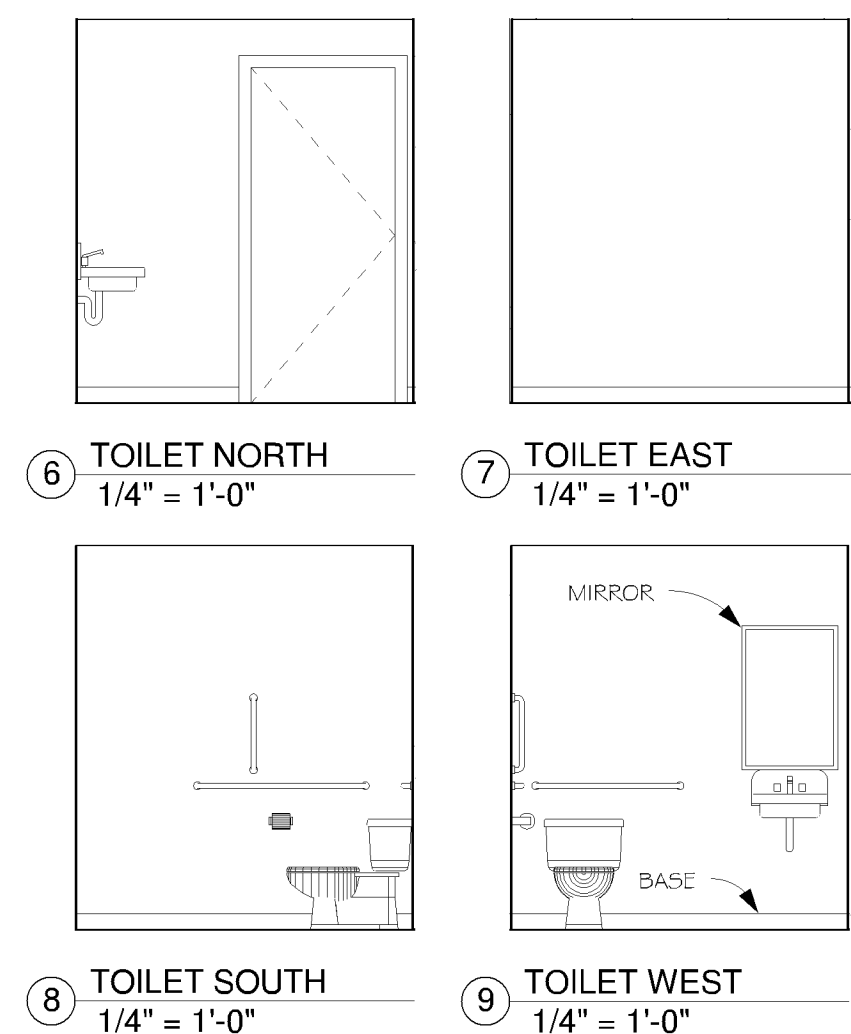
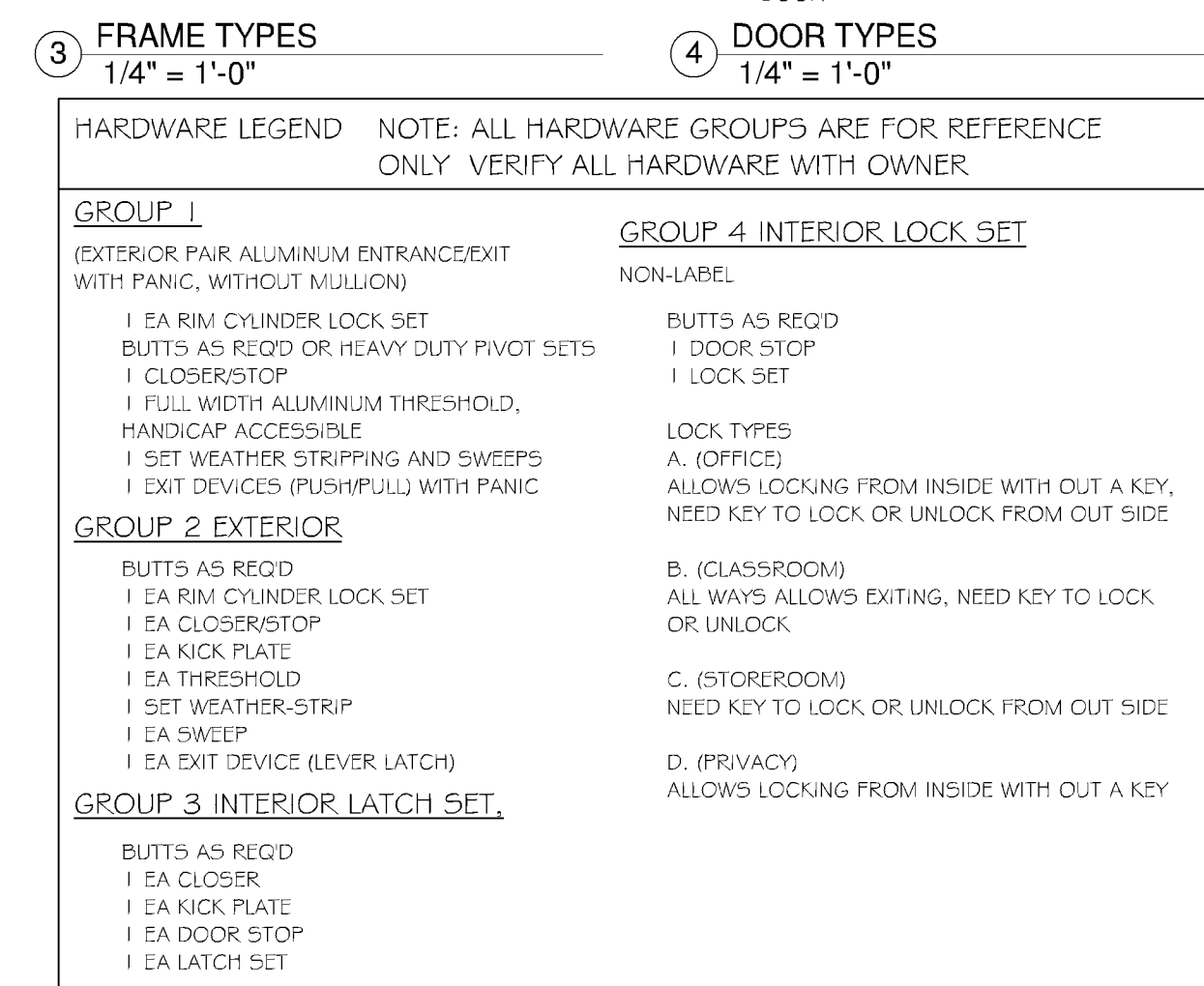
Signature

4-5-18 22903

| | |
|------------------------|--------------|
| Project No : 17-102 | Drawing No : |
| Sheet Size : 24" x 36" | |
| Drawn By : CAL | A1.0 |
| Checked By : RT | |
| Date : 4-5-18 | |

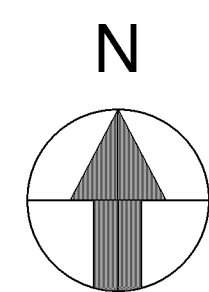
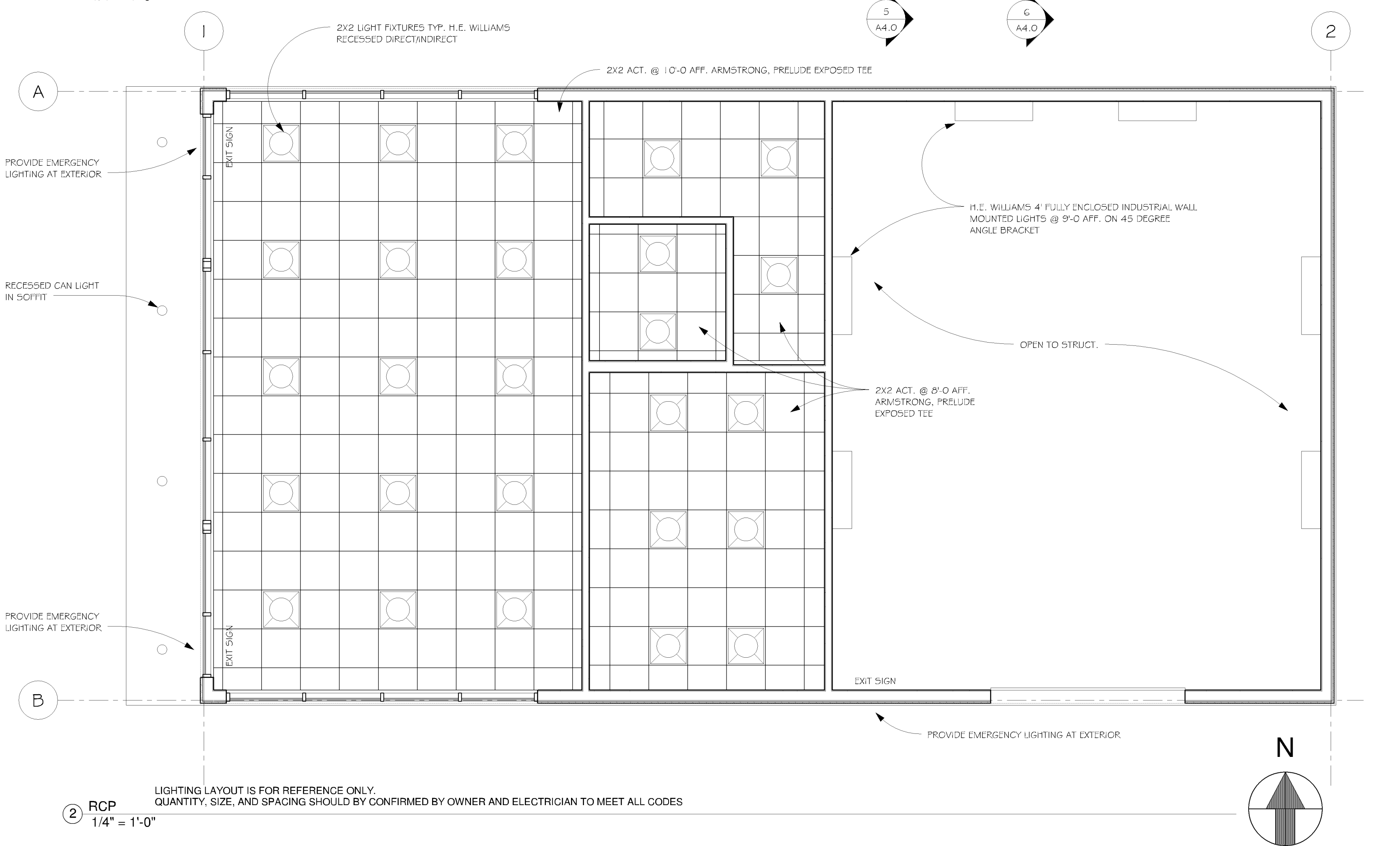
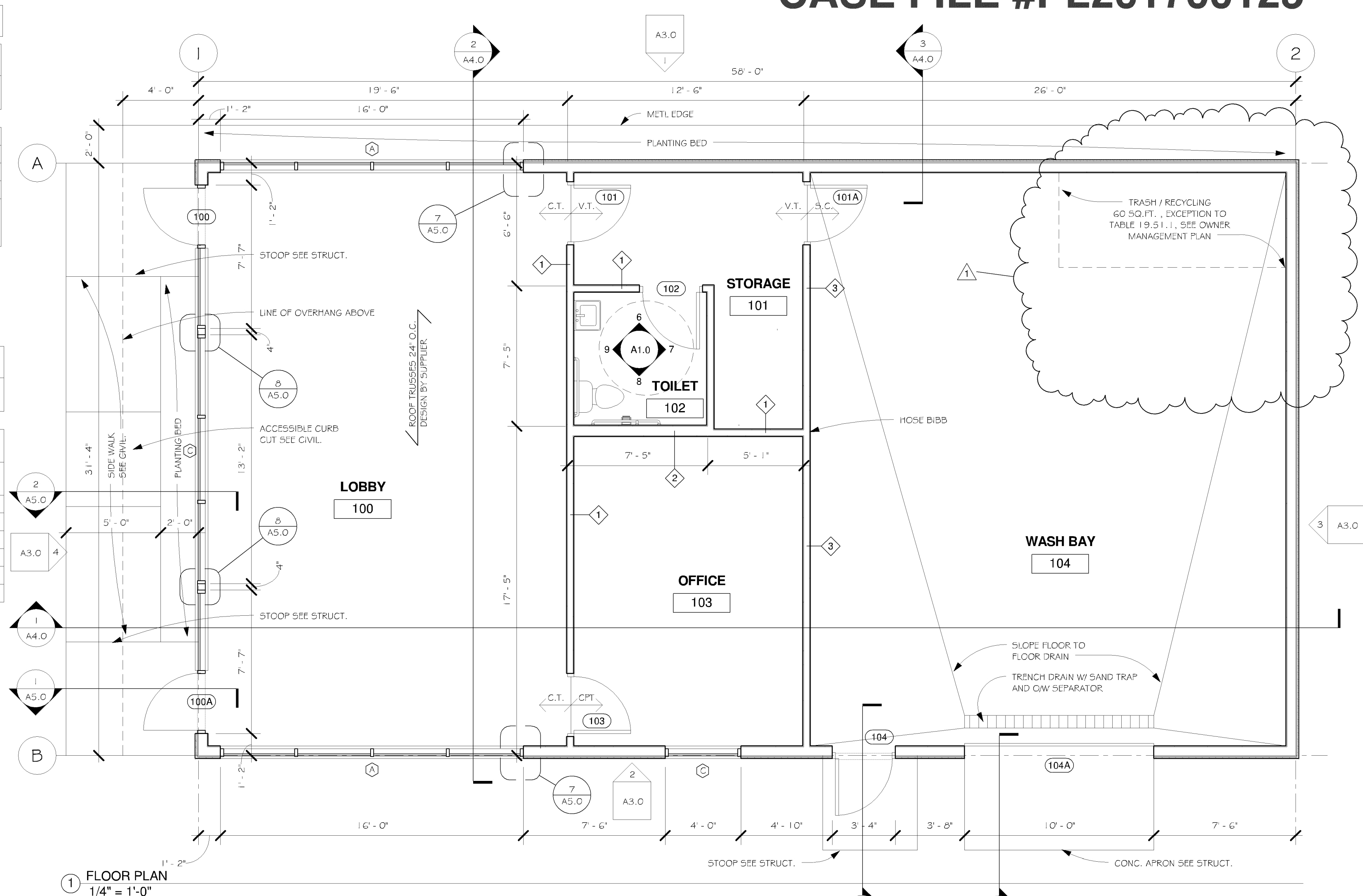
©2018 ARCHNET, Inc.

| DOOR SCHEDULE | | | | | | | |
|---------------|-----------------|----------|----------|-----------|------------|------------|---------------------------------|
| DOOR # | FROM ROOM: NAME | HEIGHT | WIDTH | DOOR TYPE | FRAME TYPE | HDWR GROUP | COMMENTS |
| 100 | LOBBY | 7' - 0" | 3' - 0" | A | F1 | I | IN STOREFRONT TYPE C SEE 6/A3.0 |
| 100A | LOBBY | 7' - 0" | 3' - 0" | A | F1 | I | IN STOREFRONTTYPE C SEE 6/A3.0 |
| 101 | STORAGE | 7' - 0" | 3' - 0" | C | F2 | 3 | |
| 101A | STORAGE | 7' - 0" | 3' - 0" | C | F2 | 3 | |
| 102 | TOILET | 7' - 0" | 3' - 0" | C | F2 | 4D | |
| 103 | OFFICE | 7' - 0" | 3' - 0" | C | F2 | 4A | |
| 104 | WASH BAY | 7' - 0" | 3' - 0" | B | F2 | 2 | |
| 104A | WASH BAY | 10' - 0" | 10' - 0" | D | - | - | |



TOILETS ROOM NOTES:

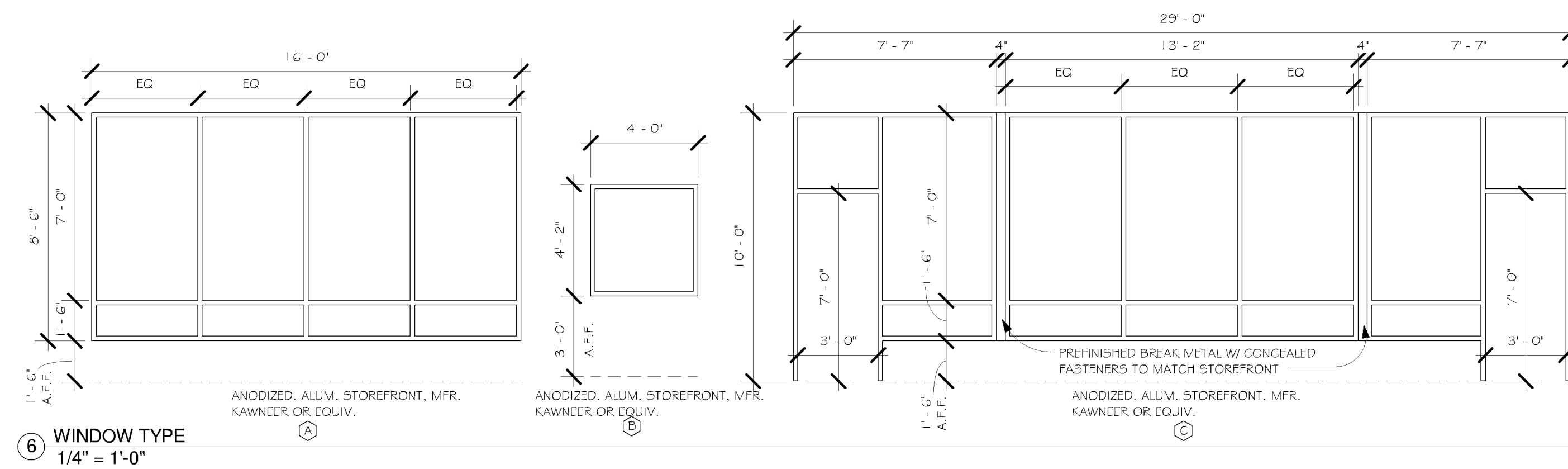
1. SEE SHEET A6.0 FOR ADA INFO, MOUNTING HEIGHTS @ GRAB BAR LOCATIONS.
2. PROVIDE CONCEALED BLOCKING FOR ALL MOUNTED ITEMS WHERE APPLICABLE.
3. VERIFY ALL FIXTURE TYPES WITH OWNER



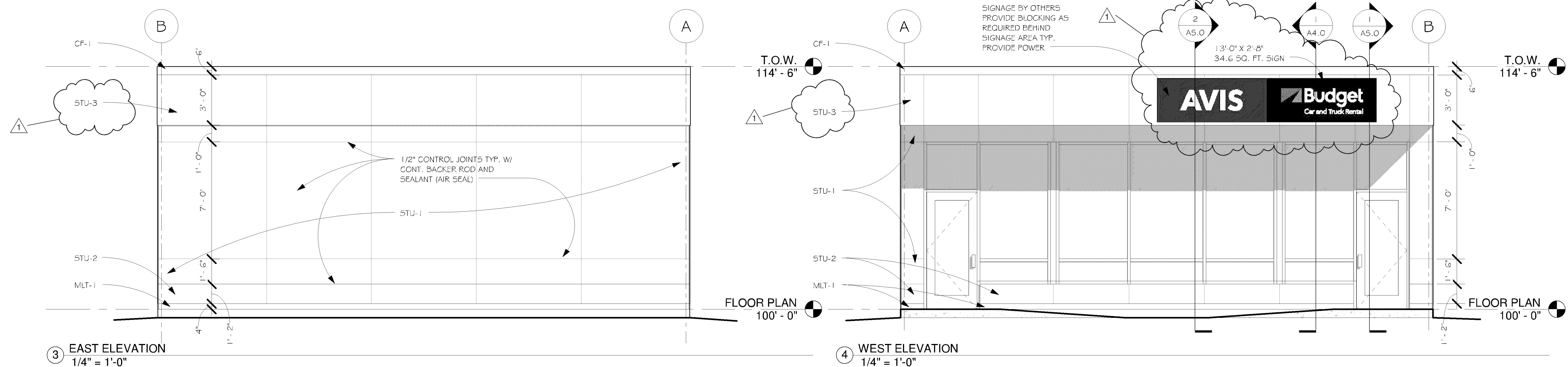
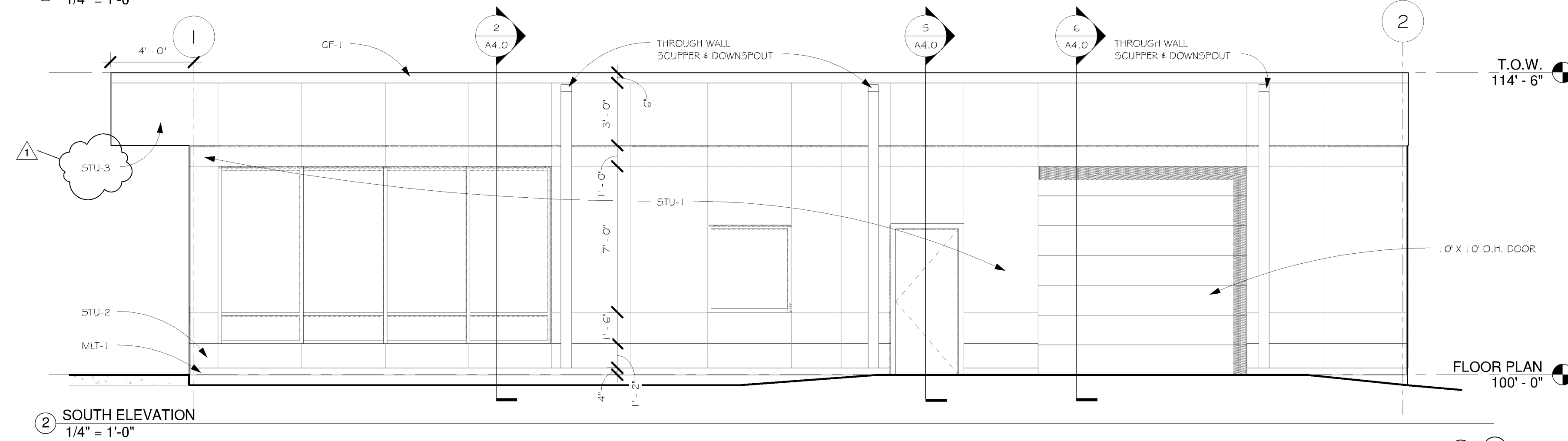
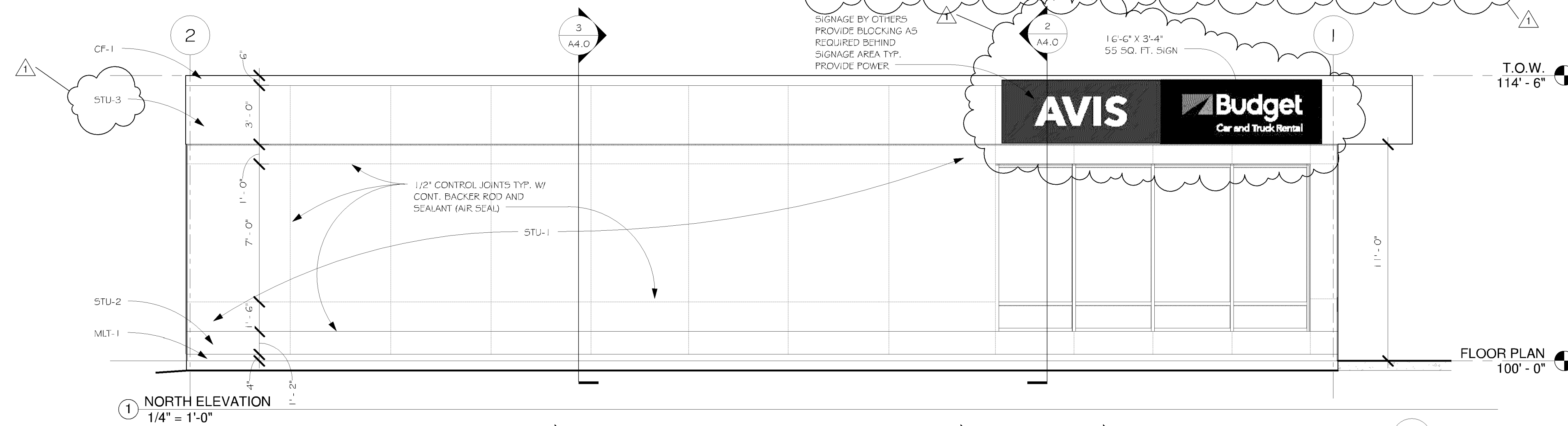
APPROVED
ZONING REVIEW ONLY
NMJ 05/31/2018

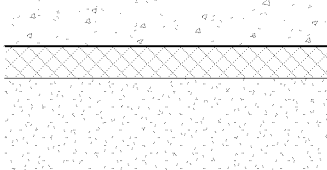
| STOREFRONT LEGEND | |
|-------------------|---|
| 6 | 1" CLEAR LOW-E DOUBLE PANE GLASS U-VALUE 0.4 |
| TG | 1" CLEAR LOW-E DOUBLE PANE TEMPERED GLASS U-VALUE 0.4 |
| BM | BREAK METAL FINISH WITH FRAME - CLEAR ANODIZED |

| STOREFRONT NOTE: |
|--|
| 1. STOREFRONT MANUFACTURER RESPONSIBLE FOR CALCULATING AND PROVIDING THE NECESSARY REQUIREMENT FOR WIND LOADS ON THEIR PRODUCT |
| 2. PROVIDE HAIL DEFLECTION AS REQ'D CONSULT W/ STRUCT. |



| EXTERIOR FINISH SCHEDULE | | | | | |
|--|--------------------------|--------------|---------------------------|--|-------------------------------------|
| SUBMIT ALL COLOR SAMPLES TO OWNER FOR APPROVAL PRIOR TO CONSTRUCTION | | | | | |
| CODE | MATERIAL | MANUFACTURER | DESCRIPTION | | REMARKS |
| | | | PRODUCT | COLOR / FINISH | |
| STU-1 | 3 COAT STUCCO SYSTEM | - | SELF FURRING DIAMOND MESH | COLOR TO MATCH SHERWIN WILLIAMS PAINT / SW 7072 ONLINE (MEDIUM GRAY) | PORTLAND CEMENT WITH INTEGRAL COLOR |
| STU-2 | 3 COAT STUCCO SYSTEM | - | SELF FURRING DIAMOND MESH | COLOR TO MATCH SHERWIN WILLIAMS PAINT / SW 7075 WEG GRAY (DARK GRAY) | PORTLAND CEMENT WITH INTEGRAL COLOR |
| STU-3 | 3 COAT STUCCO SYSTEM | - | SELF FURRING DIAMOND MESH | COLOR TO MATCH SHERWIN WILLIAMS PAINT / SW 7064 PASSIVE (LIGHT GRAY) | PORTLAND CEMENT WITH INTEGRAL COLOR |
| MLT-1 | PREFINISHED METAL | - | - | COLOR TO MATCH SHERWIN WILLIAMS PAINT / SW 7075 WEG GRAY (DARK GRAY) | - |
| CF-1 | PREFINISHED CAP FLASHING | - | - | COLOR TO MATCH SHERWIN WILLIAMS PAINT / SW 7064 PASSIVE (LIGHT GRAY) | - |

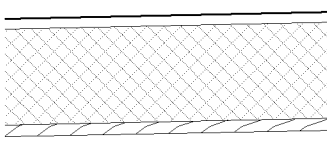




4" CONC. SLAB
 2" RIGID INSUL. TO EXTEND 2" UNDER
 SLAB AROUND BUILDING PERIMETER
 6" COMPACTED SAND MIN.

F1

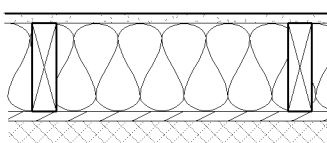
TYP. FLOOR CONST.



ROOF MEMBRANE
 RIGID INSUL. 30 R-VALUE MIN.
 SHEATHING (SEE STRUCT.)
 WO. TRUSS SLOPE TOP CHORD @ 1/4" / FT. MIN.

R1

TYP. ROOF CONST.



5/8" GYP. BD.
 BATT INSUL. R-21
 2x6 WD. STUDS @ 16" O.C.
 1/2" INSULATED GYP WALL SHEATHING R-3.6 (SEE STRUCT.) W/
 INTEGRAL WRB - WATER RESISTANT BARRIER
 3/8" DRAINAGE MAT
 DOUBLE D BUILDING PAPER
 3 COAT STUCCO SYSTEM (MESH - BASE COAT - FINISH COAT)
 WALL CONST.

W1

7

EXTERIOR WALL TYPES
 1" = 1'-0"

[illegible]

Registration Information

I hereby certify that this plan,
specification, or report was prepared by
me or under my direct supervision, and
that I am a duly Licensed Architect
under the laws of the State of
Minnesota

Printed Name
BETH F. DIEM

Signature

| | |
|--------|-----------|
| DATE | License # |
| 4-5-18 | 22903 |

Sheet Information

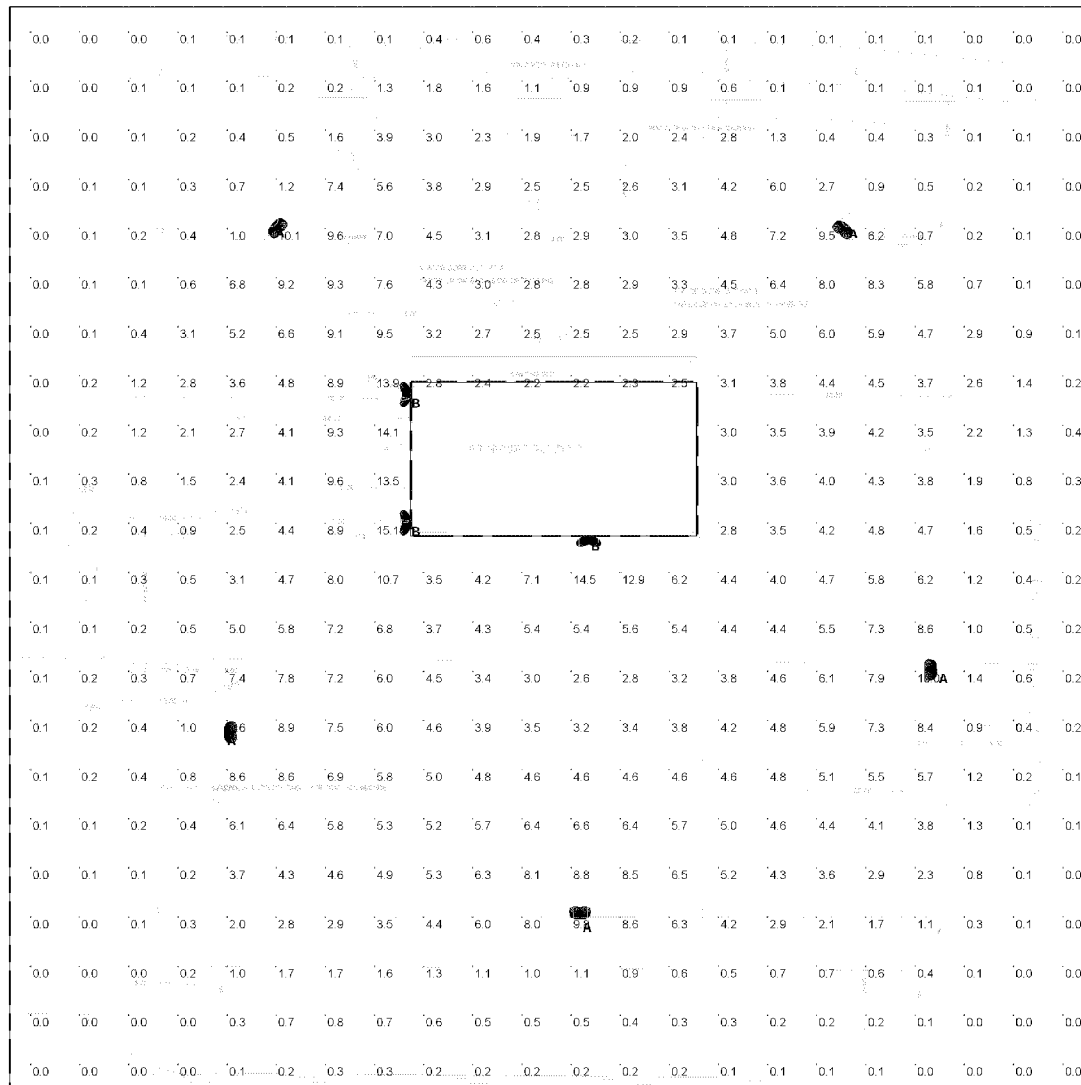
ELEVATIONS

Project No : 17-102 Drawing No :
 Sheet Size : 24" x 36"
 Drawn By : CAL
 Checked By : RT
 Date : 4-5-18

©2018 ARCHNET, Inc.

A3.0

CASE FILE #PL201700125



Plan View

SCS Electric LLC
3808 Tonkawood Rd
Minnetonka, MN 55345

EA 740799

Note

Type A fixtures at 20'
Type B fixtures at West elevation at 10'
Type B at South elevation at 8'

LIGHTING PLAN APPROVED



NMJ
05/31/2018

Statistics

| Description | Symbol | Avg | Max | Min |
|--------------|--------|--------|---------|--------|
| Calc Zone #1 | + | 2.7 fc | 15.1 fc | 0.0 fc |

Schedule

| Symbol | Label | Qty | Manufacturer | Catalog Number | Description | Lumens Per Lamp | LLF | Wattage |
|--------|-------|-----|----------------|---------------------------|--|-----------------|-----|----------|
| ○ | A | 5 | PHILIPS GARDCO | ECF-L-80L-900-NW-G2-4-HIS | EcoForm Area LED ECF - Large, 80 LED's, 4000K CCT, TYPE 4-HIS OPTIC, House-side Internal Shielding | 22386 | 1 | 224.8768 |
| ○ | B | 3 | PHILIPS GARDCO | PWS-48L-400-NW-G2-3 | Pureform LDGN Sconce (PWS), 42 LED's, 4000K CCT, TYPE 3 OPTIC, | 7836 | 1 | 61.3 |

TSR

Avis
Initial

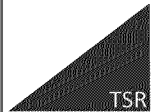
Designer

Date
4/24/2018

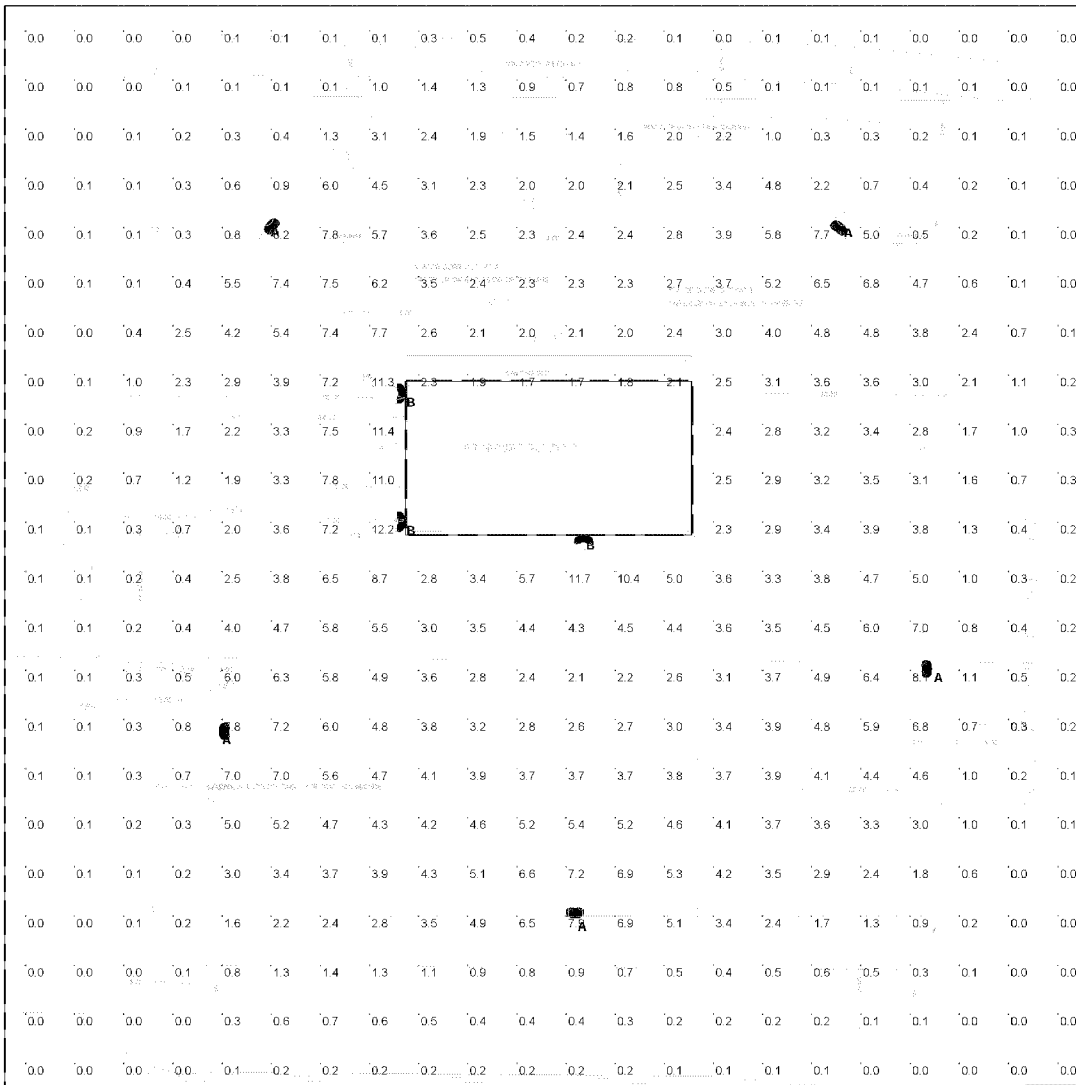
Scale
Not to Scale
Drawing No.

Summary

CASE FILE #PL201700125



Avis
Maintained



Plan View

SCS Electric LLC
3808 Tonkawood Rd
Minnetonka, MN 55345

EA 740799

LIGHTING PLAN APPROVED



NMJ
05/31/2018

Note

Type A fixtures at 20'
Type B fixtures at West elevation at 10'
Type B at South elevation at 8'

| Statistics | | | | |
|--------------|--------|--------|---------|--------|
| Description | Symbol | Avg | Max | Min |
| Calc Zone #1 | + | 2.2 fc | 12.2 fc | 0.0 fc |

| Schedule | | | | | | | | |
|----------|-------|-----|----------------|---------------------------|--|-----------------|------|----------|
| Symbol | Label | Qty | Manufacturer | Catalog Number | Description | Lumens Per Lamp | LLF | Wattage |
| ○ | A | 5 | PHILIPS GARDCO | ECF-L-80L-900-NW-G2-4-HIS | EcoForm Area LED ECF - Large, 80 LED's, 4000K CCT, TYPE 4-HIS OPTIC, House-side Internal Shielding | 22386 | 0.81 | 224.8768 |
| ○ | B | 3 | PHILIPS GARDCO | PWS-48L-400-NW-G2-3 | Pureform LDGN Sconce (PWS), 42 LED's, 4000K CCT, TYPE 3 OPTIC, | 7836 | 0.81 | 61.3 |

Designer

Date
4/24/2018
Scale
Not to Scale
Drawing No.

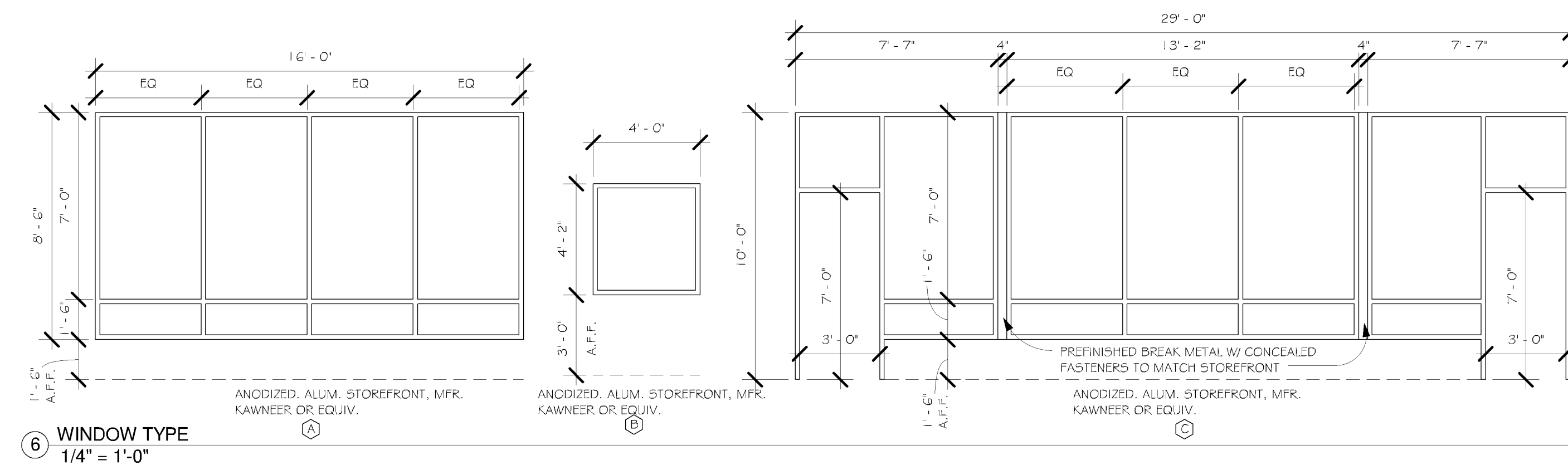
Summary

CASE FILE #PL201700125

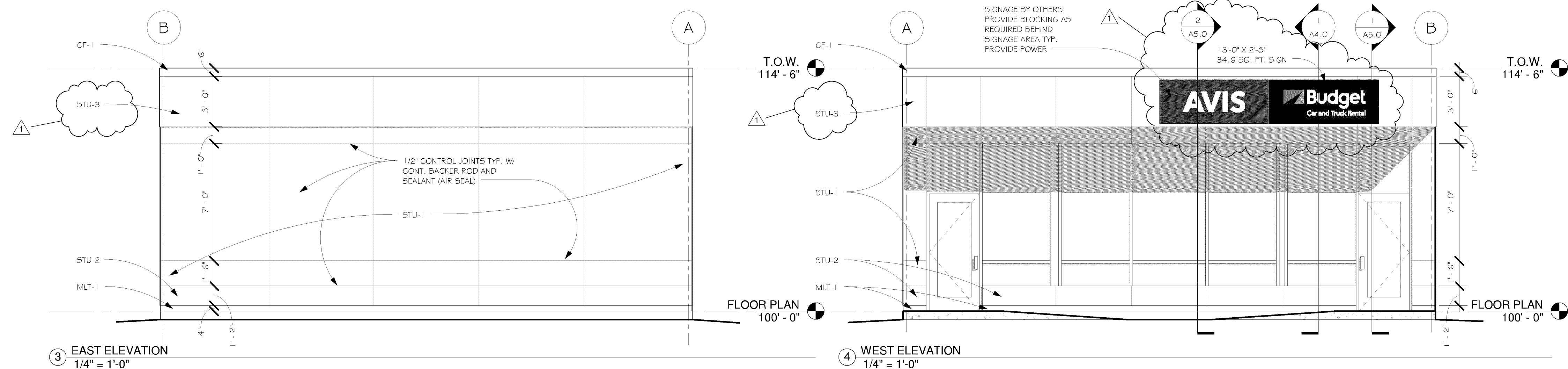
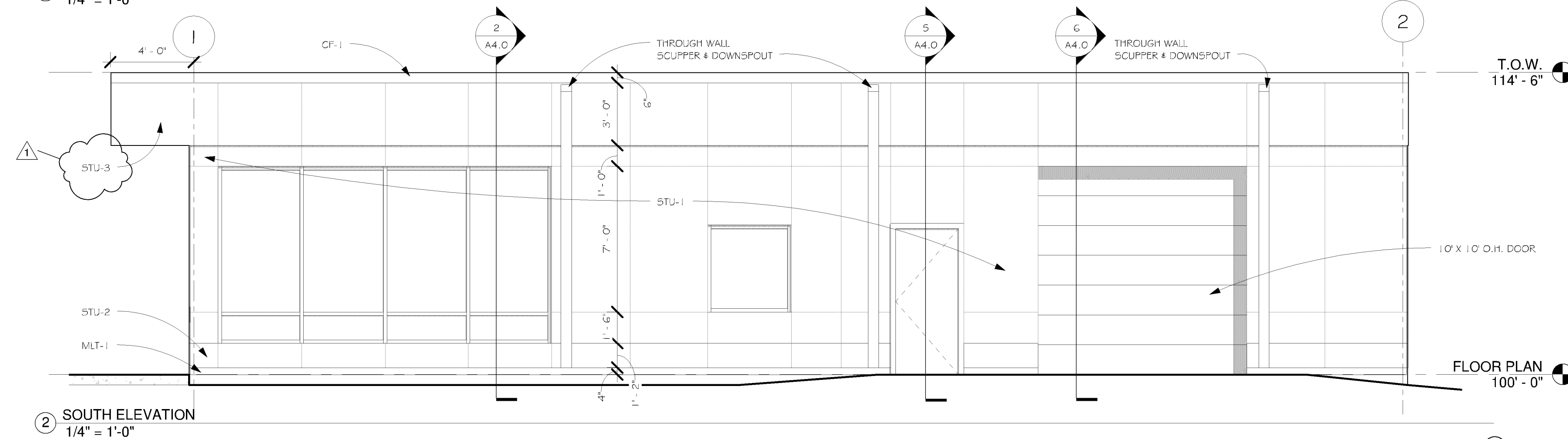
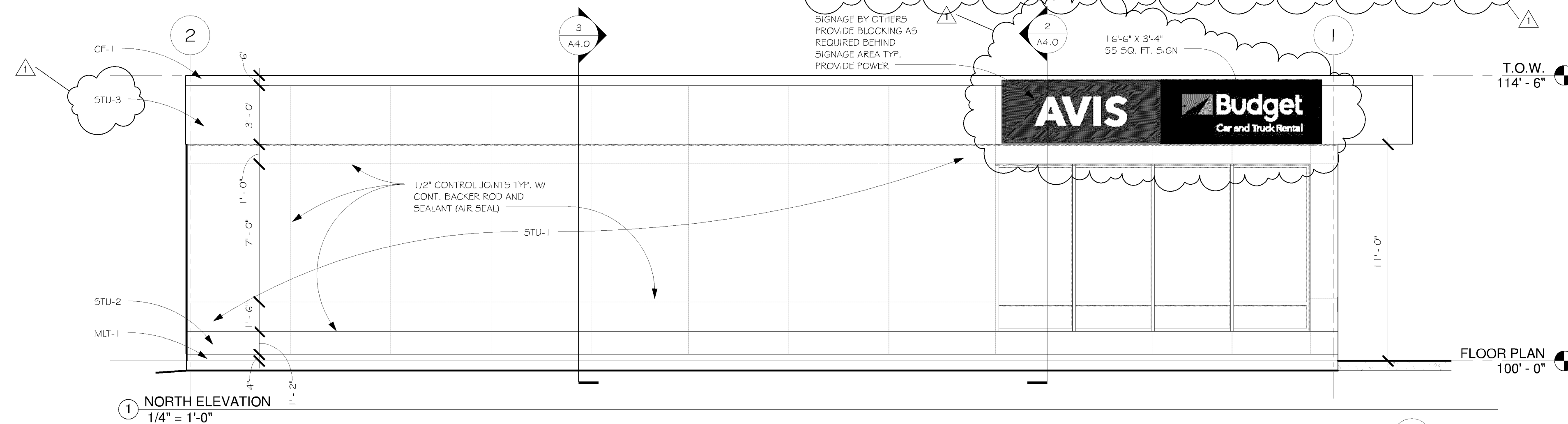
APPROVED
ZONING REVIEW ONLY
NMJ 04/19/2018

| STOREFRONT LEGEND | |
|-------------------|---|
| 6 | 1" CLEAR LOW-E DOUBLE PANE GLASS U-VALUE 0.4 |
| TG | CLAR LOW-E DOUBLE PANE TEMPERED GLASS U-VALUE 0.4 |
| BM | BREAK METAL FLUSH WITH FRAME - CLEAR ANODIZED |

| STOREFRONT NOTE: |
|--|
| 1. STOREFRONT MANUFACTURER RESPONSIBLE FOR CALCULATING AND PROVIDING THE NECESSARY REQUIREMENT FOR WIND LOADS ON THEIR PRODUCT |
| 2. PROVIDE HEAD DEFLECTION AS REQ'D CONSULT W/ STRUCT. |



| EXTERIOR FINISH SCHEDULE | | | | | |
|--|--------------------------|--------------|---------------------------|--|-------------------------------------|
| SUBMIT ALL COLOR SAMPLES TO OWNER FOR APPROVAL PRIOR TO CONSTRUCTION | | | | | |
| CODE | MATERIAL | MANUFACTURER | DESCRIPTION | | REMARKS |
| | | | PRODUCT | COLOR / FINISH | |
| STU-1 | 3 COAT STUCCO SYSTEM | - | SELF FURRING DIAMOND MESH | COLOR TO MATCH SHERWIN WILLIAMS PAINT / SW 7072 ONLINE (MEDIUM GRAY) SANDSTONE FINISH | PORTLAND CEMENT WITH INTEGRAL COLOR |
| STU-2 | 3 COAT STUCCO SYSTEM | - | SELF FURRING DIAMOND MESH | COLOR TO MATCH SHERWIN WILLIAMS PAINT / SW 7075 WEG GRAY (DARK GRAY) SANDSTONE FINISH | PORTLAND CEMENT WITH INTEGRAL COLOR |
| STU-3 | 3 COAT STUCCO SYSTEM | - | SELF FURRING DIAMOND MESH | COLOR TO MATCH SHERWIN WILLIAMS PAINT / SW 7064 PASSIVE (LIGHT GRAY) LIMESTONE FINISH | PORTLAND CEMENT WITH INTEGRAL COLOR |
| MLT-1 | PREFINISHED METAL | - | - | COLOR TO MATCH SHERWIN WILLIAMS PAINT / SW 7075 WEG GRAY (DARK GRAY) | - |
| CF-1 | PREFINISHED CAP FLASHING | - | - | COLOR TO MATCH SHERWIN WILLIAMS PAINT / SW 7064 PASSIVE (LIGHT GRAY) | - |



ARCHNET

usa

architecture • interiors
sustainable design

**333 N Main St. Ste. 201
Stillwater, MN 55082
651-430-0606**

archnetusa.com

BUDGET / AVIS

350 AMERICAN BLVD. W.
BLOOMINGTON, MN

Revisions

[illegible]

Registration Information

I hereby certify that this plan,
specification, or report was prepared by
me or under my direct supervision, and
that I am a duly Licensed Architect
under the laws of the State of
Minnesota

Printed Name
BETH F. DIEM

Signature

| | |
|--------|-----------|
| DATE | License # |
| 4-5-18 | 22903 |

Sheet Information

ELEVATIONS

Project No : 17-102 Drawing No :
Sheet Size : 24" x 36"
Drawn By : CAL
Checked By : RT
Date : 4-5-18

©2018 ARCHNET, Inc.

A3.0