

PRELIMINARY  
SUBJECT TO REVISION

# BLOOMINGTON CENTRAL STATION 8TH ADDITION

C.R. DOC. NO. \_\_\_\_\_

KNOW ALL PERSONS BY THESE PRESENTS: That Bloomington Central Station, LLC, a Delaware limited liability company, owner of the following described property:

Outlot Q, BLOOMINGTON CENTRAL STATION 2ND ADDITION.

And that BCS Management, LLC, a Minnesota limited liability company, owner of the following described property:

Outlot I, BLOOMINGTON CENTRAL STATION ADDITION.

and

Outlot K, BLOOMINGTON CENTRAL STATION 2ND ADDITION.

And that BCS GD West, LLC, a Minnesota limited liability company, owner of the following described property:

Outlot V, BLOOMINGTON CENTRAL STATION 2ND ADDITION

And that Hotel Bloomington 3200 E 81 St., LLC, a Delaware limited liability company, owner of the following described property:

Lot 1, Block 1, BLOOMINGTON CENTRAL STATION 3RD ADDITION

Have caused the same to be surveyed and platted as BLOOMINGTON CENTRAL STATION 8TH ADDITION and do hereby dedicate to the public for public use the public way and the drainage and utility easements as created by this plat.

In witness whereof said Bloomington Central Station, LLC, a Delaware limited liability company, has caused these presents to be signed by its proper officer this \_\_\_\_ day of \_\_\_\_\_, 20\_\_\_\_.

SIGNED: Bloomington Central Station, LLC, a Delaware limited liability company  
By MG Bloomington, LLC, a Delaware limited liability company, its manager

By: \_\_\_\_\_, its president  
Thomas J. McGough Jr.

STATE OF \_\_\_\_\_  
COUNTY OF \_\_\_\_\_

The foregoing instrument was acknowledged before me this \_\_\_\_ day of \_\_\_\_\_, 20\_\_\_\_ by Thomas J. McGough Jr., the president of MG Bloomington, LLC, a Delaware limited liability company, the manager of Bloomington Central Station, LLC, a Delaware limited liability company, on behalf of said company.

\_\_\_\_\_  
Signature

\_\_\_\_\_  
Notary Printed Name

Notary Public, \_\_\_\_\_ County, \_\_\_\_\_

My Commission Expires \_\_\_\_\_

In witness whereof said BCS Management, LLC, a Minnesota limited liability company, has caused these presents to be signed by its proper officer this \_\_\_\_ day of \_\_\_\_\_, 20\_\_\_\_.

SIGNED: BCS Management, LLC, a Minnesota limited liability company

By: \_\_\_\_\_, its \_\_\_\_\_

STATE OF \_\_\_\_\_  
COUNTY OF \_\_\_\_\_

The foregoing instrument was acknowledged before me this \_\_\_\_ day of \_\_\_\_\_, 20\_\_\_\_ by \_\_\_\_\_, the \_\_\_\_\_ of BCS Management, LLC, a Minnesota limited liability company, on behalf of said company.

\_\_\_\_\_  
Signature

\_\_\_\_\_  
Notary Printed Name

Notary Public, \_\_\_\_\_ County, \_\_\_\_\_

My Commission Expires \_\_\_\_\_

In witness whereof said BCS GD West, LLC, a Minnesota limited liability company, has caused these presents to be signed by its proper officer this \_\_\_\_ day of \_\_\_\_\_, 20\_\_\_\_.

SIGNED: BCS GD WEST, LLC, a Minnesota limited liability company

By: \_\_\_\_\_, its \_\_\_\_\_

STATE OF \_\_\_\_\_  
COUNTY OF \_\_\_\_\_

The foregoing instrument was acknowledged before me this \_\_\_\_ day of \_\_\_\_\_, 20\_\_\_\_ by \_\_\_\_\_, the \_\_\_\_\_ of BCS GD WEST, LLC, a Minnesota limited liability company, on behalf of said company.

\_\_\_\_\_  
Signature

\_\_\_\_\_  
Notary Printed Name

Notary Public, \_\_\_\_\_ County, \_\_\_\_\_

My Commission Expires \_\_\_\_\_

In witness whereof said HOTEL BLOOMINGTON 3200 E 81ST, LLC, a Delaware limited liability company, has caused these presents to be signed by its proper officer this \_\_\_\_ day of \_\_\_\_\_, 20\_\_\_\_.

SIGNED: HOTEL BLOOMINGTON 3200 E 81ST, LLC, a Delaware limited liability company

By: \_\_\_\_\_, its \_\_\_\_\_

STATE OF \_\_\_\_\_  
COUNTY OF \_\_\_\_\_

The foregoing instrument was acknowledged before me this \_\_\_\_ day of \_\_\_\_\_, 20\_\_\_\_ by \_\_\_\_\_, the \_\_\_\_\_ of HOTEL BLOOMINGTON 3200 E 81ST, LLC, a Delaware limited liability company, on behalf of said company.

\_\_\_\_\_  
Signature

\_\_\_\_\_  
Notary Printed Name

Notary Public, \_\_\_\_\_ County, \_\_\_\_\_

My Commission Expires \_\_\_\_\_

I, Leonard F. Carlson, do hereby certify that this plat was prepared by me or under my direct supervision; that I am a duly Licensed Land Surveyor in the State of Minnesota; that this plat is a correct representation of the boundary survey; that all mathematical data and labels are correctly designated on this plat; that all monuments depicted on this plat have been or will be correctly set within one year; that all water boundaries and wet lands as defined in Minnesota Statutes, Section 505.01, Subd. 3, as of the date of this certificate are shown and labeled on this plat; and all public ways are shown and labeled on the plat.

Dated this \_\_\_\_ day of \_\_\_\_\_, 20\_\_\_\_.

\_\_\_\_\_  
Leonard F. Carlson, Land Surveyor  
Minnesota License No. 44890

STATE OF MINNESOTA  
COUNTY OF HENNEPIN

This instrument was acknowledged before me this \_\_\_\_ day of \_\_\_\_\_, 20\_\_\_\_, by Leonard F. Carlson.

\_\_\_\_\_  
Signature

\_\_\_\_\_  
Notary Printed Name

Notary Public, Minnesota  
My Commission Expires January 31, \_\_\_\_\_

BLOOMINGTON, MINNESOTA

This plat of BLOOMINGTON CENTRAL STATION 8TH ADDITION was approved and accepted by the City Council of Bloomington, Minnesota, at a regular meeting thereof held this \_\_\_\_ day of \_\_\_\_\_, 20\_\_\_\_, and said plat is in compliance with the provisions of Minnesota Statutes, Section 505.03, Subd. 2.

CITY COUNCIL OF BLOOMINGTON, MINNESOTA

By \_\_\_\_\_, Mayor By \_\_\_\_\_, City Manager

RESIDENT AND REAL ESTATE SERVICES, Hennepin County, Minnesota

I hereby certify that taxes payable in 20\_\_\_\_ and prior years have been paid for land described on this plat, dated this \_\_\_\_ day of \_\_\_\_\_, 20\_\_\_\_.

Mark V. Chapin, County Auditor By \_\_\_\_\_ Deputy

SURVEY DIVISION, Hennepin County, Minnesota

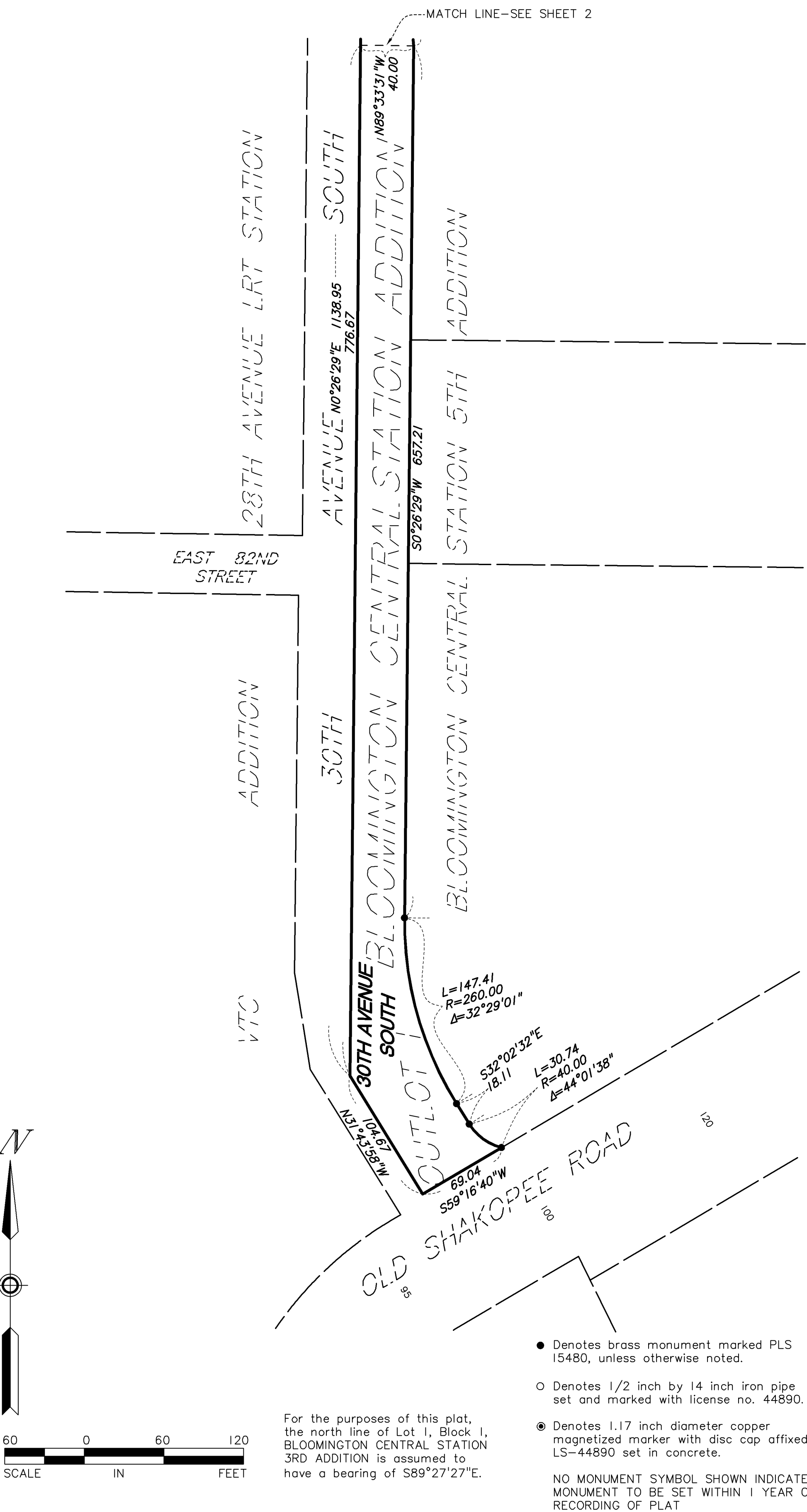
Pursuant to Minnesota Statutes, Sec. 383B.565 (1969), this plat has been approved this \_\_\_\_ day of \_\_\_\_\_, 20\_\_\_\_.

Chris F. Mavis, County Surveyor By \_\_\_\_\_

COUNTY RECORDER, Hennepin County, Minnesota

I hereby certify that the within plat of BLOOMINGTON CENTRAL STATION 8TH ADDITION was recorded in this office this \_\_\_\_ day of \_\_\_\_\_, 20\_\_\_\_ at \_\_\_\_\_ o'clock \_\_\_\_M.

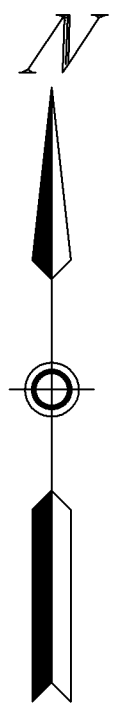
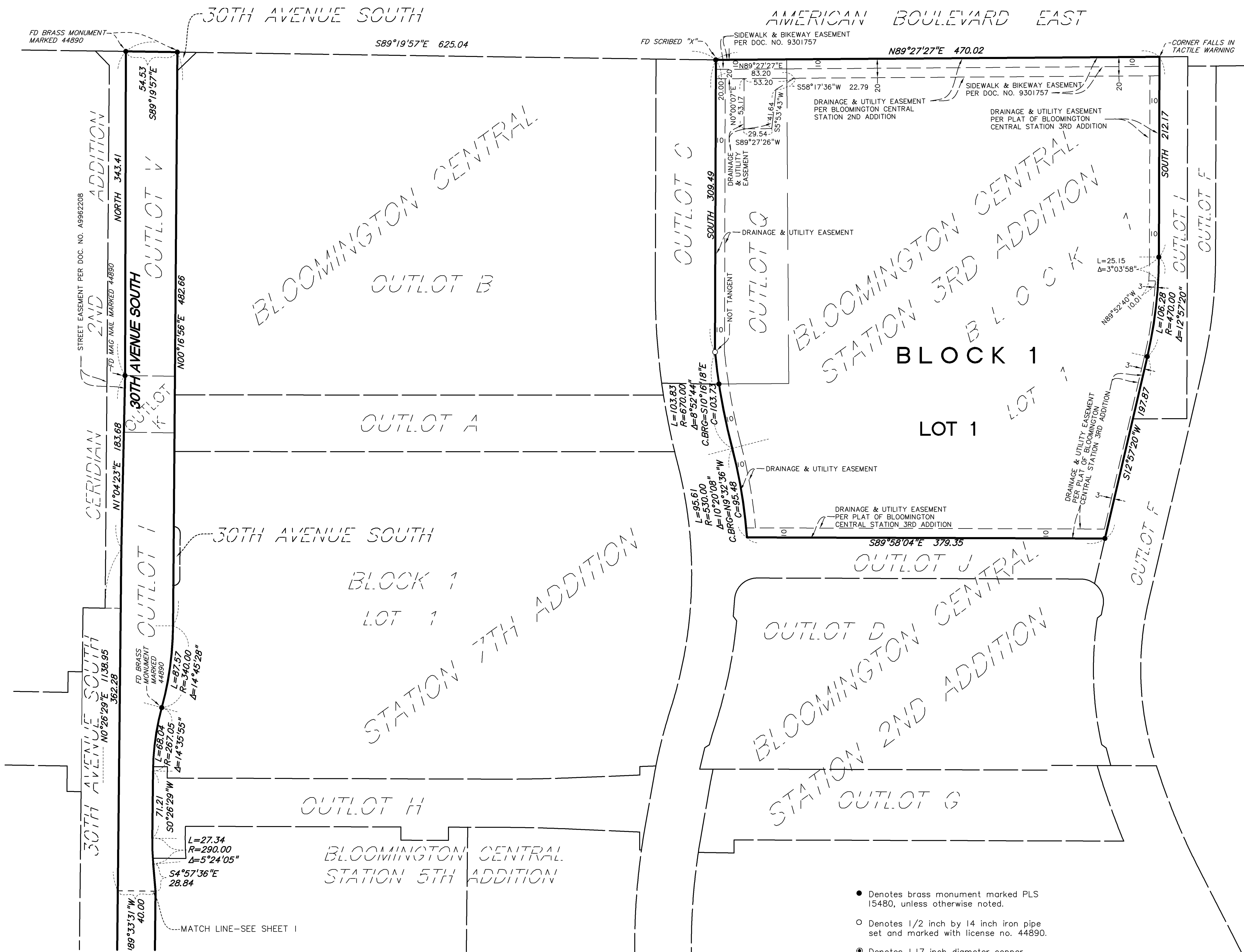
Amber Bougie, County Recorder By \_\_\_\_\_ Deputy



PRELIMINARY  
SUBJECT TO REVISION

BLOOMINGTON CENTRAL STATION 8TH ADDITION

C.R. DOC. NO. \_\_\_\_\_



For the purposes of this plat,  
the north line of Lot 1, Block 1,  
BLOOMINGTON CENTRAL STATION  
3RD ADDITION is assumed to  
have a bearing of S89°27'27"E.

60 0 60 120  
SCALE IN FEET

- Denotes brass monument marked PLS 15480, unless otherwise noted.
  - Denotes 1/2 inch by 14 inch iron pipe set and marked with license no. 44890.
  - ⊙ Denotes 1.17 inch diameter copper magnetized marker with disc cap affixed LS-44890 set in concrete.
- NO MONUMENT SYMBOL SHOWN INDICATES MONUMENT TO BE SET WITHIN 1 YEAR OF RECORDING OF PLAT