

# NINE MILE WEST FOURTH ADDITION

C.R. DOC. NO.

**KNOW ALL PERSONS BY THESE PRESENTS:** That \_\_\_\_\_, a \_\_\_\_\_, fee owner of the following described property situated in the County of Hennepin, State of Minnesota, to wit:

Lot 1, Block 1, Nine Mile West 2nd Addition, according to the recorded plat thereof, Hennepin County, Minnesota.

Has caused the same to be surveyed and platted as **NINE MILE WEST FOURTH ADDITION** and do hereby dedicate to the public for public use forever the public ways and also dedicates the easements as shown on this plat for drainage and utility purposes as shown on this plat.

In witness whereof said \_\_\_\_\_, has caused these presents to be signed by its proper officers this \_\_\_\_\_ day of \_\_\_\_\_, 20\_\_.

## OWNER'S NAME

By \_\_\_\_\_ By \_\_\_\_\_  
Name, Title Name, Title

## STATE OF MINNESOTA

### COUNTY OF \_\_\_\_\_

The foregoing instrument was acknowledged before me this \_\_\_\_\_ day of \_\_\_\_\_, 20\_\_, by \_\_\_\_\_, \_\_\_\_\_ and \_\_\_\_\_, \_\_\_\_\_ of \_\_\_\_\_, a \_\_\_\_\_, on behalf of the \_\_\_\_\_.

\_\_\_\_\_  
(Signature) (Name Printed)

Notary Public, \_\_\_\_\_ County, Minnesota  
My Commission Expires \_\_\_\_\_

I, Chris Ambourn do hereby certify that this plat was prepared by me or under my direct supervision; that i am a duly Licensed Land Surveyor in the State of Minnesota; that this plat is a correct representation of the boundary survey; that all mathematical data and labels are correctly designated on this plat; that all monuments depicted on this plat have been, or will be correctly set within one year; that all water boundaries and wet lands, as defined in Minnesota Statutes, Section 505.01, Subd. 3, as of the date of this certificate are shown and labeled on this plat; and all public ways are shown and labeled on this plat.

Dated this \_\_\_\_\_ day of \_\_\_\_\_, 20\_\_.

\_\_\_\_\_  
Chris Ambourn, Land Surveyor  
Minnesota License No. 43055

## STATE OF MINNESOTA

### COUNTY OF \_\_\_\_\_

This instrument was acknowledged before me on this \_\_\_\_\_ day of \_\_\_\_\_, 20\_\_, by \_\_\_\_\_.

\_\_\_\_\_  
(Signature) (Name Printed)

Notary Public, \_\_\_\_\_ County, Minnesota  
My Commission Expires \_\_\_\_\_

## CITY COUNCIL, CITY OF BLOOMINGTON, MINNESOTA

This plat of **NINE MILE WEST FOURTH ADDITION** was approved and accepted by the City Council of the Clty of \_\_\_\_\_ Minnesota, at a regular meeting thereof held this \_\_\_\_\_ day of \_\_\_\_\_, 20\_\_, and said plat is in compliance with the provisions of Minnesota Statutes, Section 505.03, Subdivision 2.

## CITY COUNCIL, CITY OF BLOOMINGTON, MINNESOTA

By \_\_\_\_\_ By \_\_\_\_\_  
Mayor Manager

## RESIDENT AND REAL ESTATE SERVICES, Hennepin County, Minnesota

I hereby certify that taxes payable in 20\_\_ and prior years have been paid for land described on this plat, dated this \_\_\_\_\_ day of \_\_\_\_\_, 20\_\_.

Mark V. Chapin, County Auditor By \_\_\_\_\_  
Deputy

## SURVEY DIVISION, Hennepin County, Minnesota

Pursuant to MINN. STAT. Sec. 383B.565 (1969) this plat has been approved this \_\_\_\_\_ day of \_\_\_\_\_, 20\_\_.

Chris F. Mavis, County Surveyor By \_\_\_\_\_

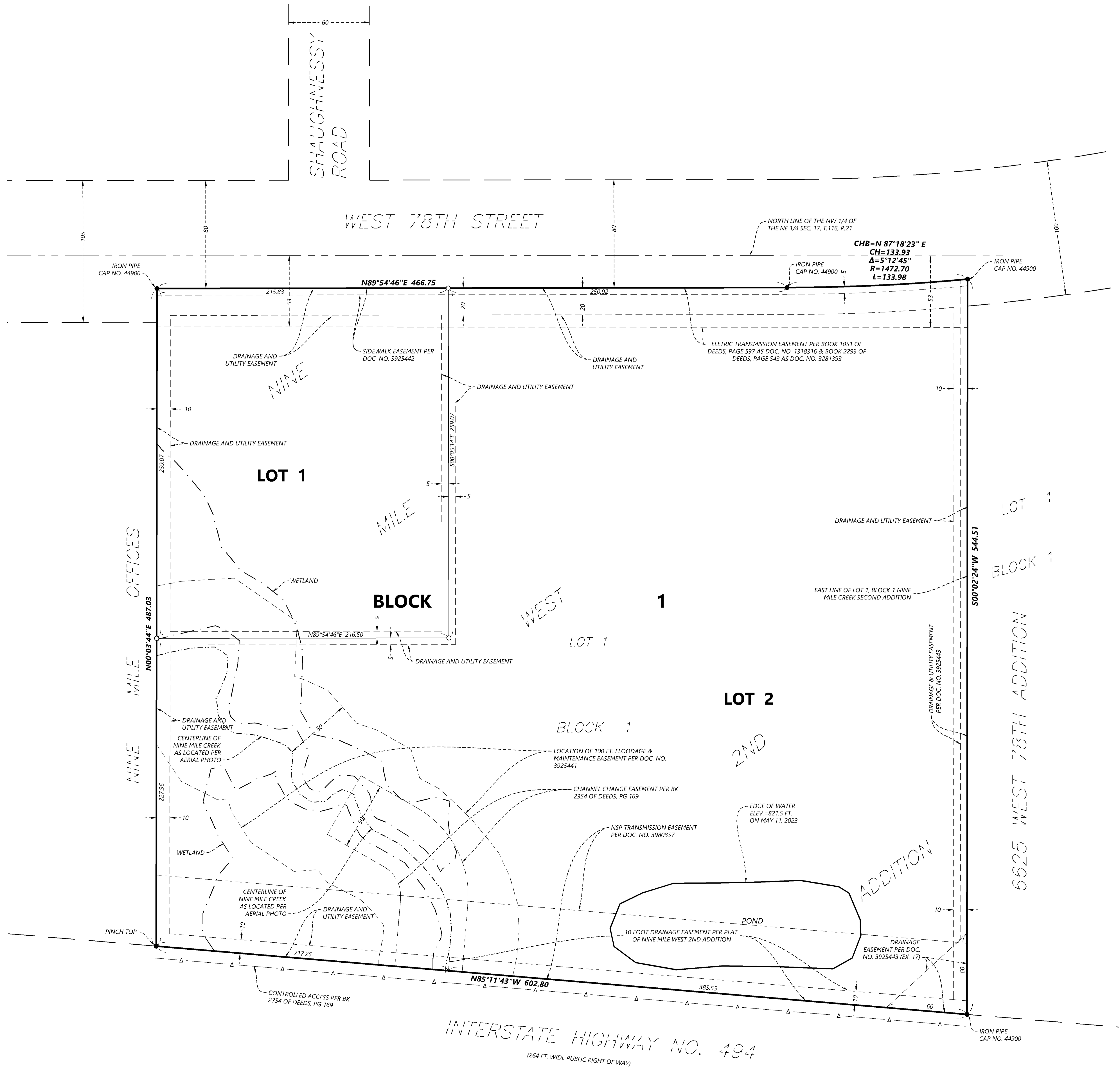
## COUNTY RECORDER, Hennepin County, Minnesota


I hereby certify that the within plat of **NINE MILE WEST FOURTH ADDITION** recorded in this office this \_\_\_\_\_ day of \_\_\_\_\_, 20\_\_, at \_\_\_\_\_ o'clock \_\_\_\_M.

Martin McCormick, County Recorder By \_\_\_\_\_  
Deputy

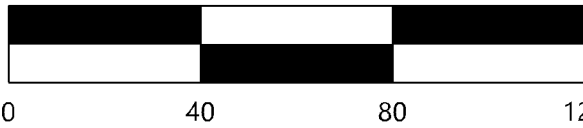
NINE MILE WEST FOURTH ADDITION

C.R. DOC. NO.






1 = 80  
SCALE IN FEET




Elevations and ground contours shown hereon are relative to the NAVD88 vertical datum and are relative to MnDot Benchmark 2785 BM which has an elevation of 863.15 ft.


The East line of LOT 1, BLOCK 1, NINE MILE CREEK CREEK SECOND ADDITION is assumed to bear S 00°02'24" W.



FOUND MONUMENT AS NOTED ON SURVEY



DENOTES WET LAND AREA



DENOTES CONTROLLED ACCESS