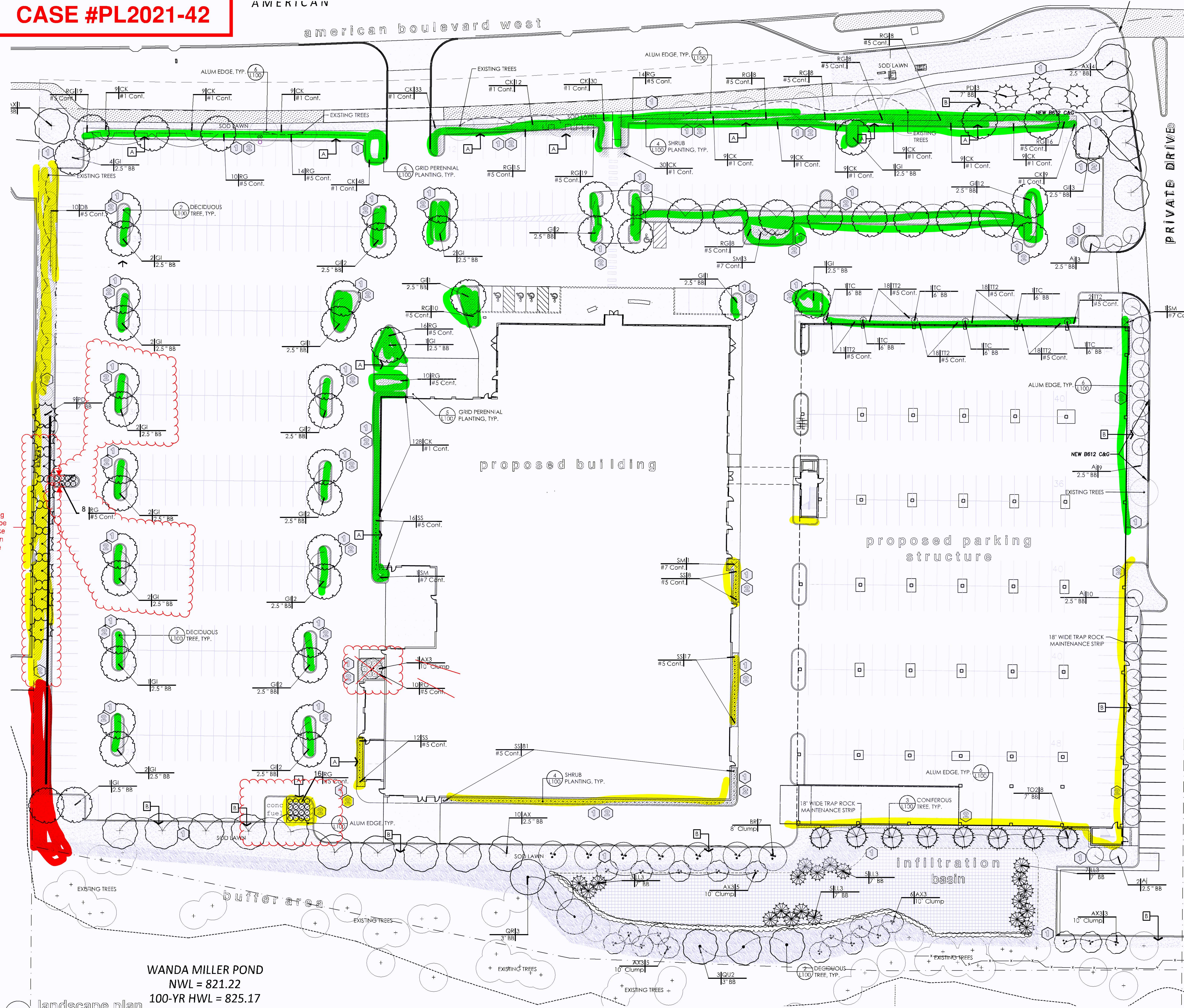


CASE #PL2021-42

AMERICAN

american boulevard west

1 landscape plan
planting schedule

TOTAL TREES = 190 TOTAL SHRUBS = 565

CODE	QTY	BOTANICAL / COMMON NAME	SIZE	CONT.
AI	23	Acer rubrum 'Red Sunset' / Red Sunset Maple	2.5" BB	
AX	33	Acer 'Nimbus' / Black Hills Maple	2.5" BB	
AX3	20	Aster 'Nimbus' / Black Hills Maple	10' Clump	
BR	7	Betula nigra / River Birch	8" Clump	
GI	58	Gleditsia inaequalis 'Imperial' / Imperial Honeylocust	2.5" BB	
L13	20	Larix laricina / Tamarack	7" BB	
PO	12	Picea canadensis 'Millers' / Black Hills White Spruce	7" BB	
Q12	7	Quercus bicolor / Swamp White Oak	3" BB	
QR	3	Quercus rubra / Red Oak	3" BB	
T12	6	Tilia americana / American Lilac	7" BB	

CODE	QTY	BOTANICAL / COMMON NAME	SIZE	CONT.
DA	10	David's Yellow / Southern Yellow Pine	2.5" BB	
RG	245	Rhus glabra 'Graciosa' / Graciosa Sumac	2.5" BB	
SS	134	Sorbus domestica 'Sem' / Sem Ash Leaf Spine	2.5" BB	
SM	6	Syringa meyeri 'Palmeri' / Dwarf Korean Lilac	2.5" BB	
TC	6	Taxus canadensis 'Copeland' / Copeland Japanese Yew	2.5" BB	
TT2	86	Taxus canadensis 'Tussock' / Tussock Yew	2.5" BB	

CODE	QTY	BOTANICAL / COMMON NAME	SIZE	CONT.
CK	371	Coreopsis grandiflora 'Karl Foerster' / Feather Reed Grass	1" BB	
SEED	13,717	SEED 2: 13,717		
SEED	13,717	SEED 1: 13,717		
PP	33,424	PP 1: 33,424		

soils notes

- ALL PLANTING BEDS SHALL RECEIVE 8" PULVERIZED LOAM TOPSOIL BORROW MIN DOT SPEC. 3877-2B ENHANCE WITH AGED AND SCREEN COMPOST
- ALL SODDED(LAWN) AREA SHALL RECEIVE 4" MIN. COMMON TOPSOIL BORROW MIN DOT SPEC. 3877-1A

key notes

- IRRIGATION: PROVIDE IRRIGATION FOR SOD AND PLANTING AREAS WITHIN THE PROJECT BOUNDARIES FOR 100% COVERAGE. REFER TO DESIGN BUILD IRRIGATION SPECIFICATION. PROVIDE SHOT DRAWING FOR IRRIGATION SYSTEM INCLUDING HEAD LAYOUT, SPACING, TYPE, BACKFLOW PREVENTER LOCATION, POINT OF CONNECTION, SLEEVES, CONTROLLER, VALVE BOX LOCATIONS. ZONE INDICATIONS AND PIPE SIZING. PROVIDE ON-SITE OPERATION TUTORIAL FOR OWNER AND INCLUDE ALL MANUALS AND INFORMATION ON THE SYSTEM
- 1" DRESSER TRAP ROCK MULCH IN PLANTING BEDS INSTALLED TO 4" DEPTH ON NON-WOVEN LANDSCAPE FABRIC

planting notes

- CONFIRM ALL QUANTITIES, SHAPES AND LOCATIONS OF BEDS, AND ADJUST AS REQUIRED TO CONFORM TO THE SITE CONDITIONS. CONFIRM ANY ADJUSTMENTS WITH THE LANDSCAPE ARCHITECT.
- LOCATE ALL UTILITIES. NOTIFY THE LANDSCAPE ARCHITECT OF ANY CONFLICTS WITH NEW CONSTRUCTION.
- THE CONTRACTOR SHALL REMOVE FROM THE SITE ALL SOD/TURF WHICH HAS BEEN REMOVED FOR NEW PLANT BEDS. ANY PLANT STOCK NOT PLANTED ON DAY OF DELIVERY SHALL BE HELED IN AND WATERED UNTIL INSTALLATION. PLANTS NOT MAINTAINED IN THIS MANNER WILL BE REJECTED.
- THE PLANT TAKES PRECEDENCE OVER THE PLANT SCHEDULE IF DISCREPANCIES EXIST. ADVISE LANDSCAPE ARCHITECT OF ANY DISCREPANCIES.
- THE CONTRACTOR SHALL AVOID DAMAGING EXISTING TREES. DO NOT STORE OR DRIVE HEAVY MATERIALS OVER TREE ROOTS. DO NOT DAMAGE TREE BARK OR BRANCHES.
- THE CONTRACTOR SHALL KEEP PAVEMENTS, FIXTURES AND BUILDINGS CLEAN AND UNSTAINED. ANY DAMAGE TO EXISTING FACILITIES SHALL BE REPAIRED AT THE CONTRACTOR'S EXPENSE. THE PROJECT SITE SHALL BE KEPT CLEAR OF CONSTRUCTION WASTE AND DEBRIS.
- THE LANDSCAPE CONTRACTOR SHALL BE RESPONSIBLE FOR PLANTING SOIL QUANTITIES TO COMPLETE THE WORK SHOWN ON THE PLAN. MULCH, PLANTING SOIL AND OTHER MISCELLANEOUS PLANTING COMPONENTS SHALL BE CONSIDERED INCIDENTAL TO THE RELATED PLAN. VERIFY ALL QUANTITIES.
- CONTRACTOR IS RESPONSIBLE FOR WATERING AND ALL PLANT CARE UNTIL FINAL ACCEPTANCE BY THE OWNER.
- PLANT MATERIAL SHALL BE PROTECTED AND MAINTAINED UNTIL THE INSTALLATION OF PLANTINGS IS COMPLETE. INSPECTION HAS BEEN MADE AND PLANTING IS ACCEPTED EXCLUSIVE OF THE GUARANTEE.
- MAINTENANCE SHALL INCLUDE WATERING, WEEDING, MULCHING, REMOVAL OF DEAD MATERIAL PRIOR TO GROWING SEASON, RE-SITTING PLANTS AND PROPER GRADING, AND KEEPING PLANTS IN A PLUMB POSITION. AFTER ACCEPTANCE, THE OWNER SHALL ASSUME MAINTENANCE RESPONSIBILITIES. HOWEVER, THE CONTRACTOR SHALL CONTINUE TO BE RESPONSIBLE FOR KEEPING THE TREES PLUMB THROUGHOUT THE GUARANTEE PERIOD.
- WATERING: MAINTAIN A WATERING SCHEDULE WHICH WILL THOROUGHLY WATER ALL PLANTS ONCE A WEEK AND SOD EVERY OTHER DAY UNTIL ACCEPTANCE BY THE OWNER. IN EXTREMELY HOT, DRY WEATHER, WATER MORE OFTEN AS REQUIRED BY INDICATIONS OF HEAT STRESS SUCH AS WILTING LEAVES. CHECK MOISTURE UNDER MULCH PRIOR TO WATERING TO DETERMINE NEED. CONTRACTOR SHALL MAKE THE NECESSARY ARRANGEMENTS FOR WATER.

LANDSCAPING PLAN APPROVED

BLOOMINGTON MN 08/17/2024

alum. edge

proposed: 1/2" = 30'

fernandez
landscape
architects
755 glen avenue n suite 103
st. paul, mn 55104
651.341.361 or 651.248.6155

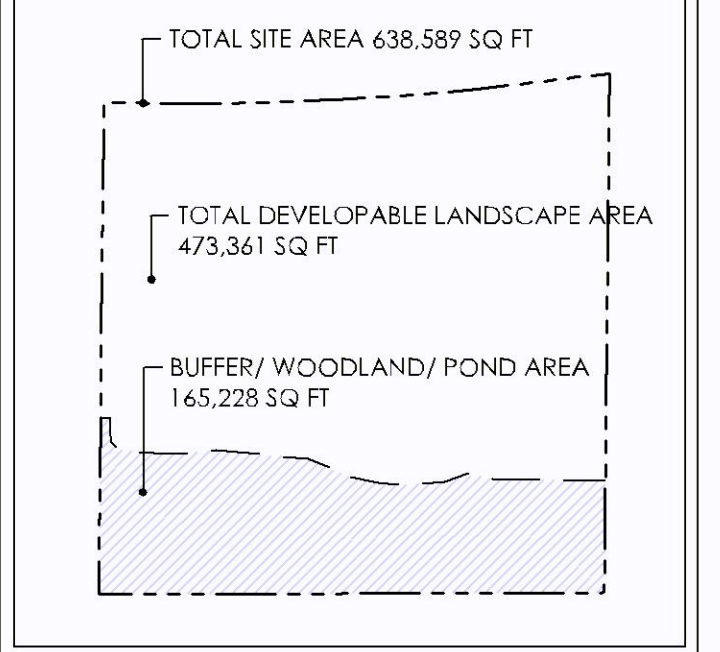
PHILLIPS Architects
& Contractors, Ltd.

REHDER
& ASSOCIATES, INC.
Civil Engineers & Land Surveyors

WALSER

CITY OF BLOOMINGTON
LANDSCAPE CALCULATIONSTOTAL SITE AREA
638,589.6 sq ft (14.66 acres)TOTAL BUFFER/WOODLAND/POND AREA
165,228 sq ft (3.79 acres)TOTAL DEVELOPABLE LANDSCAPE AREA
473,361 sq ft (10.87 acres)TREES REQUIRED
473,361 / 2,500 = 189 TREESSHRUBS REQUIRED
473,361 / 1,000 = 473 SHRUBS

PROPERTY DIAGRAM



project

WALSER TOYOTA
4401 American Blvd. W.
Bloomington, MN. 55437

PROJECT NUMBER: 210007

certification

I HEREBY CERTIFY THAT this plan, specification, or report was prepared by me or under my direct supervision and that I am a duly licensed Landscape Architect under the laws of the State of Minnesota.

SIGNATURE:
TYPED OR PRINTED NAME: JASON P. AUNE
DATE: 08-22-2022 REG. NO.: 42162

issue / revision

NO	DATE	ISSUE / REVISION
6	9-22-2022	REVISED PER CITY COMMENT
5	4-26-2022	REVISED
4	8-16-2021	PERMIT SET REVISED PER CITY COMMENT
3	8-11-2021	PERMIT SET REVISED PER CITY COMMENT
2	7-22-2021	PERMIT SET
1	3-2-2021	CITY SUBMITTAL

sheet title

LANDSCAPE
PLAN

THIS SQUARE APPEARS 1/2" X 1/2" ON FULL SIZE SHEETS.

DRAWN BY:
CHECKED BY:

L100

COPYRIGHT 2021 BY ALF LLC. ALL RIGHTS RESERVED.