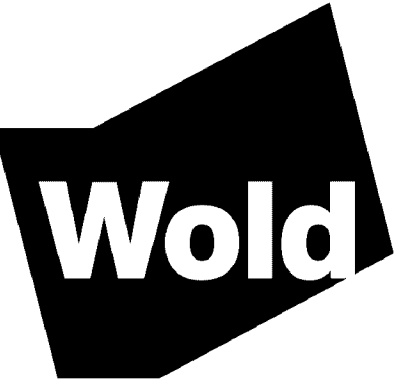


Jefferson and Kennedy High School Field Improvements
4001 West 102nd Street
Bloomington, MN 55437

Independent School District #271
4001 West 102nd Street
Bloomington, MN 55437



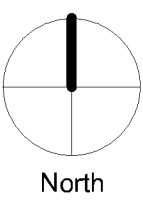
WOLD ARCHITECTS AND ENGINEERS
332 Minnesota Street, Suite W3000
Saint Paul, MN 55101
woldae.com | 651.227.7773

I hereby certify that this plan, specification or report was prepared by me or under my direct supervision and that I am a duly Licensed ARCHITECT under the laws of the State of MINNESOTA

License Number: **Paul Apikowski 42737** Date: **10/24/2022**

Revisions		
Description	Date	Num

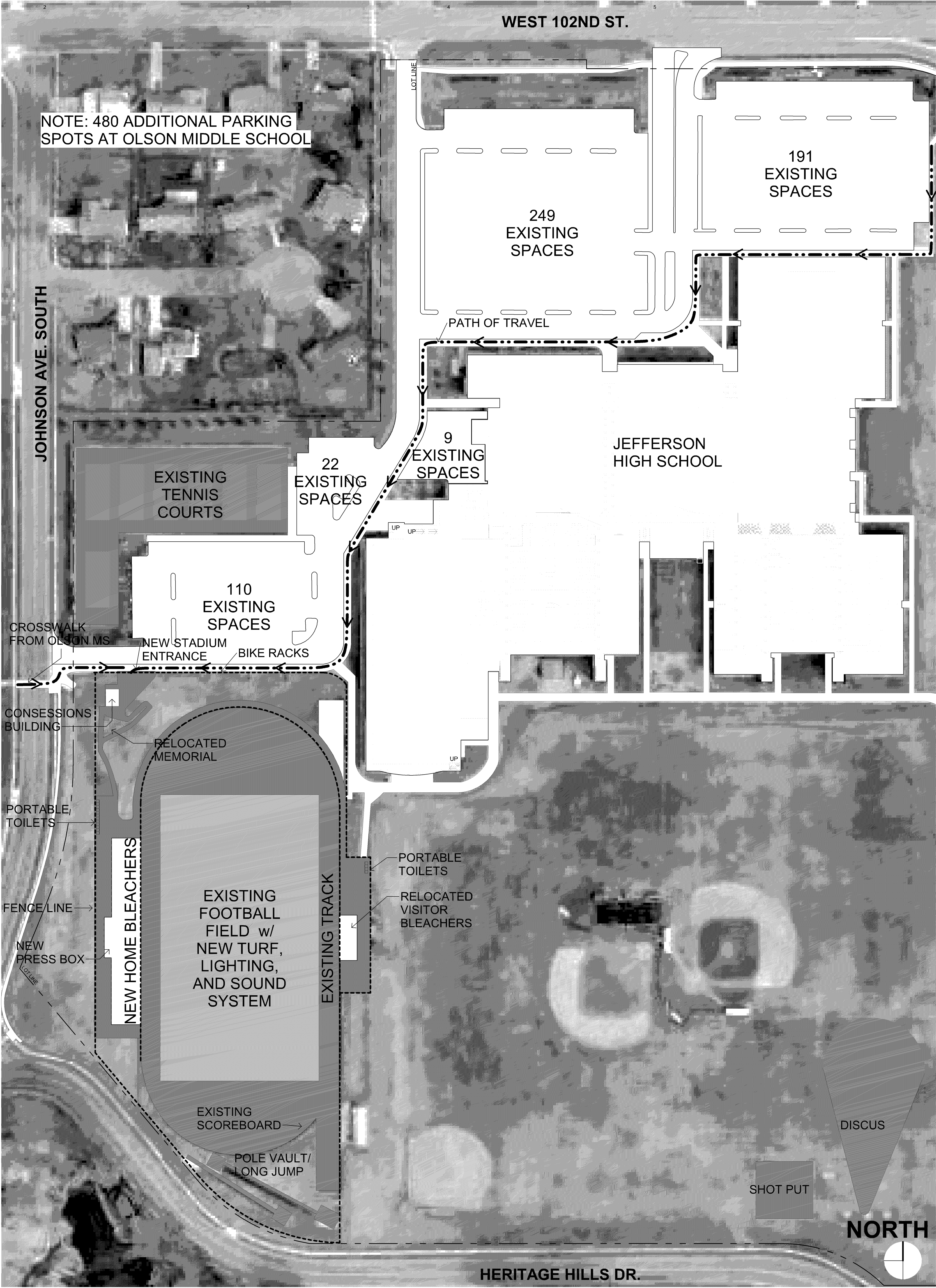
Comm: **222084**
Date: **Oct. 24, 2022**
Drawn: **Author**
Check: **Checker**



STADIUM SITE PLAN

Scale: 1" = 30'-0"

J-A0.21



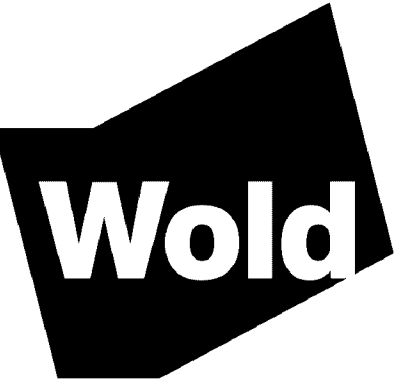
F2 JEFFERSON SITE PLAN
1" = 60'-0"

Jefferson and Kennedy High School Field Improvements

4001 West 102nd Street
Bloomington, MN 55437

Independent School District #271

4001 West 102nd Street
Bloomington, MN 55437



WOLD ARCHITECTS AND ENGINEERS

332 Minnesota Street, Suite W3000
Saint Paul, MN 55101

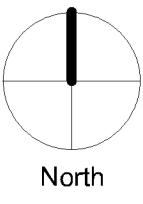
woldae.com | 651.227.7773

I hereby certify that this plan, specification or report was prepared by me or under my direct supervision and that I am a duly Licensed ARCHITECT under the laws of the State of MINNESOTA

License Number: Paul Aplikowski 42737 Date: 10/24/2022

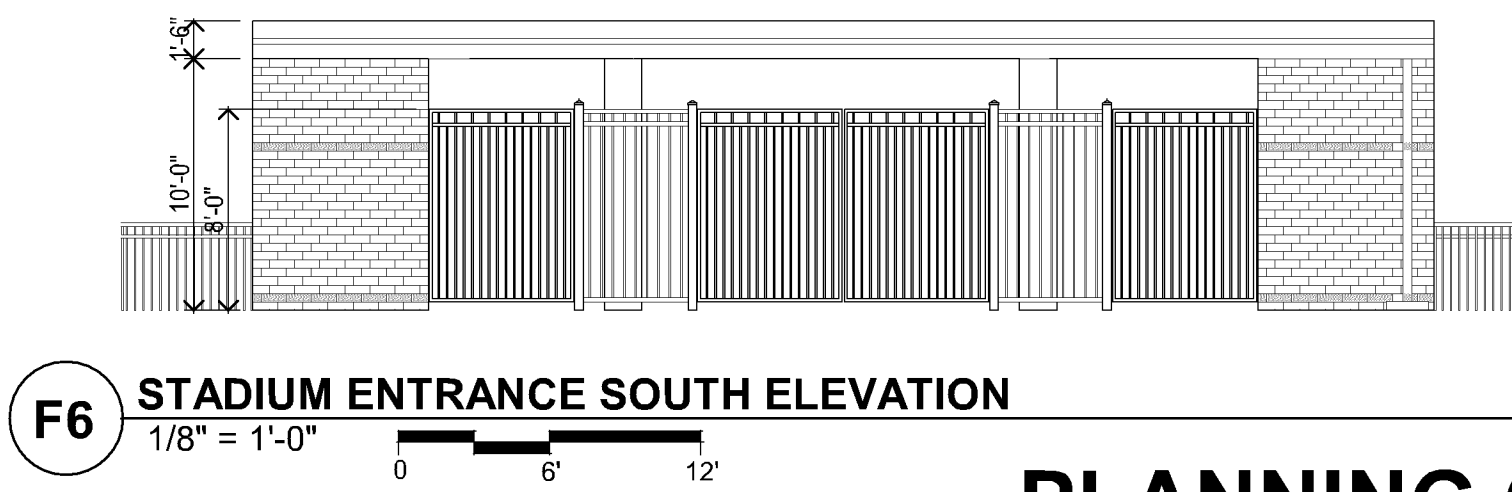
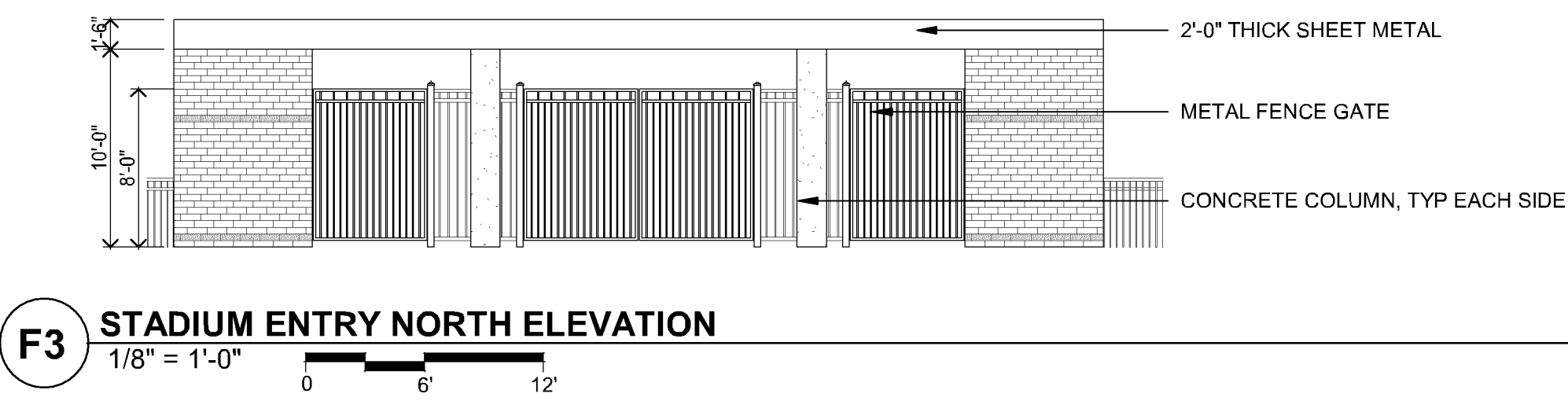
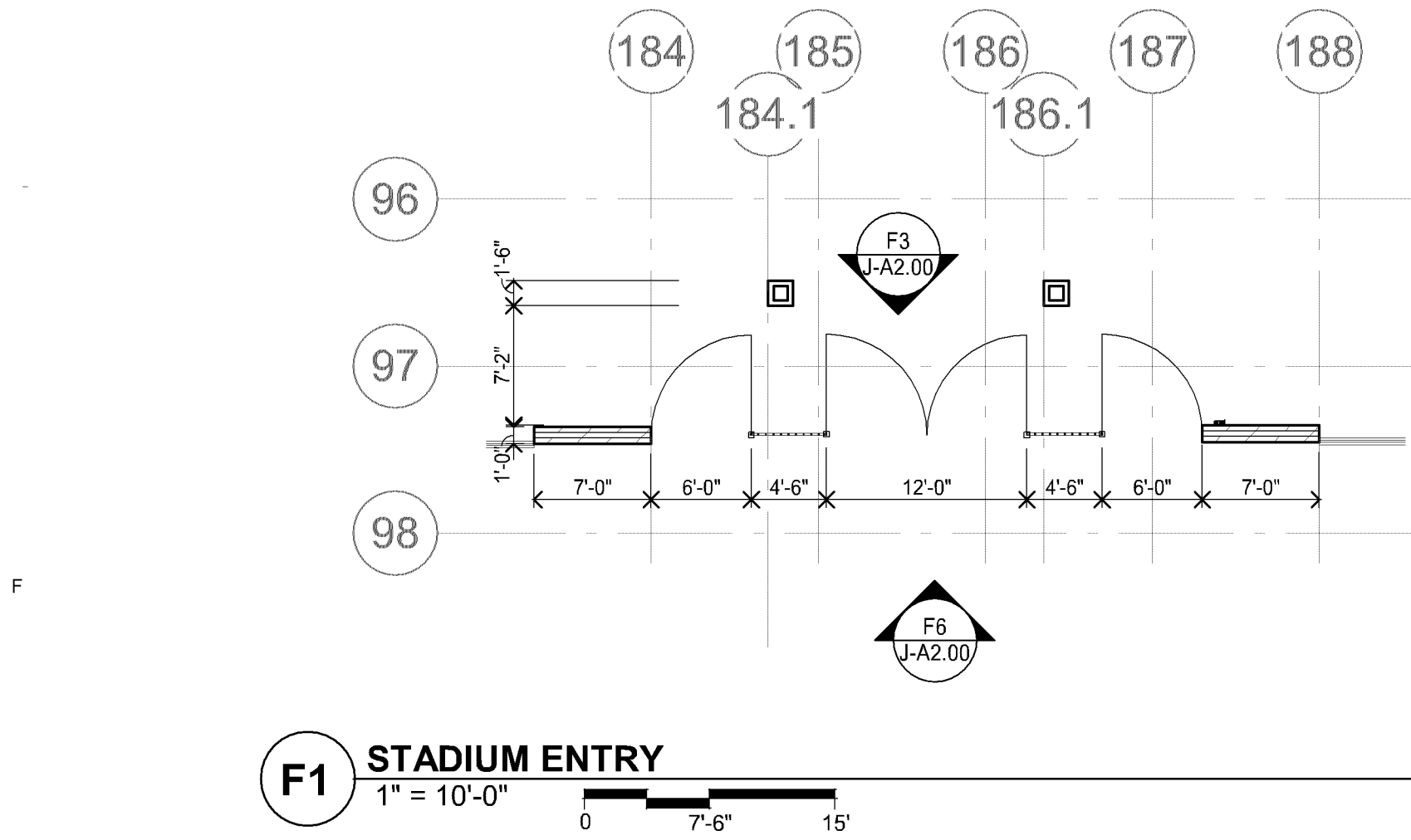
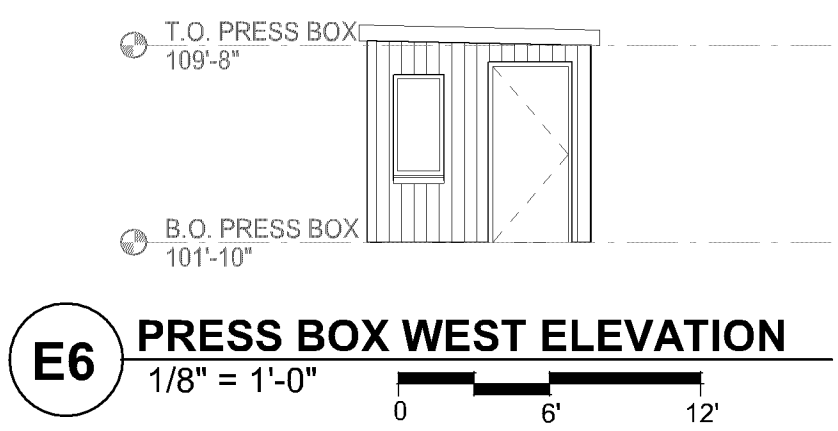
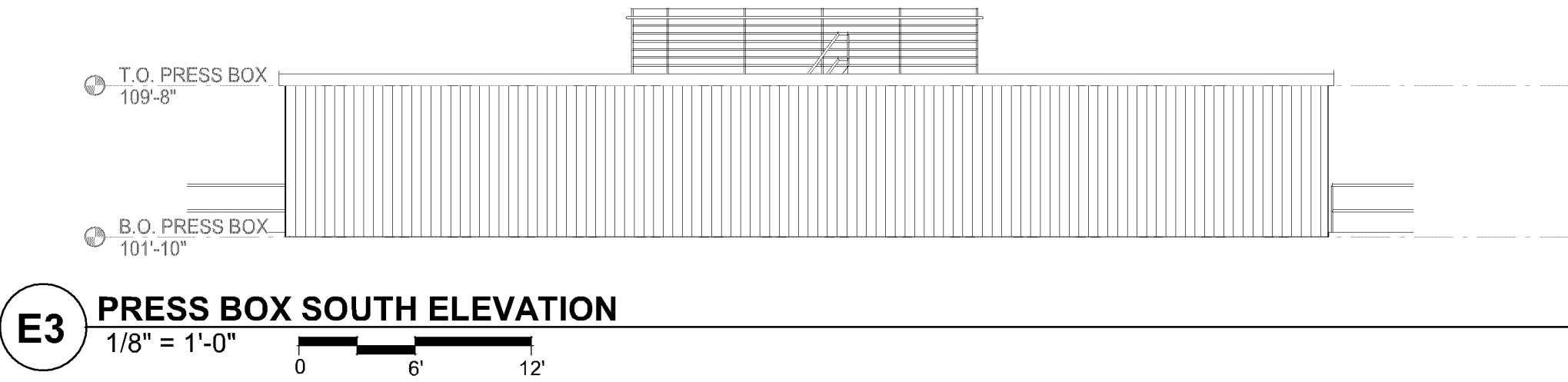
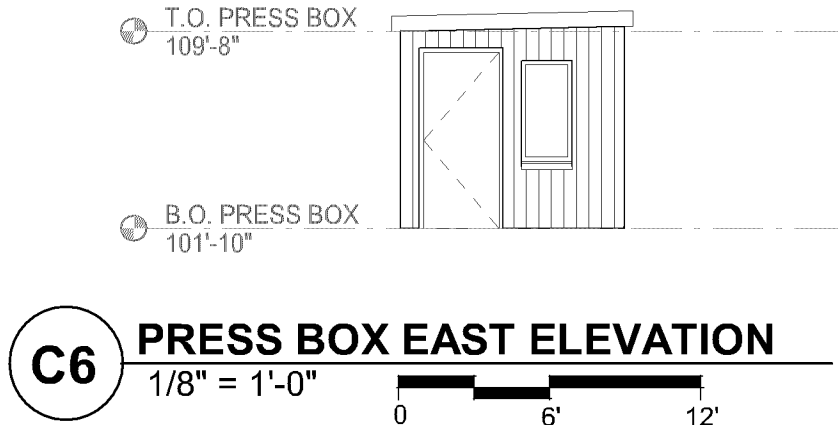
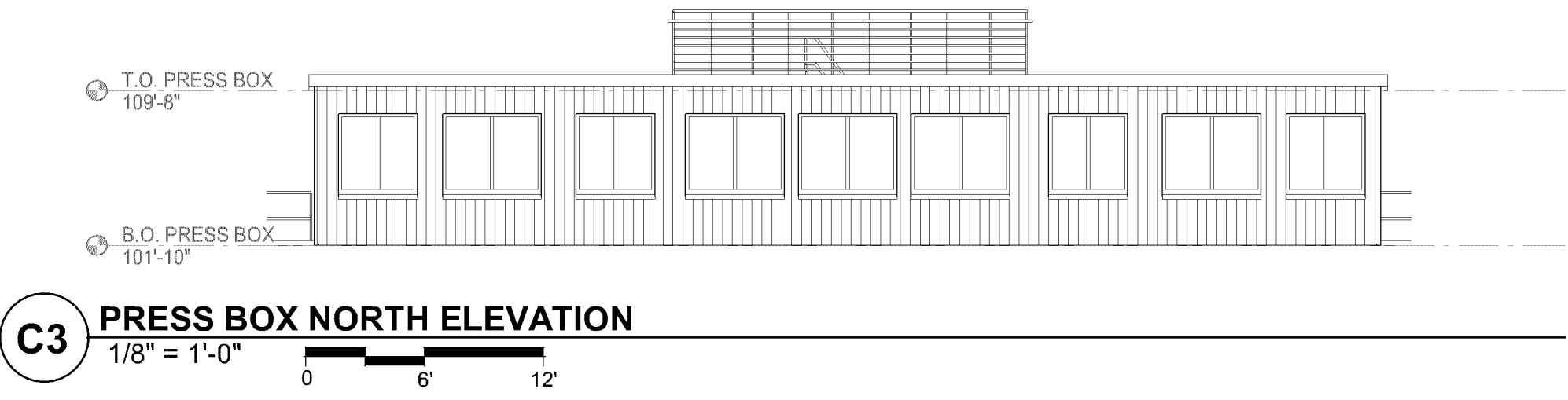
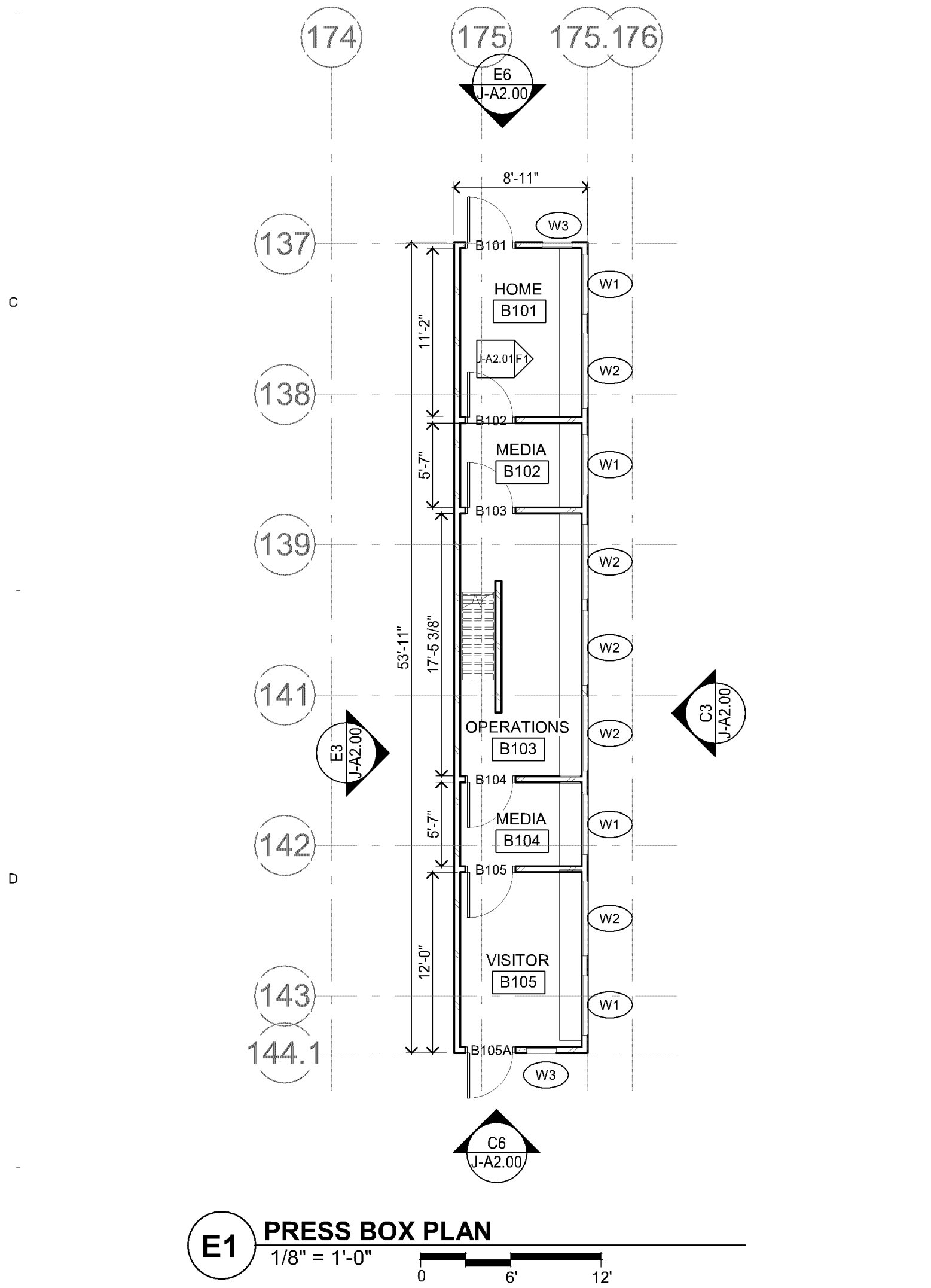
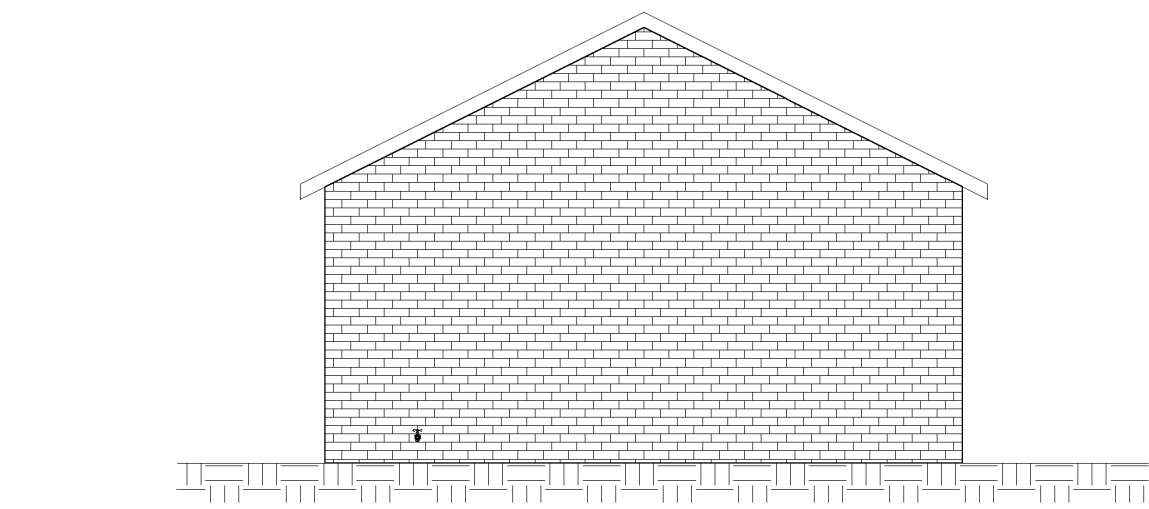
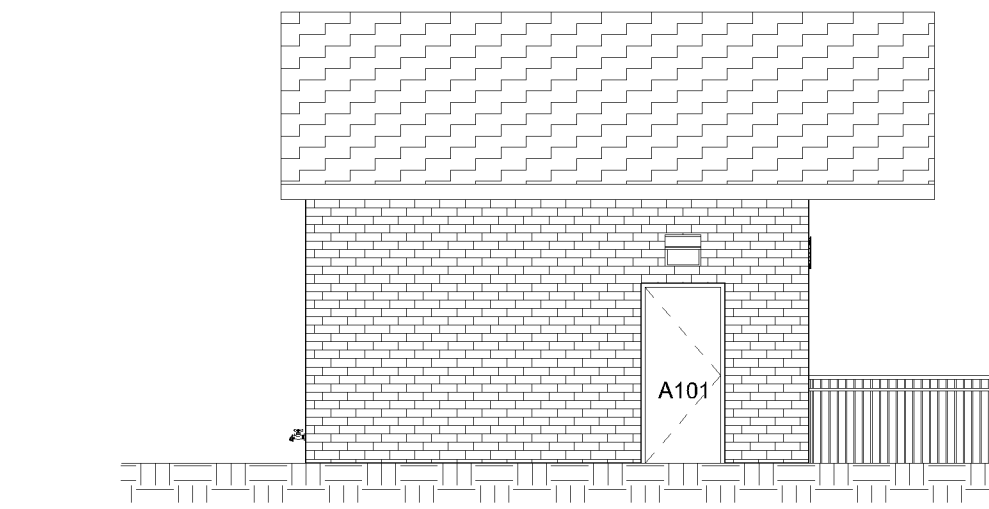
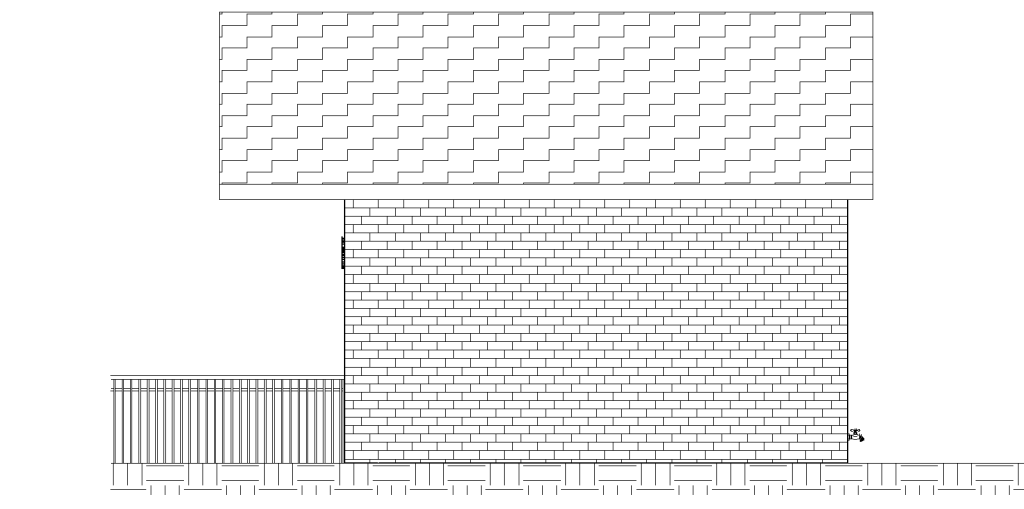
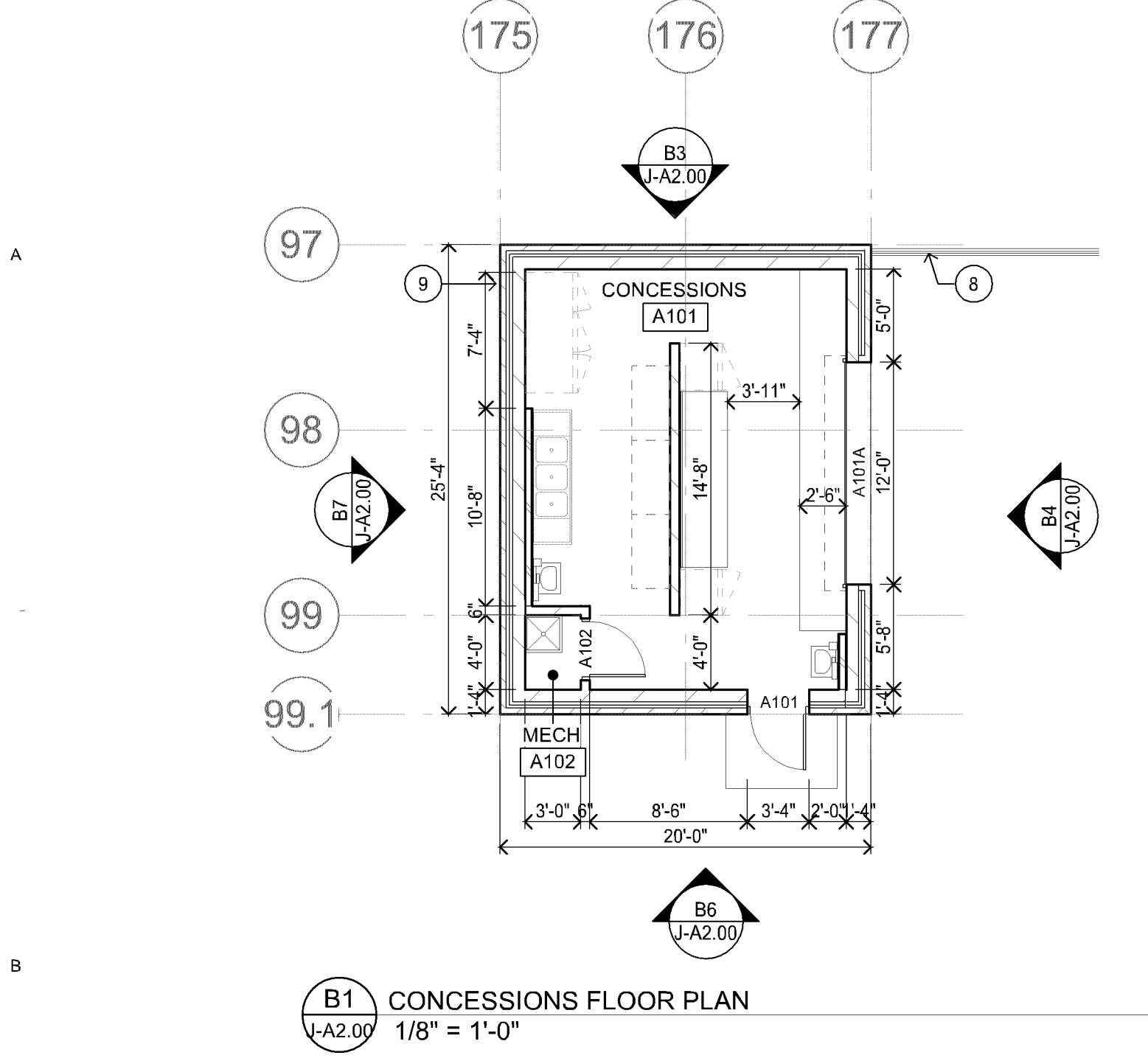
Description	Revisions	
	Date	Num

Comm: 222084
Date: Oct. 24, 2022
Drawn: Author
Check: Checker



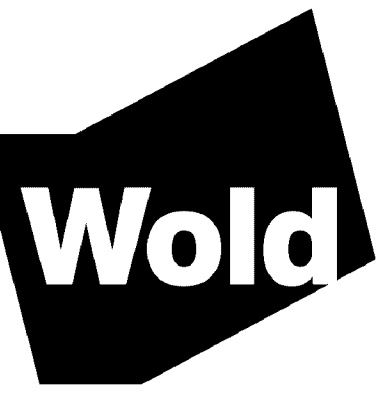
JEFFERSON SITE PLAN

Scale: 1" = 60'-0"



Jefferson and
Kennedy High
School Field
Improvements
4001 West 102nd Street
Bloomington, MN 55437

Independent School
District #271
4001 West 102nd Street
Bloomington, MN 55437



WOLD ARCHITECTS
AND ENGINEERS
332 Minnesota Street, Suite W3000
Saint Paul, MN 55101
woldae.com | 651.227.7773

I hereby certify that this plan, specification or report was prepared by
me or under my direct supervision and that I am a duly Licensed
ARCHITECT
under the laws of the State of MINNESOTA

License Paul Aplikowski
Number 427337 Date 10/24/2022

Revisions		
Description	Date	Num

Comm: 222084
Date: Oct. 24, 2022
Drawn: CT
Check: Checker
North

CONCESSIONS,
PRESS BOX, AND
ENTRY PLANS
AND ELEVATIONS

Scale: As indicated

J-A2.00

PLANNING COMMISSION SUBMITTAL
NOT FOR CONSTRUCTION