

GENERAL CONSTRUCTION NOTES

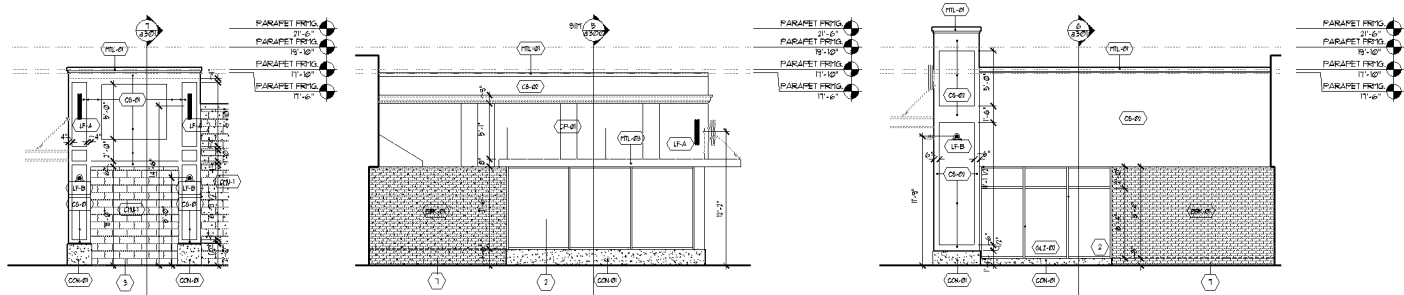
- A. REFER TO SHEET A500 FOR EXTENT OF PARAPET CONSTRUCTION.
- B. REFER TO SHEETS A500, A501 AND A502 FOR EXTENT OF FACIAD ELEVATIONS.
- C. REFER TO SHEETS A501 AND A502 FOR EXTENT OF PARAPET CONSTRUCTION.
- D. REFER TO SHEETS A501 AND A502 FOR FACIAD ELEVATIONS.
- E. CAST IN-PLACE CONCRETE SIDEWALKS AT THE EAST, SOUTH AND WEST TENANT SPACES.
- F. PROVIDE PROTECTION FOR FINISHES AND STRUCTURES TO REMAIN DURING DEMOLITION AND CONSTRUCTION.
- G. MATERIALS SPECIFIED ARE SUBJECT TO CHANGE. SUBSTITUTIONS SHALL MATCH OR EXCEED APPROVED MATERIALS AND COLORS SPECIFIED.

KEY CONSTRUCTION NOTES

- 1) DEMOLISH AND REMOVE EXISTING SIDEWALKS, EXCAVATE AND CAST NEW CONCRETE FOOTINGS AND BASES ON UNFINISHED SIDEWALK. INSTALL NEW METAL PIPE GUARDRAILS.
- 2) INSTALL NEW GLAZING IN NEW WALL OPENINGS.
- 3) WALL WINDOW ASSEMBLY TO REMAIN FIELD. VERIFY CONDITIONS AT WALL CORNERS, SILL JOINTS AND REMOVE NEW BRICK, REPAIR AND DAMAGED GLAZING FRAMES OR GLAZING INSULATION.
- 4) EXCAVATE AND REMOVE FOOTING AND FOUNDATION ASSOCIATED WITH EXISTING CORNER ENTRY.
- 5) EXISTING DOOR ASSEMBLY TO REMAIN.
- 6) TENANT SIGNS ARE SHOWN FOR REFERENCE AND ARE NOT INCLUDED IN THIS DESIGN PACKAGE. PROVIDE AT LEAST ONE (1) JUNCTION BOX FOR TENANT SIGNS.

MATERIALS AND ASSEMBLIES KEY

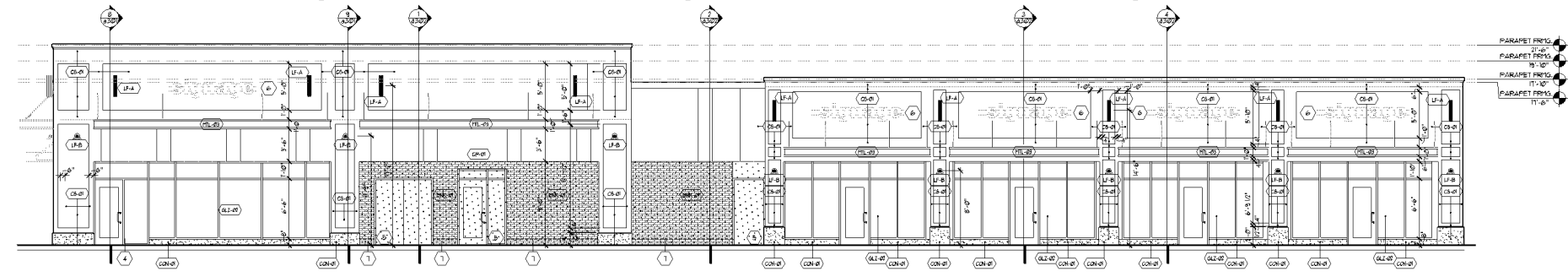
DRAWING SYMBOL KEY	DESCRIPTION	COMPOSITE PANELS	STANDARD BRICK NEW	EXTERIOR LED WALL FIXTURE
(ML-A)	PRE-FINISHED BREAK METAL COLOR: BLACK	(CP-A) 1/2" MINIMUM HOLLOW RIBBED INSULO BOARD	(BRK-N) PRE-FINISHED 1/2" MINIMUM BOND COLOR: FEDERAL WHITE SAND 2:1 MIX	(U-A) EXTERIOR LED WALL FIXTURE TYPE: 15000 LUMENS SURFACE MOUNT
(ML-B)	PRE-FABRICATED CANOPY TYPE: 2" FR. PROFILES INC. TYPE: 1" FACE THE BACK COLOR: BLACK	(CS-B) GEMENT BRUCCO FINISH SAND COLOR: T.B.D.	(GLZ-E) EXISTING GLAZING ASSEMBLY TO REMAIN	(U-B) EXTERIOR WALL FIXTURE TYPE: 15000 LUMENS SURFACE MOUNT
(ML-C)	PRE-FABRICATED CANOPY TYPE: 2" FR. PROFILES INC. TYPE: 1" FACE THE BACK COLOR: CLEAR ANOD. ALUM.	(BRK-E) STANDARD BRICK EXISTING FINISH: DARKOON BATTERED GLAZING BOND COLOR: DARKOON	(GLZ-N) PRE-FINISHED EXTRUDED ALUMINUM FINISH: ANODIZED FINISH GLAZING SHALL BE INSTALLED TO FACE EXISTING STOREFRONT ASSEMBLY.	
(ML-D)	EXISTING CORNER, ALL EXISTING PAINTED CMU AT NORTH FACIAD TO BE PAINTED FF-1			
(ML-E)	EXTERIOR PAINT COLOR: SHERWIN WILLIAMS EXISTING CMU FRAMES - TED EXISTING CMU TED			



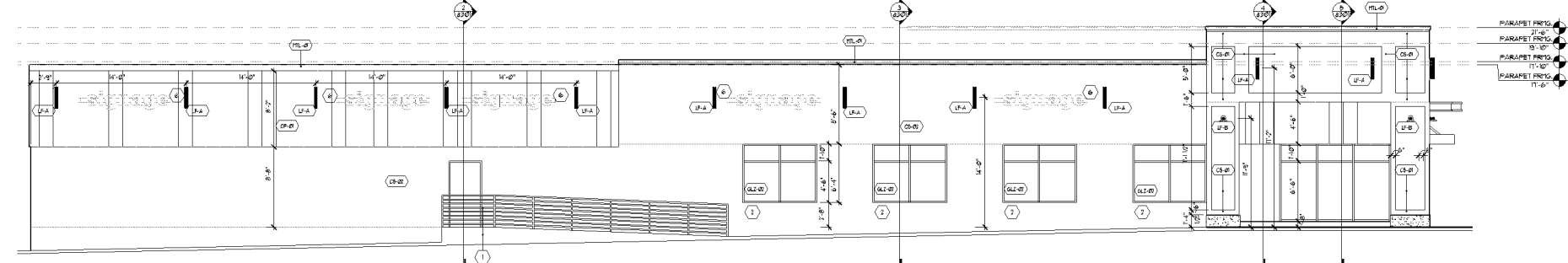
3 PARTIAL NORTH ELEVATION
3/16" = 1'-0"

4 PARTIAL WEST ELEVATION
3/16" = 1'-0"

3 PARTIAL EAST ELEVATION
3/16" = 1'-0"



2 EAST ELEVATION
3/16" = 1'-0"



1 WEST ELEVATION
3/16" = 1'-0"

tanek

118 E. 26th Street
Suite 300
Minneapolis, MN 55404
P:612-879-8225
F:612-879-8152
www.tanek.com

Clover Shopping Center
704-855 W 38th ST
Bloomington, MN 55420

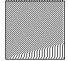

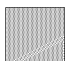



I hereby certify that this plan, specification or report was prepared by me or under my direct supervision and that I am a duly licensed architect under the laws of the state of Minnesota.

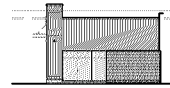
Kenneth E. Piper 06/11/2021
name date
21C12
license number signature

scale as noted
name KPJ/C

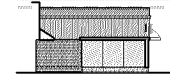
permit set 08.10.2024
50% progress set 08.21.2024
20% progress set 02.02.2024
building elevations

a211
copyright Tanek 2021

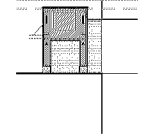
COLOR	MATERIAL	PERCENTAGE
	(CB-01) (CB-02) PRIMARY	29 % OF FACADE
	(ML-01) (ML-02) (ML-04) SECONDARY	6 % OF FACADE
	(CP-01) SECONDARY	7 % OF FACADE
	(AL-01) (AL-02) PRIMARY	17 % OF FACADE
	(CS-01) (CS-02) PRIMARY	38 % OF FACADE
	(PK-01) (PK-02) PRIMARY	3 % OF FACADE



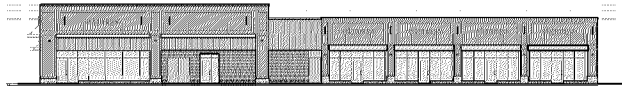
3 EAST INNER ELEV.
a220 1/8" = 1'-0"



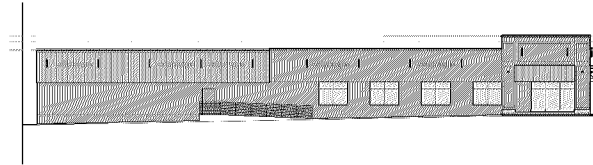
3 WEST INNER ELEVATION
a220 1/8" = 1'-0"



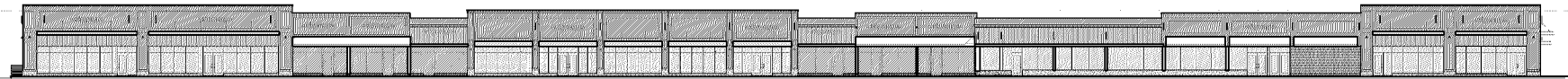
3 PARTIAL NORTH ELEV.
a220 1/8" = 1'-0"



3 EAST ELEVATION
a220 1/8" = 1'-0"



3 WEST ELEVATION
a220 1/8" = 1'-0"



1 SOUTH ELEVATION
a220 1/8" = 1'-0"

tanek

118 E. 26th Street
Suite 300
Minneapolis, MN 55404
P:612-879-8225
F:612-879-8152
www.tanek.com

Clover Shopping Center
704-855 W 38th ST
Bloomington, MN 55420

I hereby certify that this plan, specification or report was prepared by me or under my direct supervision and that I am a duly licensed architect in the State of the State of Minnesota.

Habibullah Ghos v.c. 04.2021
name date
21515
license number signature

scale 1/8" = 1'-0"
name NSJJC

permit set 09.10.2024
50% progress set 08.21.2024
20% progress set 02.02.2024
building elevation percentages

a220
Copyright Tanek, 2021