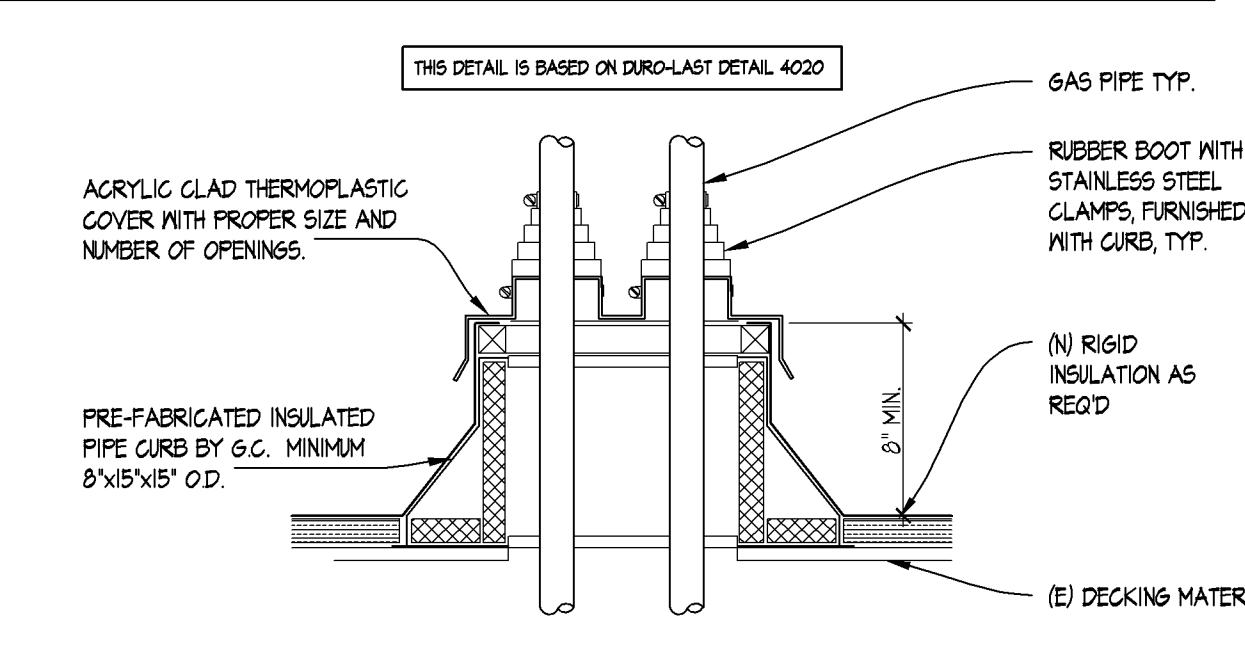
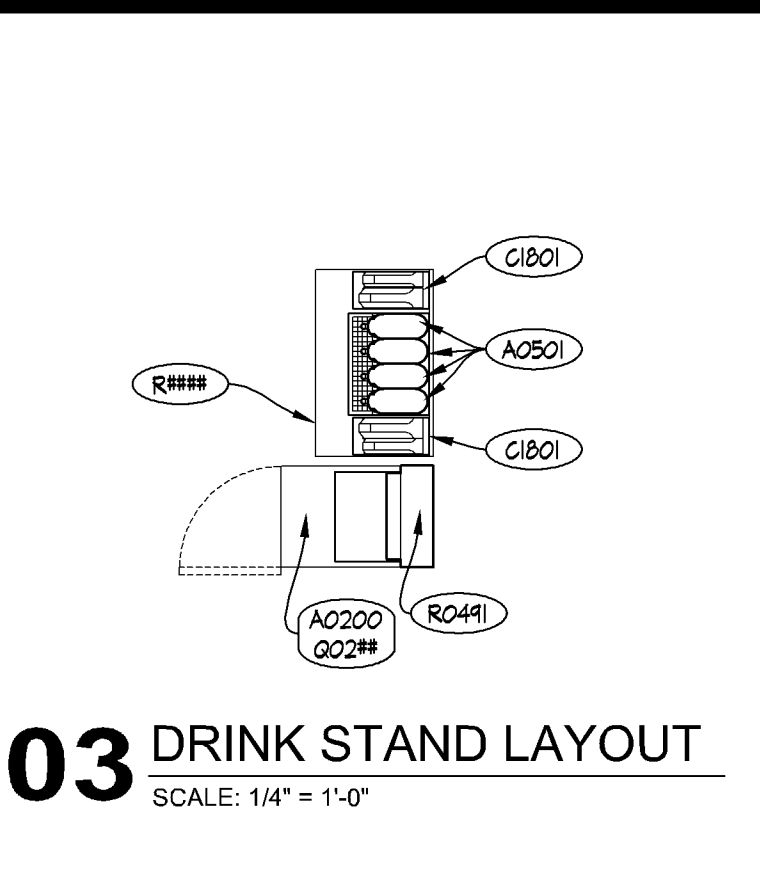


MARK	DESCRIPTION OF EQUIPMENT	REMARKS	FURNISHED BY	INSTALLED BY
A000	BEVERAGE SYSTEM DRIVE-THRU	BEVARIETY OR FREESTYLE	O	O
A0200	BEVERAGE SYSTEM SELF-SERVE DINING ROOM	FREESTYLE US SITES "SILVER", CANADA SITES "RED"	O	O
A0501	ICED TEA DISPENSER-NARROW OVAL		ES	ES
C0401	NAPKIN DISPENSER		ES	ES
C1502	KETCHUP PUMP		ES	ES
C1801	LID/STRAW DISPENSER		ES	ES
D0100	POS MONITOR	RUNNER SCREEN ON ARM	O	O
D0200	POS TERMINAL	EXISTING TO BE RELOCATED, OR INDY OPTIONAL	O	O
E1408	FRONT COUNTER (COUNTER TOP ONLY)		ES	ES
NG0201	CASH DROP BOX	EXISTING TO BE RELOCATED, OR INDY OPTIONAL	ES	ES
NG0203	DESSERT CASE	VERIFY WITH WENDY'S REPRESENTATIVE	ES	ES
Q01#	REMOTE CONDENSING UNIT - DINING ROOM (ROOF)	* KITCHEN EQUIPMENT SUPPLIER TO VERIFY ACTUAL EQUIPMENT / MODEL / FINISH TO BE USED	ES	ES
Q01#	REMOTE CONDENSING UNIT - DRIVE THRU (ROOF)	* KITCHEN EQUIPMENT SUPPLIER TO VERIFY THAT EXISTING CAN BE REUSED OR IS TO BE REPLACED *QUANTITY WILL VARY DEPENDING ON EXACT BEVERAGE SYSTEM CONFIGURATION	ES	ES
Q02#	ICE MACHINE - DINING ROOM	*QUANTITY WILL VARY DEPENDING ON EXACT BEVERAGE SYSTEM CONFIGURATION	ES	ES
R0102	TRASH RECEPTACLE		ES	ES
R0302	CONDIMENT STAND (W/DRAIN)		ES	ES
R444	SMALL DRINK CONDIMENT STAND (W/DRAIN)		ES	ES
R0441	SELF-SERVE CHASE ASSEMBLY		ES	ES
R0505	CHAIR - STANDARD HEIGHT		ES	ES
R0506	CHAIR - CAFE HEIGHT		ES	ES
R050X	CHAIR - BAR HEIGHT		ES	ES
R1202	CANTILEVER BRACKET FOR TABLE		ES	ES
R15#	REFRESH BANQUETTE BOOTH		ES	ES
R1501	SINGLE BOOTH W/ FINISH BACK		ES	ES
R1603	HIGH CHAIRS		ES	ES
R1705	BOOSTER CHAIR		ES	ES
R1902	TABLE BASE (22'x22') - STANDARD HEIGHT		ES	ES
R1903	TABLE BASE (20'x20') - LOANSE TABLE		ES	ES
R1904	TABLE BASE (22'x22') - BAR HEIGHT		ES	ES
R1906	TABLE BASE (HANDICAP) - STANDARD HEIGHT	2 BASES PER TABLE	ES	ES
R1907	TABLE BASE (42') - STANDARD HEIGHT		ES	ES
R2008	TABLE TOP 22'x42' (W/ 4 EASED CORNERS)		ES	ES
R2001	TABLE TOP 20'x44'		ES	ES

MARK	DESCRIPTION OF EQUIPMENT	REMARKS	FURNISHED BY	INSTALLED BY
R2011	TABLE TOP 20 1/2'x20 1/2'		ES	ES
R2014	TABLE TOP 24'x42'		ES	ES
R2045	8-TOP FAMILY TABLE AND BASE		ES	ES
R2046	FREESTANDING COMMUNITY W-TABLE (8 SEAT)		ES	ES
R2048	CANTILEVERED COMMUNITY W-TABLE (8 SEAT)		ES	ES
R205	TABLE TOP 24" ROUND CLIPPED		ES	ES
R206	TABLE TOP 42" ROUND		ES	ES
R26X1	1/4"-0" BANQUETTE		ES	ES
R28X1	ACCESSIBLE BAR SEATING (8 SEAT)		ES	ES
R30X1	CONDIMENT STAND - 54"		ES	ES
R32X1	MELCONE WALL		ES	ES
R32X2	8'-0" INTERIOR RED BLADE		ES	ES
R5001	REFRESH PINWHEEL BOOTH		ES	ES
U050#	BACKLIT STATIC MERCHANDISER (RED-HEAD ROASTERS)	* OWNER TO VERIFY ACTUAL EQUIPMENT/MODEL TO BE USED	O	O
U050#	BACKLIT STATIC QUELINS BOARDS	* OWNER TO VERIFY ACTUAL EQUIPMENT/MODEL TO BE USED	O	O
U050#	BACKLIT STATIC MENU BOARDS	* OWNER TO VERIFY ACTUAL EQUIPMENT/MODEL TO BE USED	O	O



02 CONDENSER PIPE CURB DETAIL
SCALE: 1 1/2" = 1'-0"



03 DRINK STAND LAYOUT
SCALE: 1/4" = 1'-0"

SYMBOL	DESCRIPTION
XX-X	CEILING FINISHES, SEE FINISH SCHEDULE
XX-X	WALL FINISHES, SEE FINISH SCHEDULE
XX-X	BASE FINISHES, SEE FINISH SCHEDULE
XX-X	FLOOR FINISHES, SEE FINISH SCHEDULE
XXXX	FLOORING TRANSITION WHERE DIMENSION PROVIDED IS WITHIN 2' OF EXISTING, TRANSITION SHALL BE LOCATED AT EXISTING
XXXX	EQUIPMENT TAGS

ARTPACK & WAYFINDING LEGEND	
AP-1	ENTRY BRAND MOMENT
AP-2	QUALITY IS OUR RECIPE (NOT USED)
AP-3	DAVE THOMAS QUOTE
AP-4	MEDALLION WENDY'S SEAL
AP-5	QUALITY FOOD MADE FRESH IS OUR RECIPE
AP-13	DAVE THOMAS STORY
NF-1	W-FI SIGN
NF-2	NO SMOKING SIGN
WF-5	MEN'S ROOM DOOR SIGN
WF-6	WOMEN'S ROOM DOOR SIGN
WF-7	MEN'S ROOM SIGN ADA
WF-8	WOMEN'S ROOM SIGN ADA
WF-9	GREEN MUST WASH HANDS
WF-10	RESTROOM CLEANLINESS
WF-11	EMPLOYEES ONLY
WF-12	HEISMAN - DITFA
NF	NUTRITION POSTER

FLOOR & FINISH PLAN GENERAL NOTES

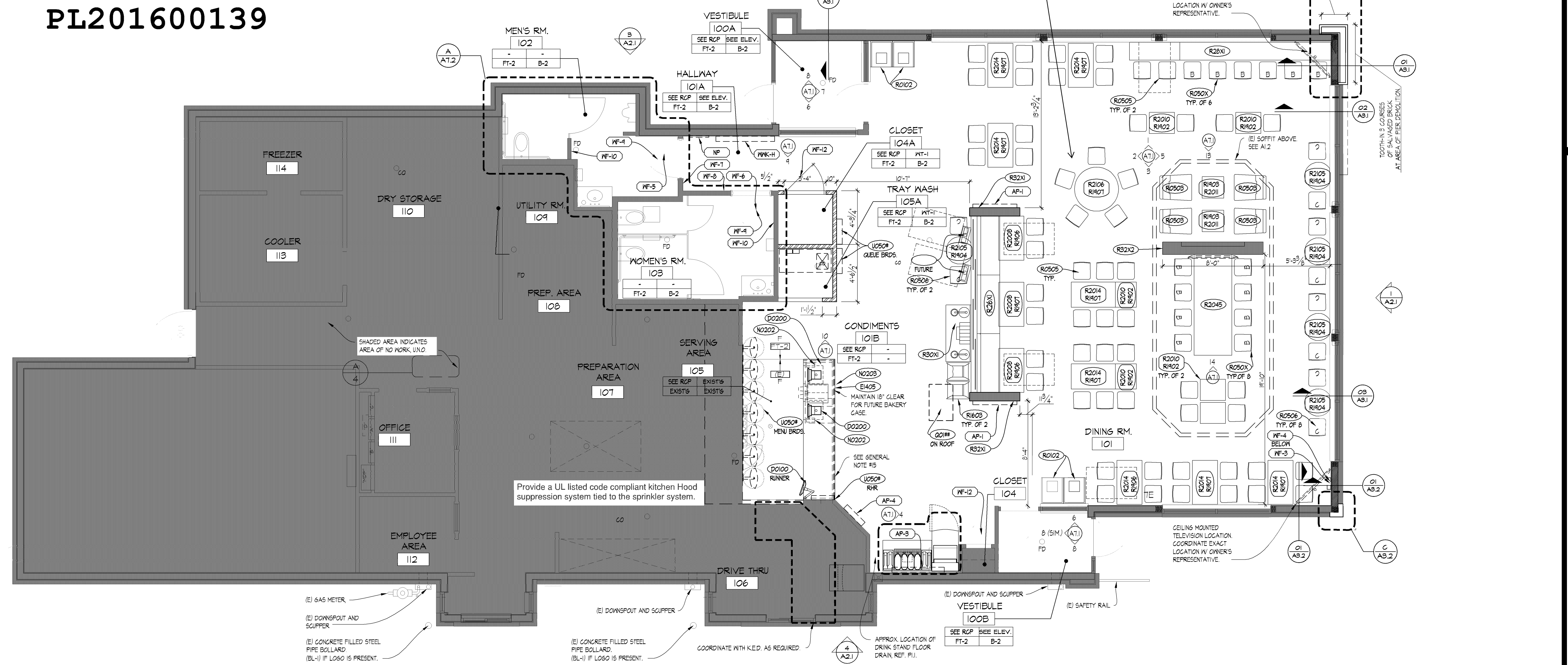
- G.C. SHALL BE RESPONSIBLE FOR VERIFYING "AS-BUILT" CONDITIONS AND LAYING OUT WORK BEFORE PROCEEDING WITH WORK.
- EXTERIOR FINISHES ARE NOTED ON EXTERIOR ELEVATIONS.
- SEE INTERIOR ELEVATIONS FOR EXTENT OF NEW INTERIOR WALL FINISHES.
- KITCHEN EQUIPMENT DISTRIBUTOR WILL SUPPLY CRITICAL DIMENSIONS, PLUMBING AND ELECTRICAL SPECIFICATIONS FOR EQUIPMENT SUPPLIED BY THE KITCHEN EQUIPMENT DISTRIBUTOR.
- ELECTRICAL AND PLUMBING CONTRACTOR TO MAKE FINAL CONNECTION TO EQUIPMENT.
- DESIGN INTENT IS FOR EXISTING FINISHES TO BE REPLACED WITH EQUIVALENT NEW FINISHES, UNO. COORDINATE WITH OWNER FOR OPTIONAL FINISH UPGRADES.
- G.C. TO PROVIDE AND INSTALL CRACK ISOLATION/WATERPROOF MEMBRANE AT ALL AREAS OF PORCELAIN, CERAMIC AND MARBLE TILES. HYDRO BAN BY LATACRETE. PROVIDE LATEX SEALANT @ ALL AREAS OF EXPANSION JOINTS IN SUBSTRATE PRIOR TO INSTALLATION OF HYDRO BAN. CONTACT LATACRETE AT (203) 376-8183.
- PAINTER SHALL BE RESPONSIBLE FOR THE REMOVAL OF HARDWARE, SWITCH AND OUTLET COVERS, ETC, AND REINSTALLATION OF SAME AFTER PAINTING.
- RETOUCH OR REFINISH SURFACES DAMAGED BY SUBSEQUENT WORK AS DIRECTED BY GENERAL CONTRACTOR. THE COST OF SUCH RESTORATION WORK SHALL BE BORNE BY THE CONTRACTOR.
- THE CONTRACTOR IS RESPONSIBLE FOR PROVIDING PROPER PROTECTION AGAINST DAMAGE TO EXISTING FURNITURE, ADJACENT FINISHED WORK, FLOORING, ETC, IF APPLICABLE.
- REFER TO REFLECTED CEILING PLAN FOR CEILING TYPES, HEIGHTS, & FINISHES.
- COORDINATE MUSIC & W-FI SYSTEM REQUIREMENTS WITH WENDY'S REPRESENTATIVE.
- FOR NEW DRINK STATIONS BEING ADDED, NEW CONDENSERS ON ROOF ARE REQUIRED. CONDENSERS TO BE INSTALLED ON EQUIPMENT RAILS SUPPLIED WITH UNITS. G.C. TO INSTALL EQUIPMENT RAILS AND CONDENSERS NO CLOSER THAN 10'-0" FROM ANY ROOF EDGE AND OUTSIDE AIR INTAKE. INSTALL RAILS PARALLEL WITH ROOF SLOPE TO ENSURE POSITIVE DRAINAGE. G.C. TO INSTALL NEW PIPE CURB FOR CONDENSER LINES PER DETAIL Q2/A1.1. COORDINATE FINAL LOCATION OF CONDENSERS AND PIPE CURB WITH WENDY'S CONSTRUCTION MANAGER AND A.H.L. PATCH AND REPAIR EXISTING ROOF MEMBRANE AS REQUIRED USING MEMBRANE MANUFACTURER'S STANDARD DETAILS TO ENSURE EXISTING WARRANTY IS MAINTAINED.
- VERIFY LOCATION(S) OF EXISTING FLOOR DRAIN TO SERVE DRINK STAND. PROVIDE NEW DRAIN TO SERVE DRINK STAND WHERE EXISTING IS NOT AVAILABLE. SAW CUT FLOOR SLAB AS REQUIRED FOR INSTALLATION OF NEW DRAIN AND PATCH TO MATCH ADJACENT AFTER INSTALLATION. COORDINATE EXACT LOCATION.
- SOLID SURFACE COUNTERTOP & RETROFIT FRONT COUNTER BASE CABINET AS REQUIRED FOR ORDER/PAY AND PICK-UP SEPARATION INCLUDING (N) UNDER-COUNTER ICE BIN. MAINTAIN (E) ICE BIN DRAIN FOR REUSE. RETROFIT KIT AVAILABLE THROUGH K.E.D. COORDINATE REQUIREMENTS WITH K.E.D. & G.C. AS REQUIRED. G.C. SHALL COORDINATE FINAL CASH DROP SAFE PLACEMENT WITH WENDY'S REPRESENTATIVE, INCLUDING ACCESS TO SAFE KEYS FROM RESTAURANT MANAGER.

CRITICAL NOTE:
THE GENERAL CONTRACTOR SHALL PROVIDE A CONTINGENCY BID FOR WORK IN THE BACK OF HOUSE/KITCHEN AREA BEYOND THE SCOPE OF THIS REFRESH SHOWN ON THESE DOCUMENTS. COORDINATE ANY/ALL WORK PROPOSED OR REQUIRED WITH THE WENDY'S CONSTRUCTION REPRESENTATIVE PRIOR TO PURCHASING OR BEGINNING ANY WORK BEYOND THE LIMITED SCOPE SHOWN ON THESE CONSTRUCTION DOCUMENTS.

SITE NUMBER: #####
BASE MODEL: CG3480
ASSET TYPE: FRANCHISE
CLASSIFICATION: REFRESH
OWNER: FOURCROWN, INC
BASE VERSION: 2016 JAN.
UPGRADE CLASSIFICATION:
PROJECT YEAR: 2016
FURNITURE PACKAGE: 2016
DESIGN BULLETINS: THRU DB 2015-02



PL201600139



Wendy's
9624 LYNDAL AVE S,
BLOOMINGTON, MN 55420

REV.	DATE	DESCRIPTION

DATE: 11/17/2015
PROJECT NUMBER: 16-048
DRAWN BY: JL
CHECKED BY: EM

DESIGN
GUIDELINE ONLY -
NOT FOR
CONSTRUCTION

SHEET NAME
**FLOOR, FINISH
& EQUIPMENT PLAN**

SHEET NUMBER
A1.1

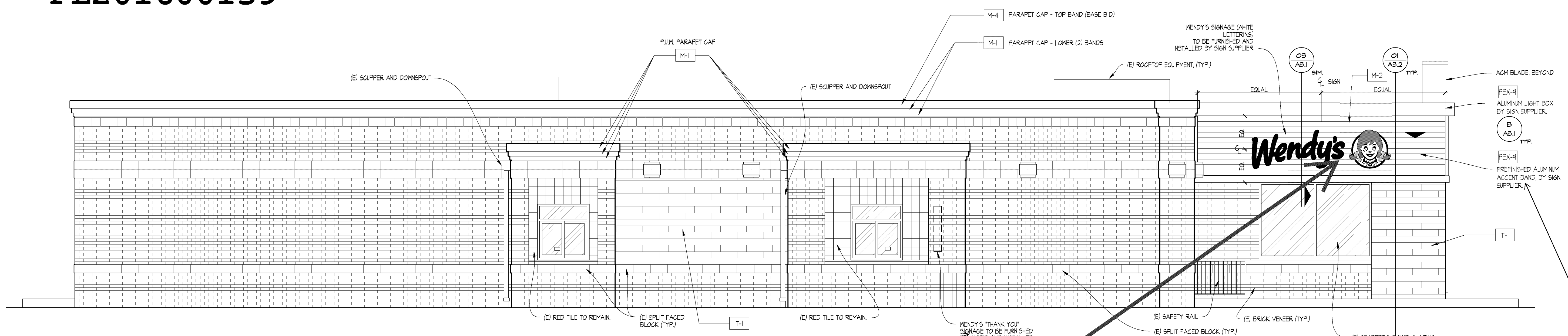
2016.01.14 09:44 AM: V:\Projects\16-048\16-048-001\16-048-001-Floor-Finish-Equipment-Plan.dwg (P) 1:16:08 PM 11/17/2015

PL201600139

SITE NUMBER:	#####
BASE MODEL:	CG3480
ASSET TYPE:	FRANCHISE
CLASSIFICATION:	REFRESH
OWNER:	FOURCROWN, INC
BASE VERSION:	2016 JAN.
UPGRADE CLASSIFICATION:	N/A
PROJECT YEAR:	2016
FURNITURE PACKAGE:	2016
DESIGN BULLETINS:	THRU DB 2015-02

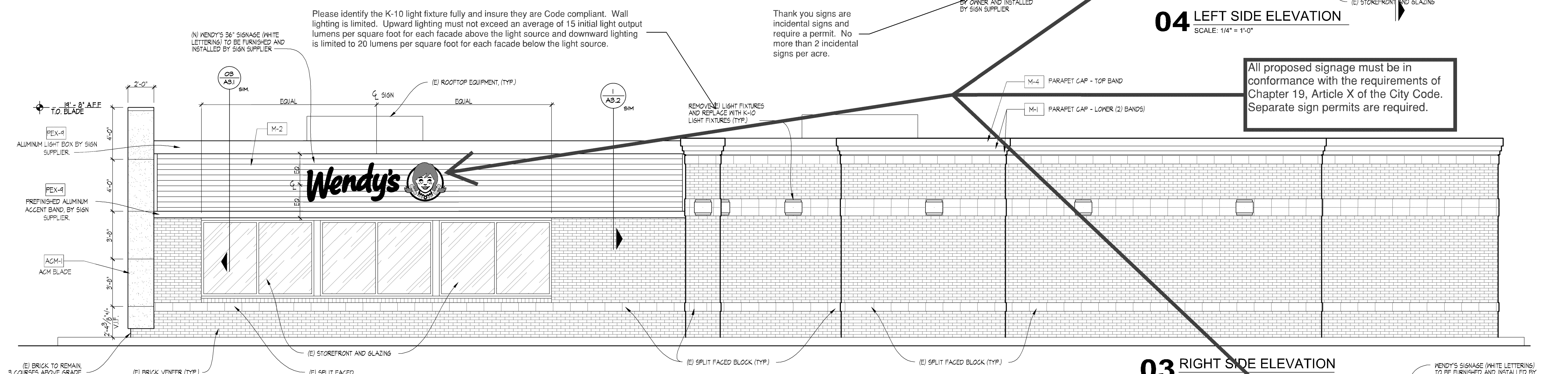


Exterior materials must meet Section 19.63.08 of the City Code. Additional details, including specification sheets, of all new materials must be provided. Primary metal materials must meet the City's metals policy for durability and longevity. A total of 15% of any facade may be alternative material.

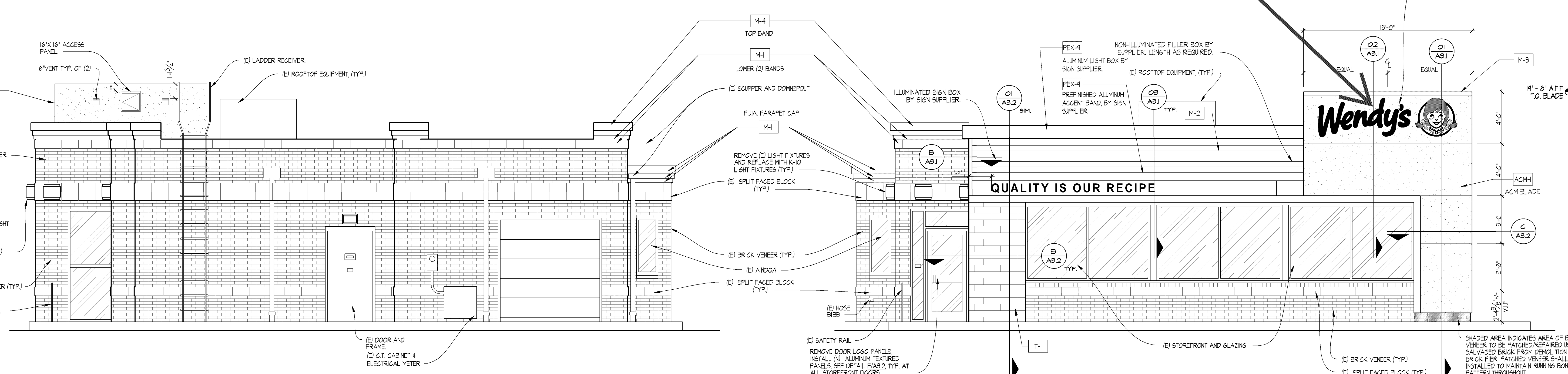


04 LEFT SIDE ELEVATION
SCALE: 1/4" = 1'-0"

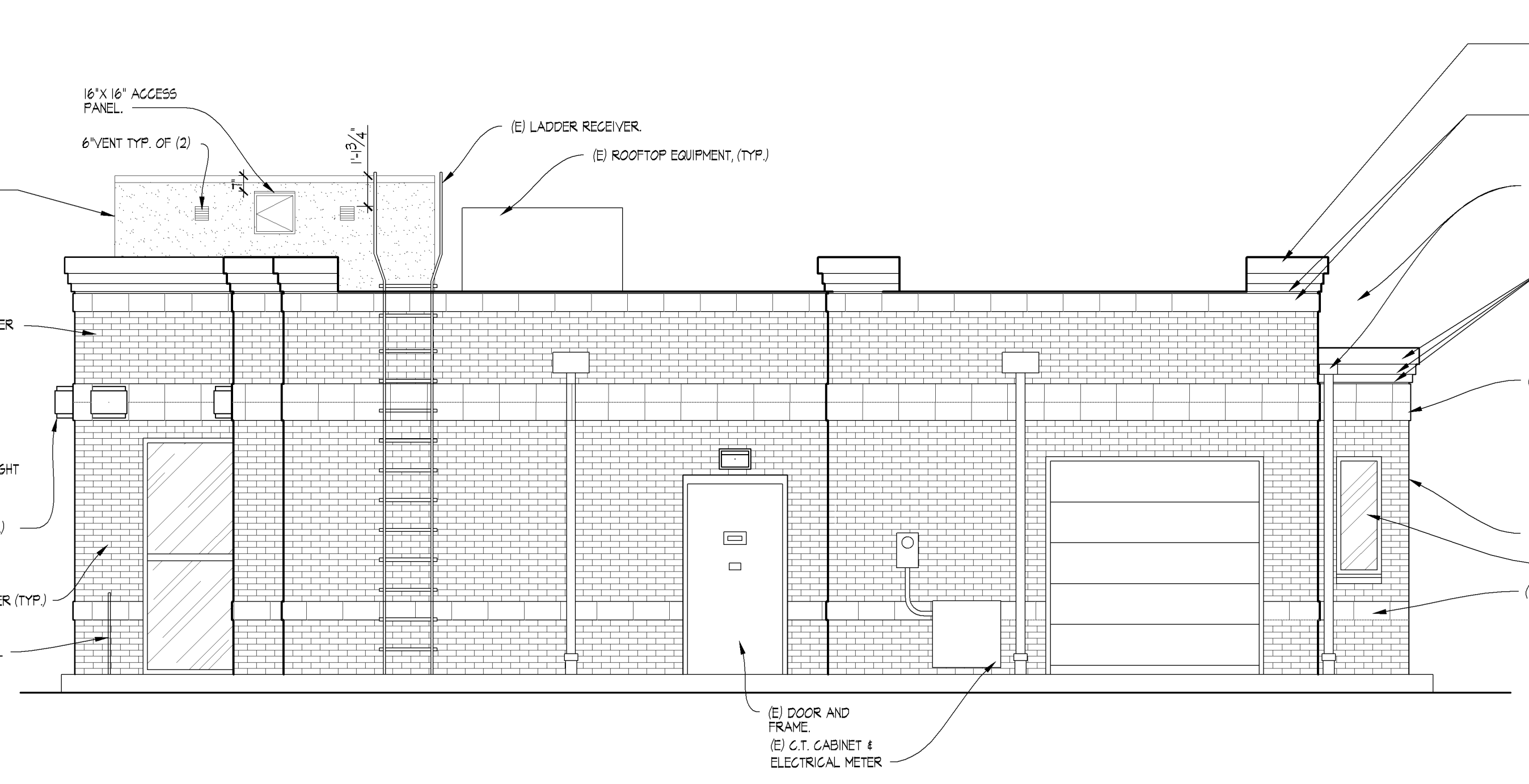
All proposed signage must be in conformance with the requirements of Chapter 19, Article X of the City Code. Separate sign permits are required.



03 RIGHT SIDE ELEVATION
SCALE: 1/4" = 1'-0"



01 FRONT ELEVATION
SCALE: 1/4" = 1'-0"



02 REAR ELEVATION
SCALE: 1/4" = 1'-0"

DATE PLOTTED: 03/01/2016 10:10:11 AM USER: bpa PROJECT: 16-048 FILE: \\B:\Projects\16-048\16-048.dwg PLOT: 16-048.dwg

Wendy's
9624 LYNDALE AVE S,
BLOOMINGTON, MN 55420

REV.	DATE	DESCRIPTION

ISSUE DATE: 11/17/2015
PROJECT NUMBER: 16-048
DRAWN BY: NL
CHECKED BY: EM

DESIGN GUIDELINE ONLY - NOT FOR CONSTRUCTION

EXTERIOR ELEVATIONS

A2.1