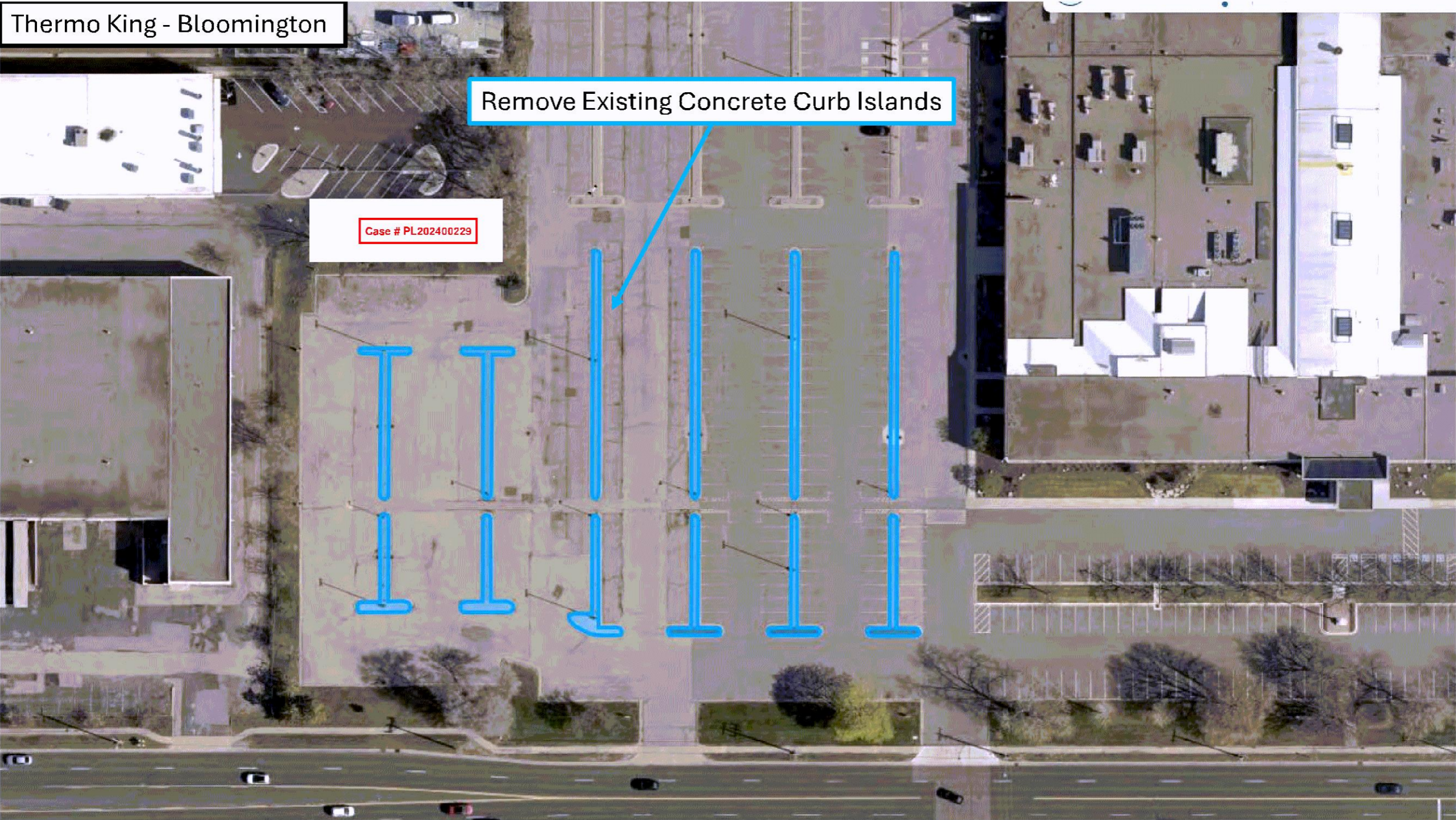


Thermo King - Bloomington

Remove Existing Concrete Curb Islands

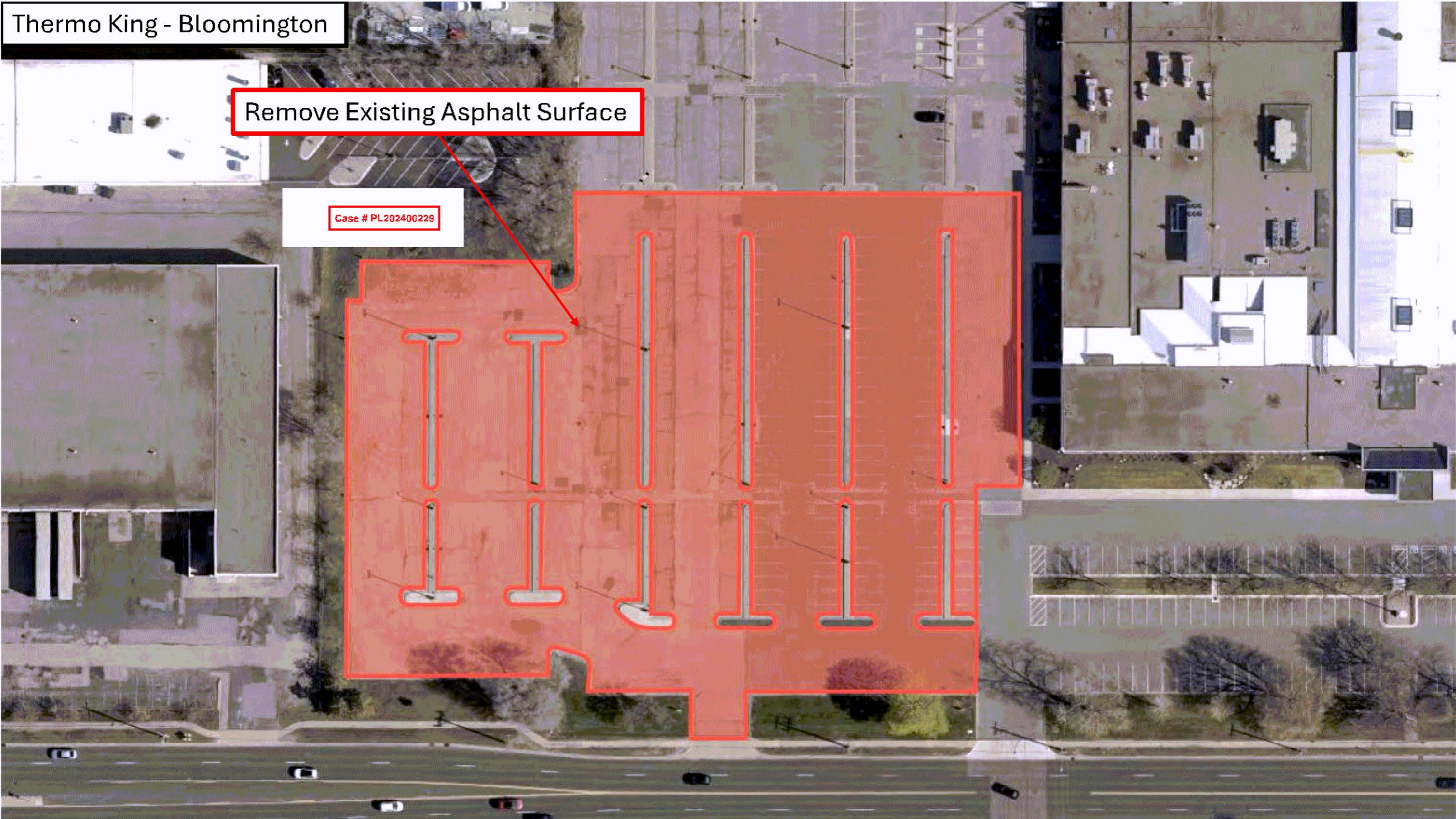
Case # PL202400229



Thermo King - Bloomington

Remove Existing Asphalt Surface

Case # PL202400229



Thermo King - Bloomington

Case # PL202400229

Eliminate Existing Asphalt Parking Lot / Replace as Green Space

Install new Asphalt Surface (2" Base Lift / 2" Wear Lift)

Install (8) 8' x 30' Concrete Curb Islands

Install New B612 Curb and Gutter

