

SKETCH & DESCRIPTION

FOR: CHASE DEVELOPMENT, INC

EASEMENT VACATION

All those drainage and utility easements, originally dedicated on the recorded plat of NORTHWESTERN FINANCIAL CENTER, Hennepin County, Minnesota, and now to be vacated, which lie within Lots 1 and 2, Block 2 said plat.

I hereby certify that this survey, plan or report was prepared by me or under my direct supervision and that I am a duly licensed Professional Land Surveyor under the laws of the State of Minnesota.

Signed this 17th day of March, 2026

For: Hill Incorporated

By: 

Marcus F. Hill, MN LS No. 47481

SHEET 1 OF 2

PROJECT NO.
24382-00

CAD FILE
24382VAC.dwg

REVISIONS

DATE
03/17/2026

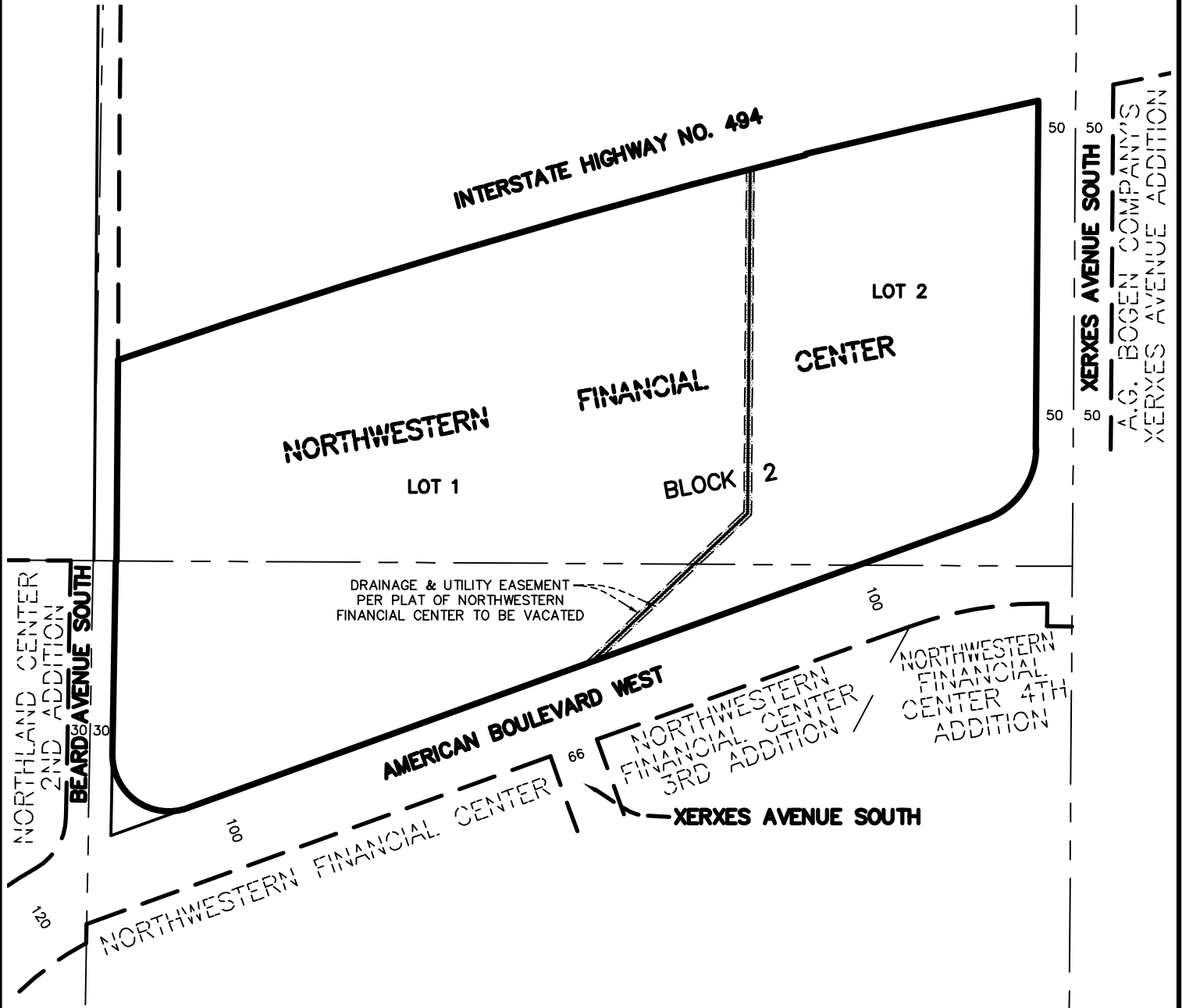
DRAWN BY
PLM



HILL
INCORPORATED

2999 WEST C.R. 42, SUITE 100
BURNSVILLE, MN 55306
PHONE: 952-890-6044
marcus@mnhill.com
www.mnhill.com

SKETCH & DESCRIPTION FOR: CHASE DEVELOPMENT, INC



SCALE: 1"=200'

EASEMENT VACATION